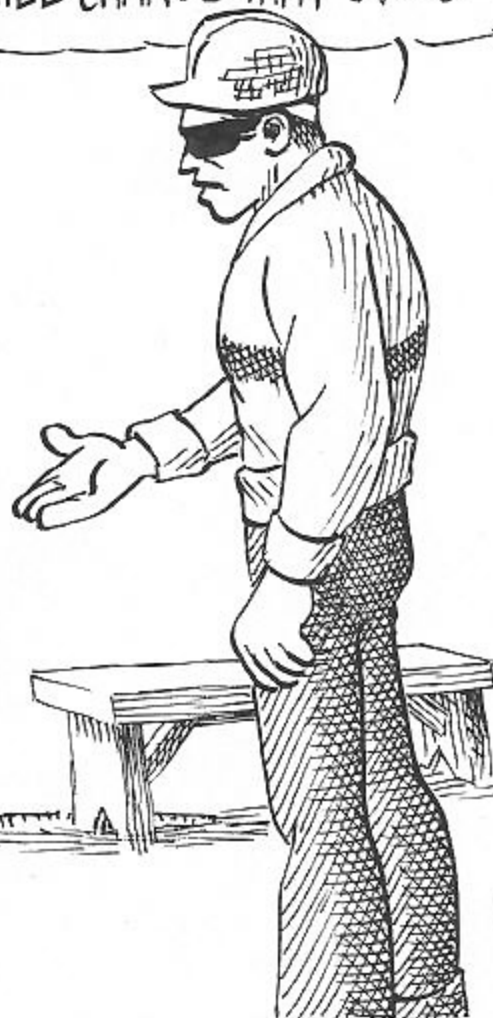


THE SWAB ON THE PIT SIDE OF THE PUMP IS LEAKING BACK

- BUT THE GEOLOGIST SAID HE WAS EXPECTING TO PENETRATE THE PAY ZONE ANY TIME NOW.

O.K. GET EVERYTHING READY AND WE'LL CHANGE SWABS-

HE COULD STILL BE EXPECTING IT TOMORROW! - START THE STANDBY PUMP-NO USE RUINING A LINER-WE WILL CHANGE THAT SWAB-NOW!



THANKS 'BOSS'-

FLOYD STUBBS  
4-97

GEOLOGISTS SHOULD HAVE NO AUTHORITY OVER REPAIRS NEEDED ON A RIG-