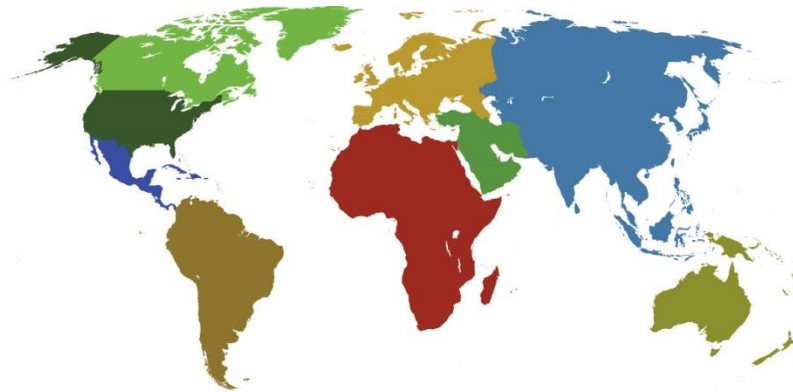




**IADC**

**IADC  
ISP PROGRAM**

**2018**



**Summary of Occupational  
Incidents  
(Middle East Land Totals)**

*Issued 15 June 2019*

# Table of Contents

(Table of Contents is Hyperlinked, Just click on Topic & go)

IADC 2018 MIDDLE EAST LAND TOTALS (TABLE 1) .....	1
<i>Middle East Land Total LTI &amp; Recordable Incidence Rates vs Man-hours (Figure 1)</i> .....	1
IADC 2018 MIDDLE EAST LAND CHARTS .....	2
<i>Middle East Land Total Lost Time Incidents by Month (Chart 1)</i> .....	2
<i>Middle East Land Total Recordable Incidents by Month (Chart 2)</i> .....	3
<i>Middle East Land Total Lost Time Incidents by Occupation (Chart 3)</i> .....	4
<i>Middle East Land Total Recordable Incidents by Occupation (Chart 4)</i> .....	5
<i>Middle East Land Total Lost Time Incidents by Body Part (Chart 5)</i> .....	6
<i>Middle East Land Total Recordable Incidents by Body Part (Chart 6)</i> .....	7
<i>Middle East Land Total Lost Time Incidents by Incident Type (Chart 7)</i> .....	8
<i>Middle East Land Total Recordable Incidents by Incident Type (Chart 8)</i> .....	9
<i>Middle East Land Total Lost Time Incidents by Equipment (Chart 9)</i> .....	10
<i>Middle East Land Total Recordable Incidents by Equipment (Chart 10)</i> .....	11
<i>Middle East Land Total Lost Time Incidents by Operation (Chart 11)</i> .....	12
<i>Middle East Land Total Recordable Incidents by Operation (Chart 12)</i> .....	13
<i>Middle East Land Total Lost Time Incidents by Location (Chart 13)</i> .....	14
<i>Middle East Land Total Recordable Incidents by Location (Chart 14)</i> .....	15
<i>Middle East Land Total Lost Time Incidents by Time in Service (Chart 15)</i> .....	16
<i>Middle East Land Total Recordable Incidents by Time in Service (Chart 16)</i> .....	17
<i>Middle East Land Total Lost Time Incidents by Time of Day (Chart 17)</i> .....	18
<i>Middle East Land Total Recordable Incidents by Time of Day (Chart 18)</i> .....	19
<i>Middle East Land Total Lost Time Incidents by Age (Chart 19)</i> .....	20
<i>Middle East Land Total Recordable Incidents by Age (Chart 20)</i> .....	21

# IADC 2018 Middle East Land Totals (Table 1)

	<u>Total</u>
Total Man-hours	93,371,234
Total Medical Treatment Incidents	42
Total Restricted Work Incidents	56
Total Lost Time Incidents	31
Total Fatalities	3
Total Recordables	132
MTO Incidence Rate	0.09
RWC Incidence Rate	0.12
LTI Incidence Rate	0.07
LTI Frequency Rate	0.36
DART Incidence Rate	0.19
DART Frequency Rate	0.96
Recordable Incidence Rate	0.28
Recordable Frequency Rate	1.41

Companies Reporting: Land – 19

Medical Treatment Incidence Rate = MTOs X 200,000

Restricted Work Incidence Rate = RWCs X 200,000

Lost Time Incidence Rate = LTIs + FTLs X 200,000

DART Incidence Rate = LTIs + RWC X 200,000

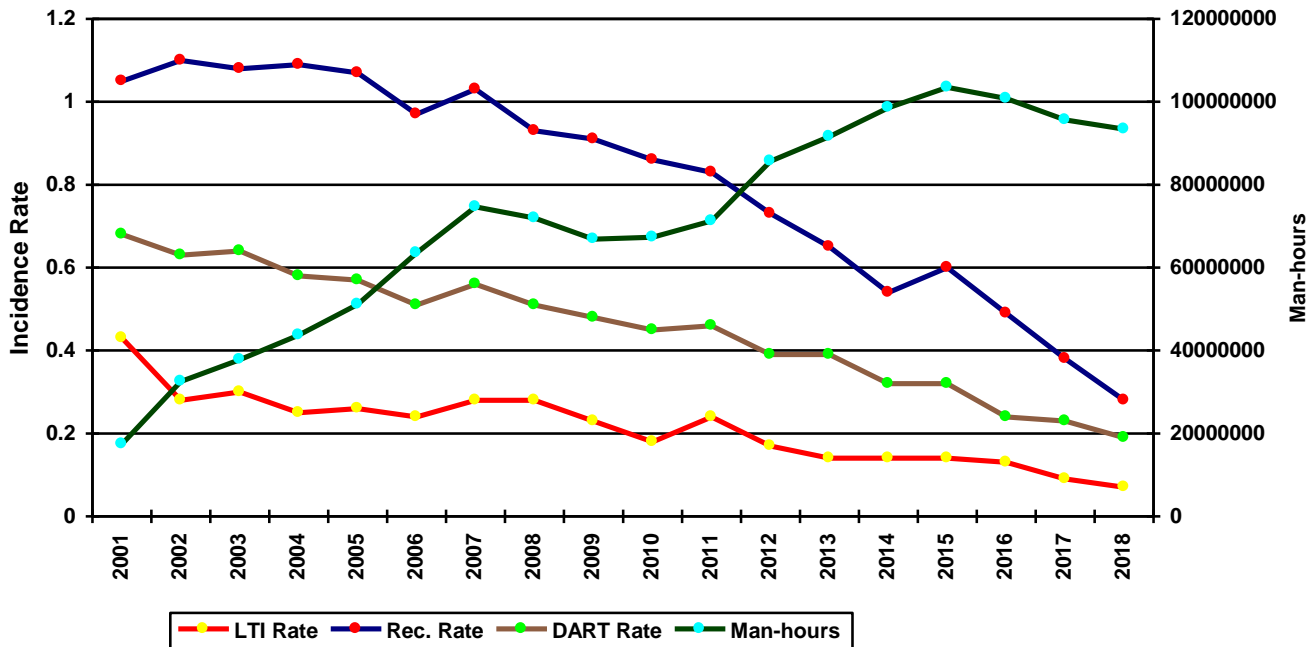
Recordable Incidence Rate = RCRD X 200,000

Lost Time Frequency Rate = LTIs +FTLs X 1,000,000

DART Frequency Rate = LTIs + RWC X 1,000,000

Recordable Frequency Rate = RCRD X 1,000,000

**Middle East Land Total LTI & Recordable Incidence Rates vs Man-hours (Figure 1)**

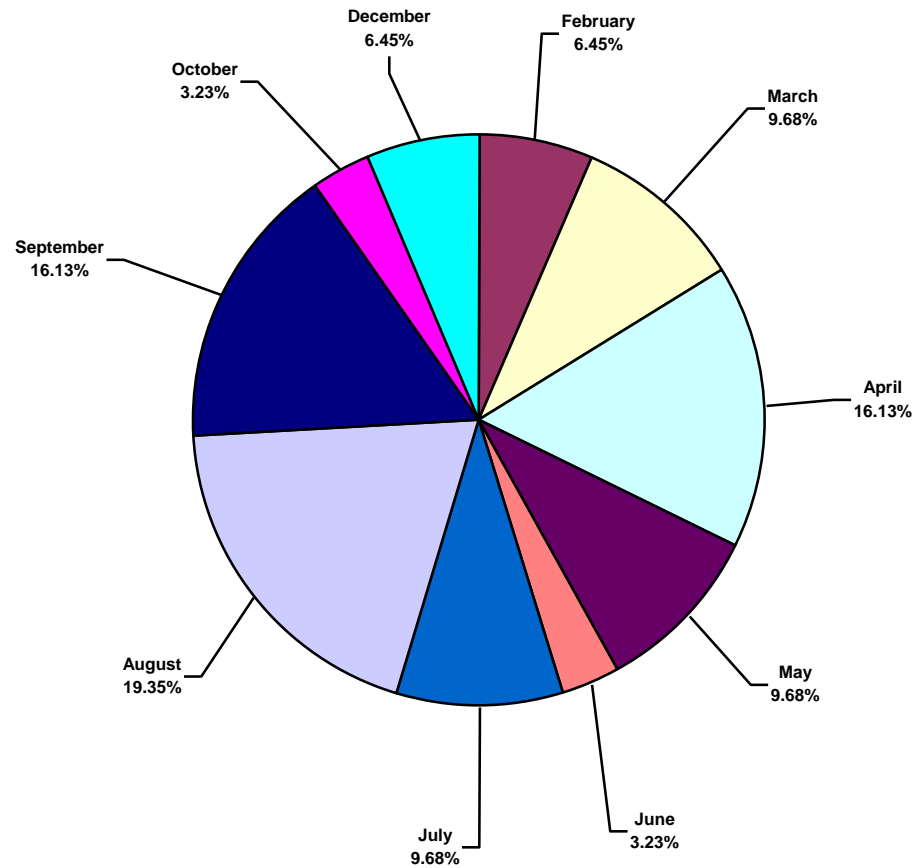




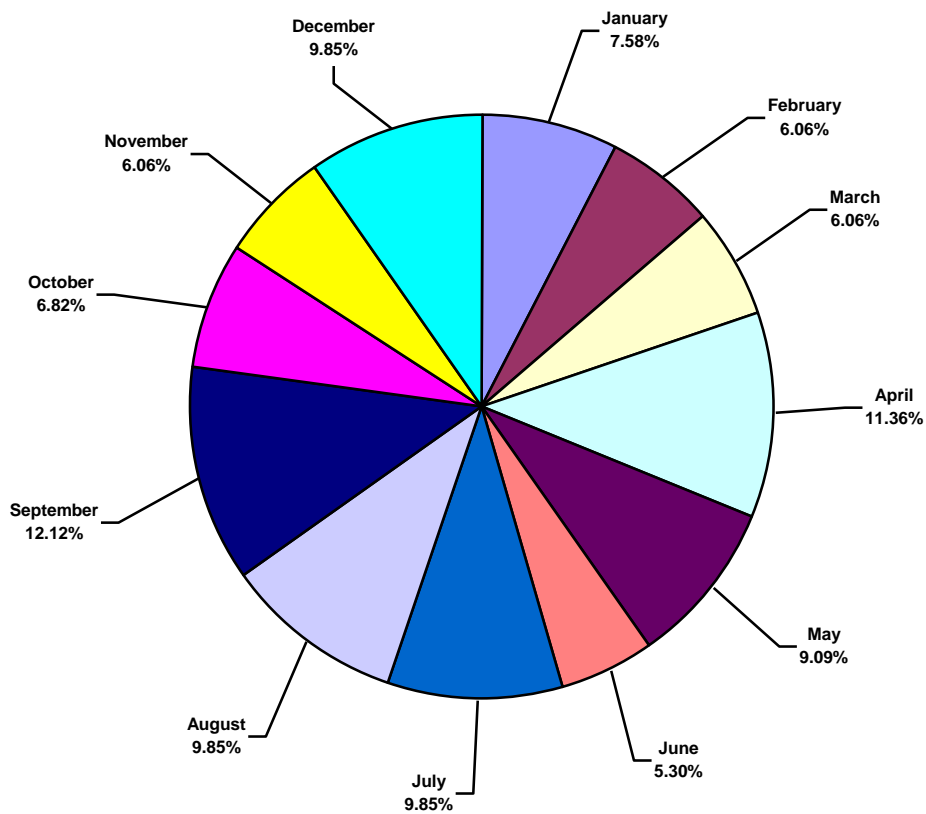
# IADC 2018 Middle East Land Charts

## Middle East Land Total Lost Time Incidents by Month (Chart 1)

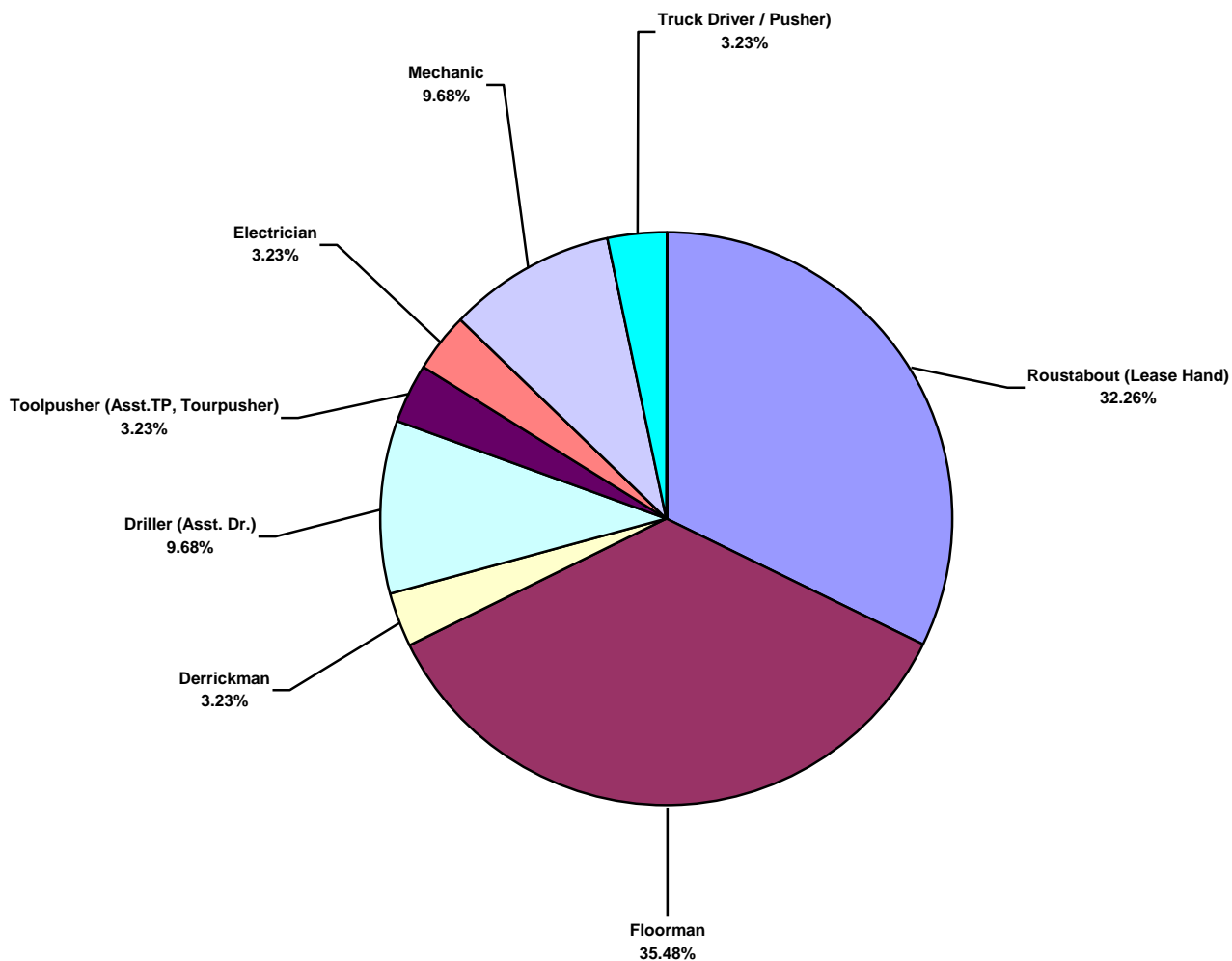
Based on 31 Incidents



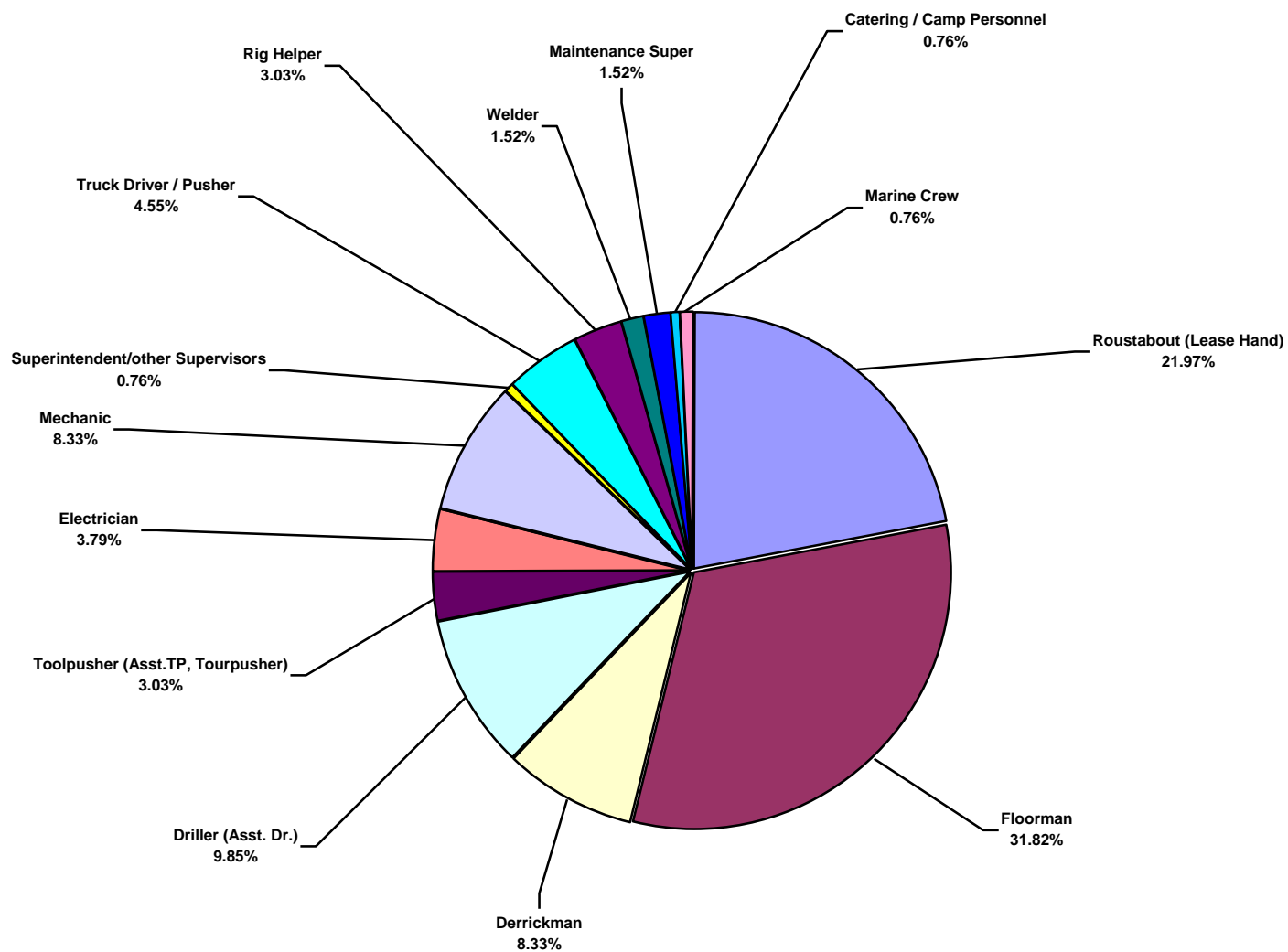
**Middle East Land Total Recordable Incidents by Month (Chart 2)**  
Based on 132 Incidents



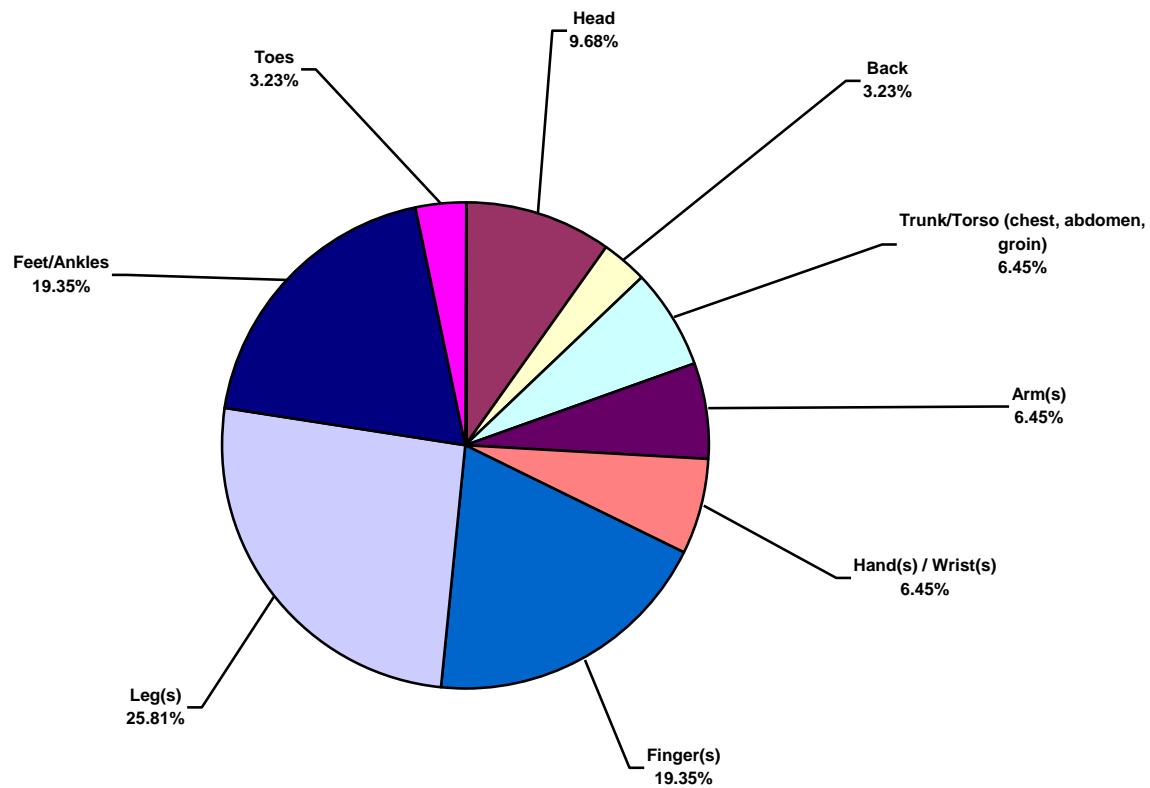
**Middle East Land Total Lost Time Incidents by Occupation (Chart 3)**  
Based on 31 Incidents



**Middle East Land Total Recordable Incidents by Occupation (Chart 4)**  
Based on 132 Incidents

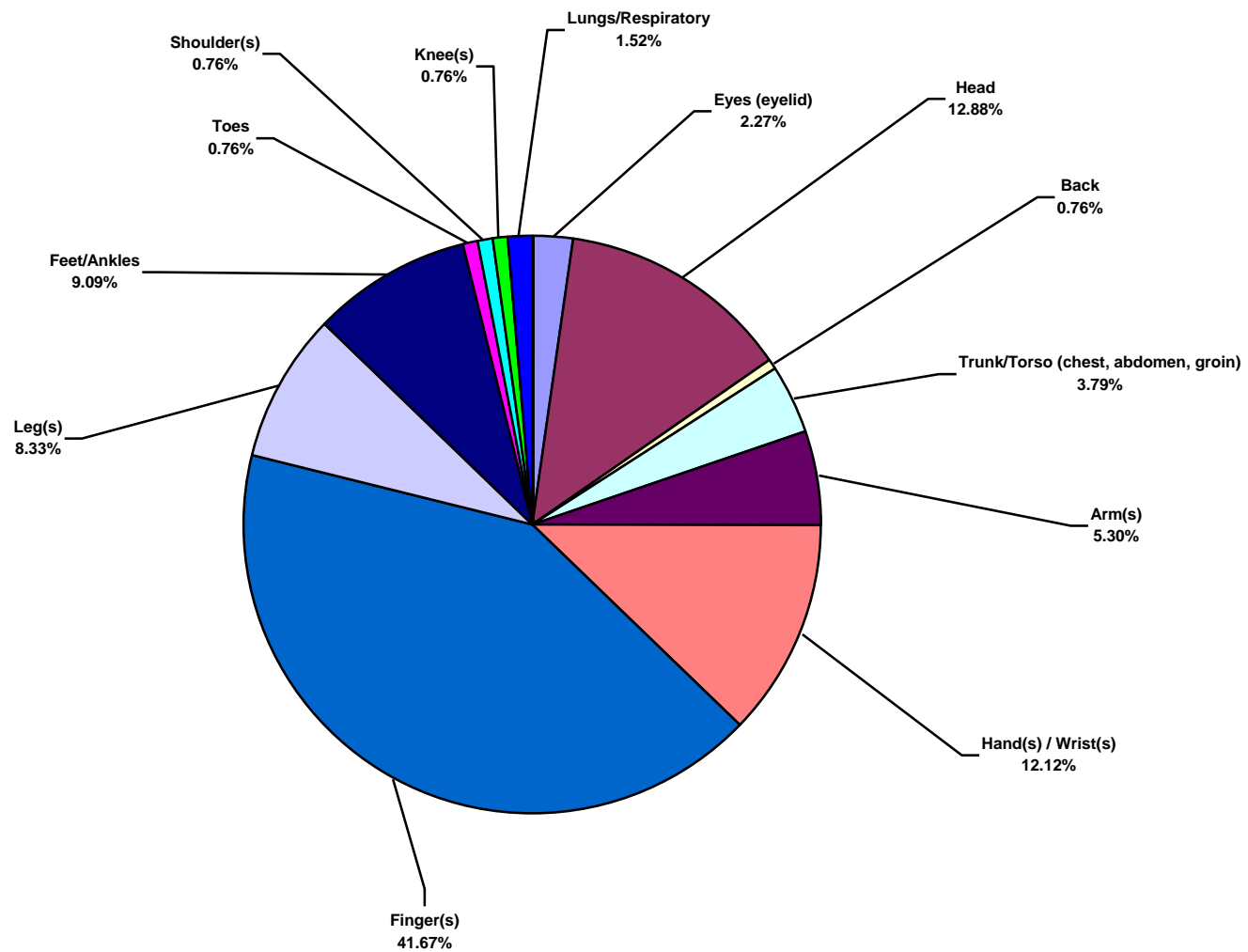


**Middle East Land Total Lost Time Incidents by Body Part (Chart 5)**  
Based on 31 Incidents

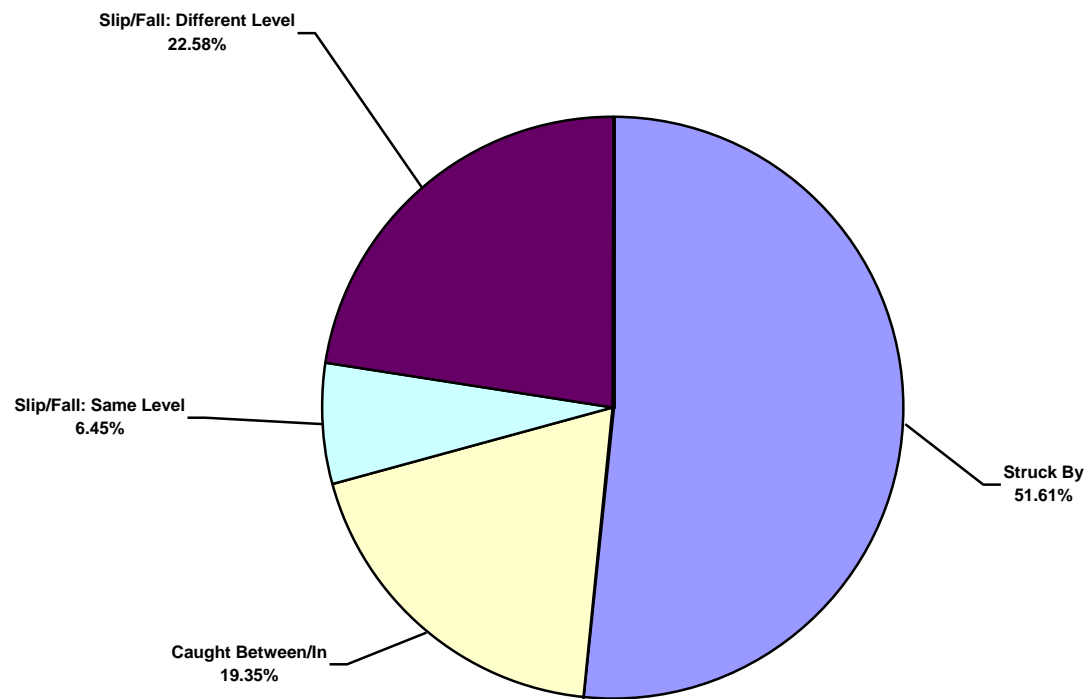




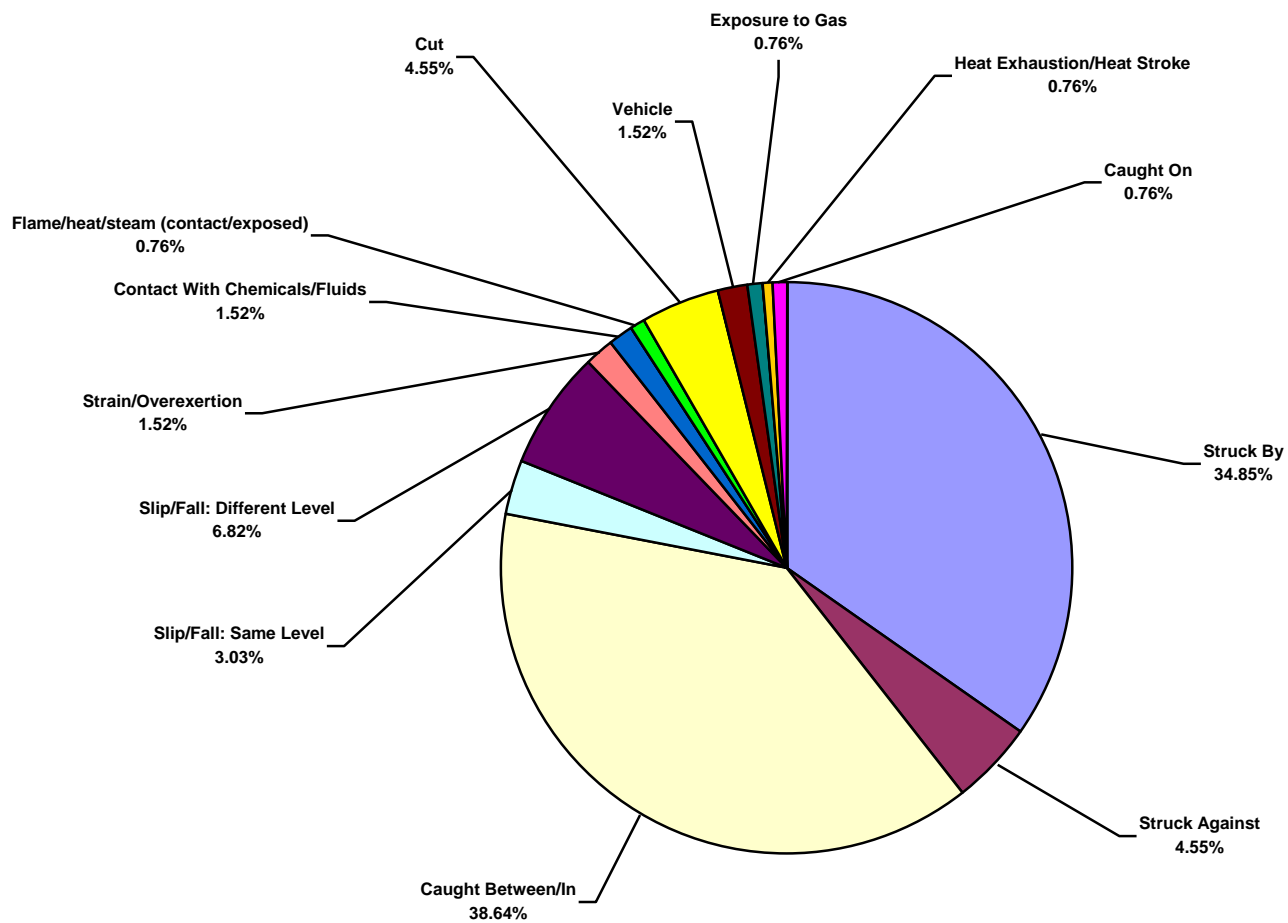
**Middle East Land Total Recordable Incidents by Body Part (Chart 6)**  
Based on 132 Incidents



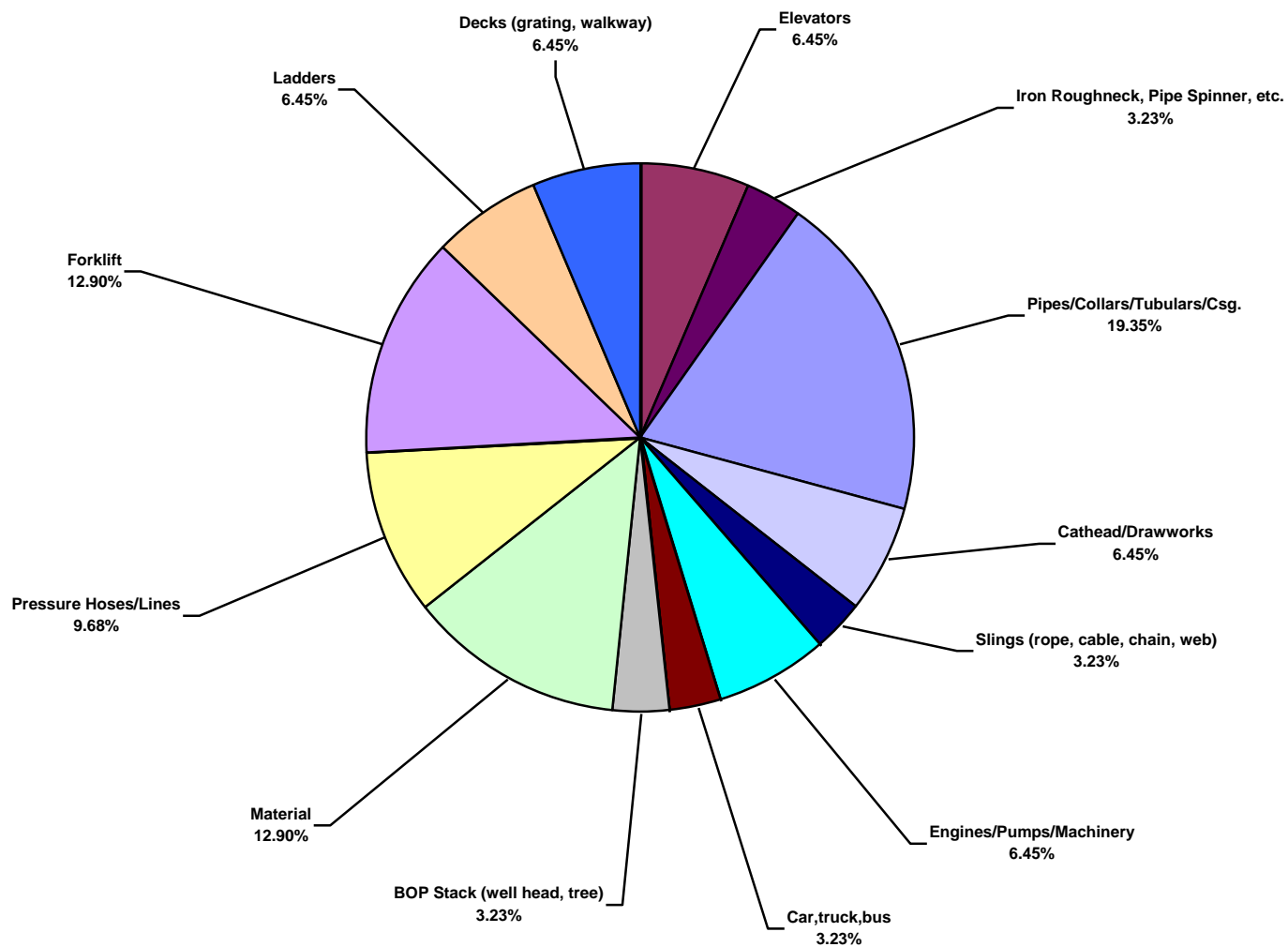
**Middle East Land Total Lost Time Incidents by Incident Type (Chart 7)**  
Based on 31 Incidents



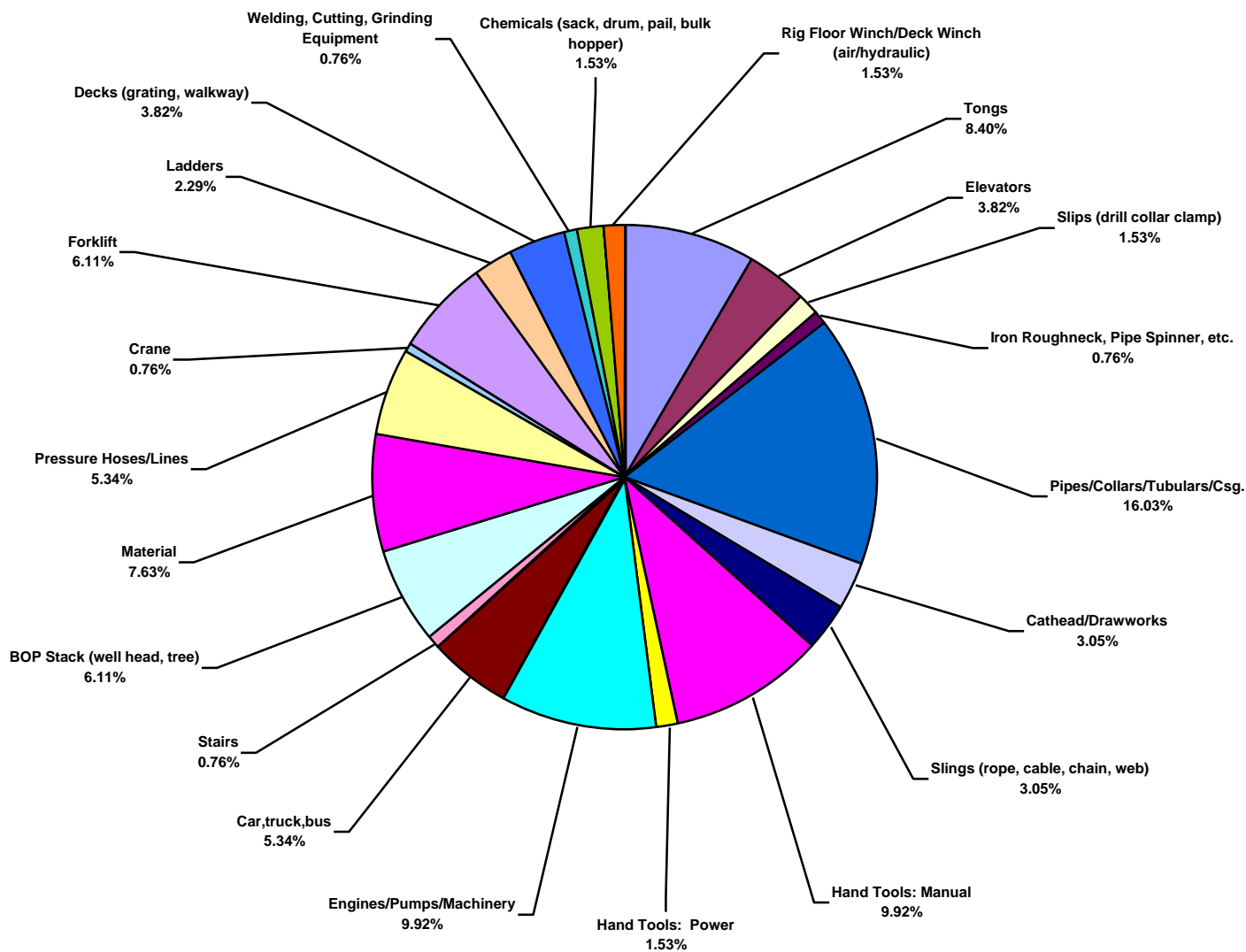
**Middle East Land Total Recordable Incidents by Incident Type (Chart 8)**  
Based on 132 Incidents



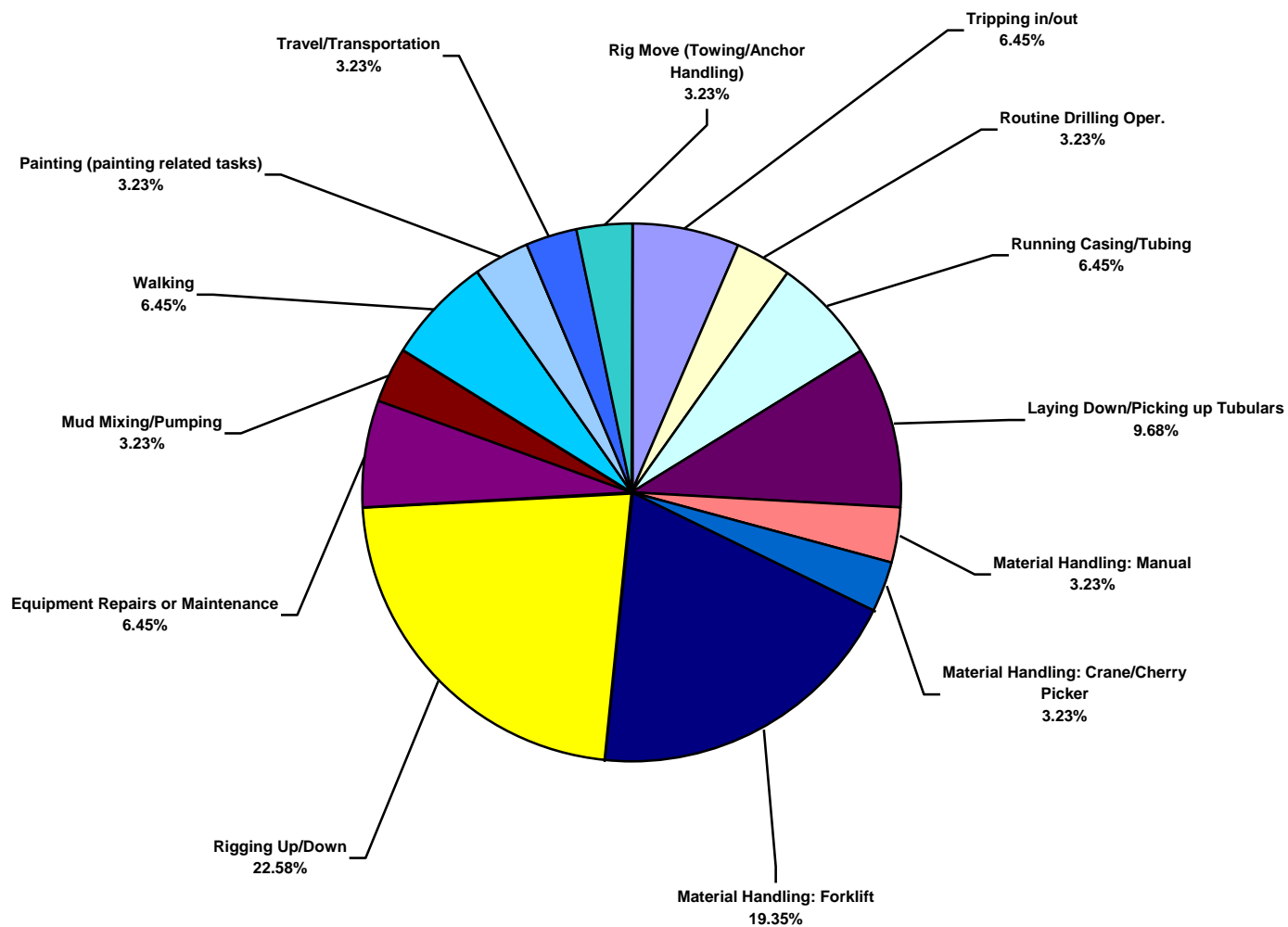
**Middle East Land Total Lost Time Incidents by Equipment (Chart 9)**  
Based on 31 Incidents



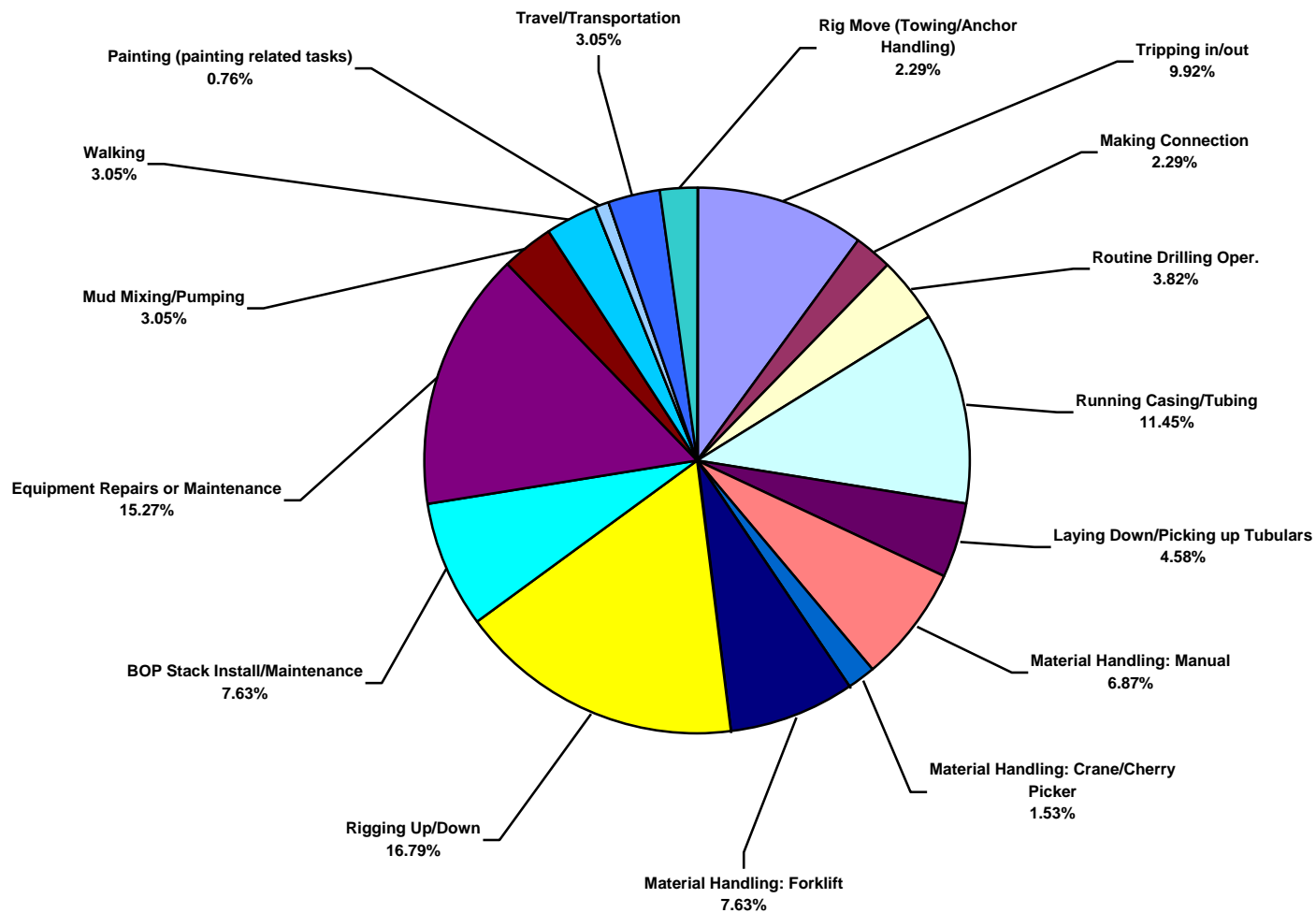
**Middle East Land Total Recordable Incidents by Equipment (Chart 10)**  
Based on 131 Incidents



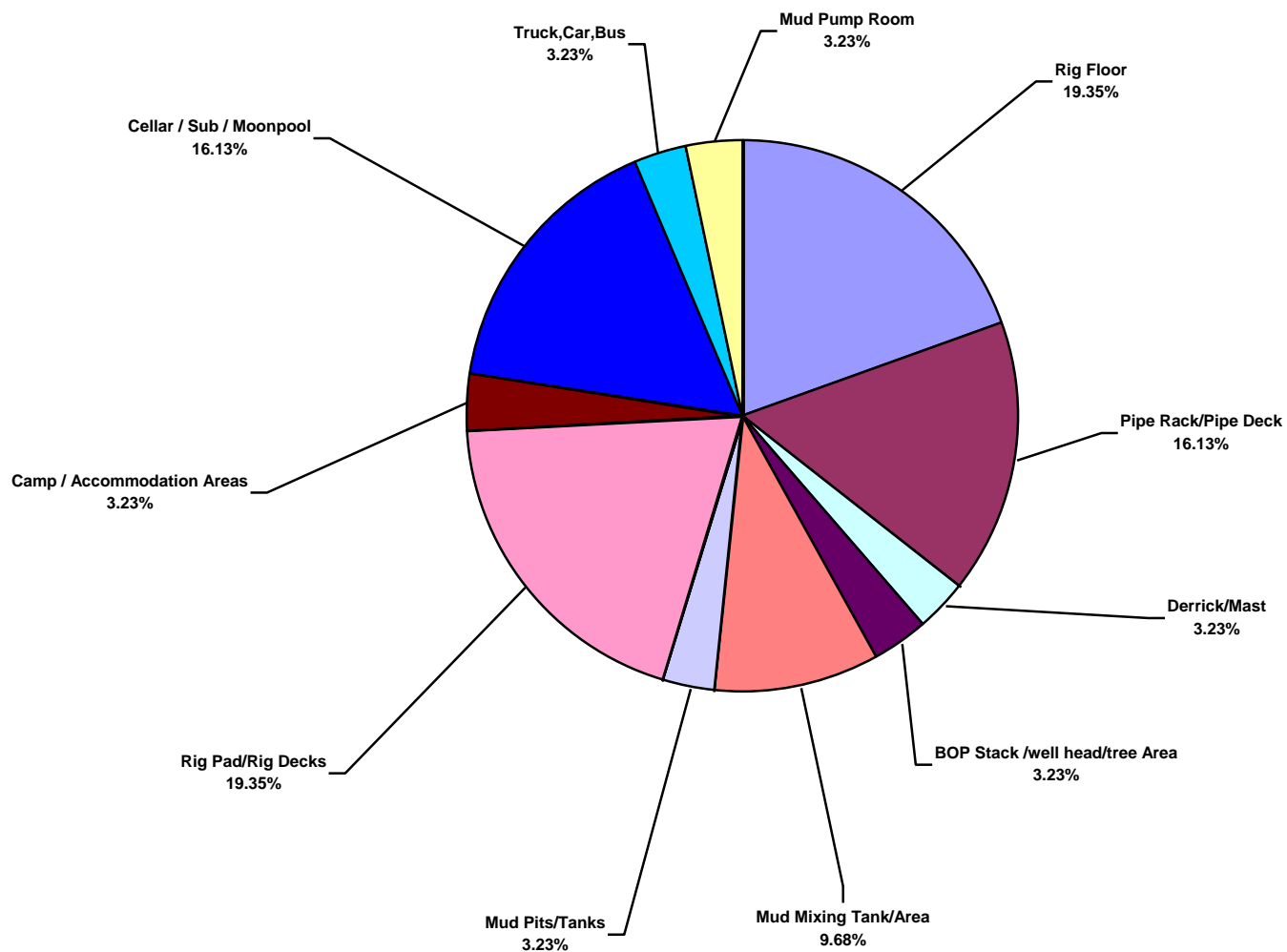
**Middle East Land Total Lost Time Incidents by Operation (Chart 11)**  
Based on 31 Incidents



**Middle East Land Total Recordable Incidents by Operation (Chart 12)**  
Based on 131 Incidents

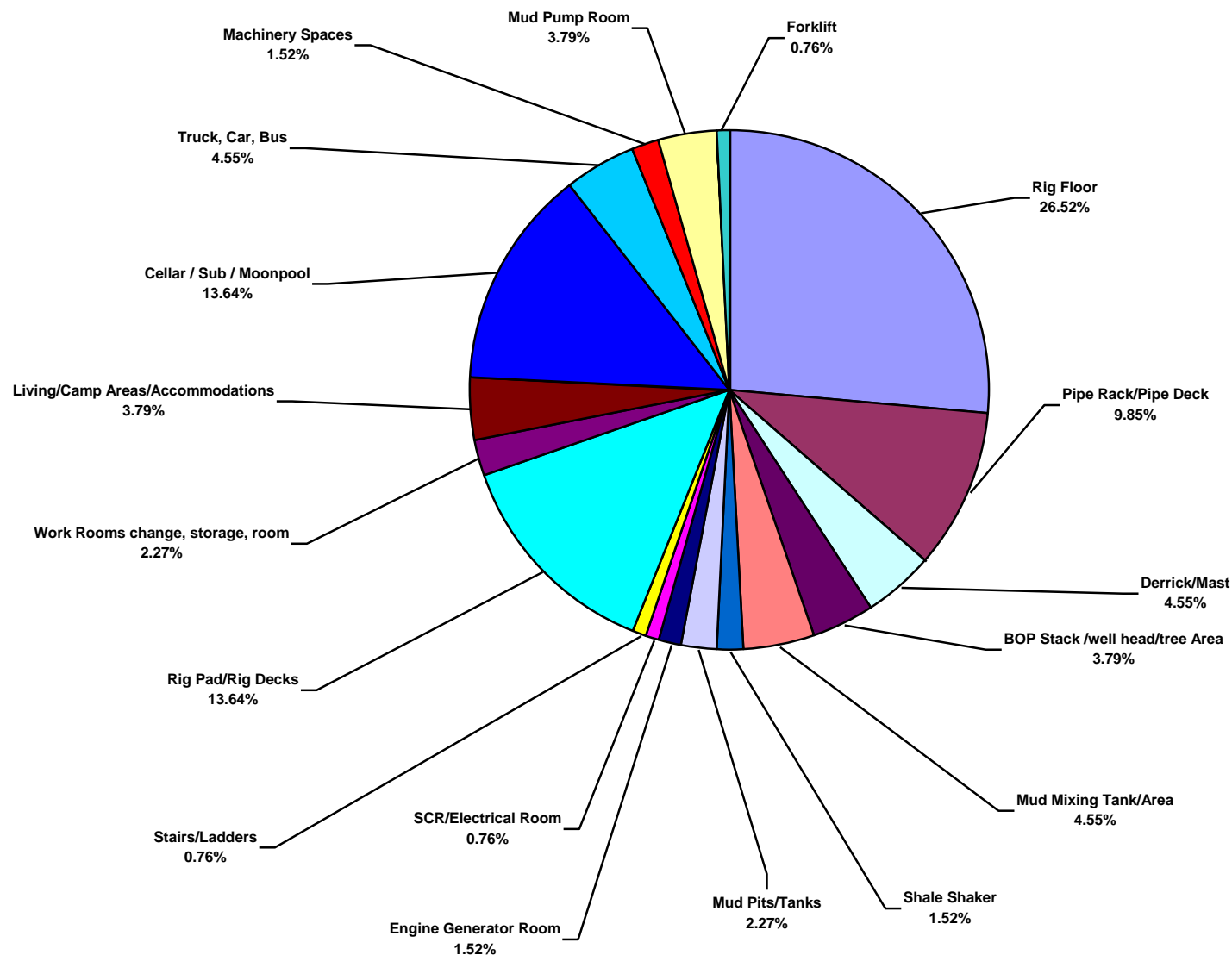


**Middle East Land Total Lost Time Incidents by Location (Chart 13)**  
Based on 31 Incidents

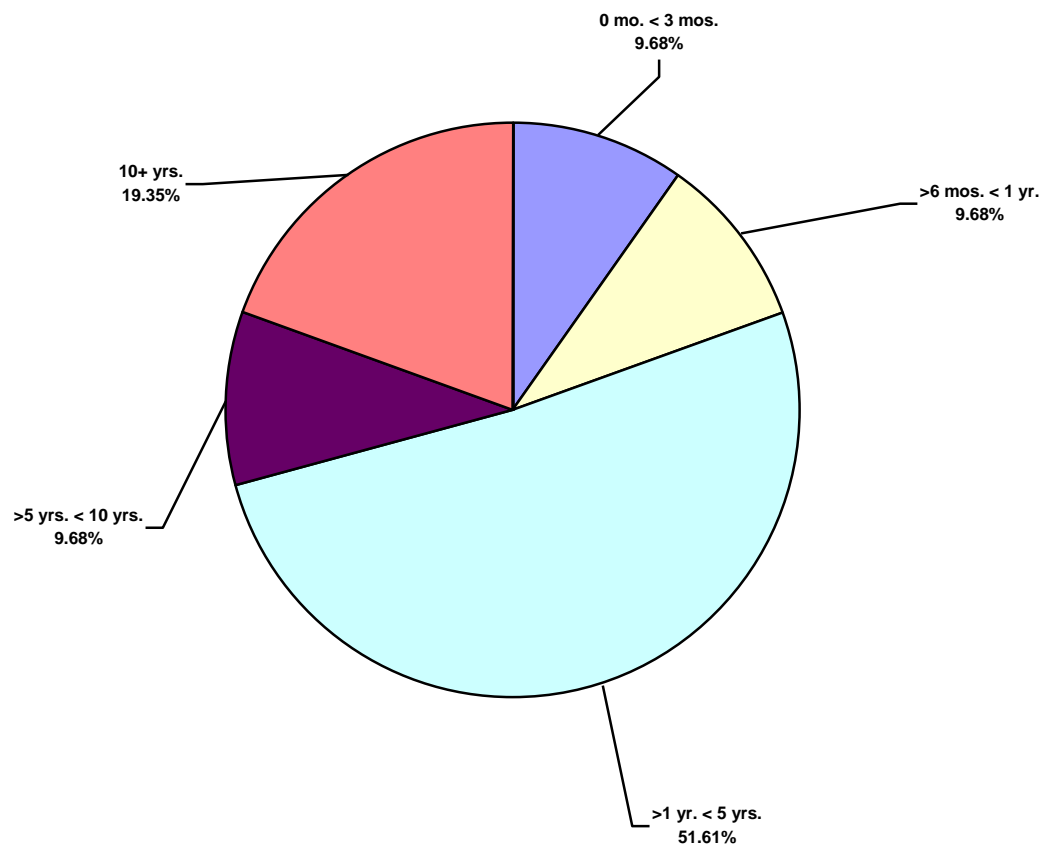




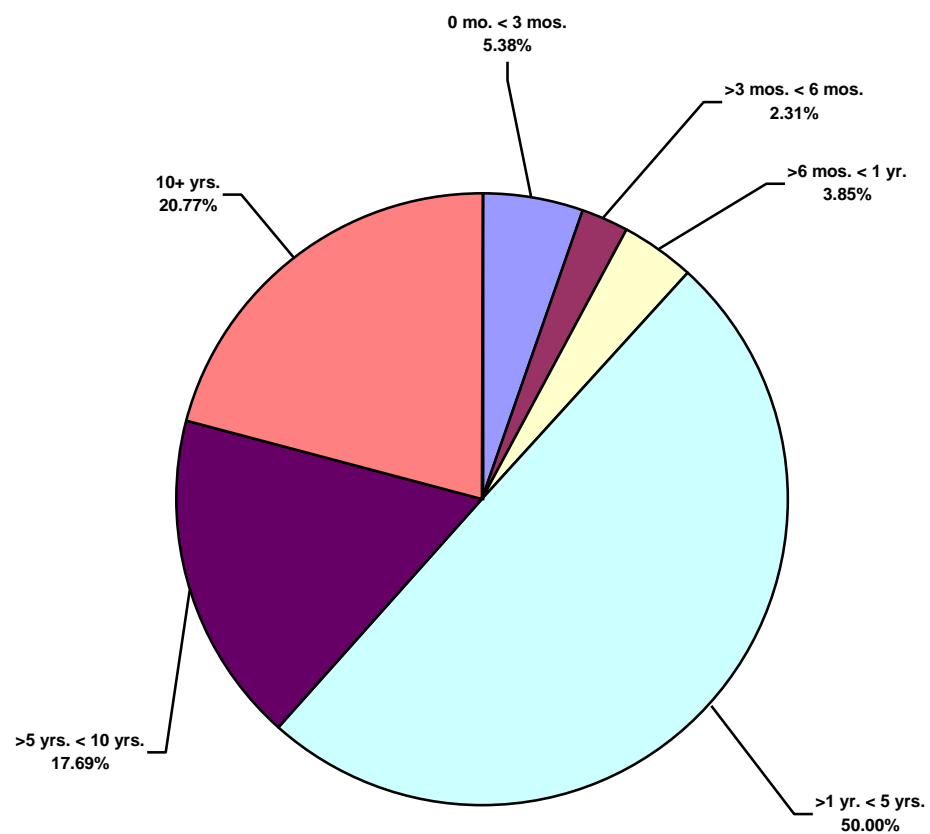
**Middle East Land Total Recordable Incidents by Location (Chart 14)**  
Based on 132 Incidents



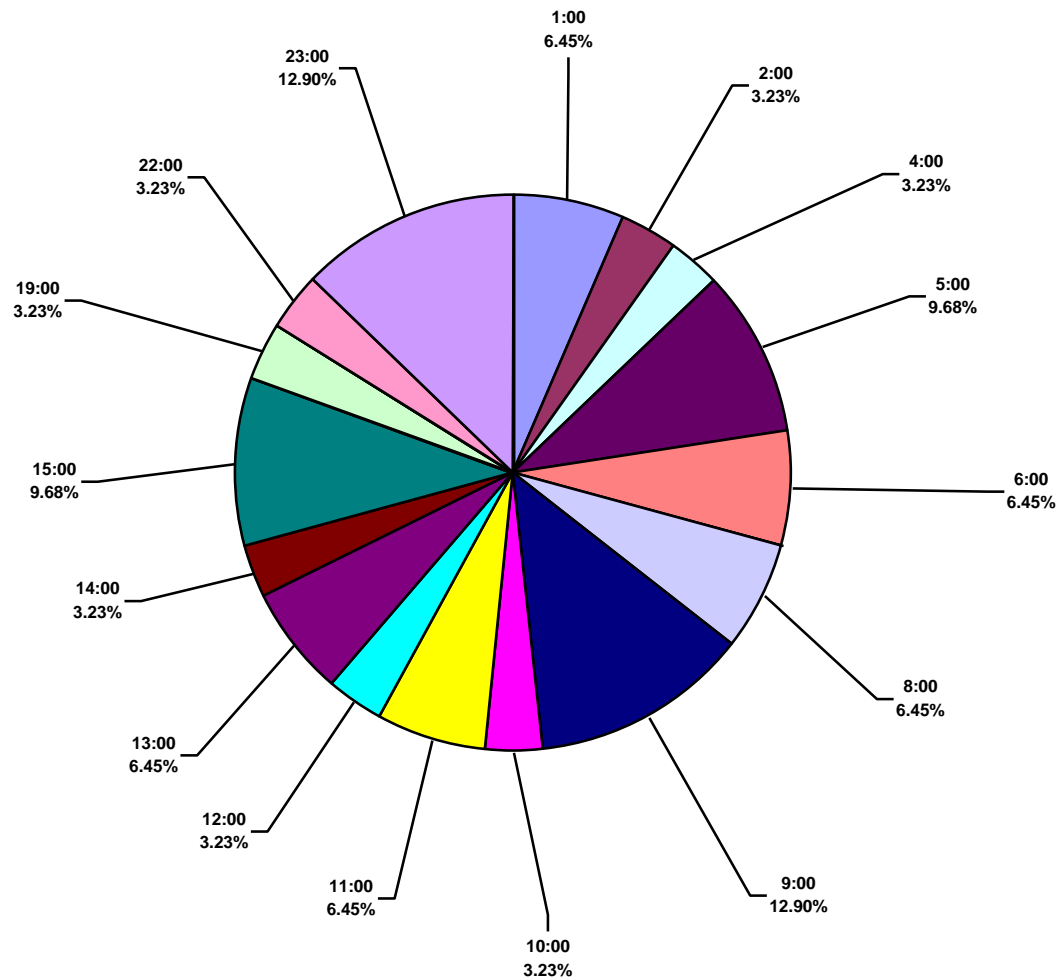
**Middle East Land Total Lost Time Incidents by Time in Service (Chart 15)**  
Based on 31 Incidents



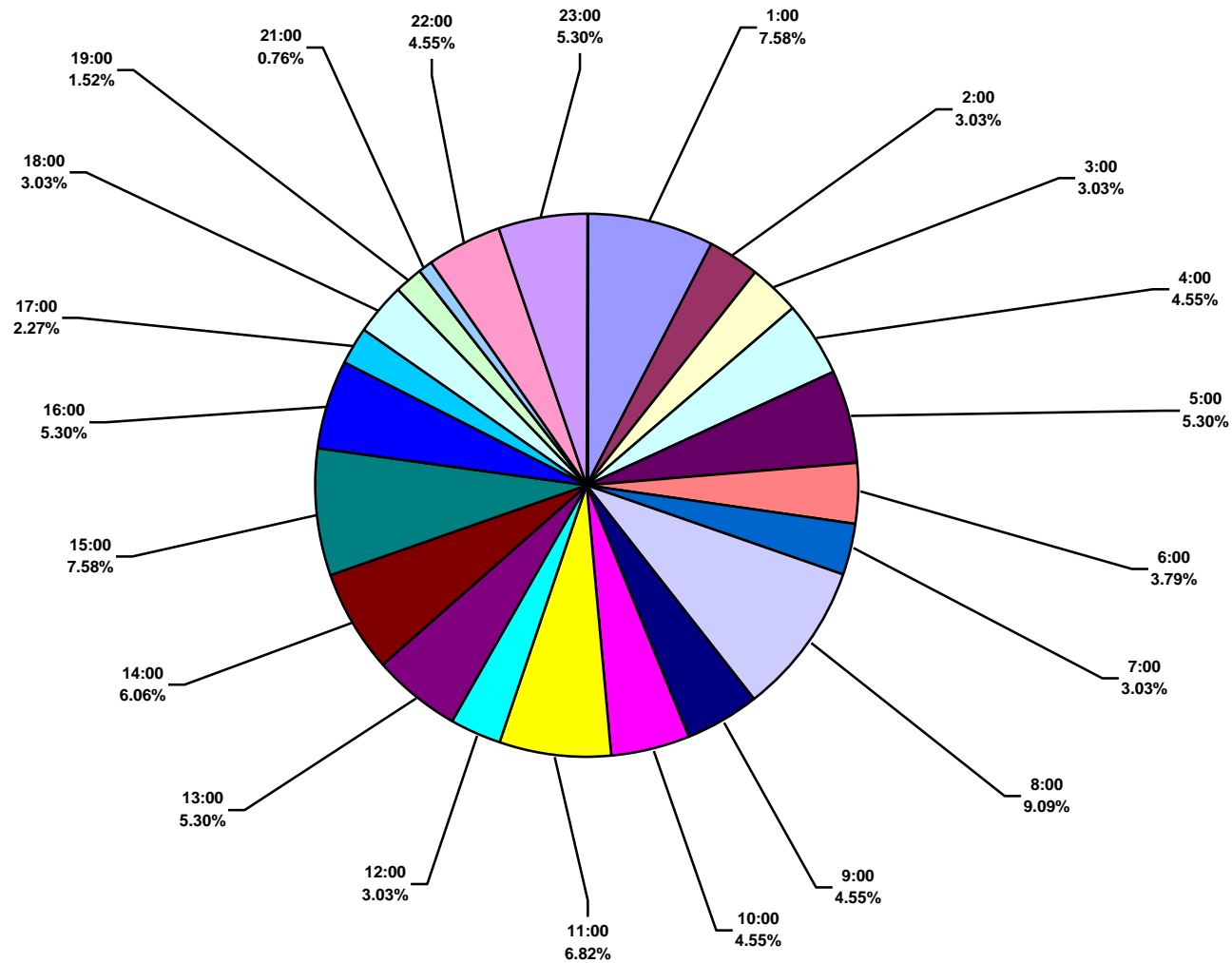
**Middle East Land Total Recordable Incidents by Time in Service (Chart 16)**  
Based on 131 Incidents



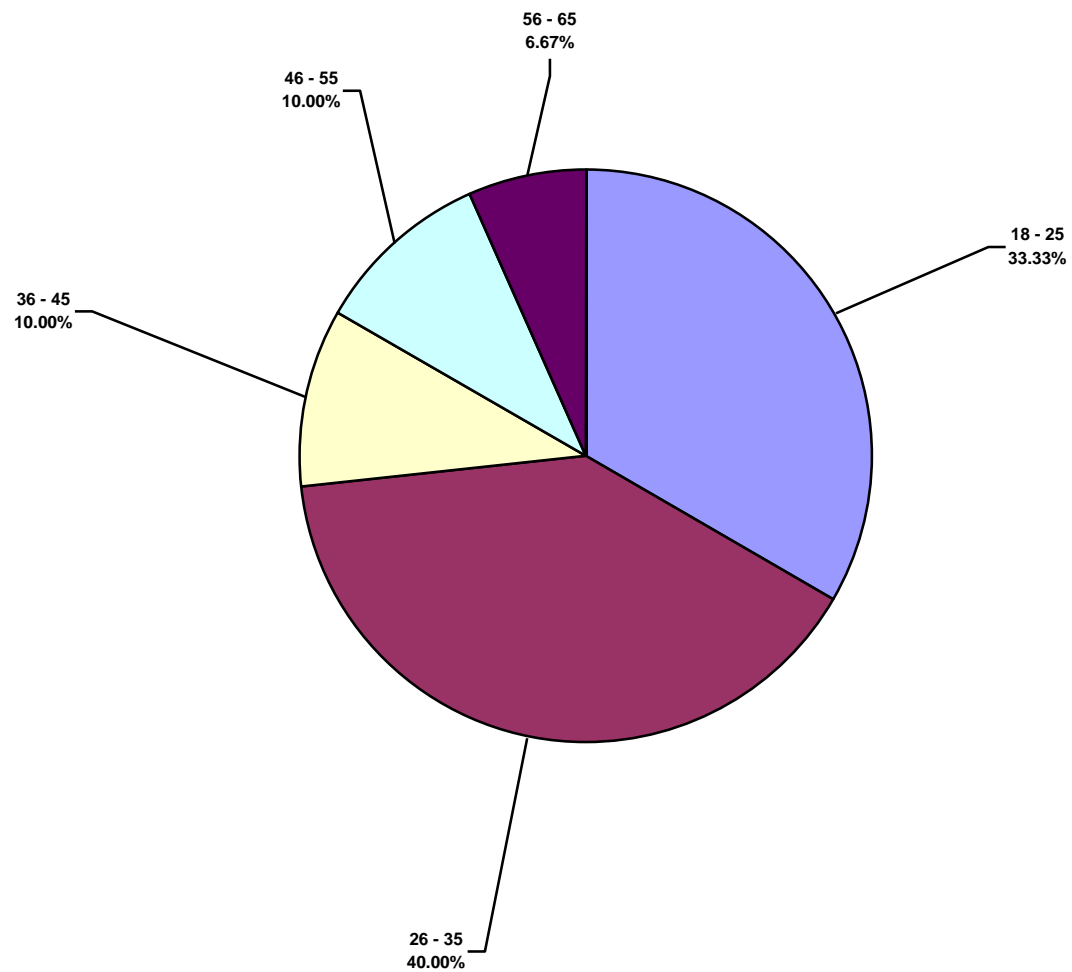
**Middle East Land Total Lost Time Incidents by Time of Day (Chart 17)**  
Based on 31 Incidents



**Middle East Land Total Recordable Incidents by Time of Day (Chart 18)**  
Based on 132 Incidents



**Middle East Land Total Lost Time Incidents by Age (Chart 19)**  
Based on 30 Incidents



**Middle East Land Total Recordable Incidents by Age (Chart 20)**  
Based on 125 Incidents

