



IADC

**IADC
ISP PROGRAM**

2018



**Summary of Occupational
Incidents
(Australasia Land Totals)**

Issued 15 June 2019

Table of Contents

(Table of Contents is Hyperlinked, Just click on Topic & go)

IADC 2018 AUSTRALASIA LAND TOTALS (TABLE 1)	1
<i>Australasia Land Total Incidence Rates vs Man-hours (Figure 1)</i>	1
IADC 2018 AUSTRALASIA LAND CHARTS	2
<i>Australasia Land Total Recordable Incidents by Month (Chart 2)</i>	2
<i>Australasia Land Total Recordable Incidents by Occupation (Chart 4)</i>	3
<i>Australasia Land Total Recordable Incidents by Body Part (Chart 6)</i>	4
<i>Australasia Land Total Recordable Incidents by Incident Type (Chart 8)</i>	5
<i>Australasia Land Total Recordable Incidents by Equipment (Chart 10)</i>	6
<i>Australasia Land Total Recordable Incidents by Operation (Chart 12)</i>	7
<i>Australasia Land Total Recordable Incidents by Location (Chart 14)</i>	8
<i>Australasia Land Total Recordable Incidents by Time in Service (Chart 16)</i>	9
<i>Australasia Land Total Recordable Incidents by Time of Day (Chart 18)</i>	10
<i>Australasia Land Total Recordable Incidents by Age (Chart 20)</i>	11

IADC 2018 Australasia Land Totals (Table 1)

	<u>Total</u>
Total Man-hours	3,809,566
Total Medical Treatment Incidents	9
Total Restricted Work Incidents	6
Total Lost Time Incidents	10
Total Fatalities	0
Total Recordables	25
MTO Incidence Rate	0.47
RWC Incidence Rate	0.31
LTI Incidence Rate	0.52
LTI Frequency Rate	2.62
DART Incidence Rate	0.84
DART Frequency Rate	4.20
Recordable Incidence Rate	1.31
Recordable Frequency Rate	6.56

Companies Reporting: Land – 6

Medical Treatment Incidence Rate = MTOs X 200,000

Restricted Work Incidence Rate = RWCs X 200,000

Lost Time Incidence Rate = LTIs + FTLs X 200,000

DART Incidence Rate = LTIs + RWC X 200,000

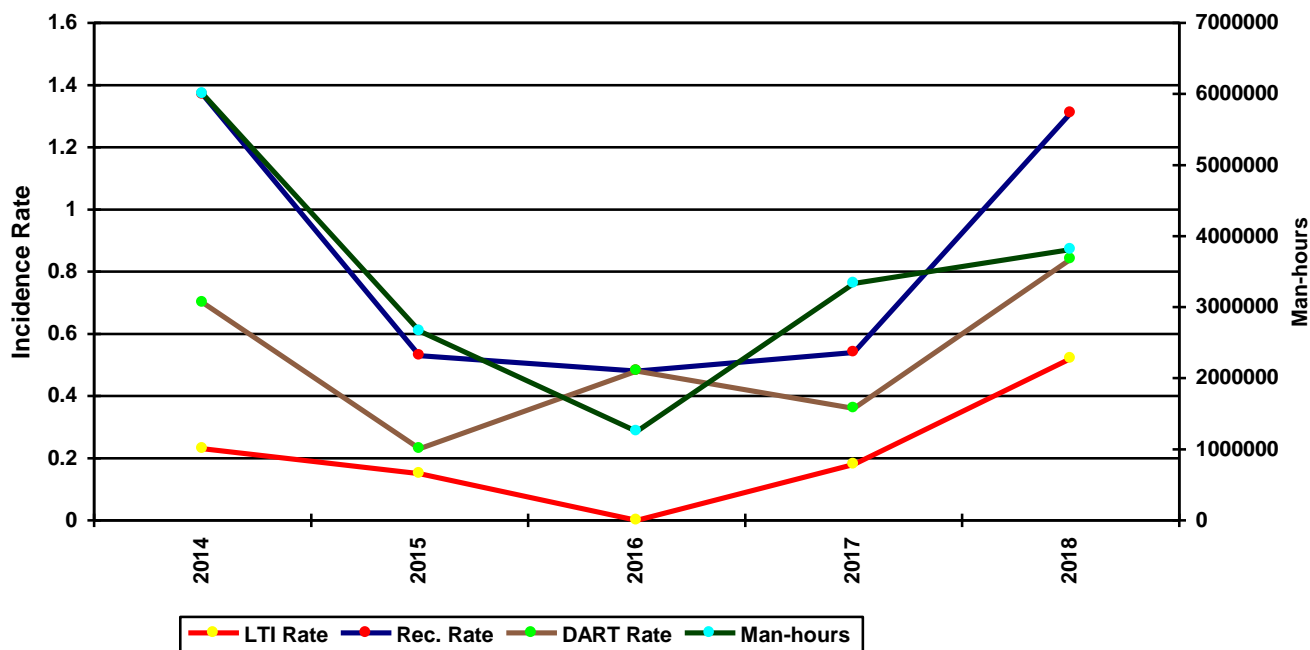
Recordable Incidence Rate = RCRD X 200,000

Lost Time Frequency Rate = LTIs +FTLs X 1,000,000

DART Frequency Rate = LTIs + RWC X 1,000,000

Recordable Frequency Rate = RCRD X 1,000,000

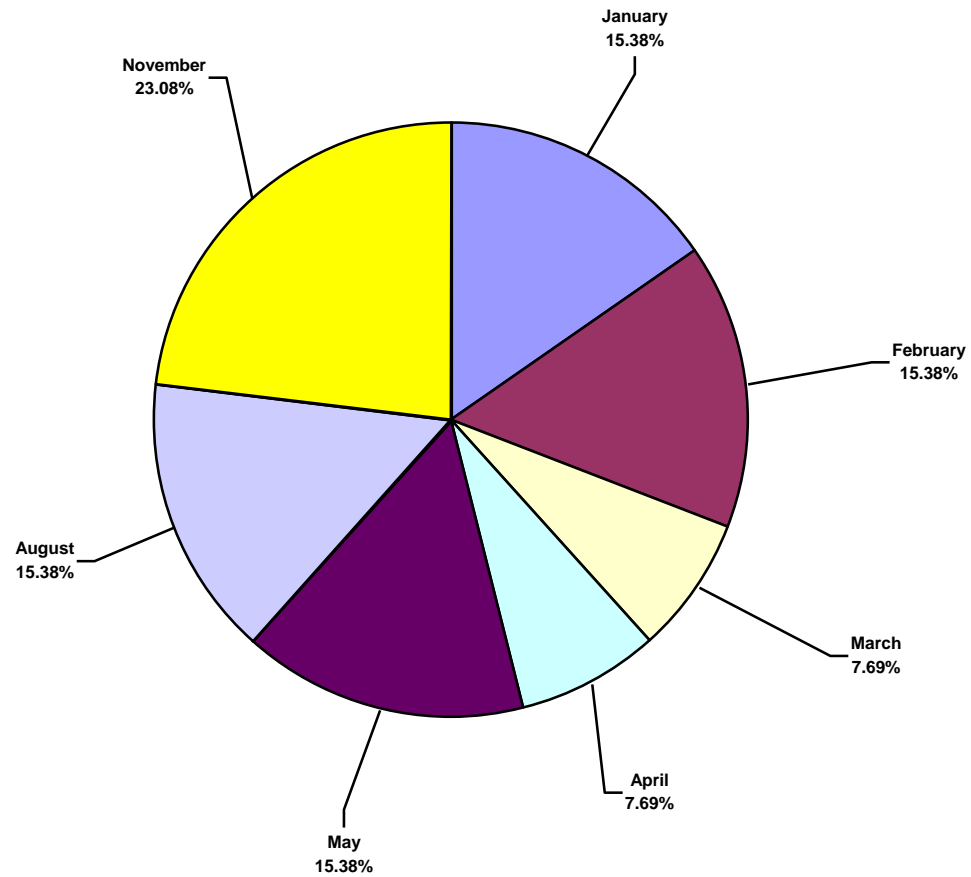
Australasia Land Total Incidence Rates vs Man-hours (Figure 1)



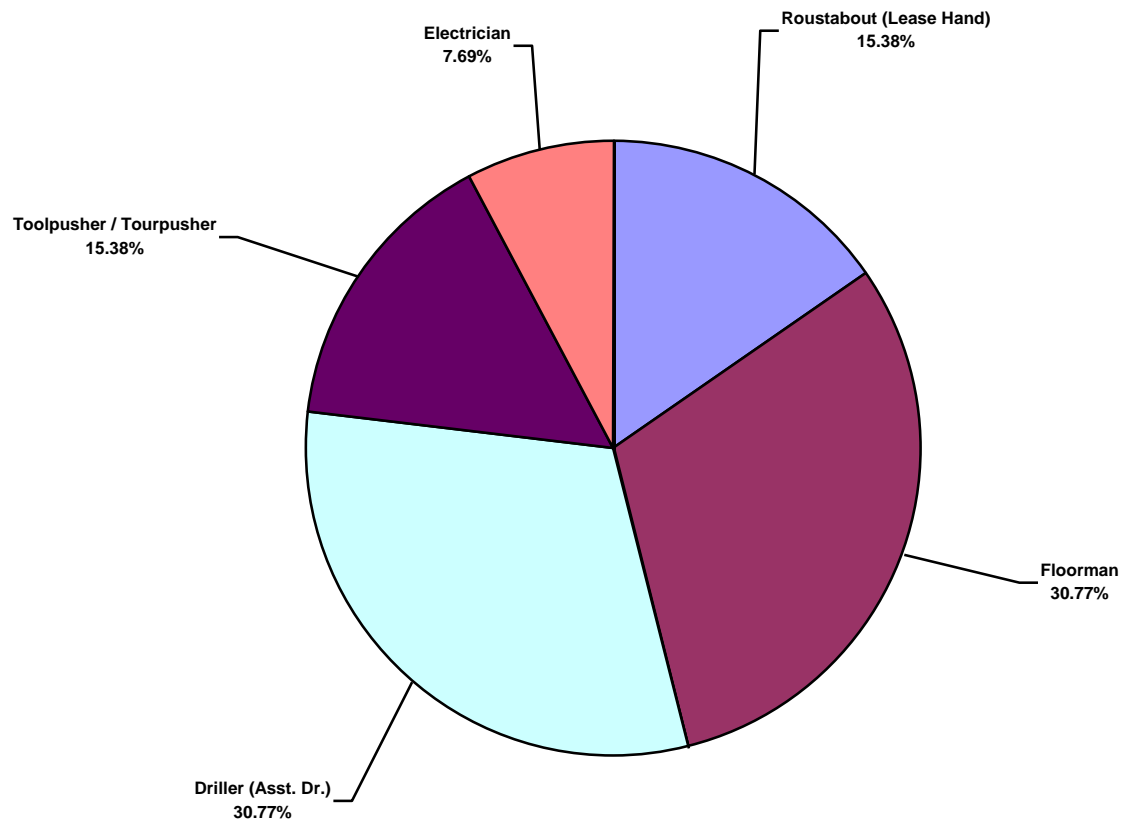
IADC 2018 Australasia Land Charts

Australasia Land Total Recordable Incidents by Month (Chart 1)

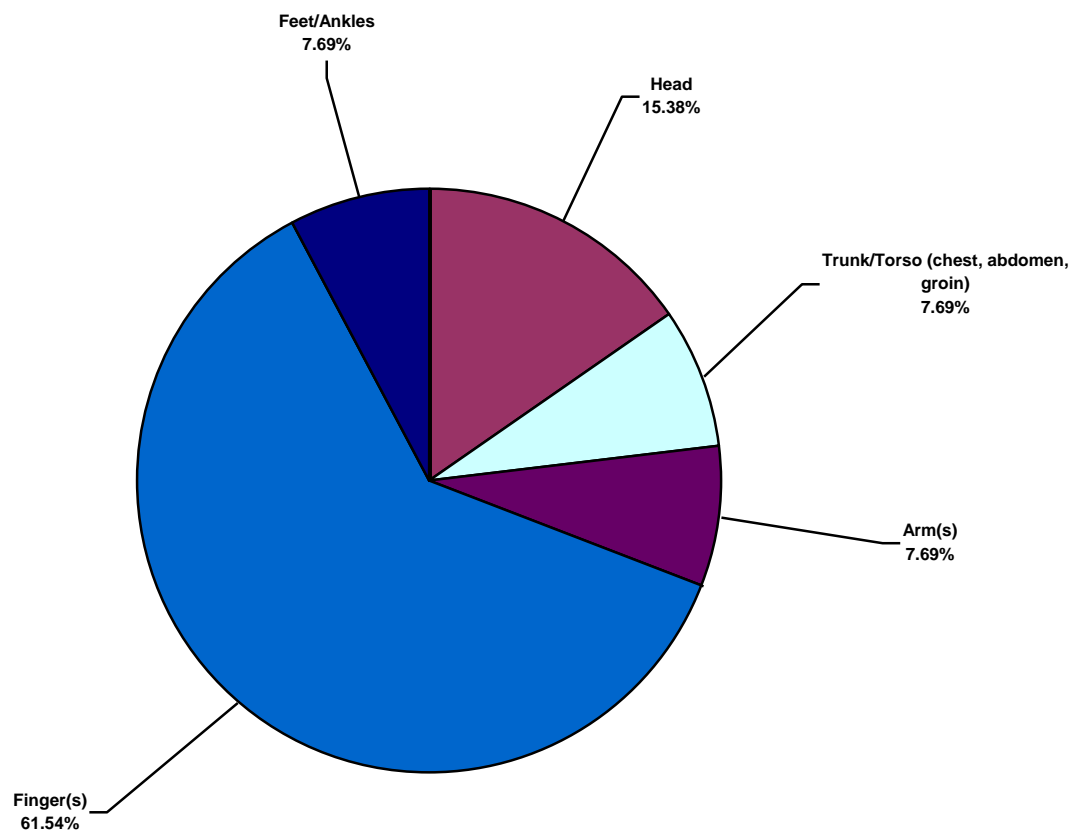
Based on 13 Incidents



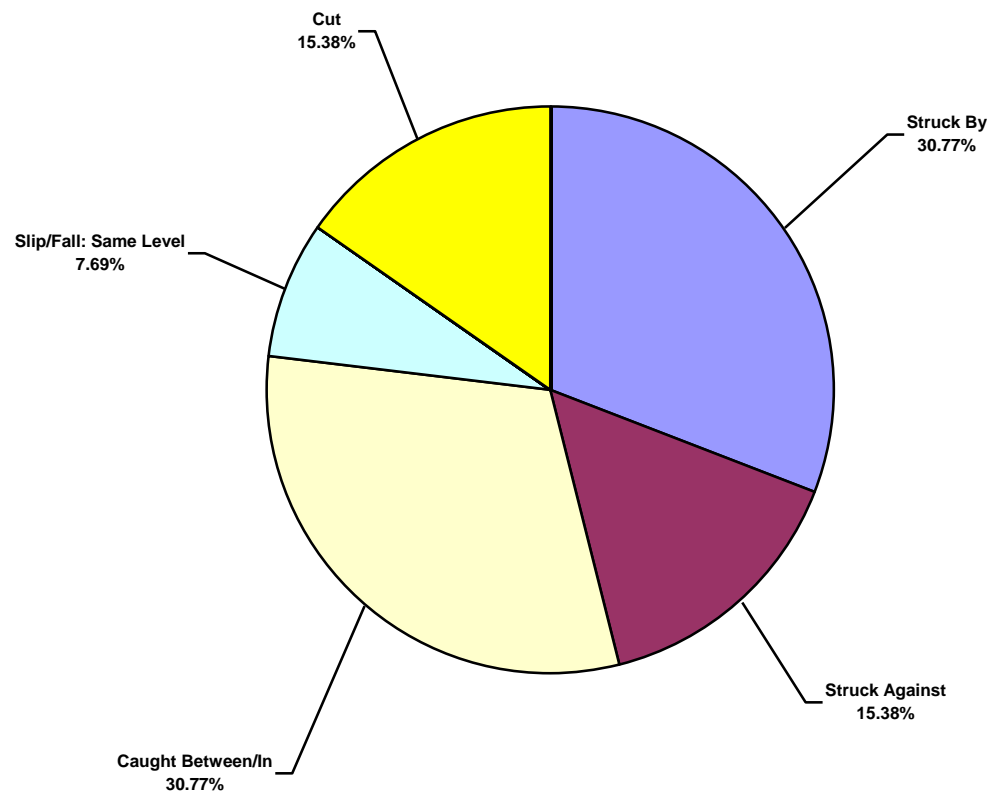
Australasia Land Total Recordable Incidents by Occupation (Chart 2)
Based on 13 Incidents



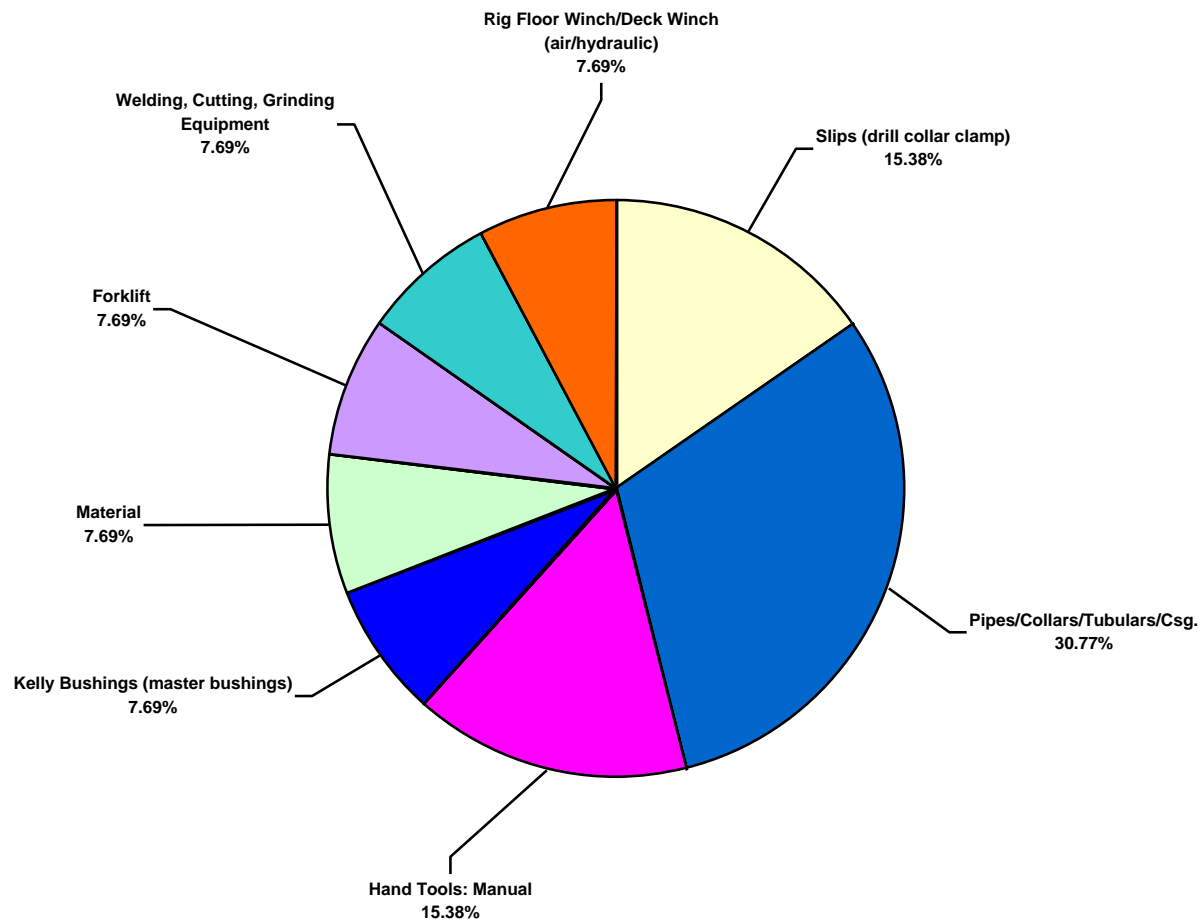
Australasia Land Total Recordable Incidents by Body Part (Chart 3)
Based on 13 Incidents



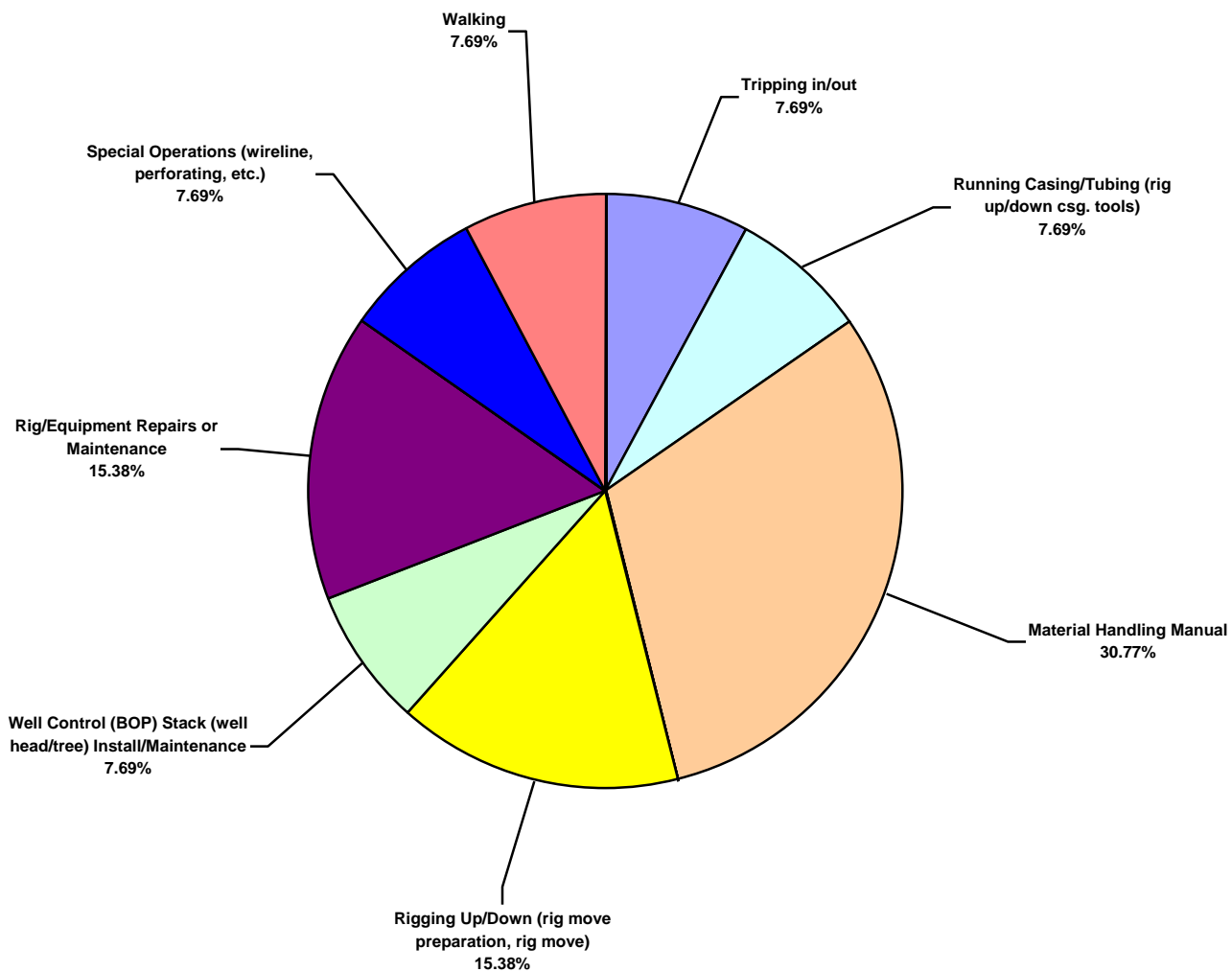
Australasia Land Total Recordable Incidents by Incident Type (Chart 4)
Based on 13 Incidents



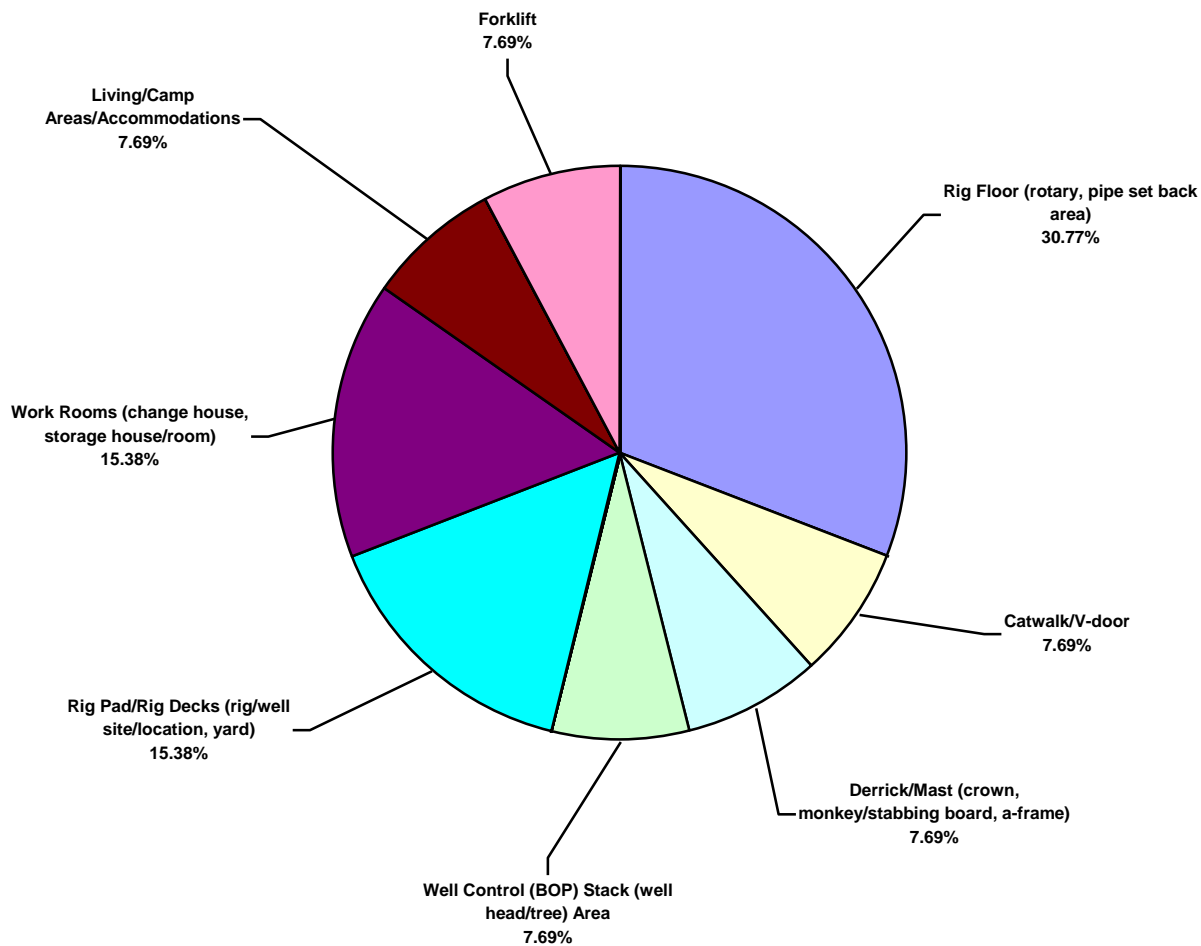
Australasia Land Total Recordable Incidents by Equipment (Chart 5)
Based on 13 Incidents



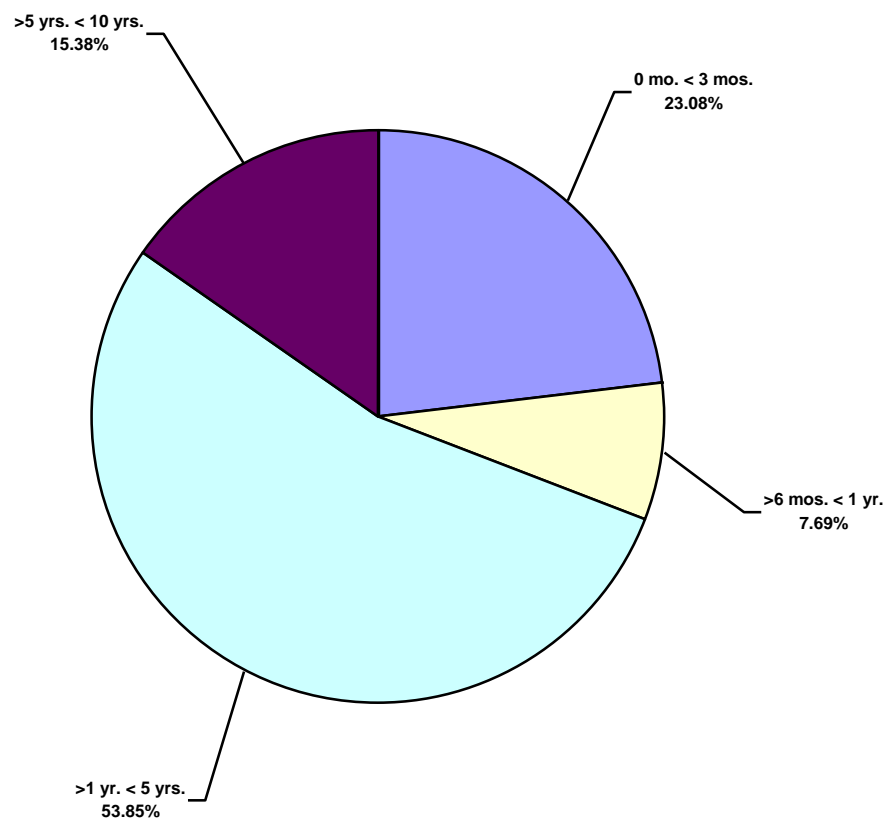
Australasia Land Total Recordable Incidents by Operation (Chart 6)
Based on 13 Incidents



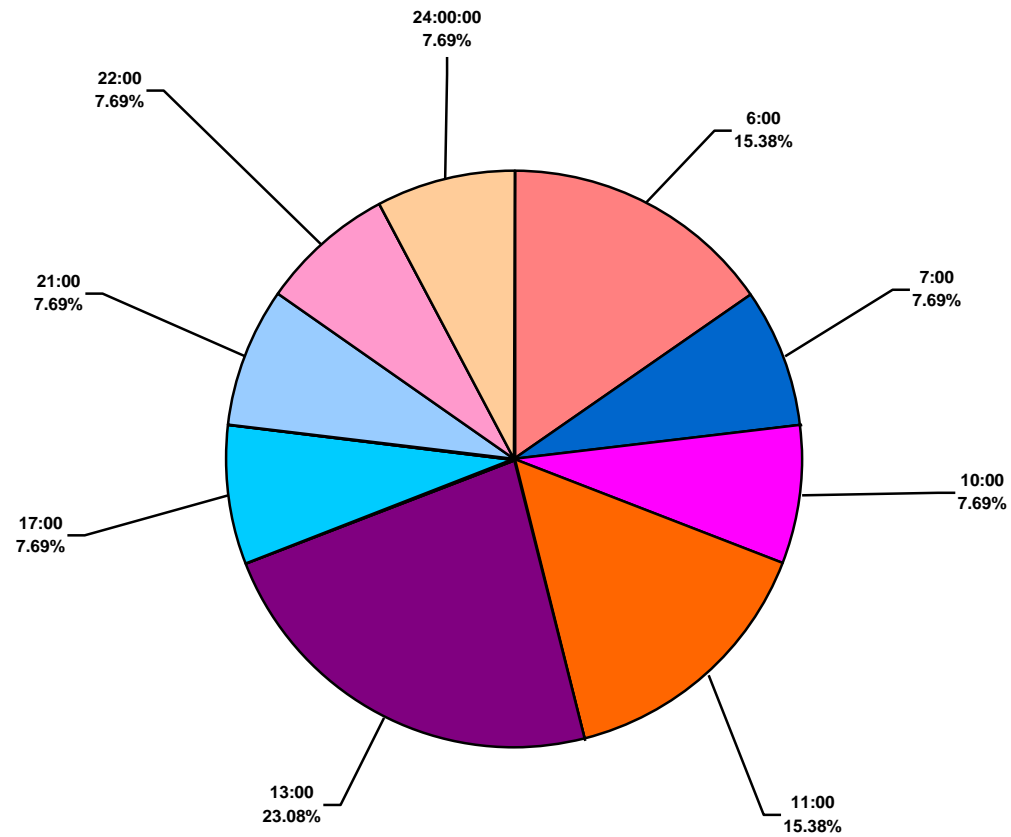
Australasia Land Total Recordable Incidents by Location (Chart 7)
Based on 13 Incidents



Australasia Land Total Recordable Incidents by Time in Service (Chart 8)
Based on 13 Incidents



Australasia Land Total Recordable Incidents by Time of Day (Chart 9)
Based on 13 Incidents



Australasia Land Total Recordable Incidents by Age (Chart 10)
Based on 13 Incidents

