



IADC

**IADC
ISP PROGRAM**

2018



**Summary of Occupational
Incidents
(Africa Land Totals)**

Issued 15 June 2019

Table of Contents

(Table of Contents is Hyperlinked, Just click on Topic & go)

| | |
|---|----|
| IADC 2018 AFRICA LAND TOTALS (TABLE 1) | 1 |
| <i>Africa Land Total Incidence Rates vs Man-hours (Figure 1)</i> | 1 |
| IADC 2018 AFRICA LAND CHARTS | 2 |
| <i>Africa Land Total Lost Time Incidents by Month (Chart 1)</i> | 2 |
| <i>Africa Land Total Recordable Incidents by Month (Chart 2)</i> | 3 |
| <i>Africa Land Total Lost Time Incidents by Occupation (Chart 3)</i> | 4 |
| <i>Africa Land Total Recordable Incidents by Occupation (Chart 4)</i> | 5 |
| <i>Africa Land Total Lost Time Incidents by Body Part (Chart 5)</i> | 6 |
| <i>Africa Land Total Recordable Incidents by Body Part (Chart 6)</i> | 7 |
| <i>Africa Land Total Lost Time Incidents by Incident Type (Chart 7)</i> | 8 |
| <i>Africa Land Total Recordable Incidents by Incident Type (Chart 8)</i> | 9 |
| <i>Africa Land Total Lost Time Incidents by Equipment (Chart 9)</i> | 10 |
| <i>Africa Land Total Recordable Incidents by Equipment (Chart 10)</i> | 11 |
| <i>Africa Land Total Lost Time Incidents by Operation (Chart 11)</i> | 12 |
| <i>Africa Land Total Recordable Incidents by Operation (Chart 12)</i> | 13 |
| <i>Africa Land Total Lost Time Incidents by Location (Chart 13)</i> | 14 |
| <i>Africa Land Total Recordable Incidents by Location (Chart 14)</i> | 15 |
| <i>Africa Land Total Lost Time Incidents by Time in Service (Chart 15)</i> | 16 |
| <i>Africa Land Total Recordable Incidents by Time in Service (Chart 16)</i> | 17 |
| <i>Africa Land Total Lost Time Incidents by Time of Day (Chart 17)</i> | 18 |
| <i>Africa Land Total Recordable Incidents by Time of Day (Chart 18)</i> | 19 |
| <i>Africa Land Total Lost Time Incidents by Age (Chart 19)</i> | 20 |
| <i>Africa Land Total Recordable Incidents by Age (Chart 20)</i> | 21 |

IADC 2018 Africa Land Totals (Table 1)

| | <u>Total</u> |
|--|-------------------|
| Total Man-hours | 32,146,957 |
| Total Medical Treatment Incidents | 26 |
| Total Restricted Work Incidents | 151 |
| Total Lost Time Incidents | 88 |
| Total Fatalities | 3 |
| Total Recordables | 268 |
| | |
| MTO Incidence Rate | 0.16 |
| RWC Incidence Rate | 0.94 |
| LTI Incidence Rate | 0.57 |
| LTI Frequency Rate | 2.83 |
| DART Incidence Rate | 1.51 |
| DART Frequency Rate | 7.53 |
| Recordable Incidence Rate | 1.67 |
| Recordable Frequency Rate | 8.34 |

Companies Reporting: Land – 13

Medical Treatment Incidence Rate = MTOs X 200,000

Restricted Work Incidence Rate = RWCs X 200,000

Lost Time Incidence Rate = LTIs + FTLs X 200,000

DART Incidence Rate = LTIs + RWC X 200,000

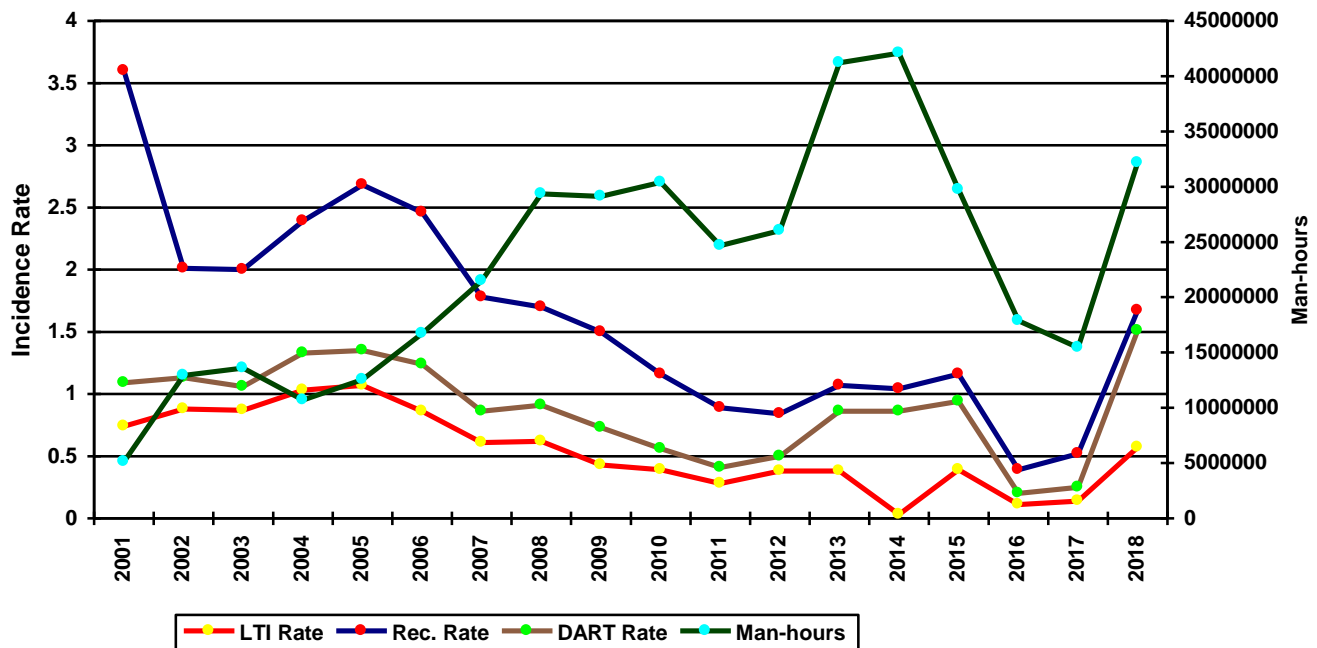
Recordable Incidence Rate = RCRD X 200,000

Lost Time Frequency Rate = LTIs +FTLs X 1,000,000

DART Frequency Rate = LTIs + RWC X 1,000,000

Recordable Frequency Rate = RCRD X 1,000,000

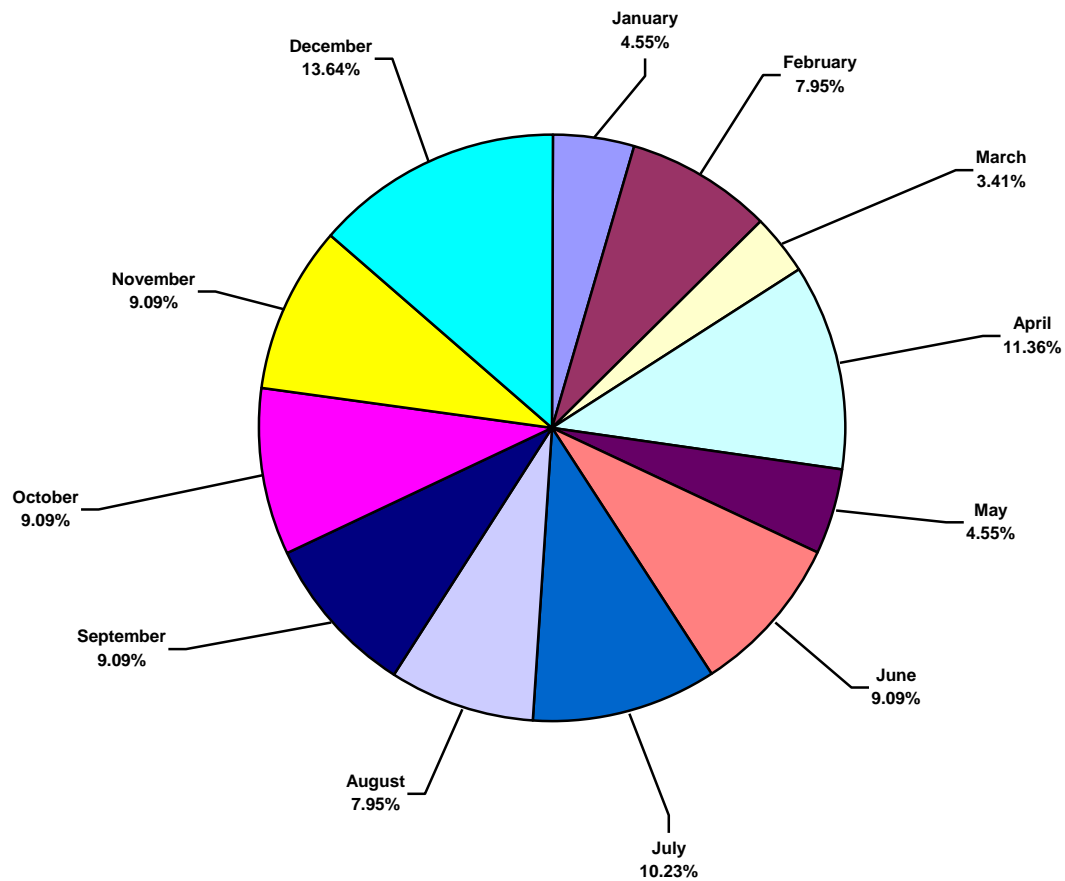
Africa Land Total Incidence Rates vs Man-hours (Figure 1)



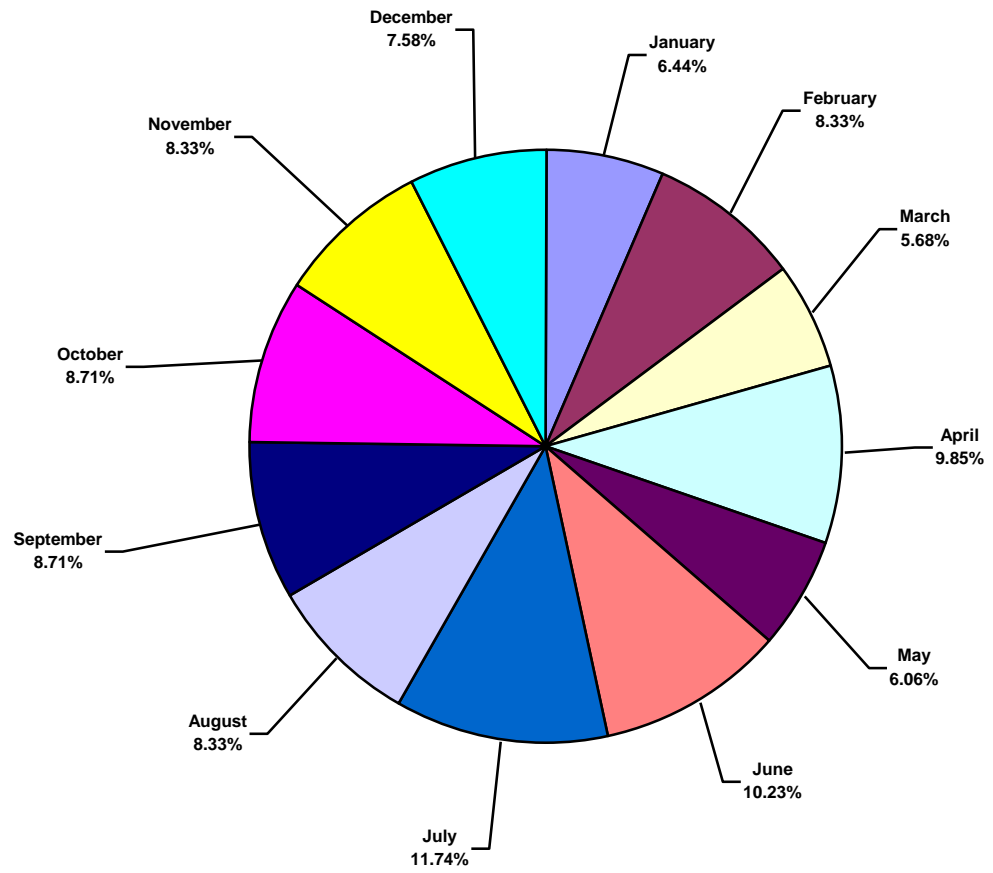
IADC 2018 Africa Land Charts

Africa Land Total Lost Time Incidents by Month (Chart 1)

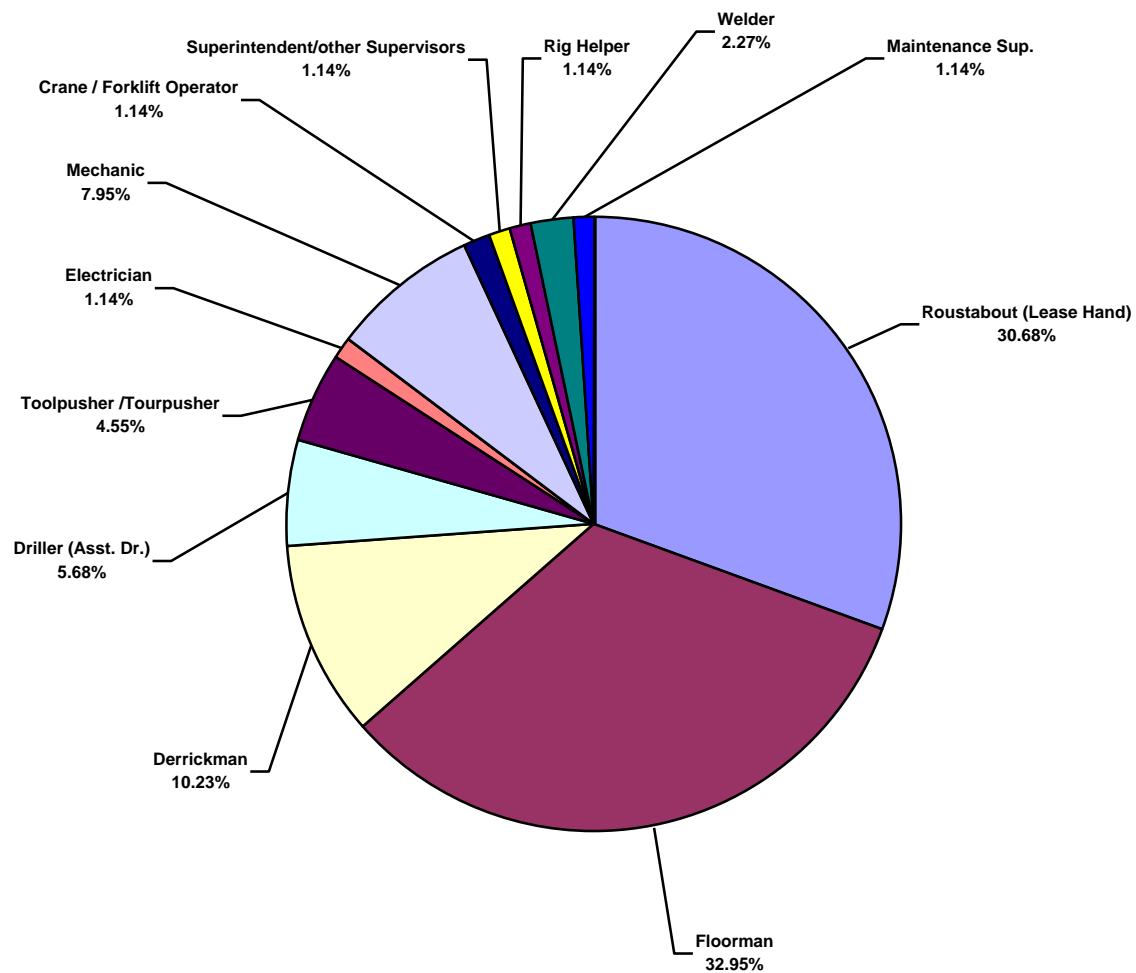
Based on 88 Incidents



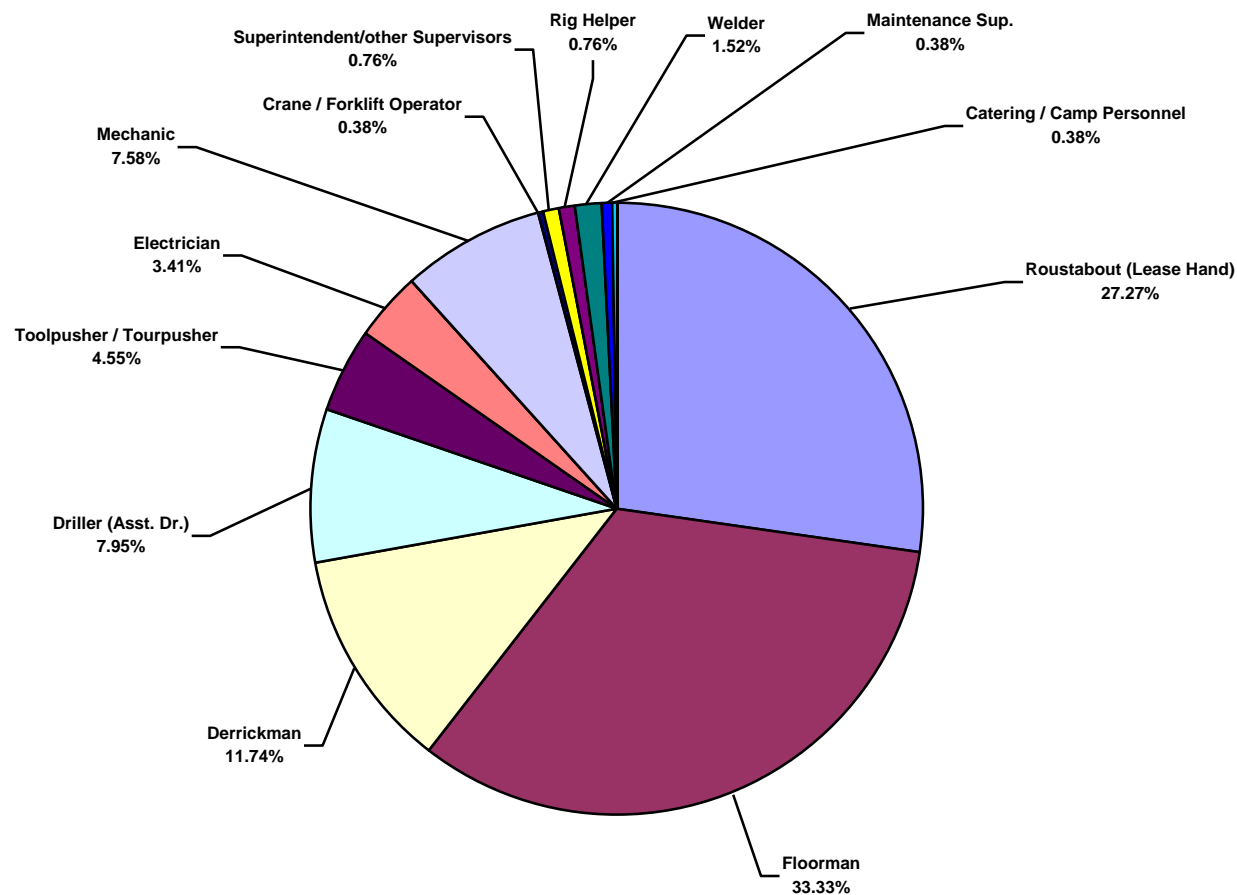
Africa Land Total Recordable Incidents by Month (Chart 2)
Based on 264 Incidents



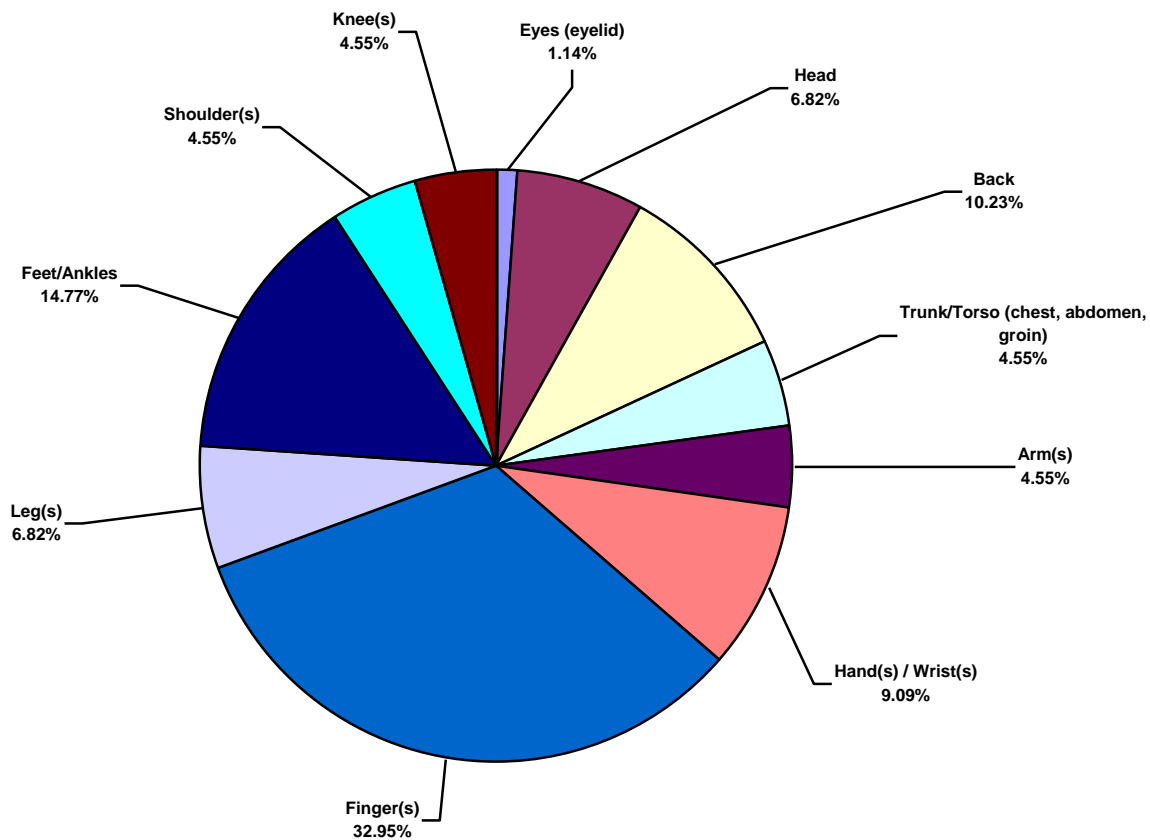
Africa Land Total Lost Time Incidents by Occupation (Chart 3)
Based on 88 Incidents



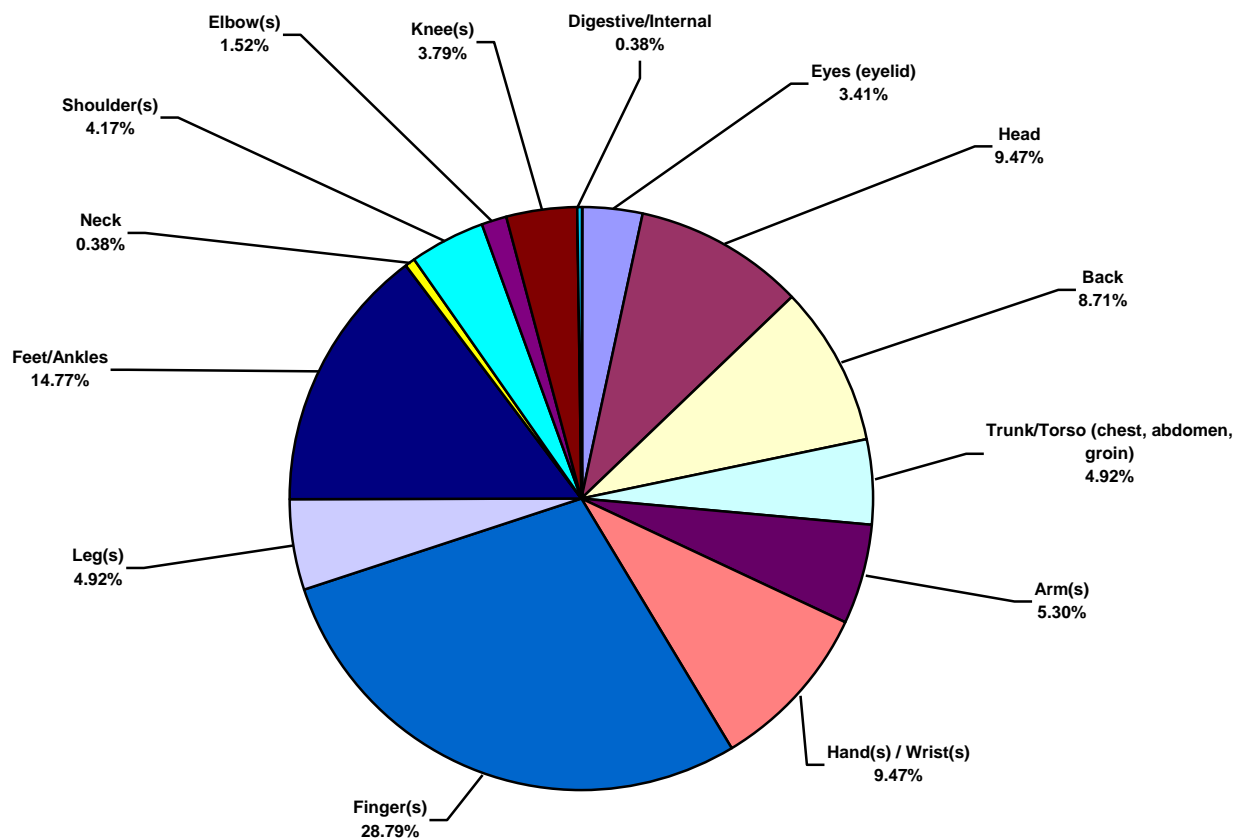
Africa Land Total Recordable Incidents by Occupation (Chart 4)
Based on 264 Incidents



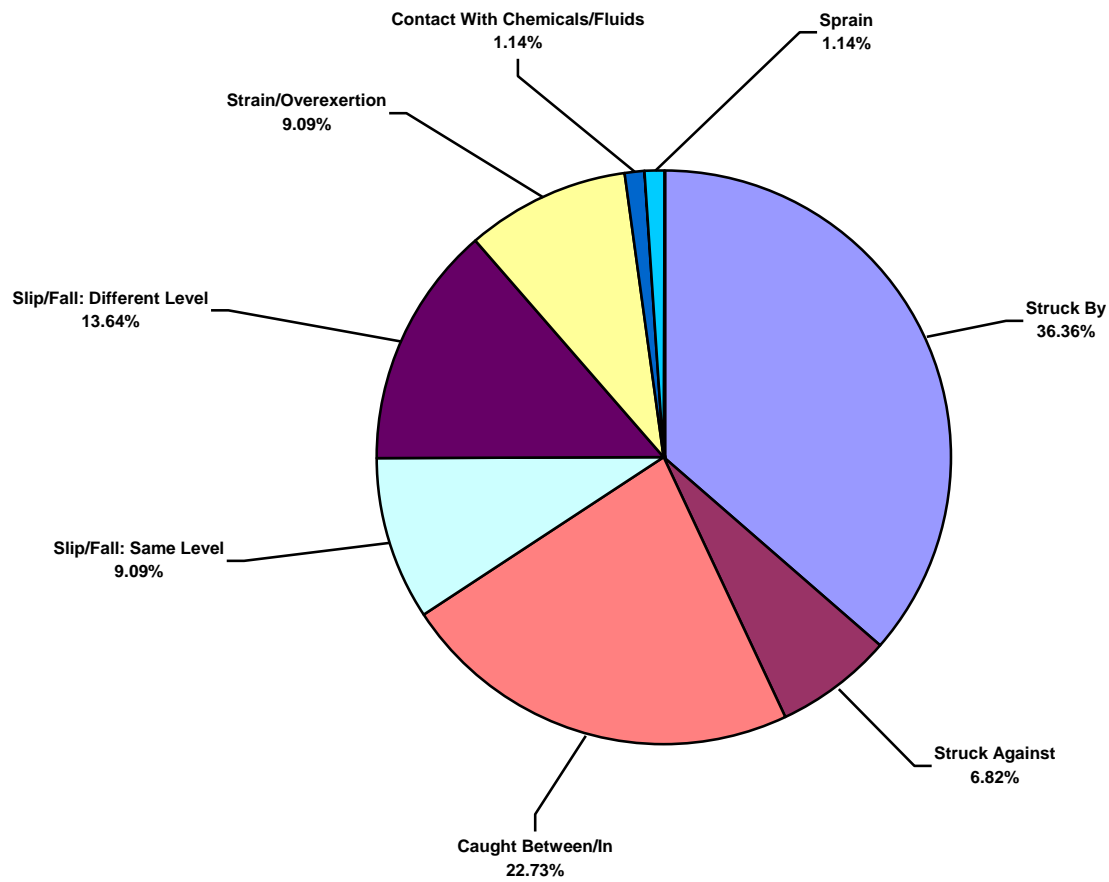
Africa Land Total Lost Time Incidents by Body Part (Chart 5)
Based on 88 Incidents



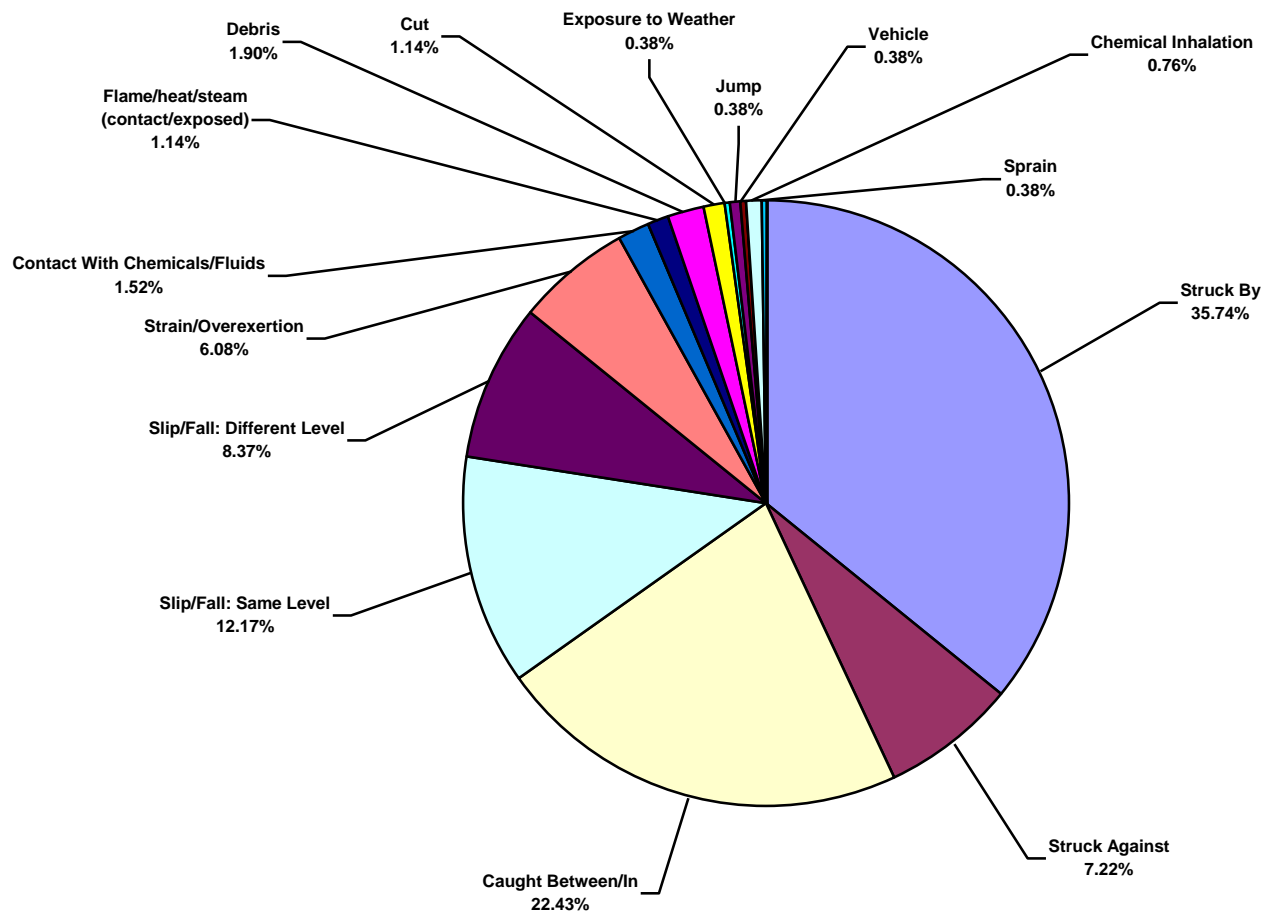
Africa Land Total Recordable Incidents by Body Part (Chart 6)
Based on 264 Incidents



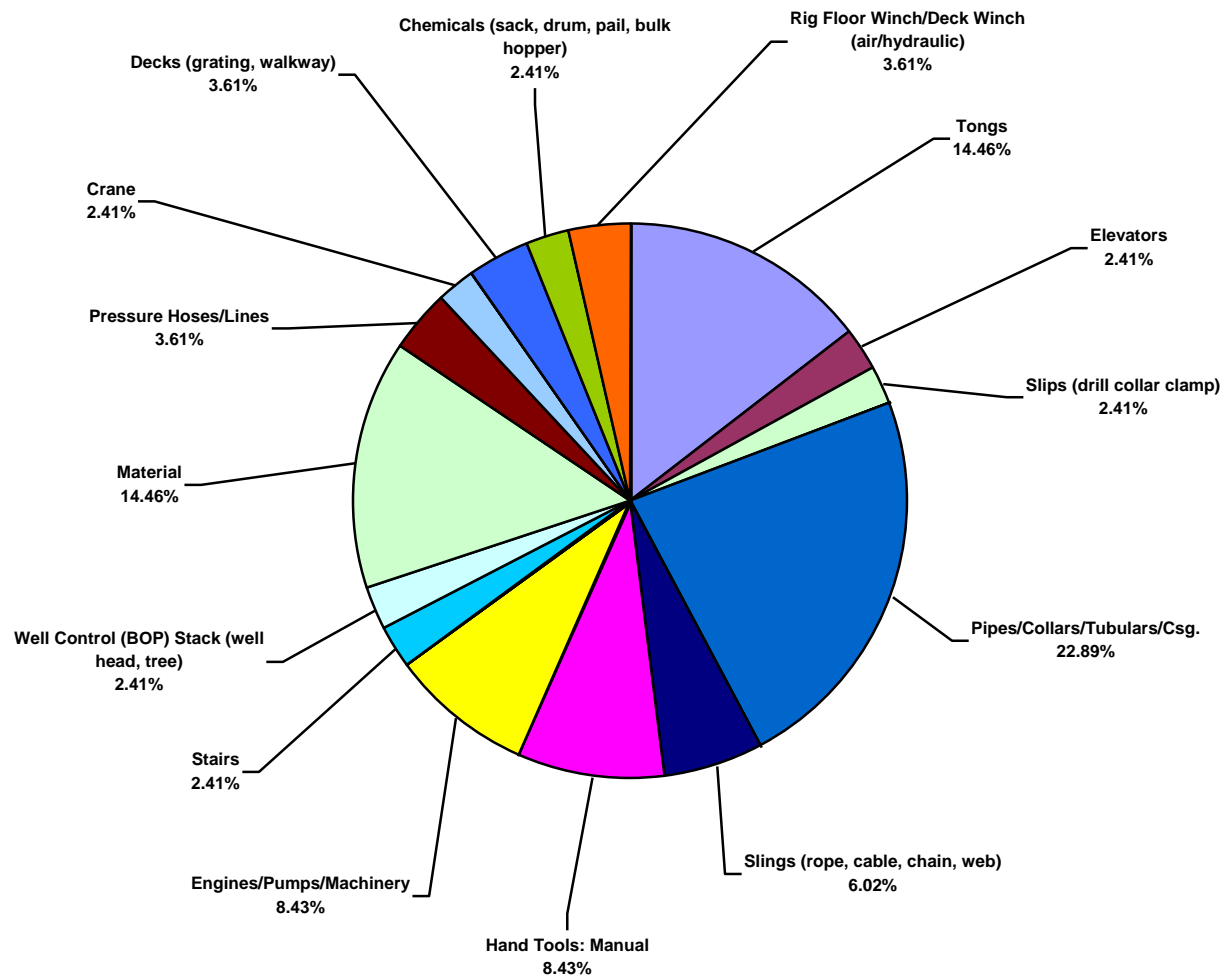
Africa Land Total Lost Time Incidents by Incident Type (Chart 7)
Based on 88 Incidents



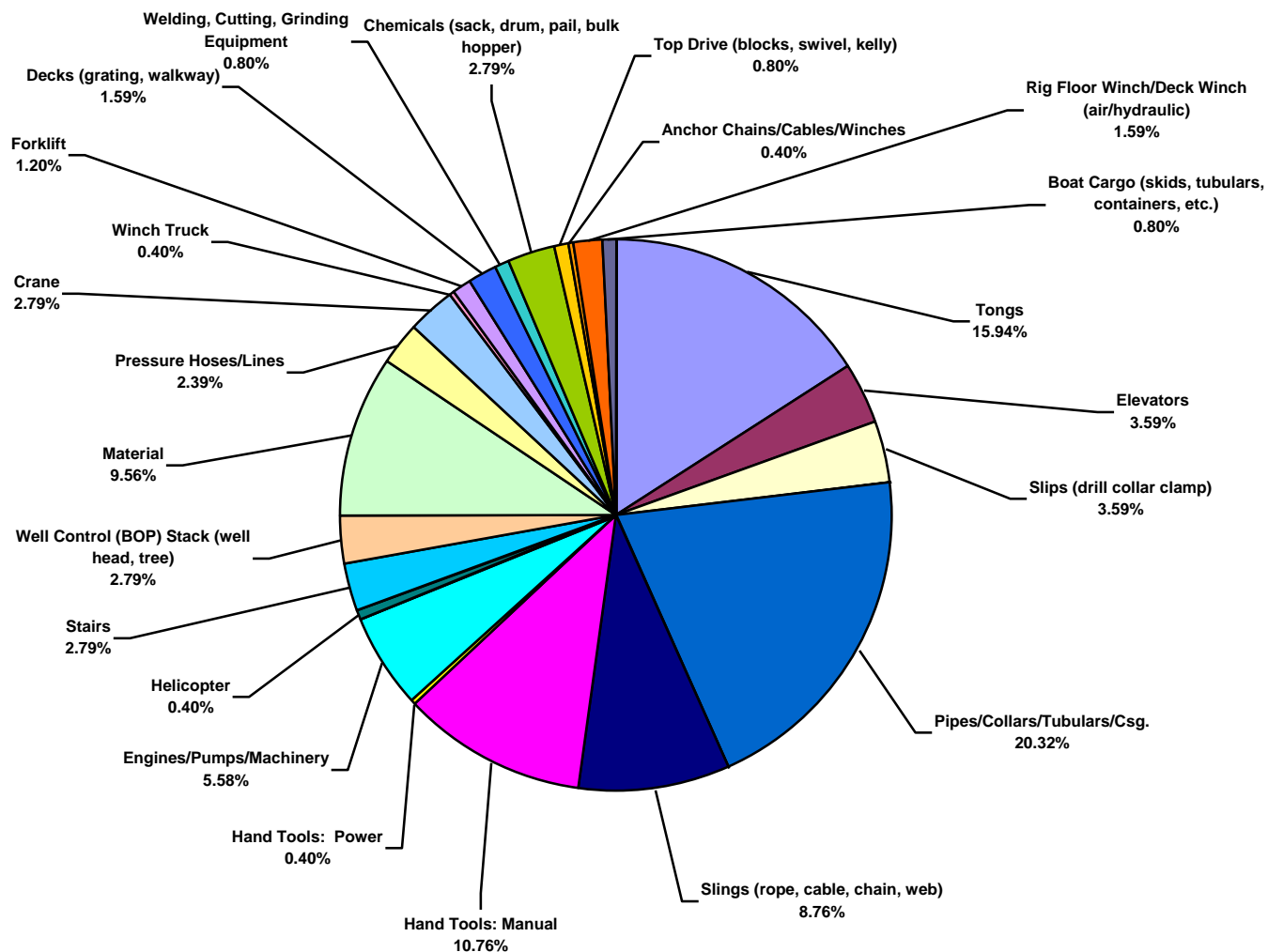
Africa Land Total Recordable Incidents by Incident Type (Chart 8)
Based on 263 Incidents



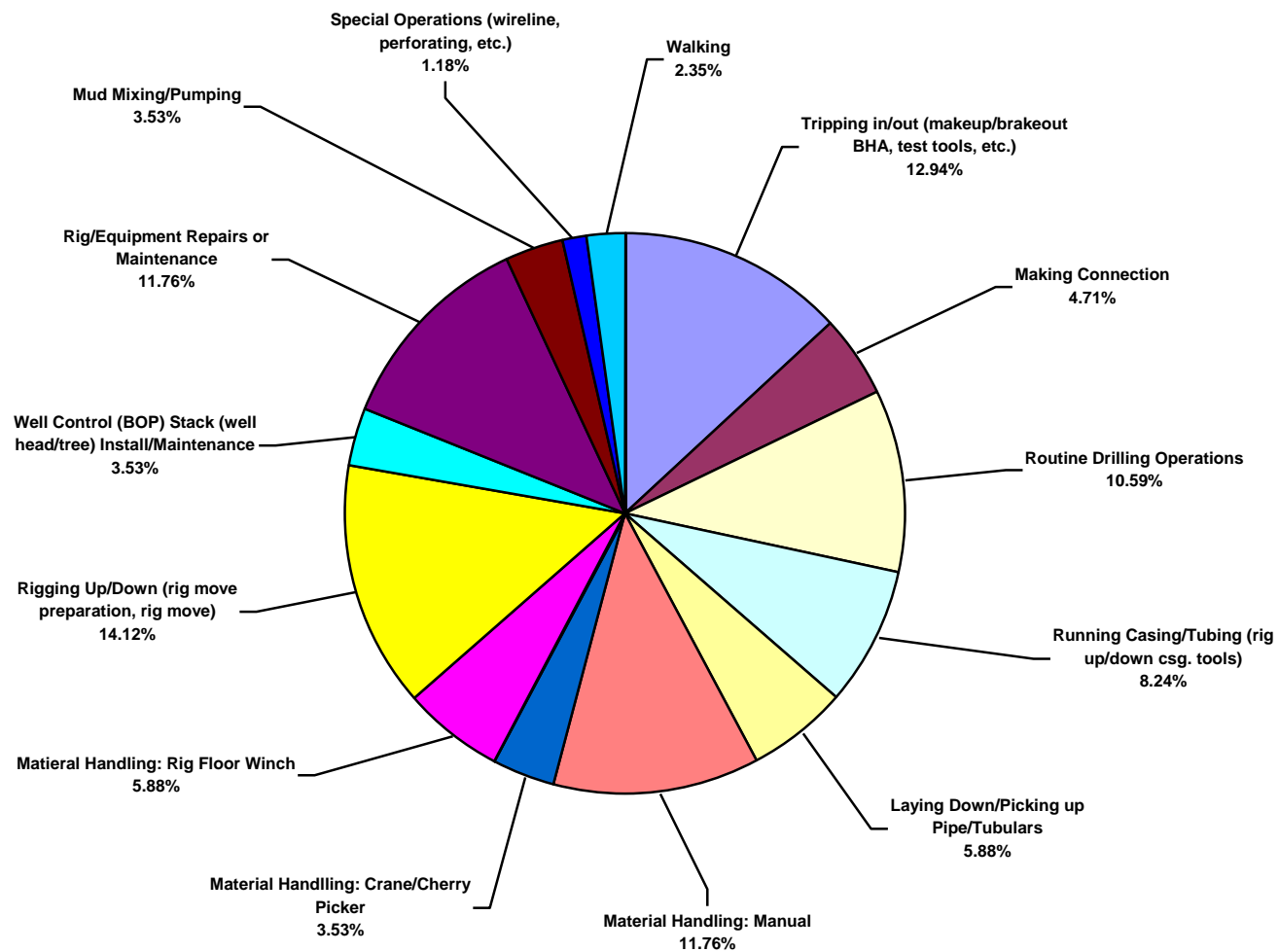
Africa Land Total Lost Time Incidents by Equipment (Chart 9)
Based on 83 Incidents



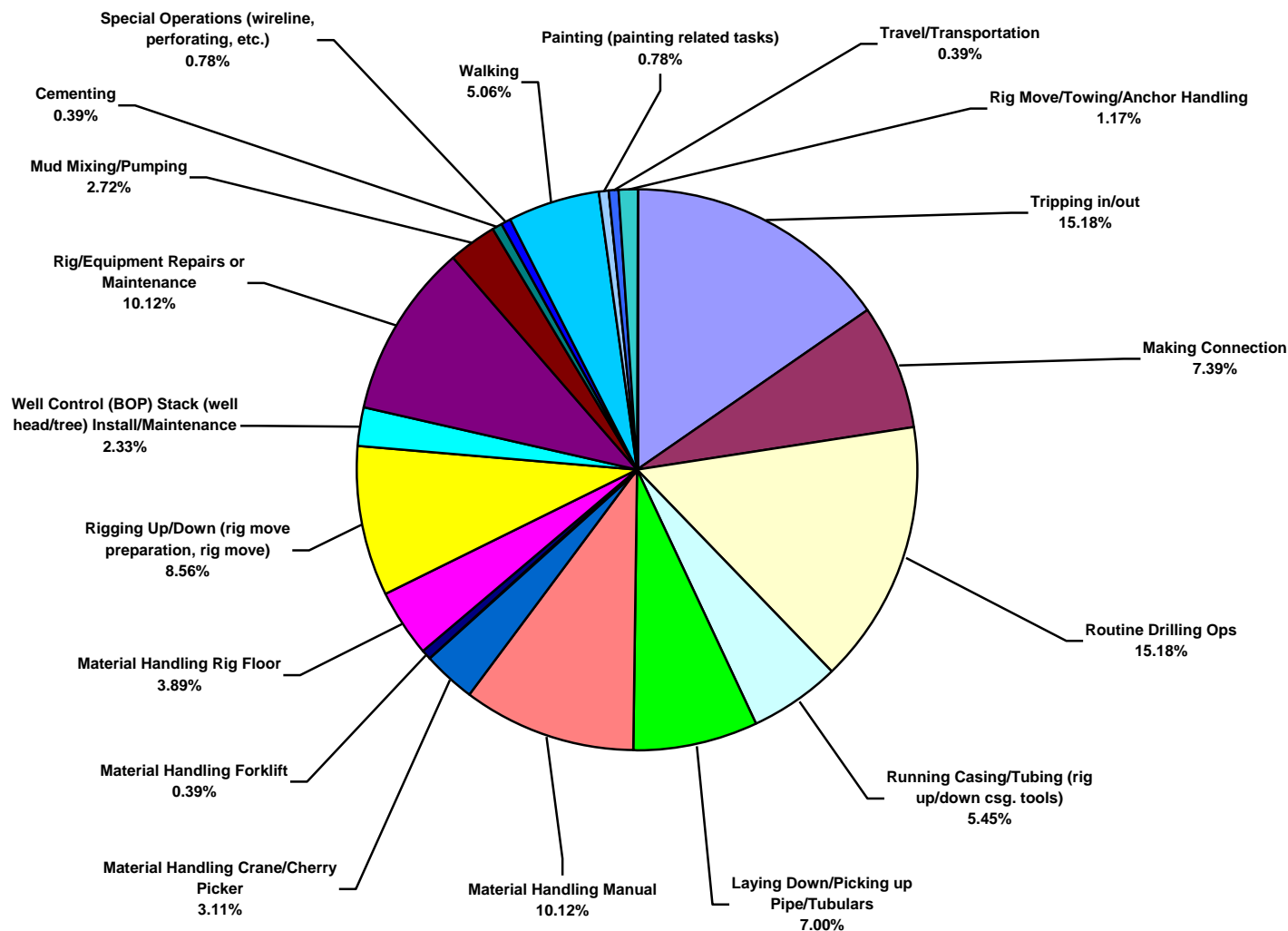
Africa Land Total Recordable Incidents by Equipment (Chart 10)
Based on 251 Incidents



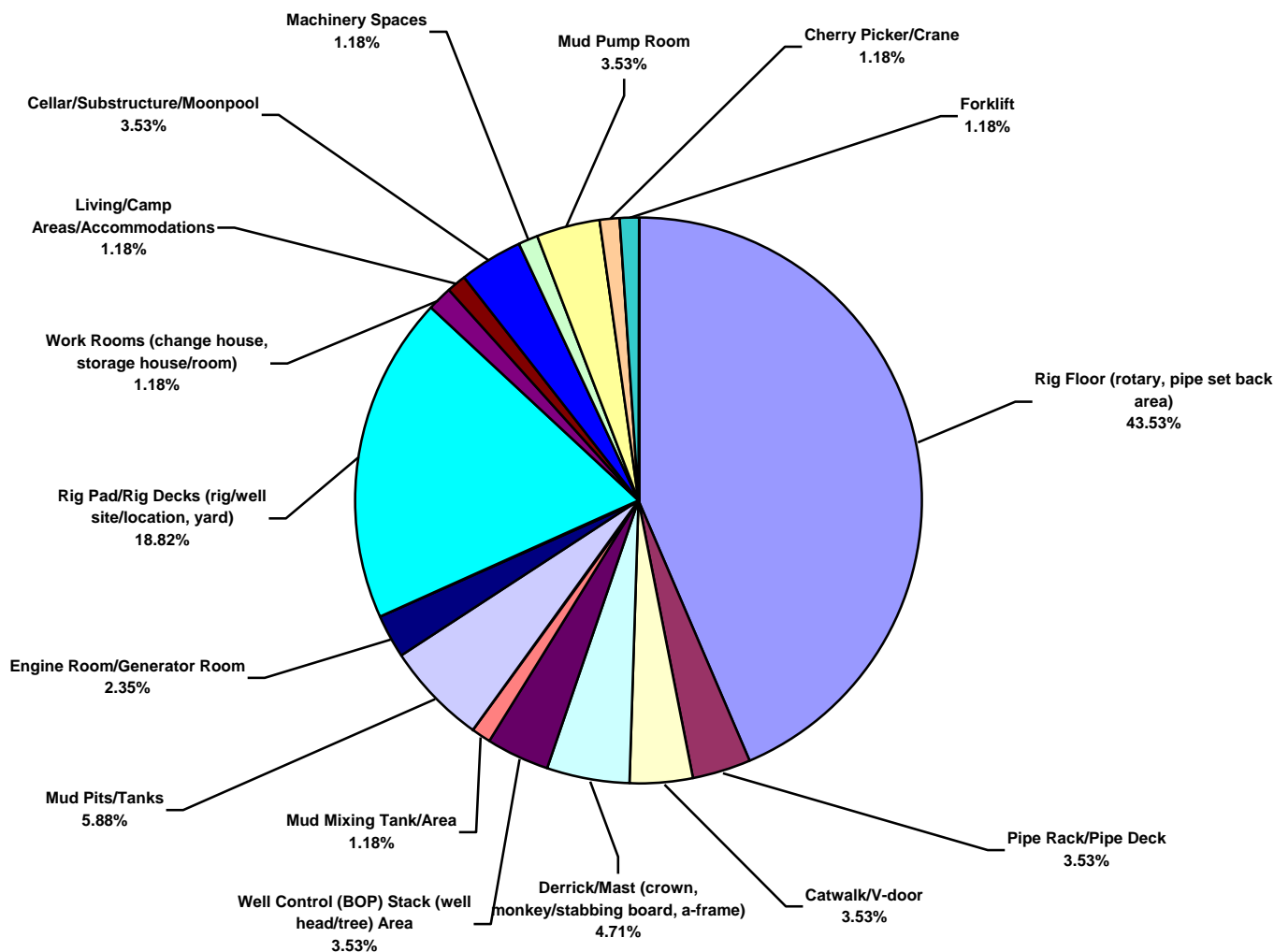
Africa Land Total Lost Time Incidents by Operation (Chart 11)
Based on 85 Incidents



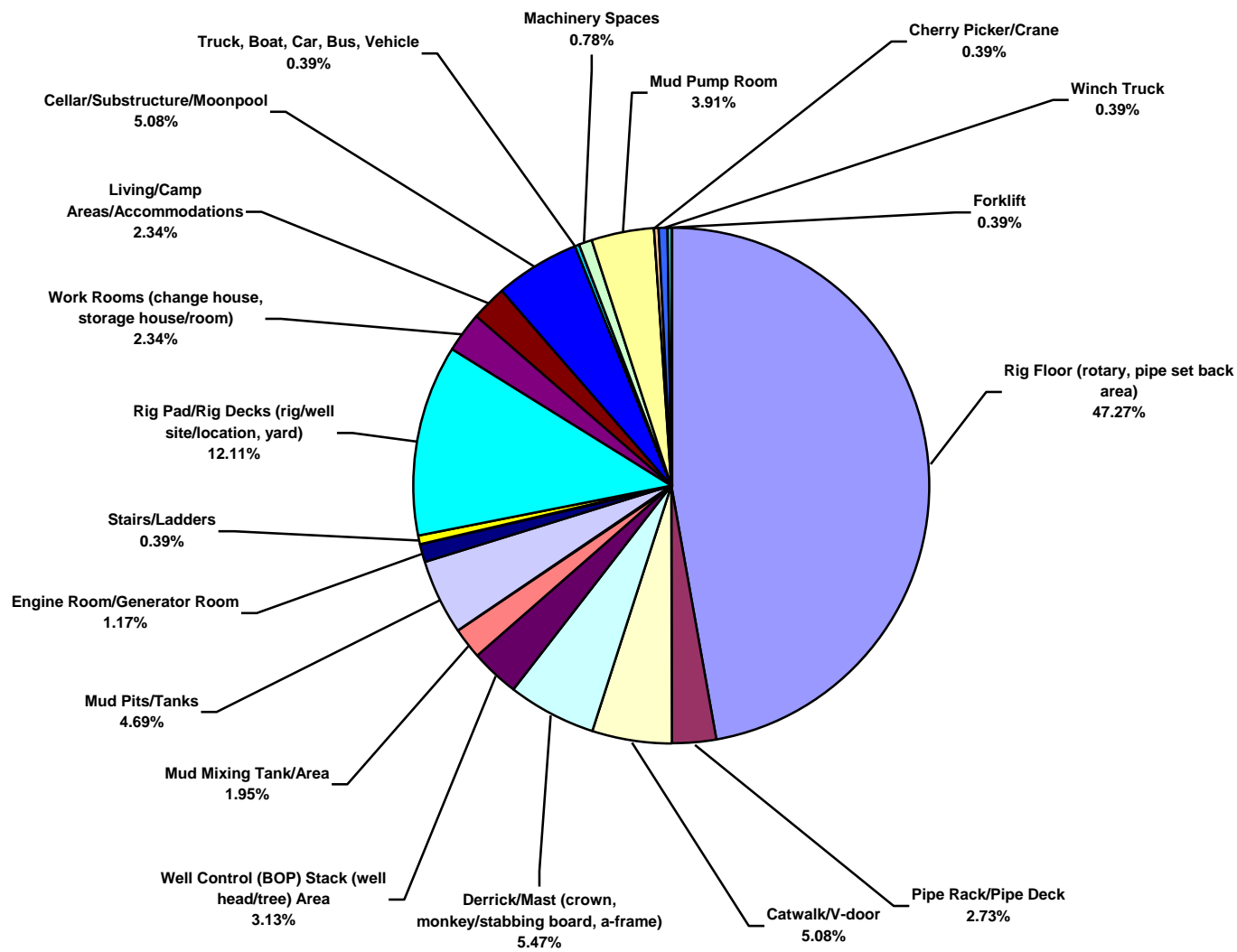
Africa Land Total Recordable Incidents by Operation (Chart 12)
Based on 257 Incidents



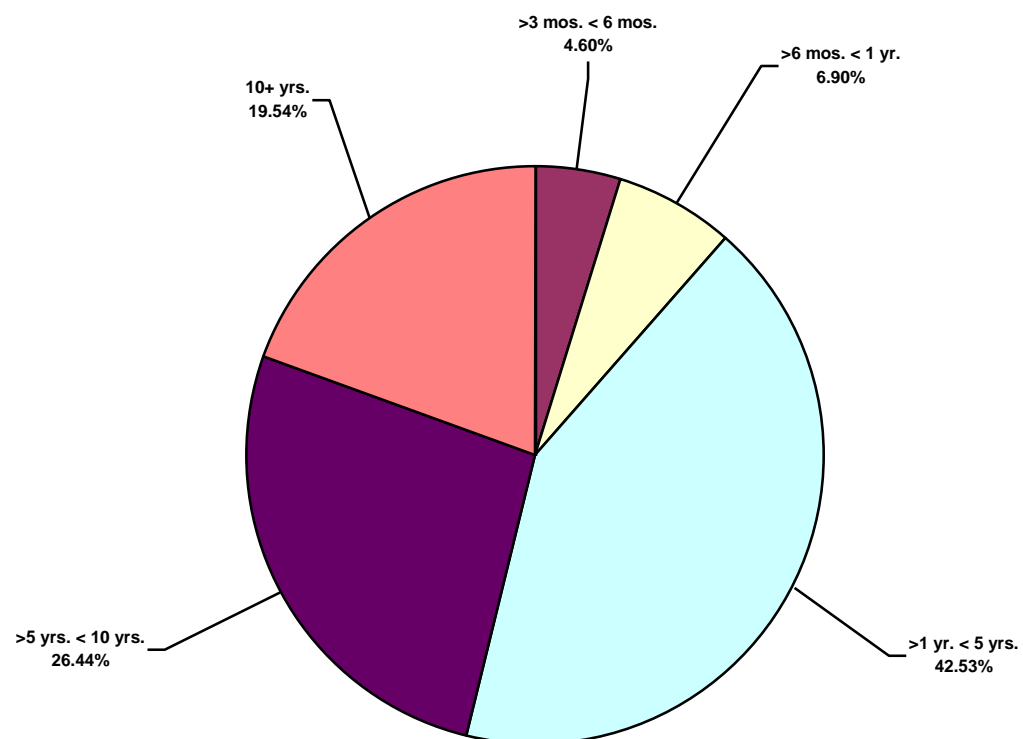
Africa Land Total Lost Time Incidents by Location (Chart 13)
Based on 85 Incidents



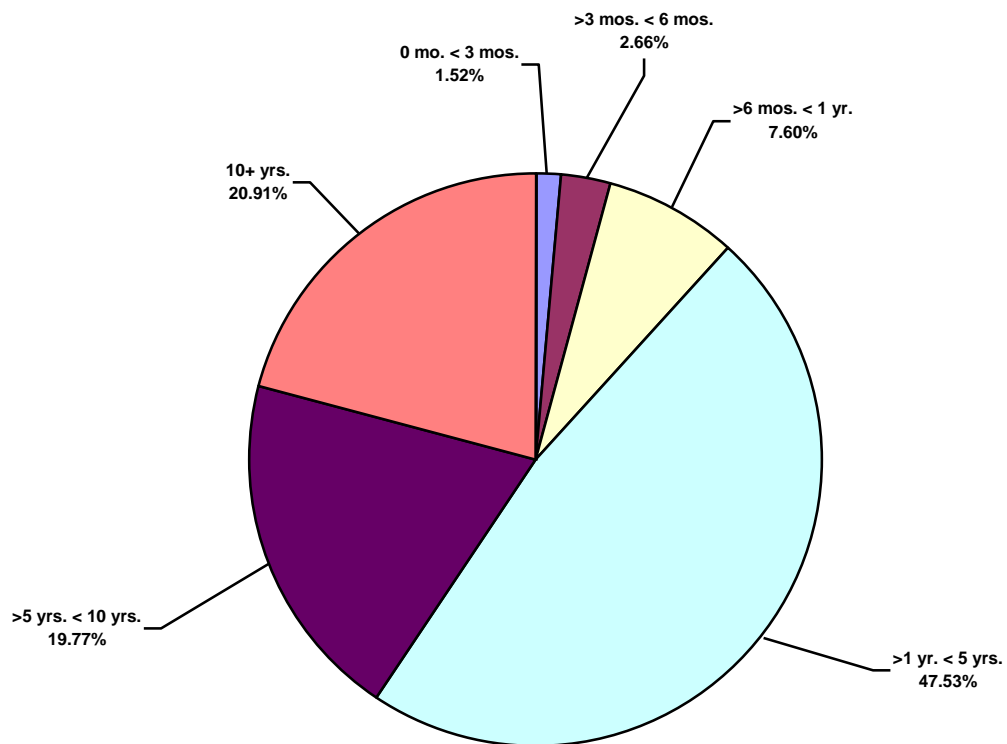
Africa Land Total Recordable Incidents by Location (Chart 14)
Based on 256 Incidents



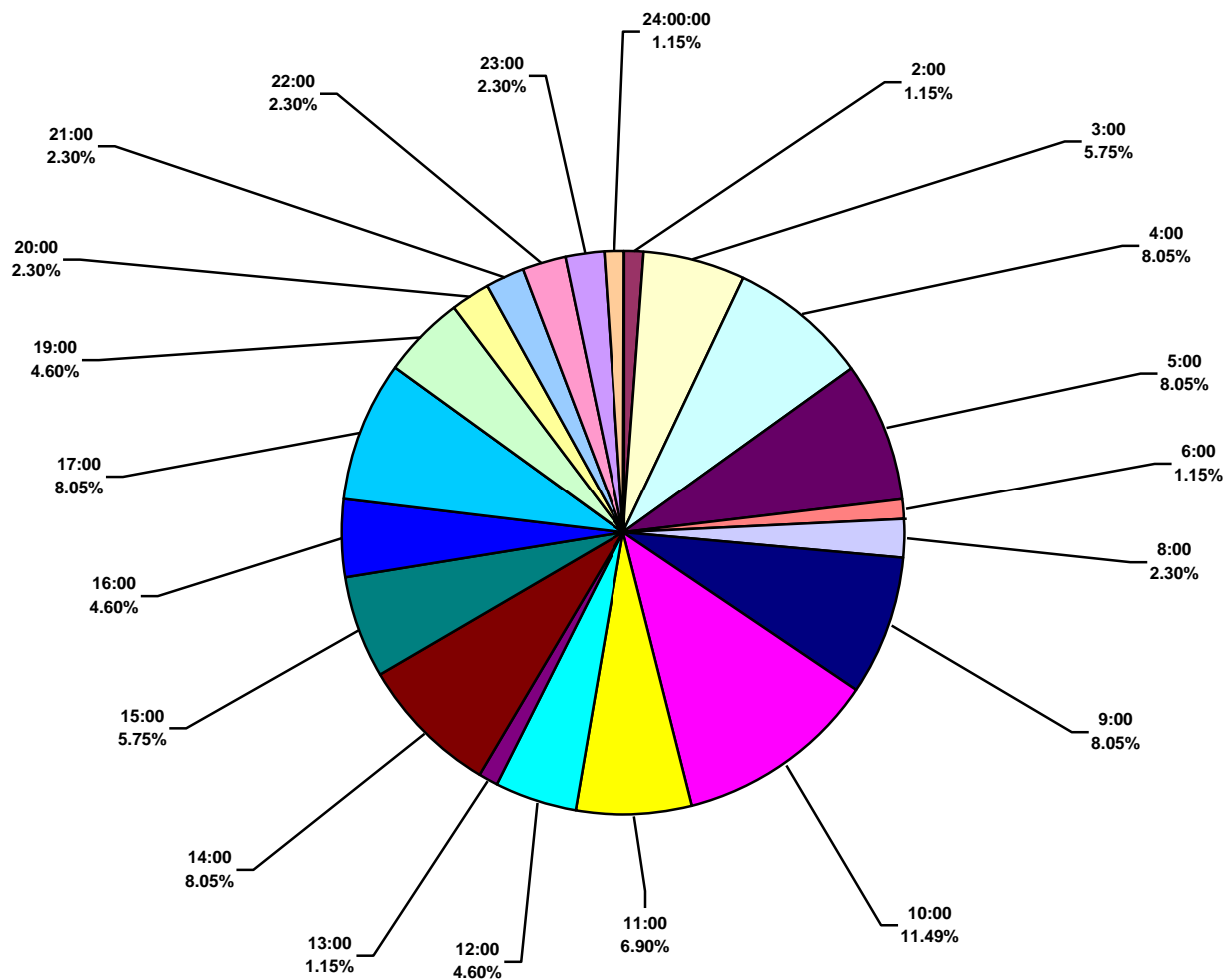
Africa Land Total Lost Time Incidents by Time in Service (Chart 15)
Based on 87 Incidents



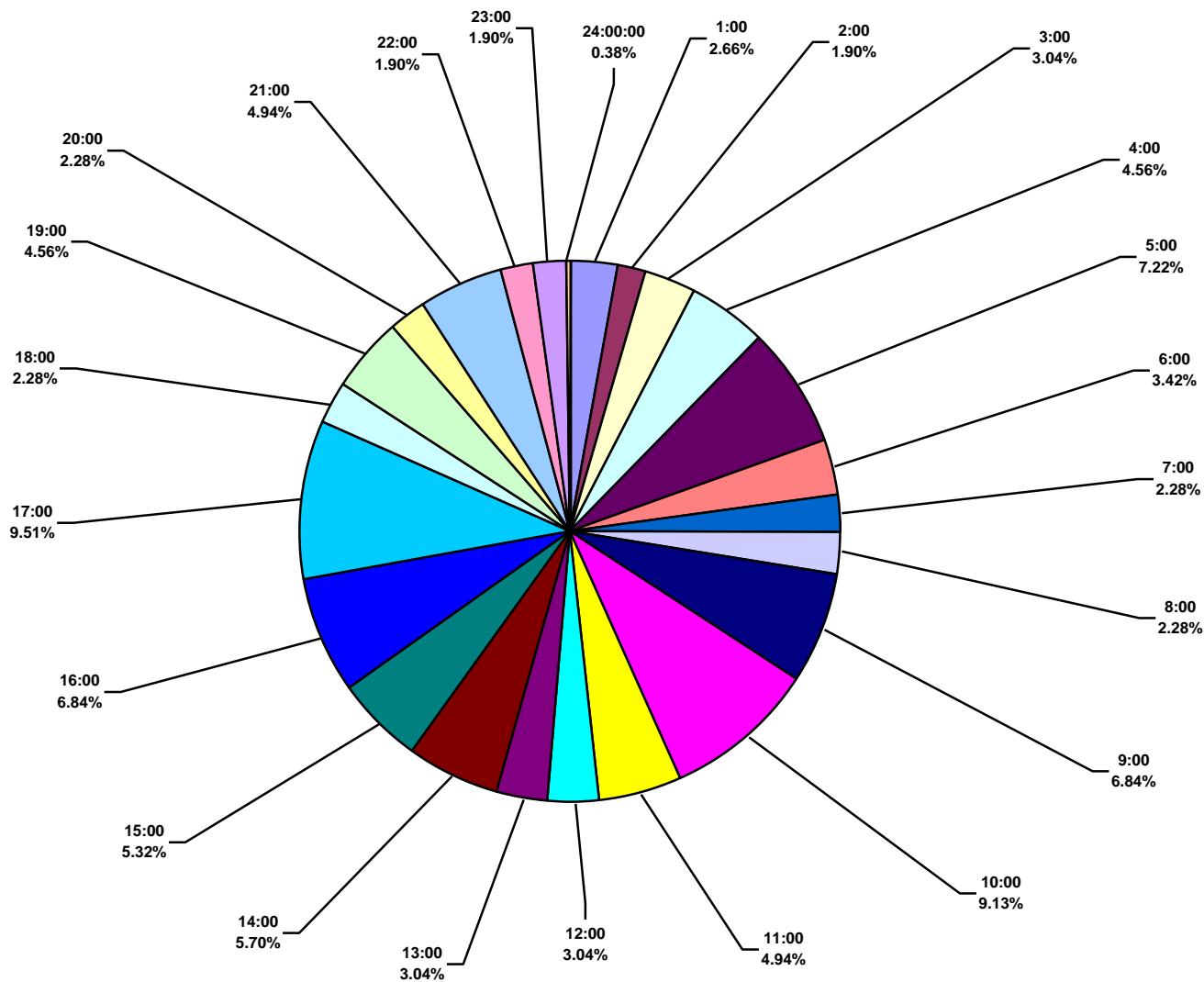
Africa Land Total Recordable Incidents by Time in Service (Chart 16)
Based on 263 Incidents



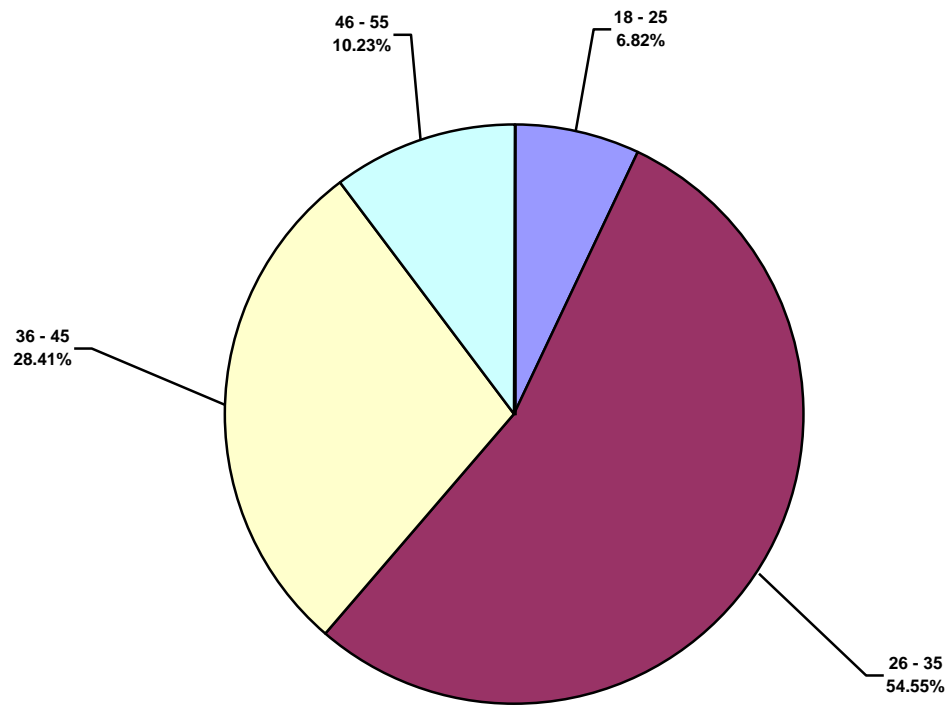
Africa Land Total Lost Time Incidents by Time of Day (Chart 17)
Based on 87 Incidents



Africa Land Total Recordable Incidents by Time of Day (Chart 18)
Based on 263 Incidents



Africa Land Total Lost Time Incidents by Age (Chart 19)
Based on 88 Incidents



Africa Land Total Recordable Incidents by Age (Chart 20)
Based on 263 Incidents

