



**IADC**

**IADC  
ISP PROGRAM**

**2018**



**Summary of Occupational  
Incidents  
(South America Water Totals)**

*Issued 15 June 2019*

# Table of Contents

(Table of Contents is Hyperlinked, Just click on Topic & go)

IADC 2018 SOUTH AMERICA WATER TOTALS (TABLE 1).....	1
<i>South America Water Total Incidence Rates vs Man-hours (Figure 1).....</i>	<i>1</i>
IADC 2018 SOUTH AMERICA WATER CHARTS .....	2
<i>South America Water Total Lost Time Incidents by Month (Chart 1).....</i>	<i>2</i>
<i>South America Water Total Recordable Incidents by Month (Chart 2) .....</i>	<i>3</i>
<i>South America Water Total Lost Time Incidents by Occupation (Chart 3).....</i>	<i>4</i>
<i>South America Water Total Recordable Incidents by Occupation (Chart 4).....</i>	<i>5</i>
<i>South America Water Total Lost Time Incidents by Body Part (Chart 5).....</i>	<i>6</i>
<i>South America Water Total Recordable Incidents by Body Part (Chart 6) .....</i>	<i>7</i>
<i>South America Water Total Lost Time Incidents by Incident Type (Chart 7) .....</i>	<i>8</i>
<i>South America Water Total Recordable Incidents by Incident Type (Chart 8).....</i>	<i>9</i>
<i>South America Water Total Lost Time Incidents by Equipment (Chart 9).....</i>	<i>10</i>
<i>South America Water Total Recordable Incidents by Equipment (Chart 10) .....</i>	<i>11</i>
<i>South America Water Total Lost Time Incidents by Operation (Chart 11).....</i>	<i>12</i>
<i>South America Water Total Recordable Incidents by Operation (Chart 12) .....</i>	<i>13</i>
<i>South America Water Total Lost Time Incidents by Location (Chart 13).....</i>	<i>14</i>
<i>South America Water Total Recordable Incidents by Location (Chart 14).....</i>	<i>15</i>
<i>South America Water Total Lost Time Incidents by Time in Service (Chart 15) .....</i>	<i>16</i>
<i>South America Water Total Recordable Incidents by Time in Service (Chart 16).....</i>	<i>17</i>
<i>South America Water Total Lost Time Incidents by Time of Day (Chart 17).....</i>	<i>18</i>
<i>South America Water Total Recordable Incidents by Time of Day (Chart 18).....</i>	<i>19</i>
<i>South America Water Total Lost Time Incidents by Age (Chart 19).....</i>	<i>20</i>
<i>South America Water Total Recordable Incidents by Age (Chart 20).....</i>	<i>21</i>

# IADC 2018 South America Water Totals (Table 1)

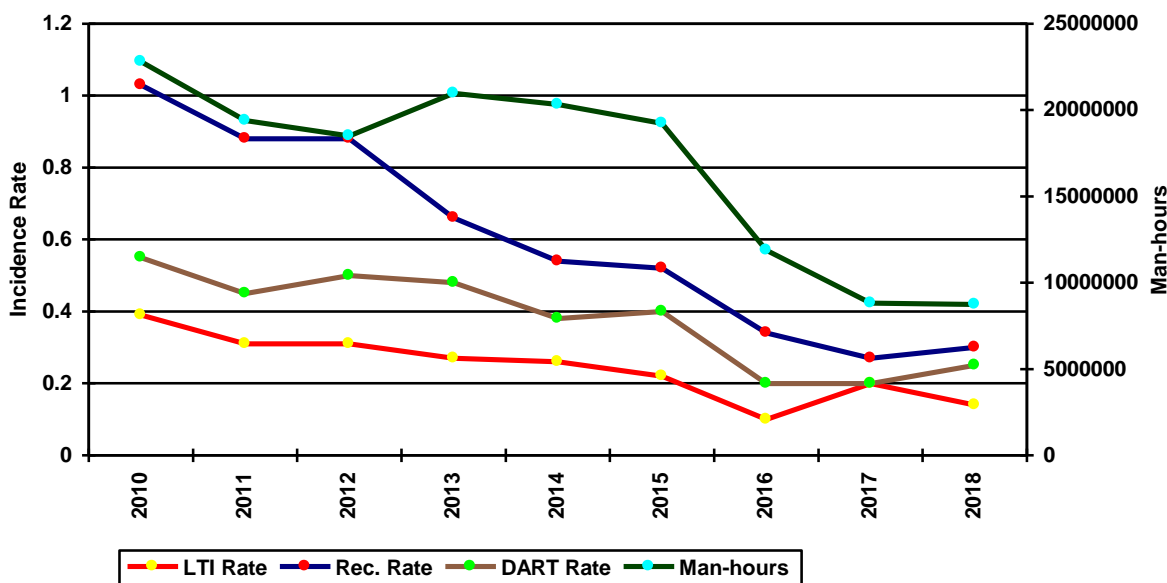
	<u>Total</u>
Total Man-hours	8,744,970
Total Medical Treatment Incidents	2
Total Restricted Work Incidents	5
Total Lost Time Incidents	6
Total Fatalities	0
Total Recordables	13
MTO Incidence Rate	0.05
RWC Incidence Rate	0.11
LTI Incidence Rate	0.14
LTI Frequency Rate	0.69
DART Incidence Rate	0.25
DART Frequency Rate	1.26
Recordable Incidence Rate	0.30
Recordable Frequency Rate	1.49

Companies Reporting: Water – 12

Medical Treatment Incidence Rate = MTOs X 200,000  
 Restricted Work Incidence Rate = RWCs X 200,000  
 Lost Time Incidence Rate = LTIs + FTLs X 200,000  
 DART Incidence Rate = LTIs + RWC X 200,000  
 Recordable Incidence Rate = RCRD X 200,000

Lost Time Frequency Rate = LTIs +FTLs X 1,000,000  
 DART Frequency Rate = LTIs + RWC X 1,000,000  
 Recordable Frequency Rate = RCRD X 1,000,000

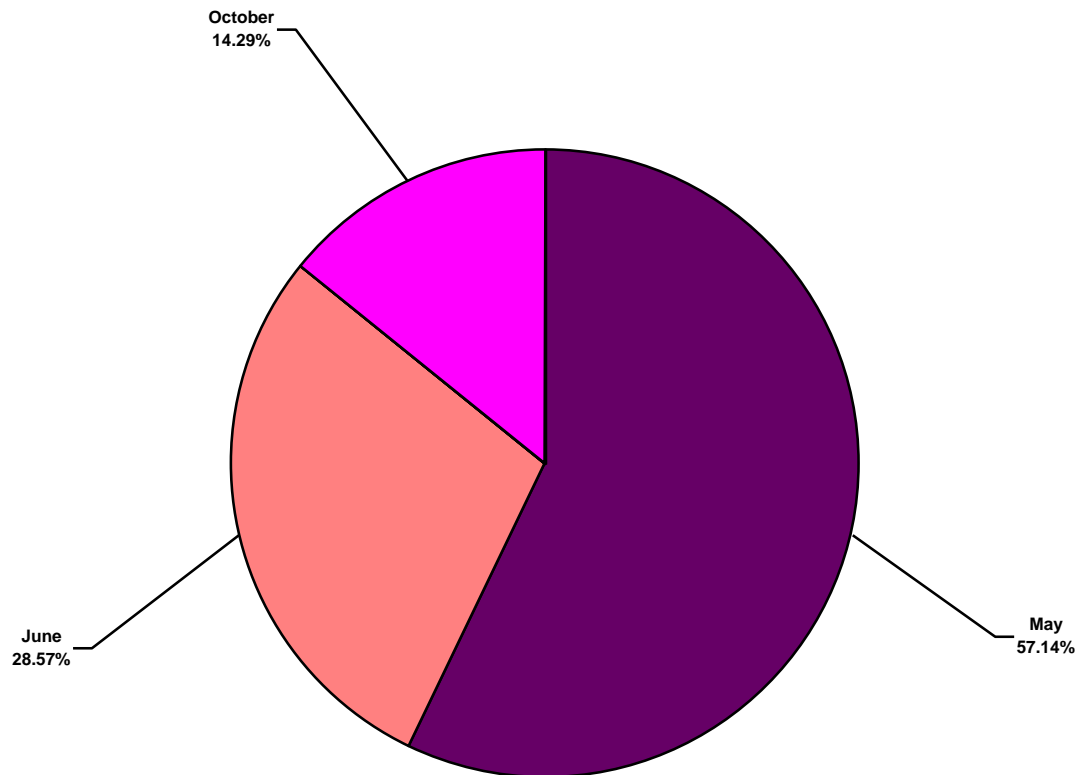
South America Water Total Incidence Rates vs Man-hours (Figure 1)



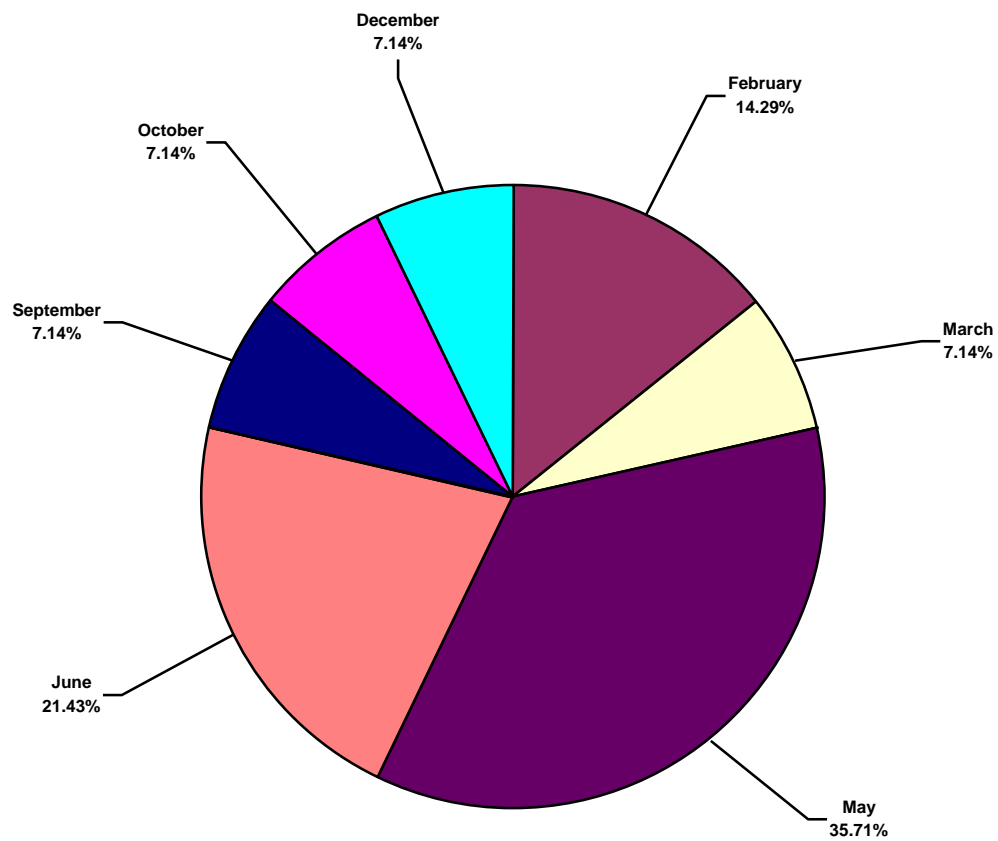
# IADC 2018 South America Water Charts

## South America Water Total Lost Time Incidents by Month (Chart 1)

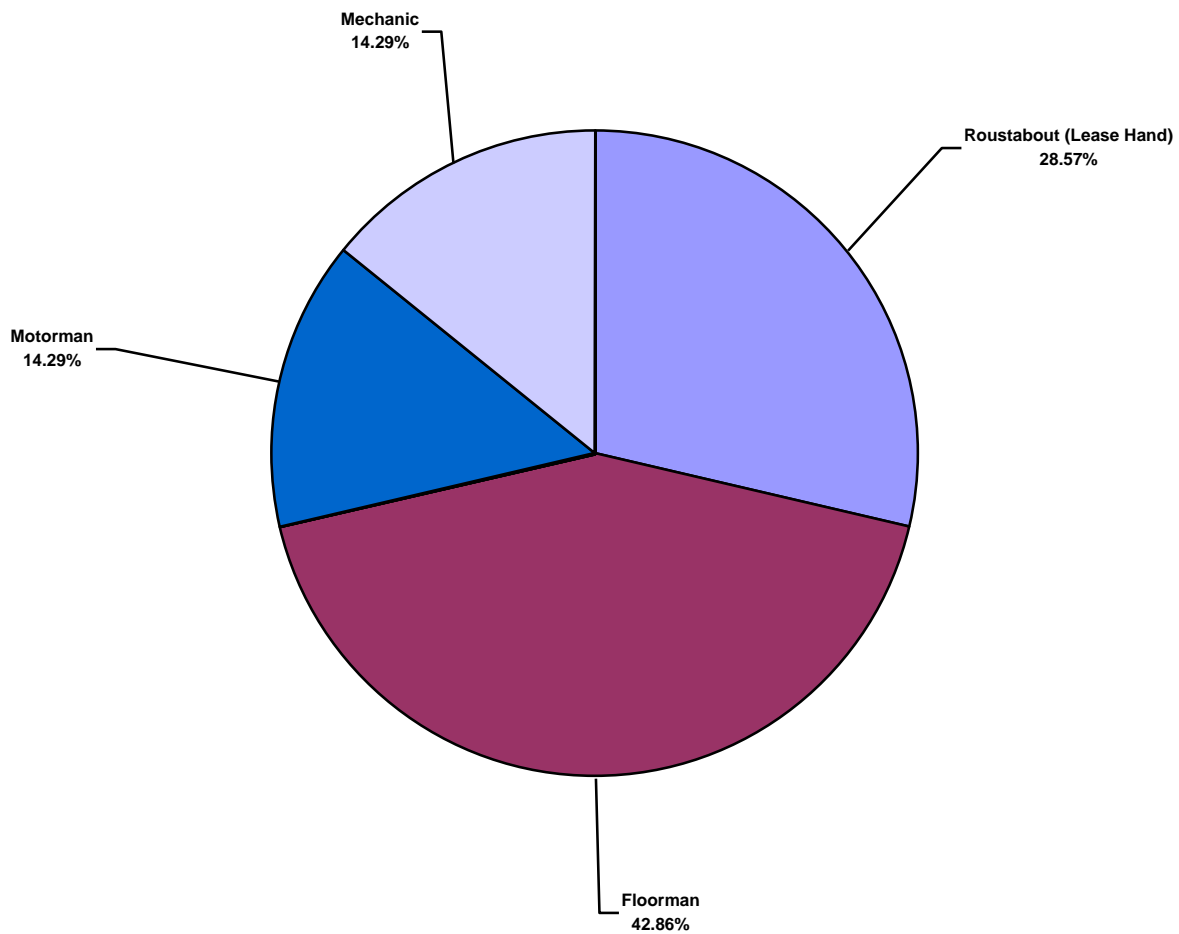
Based on 7 Incidents



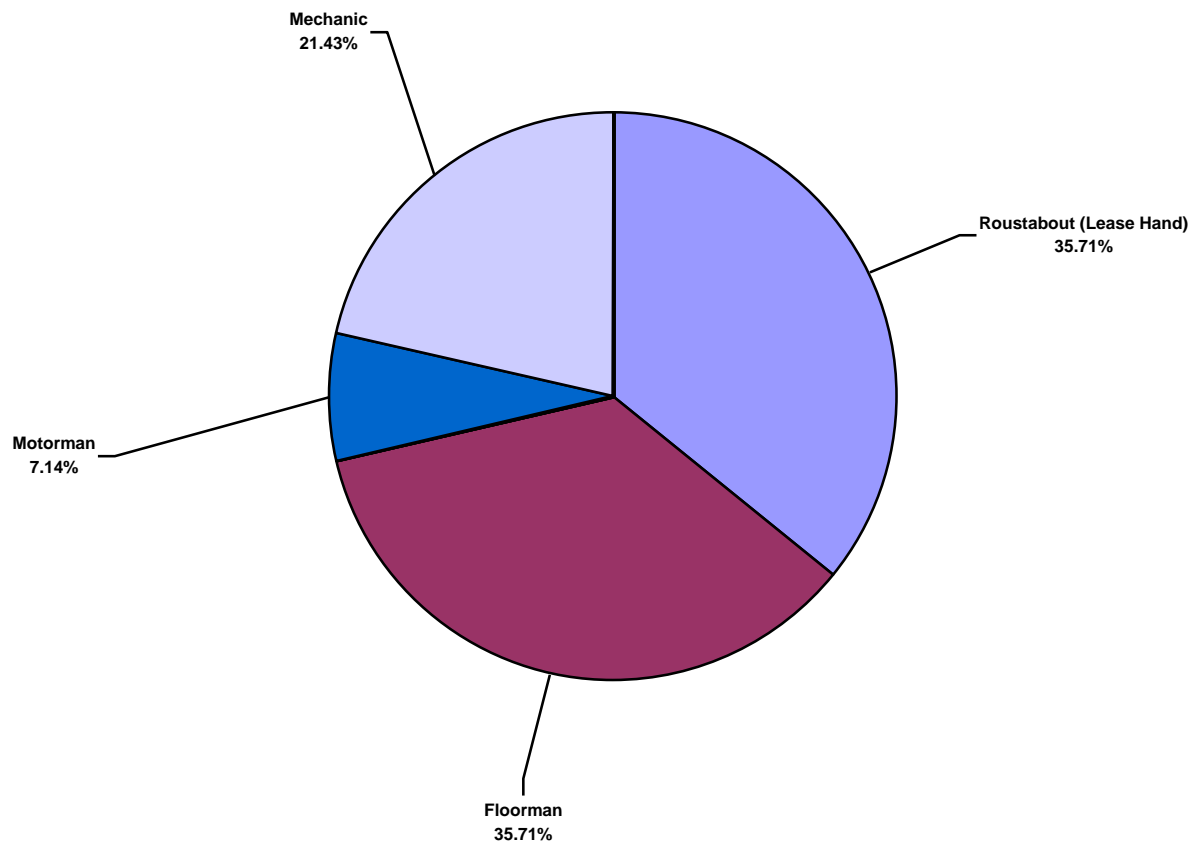
**South America Water Total Recordable Incidents by Month (Chart 2)**  
Based on 14 Incidents



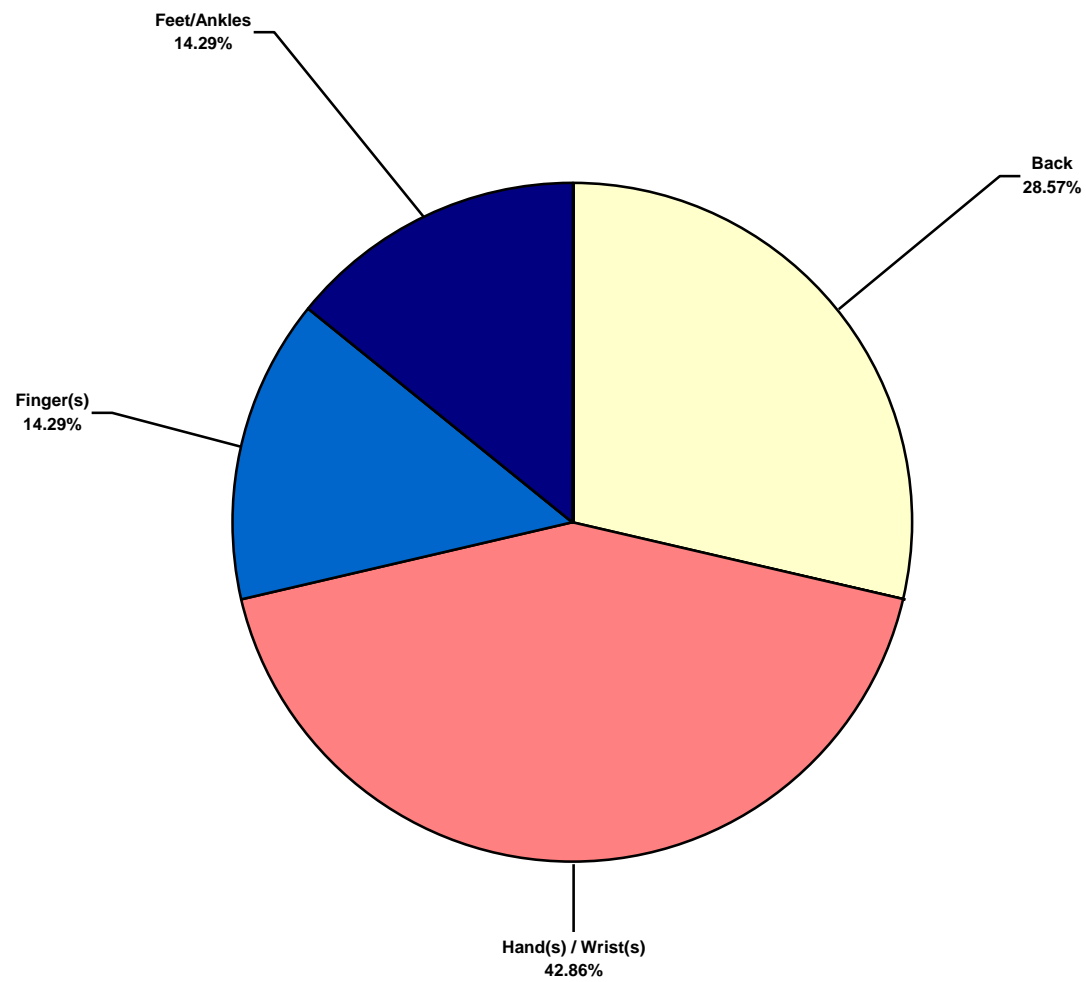
**South America Water Total Lost Time Incidents by Occupation (Chart 3)**  
Based on 7 Incidents



South America Water Total Recordable Incidents by Occupation (Chart 4)  
Based on 14 Incidents

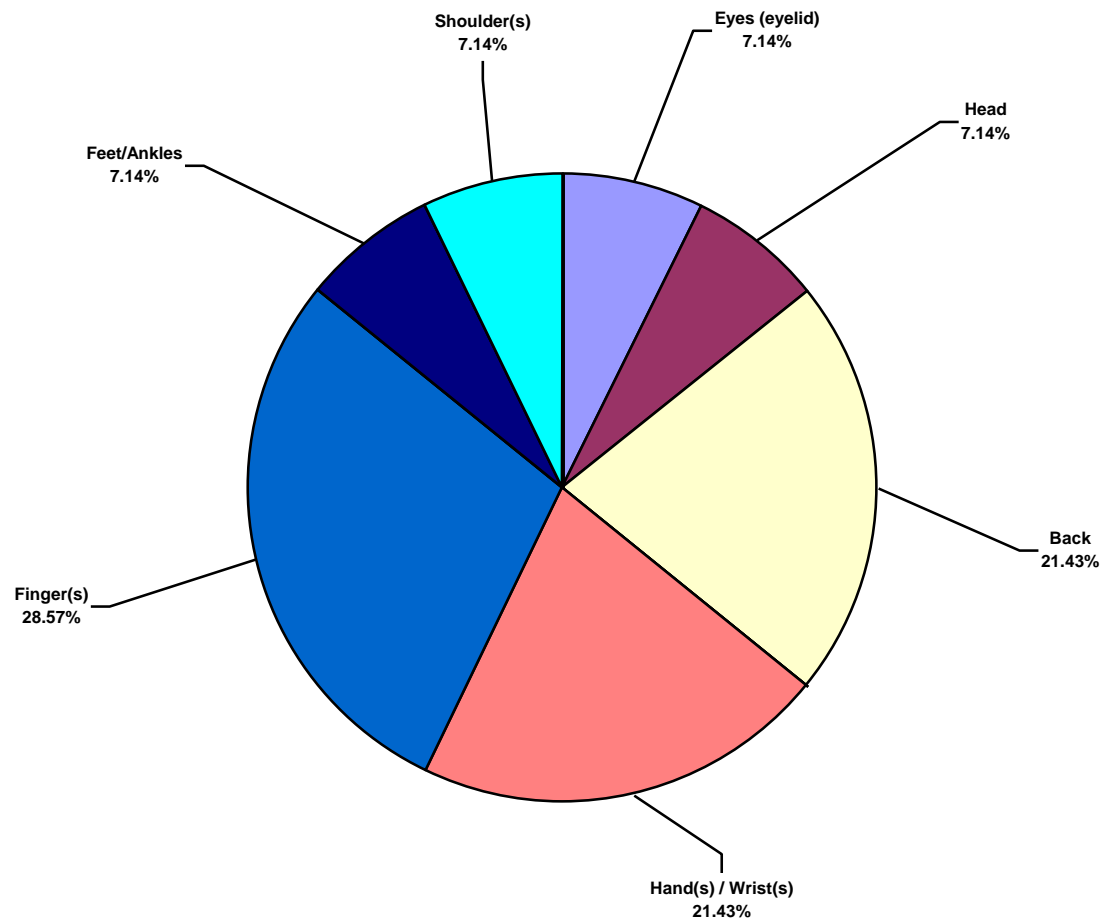


South America Water Total Lost Time Incidents by Body Part (Chart 5)  
Based on 7 Incidents

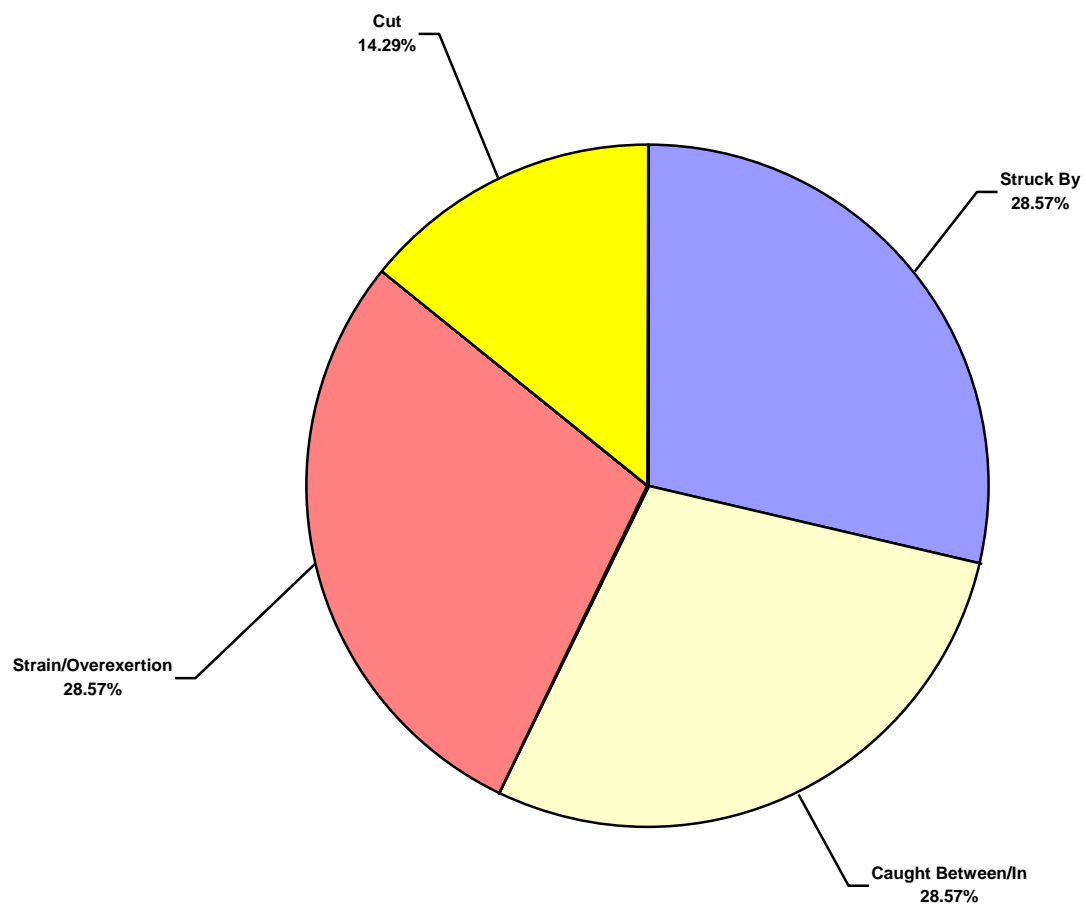




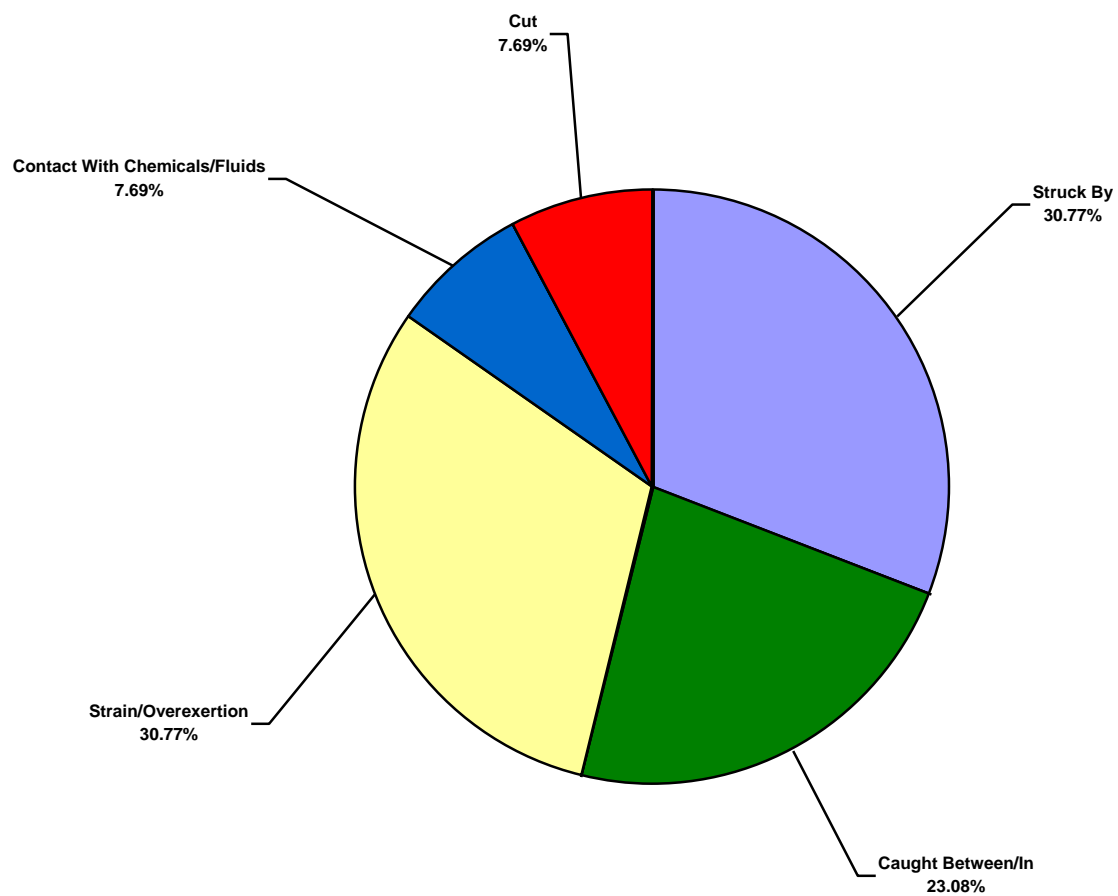
South America Water Total Recordable Incidents by Body Part (Chart 6)  
Based on 14 Incidents



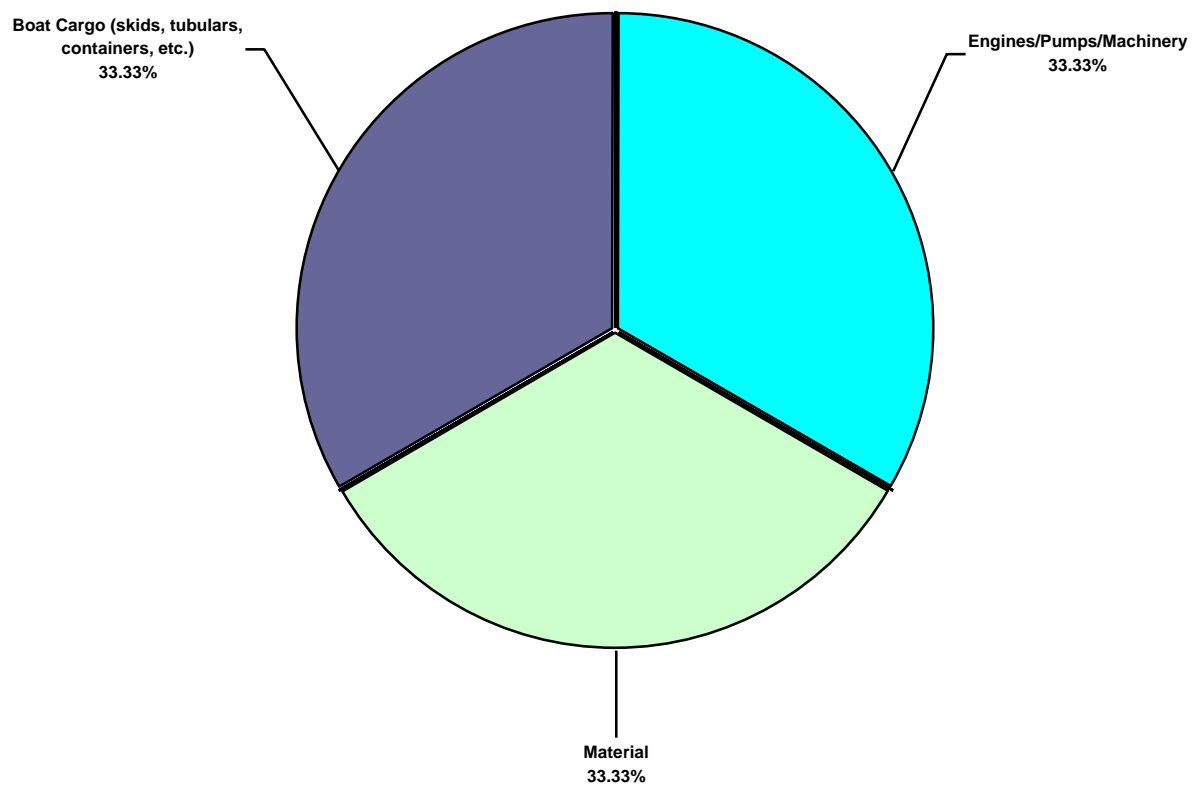
**South America Water Total Lost Time Incidents by Incident Type (Chart 7)**  
Based on 7 Incidents



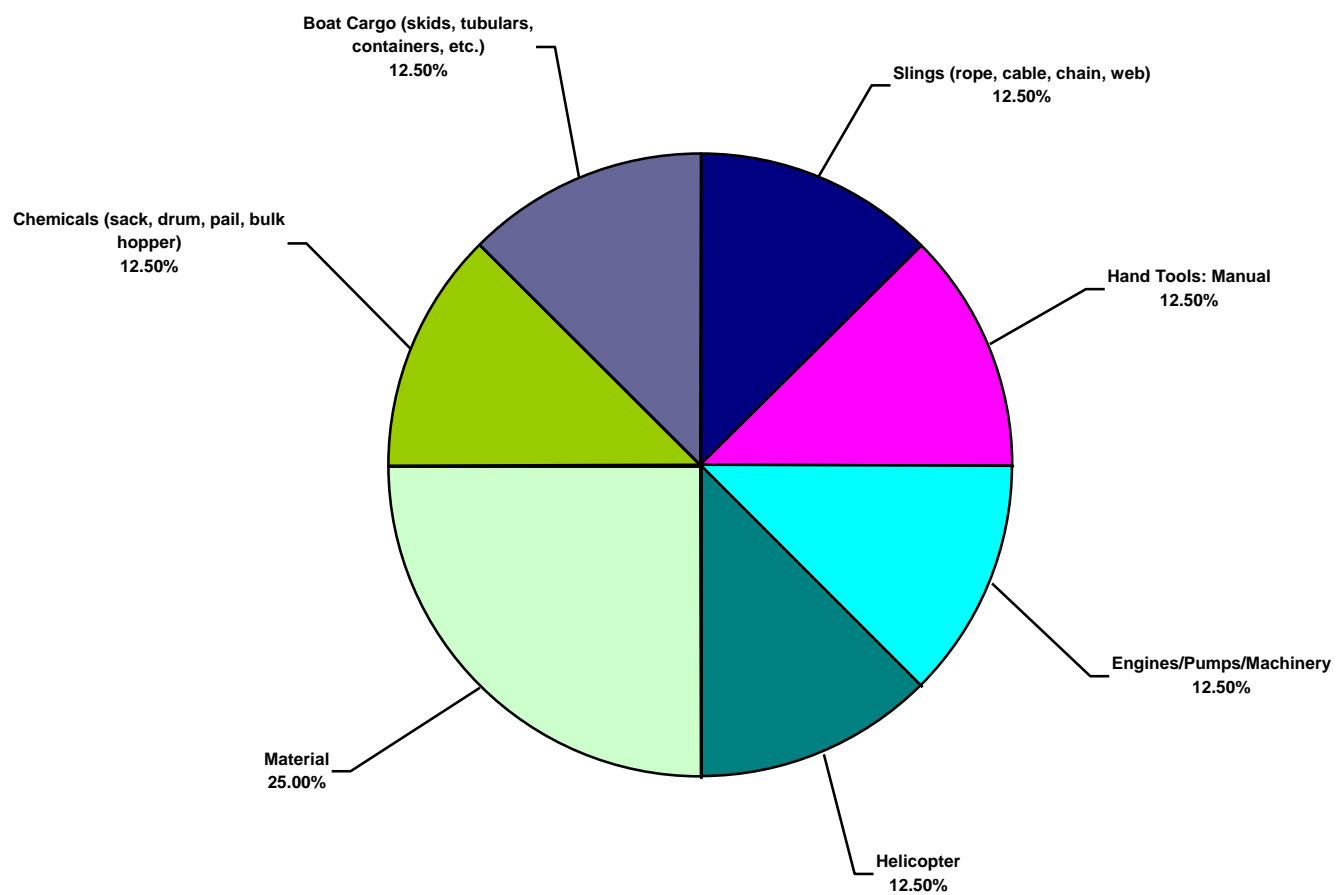
South America Water Total Recordable Incidents by Incident Type (Chart 8)  
Based on 13 Incidents



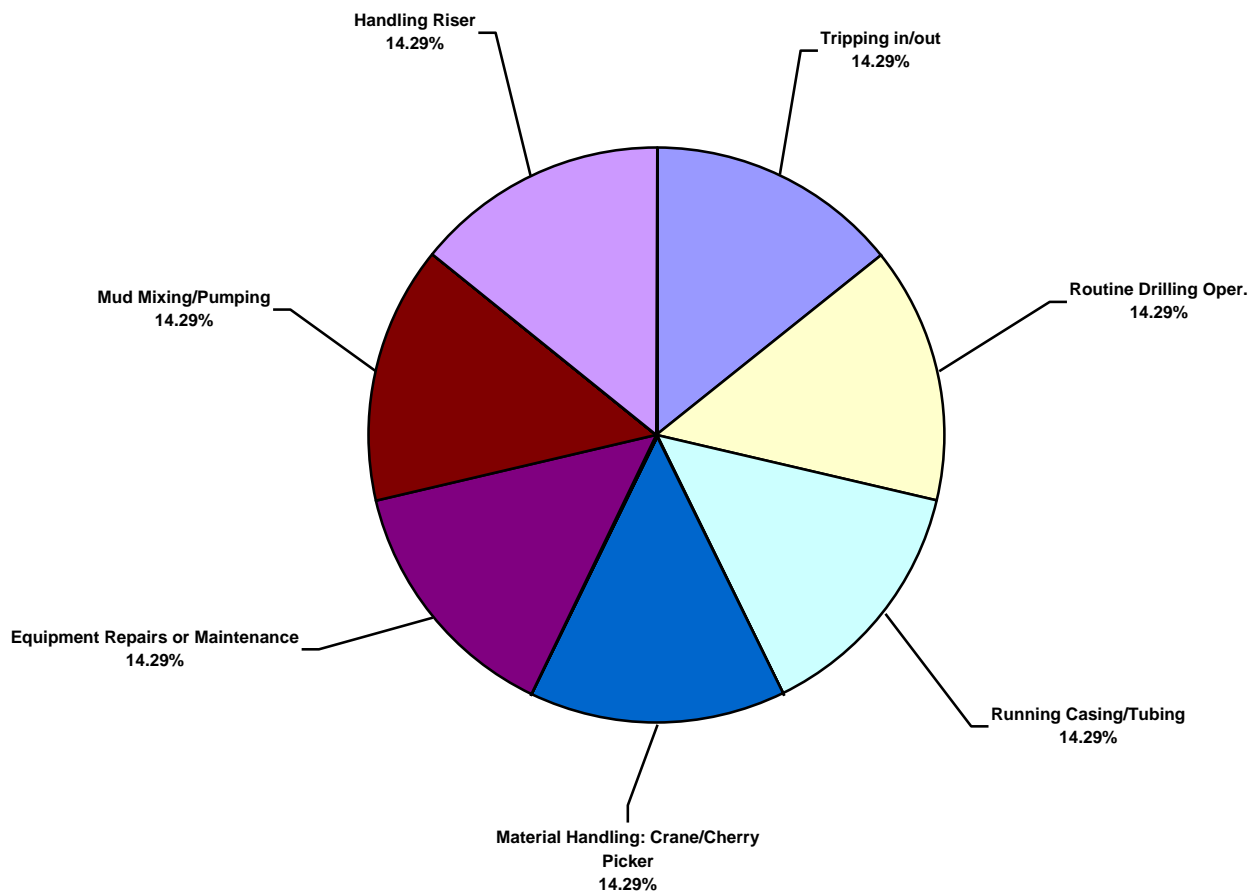
**South America Water Total Lost Time Incidents by Equipment (Chart 9)**  
Based on 3 Incidents



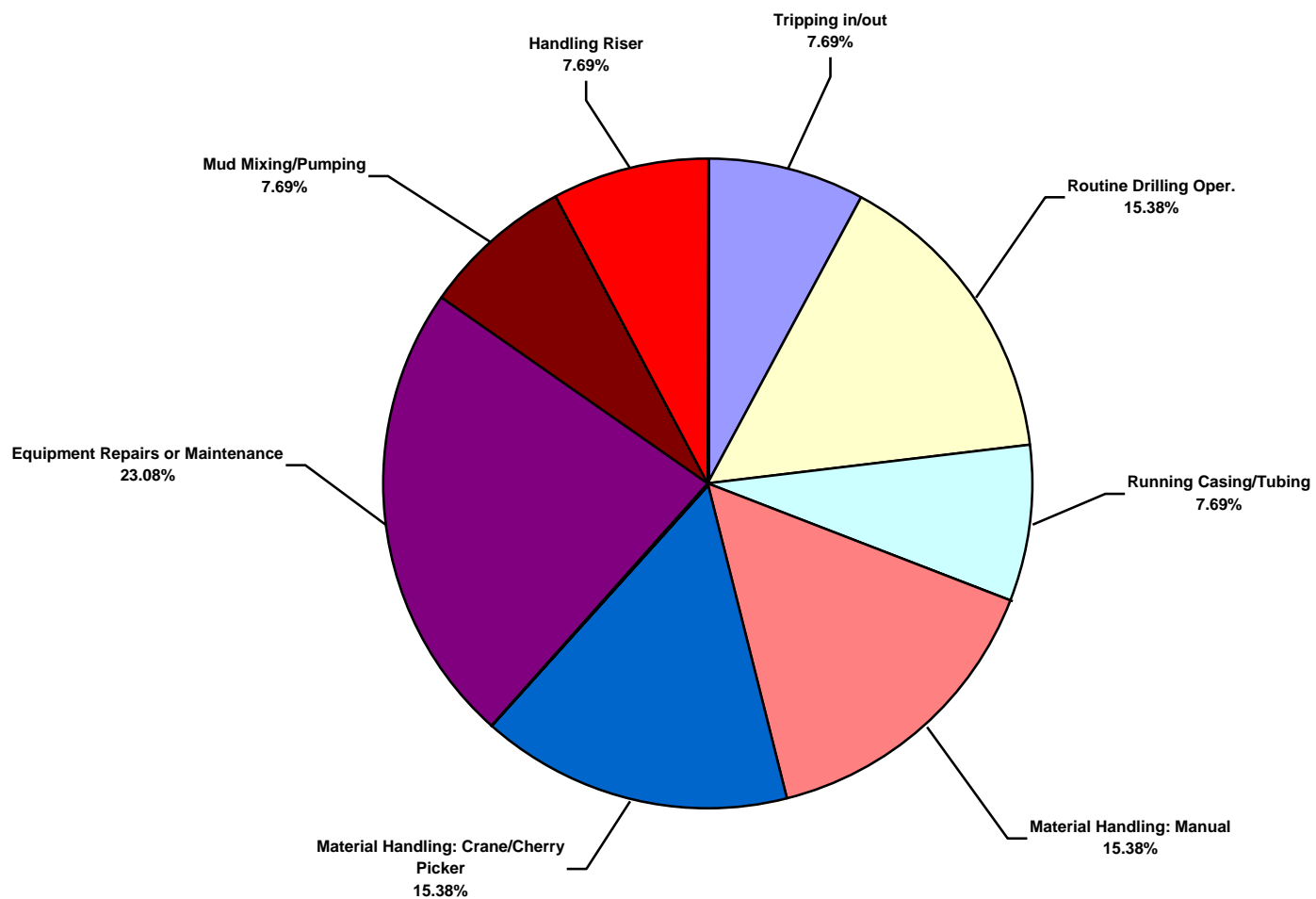
**South America Water Total Recordable Incidents by Equipment (Chart 10)**  
Based on 8 Incidents



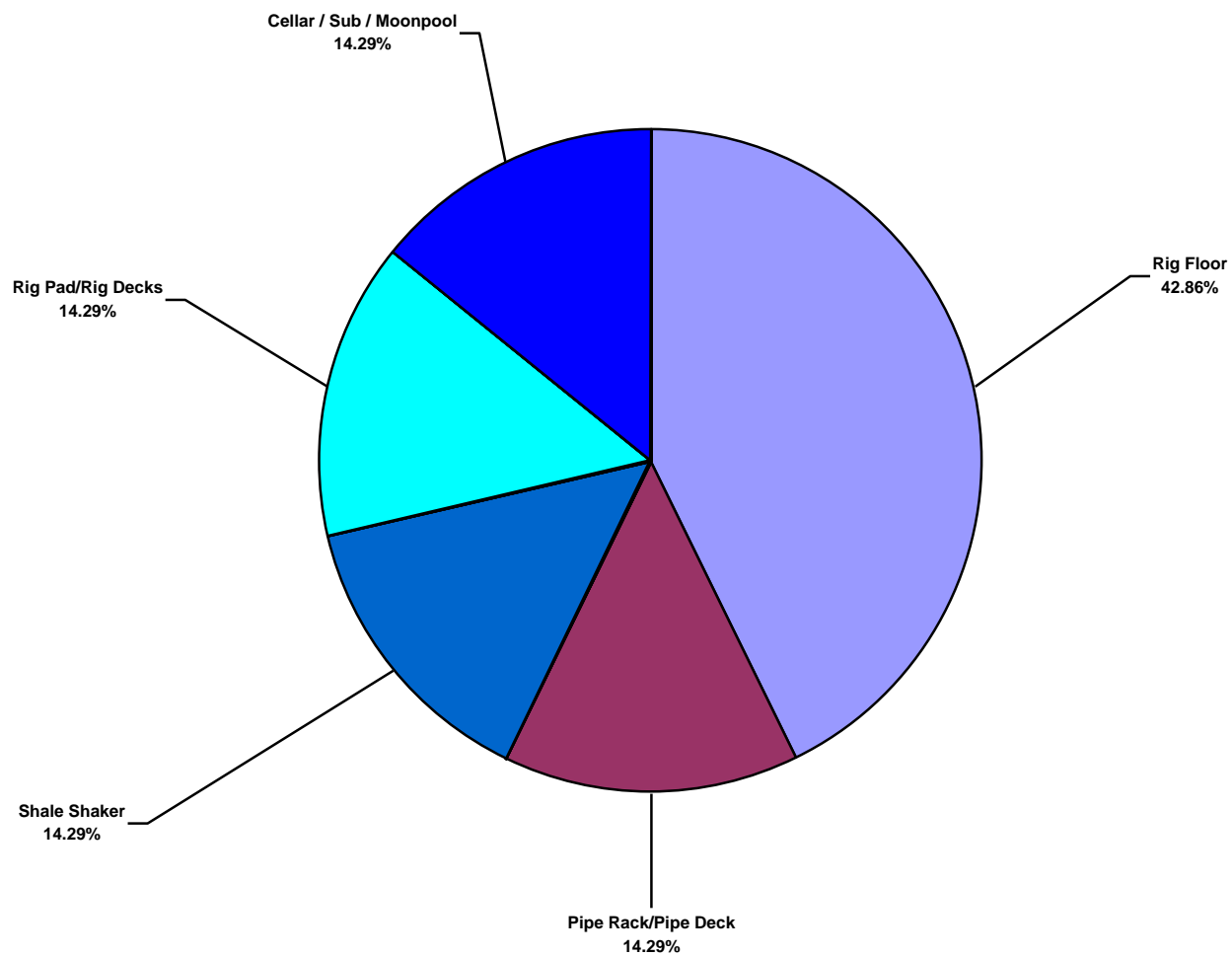
South America Water Total Lost Time Incidents by Operation (Chart 11)  
Based on 7 Incidents



**South America Water Total Recordable Incidents by Operation (Chart 12)**  
Based on 13 Incidents

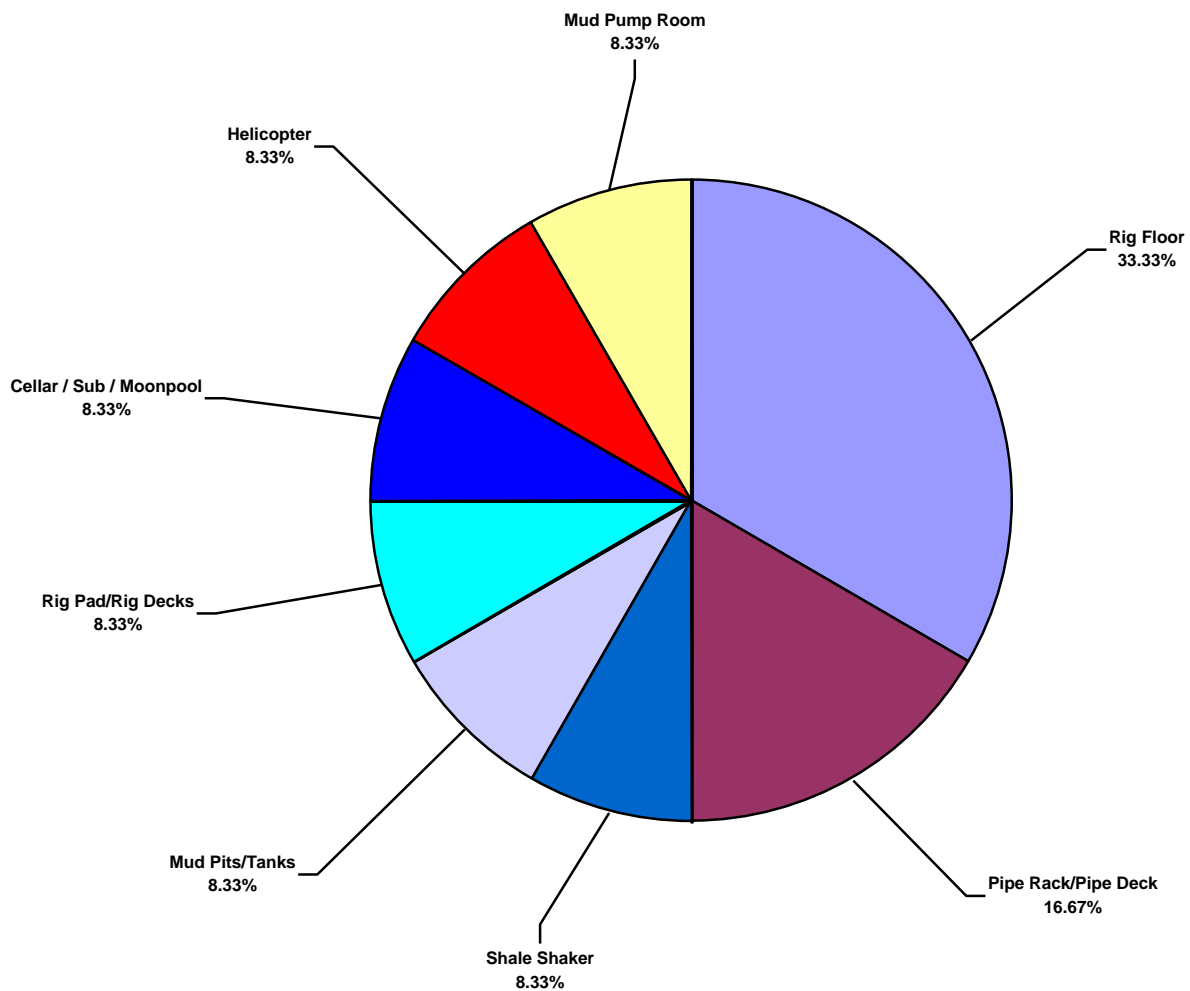


**South America Water Total Lost Time Incidents by Location (Chart 13)**  
Based on 7 Incidents

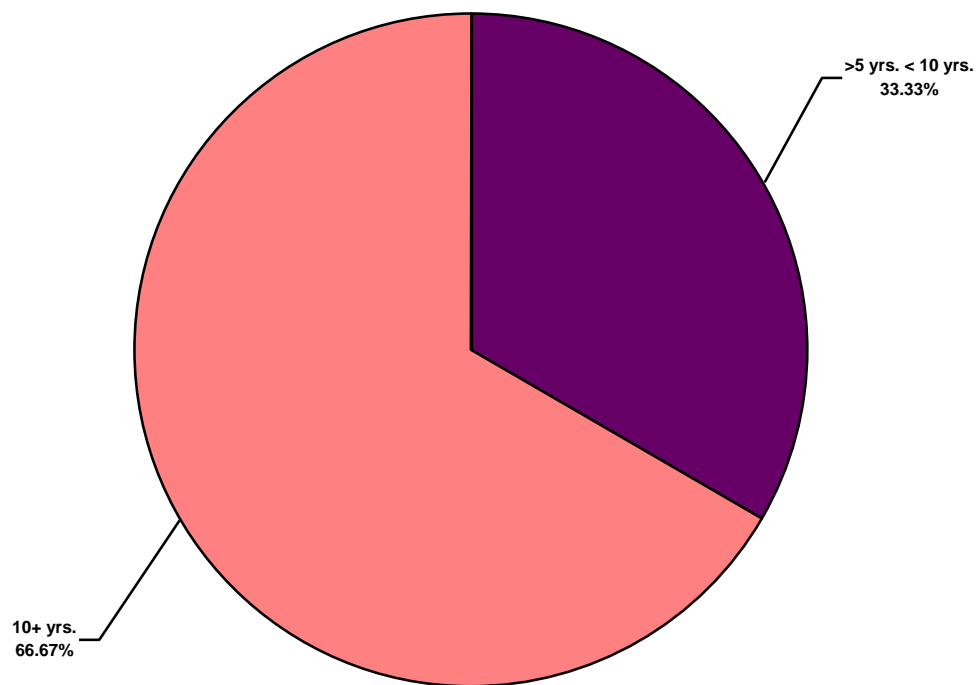




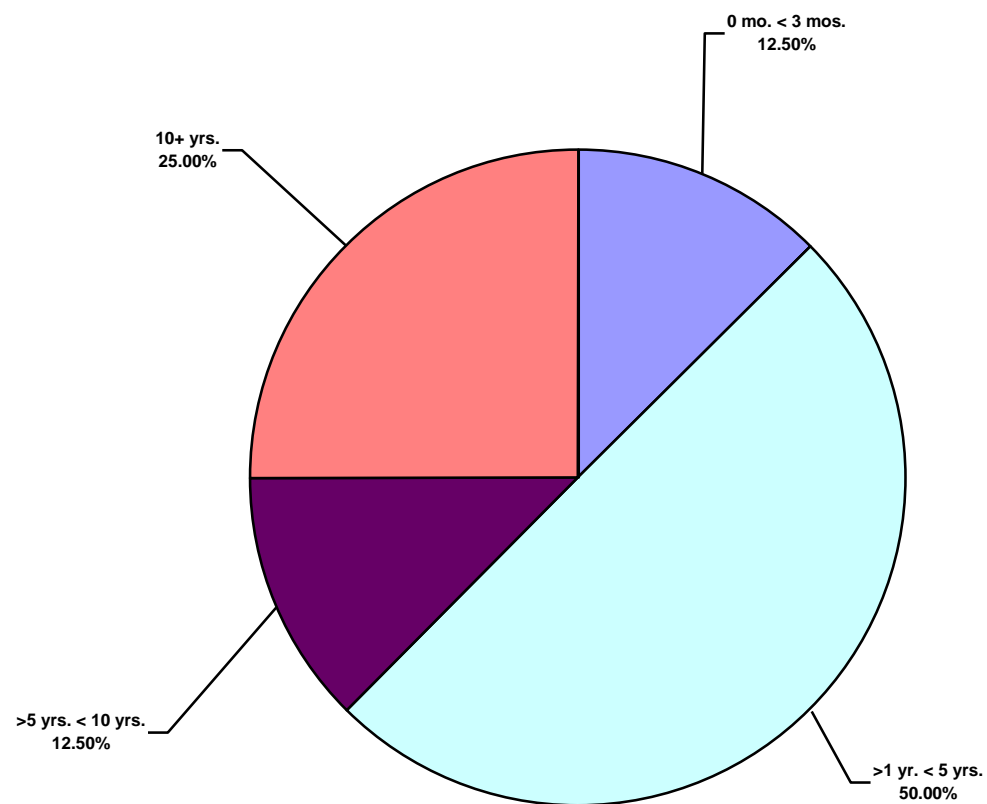
South America Water Total Recordable Incidents by Location (Chart 14)  
Based on 12 Incidents



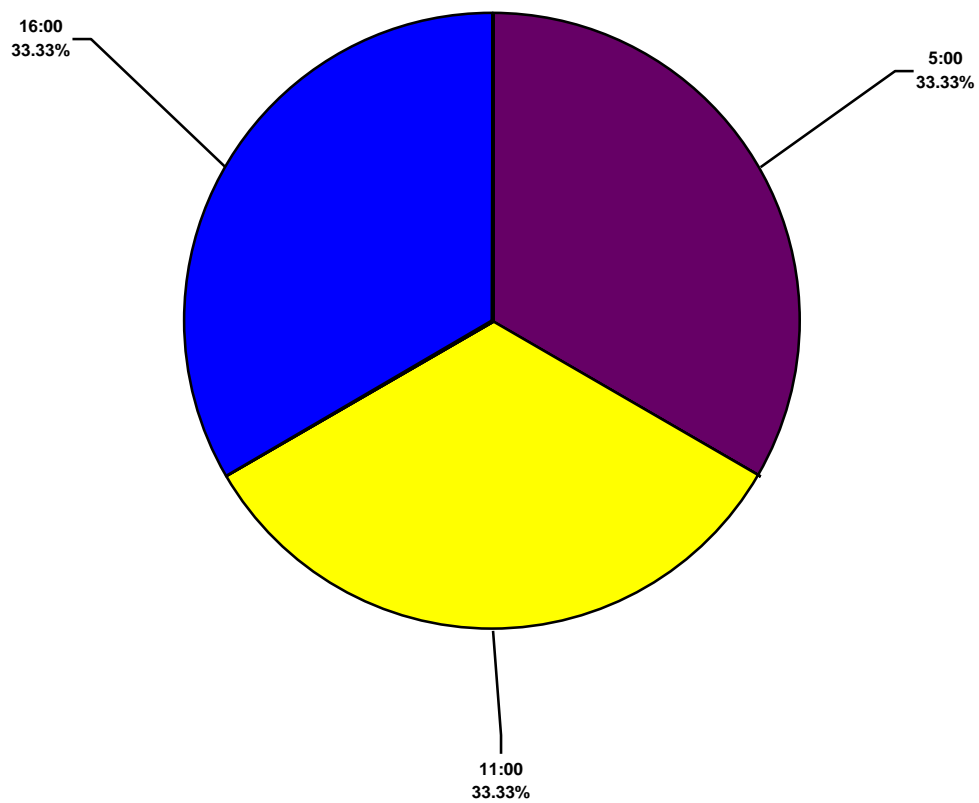
**South America Water Total Lost Time Incidents by Time in Service (Chart 15)**  
Based on 3 Incidents



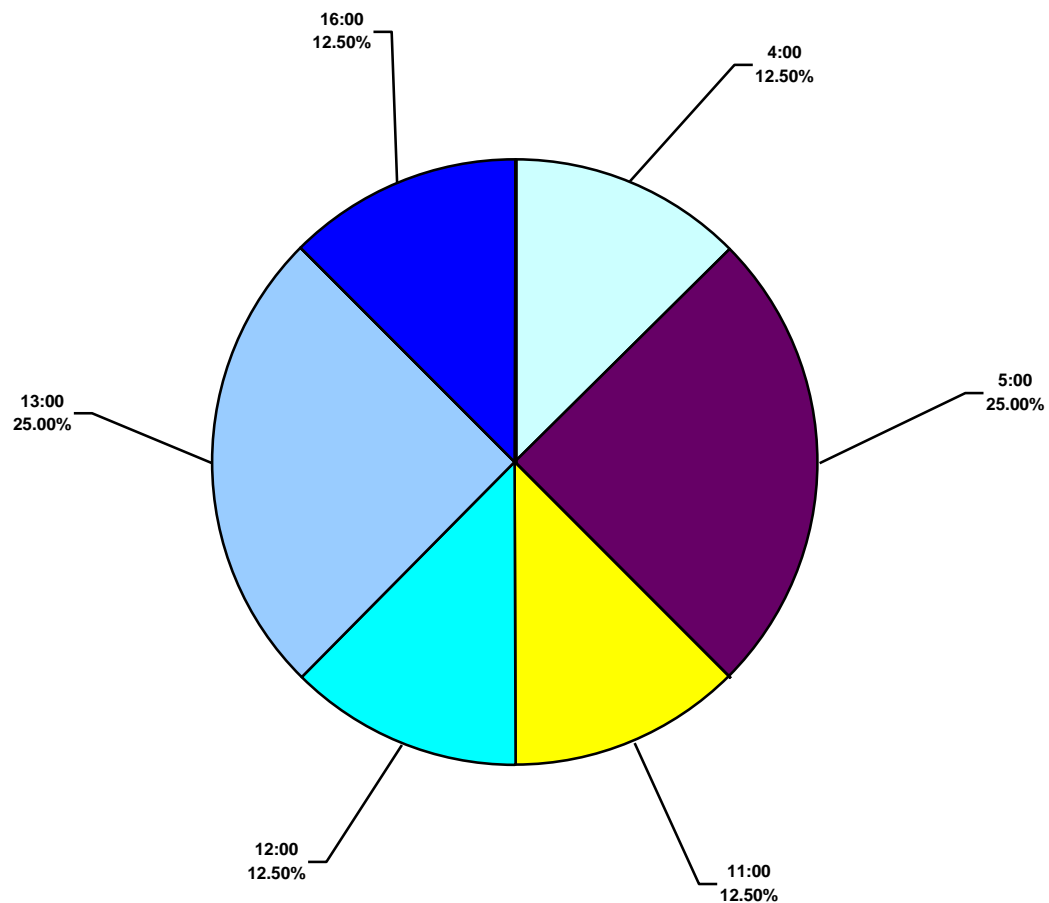
South America Water Total Recordable Incidents by Time in Service (Chart 16)  
Based on 8 Incidents



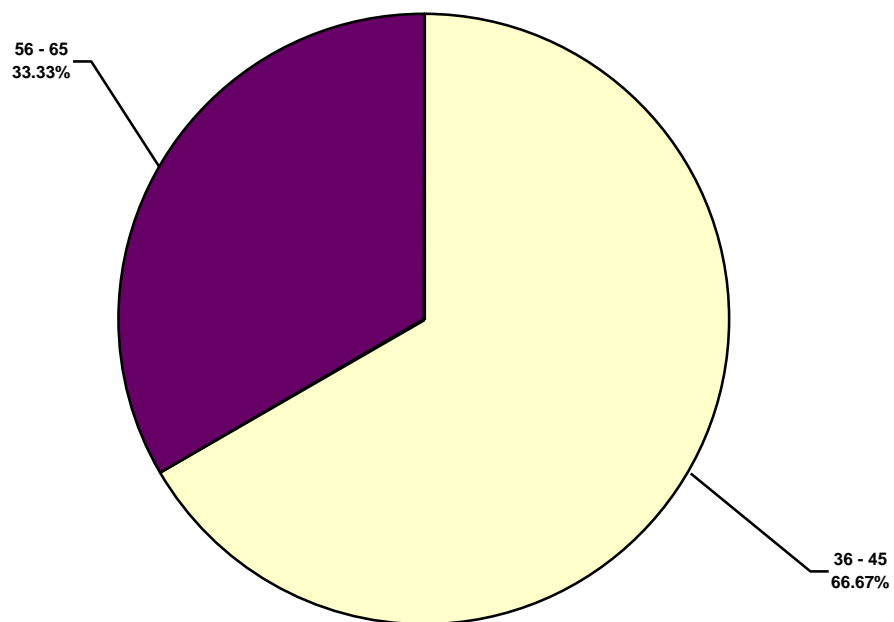
South America Water Total Lost Time Incidents by Time of Day (Chart 17)  
Based on 9 Incidents



South America Water Total Recordable Incidents by Time of Day (Chart 18)  
Based on 8 Incidents



**South America Water Total Lost Time Incidents by Age (Chart 19)**  
Based on 3 Incidents



**South America Water Total Recordable Incidents by Age (Chart 20)**  
Based on 7 Incidents

