



## Remote Surveys

---

John Preston | 10 April, 2019  
IADC Maintenance Committee



© 2019 American Bureau of Shipping. All rights reserved

---

# What is Remote Survey?

## ABS Remote Survey Program

- Remote execution of select surveys with verification through transfer of digital documentation:
  - Documentation/reports
  - Photographs
  - Recorded video
  - Live video and audio
- Current service offering:
  - Continuous Machinery Survey (CMS) parts
  - Tail Shaft Survey 3-month Extension
  - Minor Damage Survey
  - Rectification of Class Recommendation or Statutory Deficiency (OSR and OSD)
  - Remote Underwater Examination of Offshore Units

## Remote Inspection Technologies (RIT)

- Inspection technologies that allow close-up access. A complement or alternative to traditional means of access (staging, cherry picker, rafting).
  - Unmanned Aerial Vehicles (UAV/drone)
  - Remotely Operated Underwater Vehicle (ROV)
  - Robotic Crawler
- RIT are *NOT* required for Remote Survey, but are a useful inspection tool in some cases
  - *ABS Guidance Notes on the Use of Remote Inspection Technologies*, expected release March 2019

---

# Remote Survey Process



Visit: [www.eagle.org/ABSRemoteSurvey](http://www.eagle.org/ABSRemoteSurvey)



ABS will evaluate the requests and respond within 24 hours



Azure secure service: documentation, videos, photos



Documentation is reviewed and credit may be given via O2K

---

# Remote Survey – Survey Team



---

# Service Offerings

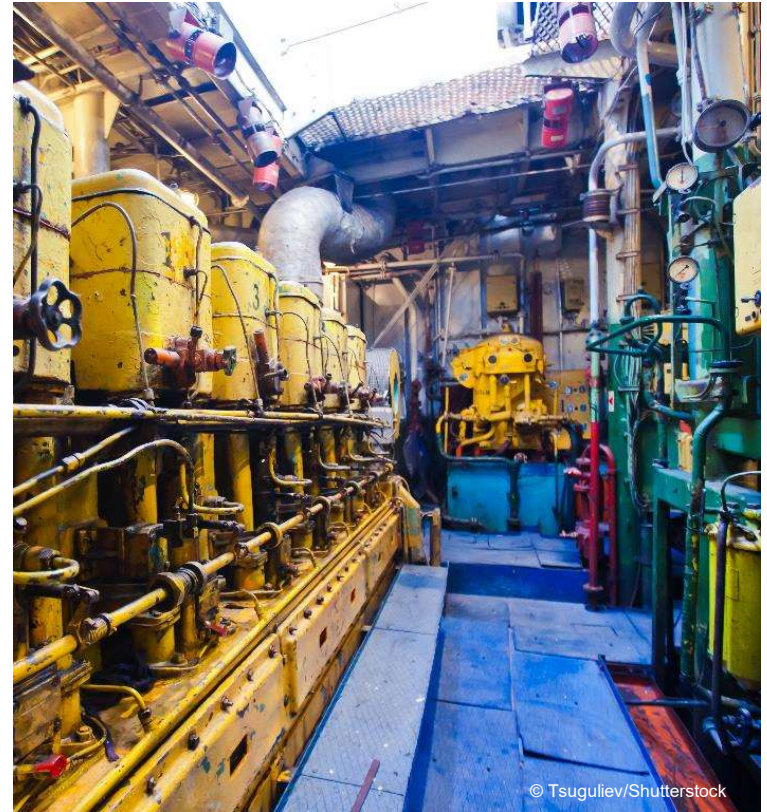
ABS Remote Survey Program



---

# Continuous Machinery Survey

- Eligible for vessels maintaining PMP notation
- Preventative Maintenance and Condition Monitoring:
  - Items reviewed individually
  - Follow-up validation may be required prior to crediting the next Annual Survey
- Non-attendance verification documentation:
  - Computer maintenance system
  - Reports/videos of operational tests of any moving/rotating equipment
  - Condition monitoring report
  - Health reports



---

# Tailshaft Survey 3-month Extension

- Eligible for any vessel with a tailshaft
- Extends tailshaft survey due date for three months
- Non-attendance verification documentation:
  - Visual inspection of all accessible parts
  - Verification of the inboard seal
  - Review of service and test records
  - Verification of no reported repairs by grinding or welding
  - Review of clearance records or previous wear down



---

# Minor Damage Survey

- Eligible for any minor damage upon review and acceptance
- Follow-up validation may be required
- Non-attendance verification documentation:
  - Repair plan
  - Written report
  - Sketches
  - OEM specifications
  - Photographs
  - Videos
  - Measurements



© Tawansak/Shutterstock



---

# Rectification of OSR and OSD

OSR – Outstanding Class Recommendation

OSD – Outstanding Statutory Deficiency

- Eligibility dependent on ABS Surveyor review
- Follow-up validation may be required
- Non-attendance verification documentation:
  - Documentation/reports
  - Photos
  - Videos
- OSD items subject to flag authorization and approval



---

## Remote Underwater Examination of Offshore Units

- Eligible for underwater portion of Drydock Survey
- Remote verification requirements:
  - Audio, video, communication feed
  - Minimum 720p resolution
  - Less than 6 seconds lag
  - ABS Surveyor attendance with Owner at the viewing facility
  - UWILD report submission
- Examination must be performed by an ABS approved external specialist



---

# Request a Remote Survey

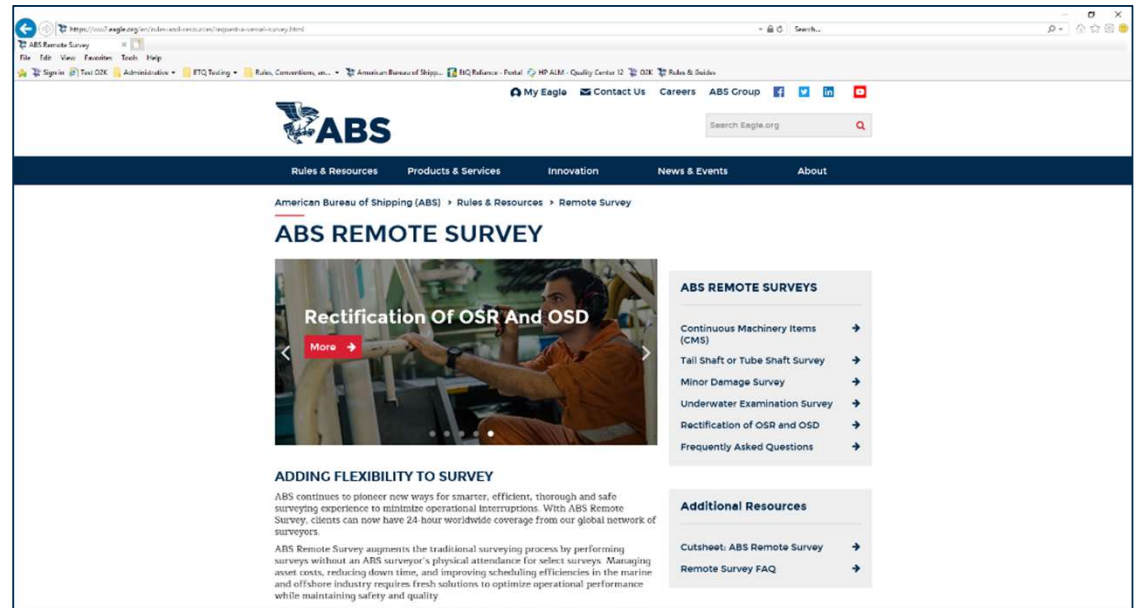
ABS Remote Survey Program



---

# Online Survey Request

- [www.eagle.org/RemoteSurvey](http://www.eagle.org/RemoteSurvey)
  - Remote Survey online request forms
  - Description of remote survey process
  - Service offering cutsheet
  - FAQ



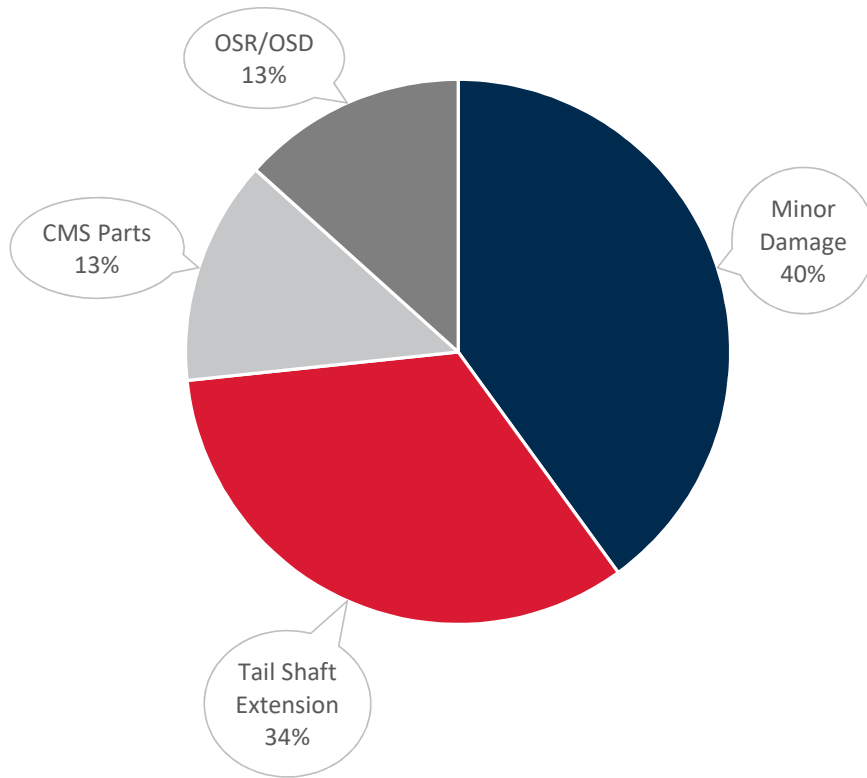
---

# Remote Survey Experience to Date

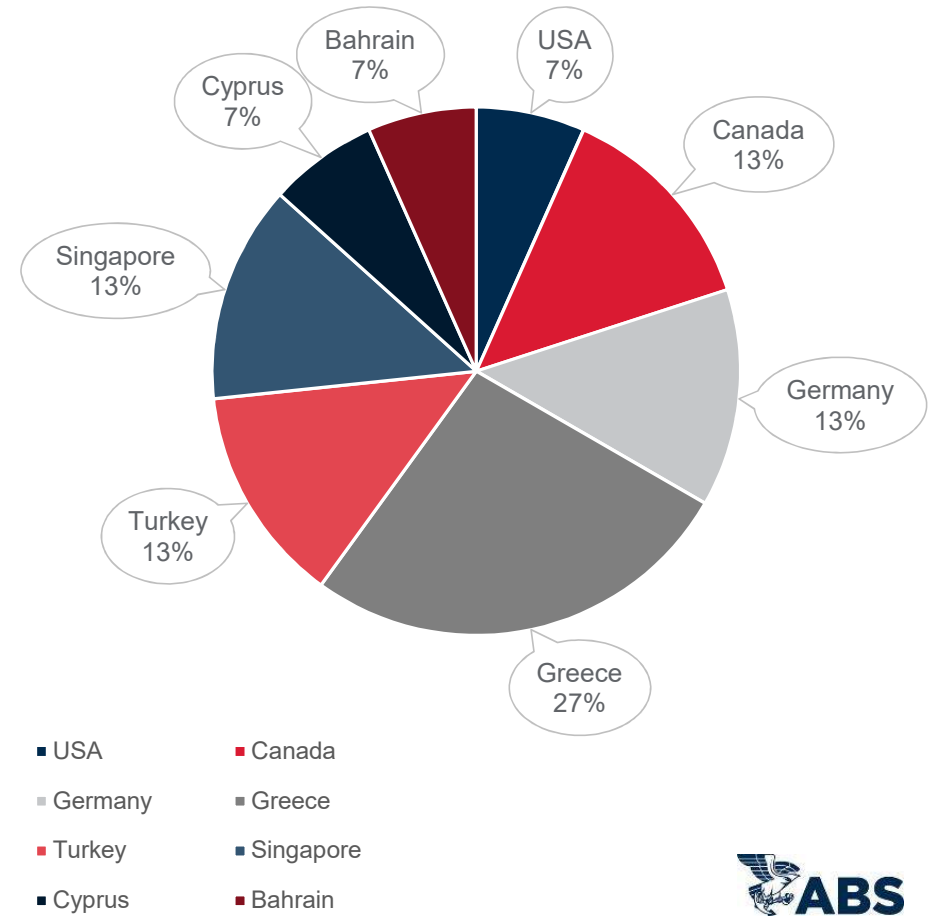
*ABS Remote Survey Program*



## Remote Survey Types



## Survey Request Originating Countries





---

Thank You

[www.eagle.org](http://www.eagle.org)