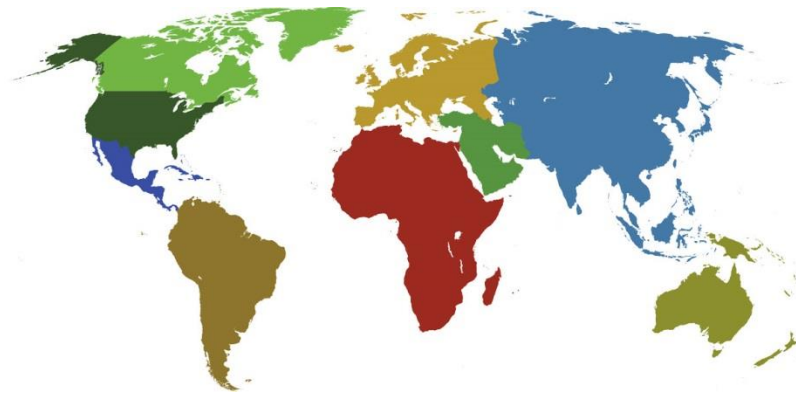




IADC

**IADC
ISP PROGRAM**

2017



**Summary of Occupational
Incidents
(Canada Land Totals)**

Issued 15 June 2018

Table of Contents

(Table of Contents is Hyperlinked, Just click on Topic & go)

IADC 2017 CANADA LAND TOTALS (TABLE 1).....	1
<i>Canada Land Total Incidence Rates vs Man-hours (Figure 1)</i>	1
IADC 2017 CANADA LAND CHARTS	2
<i>Canada Land Total Recordable Incidents by Month (Chart 1)</i>	2
<i>Canada Land Total Recordable Incidents by Occupation (Chart 2)</i>	3
<i>Canada Land Total Recordable Incidents by Body Part (Chart 3)</i>	4
<i>Canada Land Total Recordable Incidents by Incident Type (Chart 4)</i>	5
<i>Canada Land Total Recordable Incidents by Equipment (Chart 5)</i>	6
<i>Canada Land Total Recordable Incidents by Operation (Chart 6)</i>	7
<i>Canada Land Total Recordable Incidents by Location (Chart 7)</i>	8
<i>Canada Land Total Recordable Incidents by Time in Service (Chart 8)</i>	9
<i>Canada Land Total Recordable Incidents by Time of Day (Chart 9)</i>	100
<i>Canada Land Total Recordable Incidents by Age (Chart 10)</i>	11

IADC 2017 Canada Land Totals (Table 1)

	<u>Total</u>
Total Manhours	1,016,078
Total Medical Treatment Incidents	2
Total Restricted Work Incidents	2
Total Lost Time Incidents	2
Total Fatalities	0
Total Recordables	6
MTO Incidence Rate	0.39
RWC Incidence Rate	0.39
LTI Incidence Rate	0.39
LTI Frequency Rate	1.97
DART Incidence Rate	0.79
DART Frequency Rate	3.94
Recordable Incidence Rate	1.18
Recordable Frequency Rate	5.91

Companies Reporting: Land – 3

Medical Treatment Incidence Rate =
MTOs X 200,000

Restricted Work Incidence Rate = RWCs X 200,000

Lost Time Incidence Rate = LTIs + FTLs X 200,000

DART Incidence Rate = LTIs + RWC X 200,000

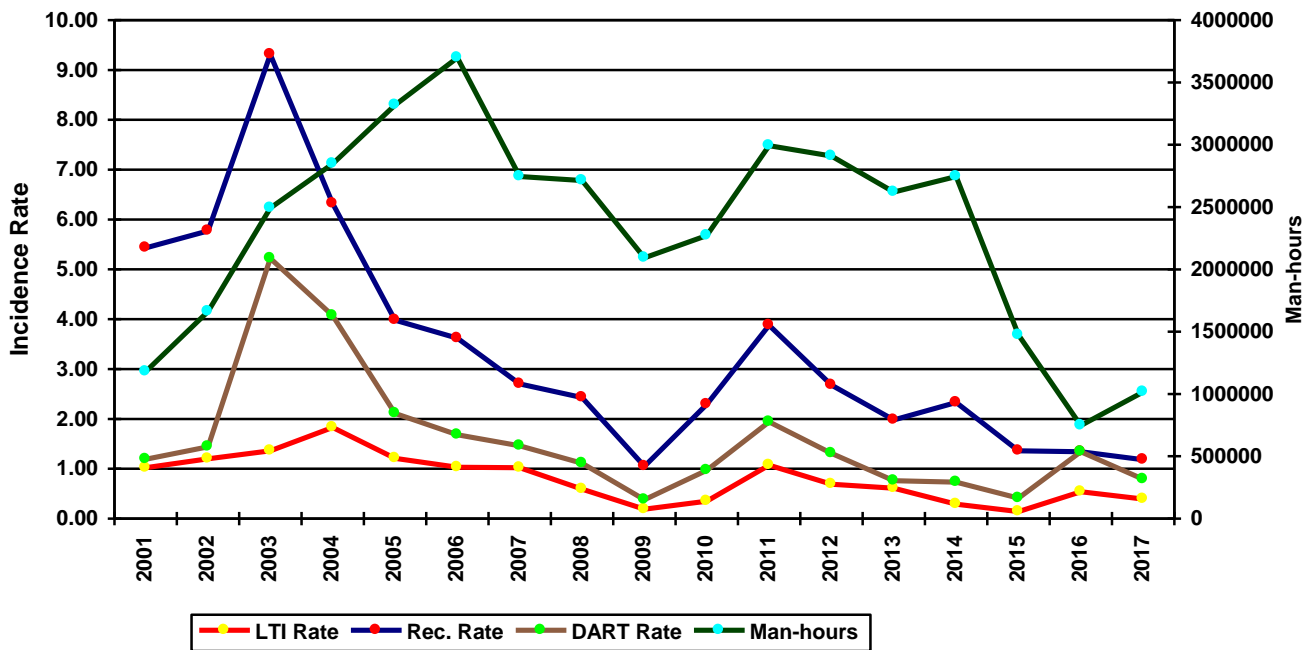
Recordable Incidence Rate = RCRD X 200,000

Lost Time Frequency Rate = LTIs +FTLs X 1,000,000

DART Frequency Rate = LTIs + RWC X 1,000,000

Recordable Frequency Rate = RCRD X 1,000,000

Canada Land Total Incidence Rates vs Man-hours (Figure 1)

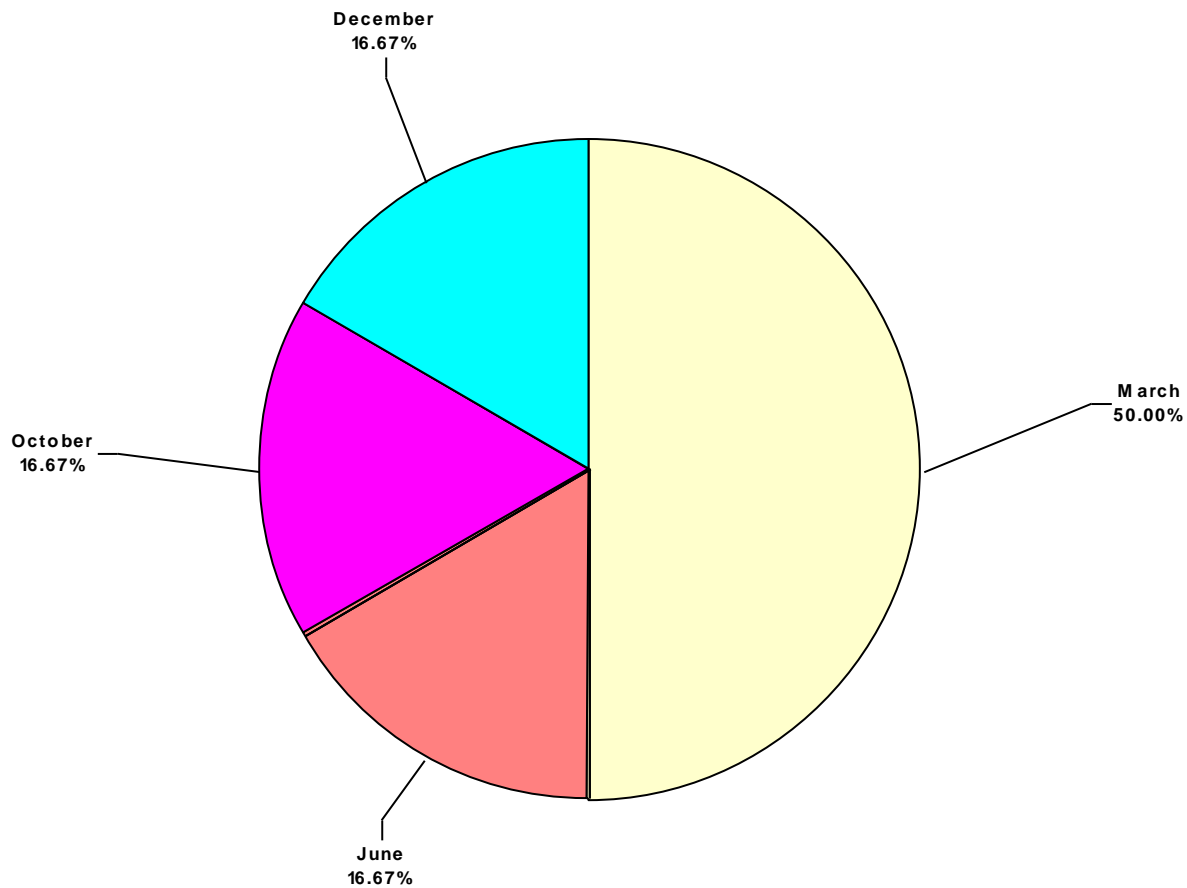


IADC 2017 Canada Land Charts

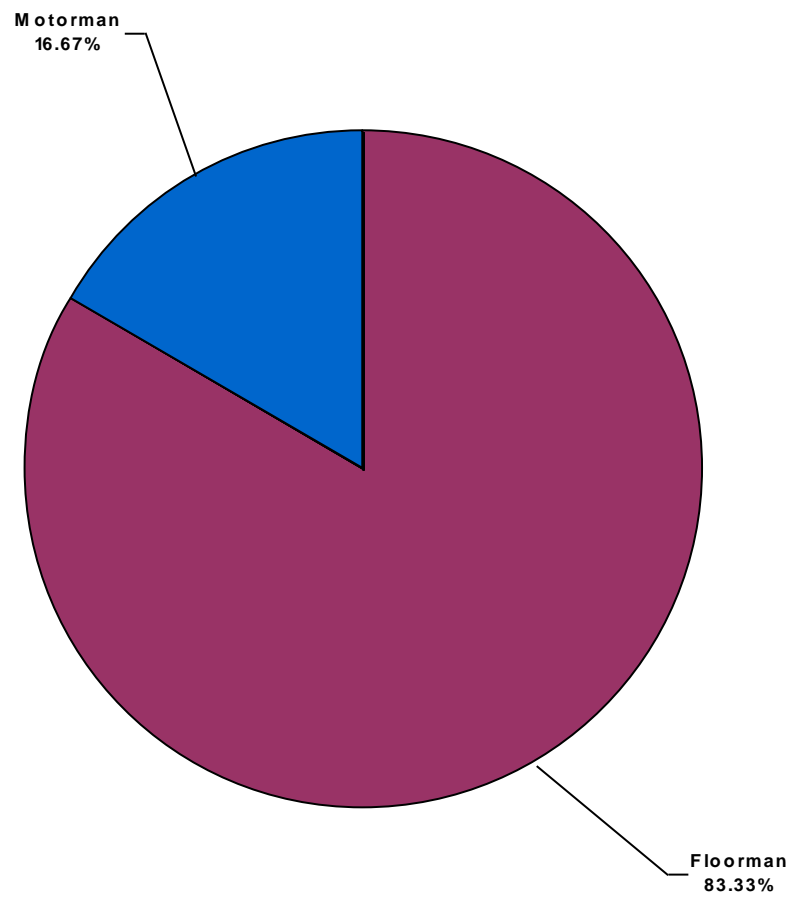
Note: There were only two Lost Time Incident recorded for 2017, therefore there will not be any charts.

Canada Land Total Recordable Incidents by Month (Chart 1)

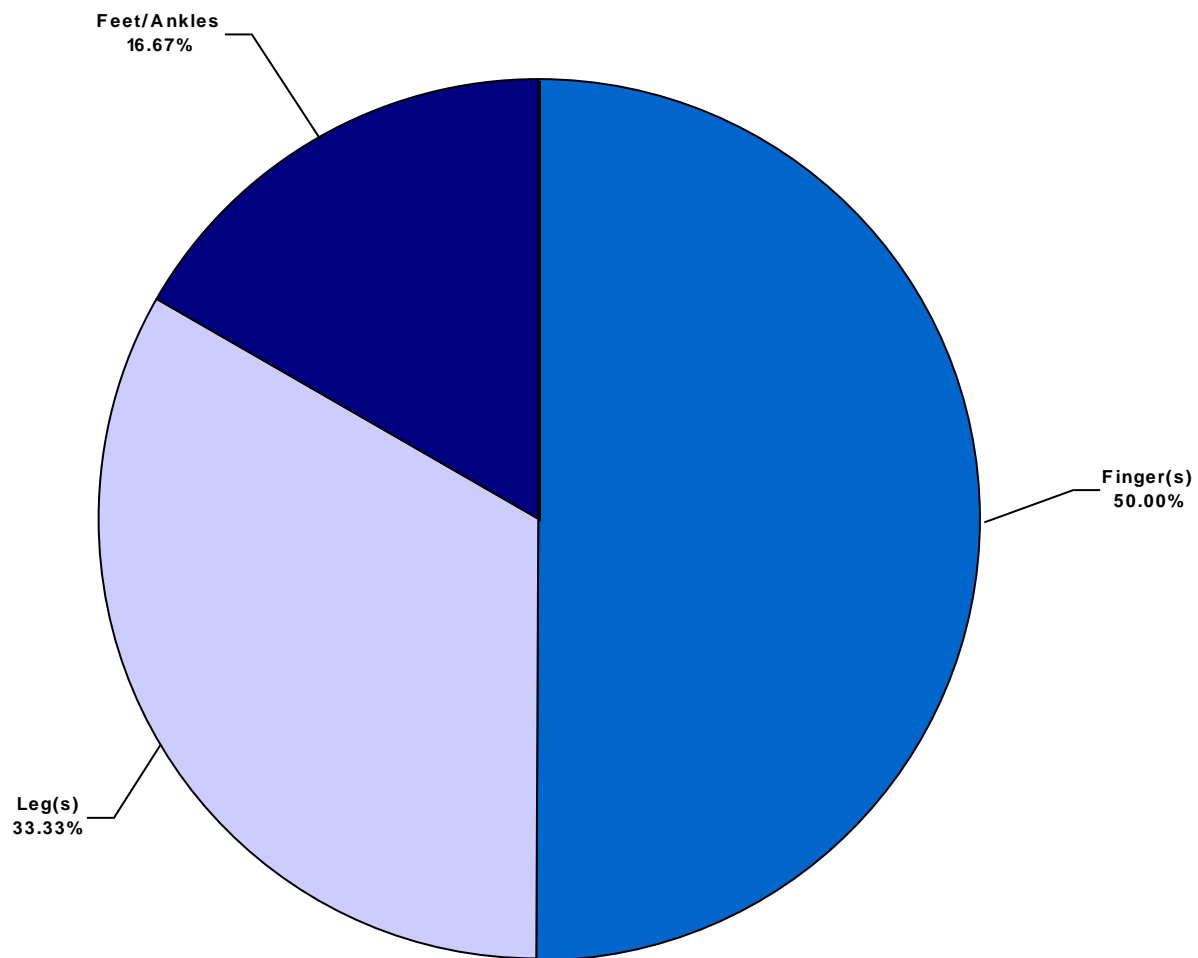
Based on 6 Incidents



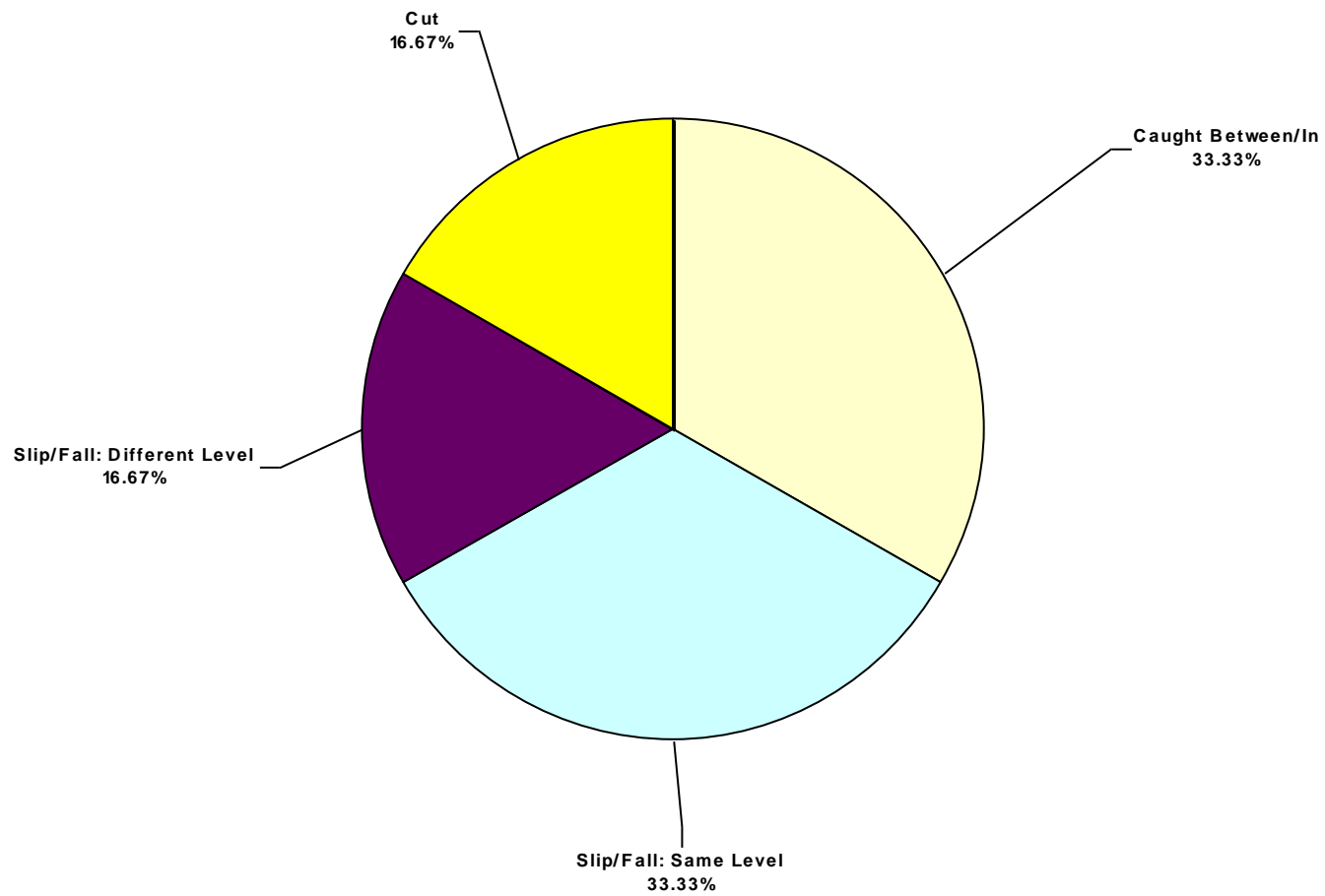
Canada Land Total Recordable Incidents by Occupation (Chart 2)
Based on 6 Incidents



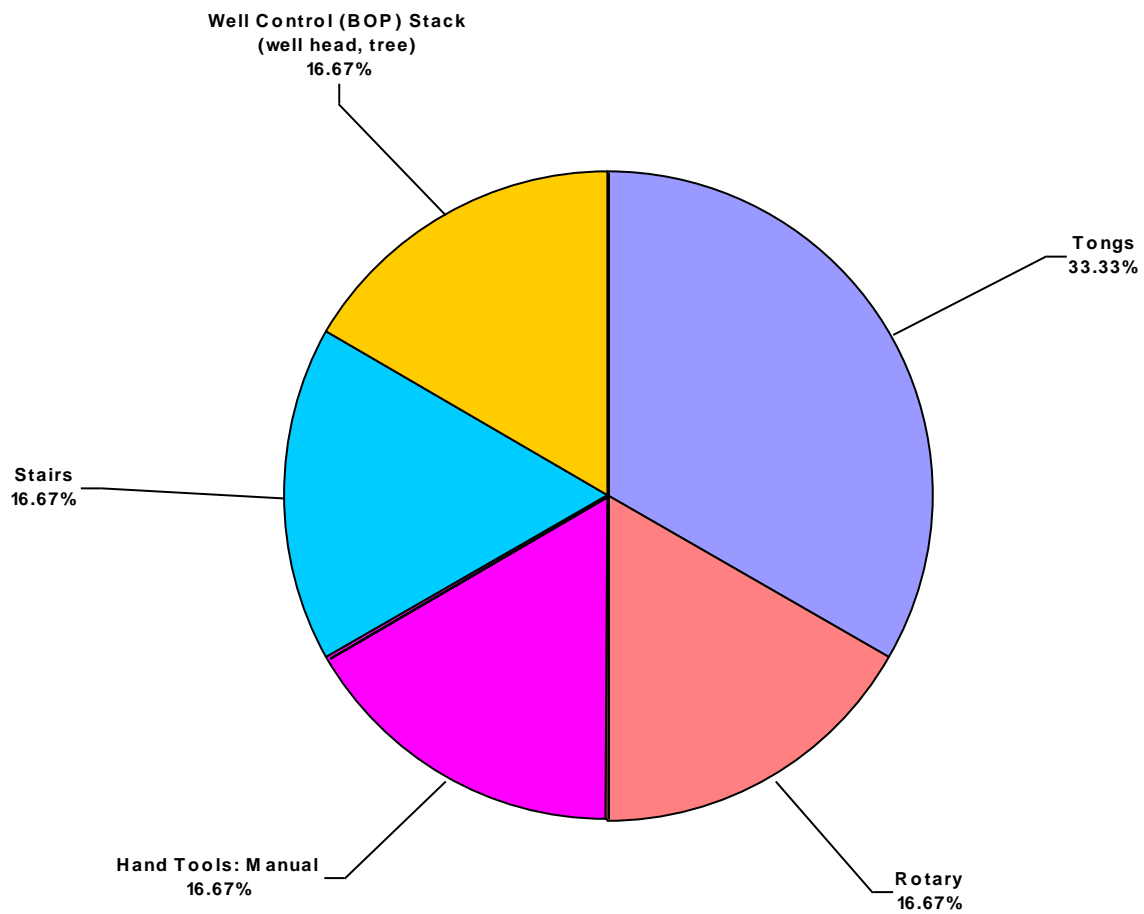
Canada Land Total Recordable Incidents by Body Part (Chart 3)
Based on 6 Incidents



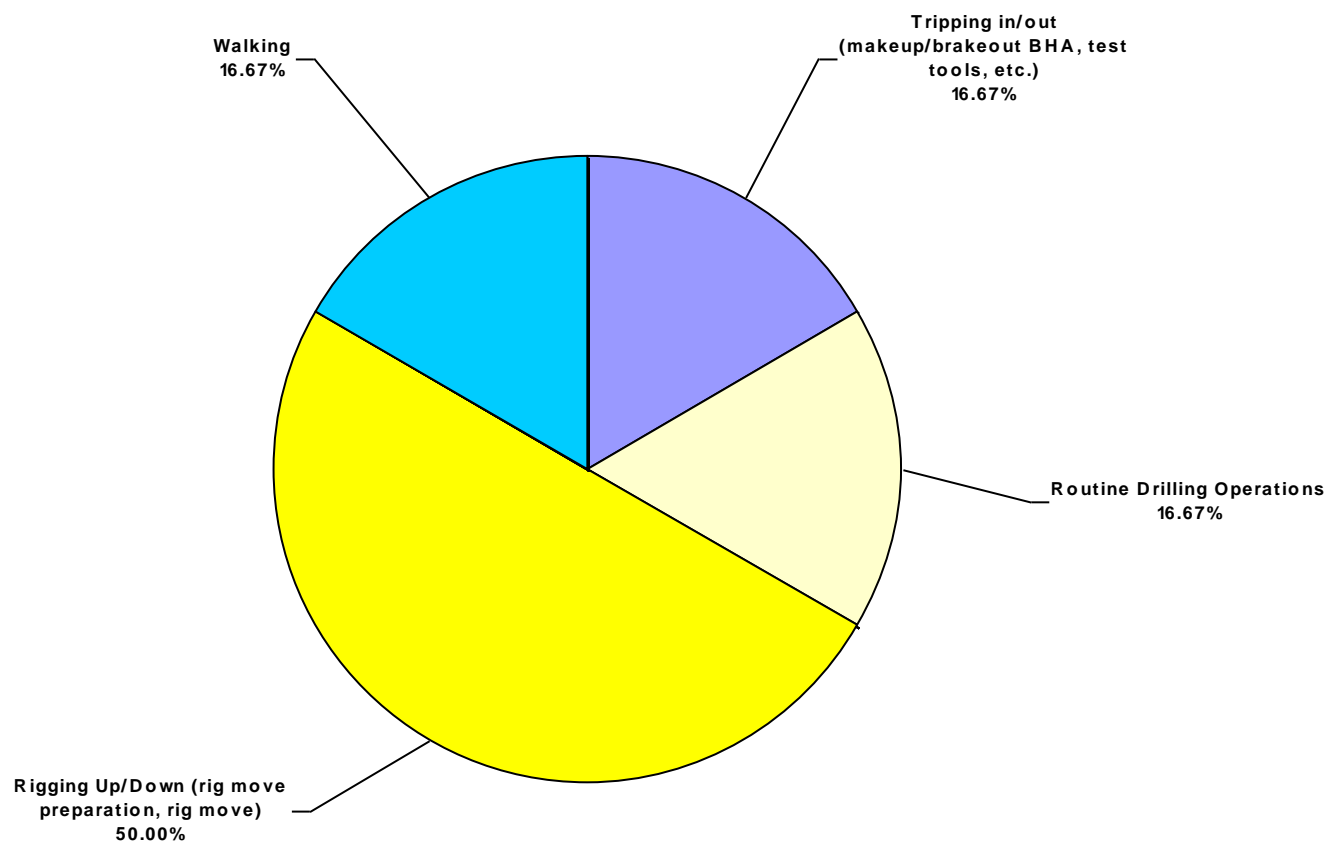
Canada Land Total Recordable Incidents by Incident Type (Chart 4)
Based on 6 Incidents



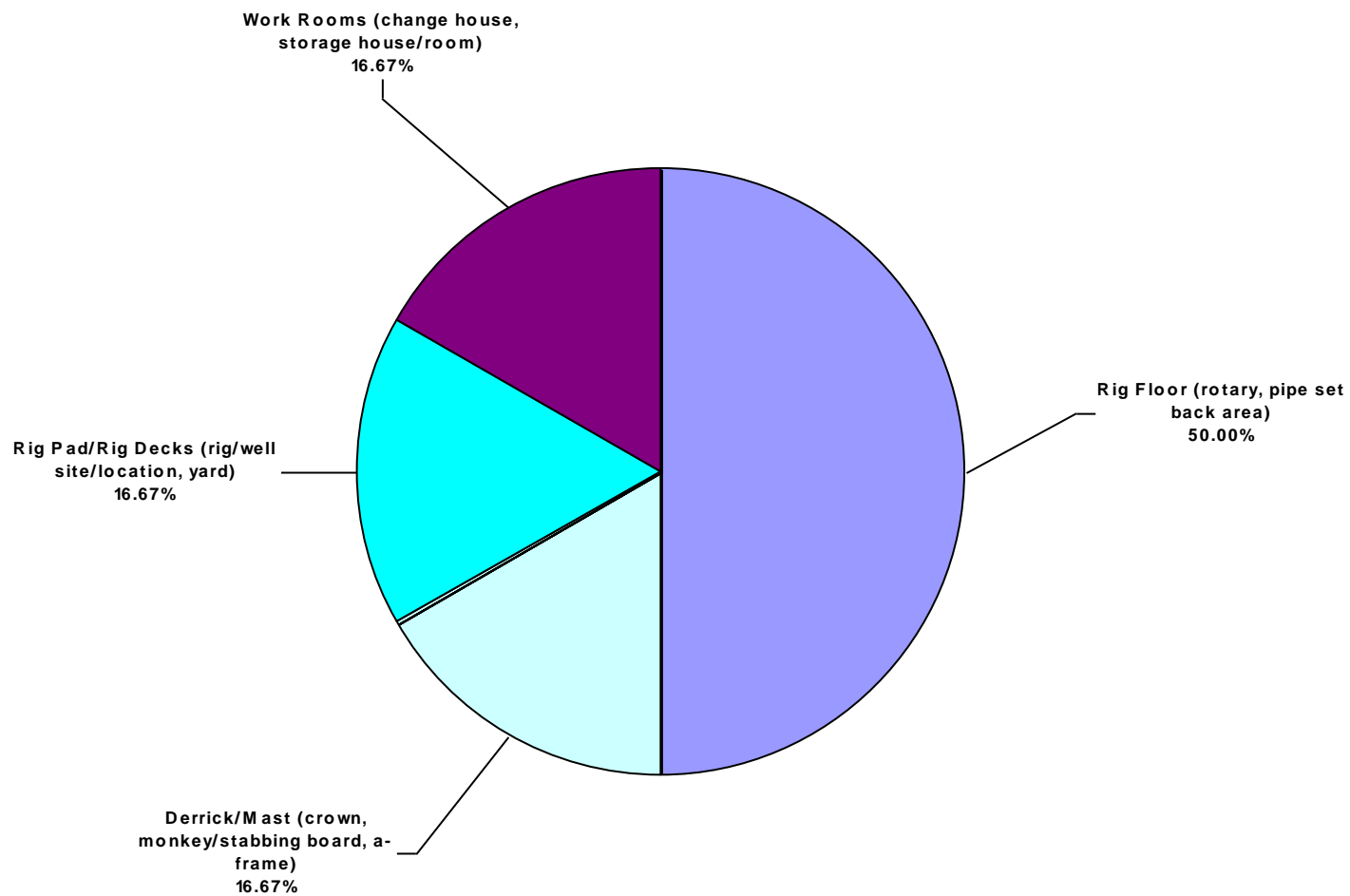
Canada Land Total Recordable Incidents by Equipment (Chart 5)
Based on 6 Incidents



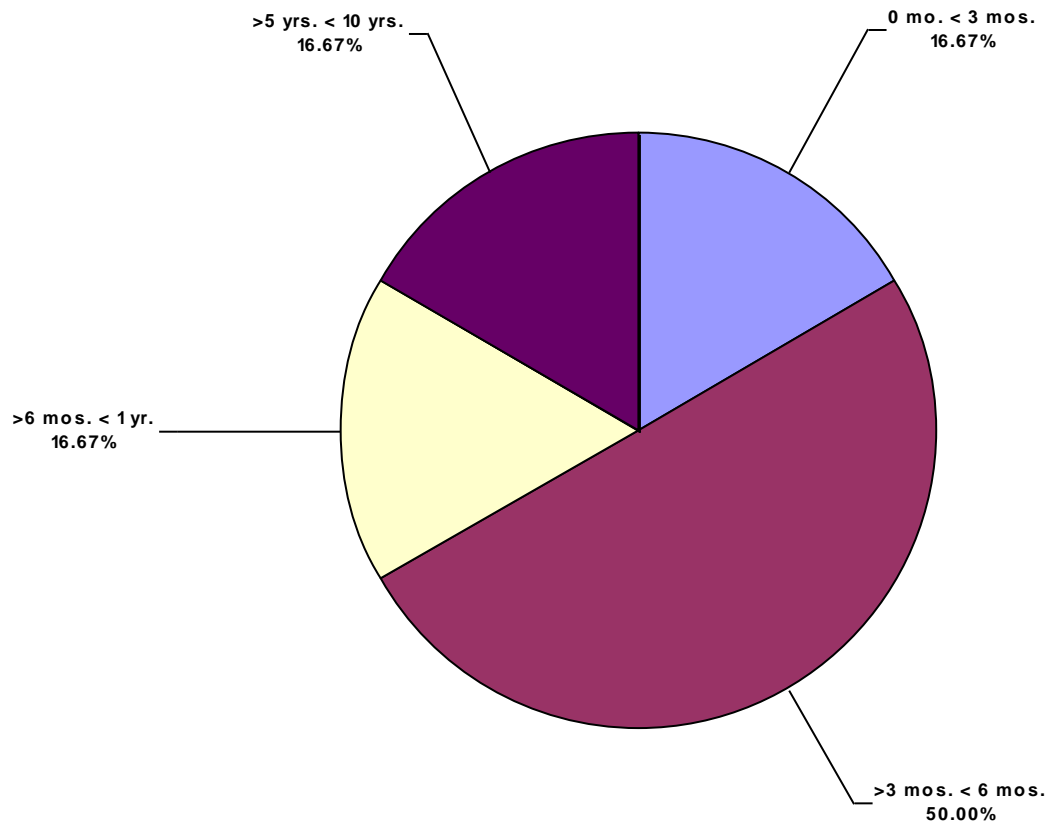
Canada Land Total Recordable Incidents by Operation (Chart 6)
Based on 6 Incidents



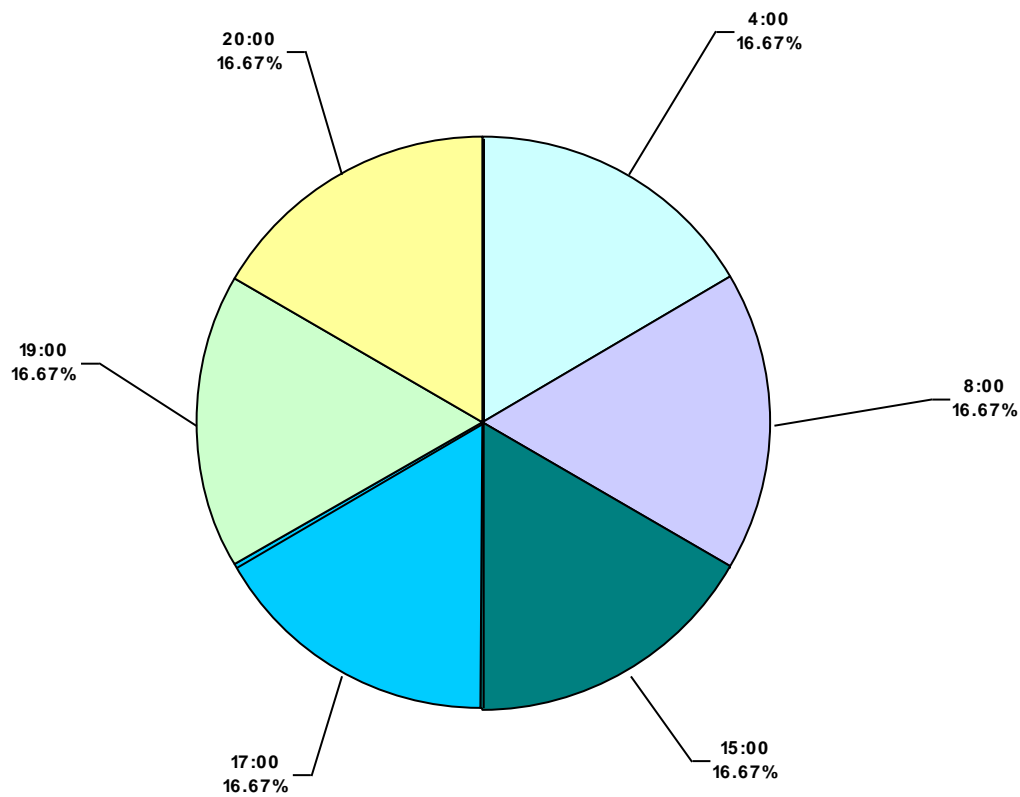
Canada Land Total Recordable Incidents by Location (Chart 7)
Based on 6 Incidents



Canada Land Total Recordable Incidents by Time in Service (Chart 8)
Based on 6 Incidents



Canada Land Total Recordable Incidents by Time of Day (Chart 9)
Based on 6 Incidents



Canada Land Total Recordable Incidents by Age (Chart 10)
Based on 6 Incidents

