



IADC

**IADC
ISP PROGRAM**

2017



**Summary of Occupational
Incidents
(Australasia Land Totals)**

Issued 15 June 2018

Table of Contents

(Table of Contents is Hyperlinked, Just click on Topic & go)

IADC 2017 AUSTRALASIA LAND TOTALS (TABLE 1)	1
<i>Australasia Land Total Incidence Rates vs Man-hours (Figure 1)</i>	1
IADC 2017 AUSTRALASIA LAND CHARTS	2
<i>Australasia Land Total Recordable Incidents by Month (Chart 2)</i>	2
<i>Australasia Land Total Recordable Incidents by Occupation (Chart 4)</i>	3
<i>Australasia Land Total Recordable Incidents by Body Part (Chart 6)</i>	4
<i>Australasia Land Total Recordable Incidents by Incident Type (Chart 8)</i>	5
<i>Australasia Land Total Recordable Incidents by Equipment (Chart 10)</i>	6
<i>Australasia Land Total Recordable Incidents by Operation (Chart 12)</i>	7
<i>Australasia Land Total Recordable Incidents by Location (Chart 14)</i>	8
<i>Australasia Land Total Recordable Incidents by Time in Service (Chart 16)</i>	9
<i>Australasia Land Total Recordable Incidents by Time of Day (Chart 18)</i>	10
<i>Australasia Land Total Recordable Incidents by Age (Chart 20)</i>	11

IADC 2017 Australasia Land Totals (Table 1)

	<u>Total</u>
Total Man-hours	3,331,859
Total Medical Treatment Incidents	3
Total Restricted Work Incidents	3
Total Lost Time Incidents	3
Total Fatalities	0
Total Recordables	9
MTO Incidence Rate	0.18
RWC Incidence Rate	0.18
LTI Incidence Rate	0.18
LTI Frequency Rate	0.90
DART Incidence Rate	0.36
DART Frequency Rate	1.80
Recordable Incidence Rate	0.54
Recordable Frequency Rate	2.70

Companies Reporting: Land – 7

Medical Treatment Incidence Rate = MTOs X 200,000

Restricted Work Incidence Rate = RWCs X 200,000

Lost Time Incidence Rate = LTIs + FTLs X 200,000

DART Incidence Rate = LTIs + RWC X 200,000

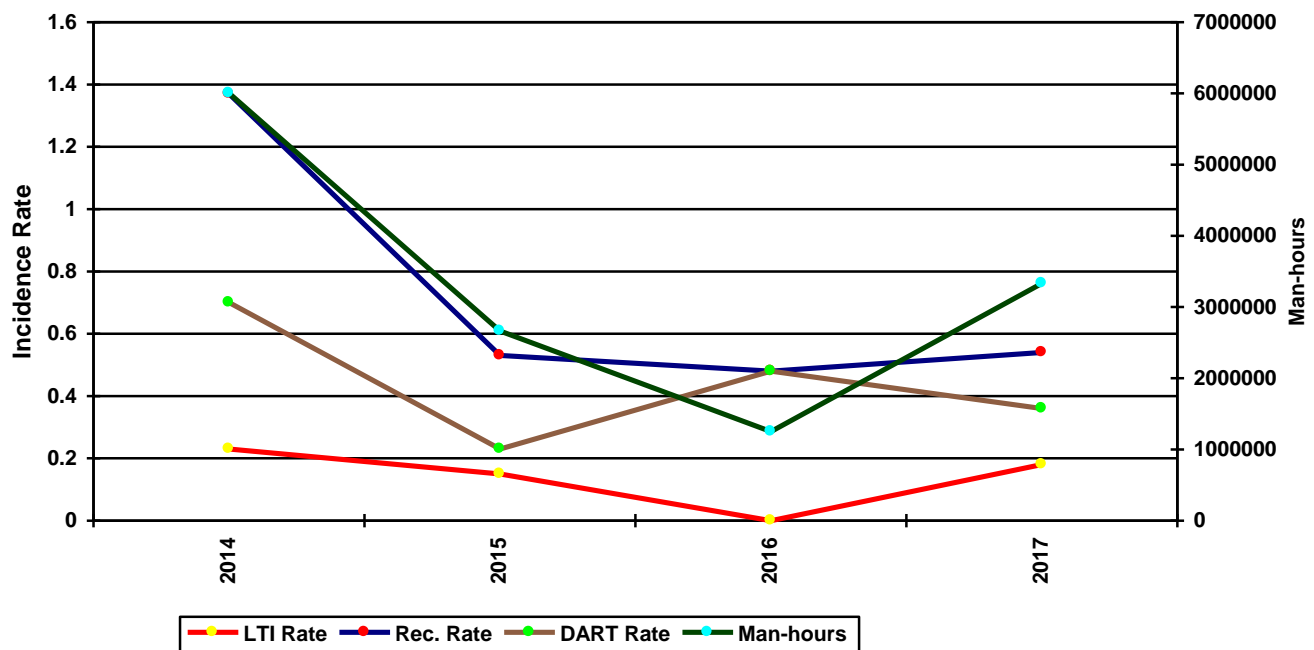
Recordable Incidence Rate = RCRD X 200,000

Lost Time Frequency Rate = LTIs +FTLs X 1,000,000

DART Frequency Rate = LTIs + RWC X 1,000,000

Recordable Frequency Rate = RCRD X 1,000,000

Australasia Land Total Incidence Rates vs Man-hours (Figure 1)

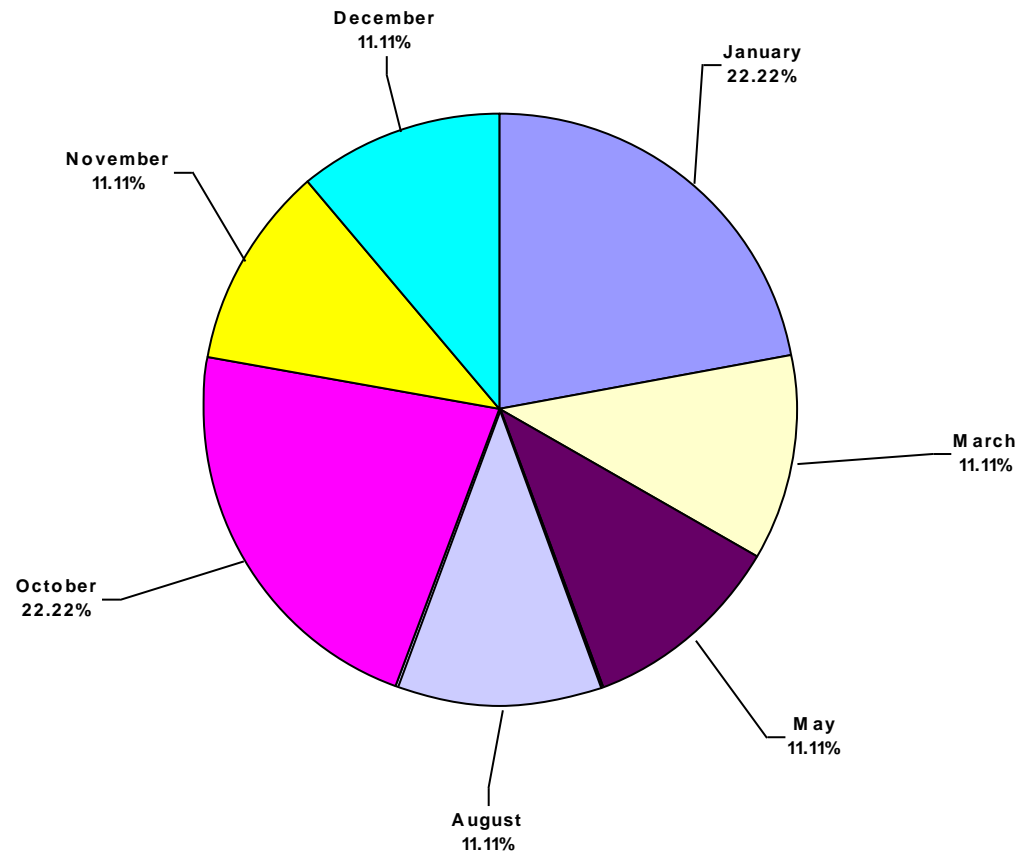


IADC 2017 Australasia Land Charts

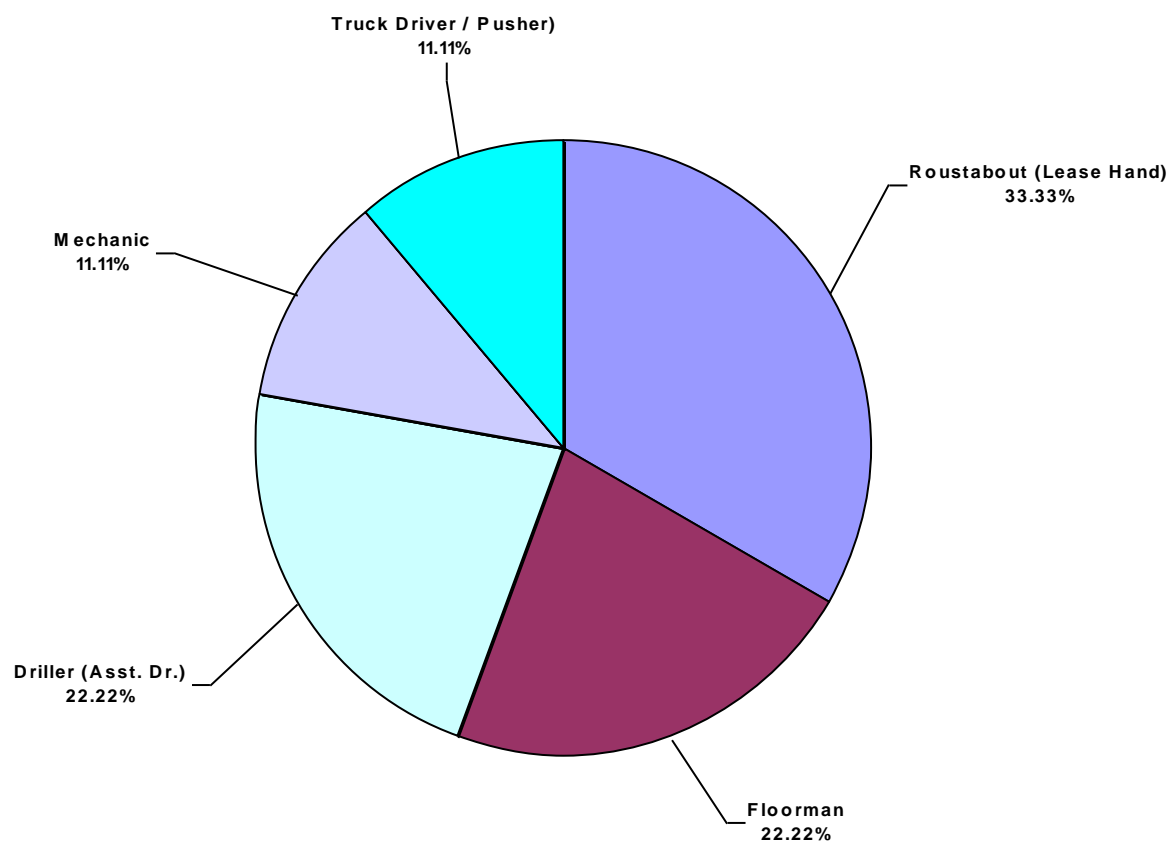
Note: There were three Lost Time Incidents recorded for 2017, therefore there will not be any charts.

Australasia Land Total Recordable Incidents by Month (Chart 1)

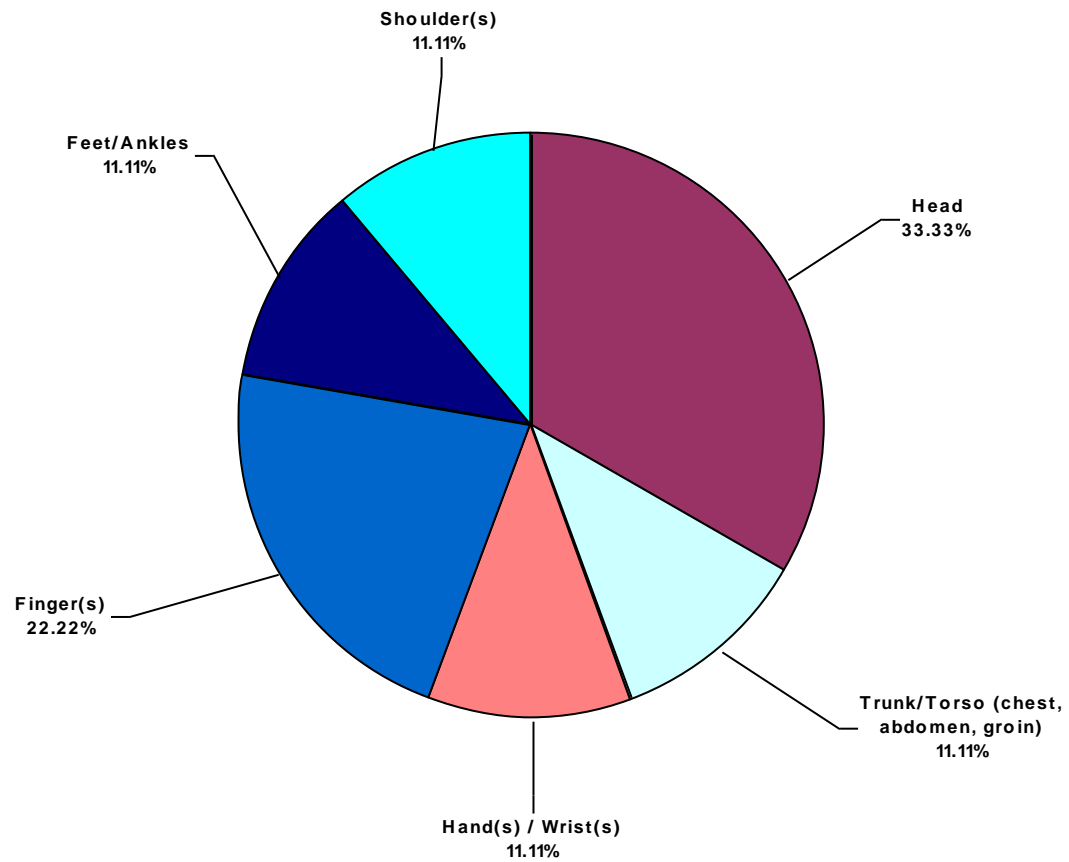
Based on 9 Incidents



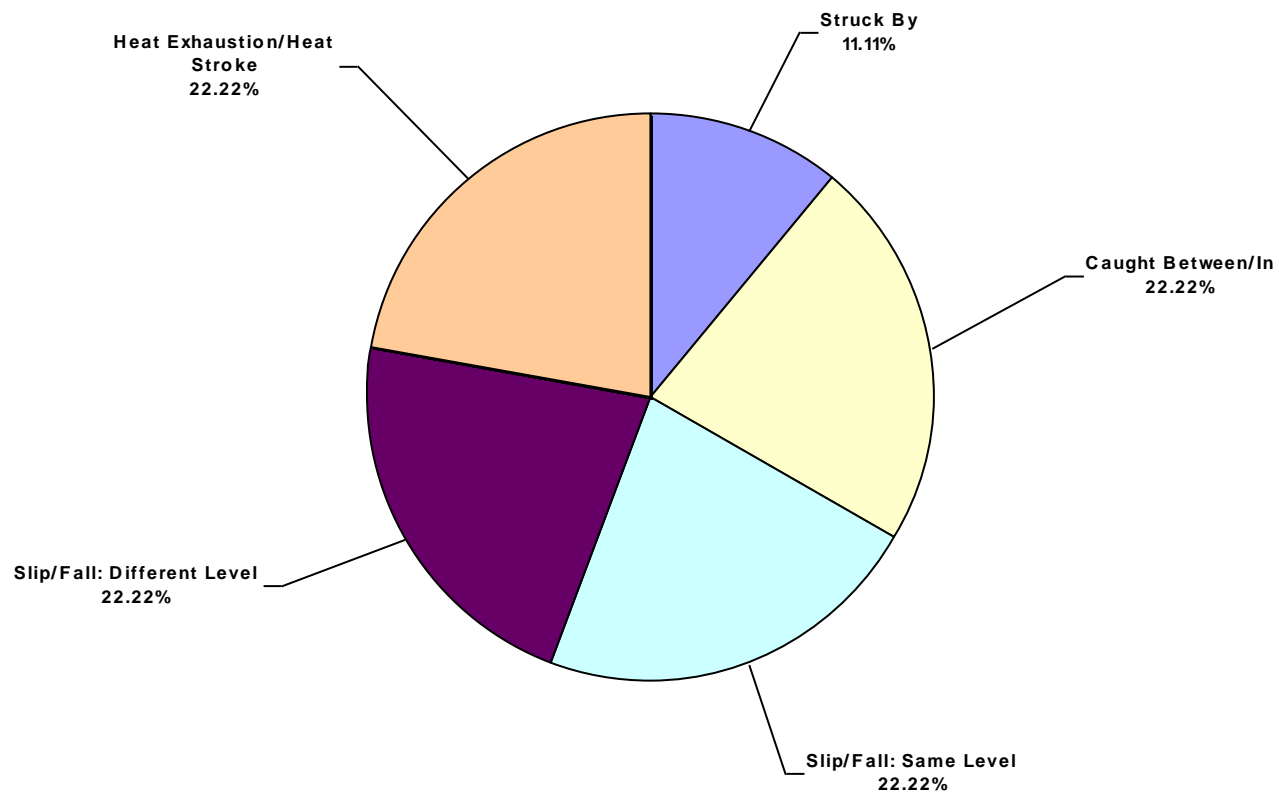
Australasia Land Total Recordable Incidents by Occupation (Chart 2)
Based on 9 Incidents



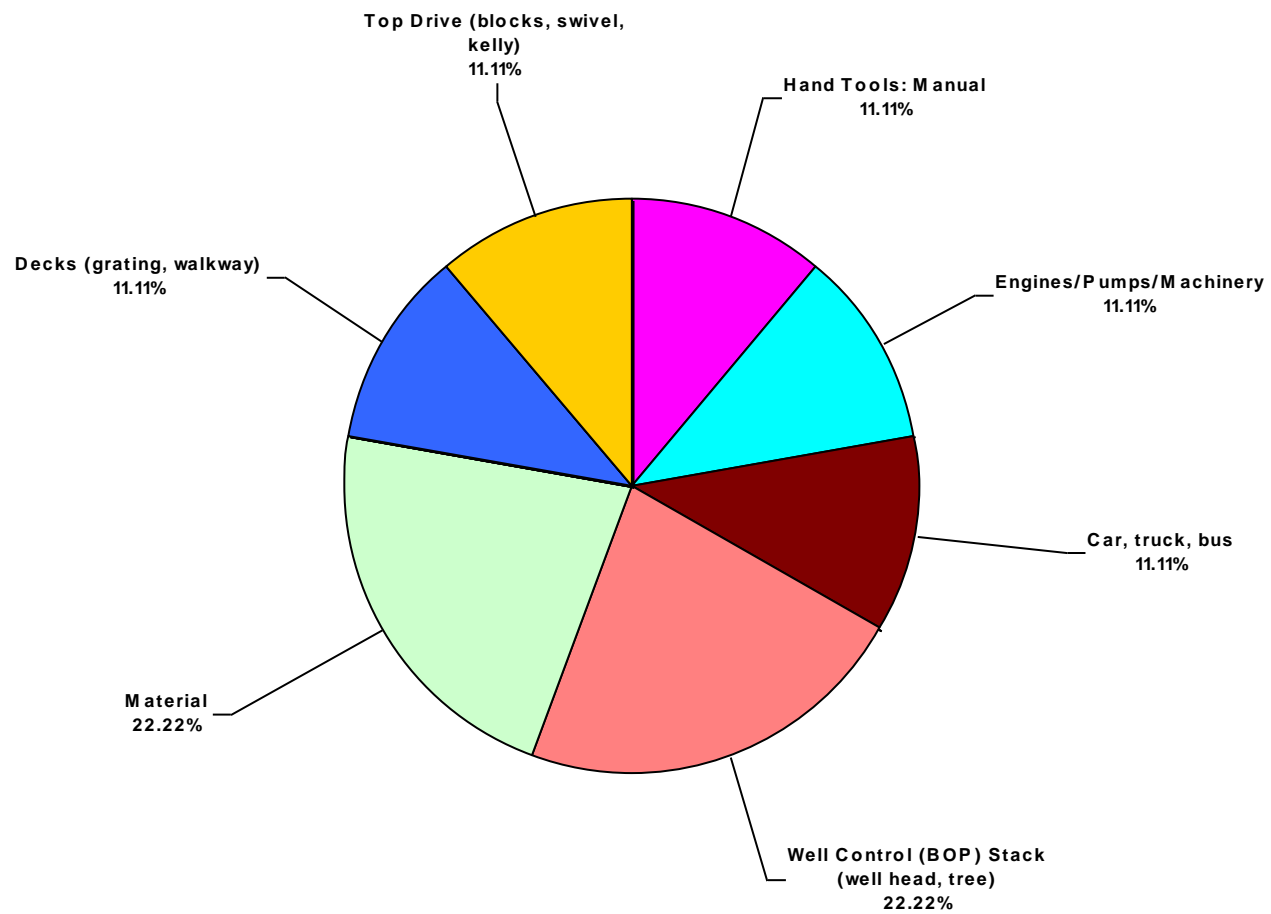
Australasia Land Total Recordable Incidents by Body Part (Chart 3)
Based on 9 Incidents



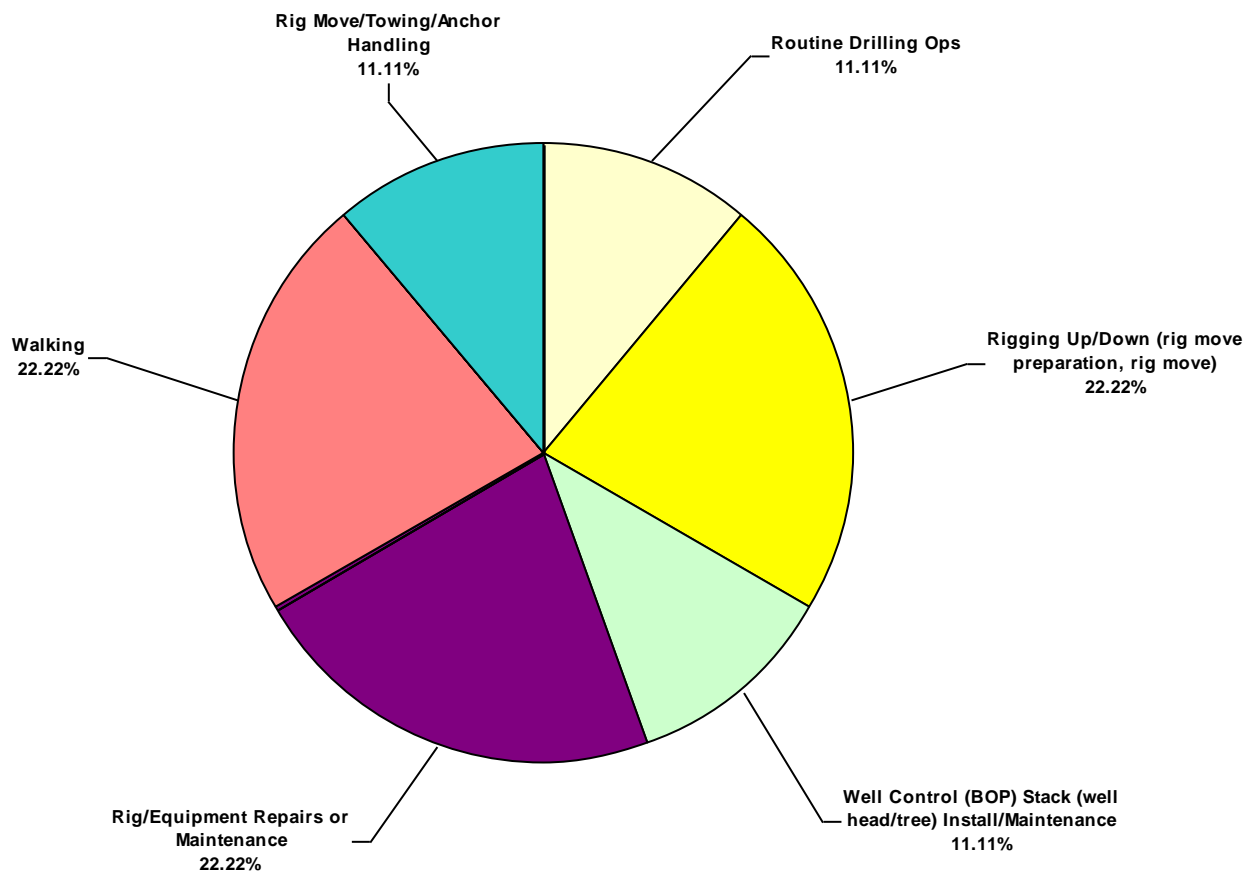
Australasia Land Total Recordable Incidents by Incident Type (Chart 4)
Based on 9 Incidents



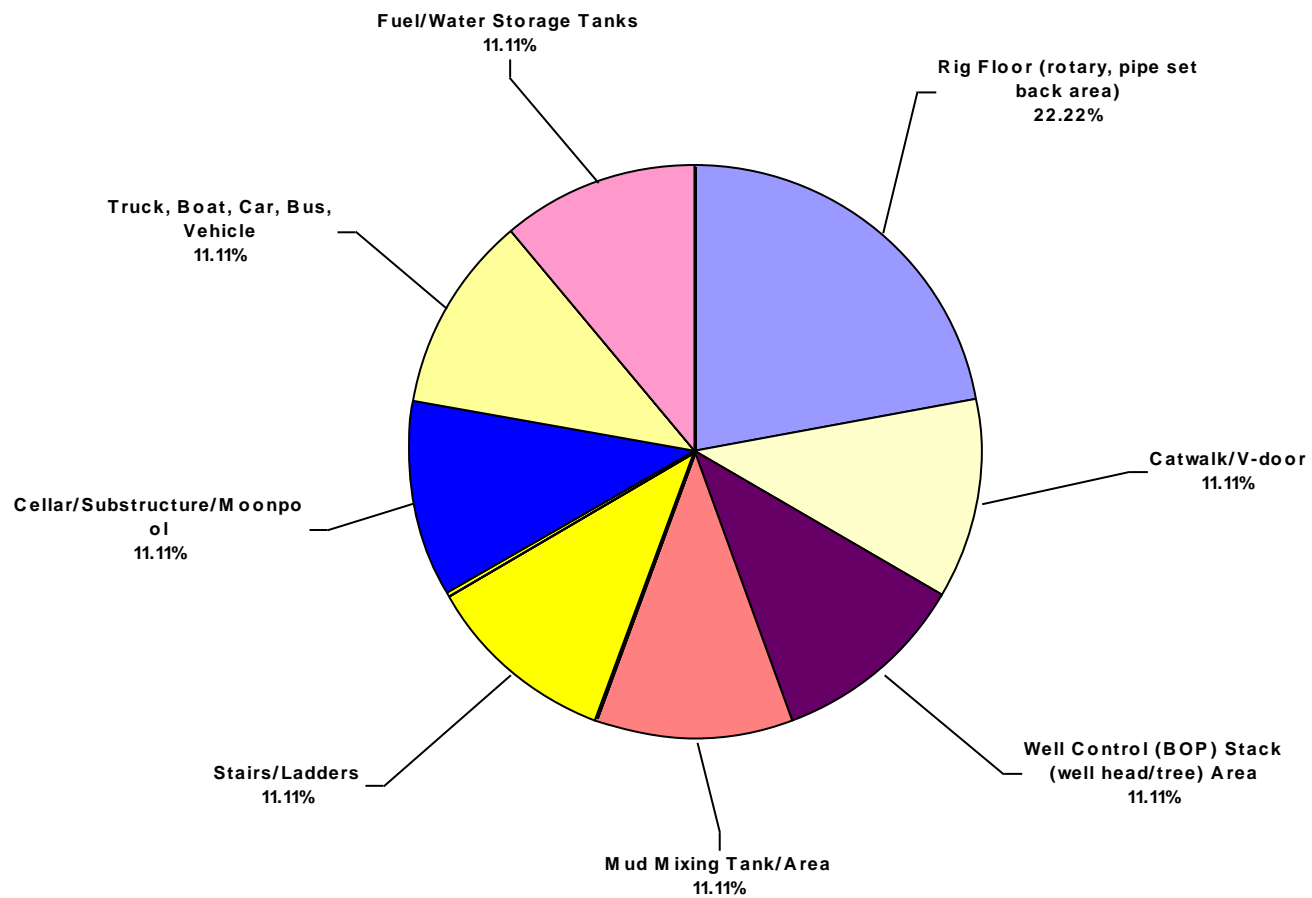
Australasia Land Total Recordable Incidents by Equipment (Chart 5)
Based on 9 Incidents



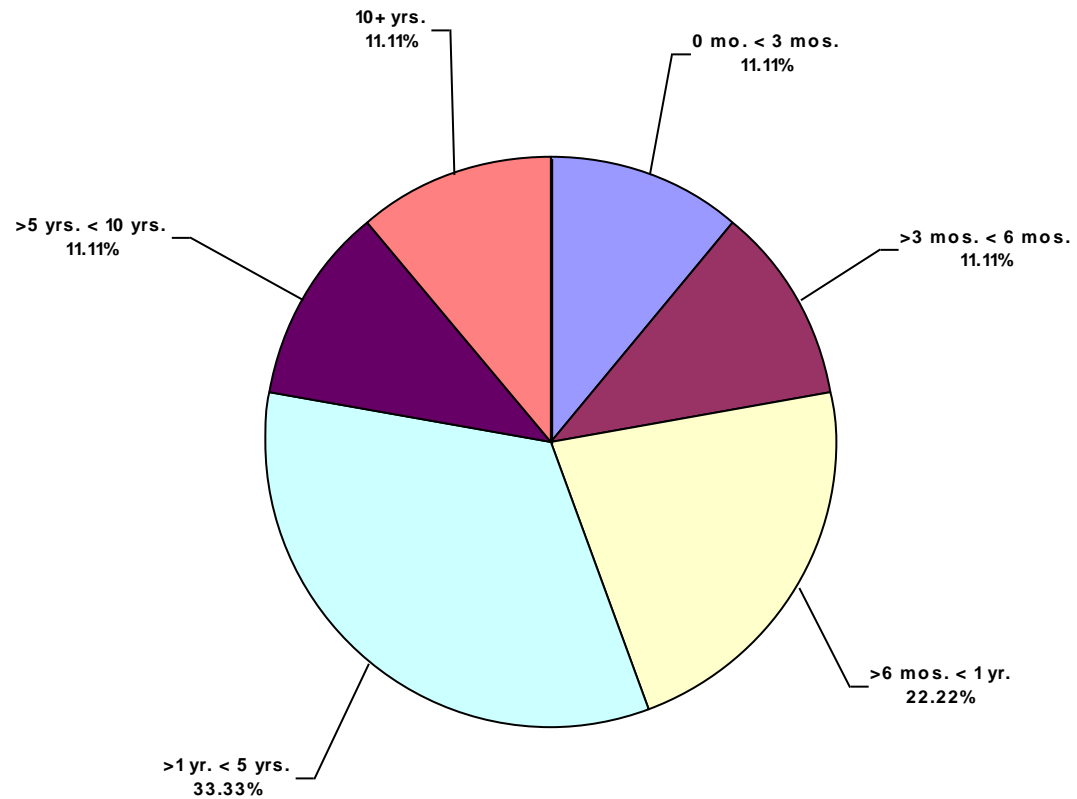
Australasia Land Total Recordable Incidents by Operation (Chart 6)
Based on 9 Incidents



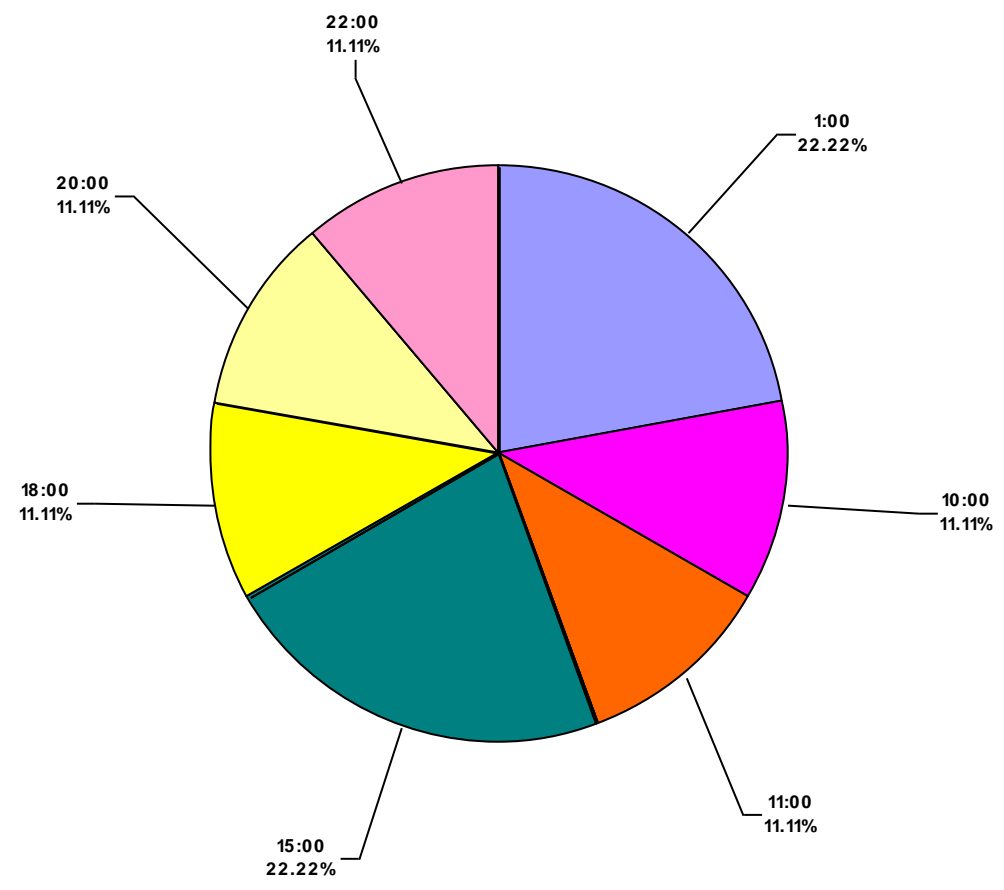
Australasia Land Total Recordable Incidents by Location (Chart 7)
Based on 9 Incidents



Australasia Land Total Recordable Incidents by Time in Service (Chart 8)
Based on 9 Incidents



Australasia Land Total Recordable Incidents by Time of Day (Chart 9)
Based on 9 Incidents



Australasia Land Total Recordable Incidents by Age (Chart 10)
Based on 8 Incidents

