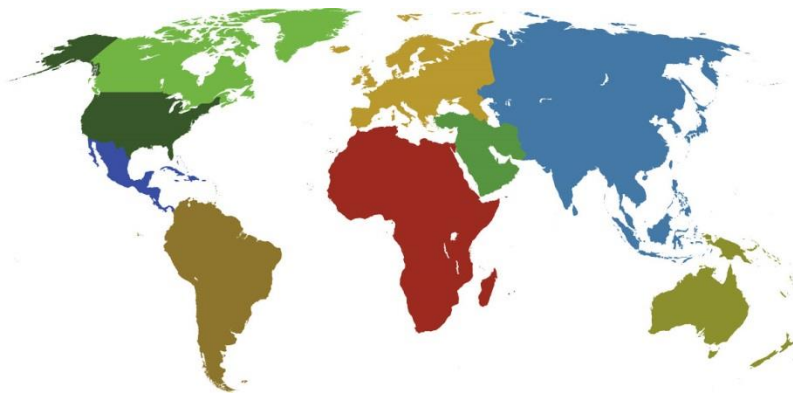




**IADC**

**IADC  
ISP PROGRAM**

**2017**



**Summary of Occupational  
Incidents  
(Industry Totals)**

*Issued 15 June 2018*

# Table of Contents

(Table of Contents is Hyperlinked, Just click on Topic & go)

<b>SUMMARY OF OCCUPATIONAL INCIDENTS INTRODUCTORY BRIEFING:</b> .....	<b>1</b>
<b>2017 ISP PROGRAM INDUSTRY TOTALS</b> .....	<b>7</b>
2017 FINAL REPORT (TABLE 1).....	7
5 YEAR SUMMARY REPORT (TABLE 2) .....	8
2017 - IADC INDUSTRY TOTALS (TABLE 3).....	9
<i>Total Industry LTI &amp; Recordable Incidence Rates vs Man-hours (Figure 1)</i> .....	9
<i>Total Industry Land LTI &amp; Recordable Incidence Rates vs Man-hours (Figure 2)</i> .....	10
<i>Total Industry Water LTI &amp; Recordable Incidence Rates vs Man-hours (Figure 3)</i> .....	10
<b>IADC 2017 TOTAL INDUSTRY CHARTS</b> .....	<b>11</b>
<i>Total Industry Lost Time Incidents by Month (Chart 1)</i> .....	11
<i>Total Industry Recordable Incidents by Month (Chart 2)</i> .....	12
<i>Total Industry Lost Time Incidents by Occupation (Chart 3)</i> .....	13
<i>Total Industry Recordable Incidents by Occupation (Chart 4)</i> .....	14
<i>Total Industry Lost Time Incidents by Body Part (Chart 5)</i> .....	15
<i>Total Industry Recordable Incidents by Body Part (Chart 6)</i> .....	16
<i>Total Industry Lost Time Incidents by Incident Type (Chart 7)</i> .....	17
<i>Total Industry Recordable Incidents by Incident Type (Chart 8)</i> .....	18
<i>Total Industry Lost Time Incidents by Equipment (Chart 9)</i> .....	19
<i>Total Industry Recordable Incidents by Equipment (Chart 10)</i> .....	20
<i>Total Industry Lost Time Incidents by Operation (Chart 11)</i> .....	21
<i>Total Industry Recordable Incidents by Operation (Chart 12)</i> .....	22
<i>Total Industry Lost Time Incidents by Location (Chart 13)</i> .....	23
<i>Total Industry Recordable Incidents by Location (Chart 14)</i> .....	24
<i>Total Industry Lost Time Incidents by Time in Service (Chart 15)</i> .....	25
<i>Total Industry Recordable Incidents by Time in Service (Chart 16)</i> .....	26
<i>Total Industry Lost Time Incidents by Time of Day (Chart 17)</i> .....	27
<i>Total Industry Recordable Incidents by Time of Day (Chart 18)</i> .....	28
<i>Total Industry Lost Time Incidents by Age (Chart 19)</i> .....	29
<i>Total Industry Recordable Incidents by Age (Chart 20)</i> .....	30
<b>2017 ISP PROGRAM REGIONAL TOTALS</b> .....	<b>31</b>
<i>IADC 2017 Africa Totals (Table 4)</i> .....	31
<i>Africa Total LTI &amp; Recordable Incidence Rates vs Man-hours (Figure 4)</i> .....	31
<i>IADC 2017 Asia Pacific Totals (Table 5)</i> .....	32
<i>Asia Pacific Total LTI &amp; Recordable Incidence Rates vs Man-hours (Figure 5)</i> .....	32
<i>IADC 2017 Australasia Totals (Table 6)</i> .....	33
<i>Australasia Total LTI &amp; Recordable Incidence Rates vs Man-hours (Figure 6)</i> .....	33
<i>IADC 2017 Canada Totals (Table 7)</i> .....	34
<i>Canada Total LTI &amp; Recordable Incidence Rates vs Man-hours (Figure 7)</i> .....	34
<i>IADC 2017 Central America &amp; Caribbean Totals (Table 8)</i> .....	35
<i>Central America &amp; Caribbean Total LTI &amp; Recordable Incidence Rates vs Man-hours (Figure 8)</i> .....	35
<i>IADC 2017 European Totals (Table 9)</i> .....	36
<i>European Total LTI &amp; Recordable Incidence Rates vs Man-hours (Figure 9)</i> .....	36
<i>IADC 2017 Middle East Totals (Table 10)</i> .....	37
<i>Middle East Total LTI &amp; Recordable Incidence Rates vs Man-hours (Figure 10)</i> .....	37
<i>IADC 2017 South American Totals (Table 11)</i> .....	38
<i>South America Total LTI &amp; Recordable Incidence Rates vs Man-hours (Figure 11)</i> .....	38
<i>IADC 2017 US Totals (Table 12)</i> .....	39
<i>US Total LTI &amp; Recordable Incidence Rates vs Man-hours (Figure 12)</i> .....	39

## Summary of Occupational Incidents Introductory Briefing:

**Data gathered in the IADC Incident Statistics Program (ISP) data base, shows that the oil and gas well drilling industry continues work toward reducing incidents on rigs. With the decrease in rig demand in 2017, the incidence rates increased slightly over 2016. Although IADC ISP calculates both Incidence rates and Frequency rates, this report is based on Incidence rates which are calculated on incidents per 200,000 man-hours.**

The Summary of Occupational Incidents (SOI) is compiled annually from data volunteered by drilling contractors worldwide to the IADC ISP Program. During 2017, 94 contractors participated in the ISP representing a total of 387,990,136 million man-hours worked. Contractors striving for safety improvement by participating in the ISP program reported 1,048 Recordable incidents, 304 Lost Time incidents including 10 fatalities.

### Regional Reporting

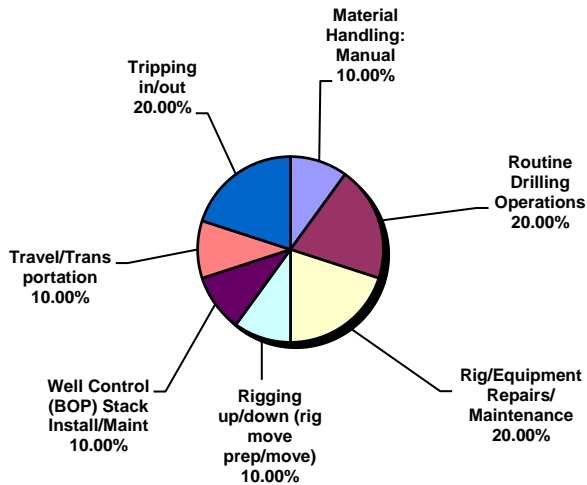
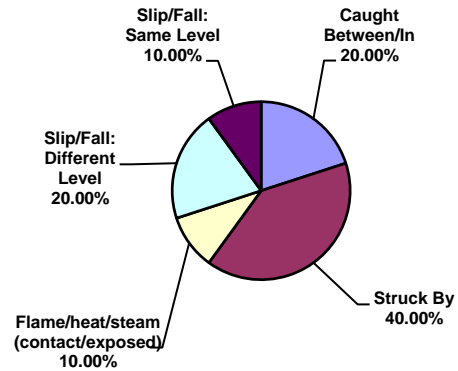
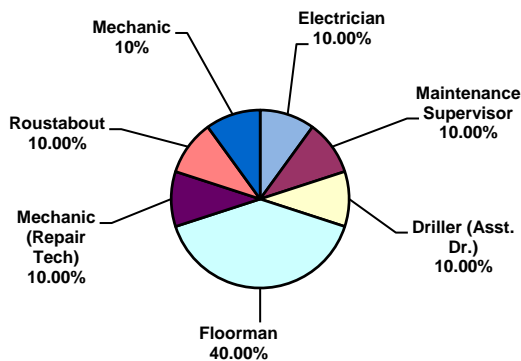
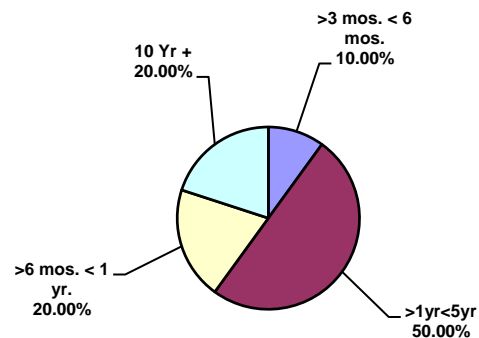
Safety data is compiled separately for Land and Offshore operations for nine geographic regions. This report is not designed to measure region against region, but to provide companies operating within each region tools to measure their efforts and make improvement in their safety efforts year over year.

### Industry Improvement

2017 saw the drilling industry's worldwide Lost Time Incidence Rate increase to 0.16 which is a 23.08% change of the 2016 report of 0.13. The 2017 Recordable Incident rate increased to 0.54 which is a 17.39% change over the 2016 report of 0.46. The oil and gas well drilling industry's efforts towards safety have resulted in the industry's occupational LTI Incidence rate to improve from more than 14.00 in 1963 to 0.16 in 2017, which is an 87.5 fold improvement.

### Fatalities:

In 2017 the industry's fatalities increased to 10 incidents compared to 9 incidents reported in 2016. According to the data reported in 2017, two (2) fatalities occurred to an employee who had ten or more years of service with the company. Five (5) fatalities occurred to employees who had more than one year but less than five years of service and one (1) with less than three months of service. Two (2) victims had worked for the company between six months and one year. Two (2) fatalities occurred during Rigging up/down. Four (4) victims were struck-by while two (2) were due to caught between incidents. Four (4) of the fatalities occurred to floormen.

**Fatal Incidents by activity**

**Fatal Incidents by type**

**Fatalities by Occupation**

**Fatalities by Time in Service**


### Regional Summaries: Man-Hours vs Fatalities

**European Land and Offshore** categories together worked more than 69.9 million man-hours in 2017 with four (4) fatalities. European offshore accounted for 25.6 million man-hours with one (1) fatality while European Land had 44 million man-hours and three (3) fatalities. **US Land and Offshore** contractors together worked more than 78 million man-hours with two (2) fatalities. US Land had 55 million man-hours with one (1) fatality while US water had 22.7 million man-hours and one (1) fatality. **Canadian** contractors accounted for 2.29 million man-hours and zero (0) fatalities. Canadian Land had 1 million man-hours and no fatalities while offshore had 1.2 million man-hours and no

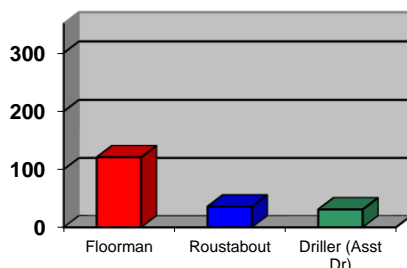
fatalities. **Central America and Caribbean** accounted for 4 million man-hours with zero (0) fatalities. Land operations reported 400 thousand man-hours and no fatalities while water operations reported just over 3.7 million man-hours and no fatalities. **Africa** combined land and offshore accounted for 29 million man-hours with zero (0) fatalities while Africa Land accounted for 15 million man-hours with zero (0) fatalities while Africa Water had 13.9 million man-hours and no fatalities. The **Middle East** region accounted for 135 million man-hours with four (4) fatalities. The Land division had 95.6 million man-hours and four (4) fatalities while there were 39.9 million man-hours and no fatalities for the offshore division. **Asia Pacific** accounted for 46 million man-hours and zero (0)

fatalities. Water had 35.6 million man-hours and no fatalities while the Land Division had 10 million man-hours with no fatalities. **South America** made up 18 million man-hours with no fatalities. Land had 9.5 million man-hours and no fatalities while Water had 8.8 million man-hours and no fatalities. **Australasia** made up 3.9 million man-hours with no fatalities. Land had 3 million man-hours with no fatalities while offshore had 600 thousand man-hours with no fatalities.

**Lost Time and Recordable Incidents by Region**

Lost time incidents among **US Offshore** workers worsened 22% from 0.09 in 2016 to 0.11 in 2017. The Total Recordable Incidence Rate improved 6.12% from 0.49 in 2016 to 0.46 in 2017. **US Land** LTI Incidence rate worsened 22.86% from 0.35 in 2016 to 0.43 in 2017 and Recordable Incidence Rate worsened 25% from 1.20 in 2016 to 1.50 in 2017. **European Land** workers saw their LTI rate worsen 23.5% from 0.17 for 2016 to 0.21 for 2017. The Recordable Incidence Rate worsened 26% from 0.23 in 2016 to 0.29 in 2017. **European Offshore** workers LTI rate worsened 25% from 0.12 in 2016 to 0.15 in 2017 while the Recordable Incidence rate improved 4% from 0.50 in 2016 to 0.48 in 2017. **Canada Land** had a 2016 LTI rate of 0.54 which improved 27.78% to 0.39 for 2017, while their Recordable Incidence improved 11.9% from 1.34 in 2016 to 1.18 for 2017. **Canada Offshore** workers saw their 2016 LTI rate of 0.0 increase to 0.16 for 2017. The Recordable Incidence rate of 0.26 for 2016 worsened 138% to 0.62 for 2017. **Central America and Caribbean Land** 2016 LTI rate of 0.55 improved 9% to 0.50 for 2017. Their 2016 Recordable Incidence rate of 1.64 improved 69.5% to 0.50 for 2017. **Central America and Caribbean Water** 2016 LTI Rate of 0.11 worsened 236% to 0.37 in 2017. The Recordable rate of 0.33 for 2016 worsened 218% to 1.05 for 2017. **Africa Land** LTI rate for 2016 was 0.11, worsened 27% for 0.14 in 2017.

**LTI by Occupation**  
(Based on 303 incidents)

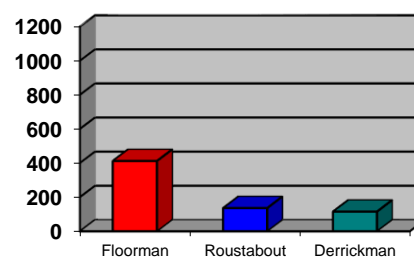


The Recordable Incidence rate worsened 33% from 0.39 in 2016 to 0.52 in 2017. **Africa Water** LTI rate of 0.01 for 2016 worsened 500% to 0.06 for 2017 and their Recordable Incidence rate worsened 45% from 0.20 in 2016 to 0.29 in 2017. In 2016, **Middle East Land** had a LTI rate of 0.13 which improved 30.7% to 0.09 in 2017. Their 2016 Recordable Incidence rate of 0.49 improved 22.45% to 0.38 in 2017. **Middle East Water** LTI rate of 0.05 in 2016 worsened 20% to 0.06 in 2017 and their Recordable Incidence rate worsened 30.77% from 0.26 in 2016 to 0.34 in 2017. **Asia Pacific Land** 2016 LTI rate was 0.07 and improved 71.4% to 0.02 in 2017, while their Recordable Incidence rate improved 22.2% from 0.18 in 2016 to 0.14 in 2017. **Asia Pacific Water** 2016 LTI rate of 0.11 improved 36% to 0.07 for 2017 and their Recordable Incidence rate improved 26.67% from 0.30 in 2016 to 0.22 in 2017. In 2016, **South America Land** had an LTI rate of 0.27 which improved 7.4% to 0.25 in 2017 and a 2016 Recordable rate of 0.71 which worsened 18% to 0.84 in 2017. **South America Water** 2016 LTI rate was 0.10 which worsened 100% to 0.20 in 2017 and a 2016 Recordable rate of 0.34 that improved 20.59% to 0.27 in 2017. **Australasia Land** had a 2016 LTI rate of 0.00 which increased to 0.18 for 2017 and Recordable incident rate of 0.48 for 2016 which worsened 12.5% to 0.54 for 2017. **Australasia Water** had a 2016 LTI rate of 0.00 which increased to 0.61 for 2017 and a 2016 Recordable incident rate of 0.48 which worsened 216% to 1.52 for 2017.

**Greatest Risks:**

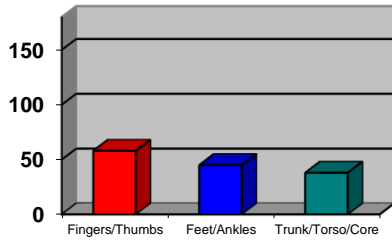
Incidents occur in many places around the rig and to all crewmembers. Many types of equipment and rig operations are involved in incidents and all parts of the body are at risk. Incident data are analyzed by occupation, body part, incident type, equipment type, operation, location time in service and time of day the incident occurred.

**REC by Occupation**  
(Based on 1039 incidents)

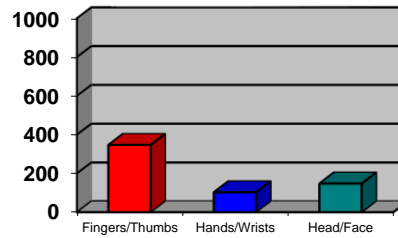


Data from the IADC ISP show that of all the categories, as with previous years, the Floorman position suffers the largest percentage of Lost Time and Recordable injuries.

**LTI by Body Part**  
(Based on 303 incidents)

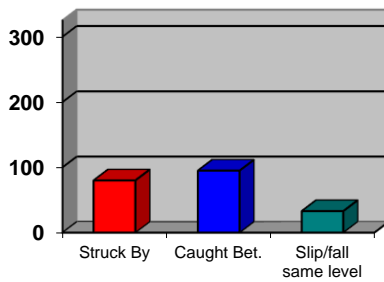


**REC by Body Part**  
(Based on 1038 incidents)

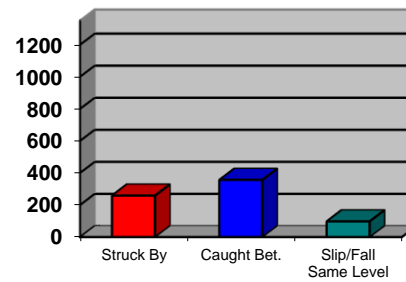


Fingers remained the most vulnerable part of the body.

**LTI by Incident Type**  
(Based on 299 incidents)

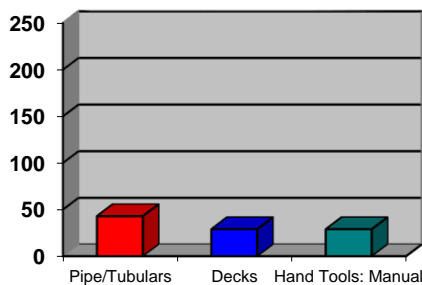


**REC by Incident Type**  
(Based on 1033 incidents)

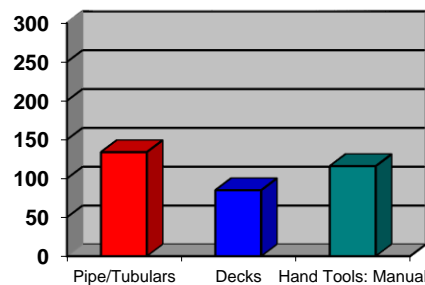


Caught Between accounted for most Lost Time and Recordable injuries and was closely followed by Struck by injuries.

**LTI by Equipment**  
(Based on 294 incidents)

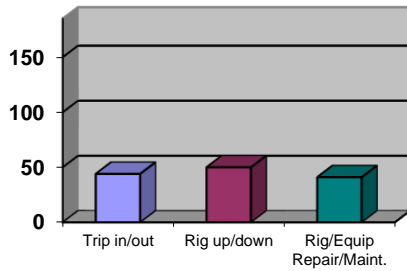


**REC by Equipment**  
(Based on 1005 incidents)

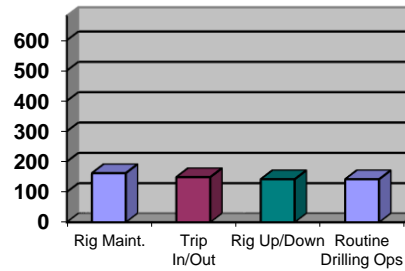


Pipe/Tubulars is the equipment responsible for the most Lost Time and Recordable incidents.

**LTI by Activity**  
(Based on 302 incidents)

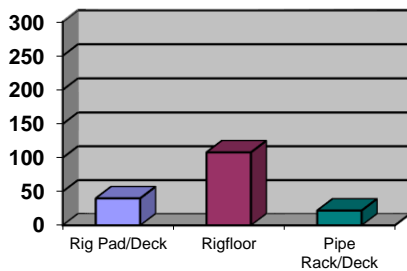


**REC by Activity**  
(Based on 1031 incidents)

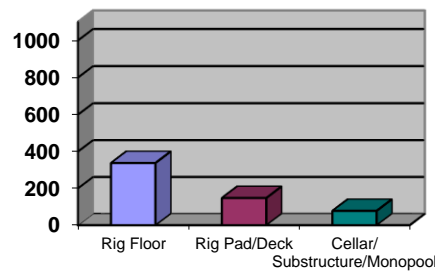


“Rigging up/down” accounted for the most LTI. The most recordable incidents occurred during “Rig/Equipment Repair/Maintenance”.

**LTI by Location**  
(Based on 301 incidents)

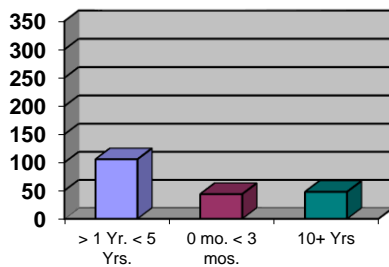


**REC by Location**  
(Based on 1036 incidents)

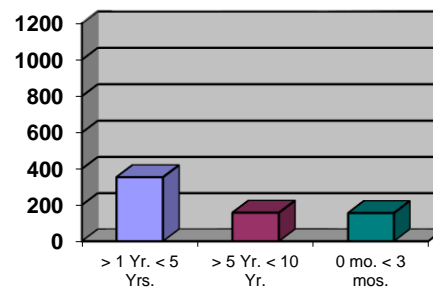


The most Lost Time and Recordable injuries in drilling operations occur on the rig floor.

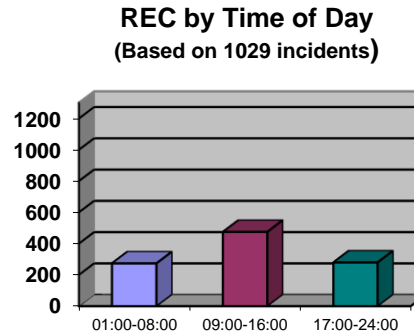
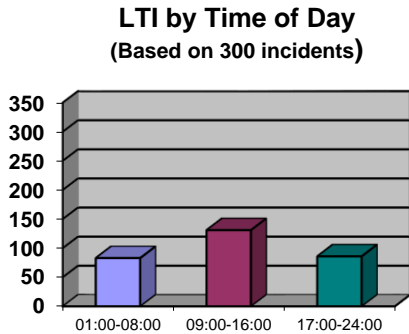
**LTI by Time In Service**  
(Based on 302 incidents)



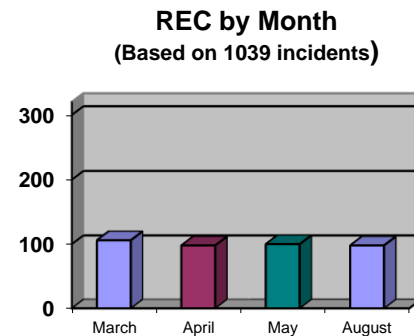
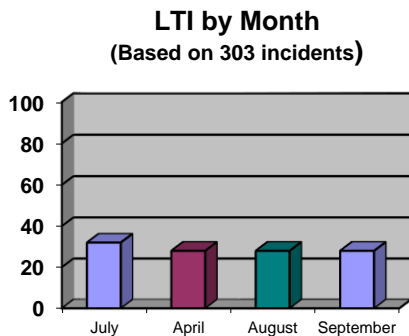
**REC by Time In Service**  
(Based on 1031 incidents)



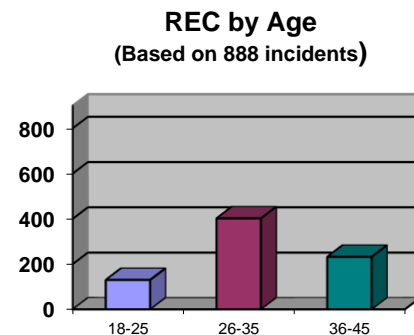
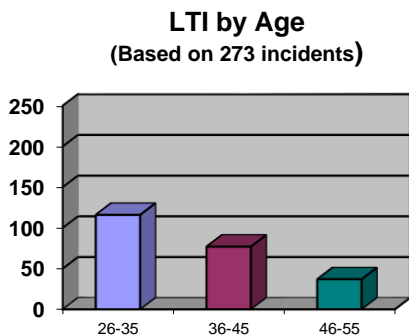
Lost Time and Recordable injuries based on Time in Service were led by employees with between one to five years of service.



The Most LTI and Recordable incidents occurred between 09:00-16:00 hours.



July accounted for the most Lost Time and March accounted for the most Recordable incidents.



26 – 35 age range accounted for the most Lost Time and Recordable incidents.

**Conclusion:**

Activity in most sectors of the industry decreased in 2017. Overall, Lost Time incidents rates and Recordable incident rates increased slightly in 2017 as compared to 2016, an increase attributable to regions which experienced an uptick in rig activity. The industry also saw the number of fatalities increase by 1.





## 2017 ISP Program Industry Totals

### IADC ISP Program 2017 Final Report (Table 1)

January – December

Note: Figures are unaudited

CATEGORY	TOTAL MANHOURS	TOTAL MTOs	TOTAL RWCs	TOTAL LTIs	TOTAL FTLs	TOTAL RCRD	LTI INCD. RATE	LTI FREQ. RATE	DART INCD. RATE	DART FREQ. RATE	RCRD INCD. RATE	RCRD FREQ. RATE
US - Land	55,488,587	164	135	117	1	417	0.43	2.13	0.91	4.56	1.50	7.52
US - Water	22,777,018	23	17	11	1	52	0.11	0.53	0.25	1.27	0.46	2.28
Canada - Land	1,016,078	2	2	2	0	6	0.39	1.97	0.79	3.94	1.18	5.91
Canada - Water	1,280,874	1	2	1	0	4	0.16	0.78	0.47	2.34	0.62	3.12
Central America & Caribbean - Land	400,688	0	0	1	0	1	0.50	2.50	0.50	2.50	0.50	2.50
Central America & Caribbean - Water	3,796,094	8	5	7	0	20	0.37	1.84	0.63	3.16	1.05	5.27
European - Land	44,274,793	10	8	43	3	64	0.21	1.04	0.24	1.22	0.29	1.45
European - Water	25,681,274	28	15	18	1	62	0.15	0.74	0.26	1.32	0.48	2.41
Africa - Land	15,447,105	21	8	11	0	40	0.14	0.71	0.25	1.23	0.52	2.59
Africa - Water	13,944,560	9	7	4	0	20	0.06	0.29	0.16	0.79	0.29	1.43
Middle East - Land	95,628,447	73	66	38	4	181	0.09	0.44	0.23	1.13	0.38	1.89
Middle East - Water	39,906,727	25	31	12	0	68	0.06	0.30	0.22	1.08	0.34	1.70
Asia Pacific - Land	10,325,025	4	2	1	0	7	0.02	0.10	0.06	0.29	0.14	0.68
Asia Pacific - Water	35,689,082	13	15	12	0	40	0.07	0.34	0.15	0.76	0.22	1.12
South America Land	9,518,345	12	16	12	0	40	0.25	1.26	0.59	2.94	0.84	4.20
South America Water	8,824,098	3	0	9	0	12	0.20	1.02	0.20	1.02	0.27	1.36
Australasia – Land	3,331,859	3	3	3	0	9	0.18	0.90	0.36	1.80	0.54	2.70
Australasia – Water	659,482	2	1	2	0	5	0.61	3.03	0.91	4.55	1.52	7.58
<b>US Combined</b>	<b>78,265,605</b>	<b>187</b>	<b>152</b>	<b>128</b>	<b>2</b>	<b>469</b>	<b>0.33</b>	<b>1.66</b>	<b>0.72</b>	<b>3.60</b>	<b>1.20</b>	<b>5.99</b>
<b>Canada Combined</b>	<b>2,296,952</b>	<b>3</b>	<b>4</b>	<b>3</b>	<b>0</b>	<b>10</b>	<b>0.26</b>	<b>1.31</b>	<b>0.61</b>	<b>3.05</b>	<b>0.87</b>	<b>4.35</b>
<b>Central America &amp; Caribbean Com.</b>	<b>4,196,782</b>	<b>8</b>	<b>5</b>	<b>8</b>	<b>0</b>	<b>21</b>	<b>0.38</b>	<b>1.91</b>	<b>0.62</b>	<b>3.10</b>	<b>1.00</b>	<b>5.00</b>
<b>European Combined</b>	<b>69,956,067</b>	<b>38</b>	<b>23</b>	<b>61</b>	<b>4</b>	<b>126</b>	<b>0.19</b>	<b>0.93</b>	<b>0.25</b>	<b>1.26</b>	<b>0.36</b>	<b>1.80</b>
<b>Africa Combined</b>	<b>29,391,665</b>	<b>30</b>	<b>15</b>	<b>15</b>	<b>0</b>	<b>60</b>	<b>0.10</b>	<b>0.51</b>	<b>0.20</b>	<b>1.02</b>	<b>0.41</b>	<b>2.04</b>
<b>Middle East Combined</b>	<b>135,535,174</b>	<b>98</b>	<b>97</b>	<b>50</b>	<b>4</b>	<b>249</b>	<b>0.08</b>	<b>0.40</b>	<b>0.22</b>	<b>1.11</b>	<b>0.37</b>	<b>1.84</b>
<b>Asia Pacific Combined</b>	<b>46,014,107</b>	<b>17</b>	<b>17</b>	<b>13</b>	<b>0</b>	<b>47</b>	<b>0.06</b>	<b>0.28</b>	<b>0.13</b>	<b>0.65</b>	<b>0.20</b>	<b>1.02</b>
<b>South America Combined</b>	<b>18,342,443</b>	<b>15</b>	<b>16</b>	<b>21</b>	<b>0</b>	<b>52</b>	<b>0.23</b>	<b>1.14</b>	<b>0.40</b>	<b>2.02</b>	<b>0.57</b>	<b>2.83</b>
<b>Australasia Combined</b>	<b>3,991,341</b>	<b>5</b>	<b>4</b>	<b>5</b>	<b>0</b>	<b>14</b>	<b>0.25</b>	<b>1.25</b>	<b>0.45</b>	<b>2.25</b>	<b>0.70</b>	<b>3.51</b>
<b>INDUSTRY TOTAL</b>	<b>387,990,136</b>	<b>401</b>	<b>333</b>	<b>304</b>	<b>10</b>	<b>1,048</b>	<b>0.16</b>	<b>0.81</b>	<b>0.33</b>	<b>1.67</b>	<b>0.51</b>	<b>2.70</b>

MTO=Medical Treatment Only	INCD = Incidence Rate (200,000 man-hours) :	$LTI\ INCD\ Rate = (LTI\ s + FTLs) * 200000 / Total\ Man\ hours$ $DART\ INCD\ Rate = (RWC + LTI + FTL) * 200000 / Total\ Man\ hours$ $RCRD\ INCD\ Rate = (MTOs + RWCs + LTIs + FTLs) * 200000 / Total\ Man\ hours$
RWC =Restricted Work Case		
LTI =Lost Time Incident	FREQ = Frequency Rate (1,000,000 man-hours):	$LTI\ FREQ\ Rate = (LTI\ s + FTLs) * 1000000 / Total\ Man\ hours$ $DART\ FREQ\ Rate = (RWC + LTI + FTL) * 1000000 / Total\ Man\ hours$ $RCRD\ FREQ\ Rate = (MTOs + RWCs + LTIs + FTLs) * 1000000 / Total\ Man\ hours$
FTL =Fatalities		
RCRD =Total Recordables		

**IADC ISP Program  
5 Year Summary Report (Table 2)  
Lost Time and Total Recordable Incidence/Frequency Rate**

CATEGORIES	TYPE	2017		2016		2015		2014		2013	
		INCD Rate	FREQ Rate	INCD Rate	FRE Q Rate	INCD Rate	FREQ Rate	INCD Rate	FRE Q Rate	INCD Rate	FREQ Rate
US Land	LTI:	0.43	2.13	0.35	1.74	0.31	1.55	0.41	2.07	0.51	2.54
	DART:	0.91	4.56	0.78	3.89	0.72	3.58	0.93	4.67	0.96	4.81
	RCRD:	1.50	7.52	1.20	5.98	1.22	6.10	1.54	7.72	1.58	7.92
US Water	LTI:	0.11	0.53	0.09	0.43	0.12	0.61	0.14	0.71	0.15	0.74
	DART:	0.25	1.27	0.30	1.48	0.35	1.77	0.32	1.60	0.45	2.24
	RCRD:	0.46	2.28	0.49	2.45	0.56	2.82	0.64	3.19	0.78	3.91
Canada Land	LTI:	0.39	1.97	0.54	2.68	0.14	0.68	0.29	1.46	0.61	3.05
	DART:	0.79	3.94	1.34	6.70	0.41	2.04	0.73	3.64	0.76	3.82
	RCRD:	1.18	5.91	1.34	6.70	1.36	6.79	2.33	11.66	1.98	9.92
Canada Water	LTI:	0.16	0.78	0.00	0.00	0.00	0.00	0.00	0.00	0.00	0.00
	DART:	0.47	2.34	0.26	1.29	0.53	2.67	0.42	2.09	0.24	1.20
	RCRD:	0.62	3.12	0.26	1.29	0.80	4.01	0.70	3.49	0.24	1.20
Central America & Caribbean Land	LTI:	0.50	2.50	0.55	2.73	0.98	4.92	0.43	2.16	0.27	1.37
	DART:	0.50	2.50	1.09	5.46	1.09	5.47	0.48	2.39	0.46	2.28
	RCRD:	0.50	2.50	1.64	8.19	1.59	7.93	0.65	3.23	0.64	3.20
Central America & Caribbean Water	LTI:	0.37	1.84	0.11	0.55	0.18	0.90	0.34	1.68	0.22	1.11
	DART:	0.63	3.16	0.28	1.38	0.43	2.16	0.45	2.24	0.37	1.86
	RCRD:	1.05	5.27	0.33	1.65	0.61	3.05	0.90	4.48	0.54	2.72
South America Land	LTI:	0.25	1.26	0.27	1.35	0.25	1.25	0.19	0.97	0.16	0.79
	DART:	0.59	2.94	0.59	2.94	0.55	2.73	0.42	2.10	0.37	1.84
	RCRD:	0.84	4.20	0.71	3.53	0.72	3.62	0.54	2.69	0.51	2.54
South America Water	LTI:	0.20	1.02	0.10	0.50	0.22	1.09	0.26	1.28	0.27	1.33
	DART:	0.20	1.02	0.20	1.01	0.40	1.98	0.38	1.92	0.48	2.38
	RCRD:	0.27	1.36	0.34	1.68	0.52	2.60	0.54	2.71	0.66	3.29
European Land	LTI:	0.21	1.04	0.17	0.84	0.15	0.75	0.24	1.18	0.34	1.69
	DART:	0.24	1.22	0.19	0.97	0.18	0.89	0.30	1.50	0.39	1.94
	RCRD:	0.29	1.45	0.23	1.14	0.23	1.14	0.35	1.77	0.48	2.39
European Water	LTI:	0.15	0.74	0.12	0.60	0.19	0.93	0.19	0.97	0.27	1.34
	DART:	0.26	1.32	0.25	1.26	0.40	2.02	0.39	1.93	0.44	2.20
	RCRD:	0.48	2.41	0.50	2.52	0.63	3.17	0.73	3.64	0.85	4.24
Africa Land	LTI:	0.14	0.71	0.11	0.56	0.39	1.95	0.32	1.59	0.38	1.92
	DART:	0.25	1.23	0.20	1.01	0.94	4.71	0.86	4.28	0.86	4.32
	RCRD:	0.52	2.59	0.39	1.96	1.16	5.78	1.04	5.18	1.07	5.36
Africa Water	LTI:	0.06	0.29	0.01	0.05	0.09	0.47	0.18	0.89	0.16	0.81
	DART:	0.16	0.79	0.11	0.55	0.22	1.11	0.41	2.06	0.30	1.48
	RCRD:	0.29	1.43	0.20	0.99	0.34	1.72	0.65	3.26	0.52	2.61
Middle East Land	LTI:	0.09	0.44	0.13	0.64	0.14	0.69	0.14	0.68	0.14	0.72
	DART:	0.23	1.13	0.24	1.20	0.32	1.59	0.32	1.59	0.39	1.95
	RCRD:	0.38	1.89	0.49	2.44	0.60	2.98	0.54	2.70	0.65	3.23
Middle East Water	LTI:	0.06	0.30	0.05	0.27	0.10	0.48	0.08	0.42	0.08	0.39
	DART:	0.22	1.08	0.18	0.91	0.22	1.12	0.26	1.29	0.22	1.10
	RCRD:	0.34	1.70	0.26	1.30	0.31	1.55	0.35	1.74	0.29	1.47
Asia Pacific Land	LTI:	0.02	0.10	0.07	0.33	0.11	0.53	0.24	1.18	0.22	1.08
	DART:	0.06	0.29	0.11	0.55	0.19	0.93	0.31	1.53	0.58	2.89
	RCRD:	0.14	0.68	0.18	0.89	0.34	1.69	0.45	2.27	0.94	4.70
Asia Pacific Water	LTI:	0.07	0.34	0.11	0.55	0.05	0.27	0.15	0.73	0.15	0.76
	DART:	0.15	0.76	0.18	0.90	0.12	0.61	0.30	1.48	0.35	1.73
	RCRD:	0.22	1.12	0.30	1.51	0.23	1.17	0.40	2.02	0.54	2.72
Australasia Land	LTI:	0.18	0.90	0.00	0.00	0.15	0.75	0.23	1.17	For Australasia data prior to 2014 contact IADC	
	DART:	0.36	1.80	0.48	2.40	0.23	1.13	0.70	3.50		
	RCRD:	0.54	2.70	0.48	2.40	0.53	2.63	1.37	6.83		
Australasia Water	LTI:	0.61	3.03	0.00	0.00	0.10	0.50	0.06	0.30		
	DART:	0.91	4.55	0.16	0.79	0.45	2.25	0.43	2.13		
	RCRD:	1.52	7.58	0.48	2.38	0.55	2.75	0.61	3.05		
INDUSTRY TOTALS	LTI:	0.16	0.81	0.13	0.66	0.18	0.88	0.23	1.14	0.26	1.29
	DART:	0.33	1.67	0.28	1.39	0.38	1.92	0.48	2.41	0.52	2.576
	RCRD:	0.54	2.70	0.46	2.29	0.60	3.02	0.75	3.76	0.81	4.03

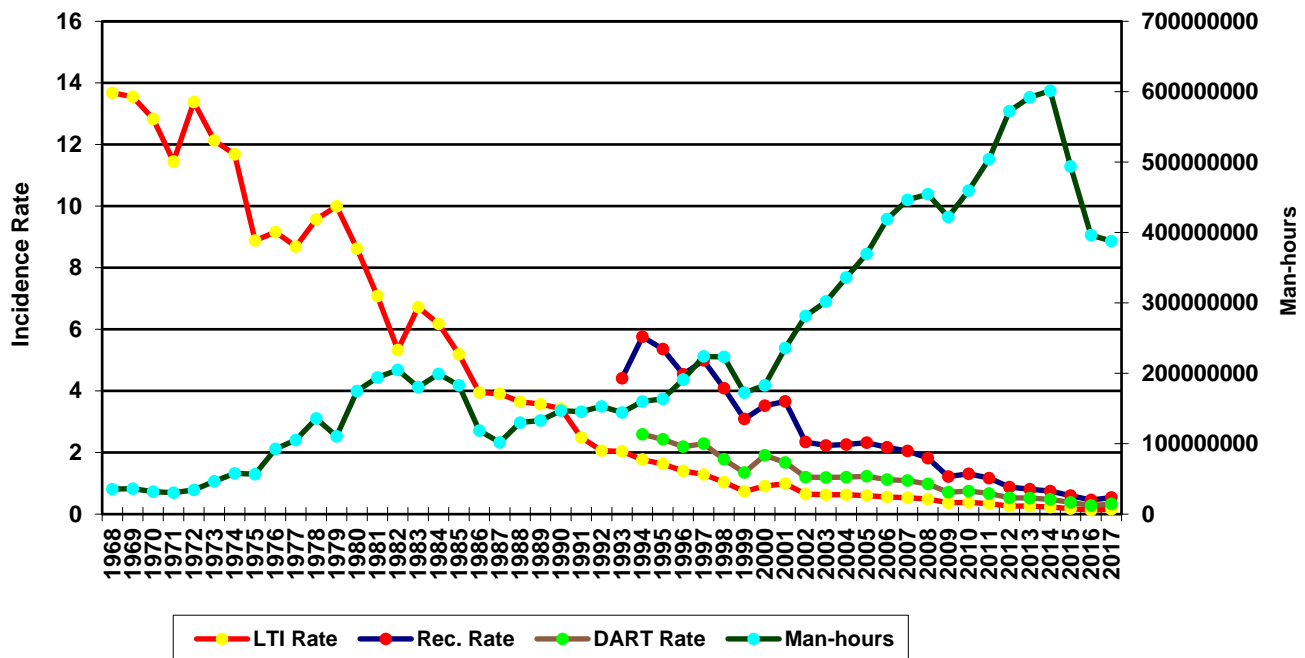
## 2017 - IADC INDUSTRY TOTALS (Table 3)

	LAND	WATER	COMBINED
<b>TOTAL MANHOURS</b>	235,430,927	152,559,209	387,990,136
<b>TOTAL MEDICAL TREATMENT INCIDENTS</b>	289	112	401
<b>TOTAL RESTRICTED WORK INCIDENTS</b>	240	93	333
<b>TOTAL LOST TIME INCIDENTS</b>	228	76	304
<b>TOTAL FATALITIES</b>	8	2	10
<b>TOTAL RECORDABLES</b>	765	283	1,048
<b>MTO INCIDENCE RATE</b>	0.25	0.15	0.21
<b>RWC INCIDENCE RATE</b>	0.20	0.12	0.17
<b>LTI INCIDENCE RATE</b>	0.20	0.10	0.16
<b>LTI FREQUENCY RATE</b>	1.00	0.51	0.81
<b>DART INCIDENCE RATE</b>	0.40	0.22	0.33
<b>DART FREQUENCY RATE</b>	2.02	1.12	1.667
<b>RECORDABLE INCIDENCE RATE</b>	0.65	0.37	0.54
<b>RECORDABLE FREQUENCY RATE</b>	3.25	1.86	2.70

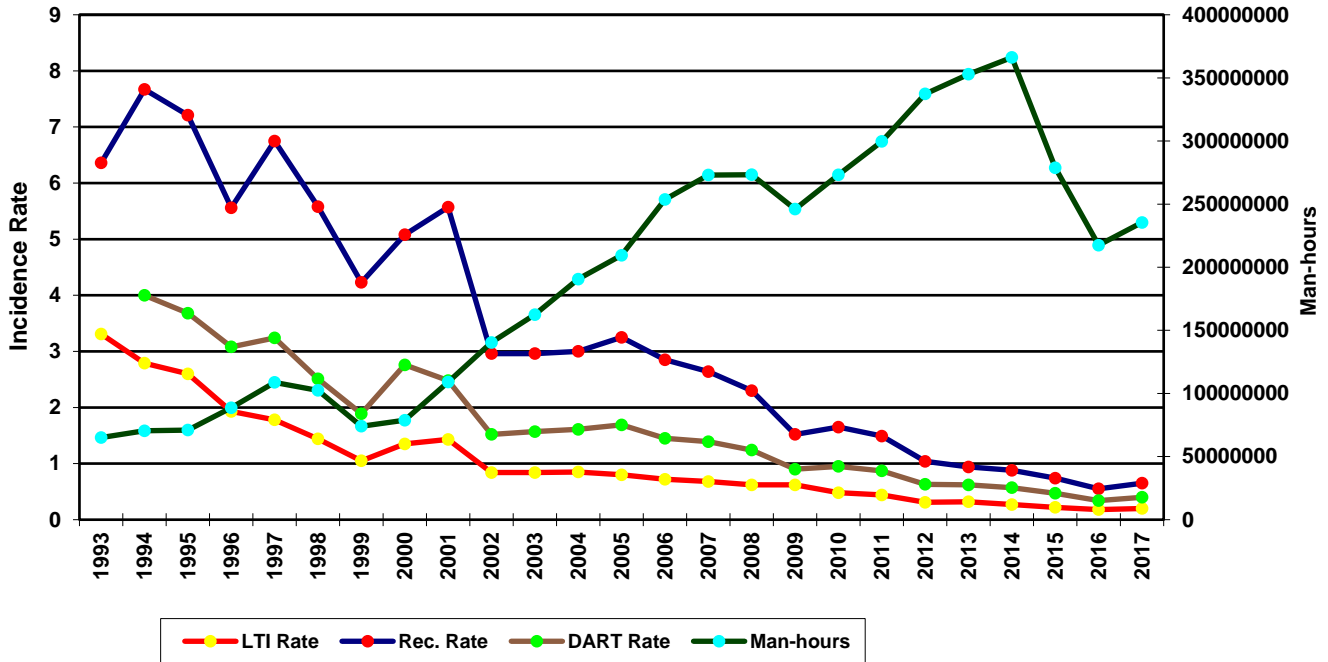
MEDICAL TREATMENT INCIDENCE RATE = MTOs X 200,000 / MAN-HOURS (LTIs NOT INCLUDED)  
 RESTRICTED WORK INCIDENCE RATE = RWCs X 200,000 / MAN-HOURS (LTIs NOT INCLUDED)  
 LOST TIME INCIDENCE RATE = (LTIs+FTLs) X 200,000 / MAN-HOURS  
 LOST TIME FREQUENCY RATE = (LTIs+FTLs) X 1,000,000 / MAN-HOURS  
 DART INCIDENCE RATE - (LTIs+FTLs+RWCs) X 200,000 / MAN-HOURS  
 DART INCIDENCE RATE - (LTIs+FTLs+RWCs) X 1,000,000 / MAN-HOURS  
 RECORDABLE INCIDENCE RATE = RECORDABLES X 200,000 / MAN-HOURS  
 RECORDABLE FREQUENCY RATE = RECORDABLES X 1,000,000 / MAN-HOURS

Number of participating companies: 94 – Total; 61 – Land; 50 – Water

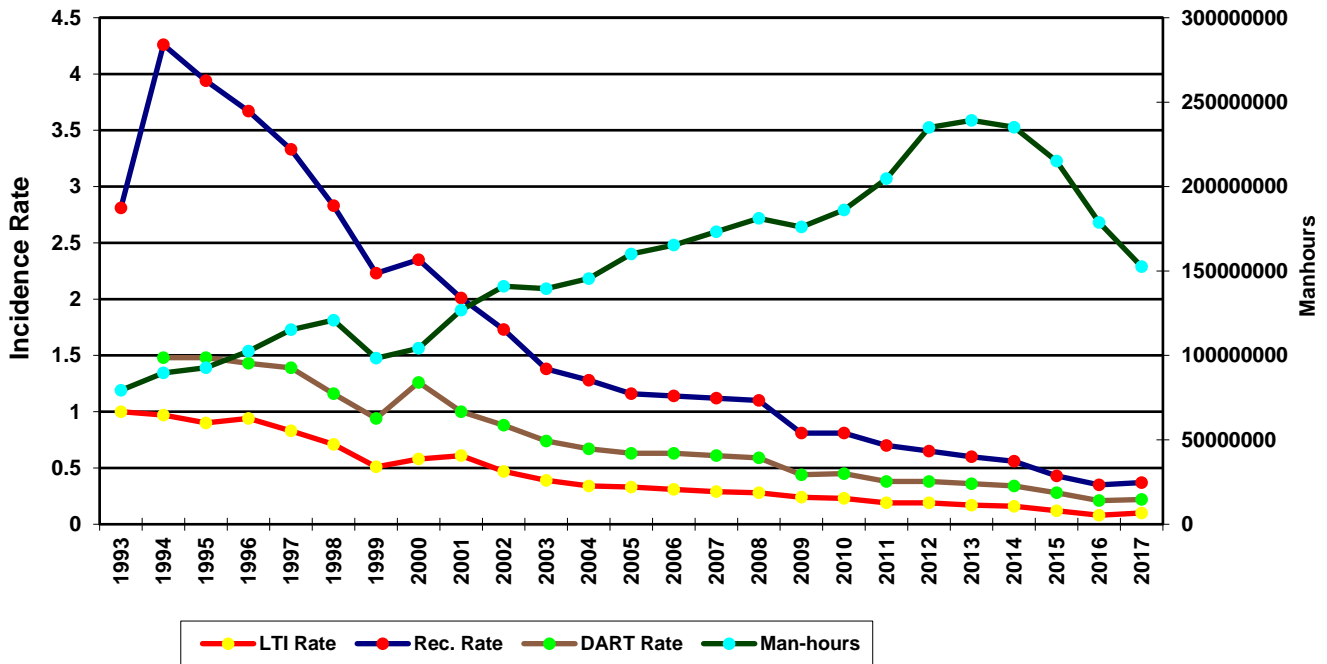
**Total Industry LTI & Recordable Incidence Rates vs Man-hours (Figure 1)**



Total Industry Land LTI & Recordable Incidence Rates vs Man-hours (Figure 2)



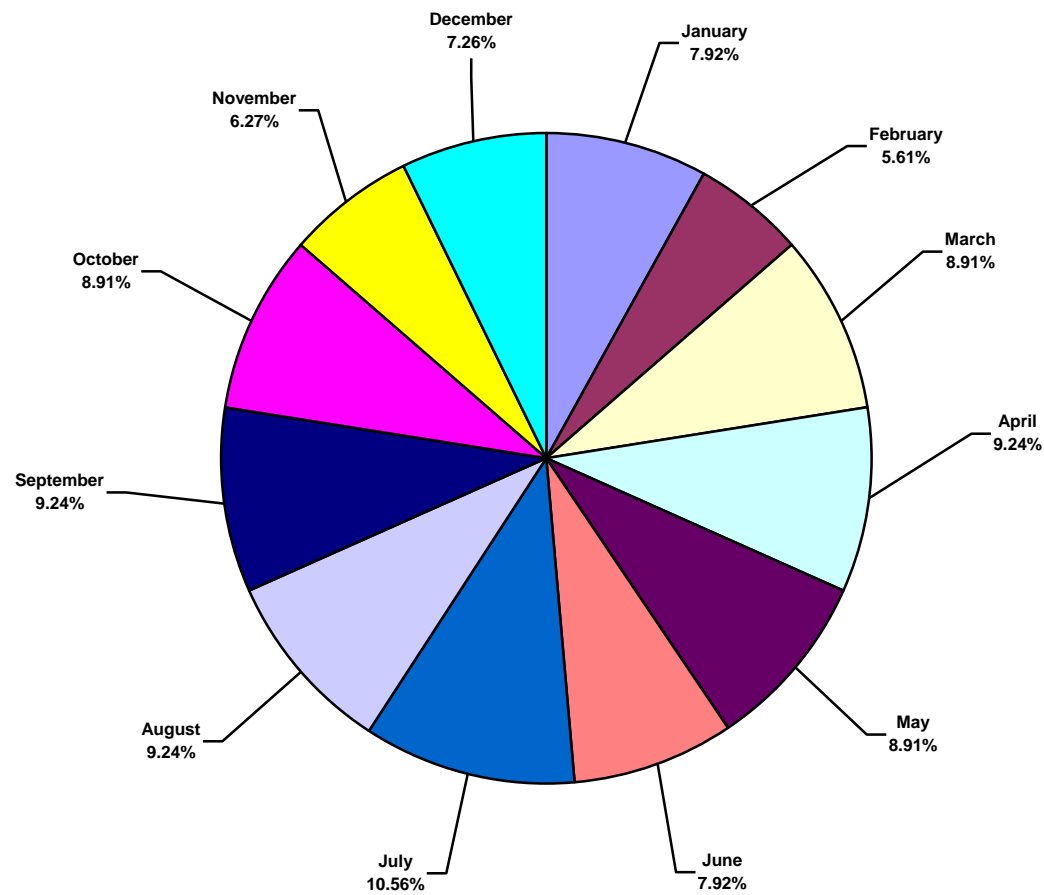
Total Industry Water LTI & Recordable Incidence Rates vs Man-hours (Figure 3)



## IADC 2017 Total Industry Charts

### Total Industry Lost Time Incidents by Month (Chart 1)

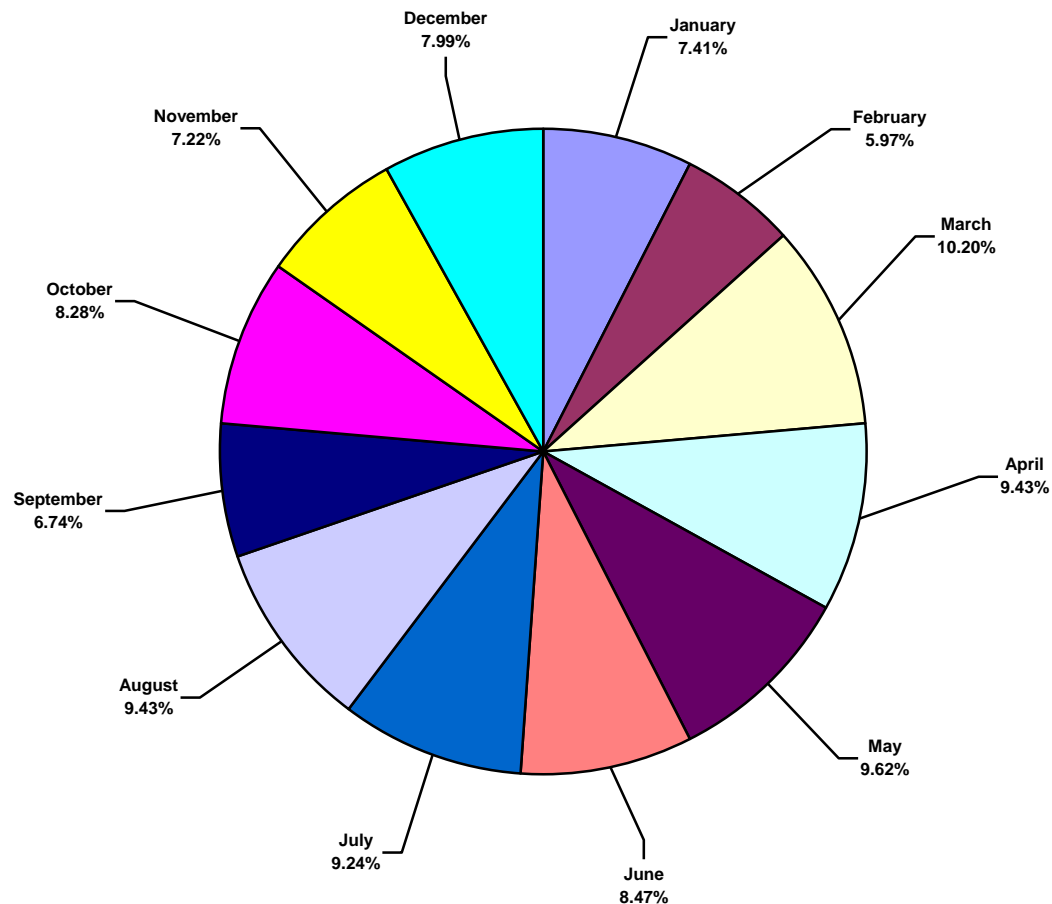
Based on 303 Incidents



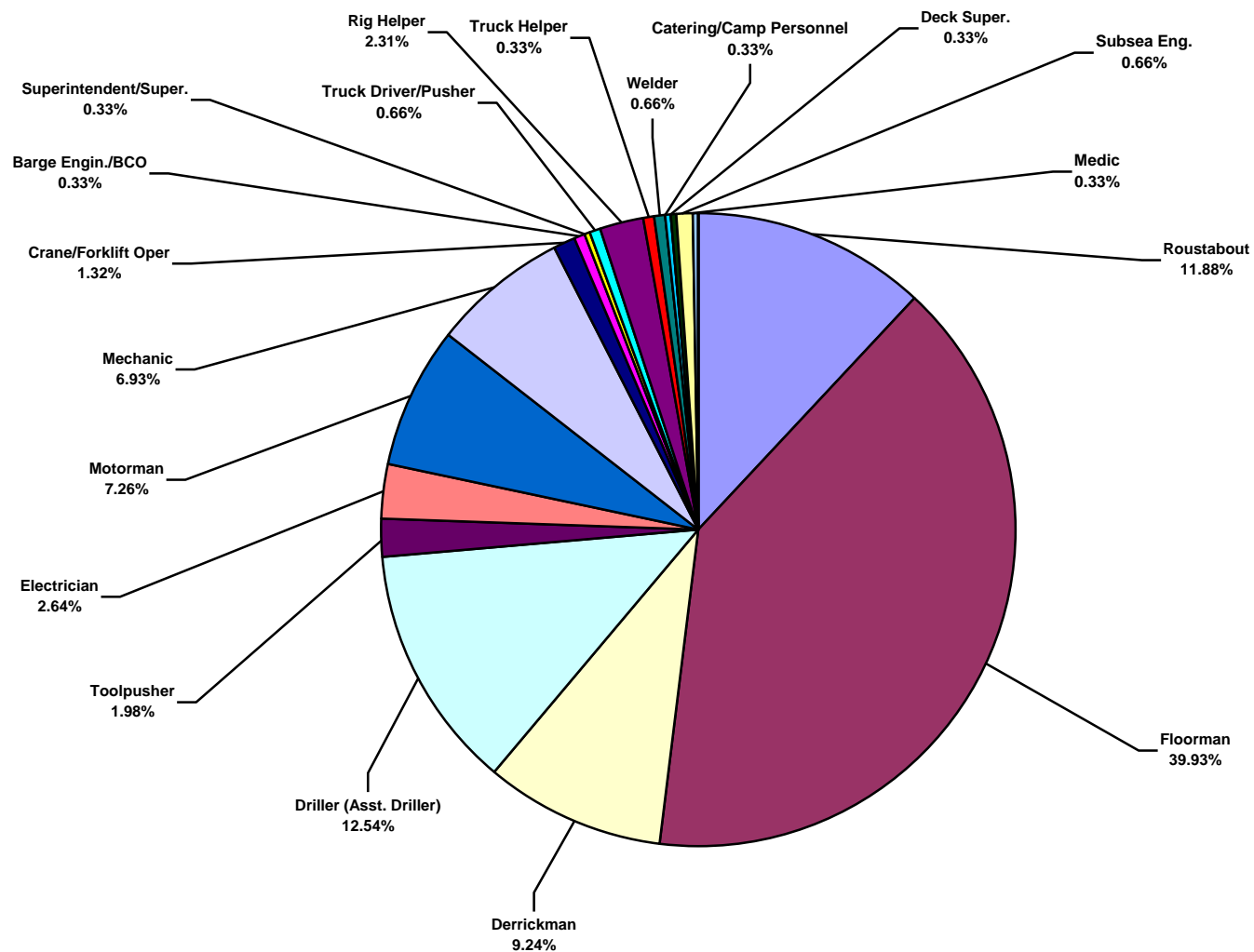
### Total Industry Recordable Incidents by Month (Chart 2)

Based on 1039 Incidents

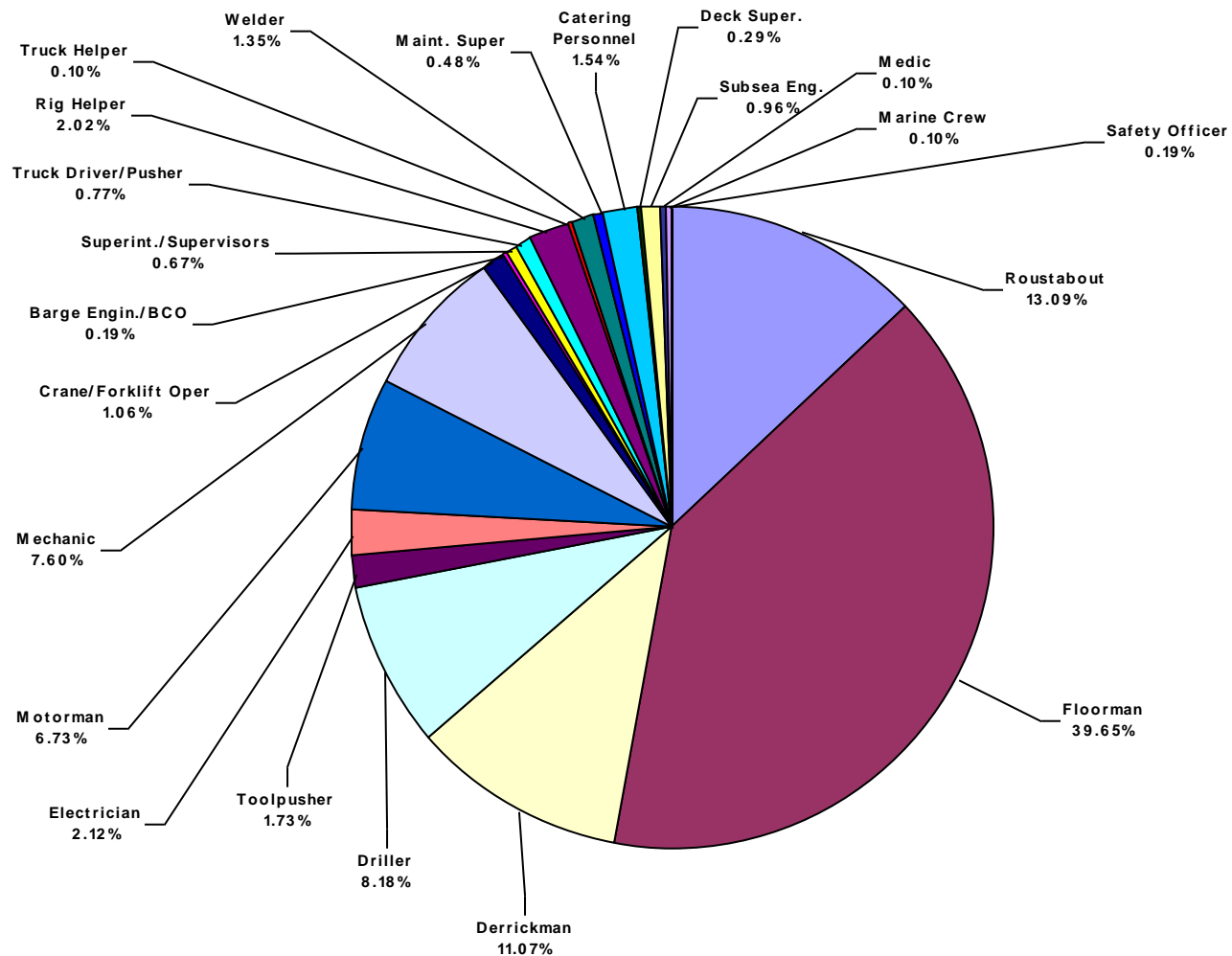
Note: Some pie charts may not appear to show all the slices due to the small percentage the slice represents.



**Total Industry Lost Time Incidents by Occupation (Chart 3)**  
Based on 303 Incidents

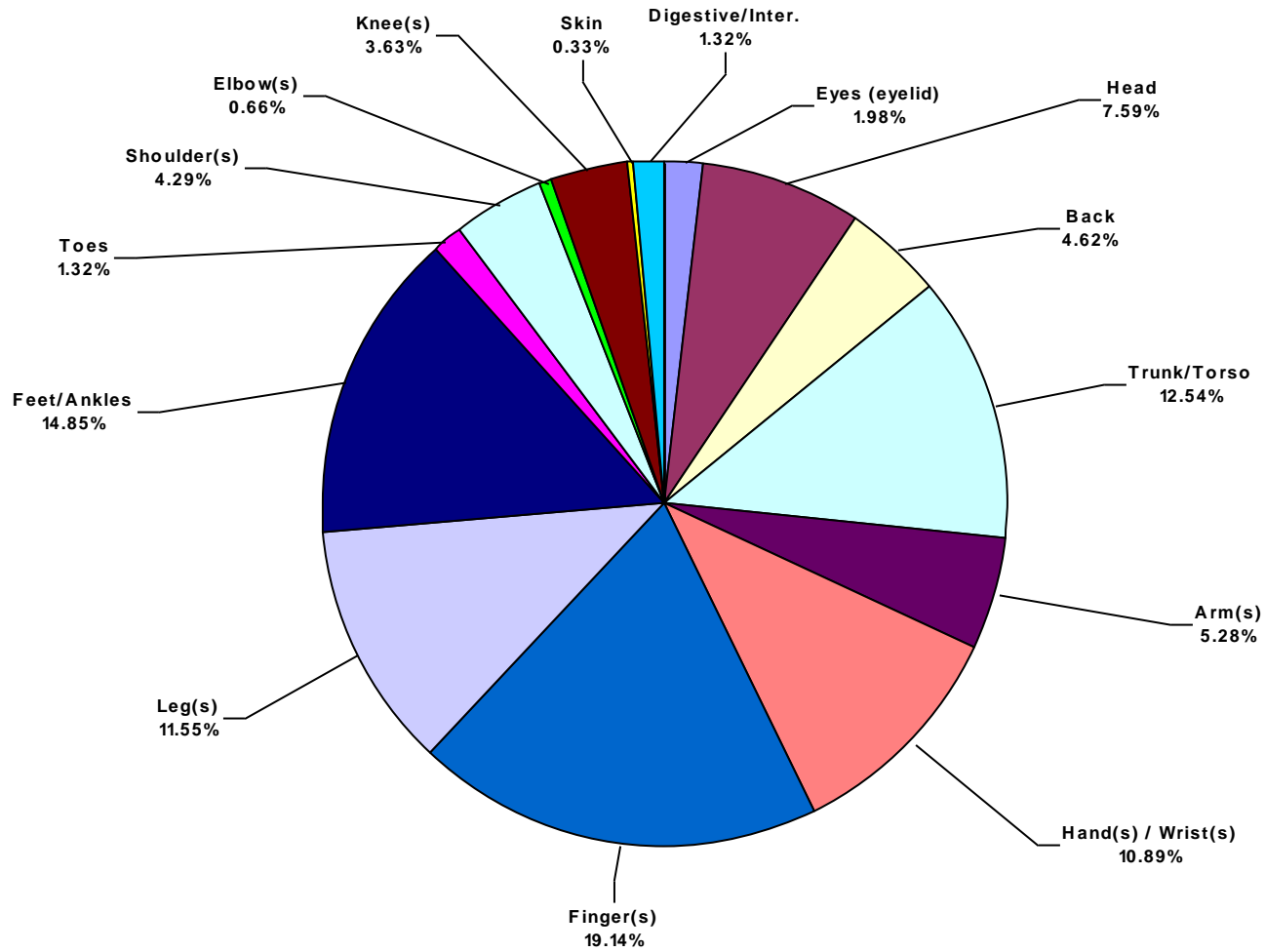


**Total Industry Recordable Incidents by Occupation (Chart 4)**  
Based on 1039 Incidents

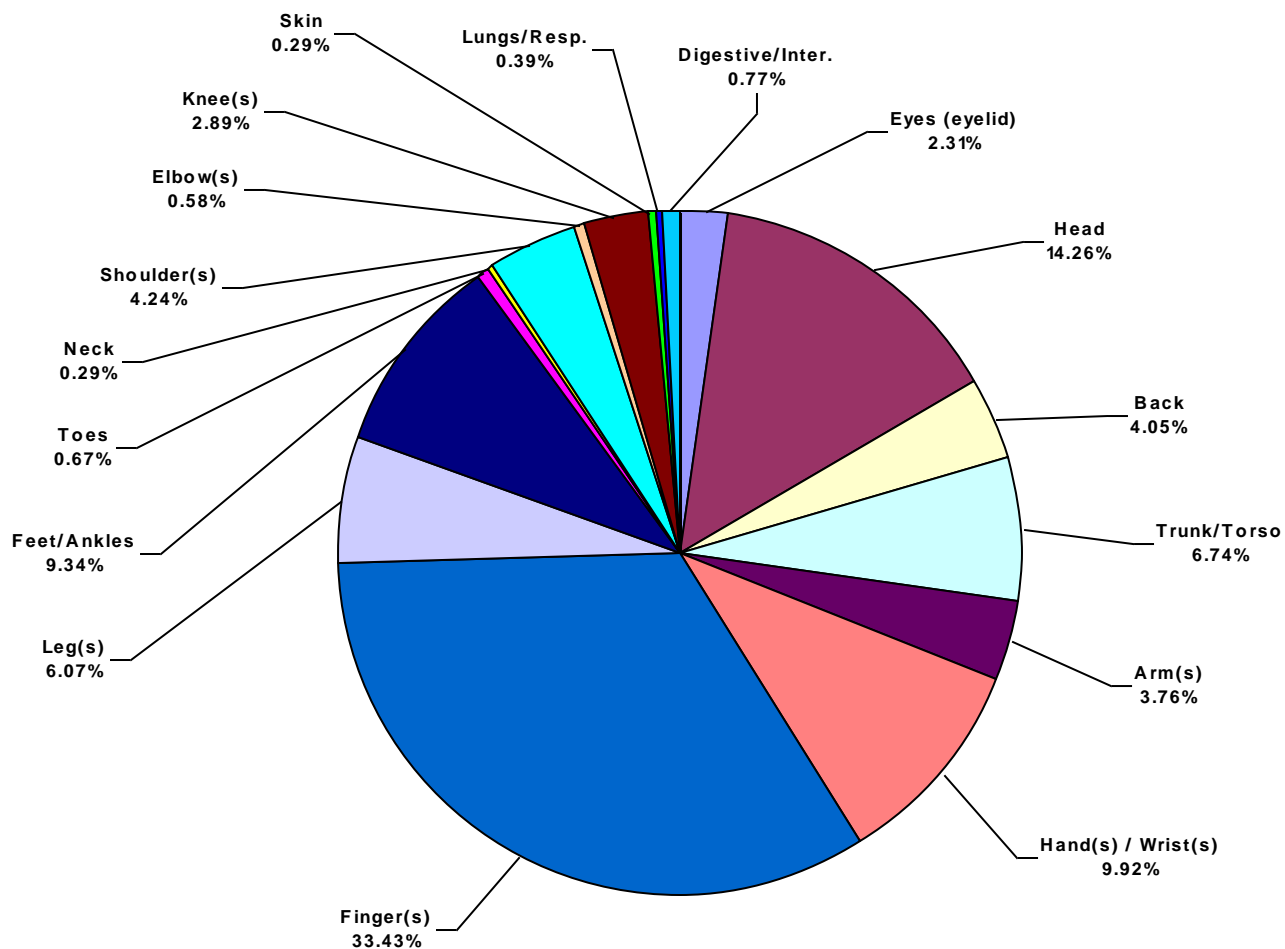




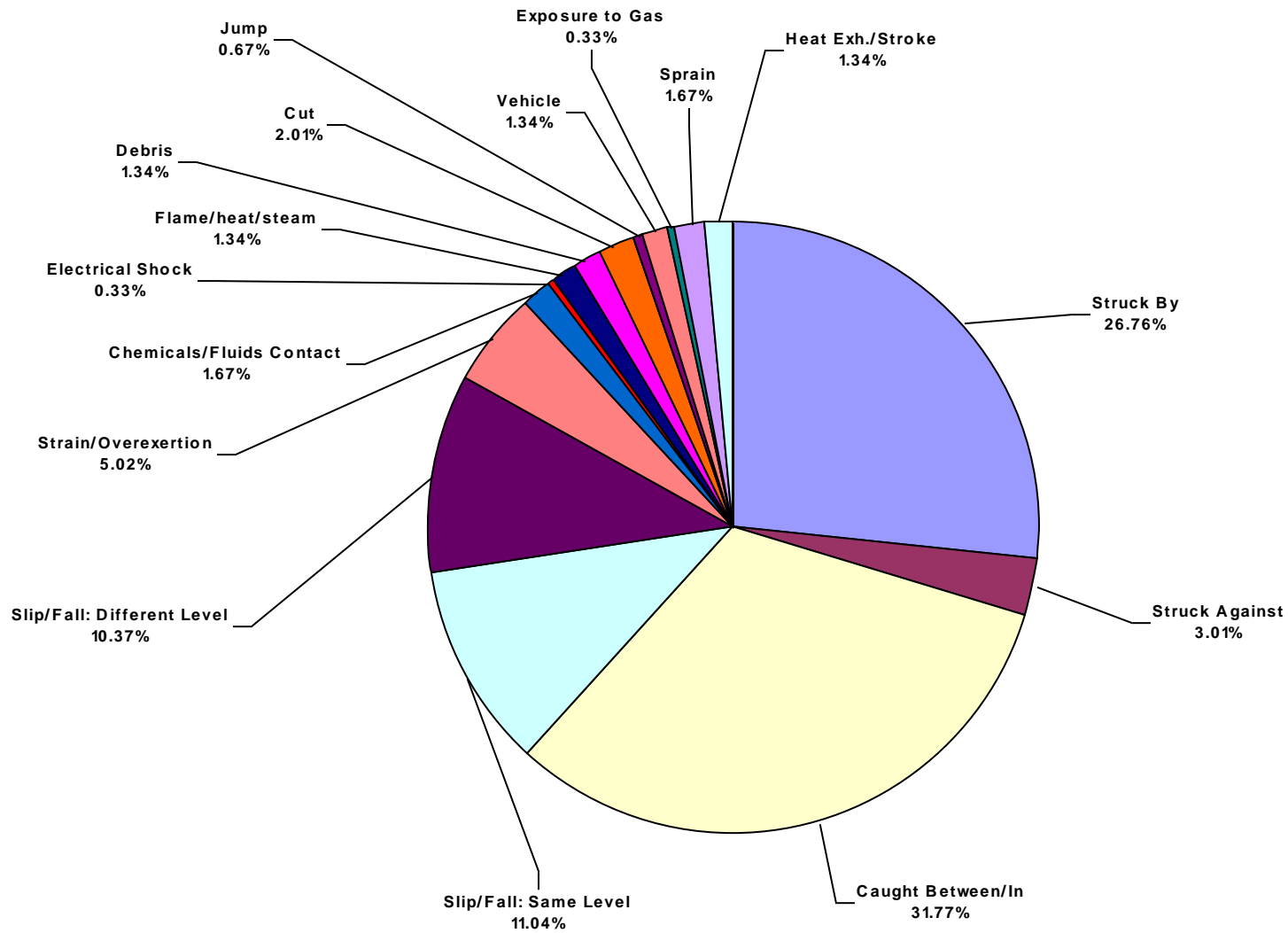
**Total Industry Lost Time Incidents by Body Part (Chart 5)**  
Based on 303 Incidents



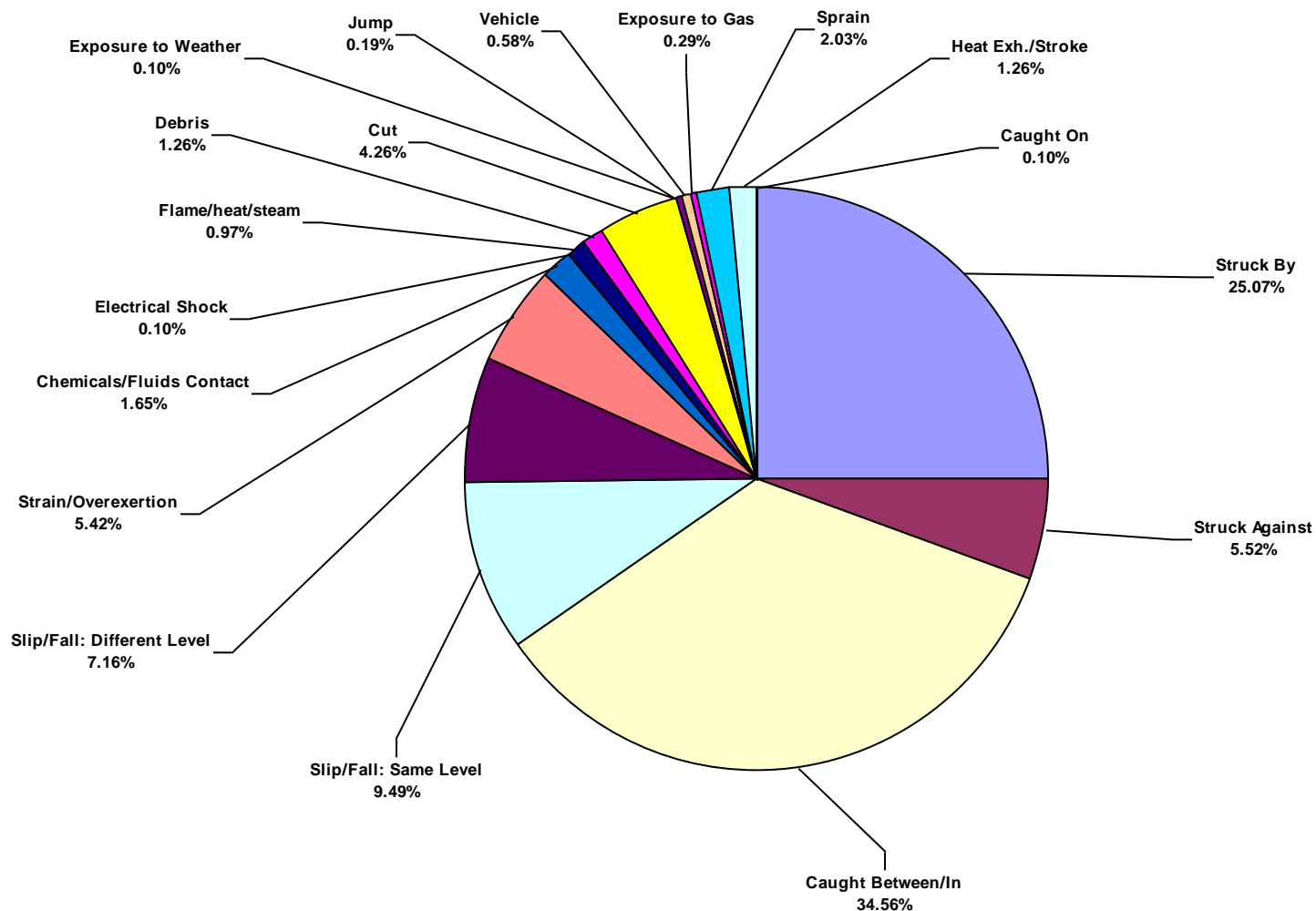
**Total Industry Recordable Incidents by Body Part (Chart 6)**  
Based on 1038 Incidents



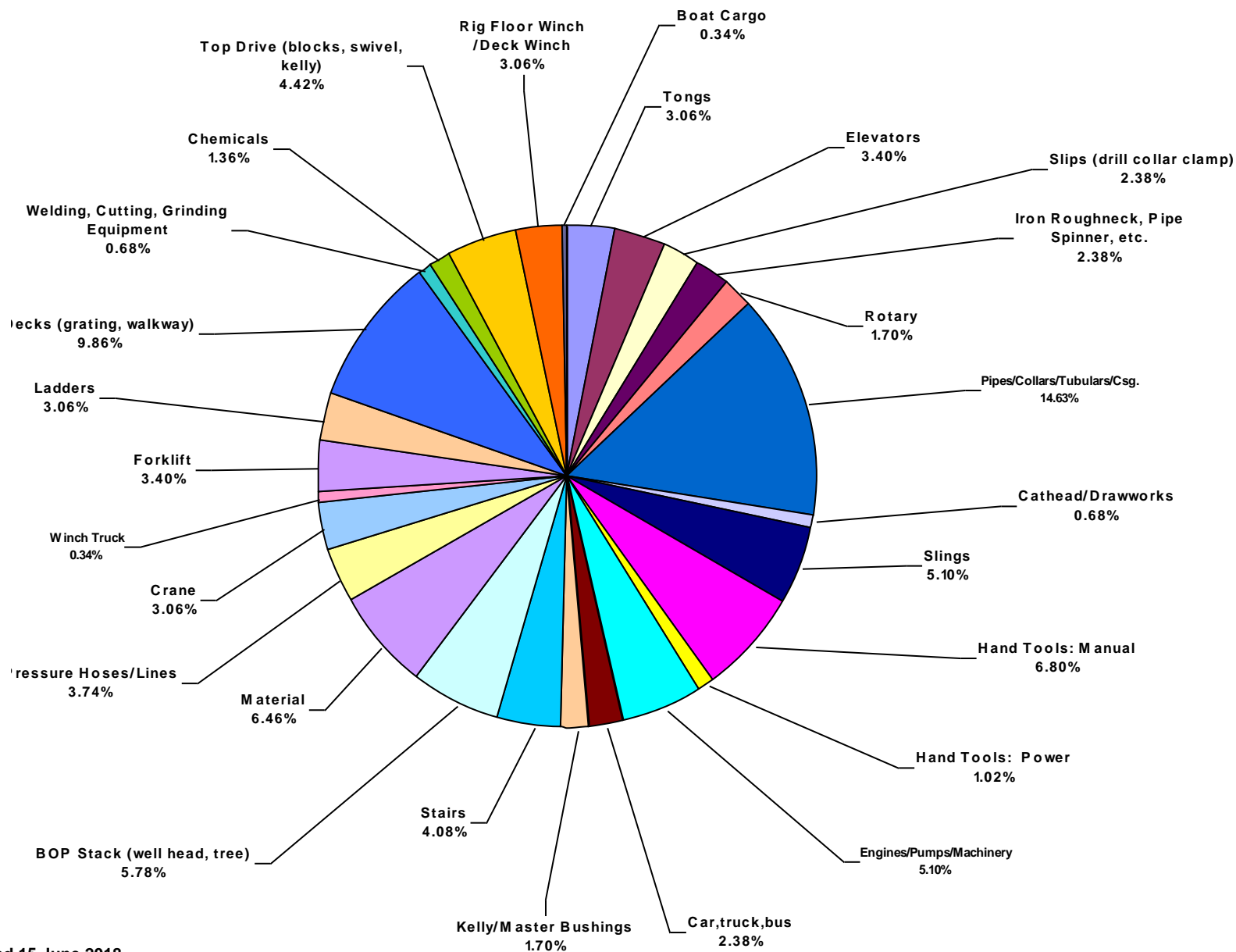
**Total Industry Lost Time Incidents by Incident Type (Chart 7)**  
Based on 299 Incidents



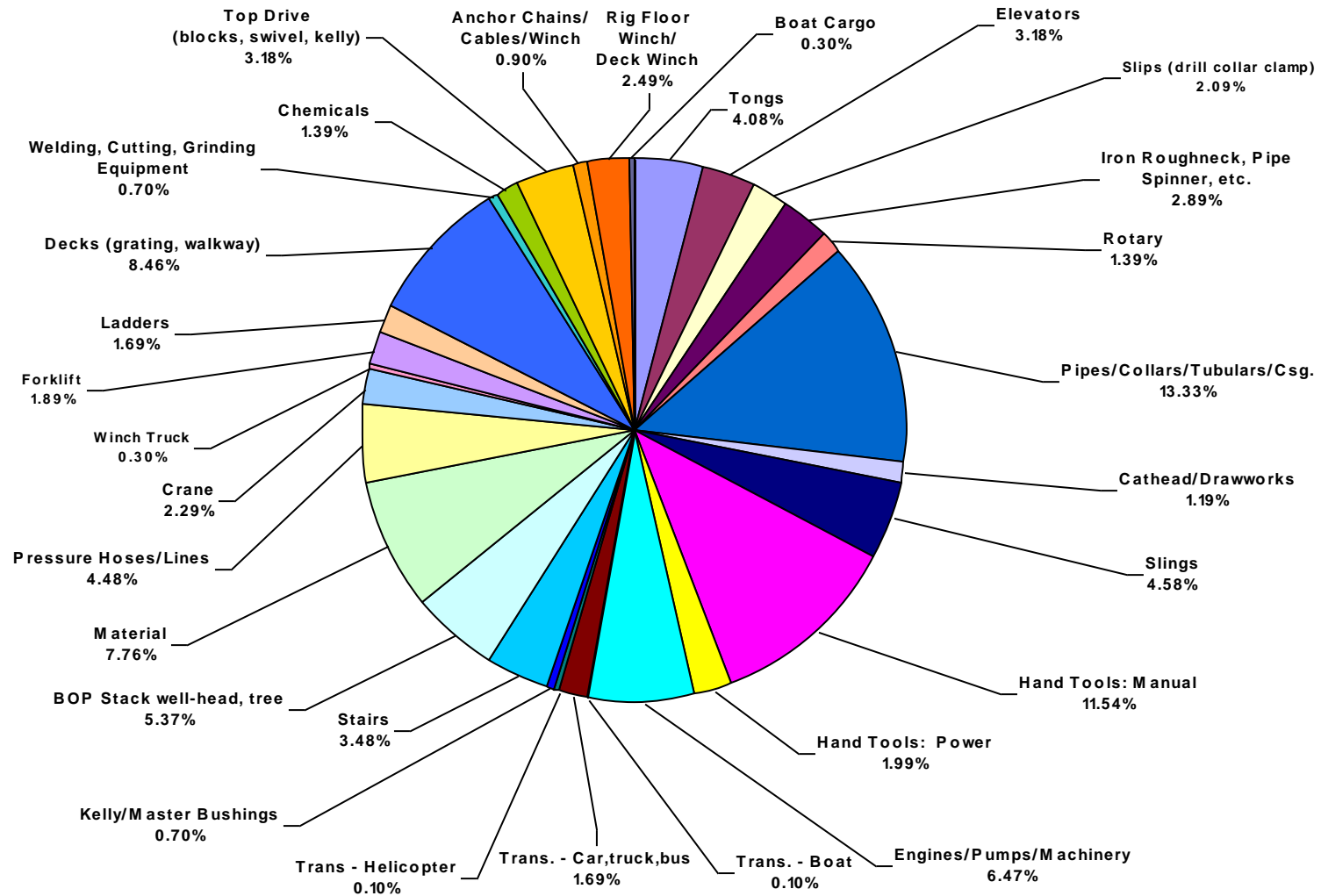
**Total Industry Recordable Incidents by Incident Type (Chart 8)**  
Based on 1033 Incidents



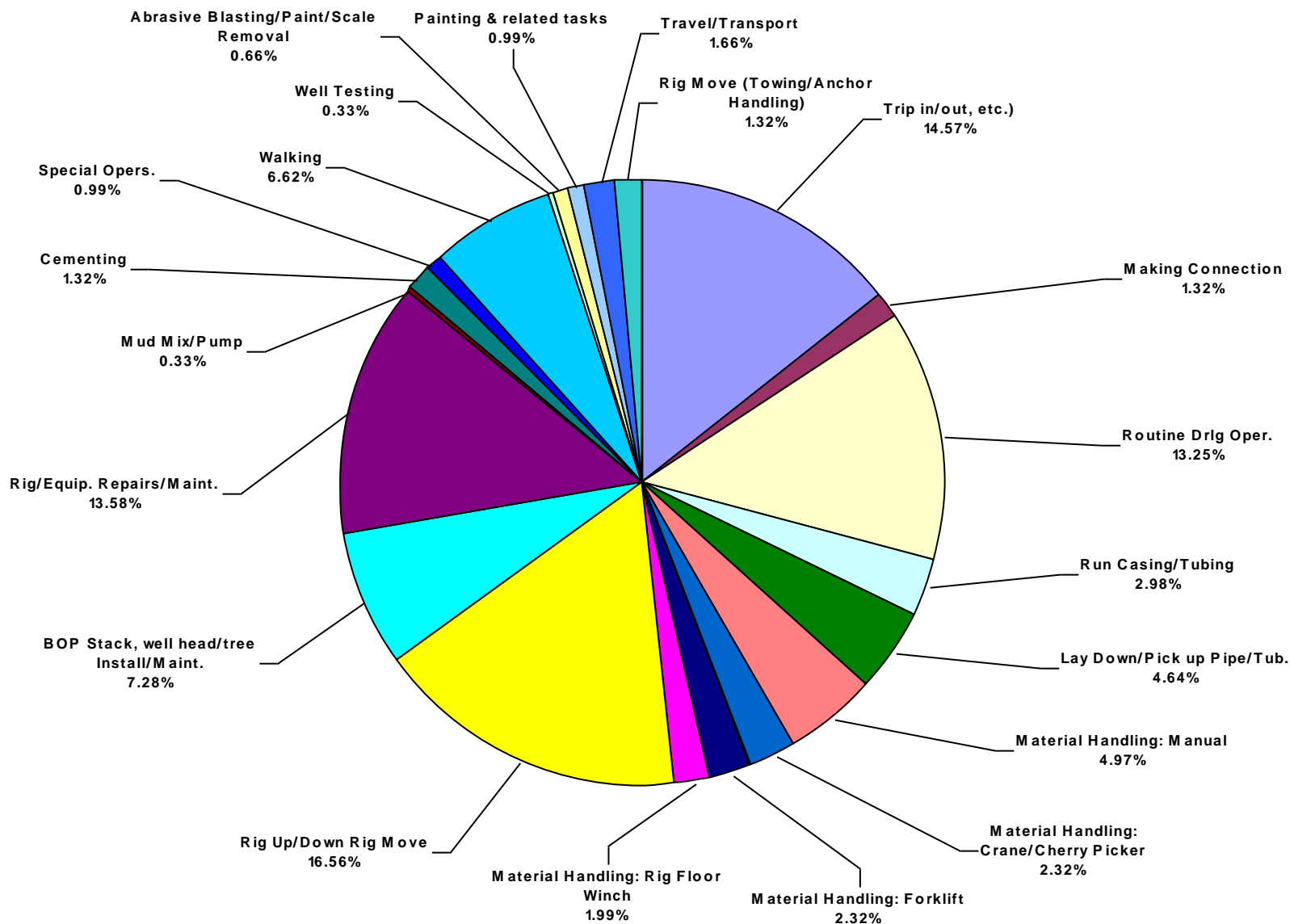
**Total Industry Lost Time Incidents by Equipment (Chart 9)**  
Based on 294 Incidents



**Total Industry Recordable Incidents by Equipment (Chart 10)**  
Based on 1005 Incidents

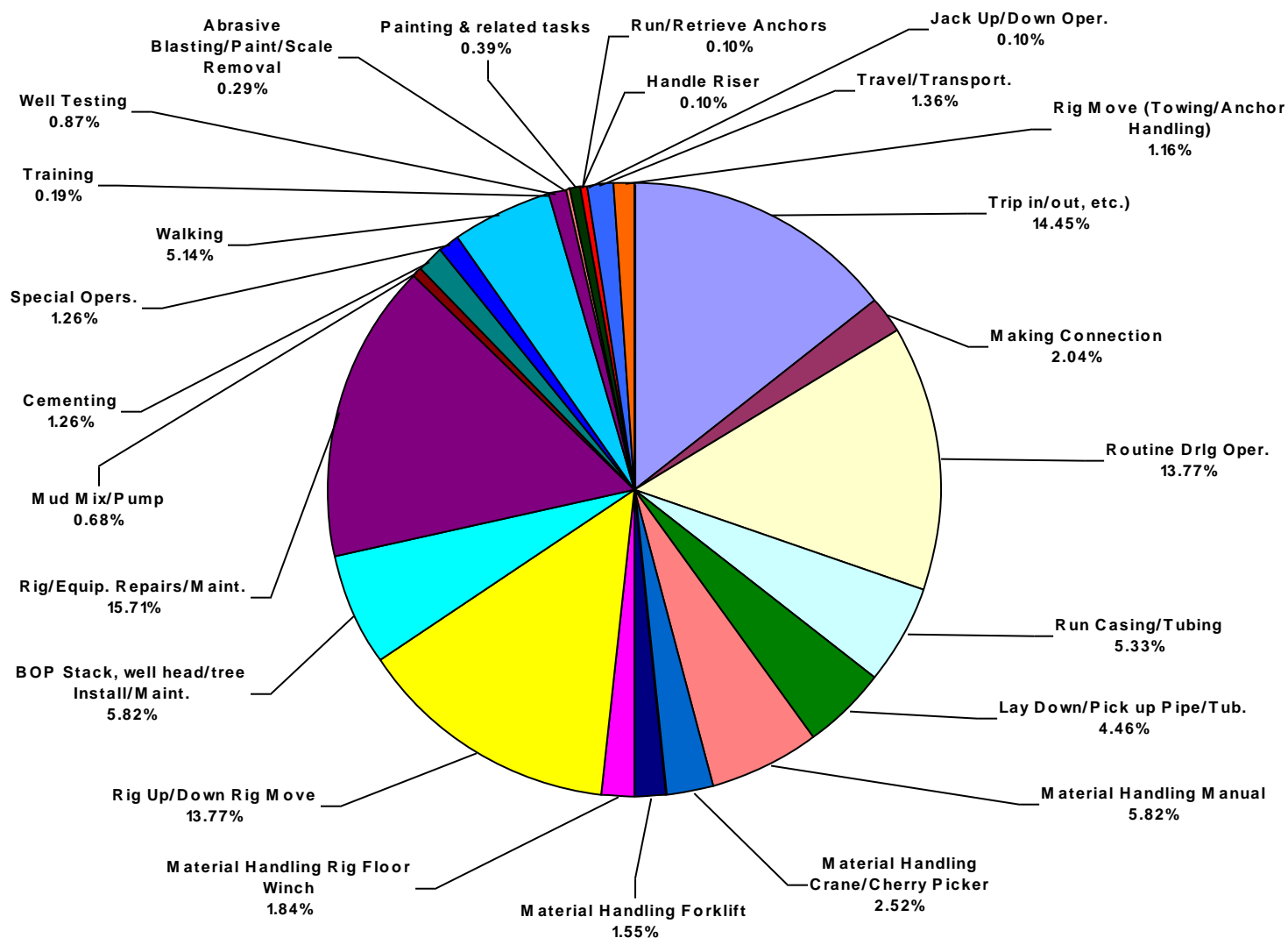


**Total Industry Lost Time Incidents by Operation (Chart 11)**  
Based on 302 Incidents



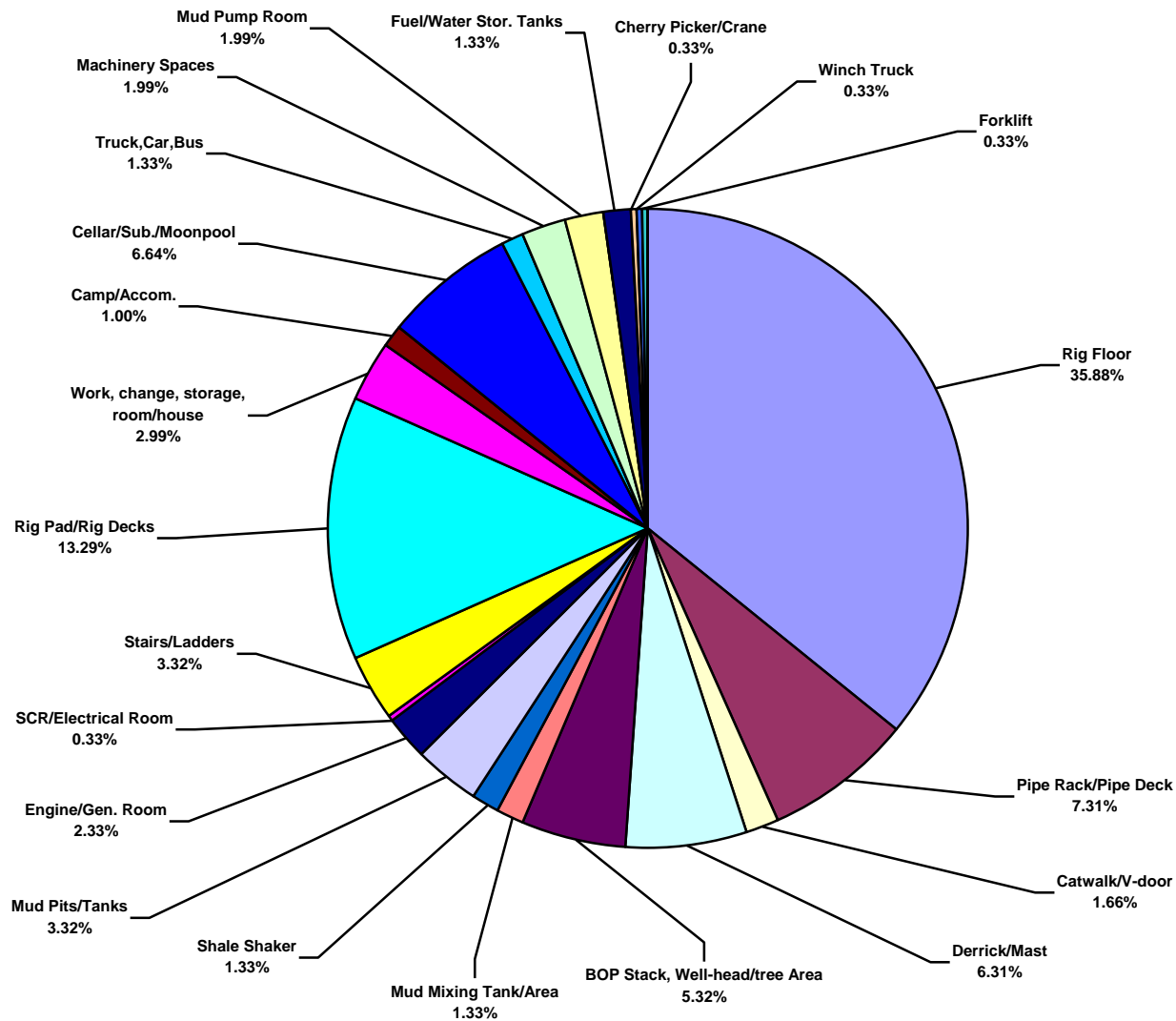
### Total Industry Recordable Incidents by Operation (Chart 12)

Based on 1031 Incidents

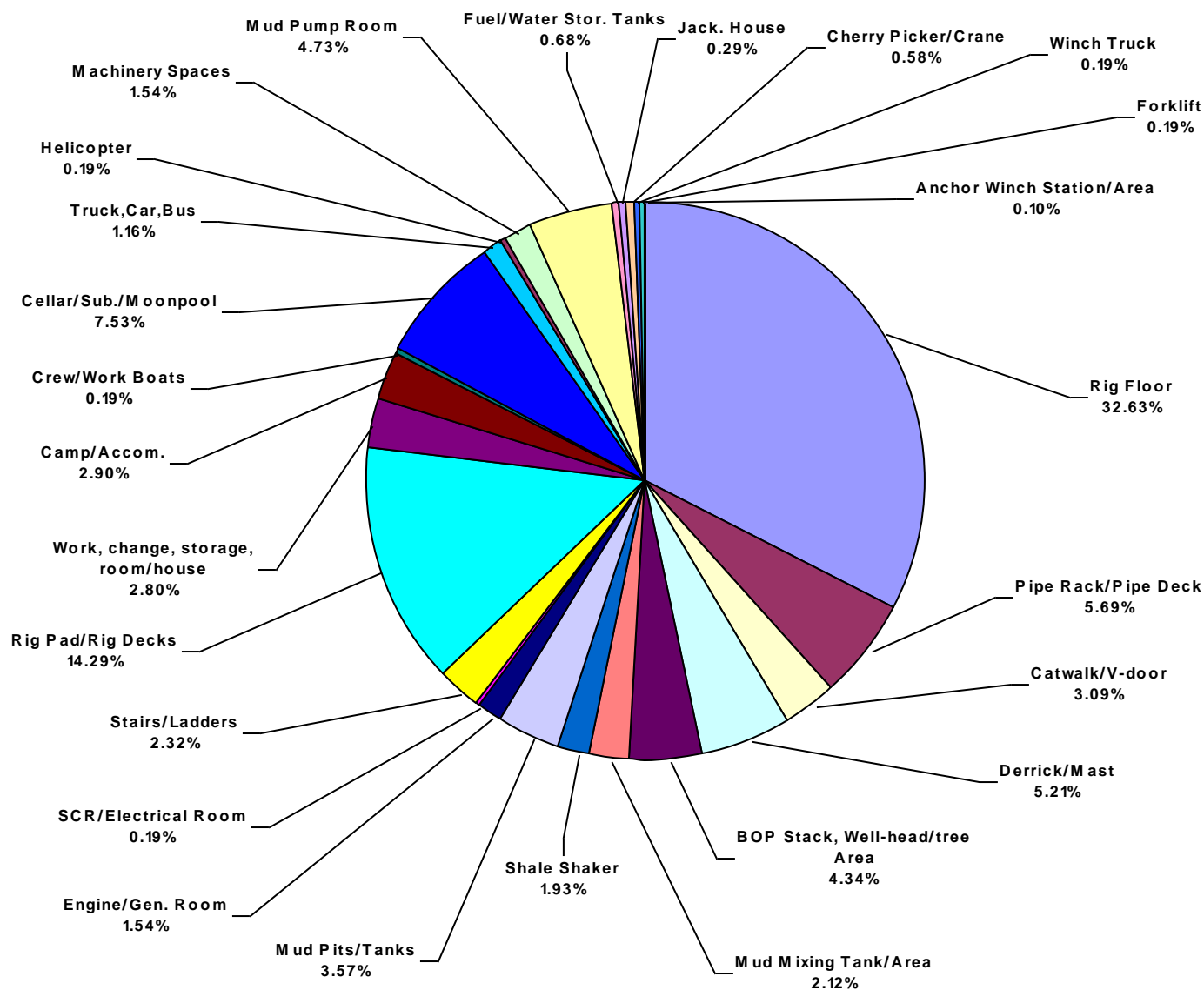




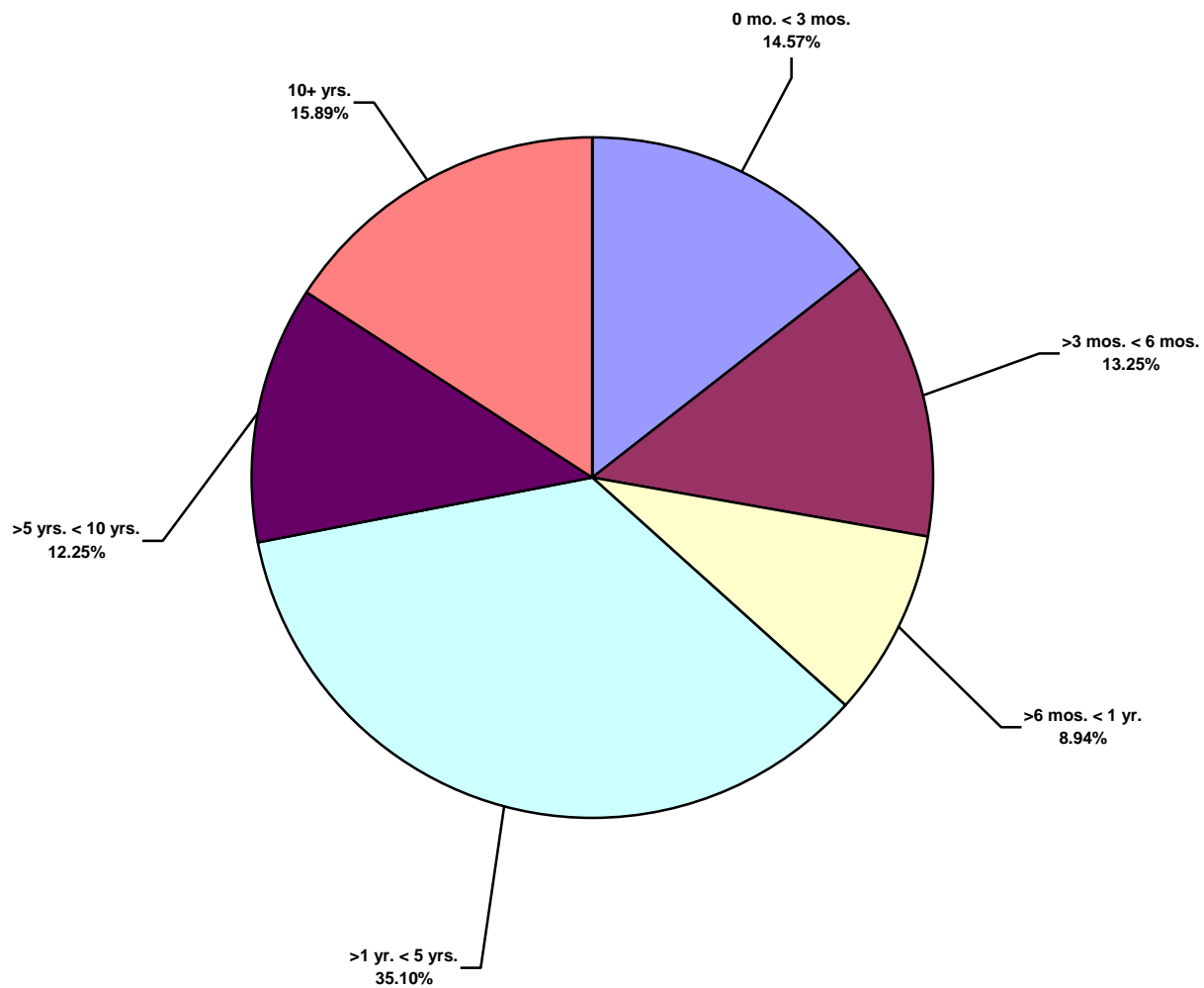
**Total Industry Lost Time Incidents by Location (Chart 13)**  
Based on 301 Incidents



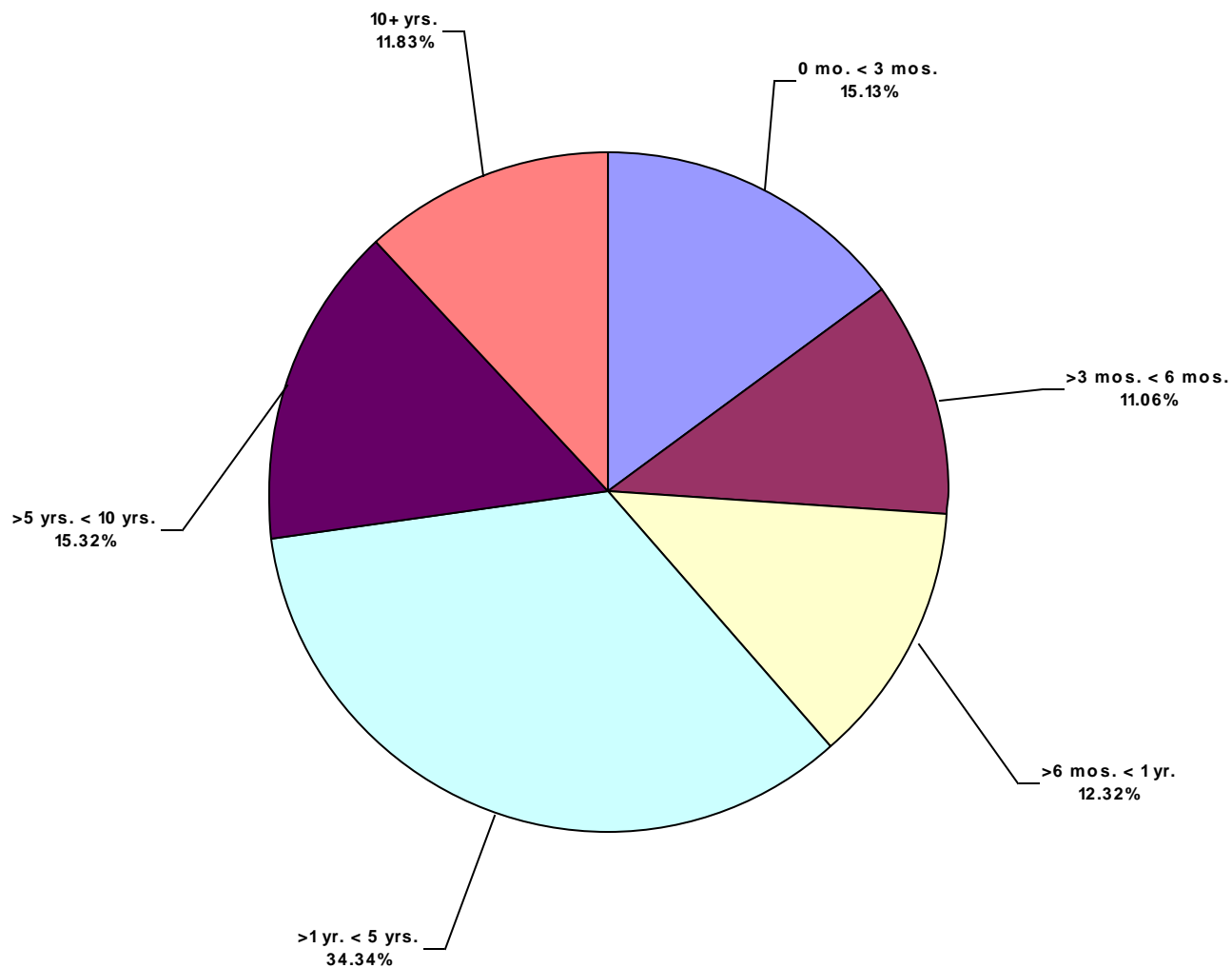
**Total Industry Recordable Incidents by Location (Chart 14)**  
Based on 1036 Incidents



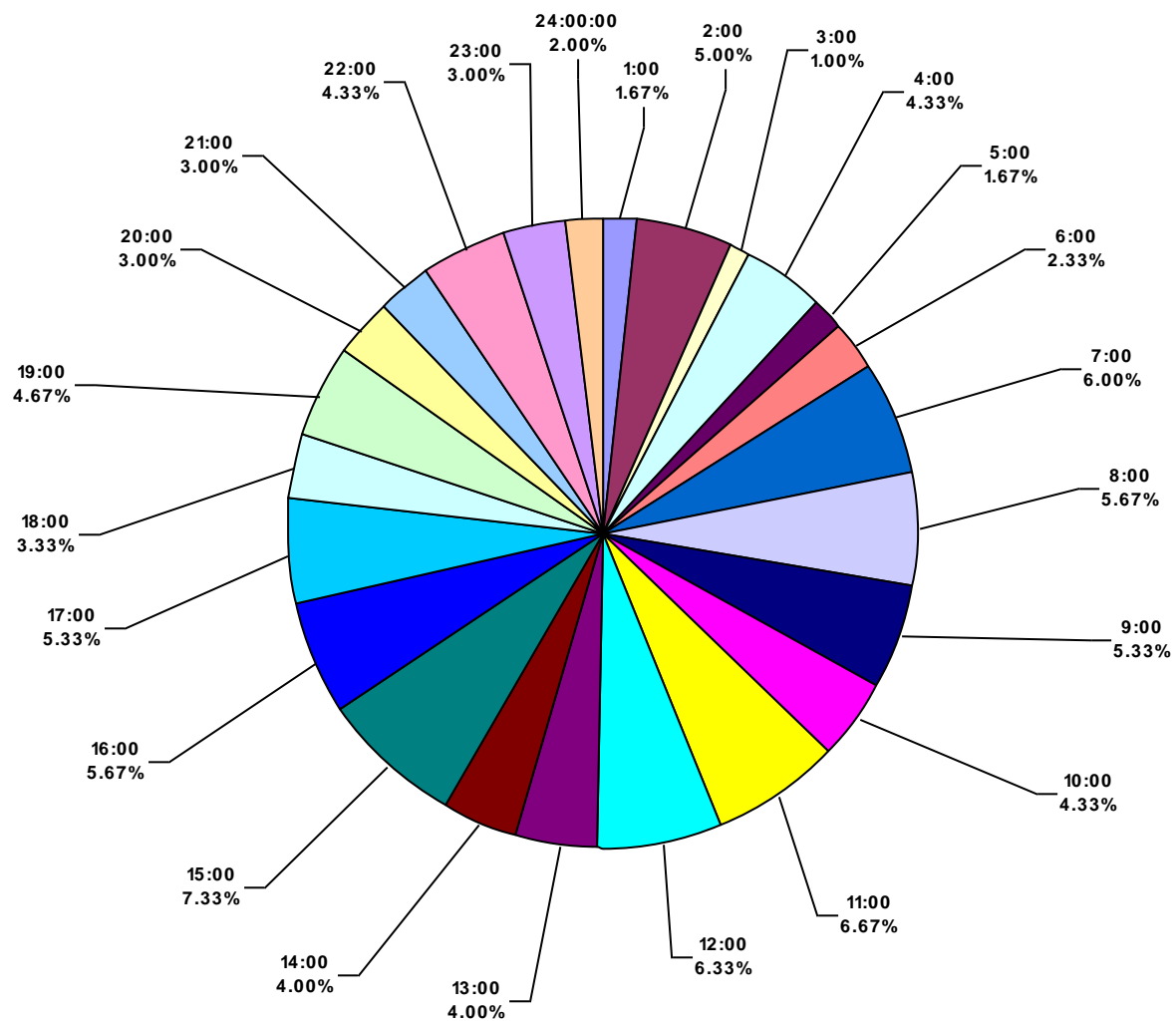
**Total Industry Lost Time Incidents by Time in Service (Chart 15)**  
Based on 302 Incidents



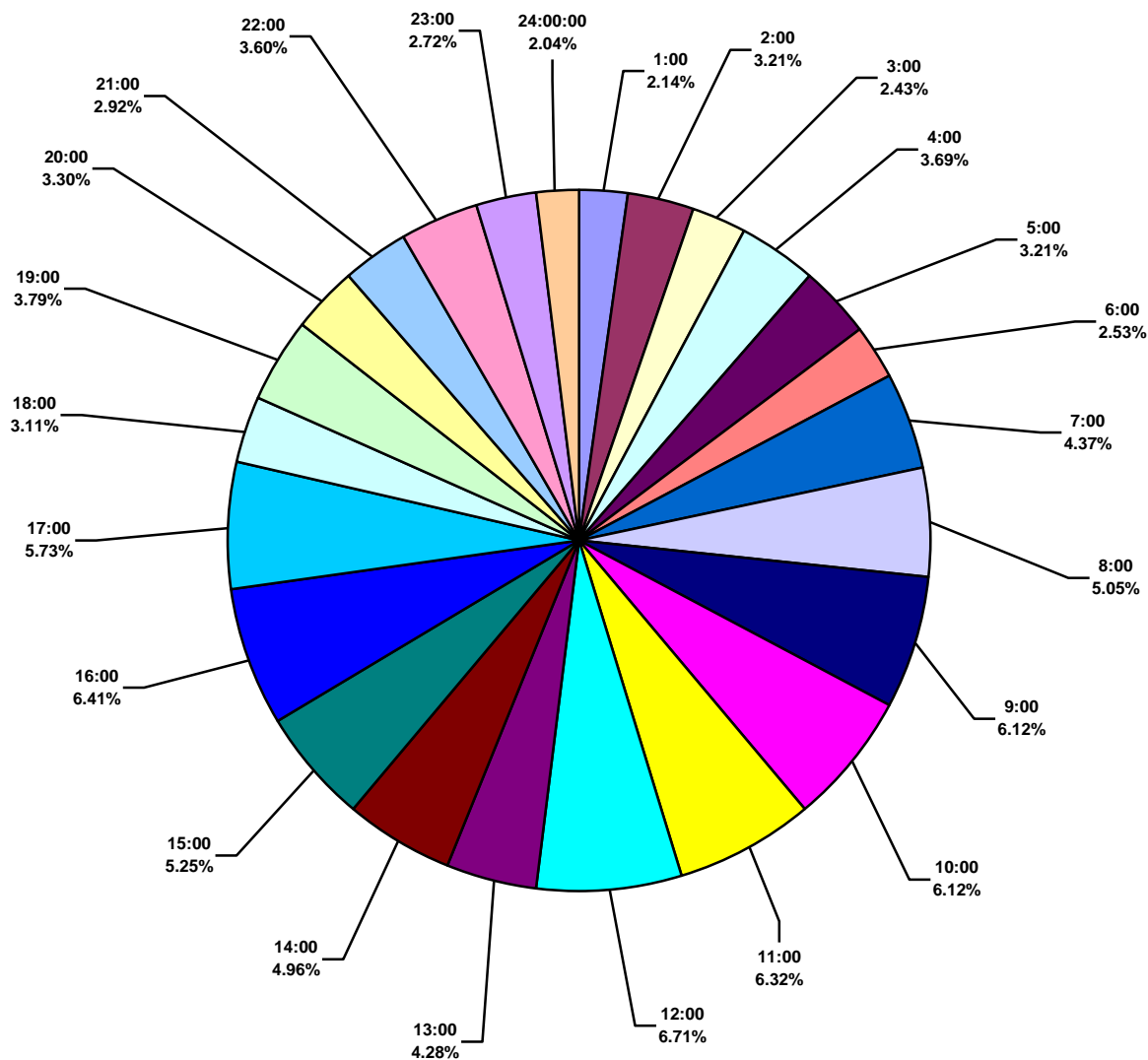
**Total Industry Recordable Incidents by Time in Service (Chart 16)**  
Based on 1031 Incidents



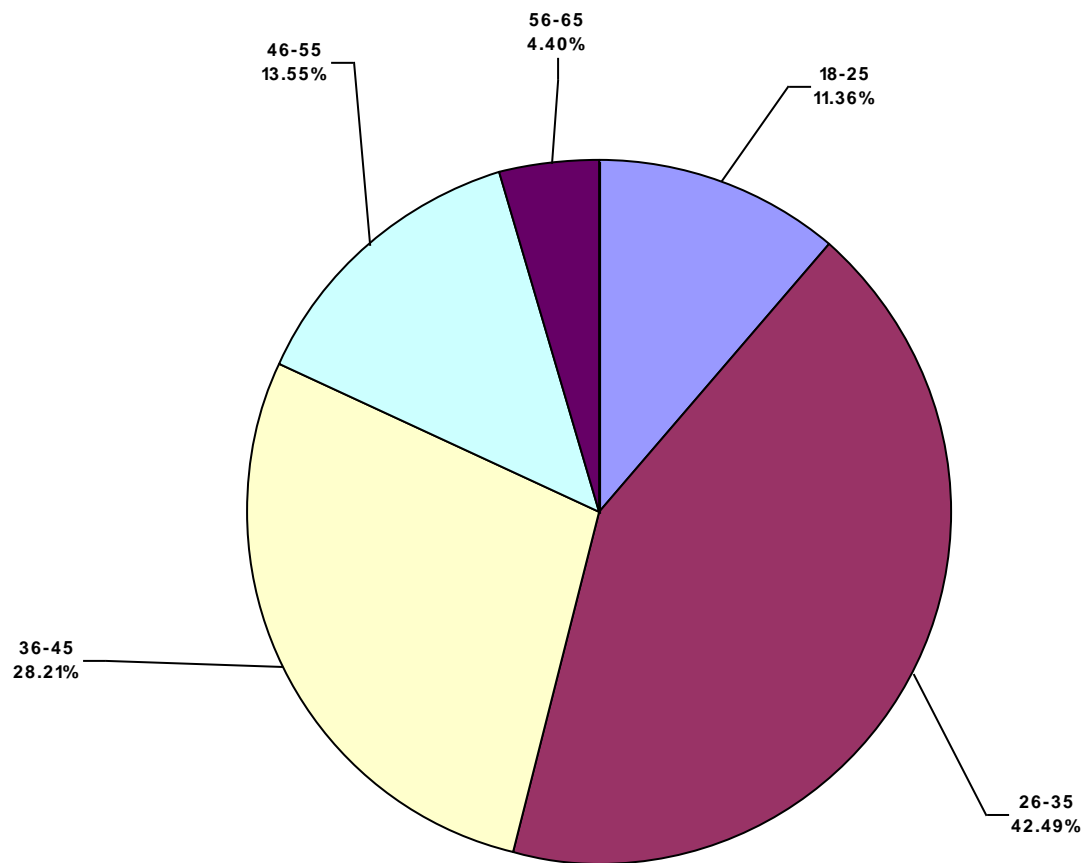
**Total Industry Lost Time Incidents by Time of Day (Chart 17)**  
Based on 300 Incidents



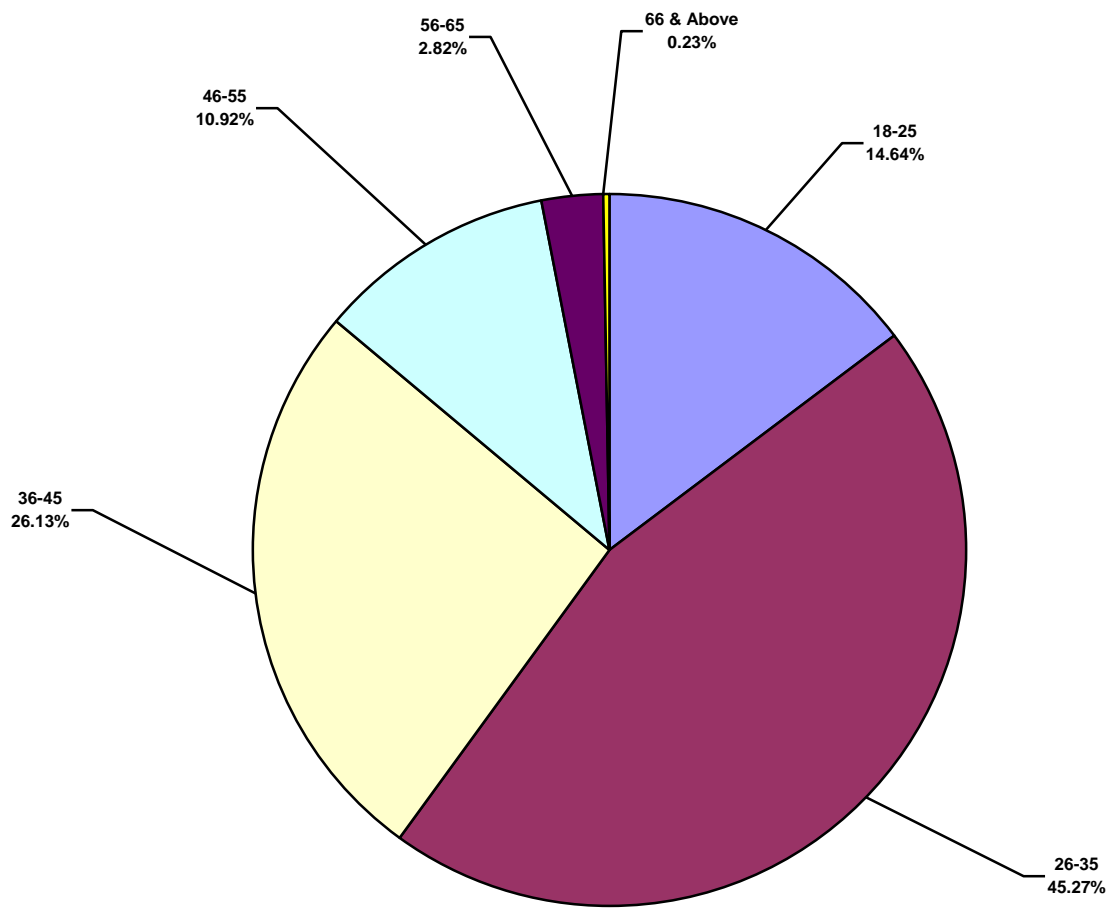
**Total Industry Recordable Incidents by Time of Day (Chart 18)**  
Based on 1029 Incidents



**Total Industry Lost Time Incidents by Age (Chart 19)**  
Based on 273 Incidents



**Total Industry Recordable Incidents by Age (Chart 20)**  
Based on 888 Incidents





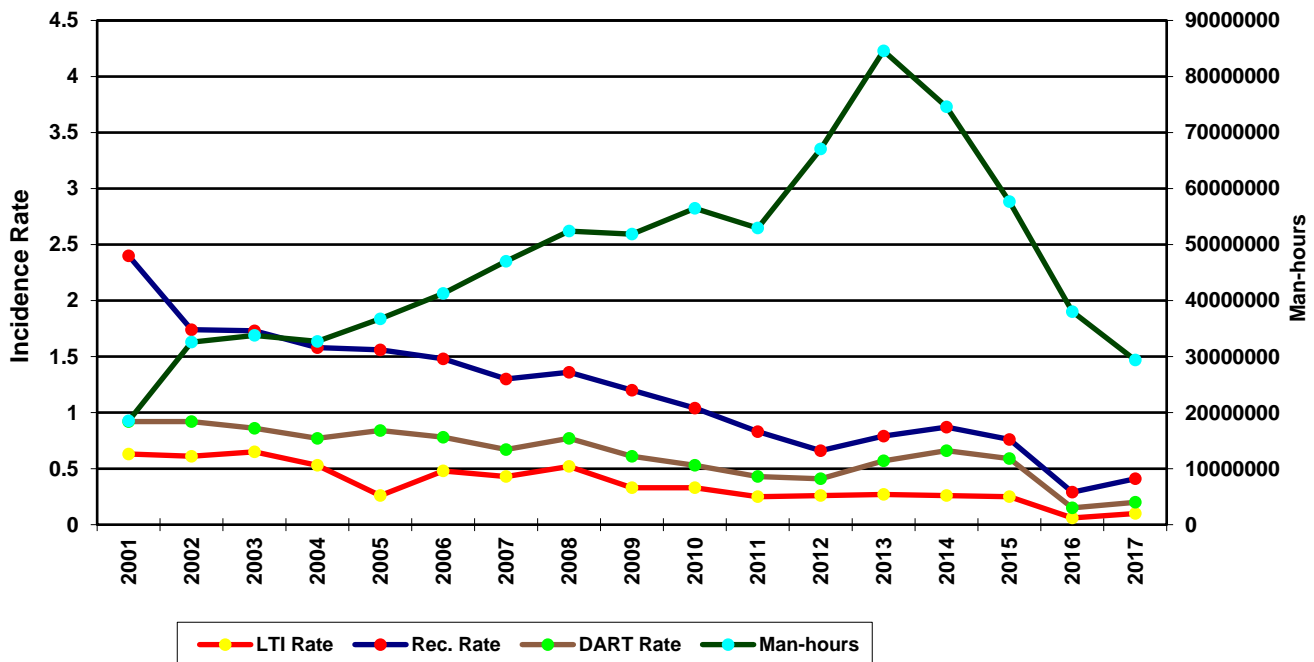
**2017 ISP Program Regional Totals  
Combined Land & Water  
IADC 2017 Africa Totals (Table 4)**

	LAND	WATER	COMBINED
<b>TOTAL MANHOURS</b>	15,447,105	13,944,560	29,391,665
<b>TOTAL MEDICAL TREATMENT INCIDENTS</b>	21	9	30
<b>TOTAL RESTRICTED WORK INCIDENTS</b>	8	7	15
<b>TOTAL LOST TIME INCIDENTS</b>	11	4	15
<b>TOTAL FATALITIES</b>	0	0	0
<b>TOTAL RECORDABLES</b>	40	20	60
<b>MTO INCIDENCE RATE</b>	0.27	0.13	0.20
<b>RWC INCIDENCE RATE</b>	0.10	0.10	0.10
<b>LTI INCIDENCE RATE</b>	0.14	0.06	0.10
<b>LTI FREQUENCY RATE</b>	0.71	0.29	0.51
<b>DART INCIDENCE RATE</b>	0.25	0.16	0.20
<b>DART FREQUENCY RATE</b>	1.23	0.79	1.02
<b>RECORDABLE INCIDENCE RATE</b>	0.52	0.29	0.41
<b>RECORDABLE FREQUENCY RATE</b>	2.59	1.43	2.04

MEDICAL TREATMENT INCIDENCE RATE = MTOs X 200,000 / MAN-HOURS (LTIs NOT INCLUDED)  
 RESTRICTED WORK INCIDENCE RATE = RWCs X 200,000 / MAN-HOURS (LTIs NOT INCLUDED)  
 LOST TIME INCIDENCE RATE = (LTIs+FTLs) X 200,000 / MAN-HOURS  
 LOST TIME FREQUENCY RATE = (LTIs+FTLs) X 1,000,000 / MAN-HOURS  
 DART INCIDENCE RATE = (LTIs+FTLs+RWCs) X 200,000 / MAN-HOURS  
 DART FREQUENCY RATE = (LTIs+FTLs+RWCs) X 1,000,000 / MAN-HOURS  
 RECORDABLE INCIDENCE RATE = RECORDABLES X 200,000 / MAN-HOURS  
 RECORDABLE FREQUENCY RATE = RECORDABLES X 1,000,000 / MAN-HOURS

Companies Reporting: Land – 11 Water – 17

**Africa Total LTI & Recordable Incidence Rates vs Man-hours (Figure 4)**



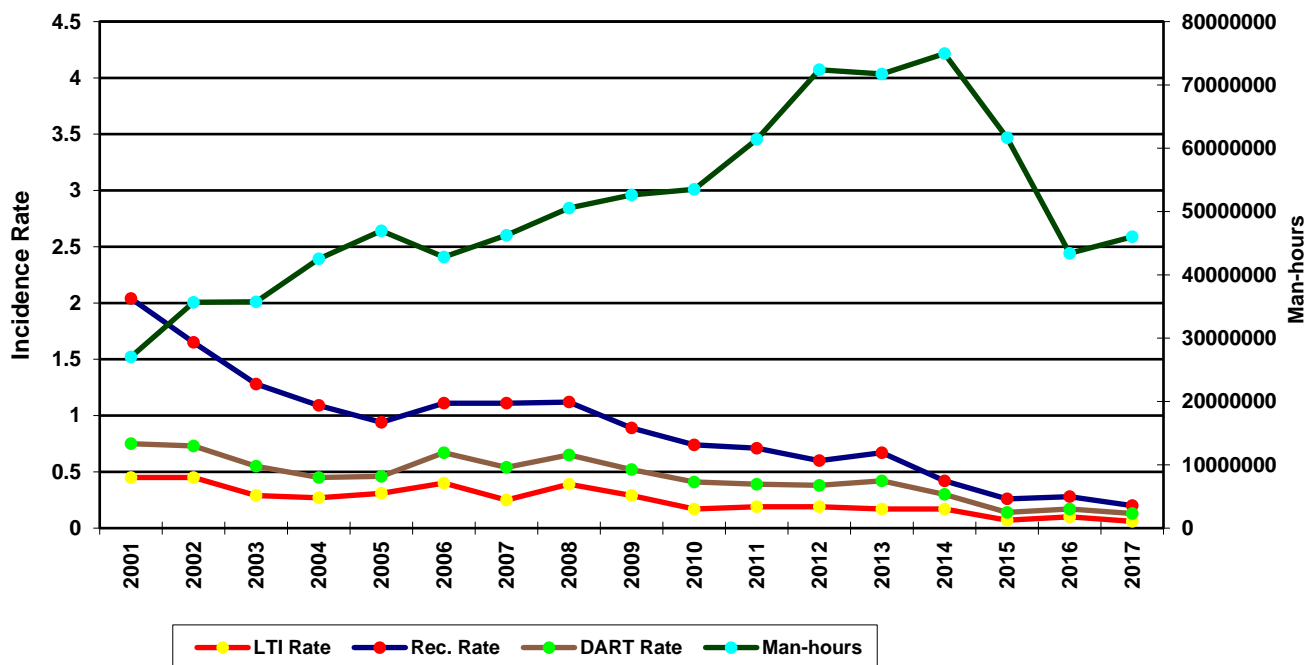
### IADC 2017 Asia Pacific Totals (Table 5)

	LAND	WATER	COMBINED
TOTAL MANHOURS	10,325,025	35,689,082	46,014,107
TOTAL MEDICAL TREATMENT INCIDENTS	4	13	17
TOTAL RESTRICTED WORK INCIDENTS	2	15	17
TOTAL LOST TIME INCIDENTS	1	12	13
TOTAL FATALITIES	0	0	0
TOTAL RECORDABLES	7	40	47
<b>MTO INCIDENCE RATE</b>	<b>0.08</b>	<b>0.07</b>	<b>0.07</b>
<b>RWC INCIDENCE RATE</b>	<b>0.04</b>	<b>0.08</b>	<b>0.07</b>
<b>LTI INCIDENCE RATE</b>	<b>0.02</b>	<b>0.07</b>	<b>0.06</b>
<b>LTI FREQUENCY RATE</b>	<b>0.10</b>	<b>0.34</b>	<b>0.28</b>
<b>DART INCIDENCE RATE</b>	<b>0.06</b>	<b>0.15</b>	<b>0.13</b>
<b>DART FREQUENCY RATE</b>	<b>0.29</b>	<b>0.76</b>	<b>0.65</b>
<b>RECORDABLE INCIDENCE RATE</b>	<b>0.14</b>	<b>0.22</b>	<b>0.20</b>
<b>RECORDABLE FREQUENCY RATE</b>	<b>0.68</b>	<b>1.12</b>	<b>1.02</b>

MEDICAL TREATMENT INCIDENCE RATE = MTOs X 200,000 / MAN-HOURS (LTIs NOT INCLUDED)  
 RESTRICTED WORK INCIDENCE RATE = RWCs X 200,000 / MAN-HOURS (LTIs NOT INCLUDED)  
 LOST TIME INCIDENCE RATE = (LTIs+FTLs) X 200,000 / MAN-HOURS  
 LOST TIME FREQUENCY RATE = (LTIs+FTLs) X 1,000,000 / MAN-HOURS  
 DART INCIDENCE RATE = (LTIs+FTLs+RWCs) X 200,000 / MAN-HOURS  
 DART INCIDENCE RATE = (LTIs+FTLs+RWCs) X 1,000,000 / MAN-HOURS  
 RECORDABLE INCIDENCE RATE = RECORDABLES X 200,000 / MAN-HOURS  
 RECORDABLE FREQUENCY RATE = RECORDABLES X 1,000,000 / MAN-HOURS

Companies Reporting: Land – 10 Water – 30

Asia Pacific Total LTI & Recordable Incidence Rates vs Man-hours (Figure 5)



## IADC 2017 Australasia Totals (Table 6)

	LAND	WATER	COMBINED
<b>TOTAL MANHOURS</b>	<b>3,331,859</b>	<b>659,482</b>	<b>3,991,341</b>
<b>TOTAL MEDICAL TREATMENT INCIDENTS</b>	<b>3</b>	<b>2</b>	<b>5</b>
<b>TOTAL RESTRICTED WORK INCIDENTS</b>	<b>3</b>	<b>1</b>	<b>4</b>
<b>TOTAL LOST TIME INCIDENTS</b>	<b>3</b>	<b>2</b>	<b>5</b>
<b>TOTAL FATALITIES</b>	<b>0</b>	<b>0</b>	<b>0</b>
<b>TOTAL RECORDABLES</b>	<b>9</b>	<b>5</b>	<b>14</b>
<b>MTO INCIDENCE RATE</b>	<b>0.18</b>	<b>0.61</b>	<b>0.25</b>
<b>RWC INCIDENCE RATE</b>	<b>0.18</b>	<b>0.30</b>	<b>0.20</b>
<b>LTI INCIDENCE RATE</b>	<b>0.18</b>	<b>0.61</b>	<b>0.25</b>
<b>LTI FREQUENCY RATE</b>	<b>0.90</b>	<b>3.03</b>	<b>1.25</b>
<b>DART INCIDENCE RATE</b>	<b>0.36</b>	<b>0.91</b>	<b>0.45</b>
<b>DART FREQUENCY RATE</b>	<b>1.80</b>	<b>4.55</b>	<b>2.25</b>
<b>RECORDABLE INCIDENCE RATE</b>	<b>0.54</b>	<b>1.52</b>	<b>0.70</b>
<b>RECORDABLE FREQUENCY RATE</b>	<b>2.70</b>	<b>7.58</b>	<b>3.51</b>

MEDICAL TREATMENT INCIDENCE RATE = MTOs X 200,000 / MAN-HOURS (LTIs NOT INCLUDED)

RESTRICTED WORK INCIDENCE RATE = RWCs X 200,000 / MAN-HOURS (LTIs NOT INCLUDED)

LOST TIME INCIDENCE RATE = (LTIs+FTLs) X 200,000 / MAN-HOURS

LOST TIME FREQUENCY RATE = (LTIs+FTLs) X 1,000,000 / MAN-HOURS

DART INCIDENCE RATE = (LTIs+FTLs+RWCs) X 200,000 / MAN-HOURS

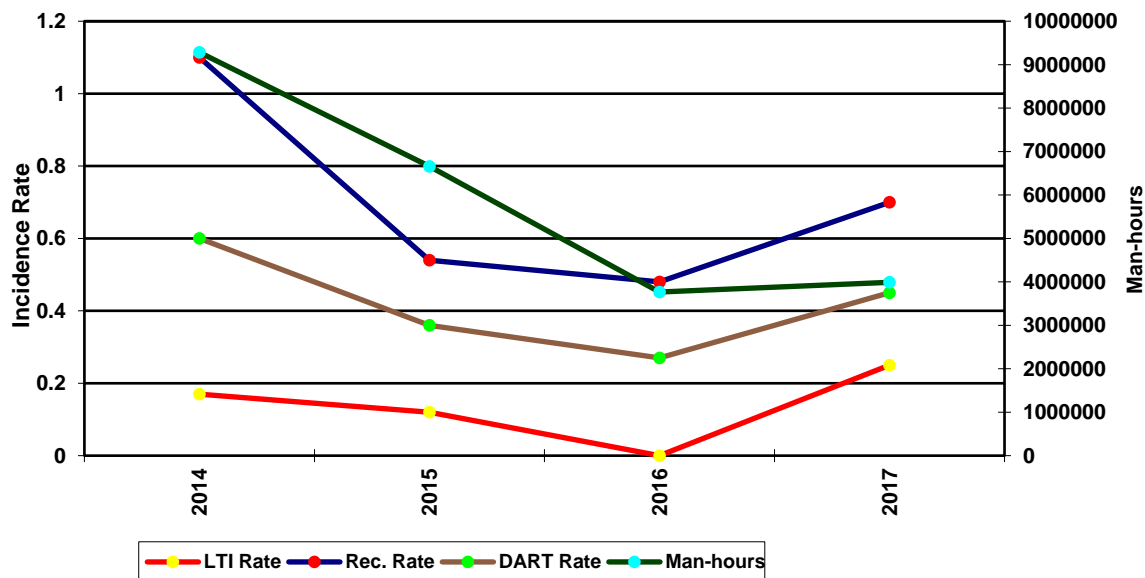
DART FREQUENCY RATE = (LTIs+FTLs+RWCs) X 1,000,000 / MAN-HOURS

RECORDABLE INCIDENCE RATE = RECORDABLES X 200,000 / MAN-HOURS

RECORDABLE FREQUENCY RATE = RECORDABLES X 1,000,000 / MAN-HOURS

Companies Reporting: Land – 7; Water – 5

**Australasia Total LTI & Recordable Incidence Rates vs Man-hours (Figure 6)**



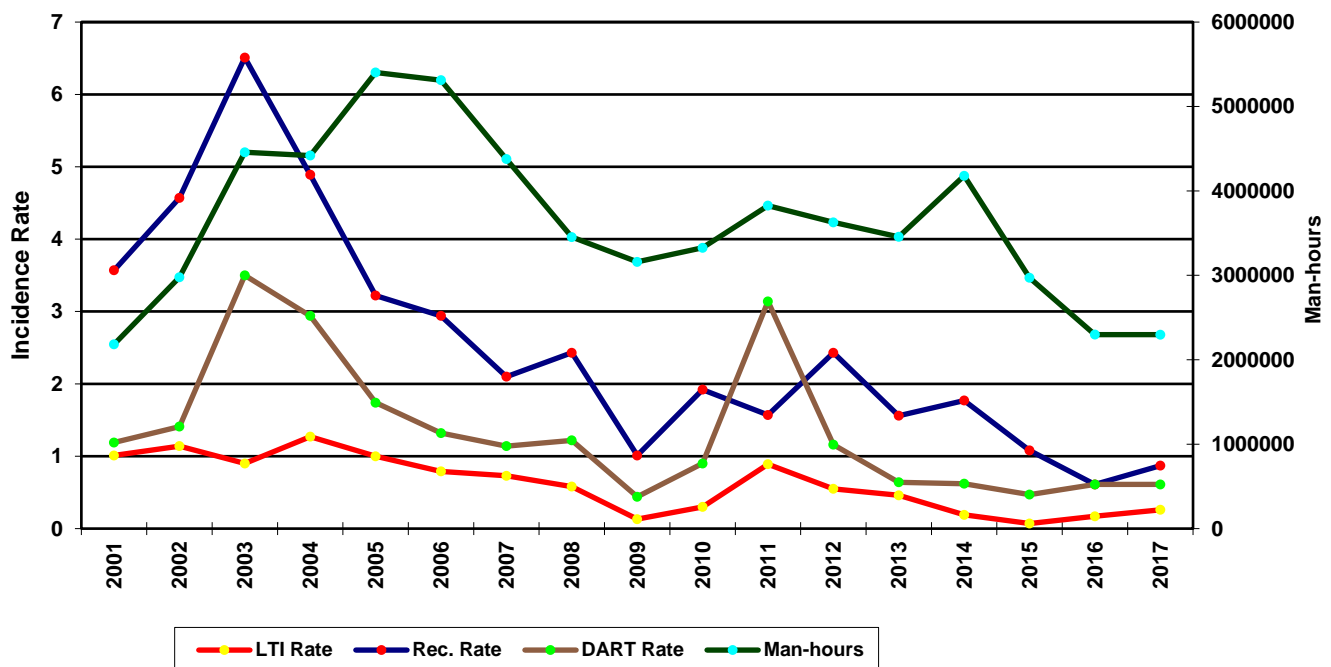
## IADC 2017 Canada Totals (Table 7)

	LAND	WATER	COMBINED
<b>TOTAL MANHOURS</b>	1,016,078	1,280,874	2,296,952
<b>TOTAL MEDICAL TREATMENT INCIDENTS</b>	2	1	3
<b>TOTAL RESTRICTED WORK INCIDENTS</b>	2	2	4
<b>TOTAL LOST TIME INCIDENTS</b>	2	1	3
<b>TOTAL FATALITIES</b>	0	0	0
<b>TOTAL RECORDABLES</b>	6	4	10
<b>MTO INCIDENCE RATE</b>	0.39	0.16	0.26
<b>RWC INCIDENCE RATE</b>	0.39	0.31	0.35
<b>LTI INCIDENCE RATE</b>	0.39	0.16	0.26
<b>LTI FREQUENCY RATE</b>	1.97	0.78	1.31
<b>DART INCIDENCE RATE</b>	0.79	0.47	0.61
<b>DART FREQUENCY RATE</b>	3.94	2.34	3.05
<b>RECORDABLE INCIDENCE RATE</b>	1.18	0.62	0.87
<b>RECORDABLE FREQUENCY RATE</b>	5.91	3.12	4.35

MEDICAL TREATMENT INCIDENCE RATE = MTOs X 200,000 / MAN-HOURS (LTIs NOT INCLUDED)  
 RESTRICTED WORK INCIDENCE RATE = RWCs X 200,000 / MAN-HOURS (LTIs NOT INCLUDED)  
 LOST TIME INCIDENCE RATE = (LTIs+FTLs) X 200,000 / MAN-HOURS  
 LOST TIME FREQUENCY RATE = (LTIs+FTLs) X 1,000,000 / MAN-HOURS  
 DART INCIDENCE RATE = (LTIs+FTLs+RWCs) X 200,000 / MAN-HOURS  
 DART INCIDENCE RATE - (LTIs+FTLs+RWCs) X 1,000,000 / MAN-HOURS  
 RECORDABLE INCIDENCE RATE = RECORDABLES X 200,000 / MAN-HOURS  
 RECORDABLE FREQUENCY RATE = RECORDABLES X 1,000,000 / MAN-HOURS

Companies Reporting: Land – 3 Water – 5

**Canada Total LTI & Recordable Incidence Rates vs Man-hours (Figure 7)**



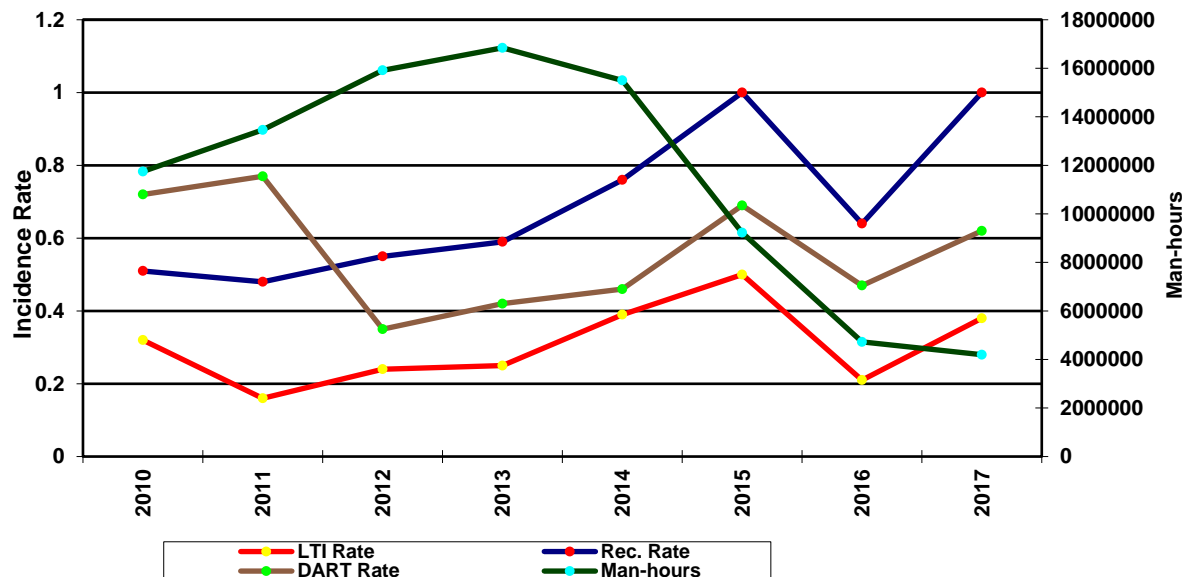
## IADC 2017 Central America & Caribbean Totals (Table 8)

	LAND	WATER	COMBINED
<b>TOTAL MANHOURS</b>	400,688	3,796,094	4,196,782
<b>TOTAL MEDICAL TREATMENT INCIDENTS</b>	0	8	8
<b>TOTAL RESTRICTED WORK INCIDENTS</b>	0	5	5
<b>TOTAL LOST TIME INCIDENTS</b>	1	7	8
<b>TOTAL FATALITIES</b>	0	0	0
<b>TOTAL RECORDABLES</b>	1	20	21
<b>MTO INCIDENCE RATE</b>	0.00	0.42	0.38
<b>RWC INCIDENCE RATE</b>	0.00	0.26	0.24
<b>LTI INCIDENCE RATE</b>	0.50	0.37	0.38
<b>LTI FREQUENCY RATE</b>	2.50	1.84	1.91
<b>DART INCIDENCE RATE</b>	0.50	0.63	0.62
<b>DART FREQUENCY RATE</b>	2.50	3.16	3.10
<b>RECORDABLE INCIDENCE RATE</b>	0.50	1.05	1.00
<b>RECORDABLE FREQUENCY RATE</b>	2.50	5.27	5.00

MEDICAL TREATMENT INCIDENCE RATE = MTOs X 200,000 / MAN-HOURS (LTIs NOT INCLUDED)  
 RESTRICTED WORK INCIDENCE RATE = RWCs X 200,000 / MAN-HOURS (LTIs NOT INCLUDED)  
 LOST TIME INCIDENCE RATE = (LTIs+FTLs) X 200,000 / MAN-HOURS  
 LOST TIME FREQUENCY RATE = (LTIs+FTLs) X 1,000,000 / MAN-HOURS  
 DART INCIDENCE RATE = (LTIs+FTLs+RWCs) X 200,000 / MAN-HOURS  
 DART FREQUENCY RATE = (LTIs+FTLs+RWCs) X 1,000,000 / MAN-HOURS  
 RECORDABLE INCIDENCE RATE = RECORDABLES X 200,000 / MAN-HOURS  
 RECORDABLE FREQUENCY RATE = RECORDABLES X 1,000,000 / MAN-HOURS

Companies Reporting: Land – 6 Water – 10

**Central America & Caribbean Total LTI & Recordable Incidence Rates vs Man-hours**  
(Figure 8)



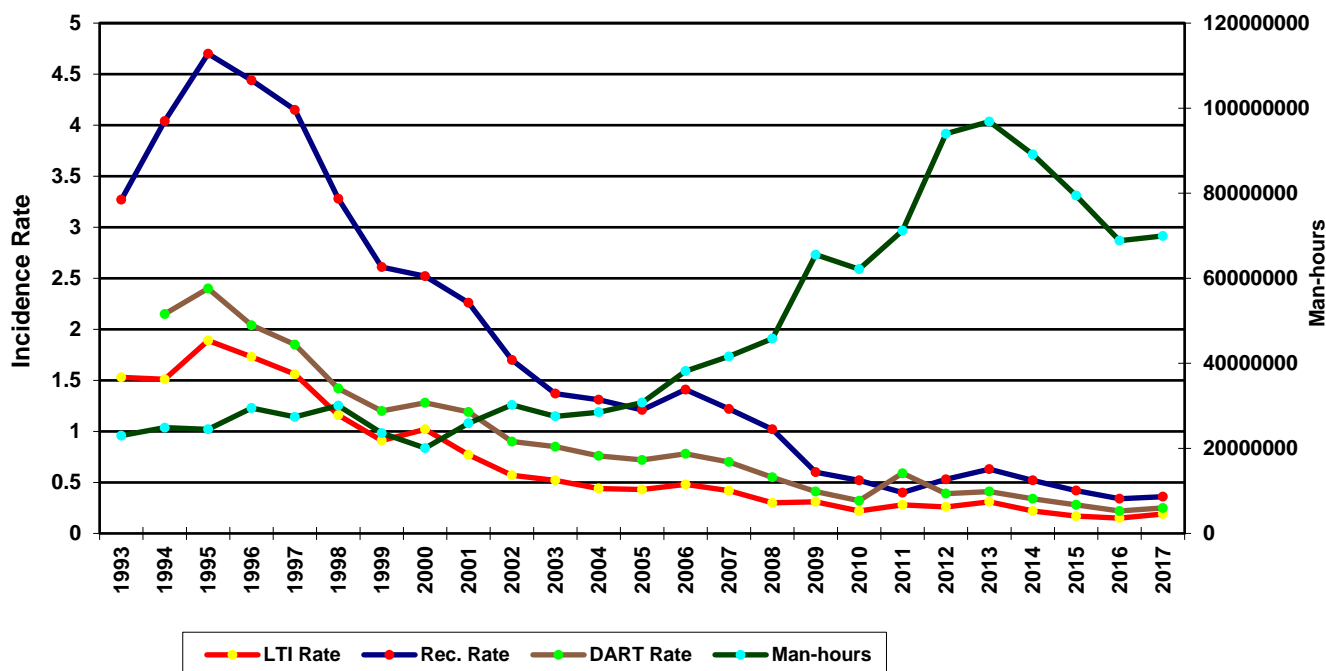
## IADC 2017 European Totals (Table 9)

	LAND	WATER	COMBINED
<b>TOTAL MANHOURS</b>	44,274,793	25,681,274	69,956,067
<b>TOTAL MEDICAL TREATMENT INCIDENTS</b>	10	28	38
<b>TOTAL RESTRICTED WORK INCIDENTS</b>	8	15	23
<b>TOTAL LOST TIME INCIDENTS</b>	43	18	61
<b>TOTAL FATALITIES</b>	3	1	4
<b>TOTAL RECORDABLES</b>	64	62	126
<b>MTO INCIDENCE RATE</b>	0.05	0.22	0.11
<b>RWC INCIDENCE RATE</b>	0.04	0.12	0.07
<b>LTI INCIDENCE RATE</b>	0.21	0.15	0.19
<b>LTI FREQUENCY RATE</b>	1.04	0.74	0.93
<b>DART INCIDENCE RATE</b>	0.24	0.26	0.25
<b>DART FREQUENCY RATE</b>	1.22	1.32	1.26
<b>RECORDABLE INCIDENCE RATE</b>	0.29	0.48	0.36
<b>RECORDABLE FREQUENCY RATE</b>	1.45	2.41	1.80

MEDICAL TREATMENT INCIDENCE RATE = MTOs X 200,000 / MAN-HOURS (LTIs NOT INCLUDED)  
 RESTRICTED WORK INCIDENCE RATE = RWCs X 200,000 / MAN-HOURS (LTIs NOT INCLUDED)  
 LOST TIME INCIDENCE RATE = (LTIs+FTLs) X 200,000 / MAN-HOURS  
 LOST TIME FREQUENCY RATE = (LTIs+FTLs) X 1,000,000 / MAN-HOURS  
 DART INCIDENCE RATE = (LTIs+FTLs+RWCs) X 200,000 / MAN-HOURS  
 DART INCIDENCE RATE = (LTIs+FTLs+RWCs) X 1,000,000 / MAN-HOURS  
 RECORDABLE INCIDENCE RATE = RECORDABLES X 200,000 / MAN-HOURS  
 RECORDABLE FREQUENCY RATE = RECORDABLES X 1,000,000 / MAN-HOURS

Companies Reporting: Land – 12 Water – 20

**European Total LTI & Recordable Incidence Rates vs Man-hours (Figure 9)**



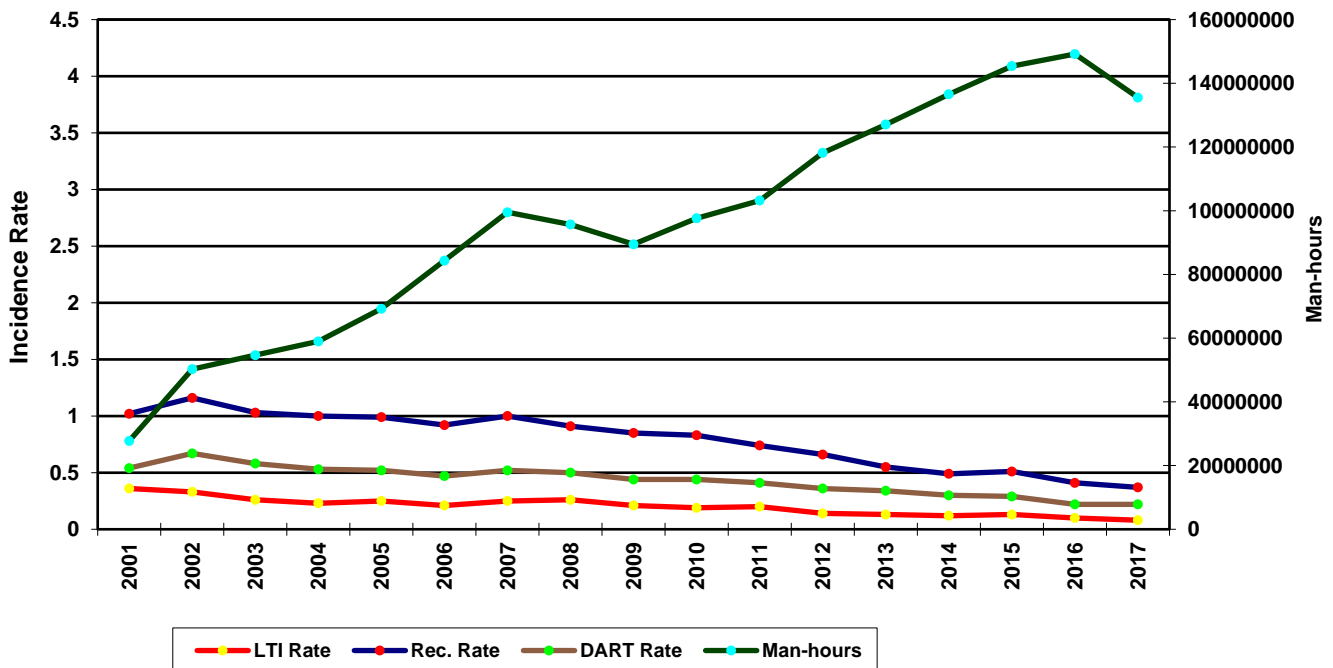
## IADC 2017 Middle East Totals (Table 10)

	LAND	WATER	COMBINED
<b>TOTAL MANHOURS</b>	95,628,447	39,906,727	135,535,174
<b>TOTAL MEDICAL TREATMENT INCIDENTS</b>	73	25	98
<b>TOTAL RESTRICTED WORK INCIDENTS</b>	66	31	97
<b>TOTAL LOST TIME INCIDENTS</b>	38	12	50
<b>TOTAL FATALITIES</b>	4	0	4
<b>TOTAL RECORDABLES</b>	181	68	249
<b>MTO INCIDENCE RATE</b>	0.15	0.13	0.14
<b>RWC INCIDENCE RATE</b>	0.14	0.16	0.14
<b>LTI INCIDENCE RATE</b>	0.09	0.06	0.08
<b>LTI FREQUENCY RATE</b>	0.44	0.30	0.40
<b>DART INCIDENCE RATE</b>	0.23	0.22	0.22
<b>DART FREQUENCY RATE</b>	1.13	1.08	1.11
<b>RECORDABLE INCIDENCE RATE</b>	0.38	0.34	0.37
<b>RECORDABLE FREQUENCY RATE</b>	1.89	1.70	1.84

MEDICAL TREATMENT INCIDENCE RATE = MTOs X 200,000 / MAN-HOURS (LTIs NOT INCLUDED)  
 RESTRICTED WORK INCIDENCE RATE = RWCs X 200,000 / MAN-HOURS (LTIs NOT INCLUDED)  
 LOST TIME INCIDENCE RATE = (LTIs+FTLs) X 200,000 / MAN-HOURS  
 LOST TIME FREQUENCY RATE = (LTIs+FTLs) X 1,000,000 / MAN-HOURS  
 DART INCIDENCE RATE = (LTIs+FTLs+RWCs) X 200,000 / MAN-HOURS  
 DART FREQUENCY RATE = (LTIs+FTLs+RWCs) X 1,000,000 / MAN-HOURS  
 RECORDABLE INCIDENCE RATE = RECORDABLES X 200,000 / MAN-HOURS  
 RECORDABLE FREQUENCY RATE = RECORDABLES X 1,000,000 / MAN-HOURS

Companies Reporting: Land – 21 Water – 19

**Middle East Total LTI & Recordable Incidence Rates vs Man-hours (Figure 10)**



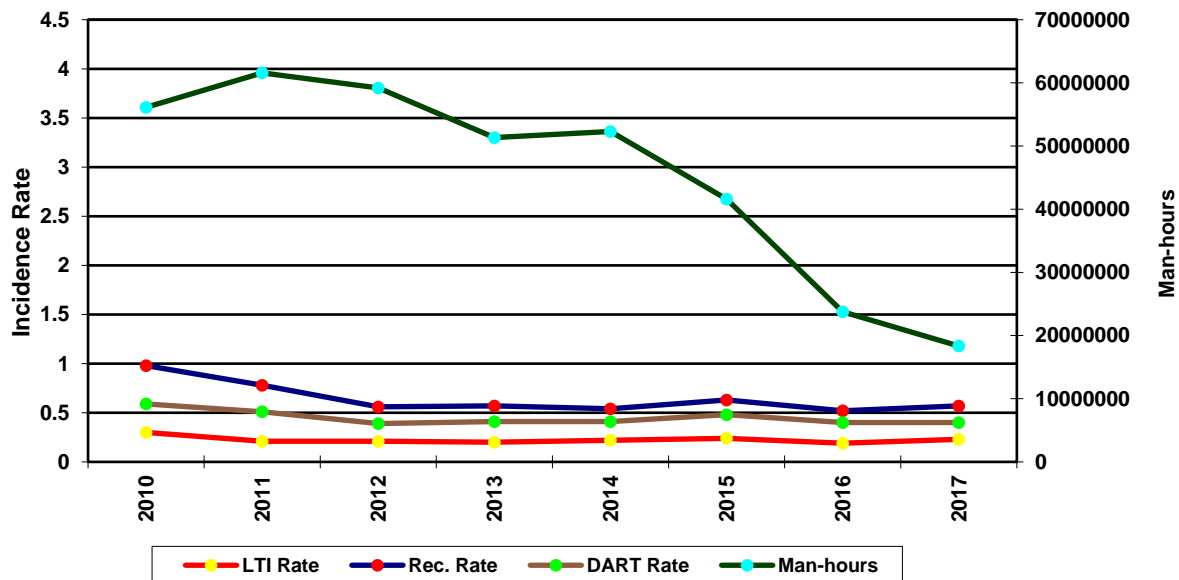
## IADC 2017 South American Totals (Table 11)

	LAND	WATER	COMBINED
<b>TOTAL MANHOURS</b>	9,518,345	8,824,098	18,342,443
<b>TOTAL MEDICAL TREATMENT INCIDENTS</b>	12	3	15
<b>TOTAL RESTRICTED WORK INCIDENTS</b>	16	0	16
<b>TOTAL LOST TIME INCIDENTS</b>	12	9	21
<b>TOTAL FATALITIES</b>	0	0	0
<b>TOTAL RECORDABLES</b>	40	12	52
<b>MTO INCIDENCE RATE</b>	0.25	0.07	0.16
<b>RWC INCIDENCE RATE</b>	0.34	0.00	0.17
<b>LTI INCIDENCE RATE</b>	0.25	0.20	0.23
<b>LTI FREQUENCY RATE</b>	1.26	1.02	1.14
<b>DART INCIDENCE RATE</b>	0.59	0.20	0.40
<b>DART FREQUENCY RATE</b>	2.94	1.02	2.02
<b>RECORDABLE INCIDENCE RATE</b>	0.84	0.27	0.57
<b>RECORDABLE FREQUENCY RATE</b>	4.20	1.36	2.83

MEDICAL TREATMENT INCIDENCE RATE = MTOs X 200,000 / MAN-HOURS (LTIs NOT INCLUDED)  
 RESTRICTED WORK INCIDENCE RATE = RWCs X 200,000 / MAN-HOURS (LTIs NOT INCLUDED)  
 LOST TIME INCIDENCE RATE = (LTIs+FTLs) X 200,000 / MAN-HOURS  
 LOST TIME FREQUENCY RATE = (LTIs+FTLs) X 1,000,000 / MAN-HOURS  
 DART INCIDENCE RATE = (LTIs+FTLs+RWCs) X 200,000 / MAN-HOURS  
 DART FREQUENCY RATE = (LTIs+FTLs+RWCs) X 1,000,000 / MAN-HOURS  
 RECORDABLE INCIDENCE RATE = RECORDABLES X 200,000 / MAN-HOURS  
 RECORDABLE FREQUENCY RATE = RECORDABLES X 1,000,000 / MAN-HOURS

Companies Reporting: Land – 8 Water – 11

**South America Total LTI & Recordable Incidence Rates vs Man-hours (Figure 11)**





### IADC 2017 US Totals (Table 12)

	LAND	WATER	COMBINED
<b>TOTAL MANHOURS</b>	55,488,587	22,777,018	78,265,605
<b>TOTAL MEDICAL TREATMENT INCIDENTS</b>	164	23	187
<b>TOTAL RESTRICTED WORK INCIDENTS</b>	135	17	152
<b>TOTAL LOST TIME INCIDENTS</b>	117	11	128
<b>TOTAL FATALITIES</b>	1	1	2
<b>TOTAL RECORDABLES</b>	417	52	469
<b>MTO INCIDENCE RATE</b>	0.59	0.20	0.48
<b>RWC INCIDENCE RATE</b>	0.49	0.15	0.39
<b>LTI INCIDENCE RATE</b>	0.43	0.11	0.33
<b>LTI FREQUENCY RATE</b>	2.13	0.53	1.66
<b>DART INCIDENCE RATE</b>	0.91	0.25	0.72
<b>DART FREQUENCY RATE</b>	4.56	1.27	3.60
<b>RECORDABLE INCIDENCE RATE</b>	1.50	0.46	1.20
<b>RECORDABLE FREQUENCY RATE</b>	7.52	2.28	5.99

MEDICAL TREATMENT INCIDENCE RATE = MTOs X 200,000 / MAN-HOURS (LTIs NOT INCLUDED)  
 RESTRICTED WORK INCIDENCE RATE = RWCs X 200,000 / MAN-HOURS (LTIs NOT INCLUDED)  
 LOST TIME INCIDENCE RATE = (LTIs+FTLs) X 200,000 / MAN-HOURS  
 LOST TIME FREQUENCY RATE = (LTIs+FTLs) X 1,000,000 / MAN-HOURS  
 DART INCIDENCE RATE = (LTIs+FTLs+RWCs) X 200,000 / MAN-HOURS  
 DART FREQUENCY RATE = (LTIs+FTLs+RWCs) X 1,000,000 / MAN-HOURS  
 RECORDABLE INCIDENCE RATE = RECORDABLES X 200,000 / MAN-HOURS  
 RECORDABLE FREQUENCY RATE = RECORDABLES X 1,000,000 / MAN-HOURS

Companies Reporting: Land – 29; Water – 14

**US Total LTI & Recordable Incidence Rates vs Man-hours (Figure 12)**

