



IADC DEC Q3 2017

EQUIPPED FOR MPD

Neal Richard

Regional Product Line Manager
Well Integrity

MPD PREPAREDNESS

- Various Industry Views
- Levels of Integration
- Variety of vessel types
- MPD Variants
- Multiple providers
- Buy or Rent
- No one size fits all solution

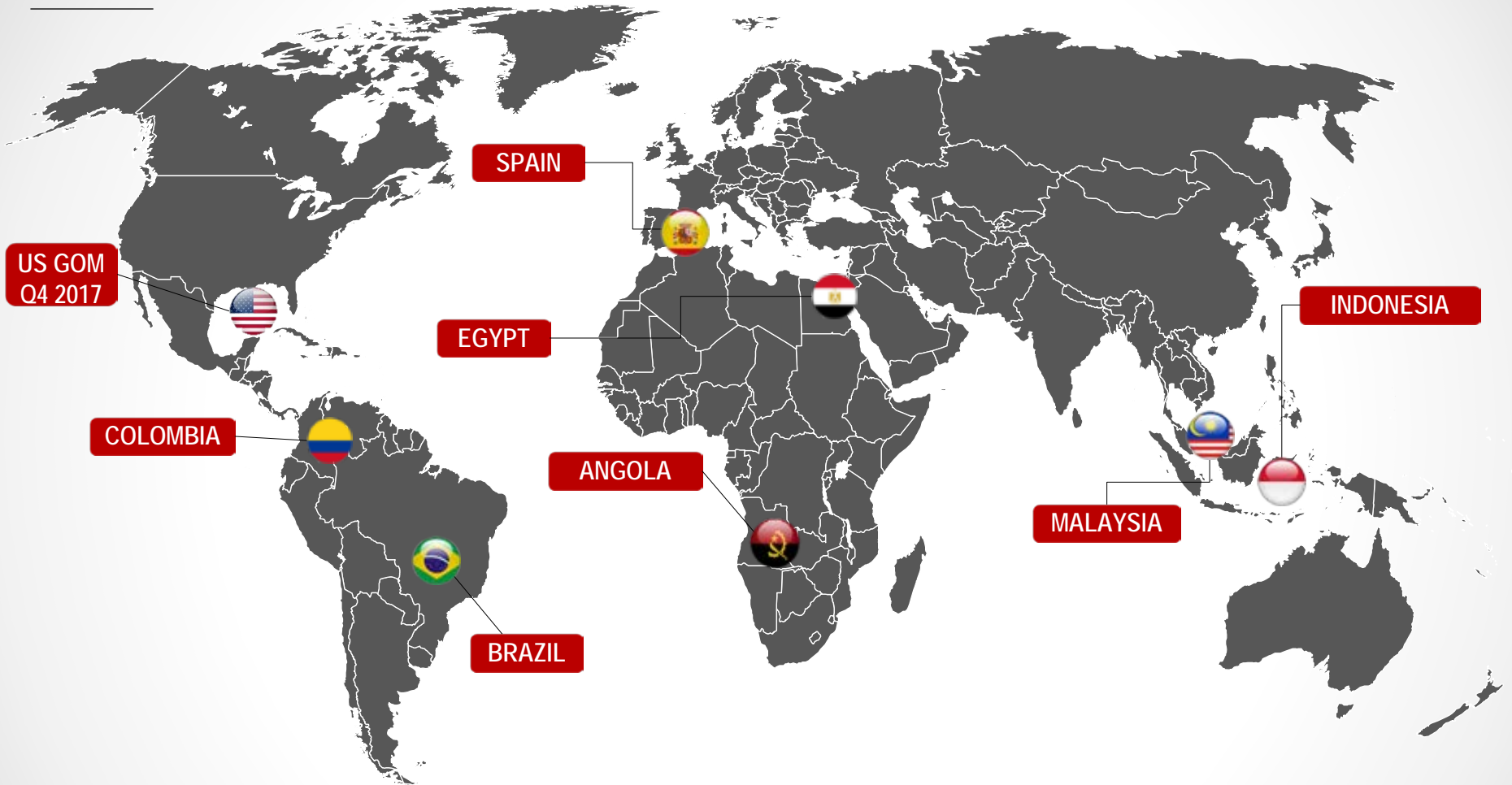
INTEGRATION CHALLENGES

- Ownership
- Delivery
- Riser Integration
- Required Equipment
- Standardization
- Specifications

SOLUTIONS

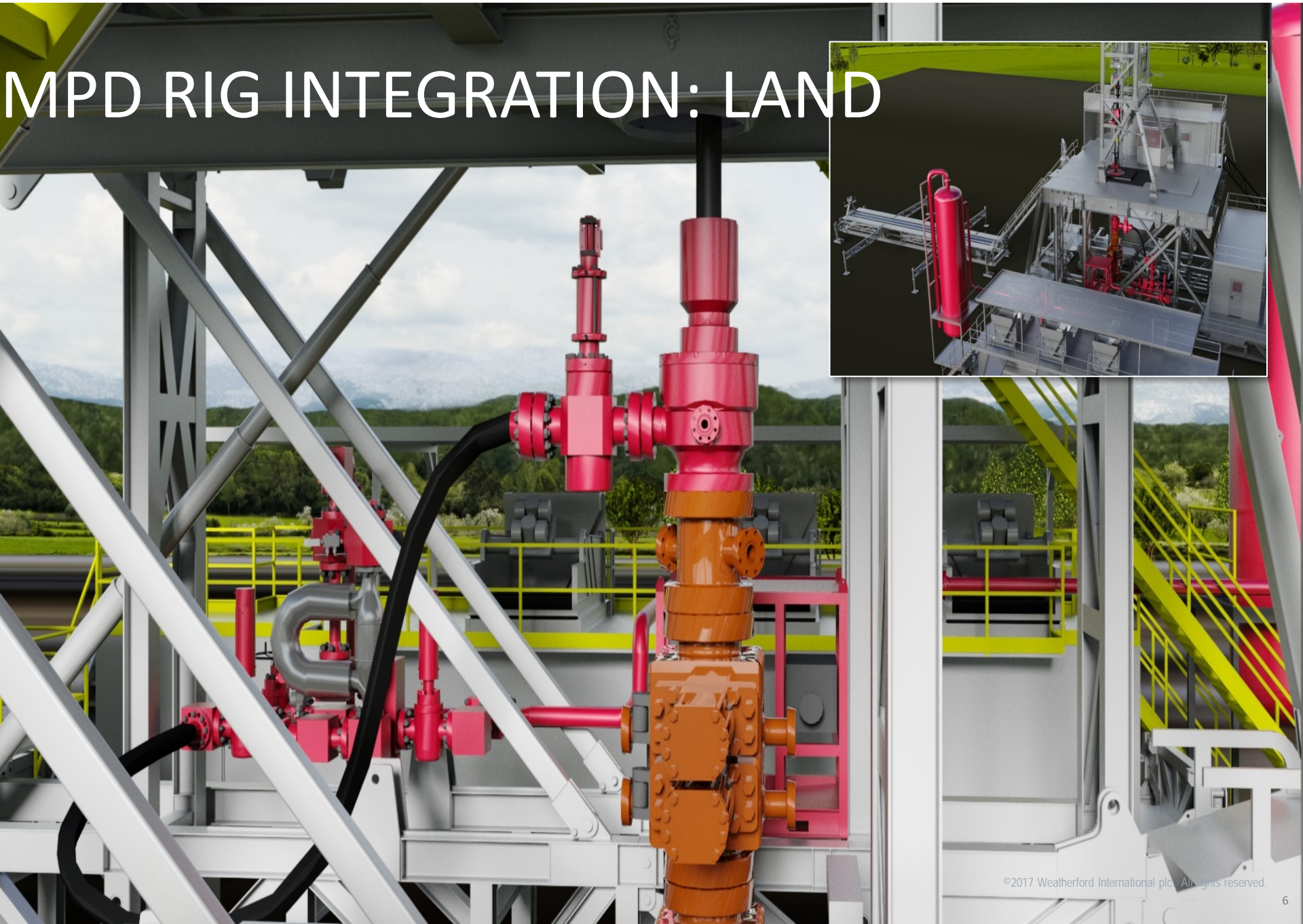
- Define Minimum Requirements
- Rig Preparation
- Reducing Footprint
- Integrated Systems
- Equipment

WEATHERFORD EXPERIENCES



50+ Deepwater MPD Wells | **20+** DW MPD Rigs.
10+ Deepwater Contractors | **10+** Deepwater Operators.

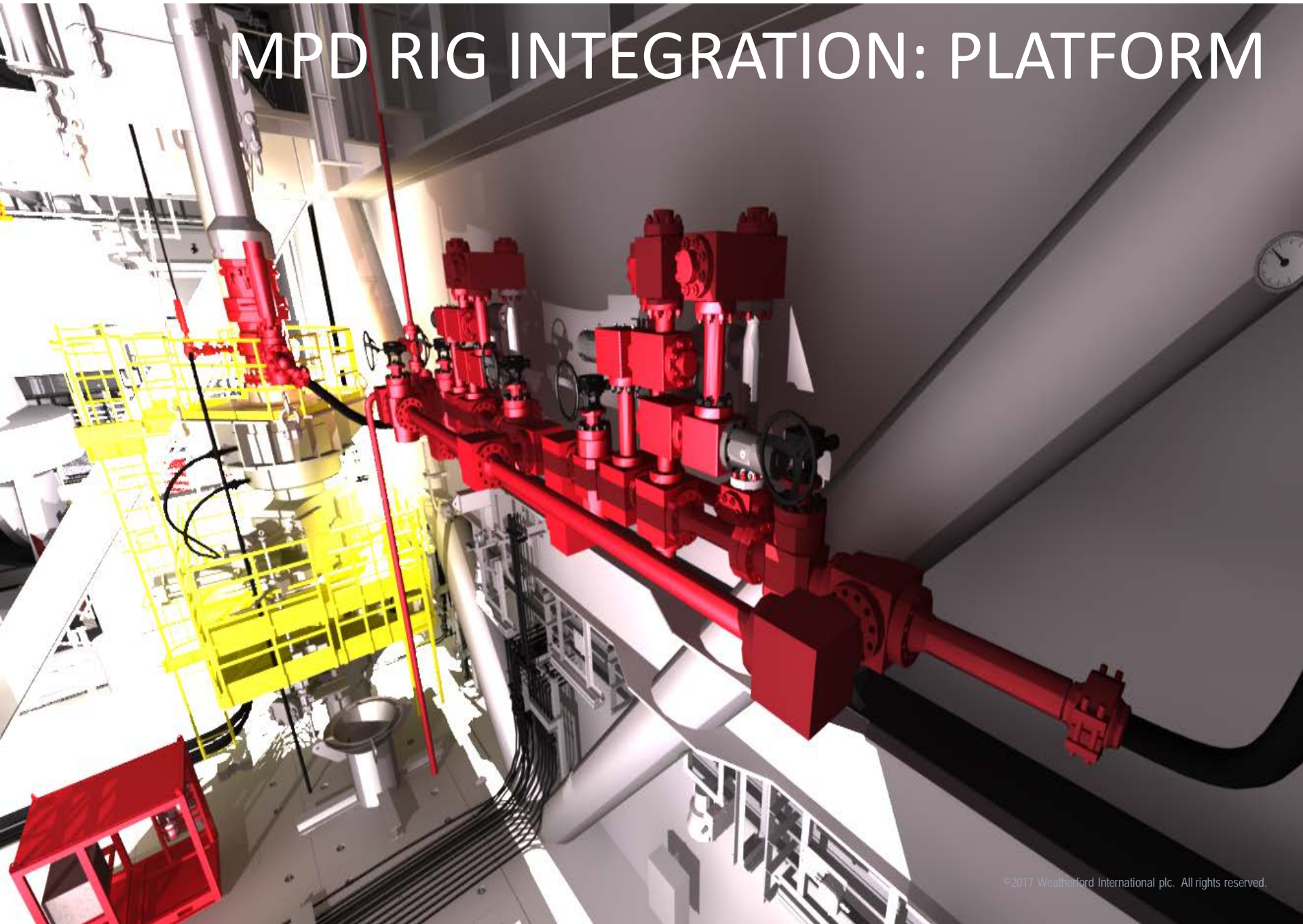
MPD RIG INTEGRATION: LAND



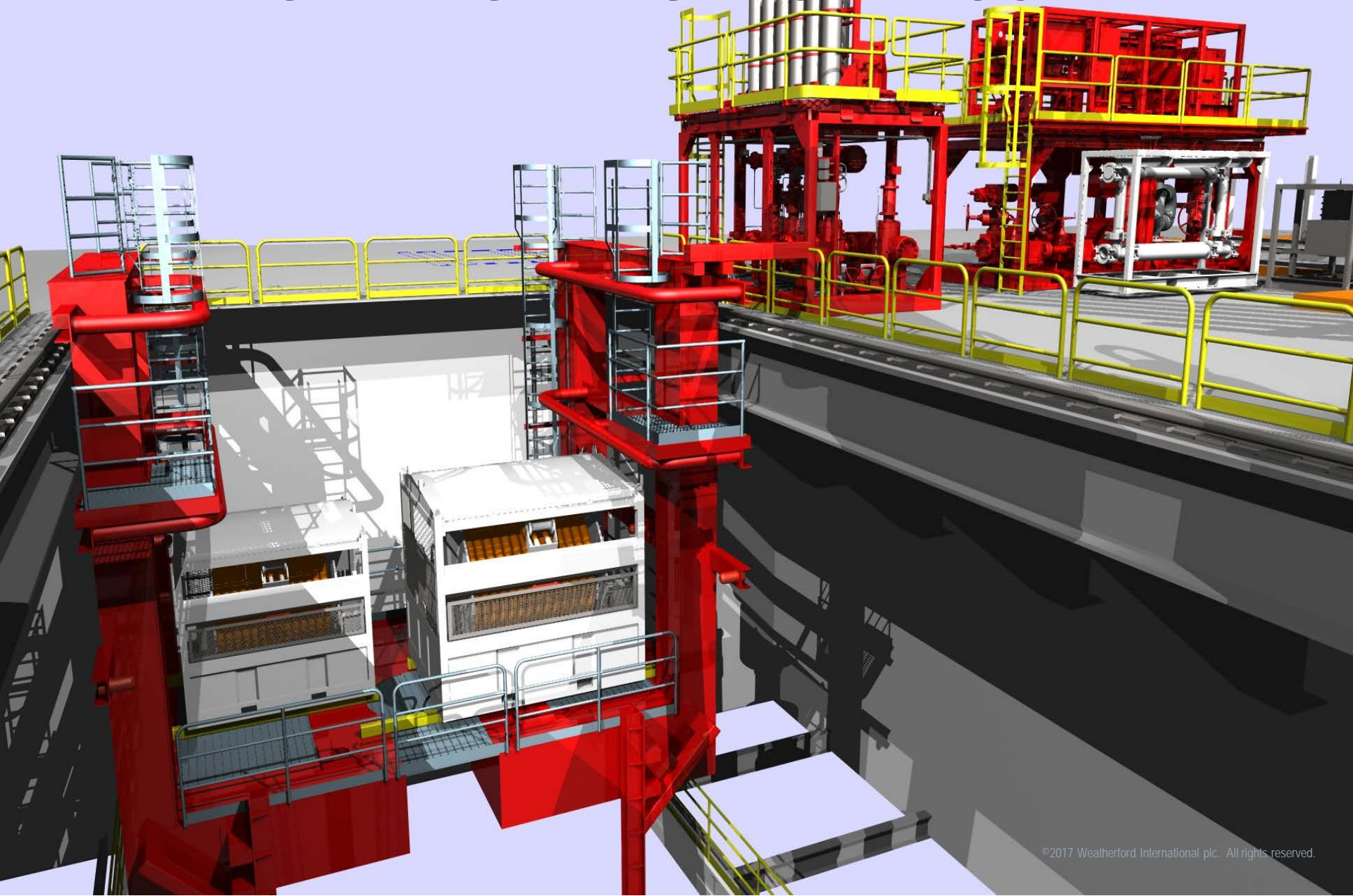
MPD RIG INTEGRATION: JACK-UP



MPD RIG INTEGRATION: PLATFORM



MPD RIG INTEGRATION: SEMI-SUB



RETROFIT MPD INTEGRATION (SHIPYARD)

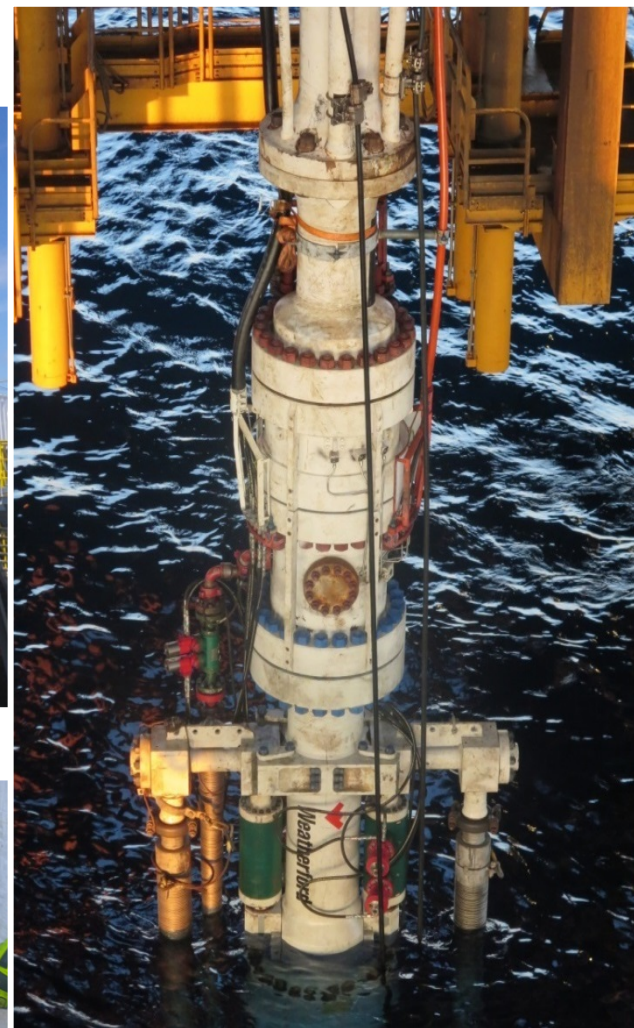


- MPD shipyard and *in situ* integration on 20+ deepwater rigs.

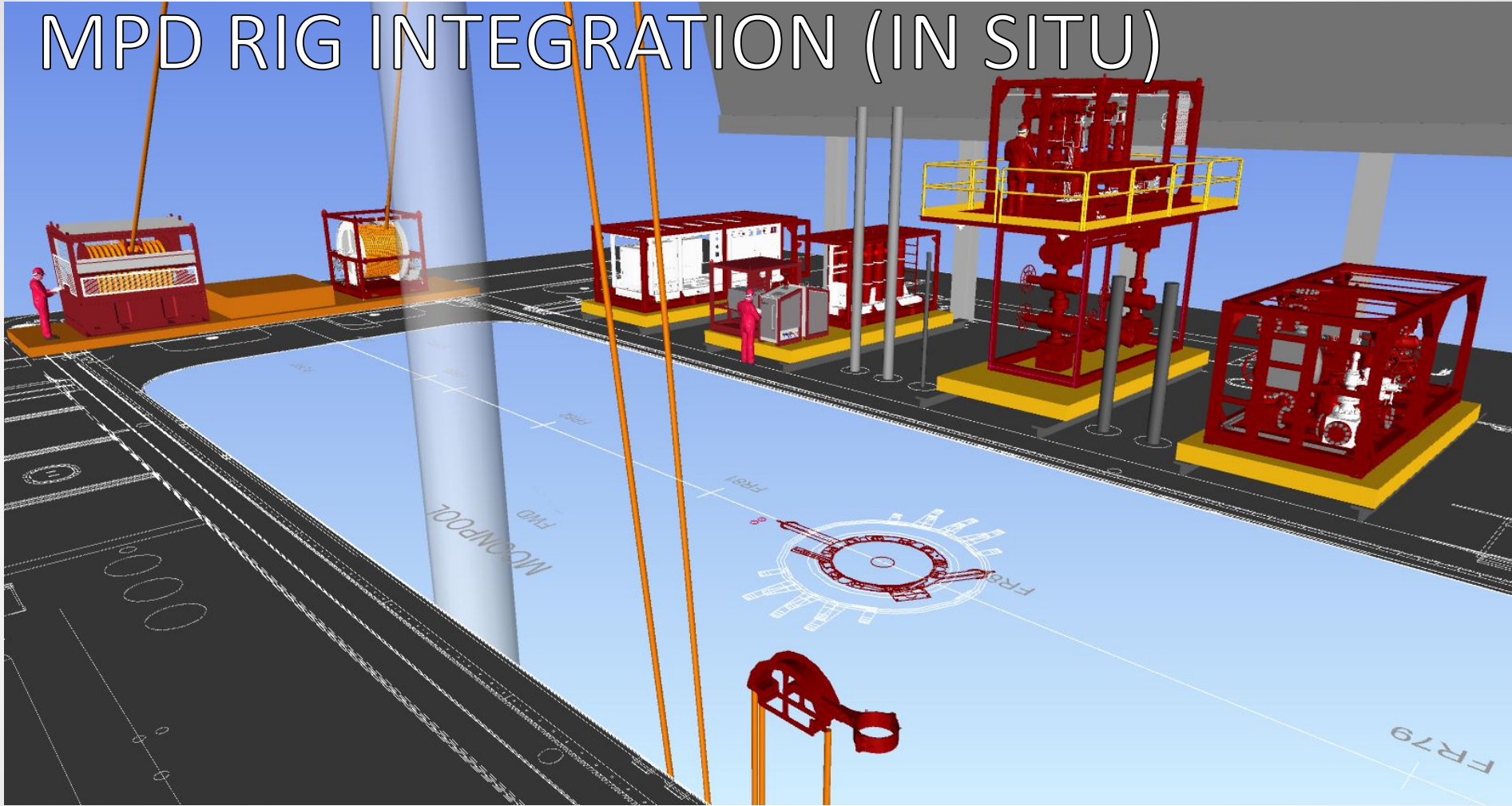
RETROFIT MPD INTEGRATION (RIG IN TRANSIT)



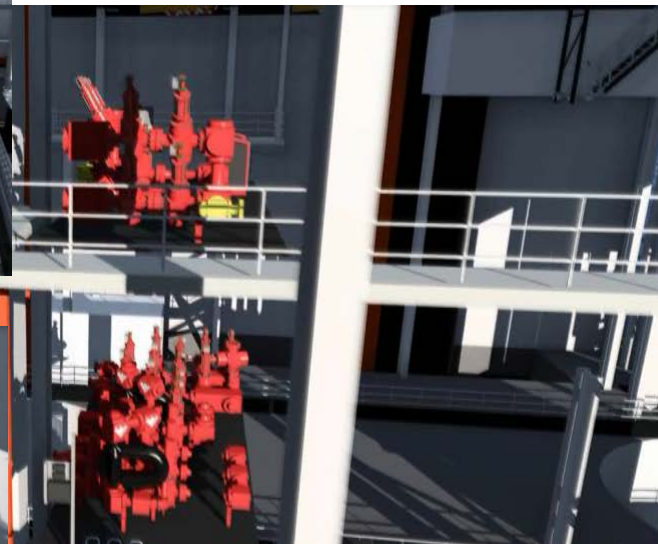
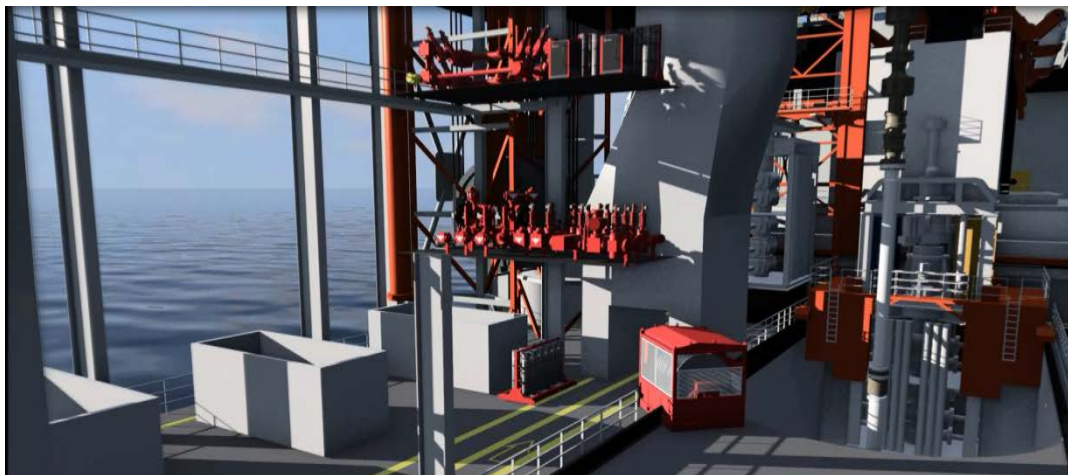
RETROFIT MPD INTEGRATION (IN SITU)



MPD RIG INTEGRATION (IN SITU)



NEW BUILD MPD INTEGRATION



WHERE DO WE GO FROM HERE?

- Standardization and Optimization
- How do we want technology to progress?
- Should we let the market drive the MPD minimum requirements or let the industry define them?



Weatherford[®]