



**IADC**

**IADC  
ISP PROGRAM**

**2016**



**Summary of Occupational  
Incidents  
(South America Land Totals)**

*Issued 1 July 2017*

# Table of Contents

(Table of Contents is Hyperlinked, Just click on Topic & go)

|  |    |
|--|----|
| IADC 2016 SOUTH AMERICA LAND TOTALS (TABLE 1).....                                       | 1  |
| <i>Central/South America Land Total Incidence Rates vs Man-hours (Figure 1)</i> .....    | 1  |
| IADC 2016 SOUTH AMERICA LAND CHARTS.....   | 2  |
| <i>South America Land Total Lost Time Incidents by Month (Chart 1)</i> .....             | 2  |
| <i>South America Land Total Recordable Incidents by Month (Chart 2)</i> .....            | 3  |
| <i>South America Land Total Lost Time Incidents by Occupation (Chart 3)</i> .....        | 4  |
| <i>South America Land Total Recordable Incidents by Occupation (Chart 4)</i> .....       | 5  |
| <i>South America Land Total Lost Time Incidents by Body Part (Chart 5)</i> .....         | 6  |
| <i>South America Land Total Recordable Incidents by Body Part (Chart 6)</i> .....        | 7  |
| <i>South America Land Total Lost Time Incidents by Incident Type (Chart 7)</i> .....     | 8  |
| <i>South America Land Total Recordable Incidents by Incident Type (Chart 8)</i> .....    | 9  |
| <i>South America Land Total Lost Time Incidents by Equipment (Chart 9)</i> .....         | 10 |
| <i>South America Land Total Recordable Incidents by Equipment (Chart 10)</i> .....       | 11 |
| <i>South America Land Total Lost Time Incidents by Operation (Chart 11)</i> .....        | 12 |
| <i>South America Land Total Recordable Incidents by Operation (Chart 12)</i> .....       | 13 |
| <i>South America Land Total Lost Time Incidents by Location (Chart 13)</i> .....         | 14 |
| <i>South America Land Total Recordable Incidents by Location (Chart 14)</i> .....        | 15 |
| <i>South America Land Total Lost Time Incidents by Time in Service (Chart 15)</i> .....  | 16 |
| <i>South America Land Total Recordable Incidents by Time in Service (Chart 16)</i> ..... | 17 |
| <i>South America Land Total Lost Time Incidents by Time of Day (Chart 17)</i> .....      | 18 |
| <i>South America Land Total Recordable Incidents by Time of Day (Chart 18)</i> .....     | 19 |
| <i>South America Land Total Lost Time Incidents by Age (Chart 19)</i> .....              | 20 |
| <i>South America Land Total Recordable Incidents by Age (Chart 20)</i> .....             | 21 |

# IADC 2016 South America Land Totals (Table 1)

|                                   | <u>Total</u> |
|-----------------------------------|--------------|
| Total Manhours                    | 11,885,011   |
| Total Medical Treatment Incidents | 7            |
| Total Restricted Work Incidents   | 19           |
| Total Lost Time Incidents         | 16           |
| Total Fatalities                  | 0            |
| Total Recordables                 | 42           |
| MTO Incidence Rate                | 0.12         |
| RWC Incidence Rate                | 0.32         |
| LTI Incidence Rate                | 0.27         |
| LTI Frequency Rate                | 1.35         |
| DART Incidence Rate               | 0.59         |
| DART Frequency Rate               | 2.94         |
| Recordable Incidence Rate         | 0.71         |
| Recordable Frequency Rate         | 3.53         |

Companies Reporting: Land – 9

Medical Treatment Incidence Rate = MTOs X 200,000

Restricted Work Incidence Rate = RWCs X 200,000

Lost Time Incidence Rate = LTIs + FTLs X 200,000

DART Incidence Rate = LTIs + RWC X 200,000

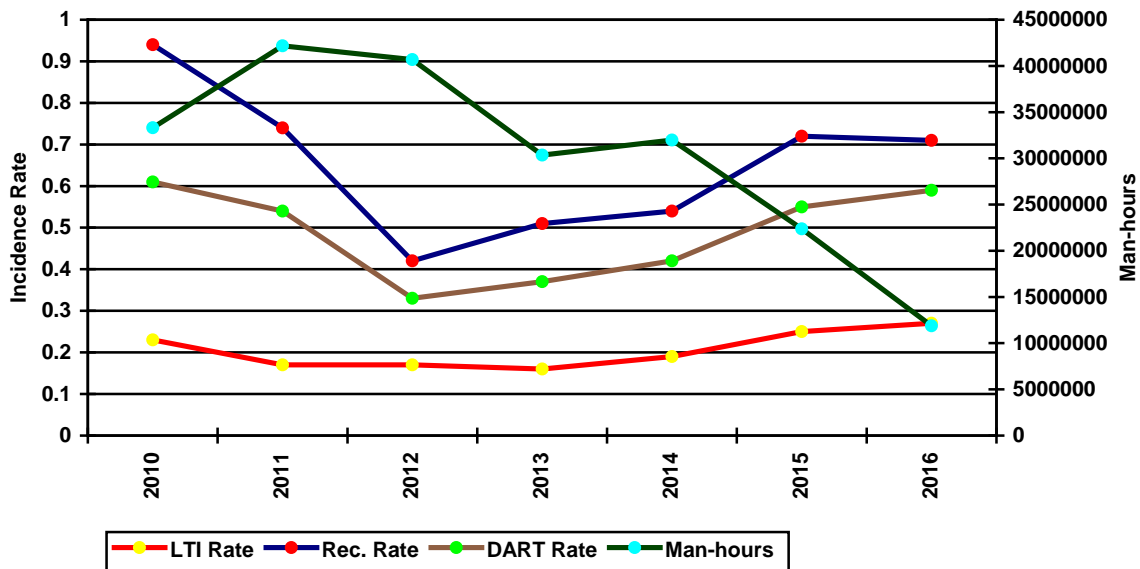
Recordable Incidence Rate = RCRD X 200,000

Lost Time Frequency Rate = LTIs +FTLs X 1,000,000

DART Frequency Rate = LTIs + RWC X 1,000,000

Recordable Frequency Rate = RCRD X 1,000,000

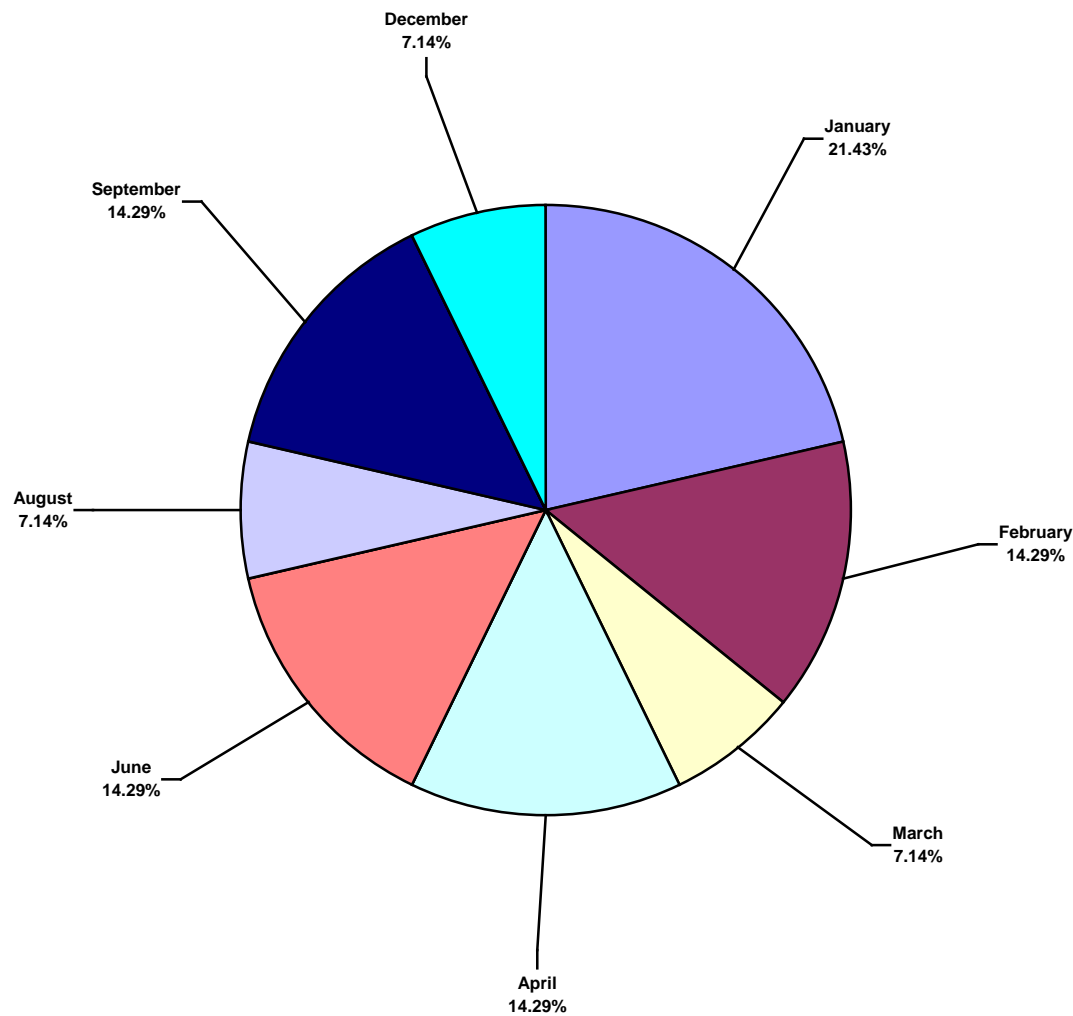
South America Land Total Incidence Rates vs Man-hours (Figure 1)



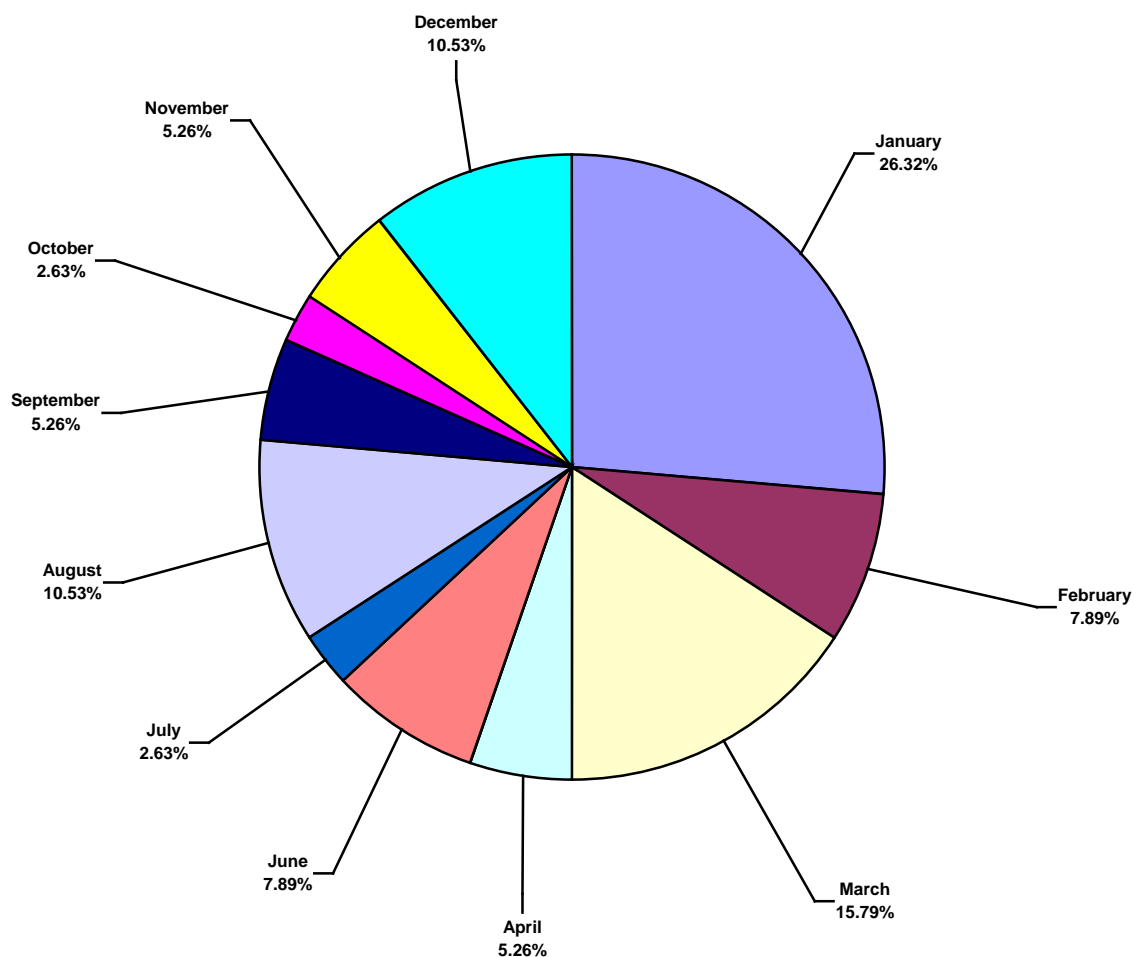
# IADC 2016 South America Land Charts

## South America Land Total Lost Time Incidents by Month (Chart 1)

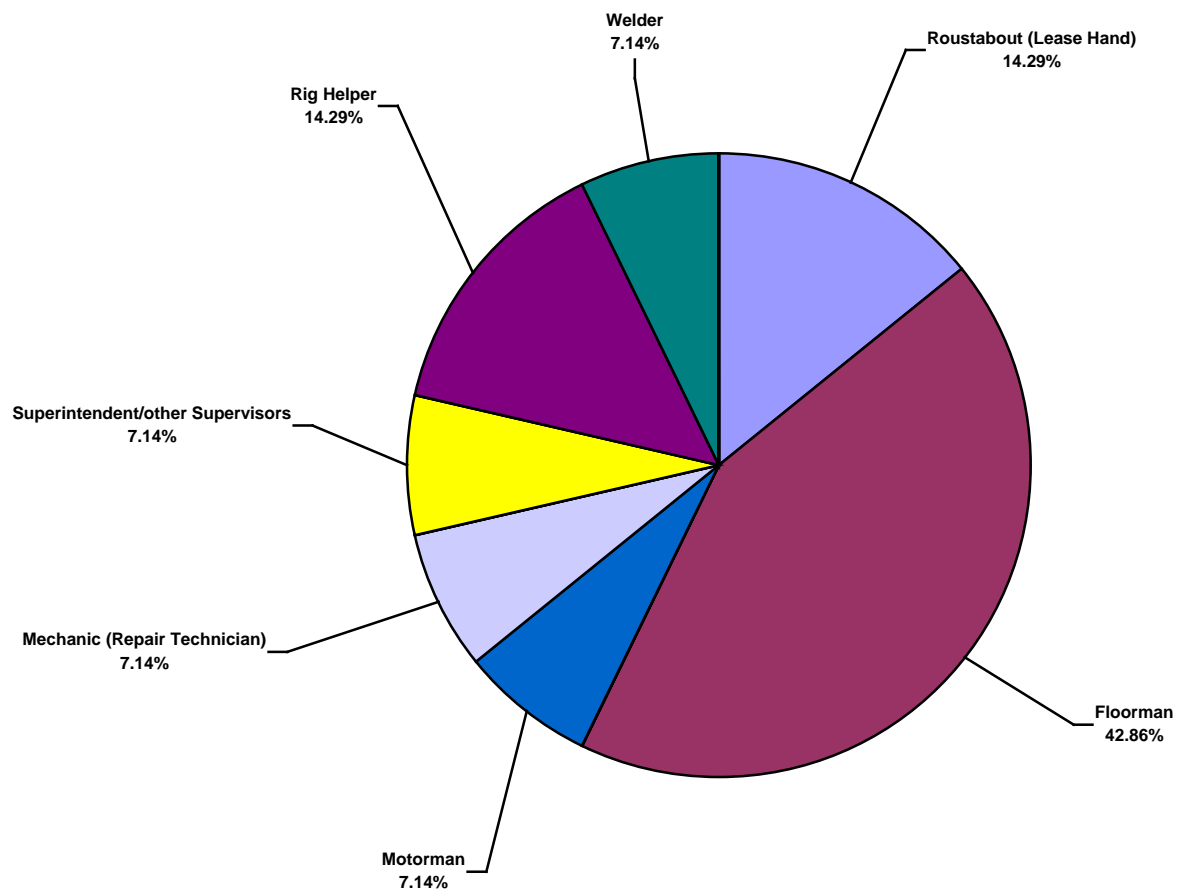
Based on 14 Incidents



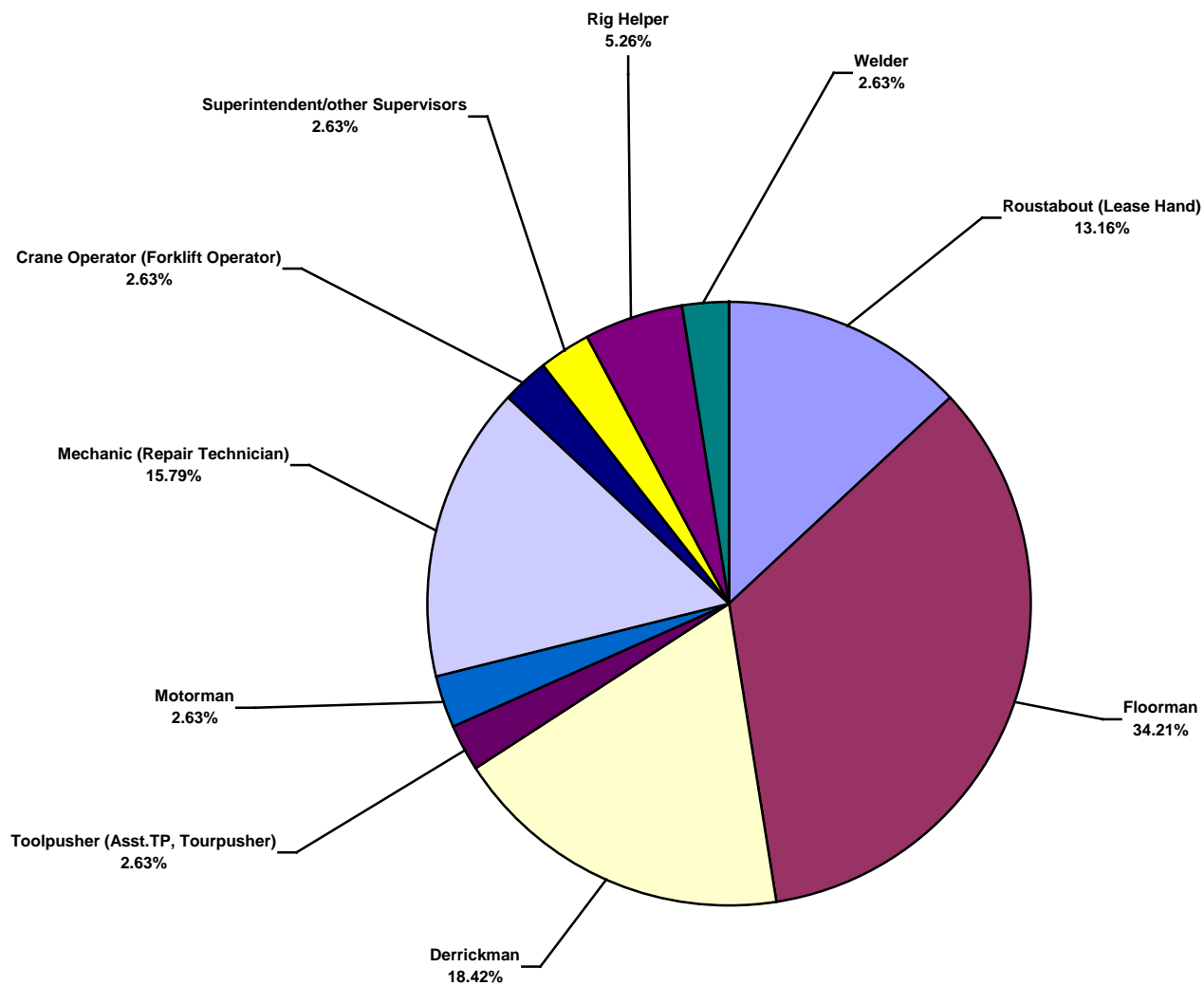
**South America Land Total Recordable Incidents by Month (Chart 2)**  
Based on 38 Incidents



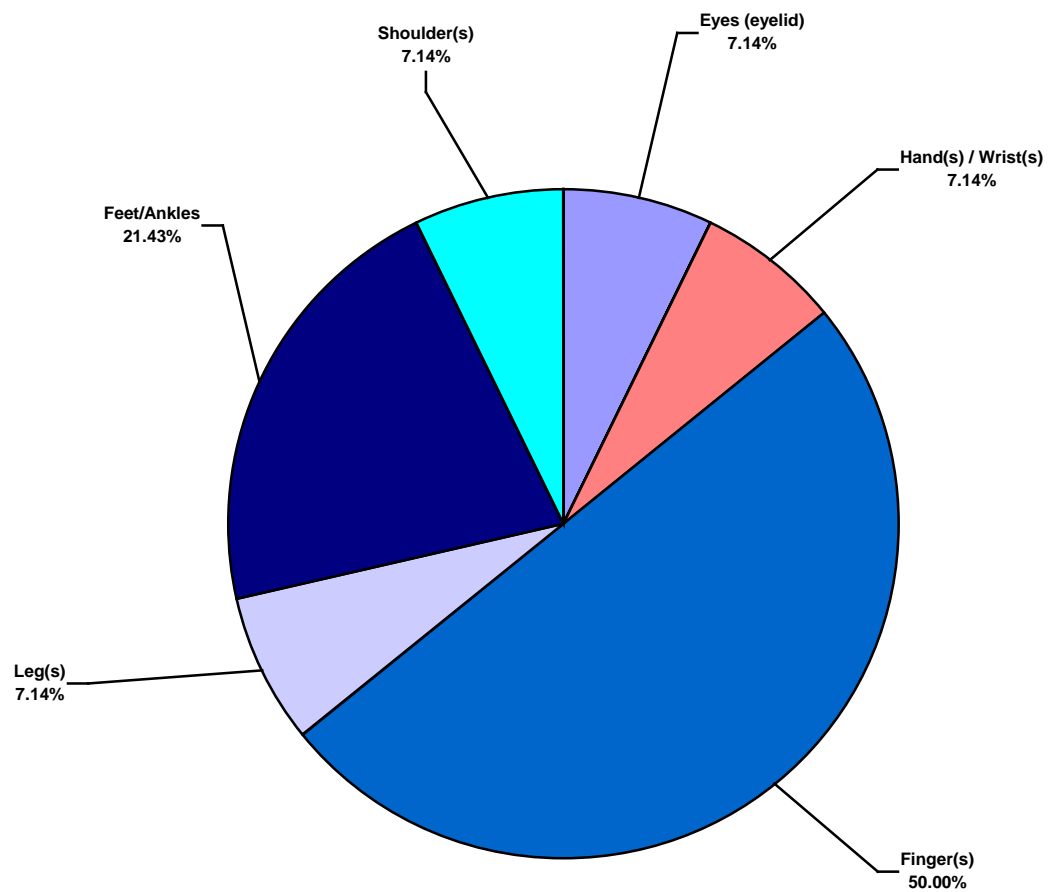
South America Land Total Lost Time Incidents by Occupation (Chart 3)  
Based on 14 Incidents



**South America Land Total Recordable Incidents by Occupation (Chart 4)**  
Based on 38 Incidents

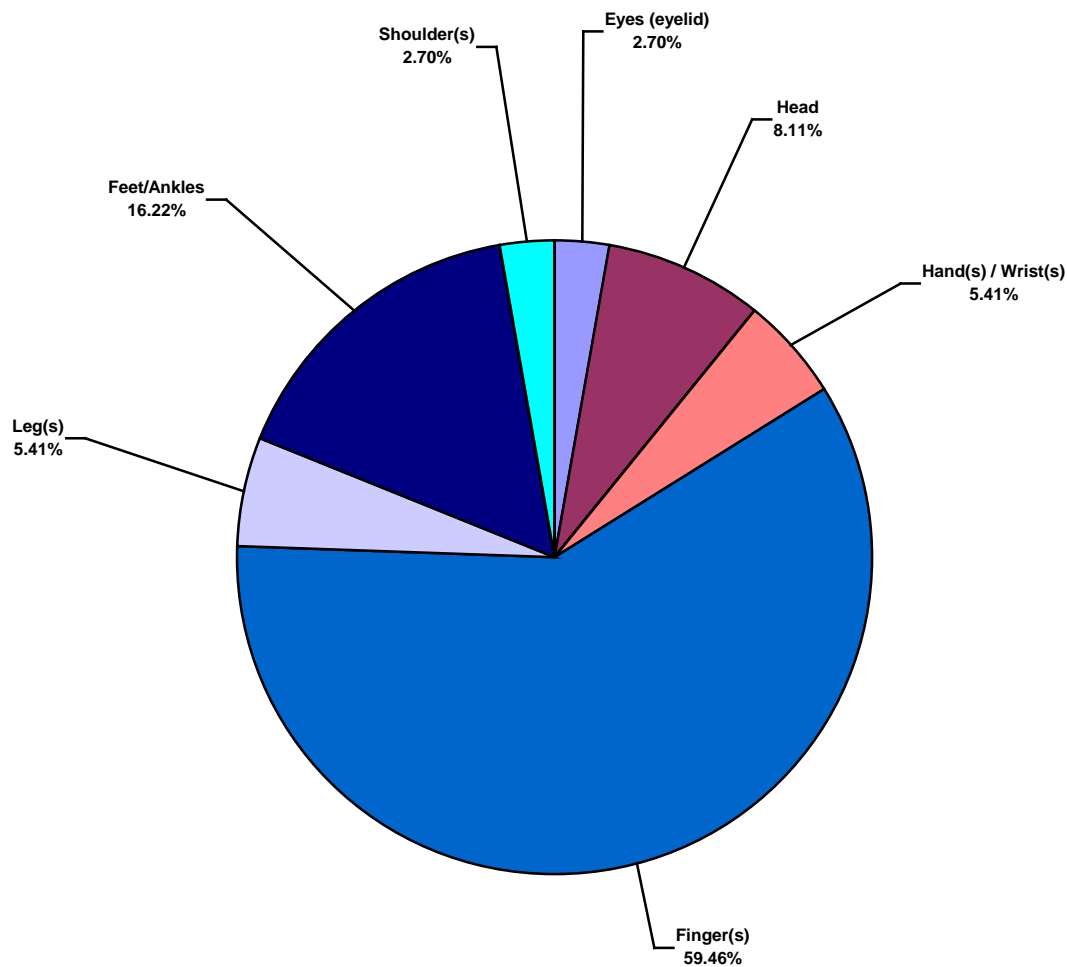


**South America Land Total Lost Time Incidents by Body Part (Chart 5)**  
Based on 14 Incidents

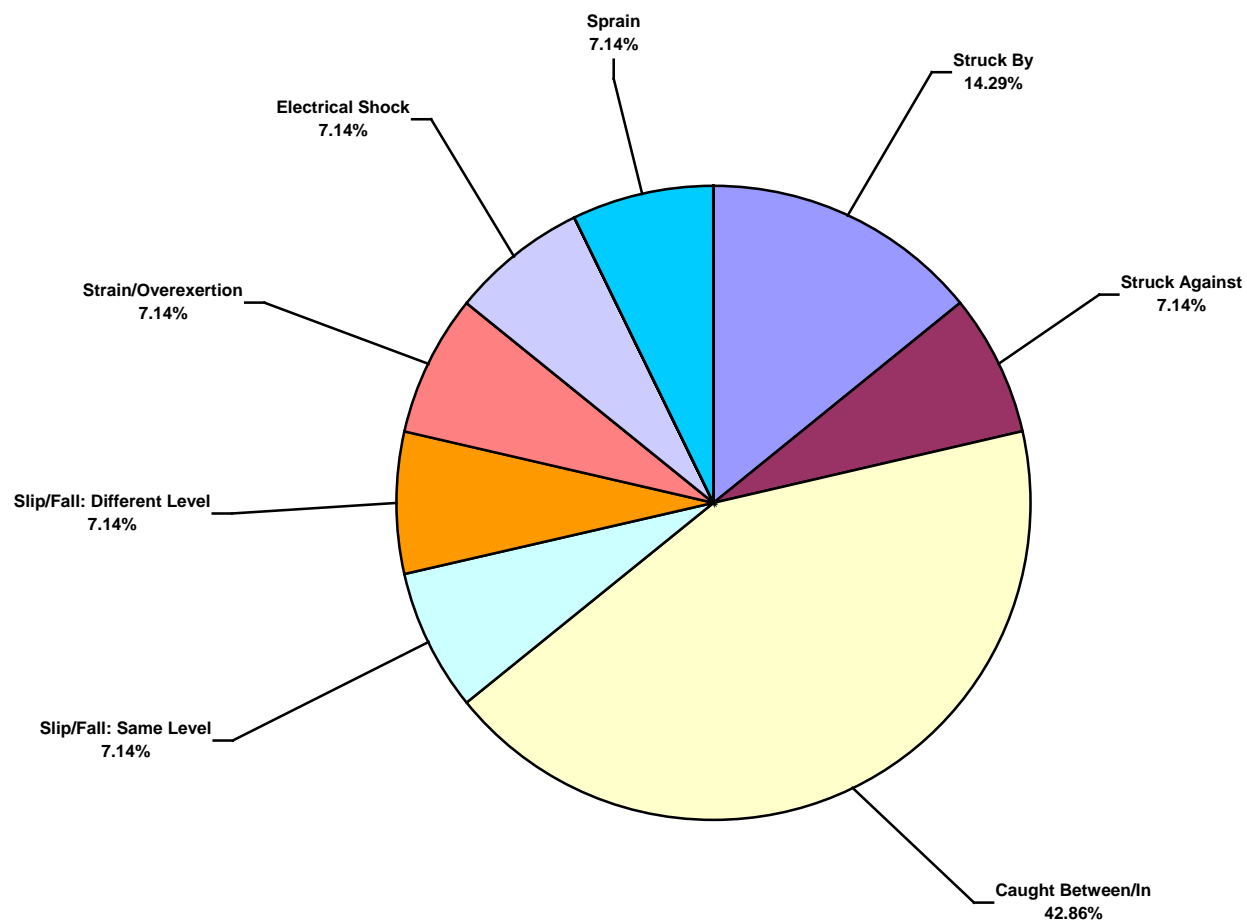




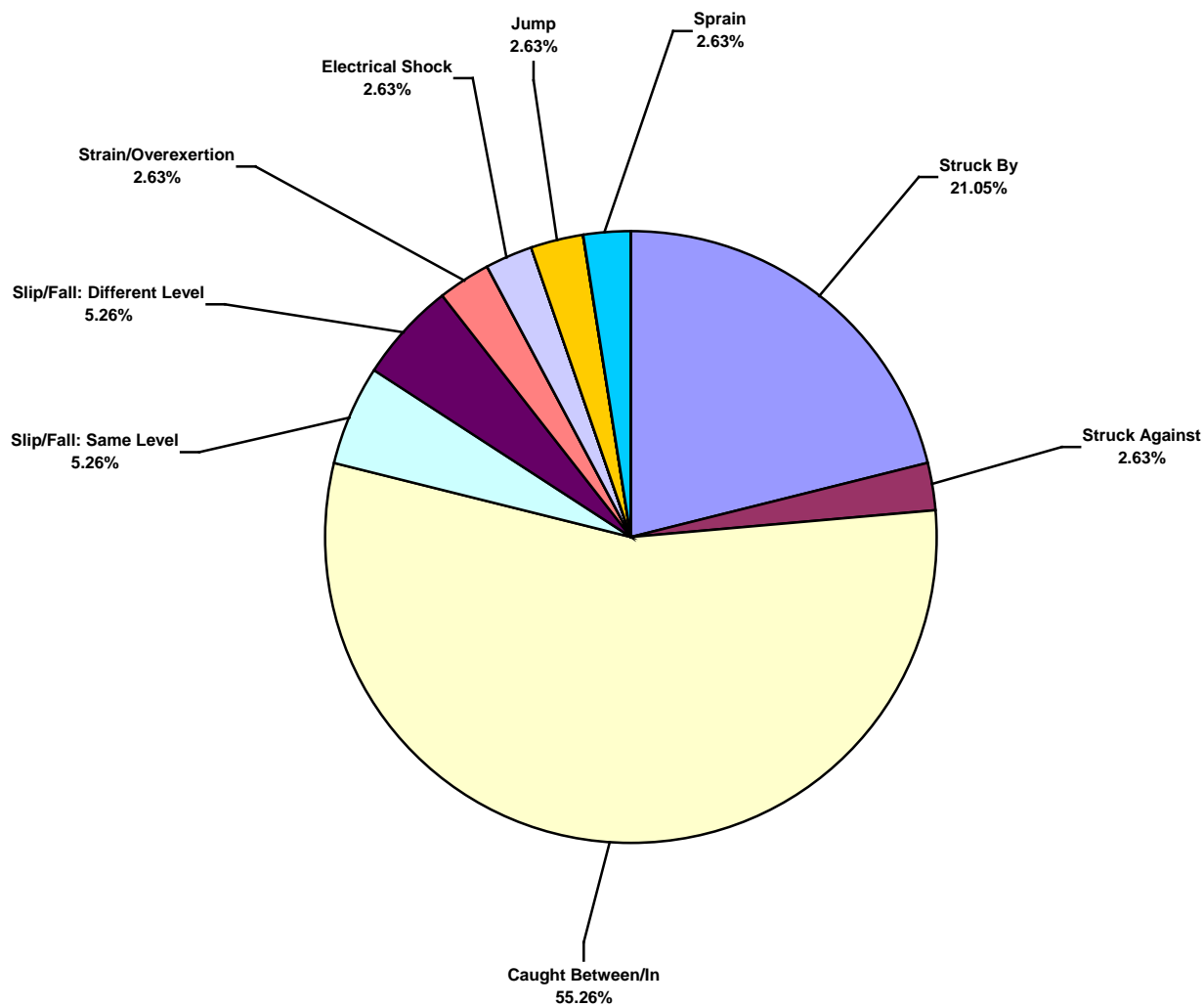
South America Land Total Recordable Incidents by Body Part (Chart 6)  
Based on 37 Incidents



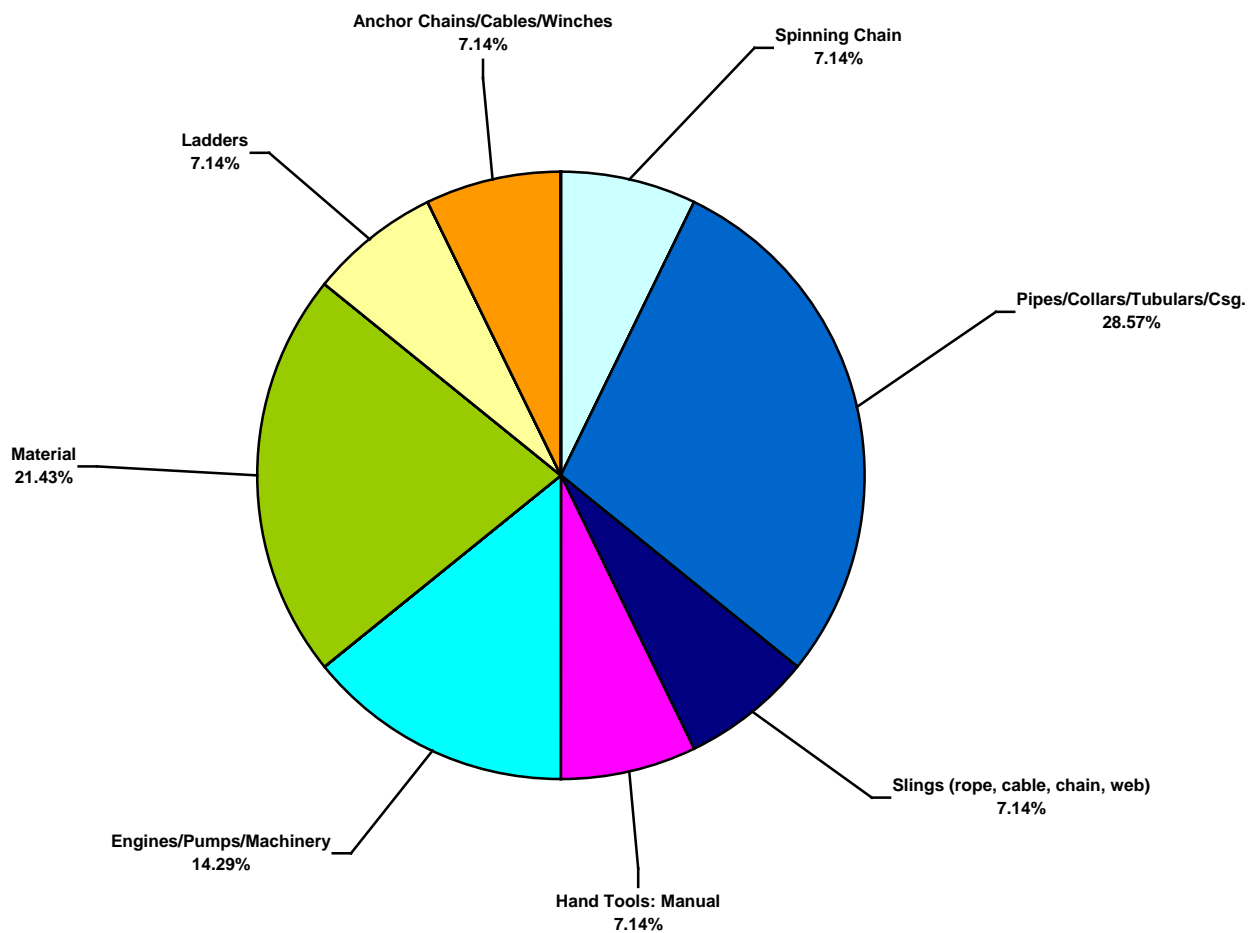
South America Land Total Lost Time Incidents by Incident Type (Chart 7)  
Based on 14 Incidents



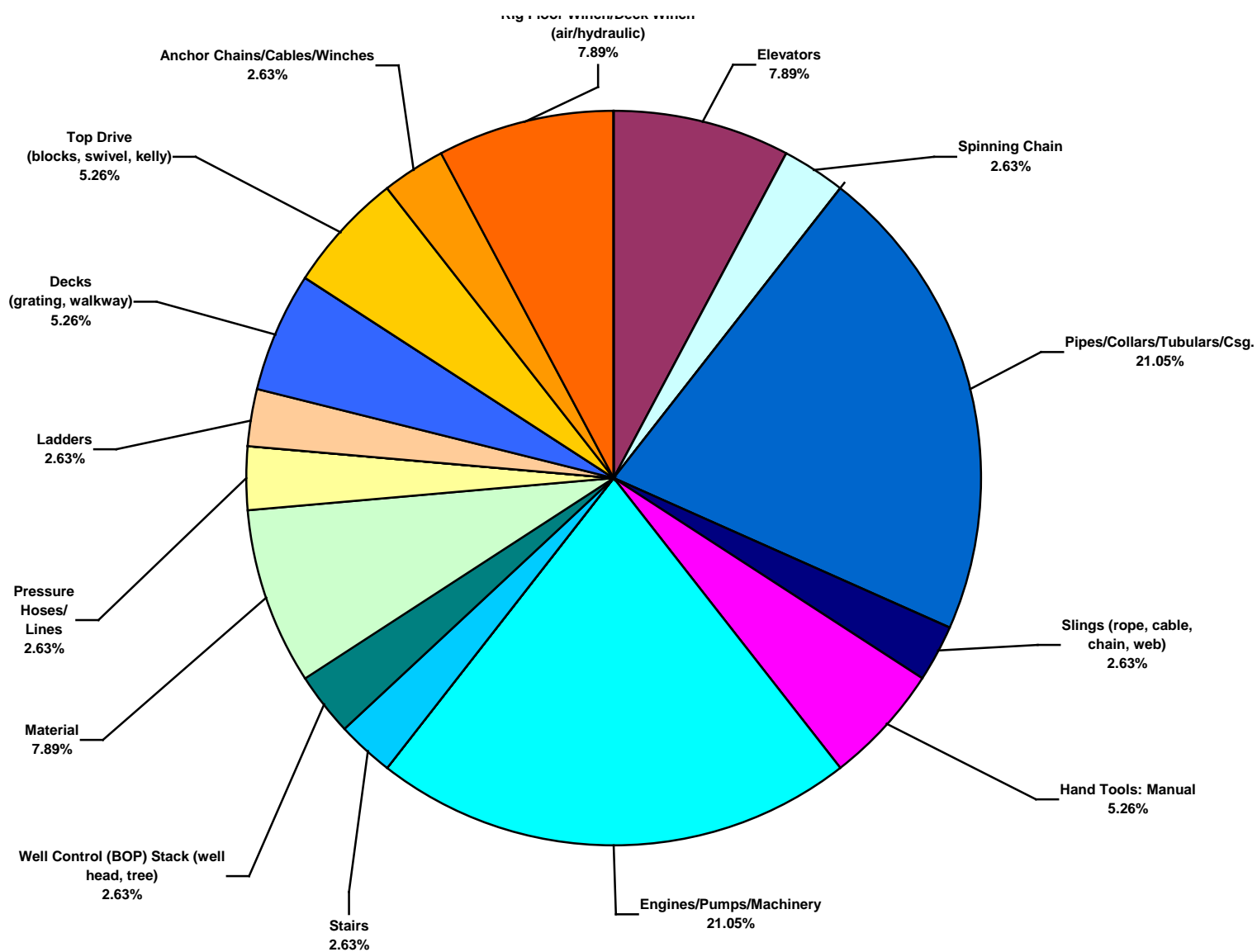
South America Land Total Recordable Incidents by Incident Type (Chart 8)  
Based on 38 Incidents



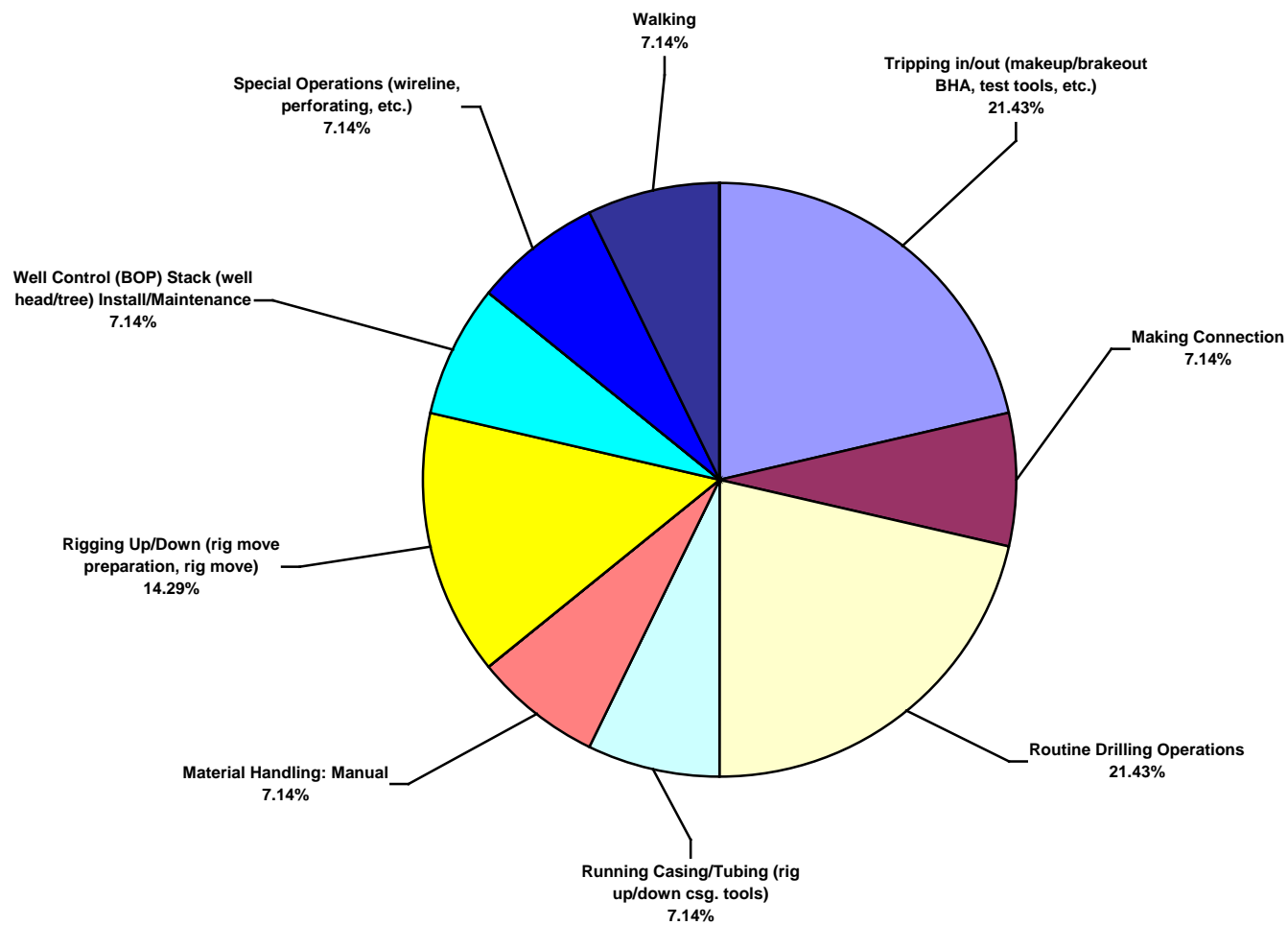
South America Land Total Lost Time Incidents by Equipment (Chart 9)  
Based on 14 Incidents



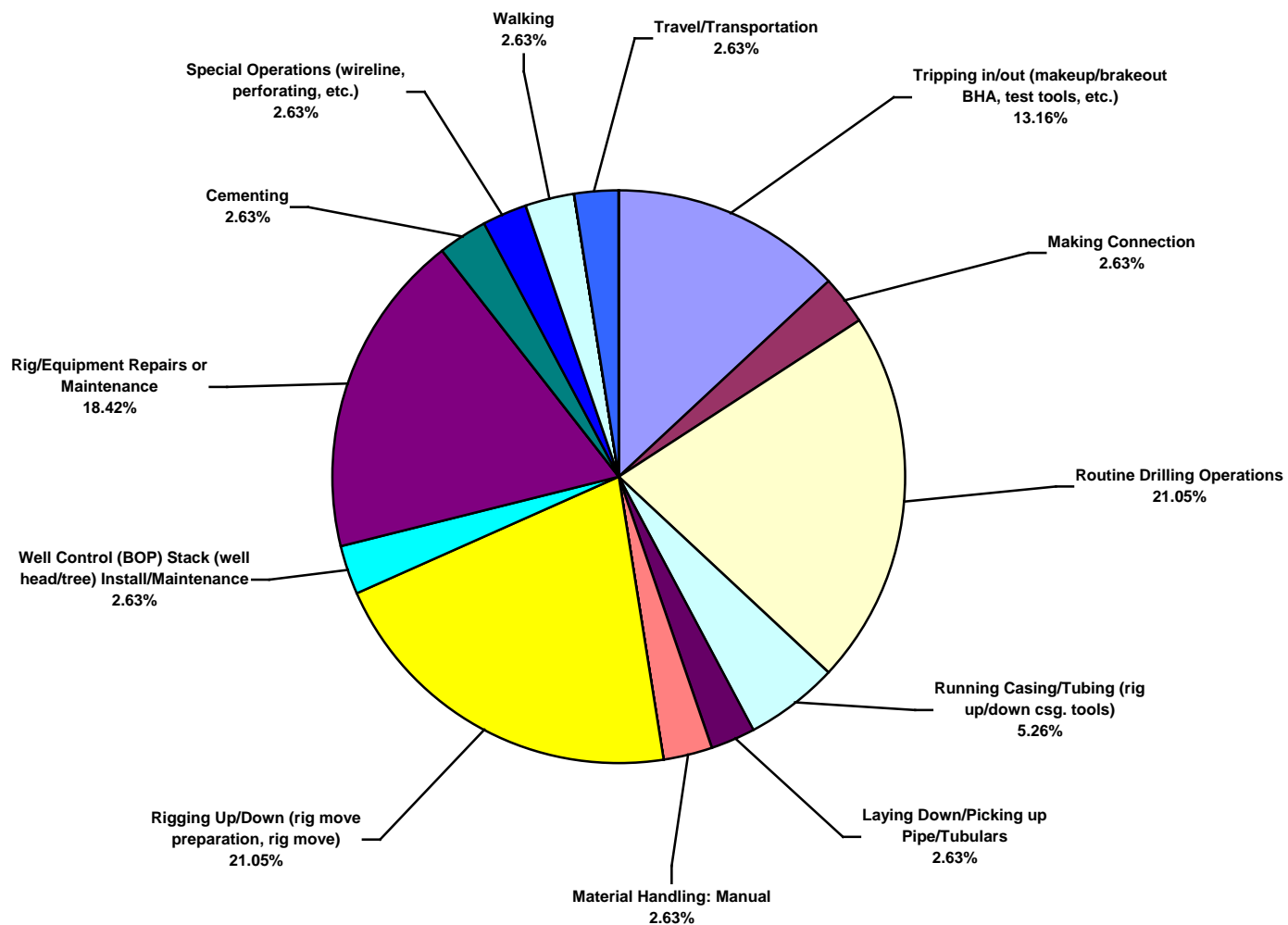
**South America Land Total Recordable Incidents by Equipment (Chart 10)**  
Based on 38 Incidents



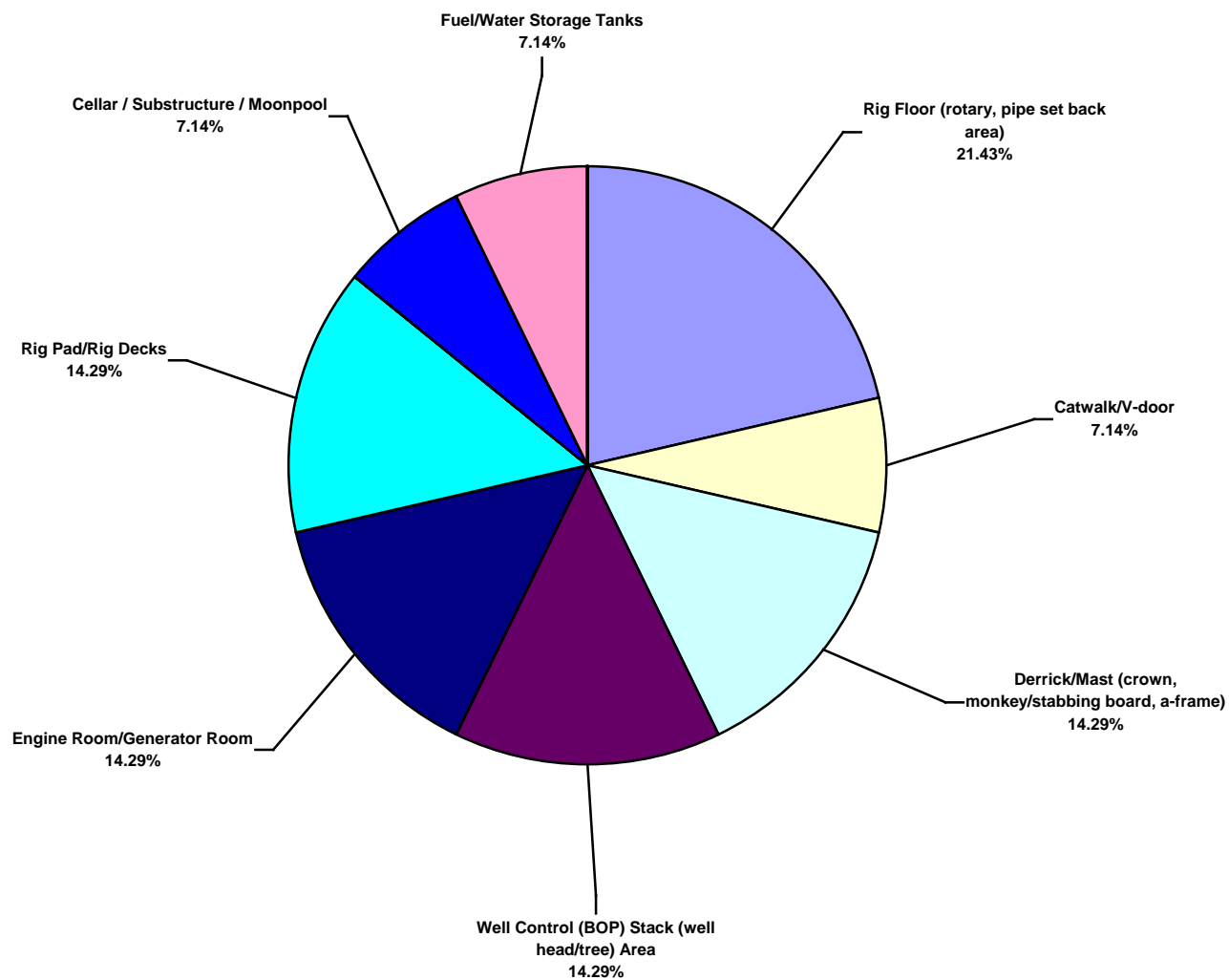
**South America Land Total Lost Time Incidents by Operation (Chart 11)**  
Based on 14 Incidents



**South America Land Total Recordable Incidents by Operation (Chart 12)**  
Based on 38 Incidents

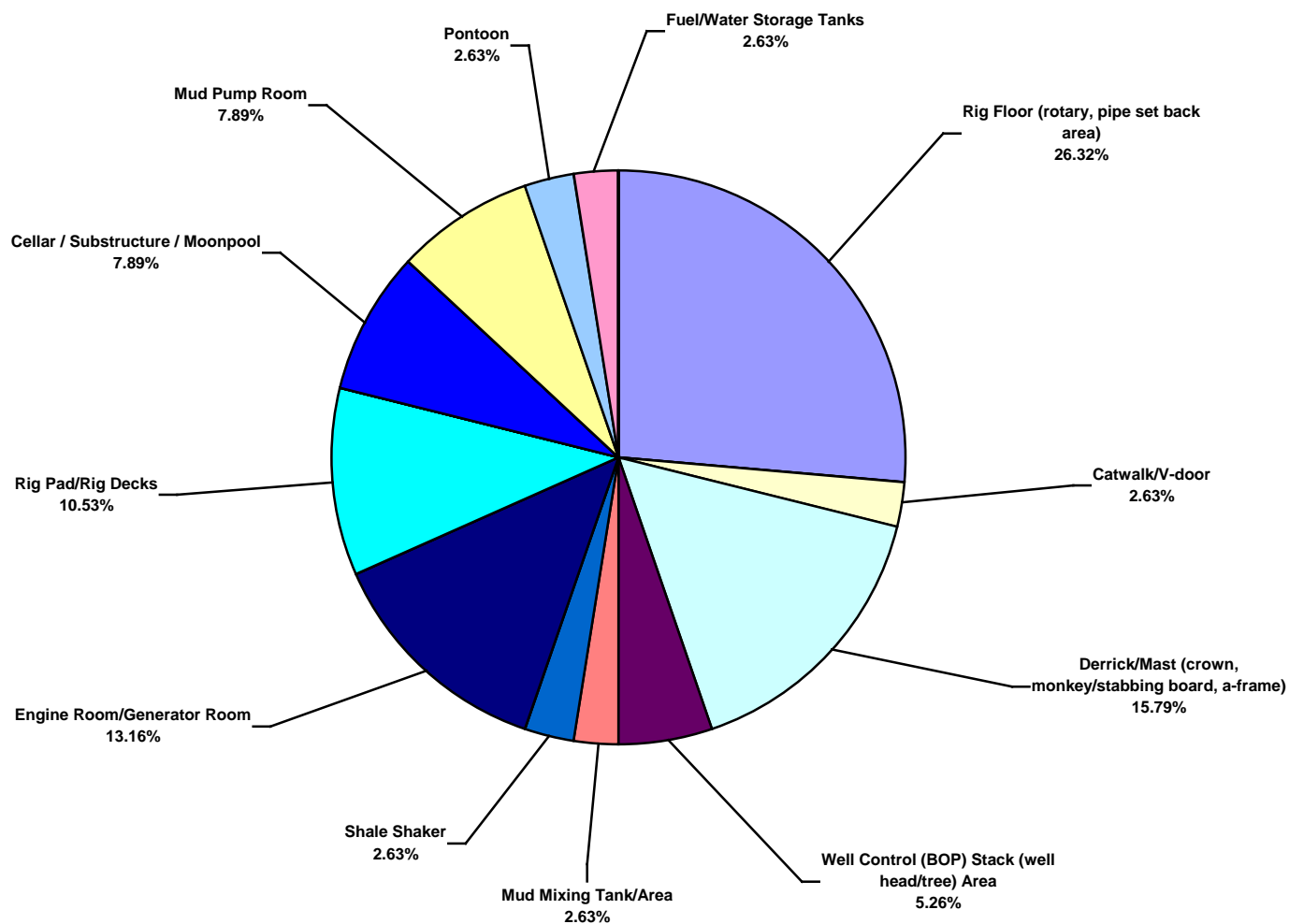


**South America Land Total Lost Time Incidents by Location (Chart 13)**  
Based on 14 Incidents

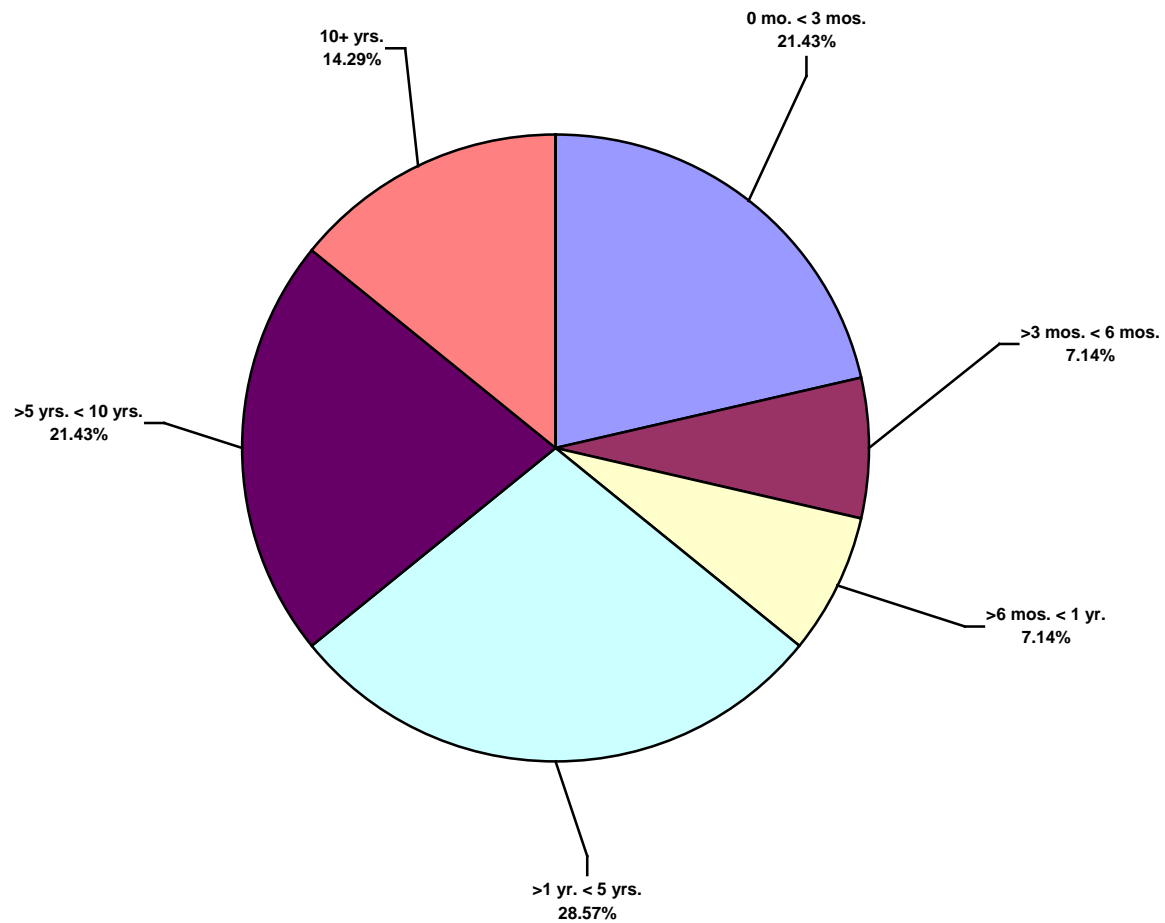




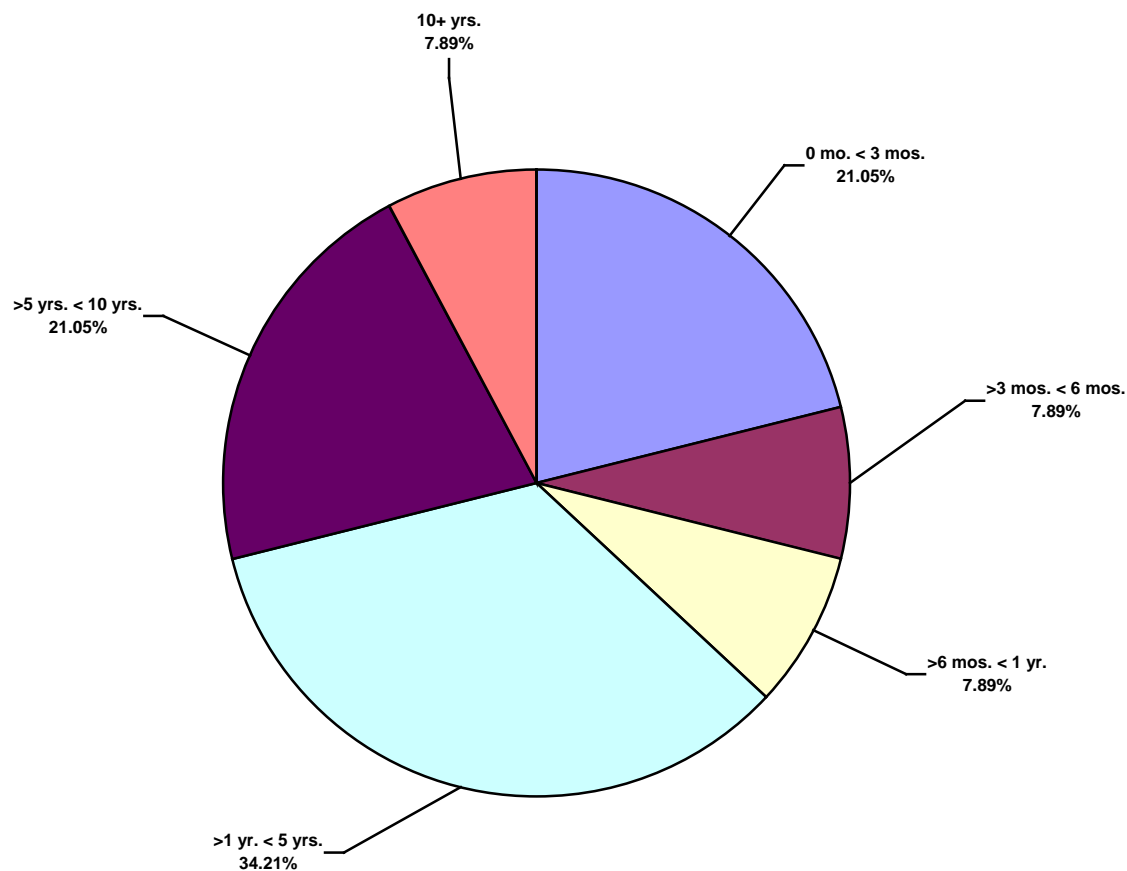
**South America Land Total Recordable Incidents by Location (Chart 14)**  
Based on 38 Incidents



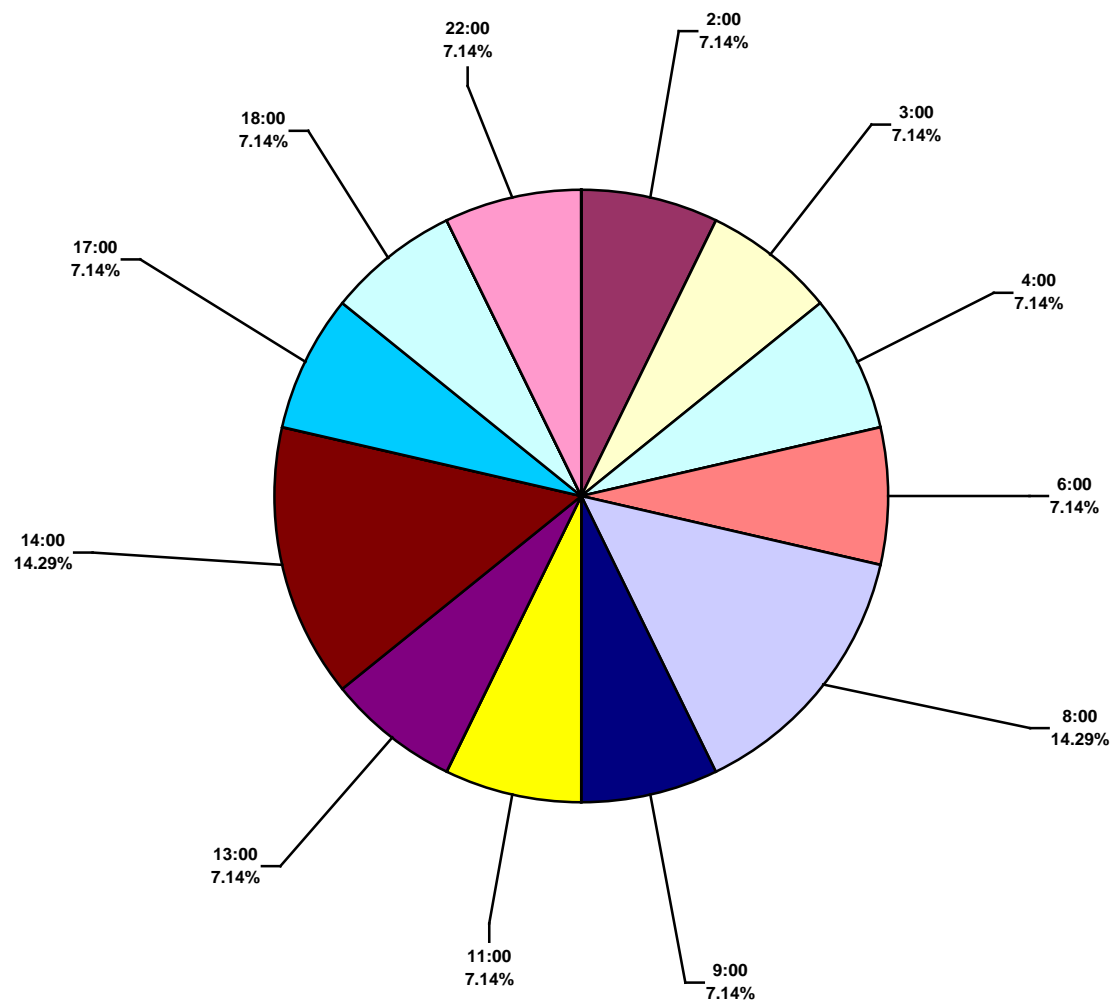
South America Land Total Lost Time Incidents by Time in Service (Chart 15)  
Based on 14 Incidents



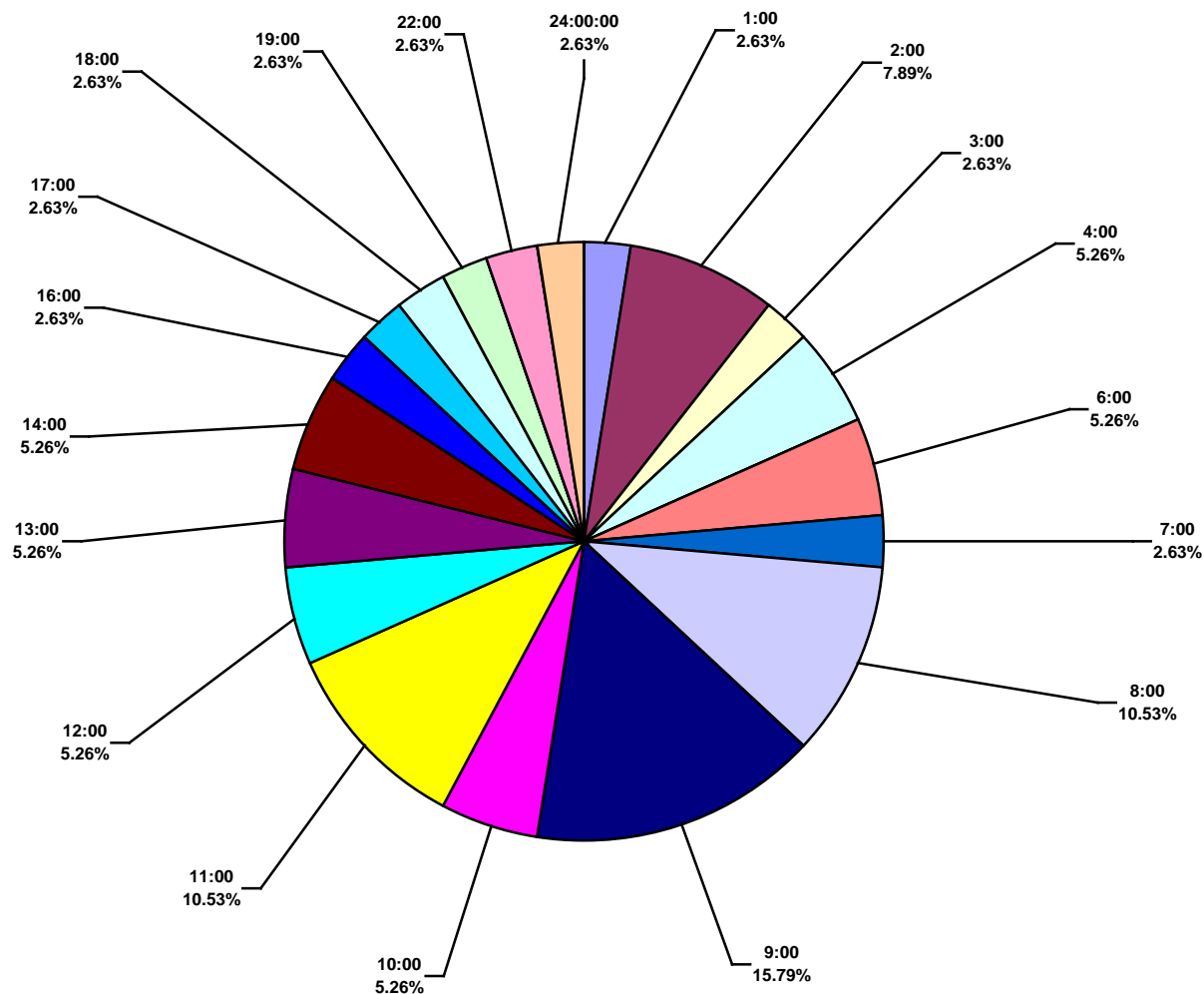
South America Land Total Recordable Incidents by Time in Service (Chart 16)  
Based on 38 Incidents



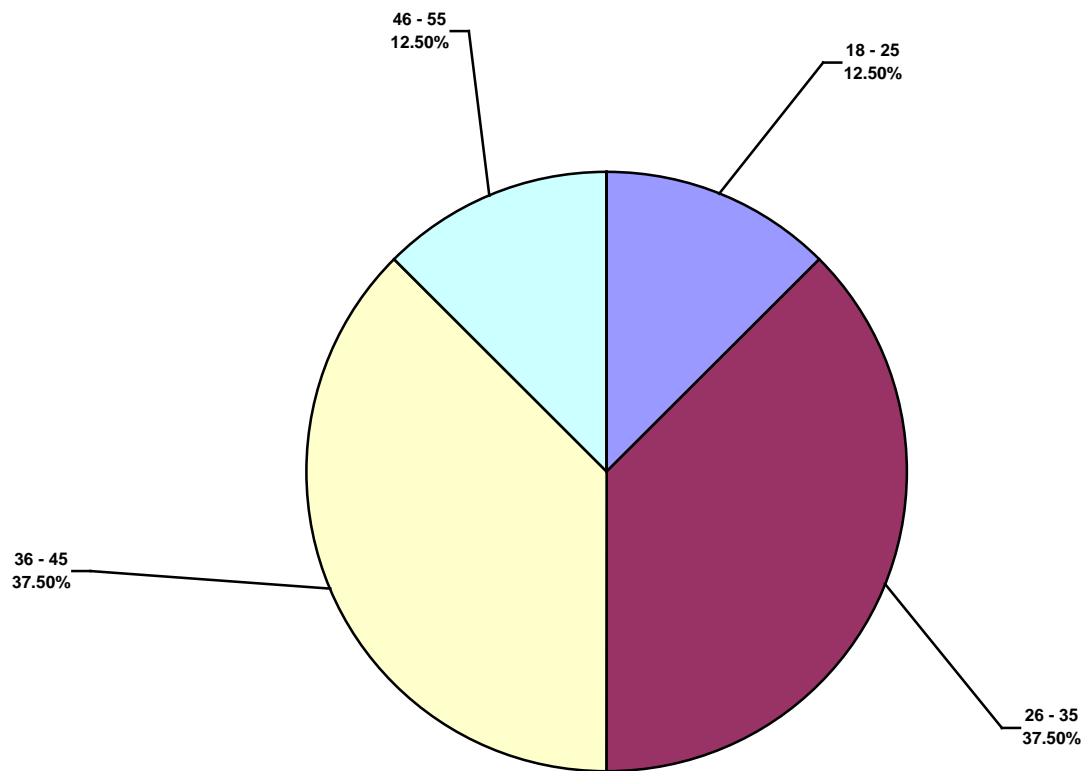
**South America Land Total Lost Time Incidents by Time of Day (Chart 17)**  
Based on 14 Incidents



**South America Land Total Recordable Incidents by Time of Day (Chart 18)**  
Based on 38 Incidents



**South America Land Total Lost Time Incidents by Age (Chart 19)**  
Based on 8 Incidents



**South America Land Total Recordable Incidents by Age (Chart 20)**  
Based on 26 Incidents

