

Alarm Management Overview for IADC ART Subcommittee – July 30, 2015



Mike Lyssy

aesolns.com

Agenda

- What is Alarm Management?
- What is the Process of Alarm Management?
- What are Benefits of Alarm Management?
- What Services are Offered by General Vendors

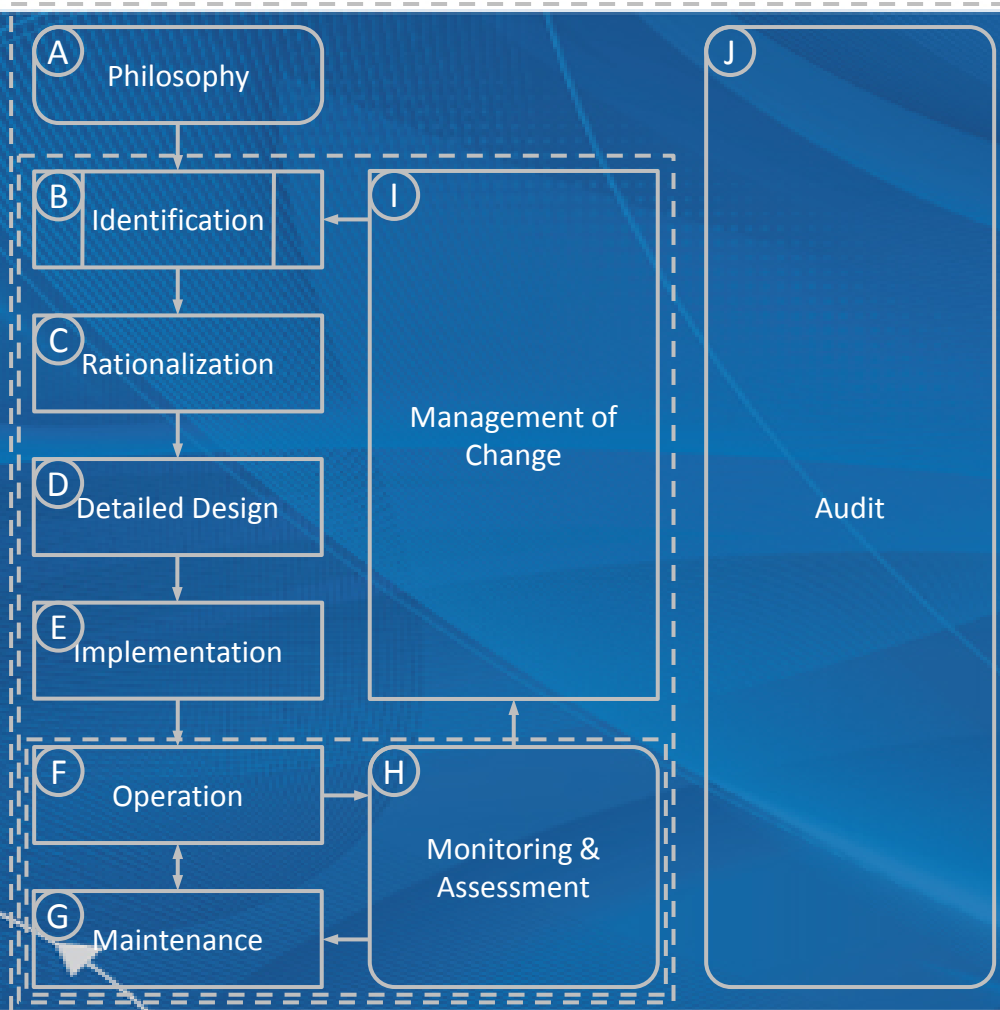
What is Alarm Management

- Alarm management is the processes and practices for determining, documenting, designing, operating, monitoring, and maintaining alarm systems. (ANSI/ISA-18.2-2009, Clause 3.1.14)
- Characterized by the application of:
 - System design principles
 - Good engineering practices
 - Human factors principles

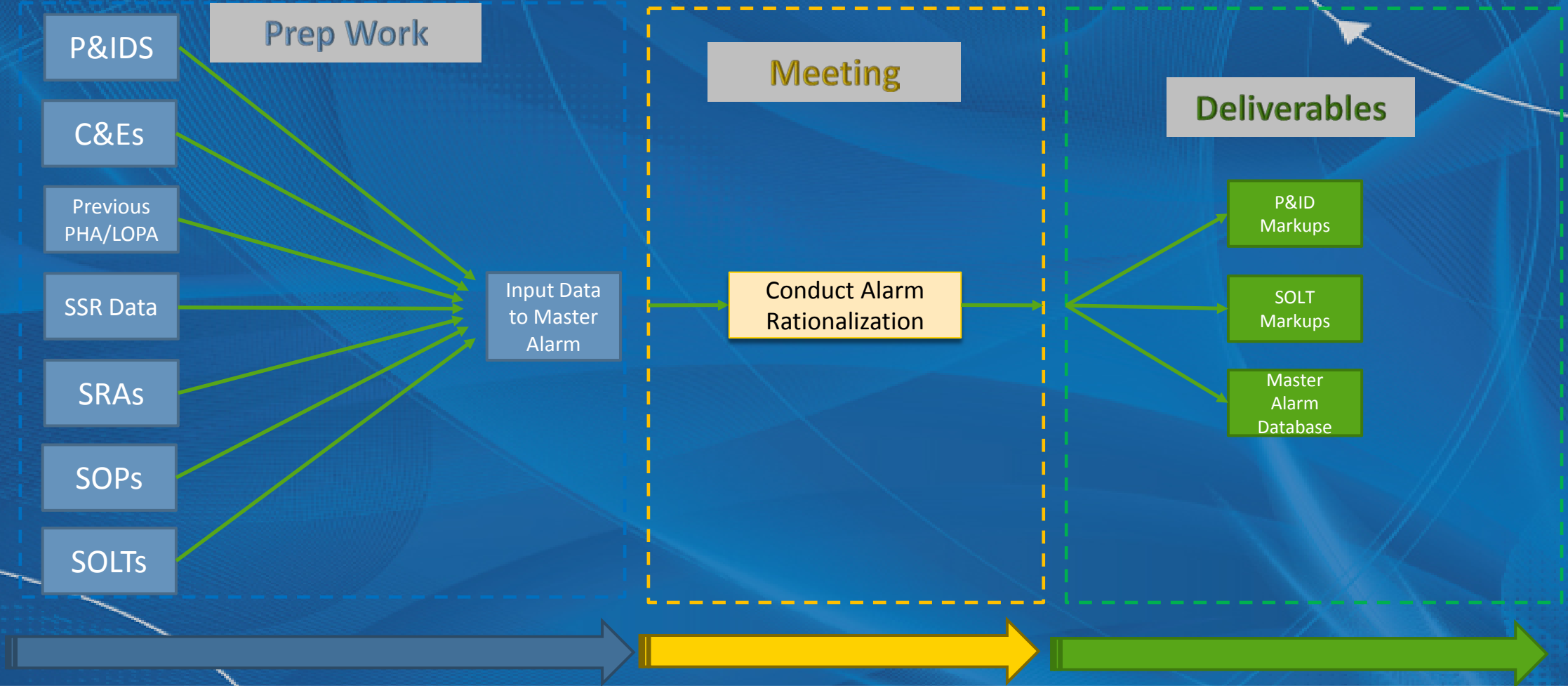
Definition of an Alarm

- An alarm is an audible and/or visual warning message to the operator to which he must respond. It is generated by a process variable crossing a defined threshold into an abnormal, undesirable, or hazardous region.
- An alarm is an *intentional interruption* to the operator.
- An alarm is a demand for help from the process.

Alarm Management Lifecycle – ISA 18.2



Alarm Rationalization Flowchart



Alarm Rationalization Project Execution

- Determine No. of Tags to Rationalize
- Prep work –
 - Review PHA/LOPA Results
 - Review SOL's/COD's
 - Collect Tag Info and Populate D&R Tool
- Training Session Options
 - Alarm Philosophy Development
 - ISA Standard Familiarization
 - D&R Training
- Rules of Engagement Session

Alarm Rationalization Flowchart

Conduct Alarm Rationalization

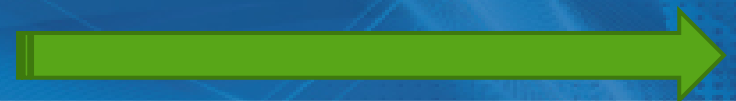
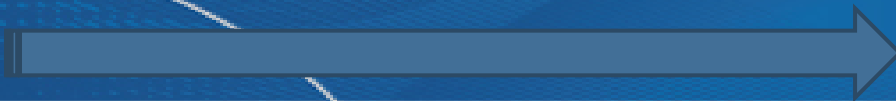
1-2 Days: Training

1-2 Days: Rules Of Engagement

10- Days: D&R Session 1 (Documentation and Rationalization)

10- Days: D&R Session 2

10- Days: D&R Session 3



Rationalization Process

1
Form Rationalization
Team

Rationalization Team

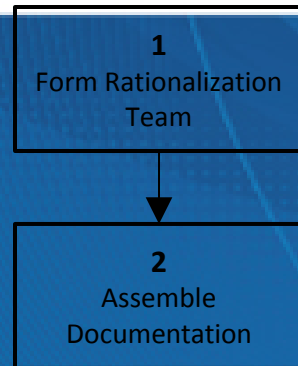
Core

- Facilitator
- Experienced Operators
- Operations Supervisor
- Process Engineer

Supplemental

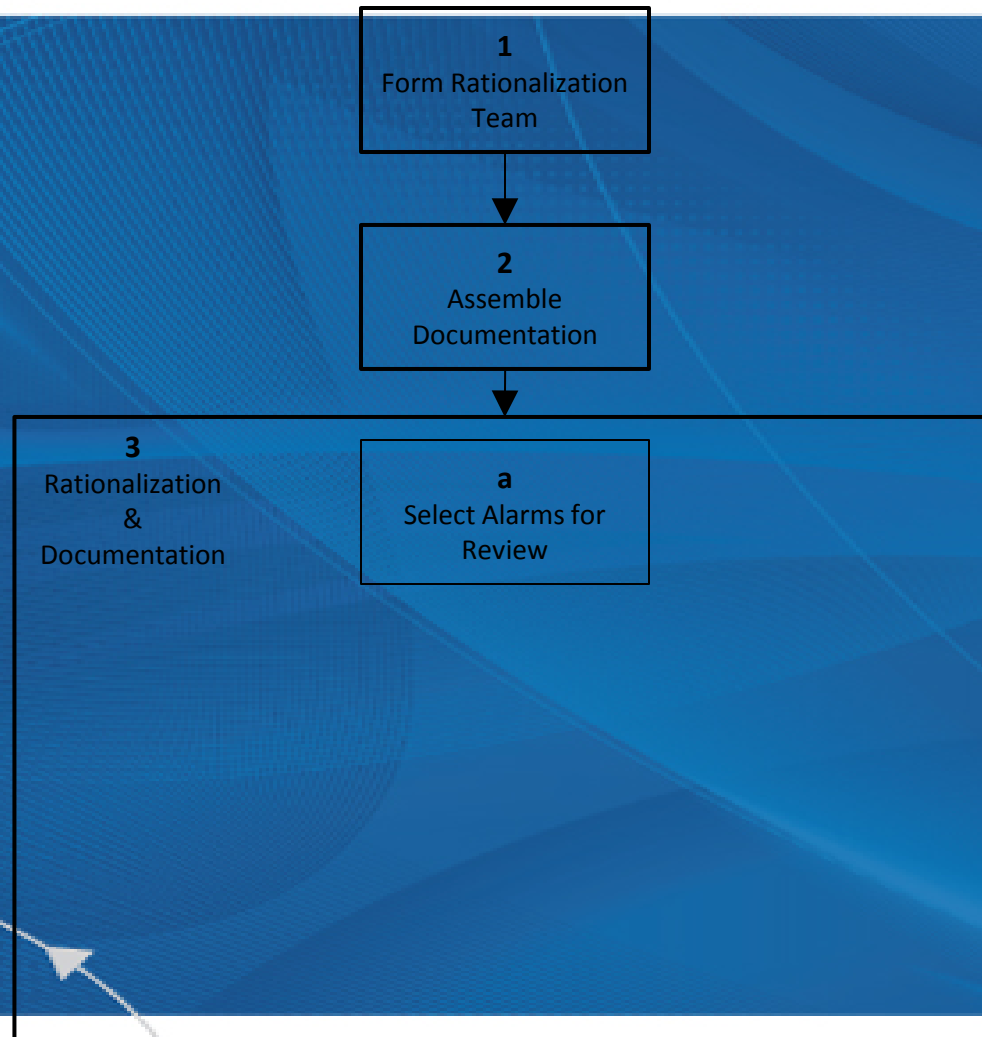
- I&C Engineer / Technician
- Health, Safety (Risk Management), & Environmental
- Risk Management
- Maintenance Supervisor / Technician
- Training Specialist
- Equipment Specialists
- Consultants as needed

Rationalization Process



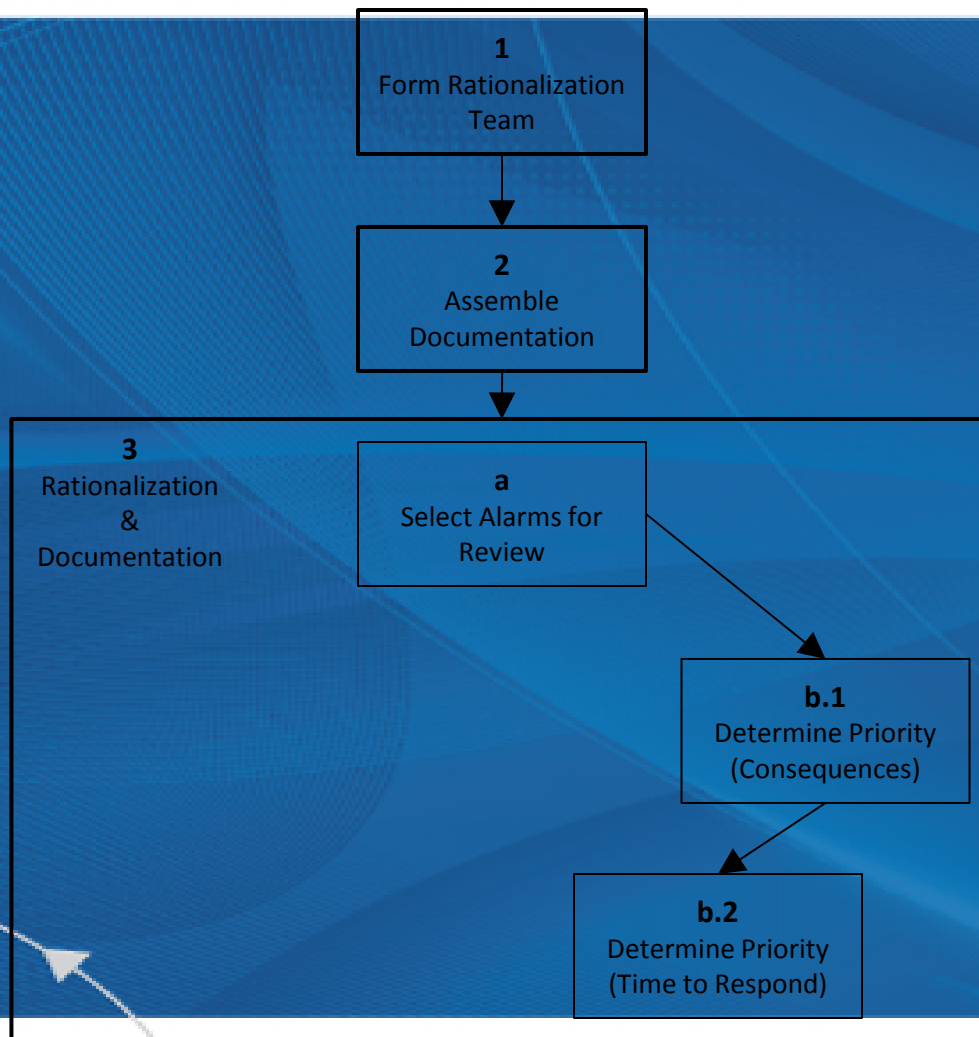
- Documentation & Resources
 - **Alarm Philosophy**
 - P&ID's
 - Logic Diagrams
 - Operating Procedures
 - HAZOP's / Process Safety Analysis (PHA)
 - Failure Mode and Effects Analysis (FMEA)
 - Safety Integrity Level (SIL) Assessments
 - Layer of Protection Analysis (LOPA)
 - Incident Investigations
 - Environmental Permits
 - Current Good Manufacturing Practice (cGMP)
 - ISO Quality Process
 - Packaged Equipment Manufacturer Requirements / Recommendations

Rationalization Process



- Select Alarm(s)
 - MAdB Review
 - Common Elements
 - Method of Flows
 - Method of Elements
 - “Clean Slate”
 - Combination

Rationalization Process



Priority – Relative Importance

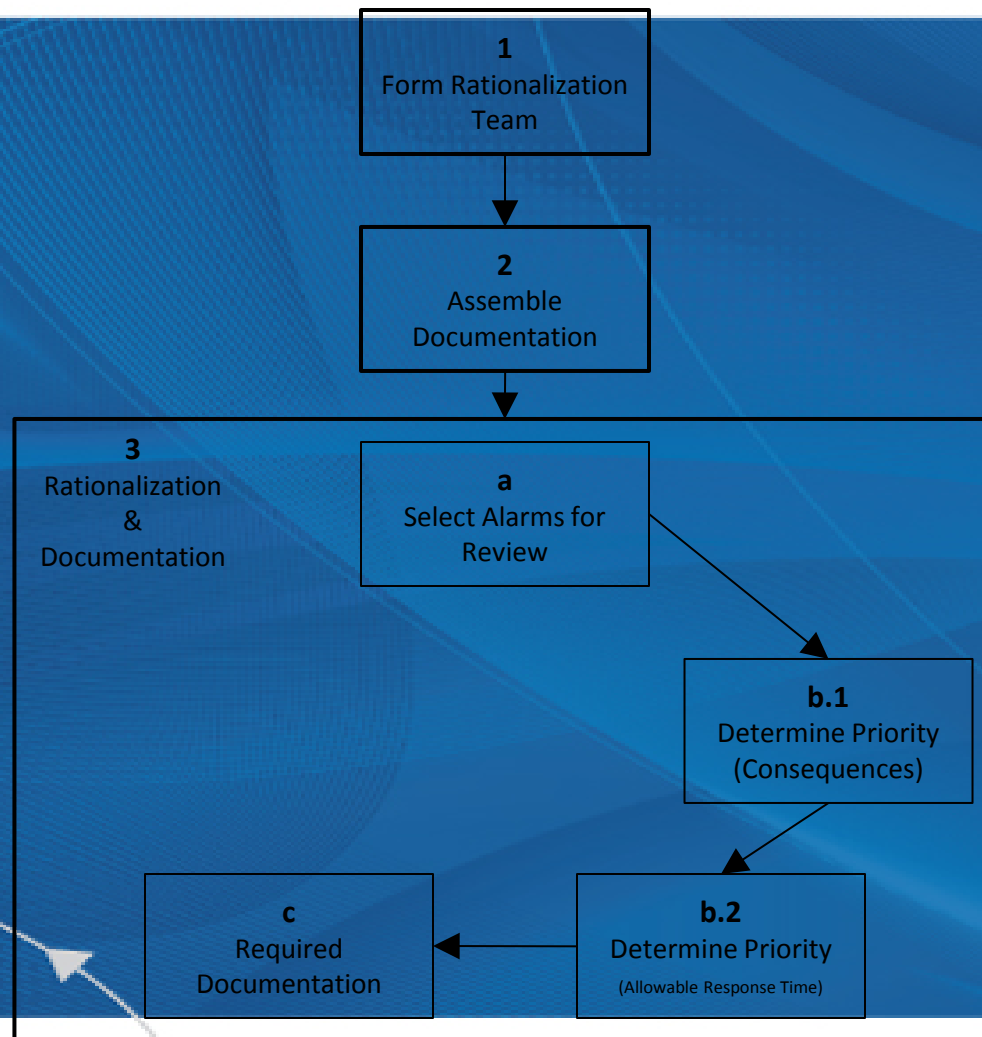
- Consequence
 - Impact
 - Severity
- Maximum Time to Respond
 - Set point must be determined in order to give the operator sufficient time to respond.

Consequence	Minor	Moderate	Major	Extreme
Urgency				
Now (< 5 min)	Medium	Medium	High	Critical
Next (5-15 min)	Low	Medium	High	Critical
Later (>15 min)	Low	Low	Medium	Critical

Example: Consequence vs. Priority

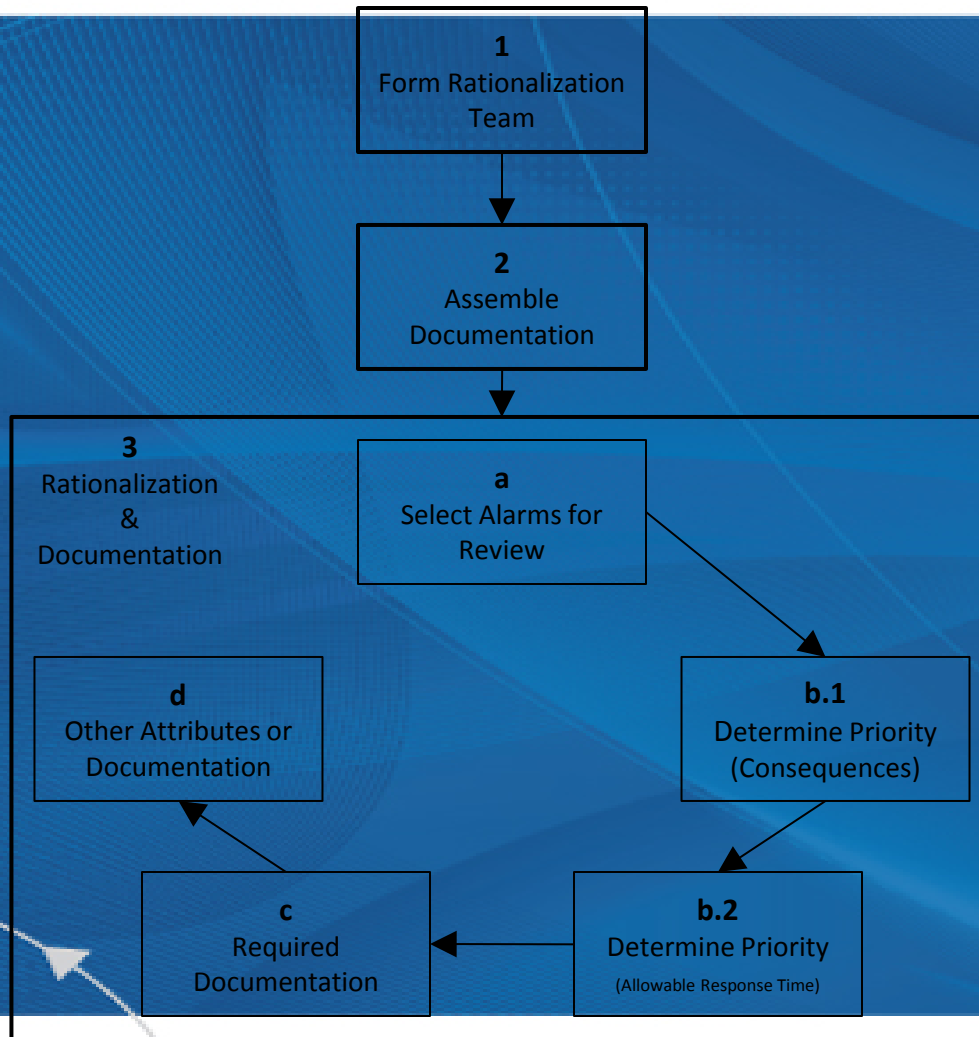
<i>Safety</i>	-	-	Safety Shower	Potential MTI or worse
<i>Environmental</i>	-	Minor release inside boundary	Significant release inside boundary	Notifiable release
<i>Production loss</i> <i>(examples)</i>	Lower efficiency, Increased fouling	Non-spared equipment has tripped	Non-spared equipment will trip	Downtime more than 1 week
<i>Equipment damage</i> <i>(examples)</i>	Pump damage (spare on	Pump damage (no spare)	Damage to major equipment	Critical equipment destroyed
<i>Inefficient operation</i>	< \$50k	\$50 to 100k	> \$100k	-
Consequence	Minor	Moderate	Major	Extreme
Urgency	Medium	Medium	High	Critical
Now (< 5 min)	Low	Medium	High	Critical
Next (5-15 min)	Low	Medium	High	Critical
Later (>15 min)	Low	Low	Medium	Critical

Rationalization Process



- Alarm Response
 - Cause
 - Corrective Action
 - Confirmation / Verification

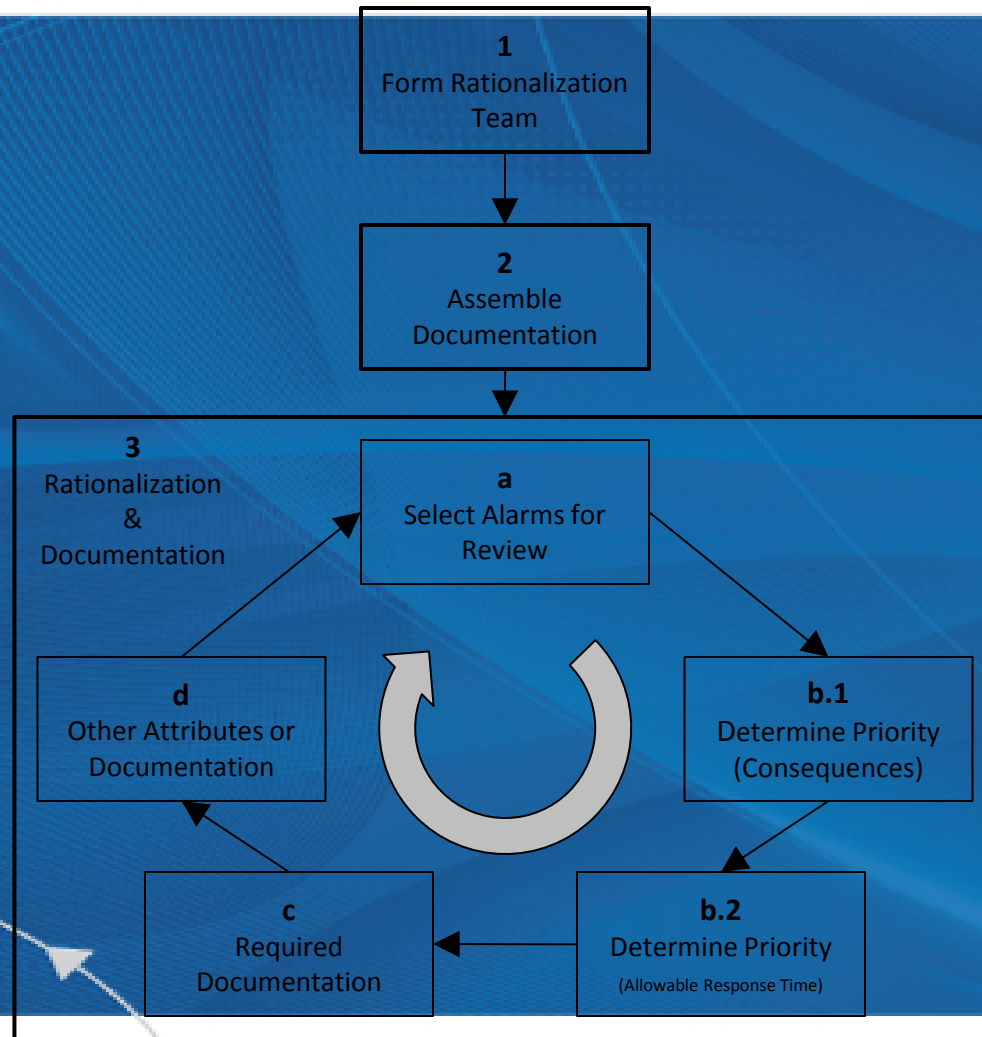
Rationalization Process



- Other Alarm Attributes

- Class
- Description
- Alarm Message
- Destination / Routing
- Linkage to other documents

Rationalization Process



Alarm Rationalization Steps

- Intersection of Safety & Alarm Management
 - Develop Consequence and risk ranking for Health/Safety, Environmental and Commercial impacts
 - From Alarm Philosophy Document
 - Primary Cause
 - Operator Corrective Action
- ORT (Operator Response Time)
- TTE (Time To Event)
 - [ORT Explained.pptx](#)
- Alarm setpoint
- Priority
- Advanced Alarming
 - Masking
 - Grouping
 - Overriding and Reason

Alarm Rationalization Steps

- ORT (Operator Response Time)
- TTE (Time To Event)
 - [ORT Explained.pptx](#)
- Alarm setpoint
- Priority
- Advanced Alarming
 - Masking
 - Grouping
 - Overriding and reason

Typical Alarm Management Services

- Training
 - Principles of Alarm Management
 - Rationalization Process
- Alarm Philosophy development
- Alarm Philosophy Gap analysis
- Alarm Rationalization Facilitation
- Updating and harmonization of PSI documentation

Questions?

