



IADC

**IADC
ISP PROGRAM**

2014



**Summary of Occupational
Incidents
(US Land Totals)**

Issued 15 June 2015

Table of Contents

(Table of Contents is Hyperlinked, Just click on Topic & go)

IADC 2014 US LAND TOTALS (TABLE 1).....	1
<i>US Land Total Incidence Rates vs Man-hours (Figure 1)</i>	1
IADC 2014 US LAND CHARTS	2
<i>US Land Total Lost Time Incidents by Month (Chart 1)</i>	2
<i>US Land Total Recordable Incidents by Month (Chart 2)</i>	3
<i>US Land Total Lost Time Incidents by Occupation (Chart 3)</i>	4
<i>US Land Total Recordable Incidents by Occupation (Chart 4)</i>	5
<i>US Land Total Lost Time Incidents by Body Part (Chart 5)</i>	6
<i>US Land Total Recordable Incidents by Body Part (Chart 6)</i>	7
<i>US Land Total Lost Time Incidents by Incident Type (Chart 7)</i>	8
<i>US Land Total Recordable Incidents by Incident Type (Chart 8)</i>	9
<i>US Land Total Lost Time Incidents by Equipment (Chart 9)</i>	10
<i>US Land Total Recordable Incidents by Equipment (Chart 10)</i>	11
<i>US Land Total Lost Time Incidents by Operation (Chart 11)</i>	12
<i>US Land Total Recordable Incidents by Operation (Chart 12)</i>	13
<i>US Land Total Lost Time Incidents by Location (Chart 13)</i>	14
<i>US Land Total Recordable Incidents by Location (Chart 14)</i>	15
<i>US Land Total Lost Time Incidents by Time in Service (Chart 15)</i>	16
<i>US Land Total Recordable Incidents by Time in Service (Chart 16)</i>	17
<i>US Land Total Lost Time Incidents by Time of Day (Chart 17)</i>	18
<i>US Land Total Recordable Incidents by Time of Day (Chart 18)</i>	19
<i>US Land Total Lost Time Incidents by Age (Chart 19)</i>	20
<i>US Land Total Recordable Incidents by Age (Chart 20)</i>	21
IADC 2014 US LAND PARTICIPANT DETAIL BY CATEGORY (TABLE 2).....	22

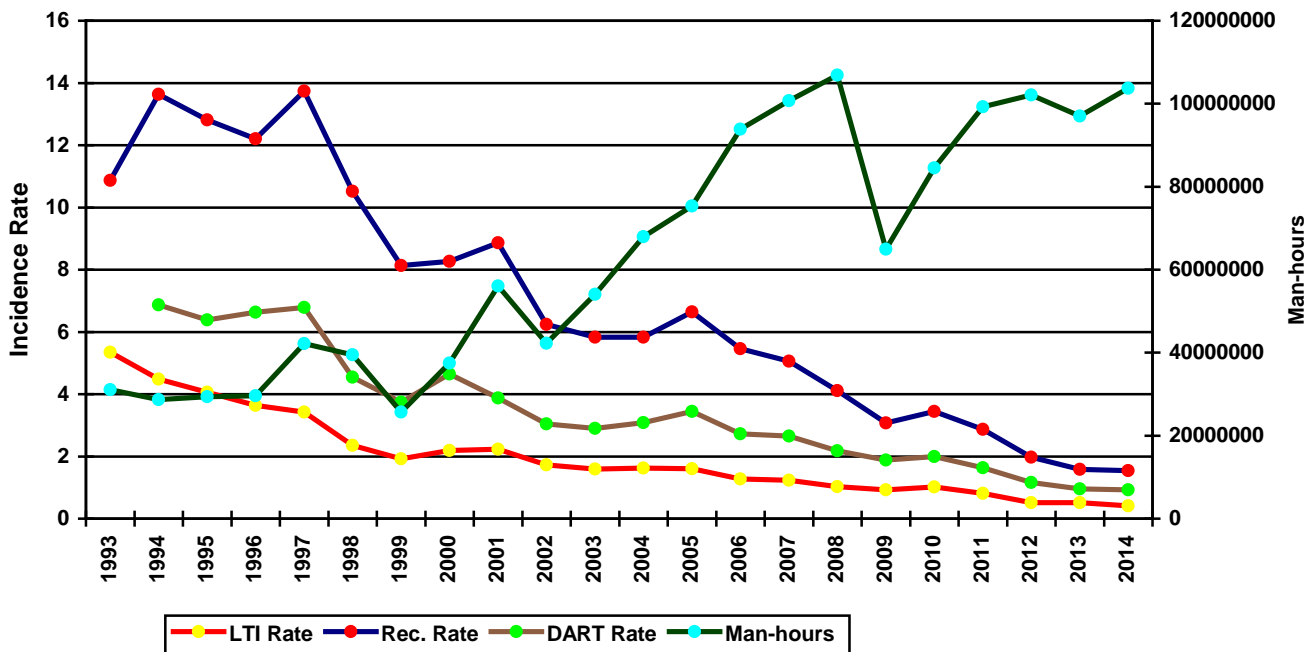
IADC 2014 US Land Totals (Table 1)

	<u>Total</u>
Total Man-hours	103,733,079
Total Medical Treatment Incidents	317
Total Restricted Work Incidents	269
Total Lost Time Incidents	205
Total Fatalities	10
Total Recordables	801
MTO Incidence Rate	0.61
RWC Incidence Rate	0.52
LTI Incidence Rate	0.41
LTI Frequency Rate	2.07
DART Incidence Rate	0.93
DART Frequency Rate	4.67
Recordable Incidence Rate	1.54
Recordable Frequency Rate	7.72

Companies Reporting: Land – 34

<p>Medical Treatment Incidence Rate = MTOs X 200,000 Restricted Work Incidence Rate = RWCs X 200,000 Lost Time Incidence Rate = LTIs + FTLs X 200,000 DART Incidence Rate = LTIs + RWC X 200,000 Recordable Incidence Rate = RCRD X 200,000</p>	<p>Lost Time Frequency Rate = LTIs +FTLs X 1,000,000 DART Frequency Rate = LTIs + RWC X 1,000,000 Recordable Frequency Rate = RCRD X 1,000,000</p>
---	--

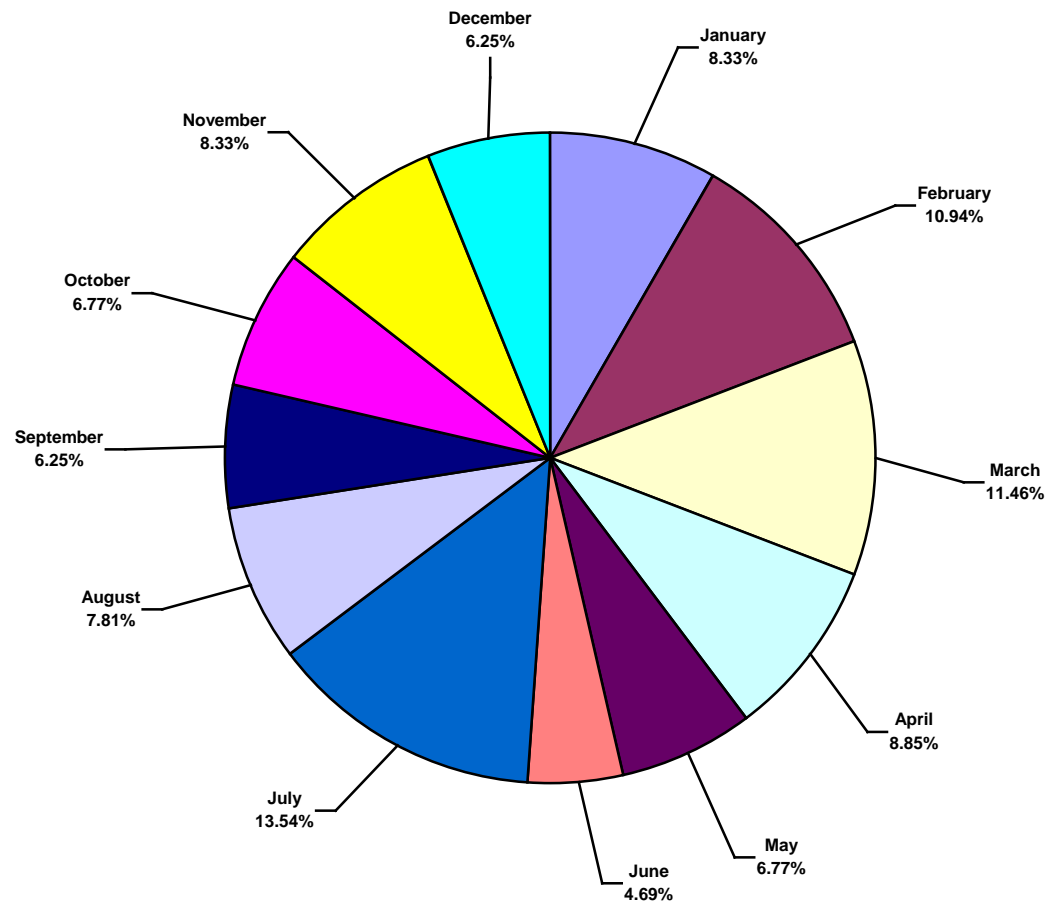
US Land Total Incidence Rates vs Man-hours (Figure 1)



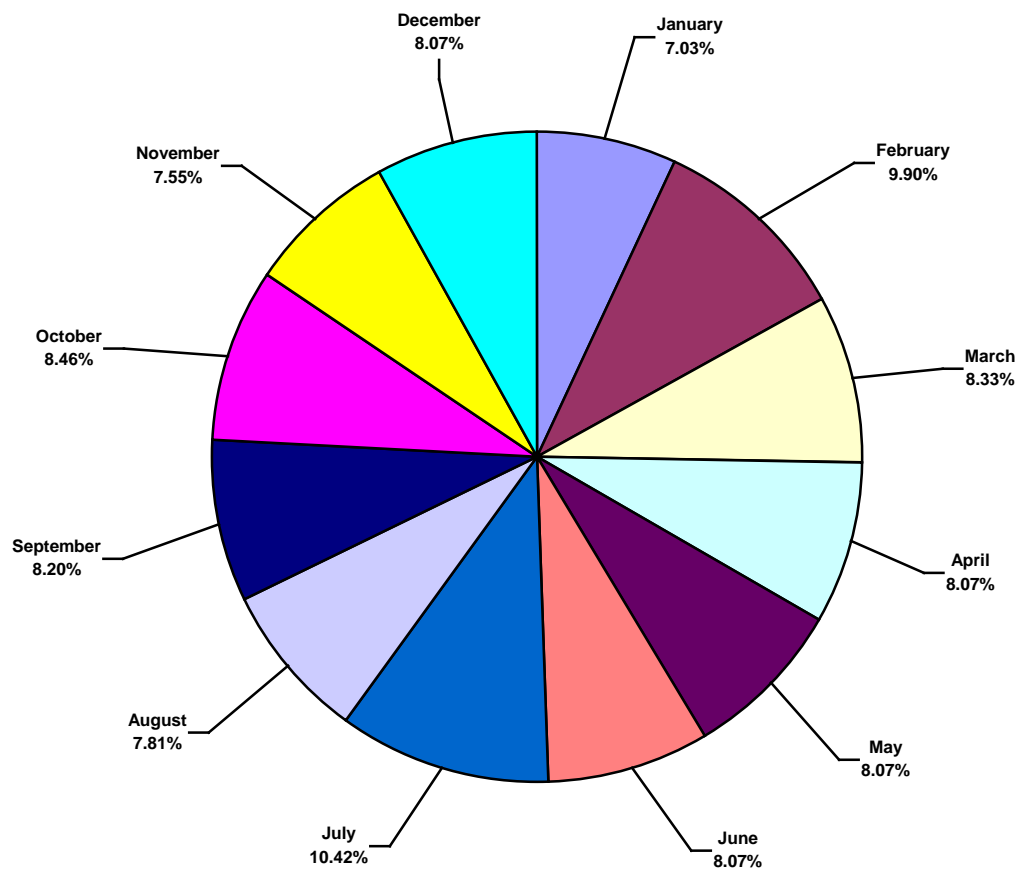
IADC 2014 US Land Charts

US Land Total Lost Time Incidents by Month (Chart 1)

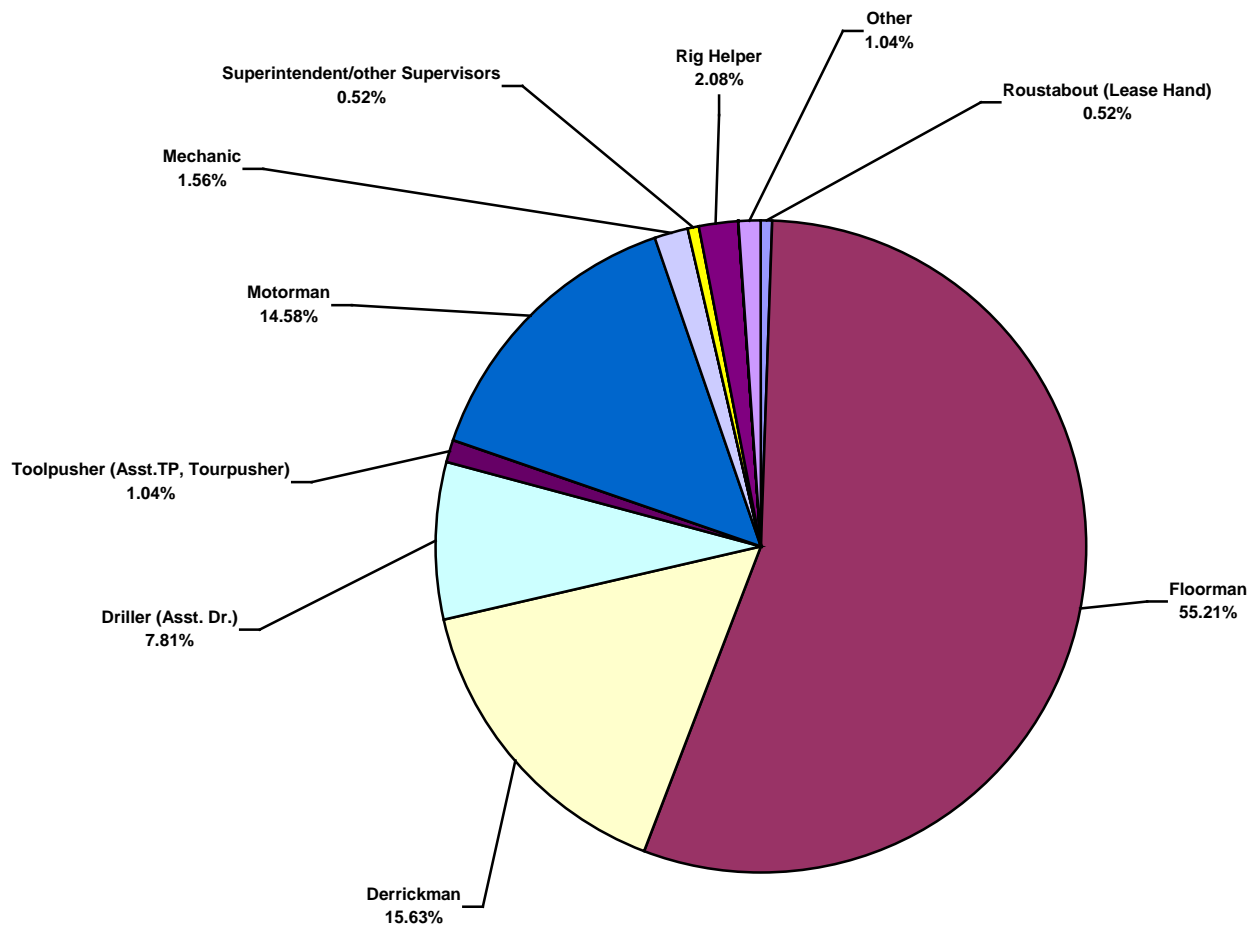
Based on 192 Incidents



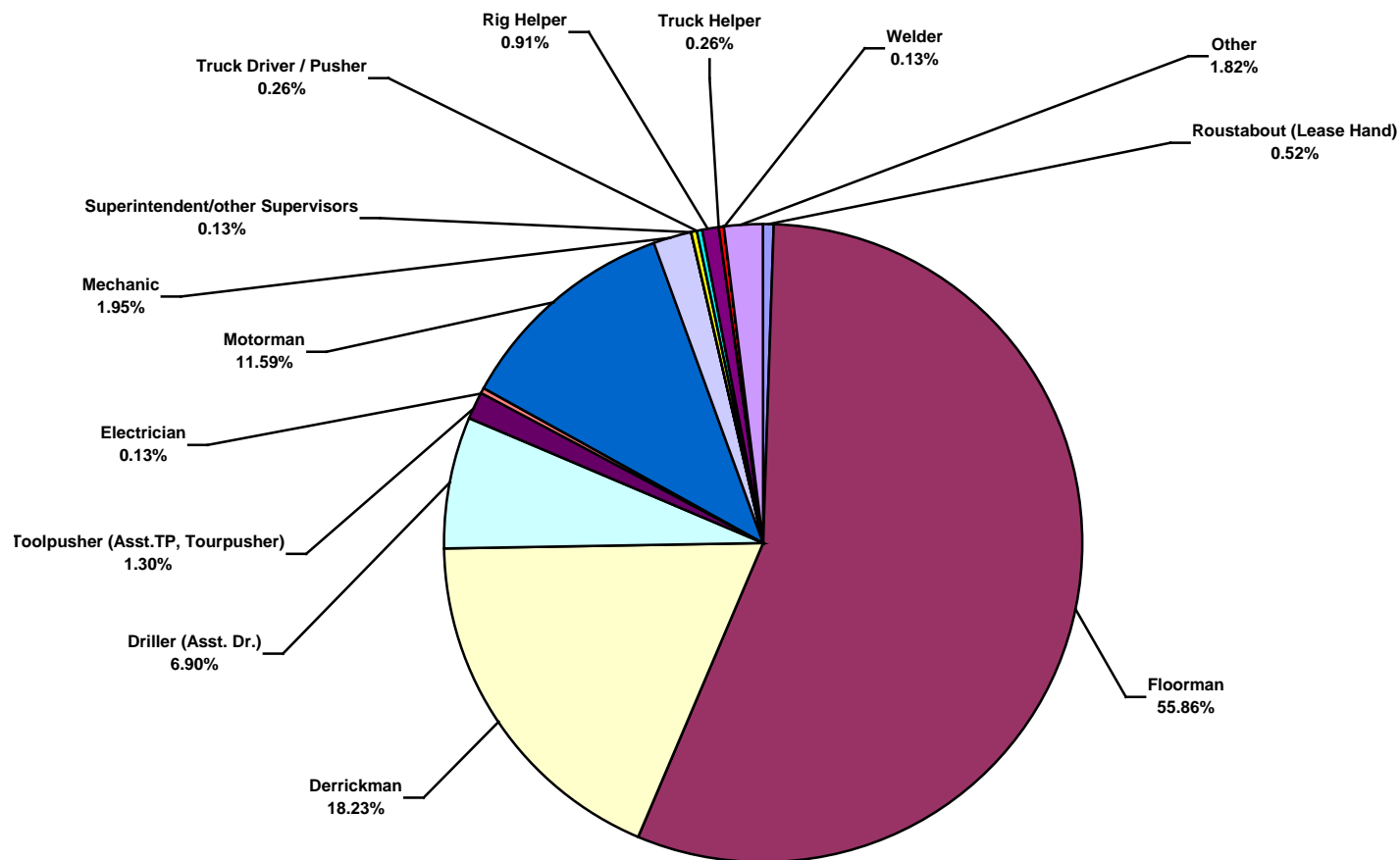
US Land Total Recordable Incidents by Month (Chart 2)
Based on 768 Incidents



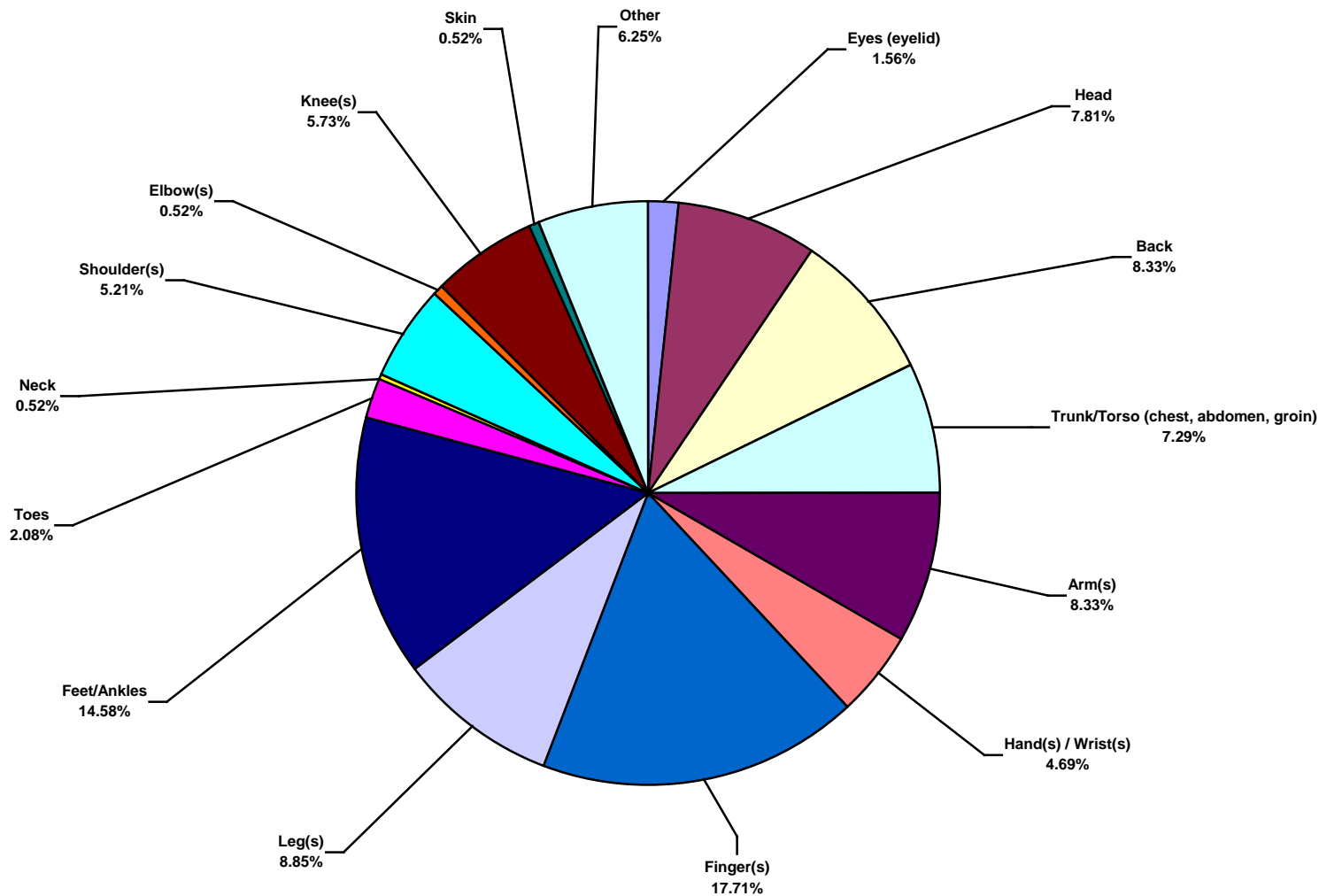
US Land Total Lost Time Incidents by Occupation (Chart 3)
Based on 192 Incidents



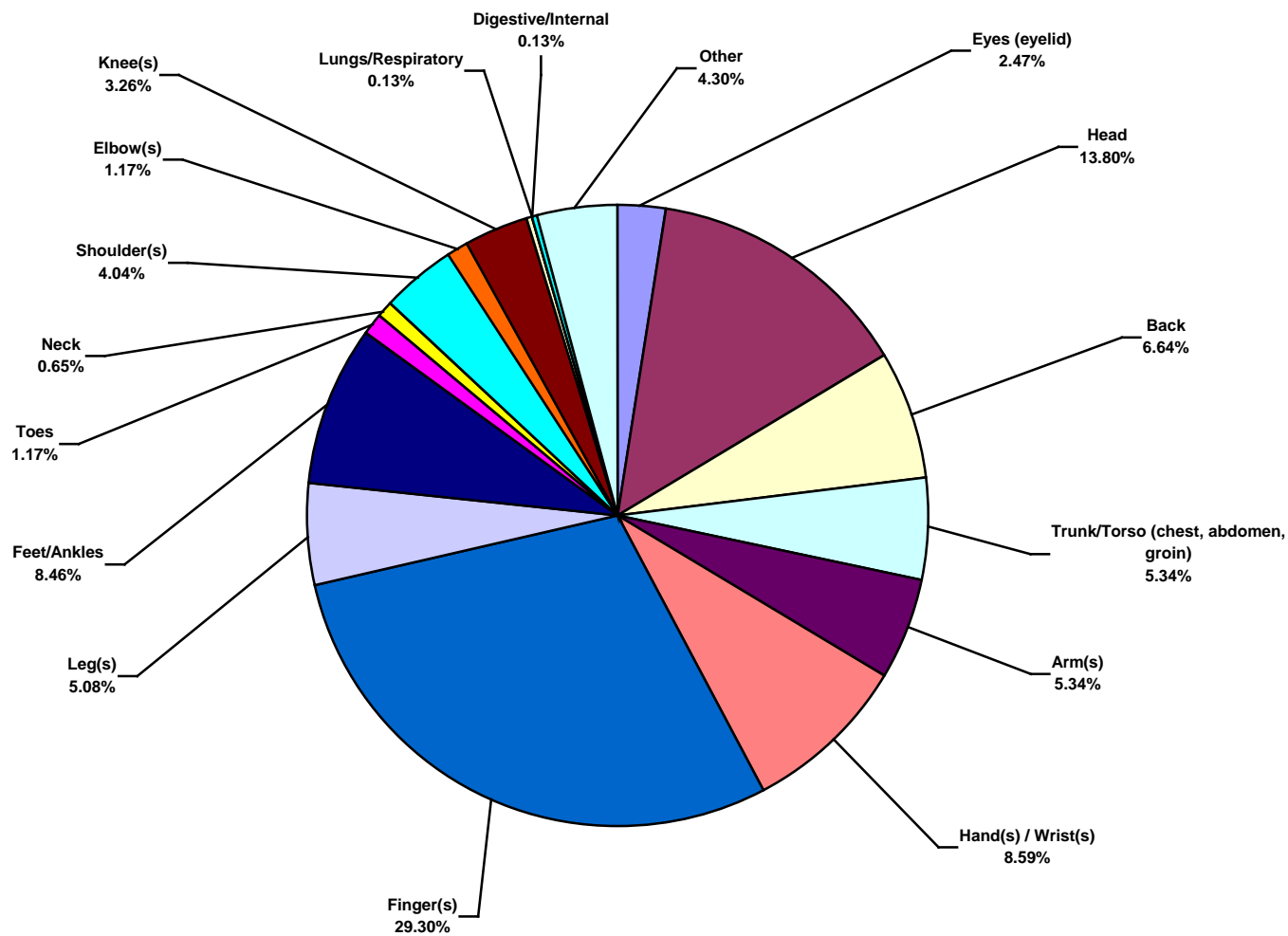
US Land Total Recordable Incidents by Occupation (Chart 4)
Based on 768 Incidents



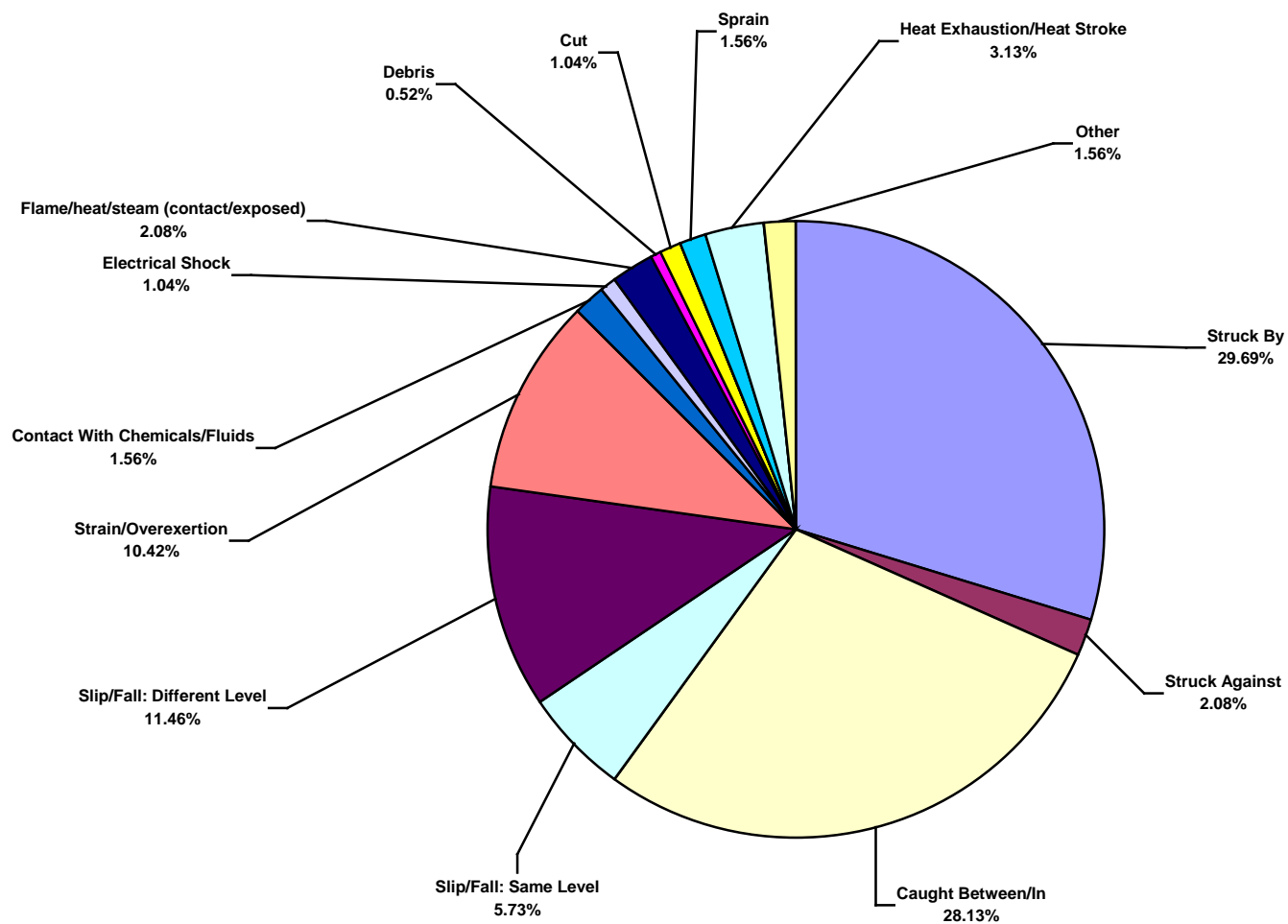
US Land Total Lost Time Incidents by Body Part (Chart 5)
Based on 192 Incidents



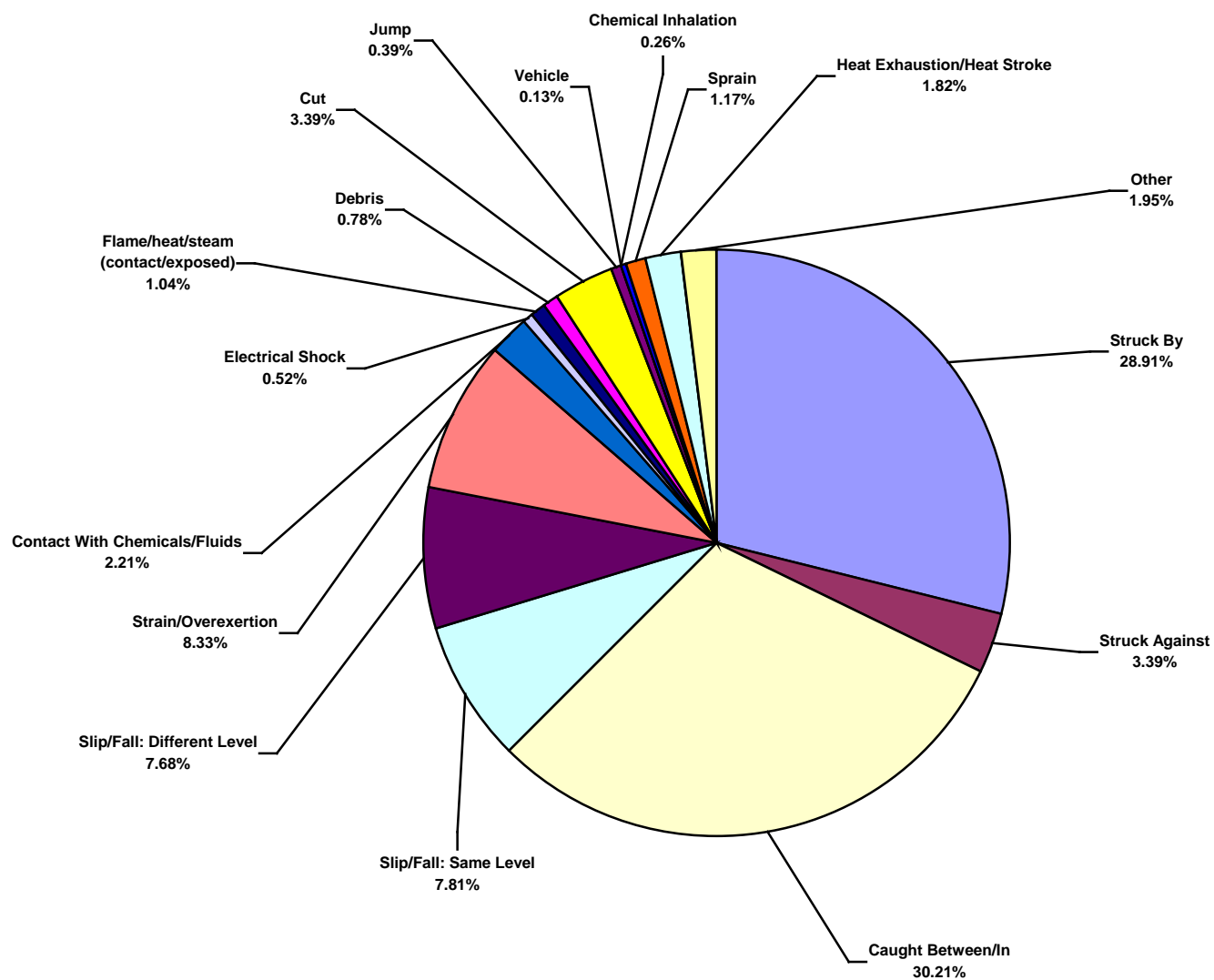
US Land Total Recordable Incidents by Body Part (Chart 6)
Based on 768 Incidents



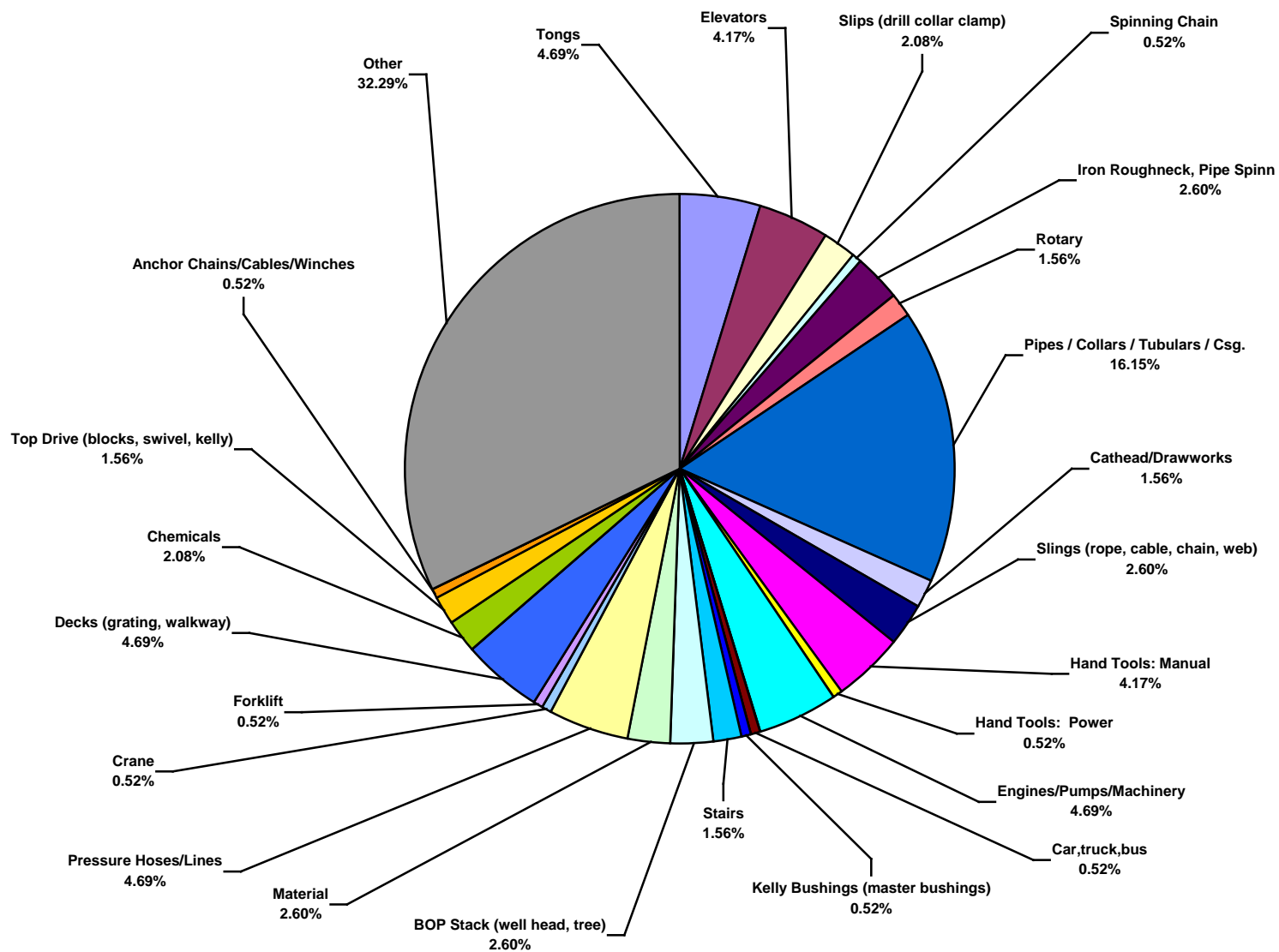
US Land Total Lost Time Incidents by Incident Type (Chart 7)
Based on 192 Incidents



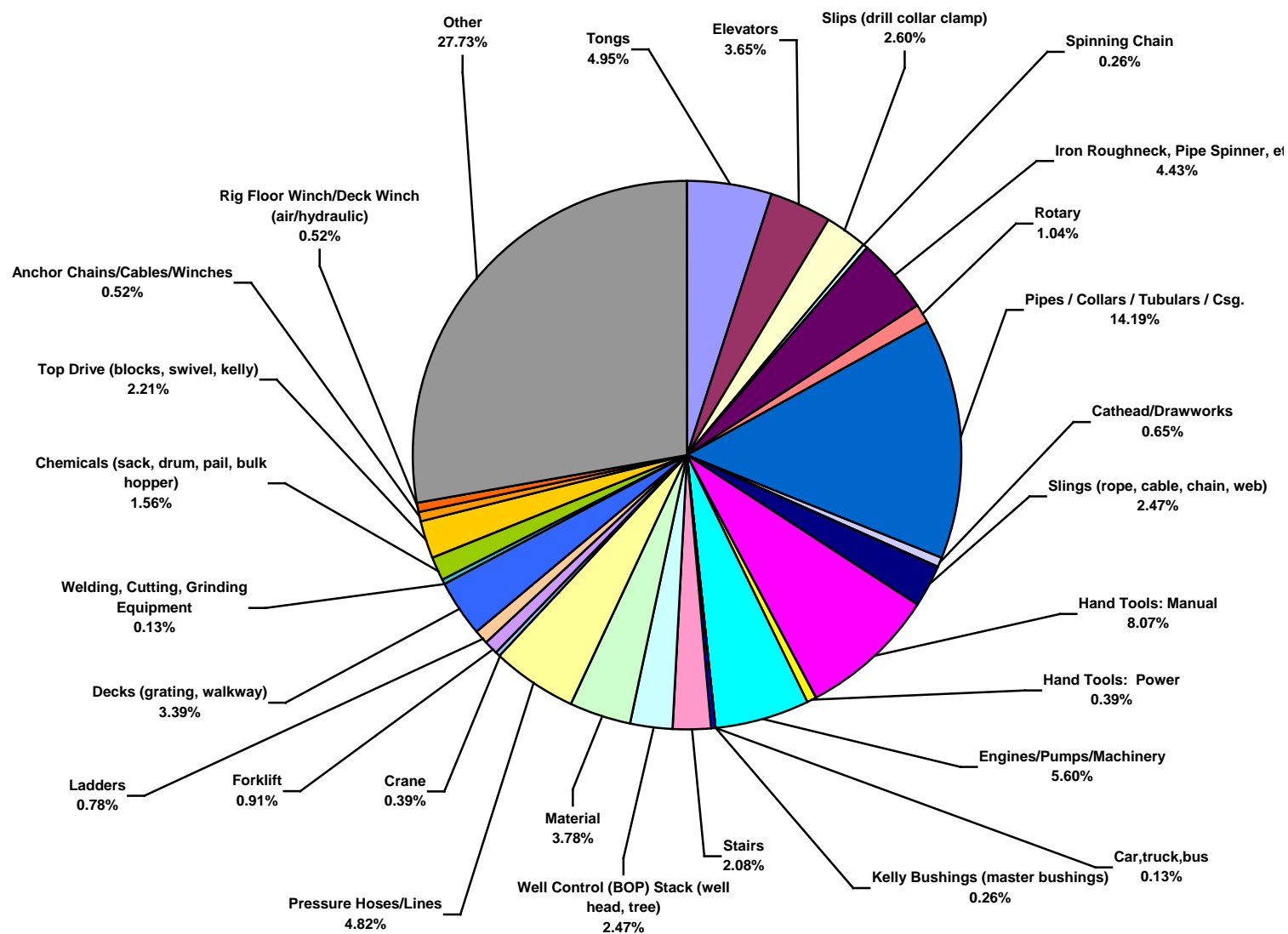
US Land Total Recordable Incidents by Incident Type (Chart 8)
Based on 768 Incidents



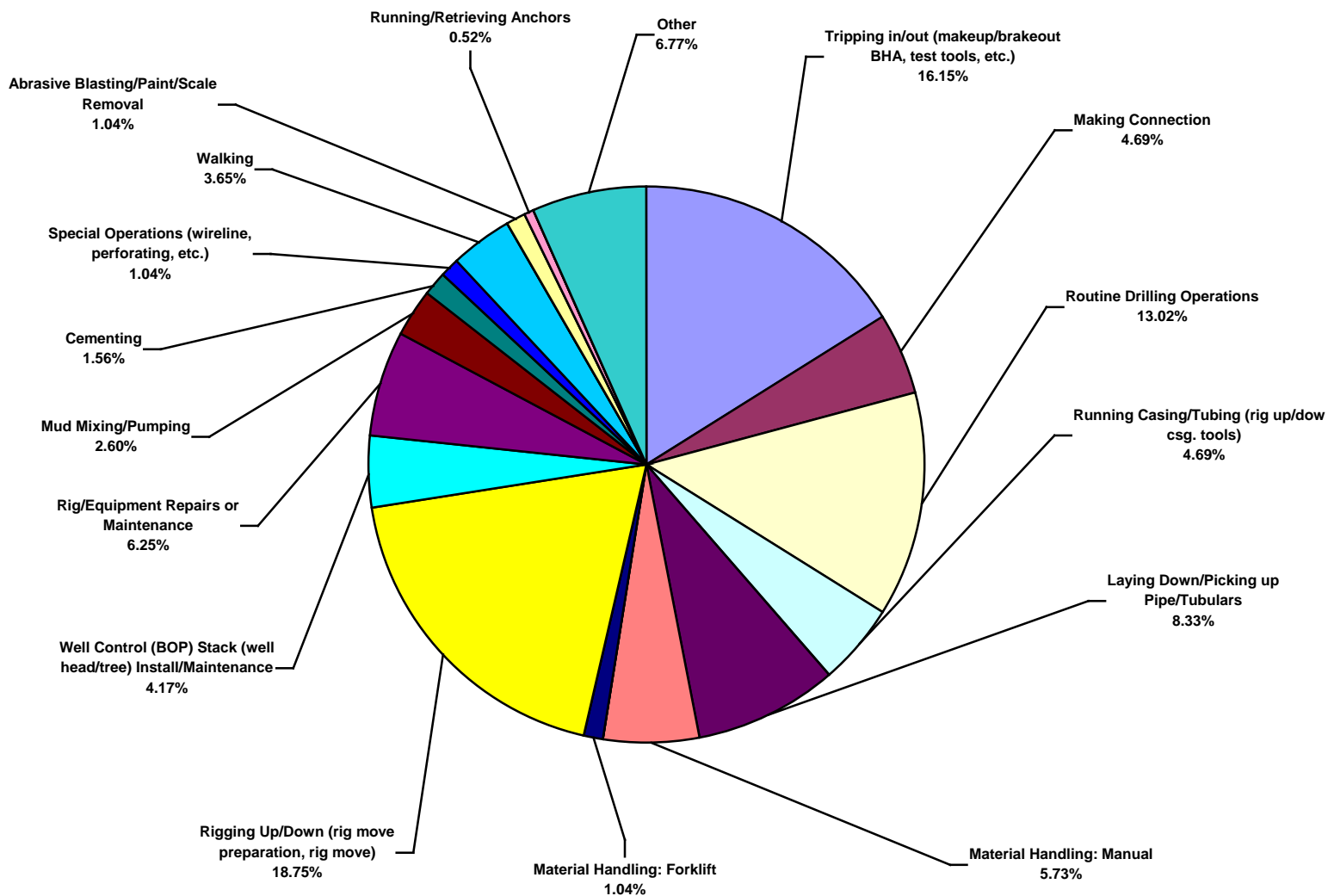
US Land Total Lost Time Incidents by Equipment (Chart 9)
Based on 192 Incidents



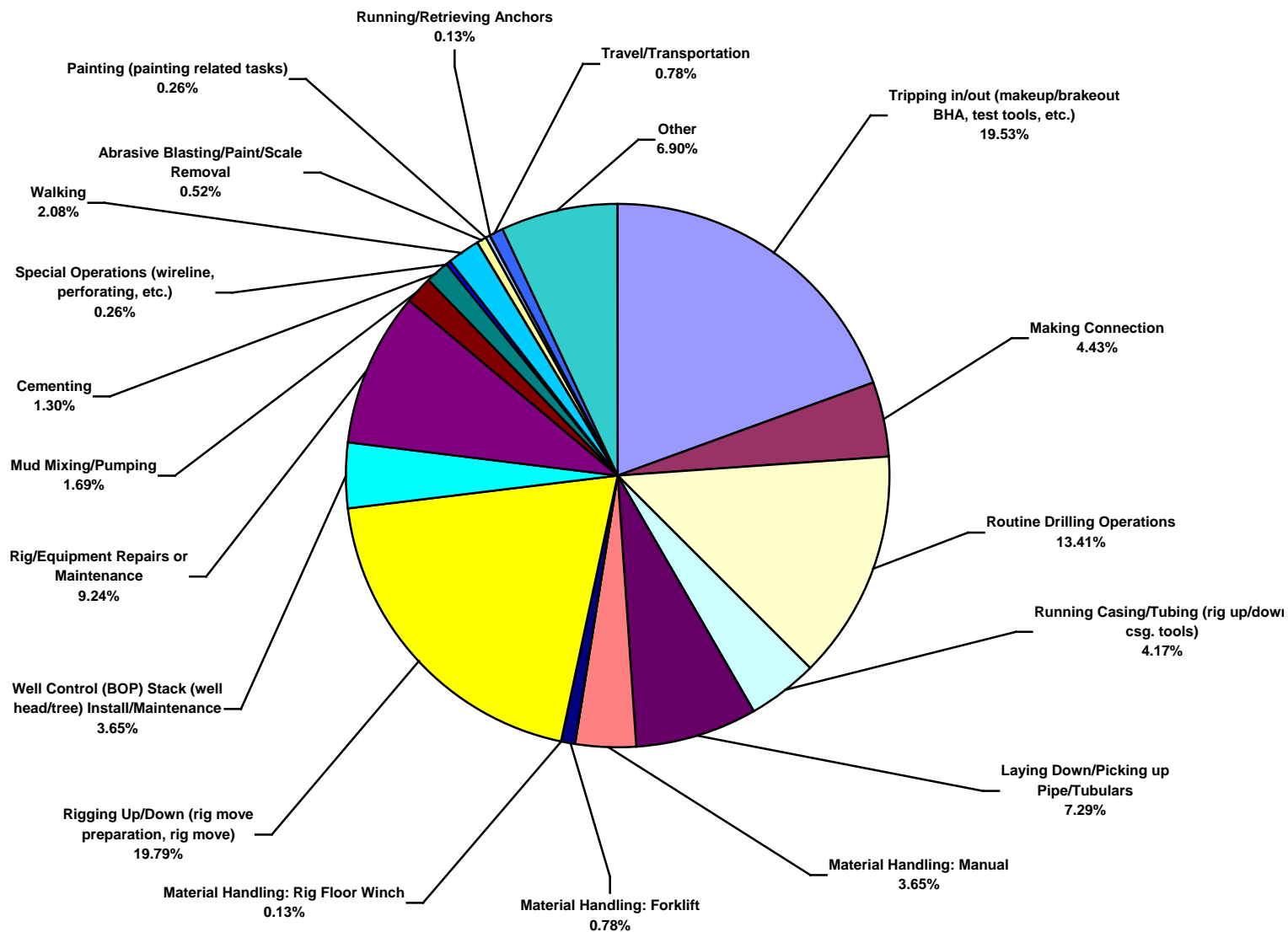
US Land Total Recordable Incidents by Equipment (Chart 10)
Based on 768 Incidents



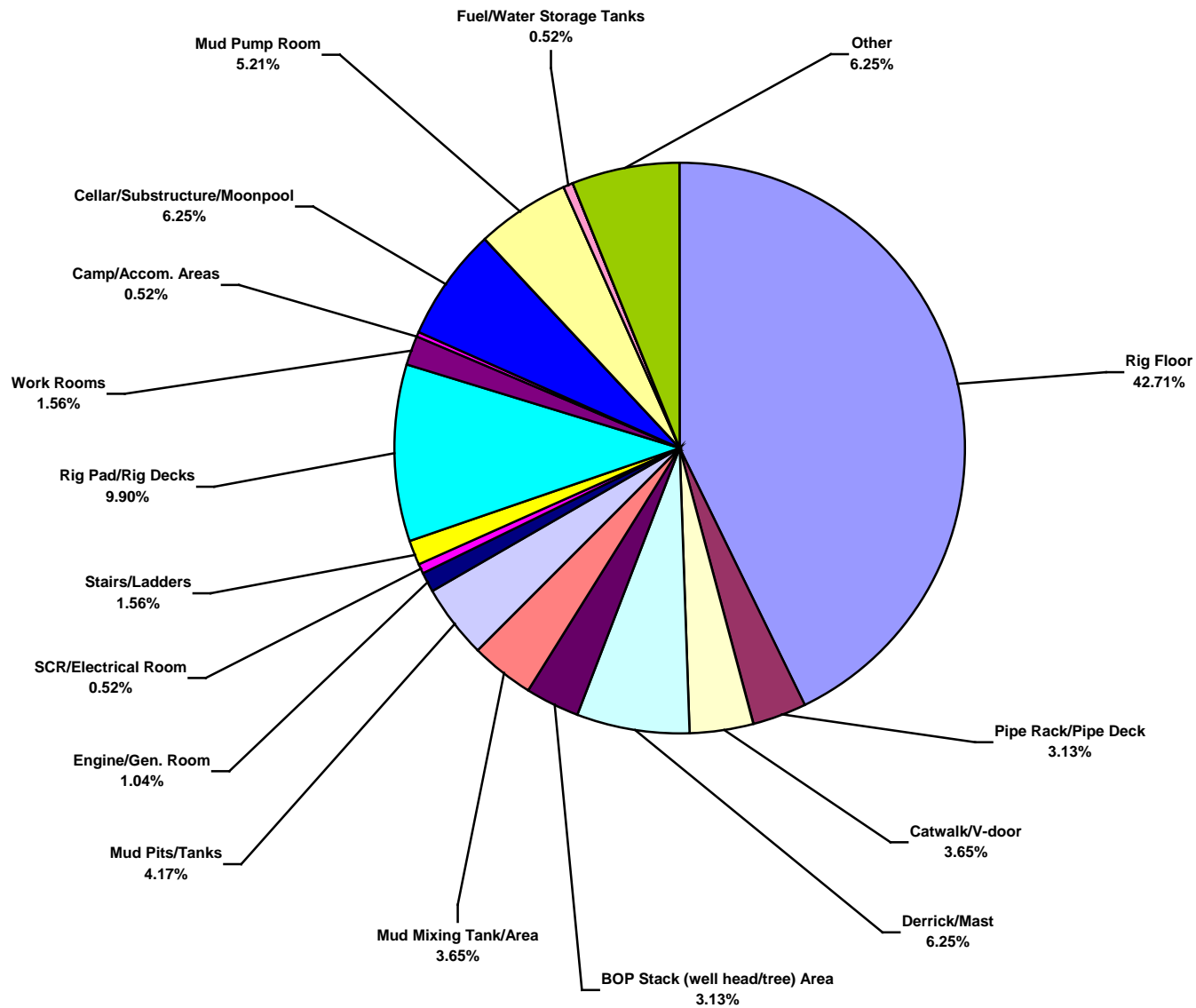
US Land Total Lost Time Incidents by Operation (Chart 11)
Based on 192 Incidents



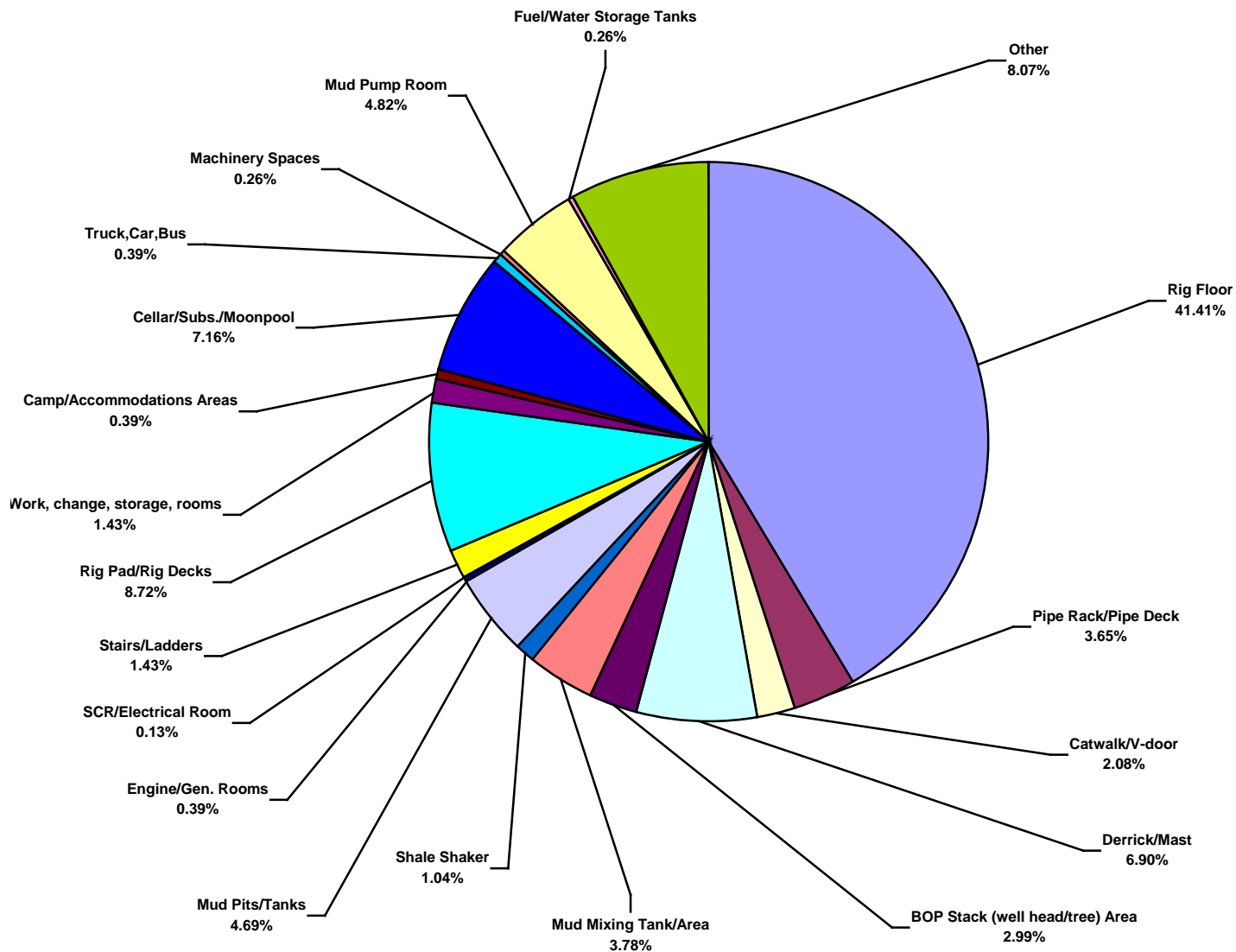
US Land Total Recordable Incidents by Operation (Chart 12)
Based on 768 Incidents



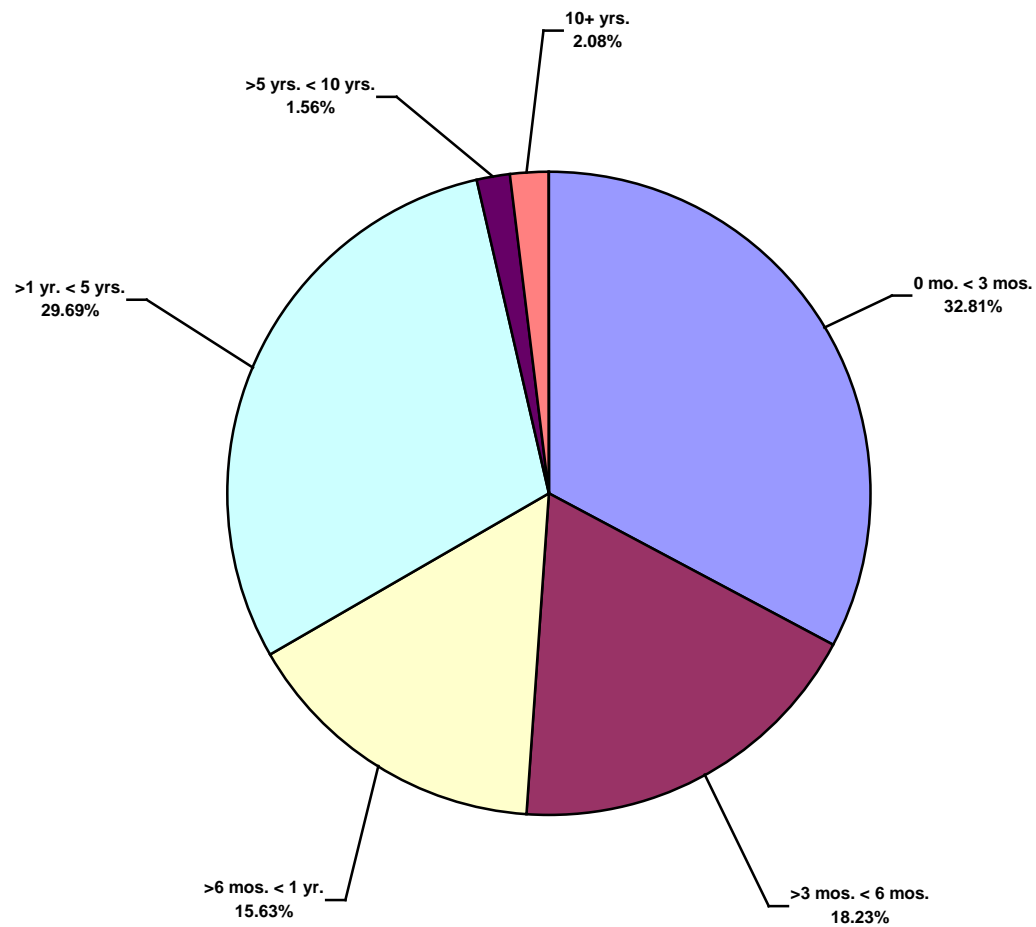
US Land Total Lost Time Incidents by Location (Chart 13)
Based on 192 Incidents



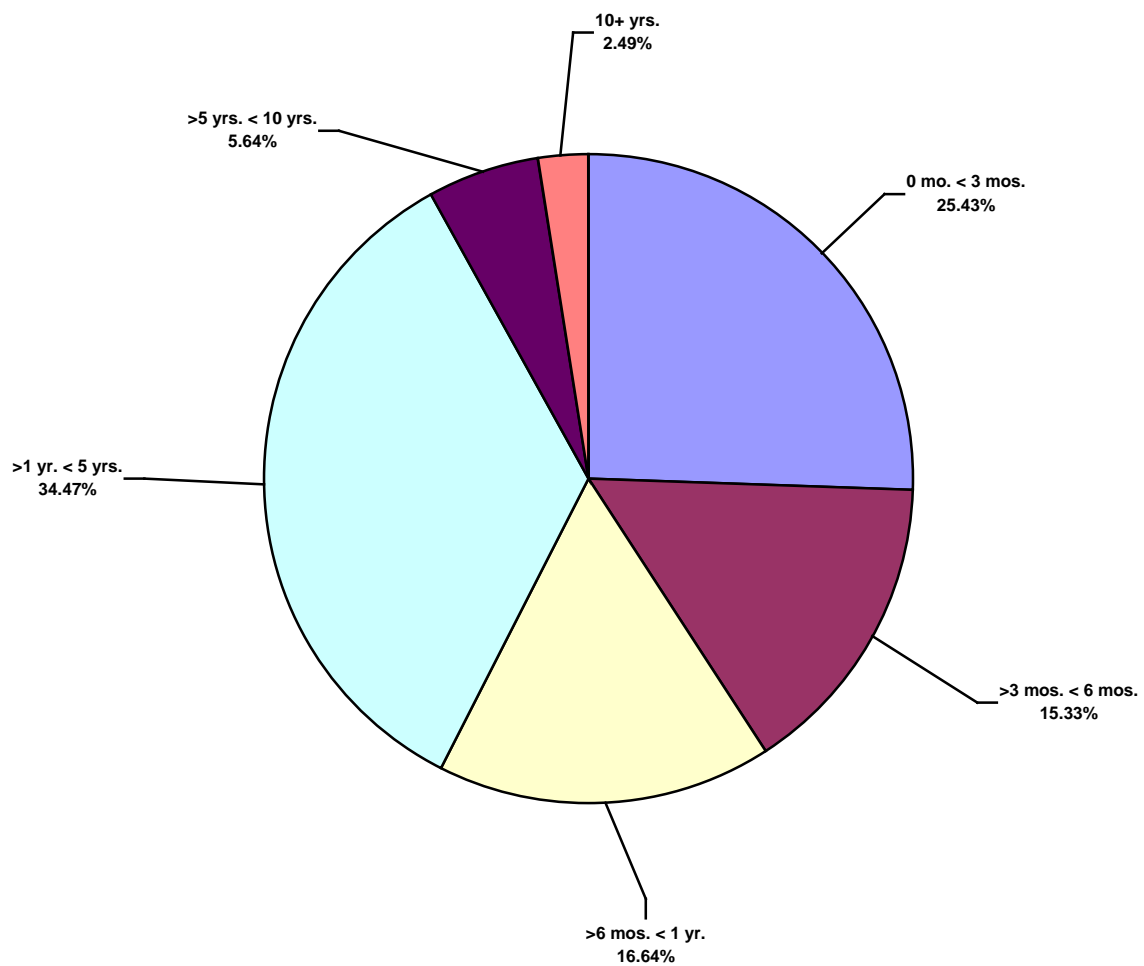
US Land Total Recordable Incidents by Location (Chart 14)
Based on 768 Incidents



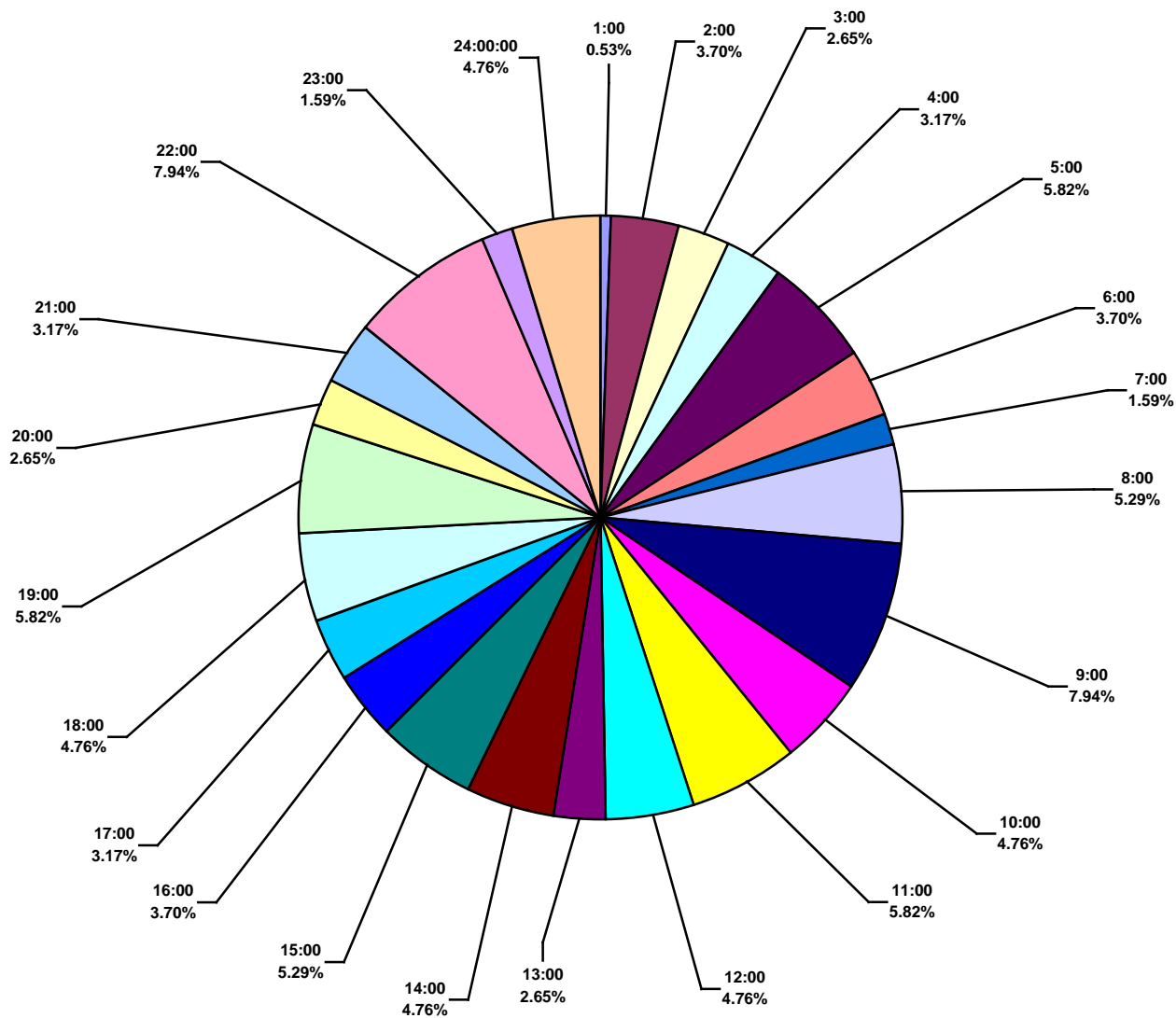
US Land Total Lost Time Incidents by Time in Service (Chart 15)
Based on 192 Incidents



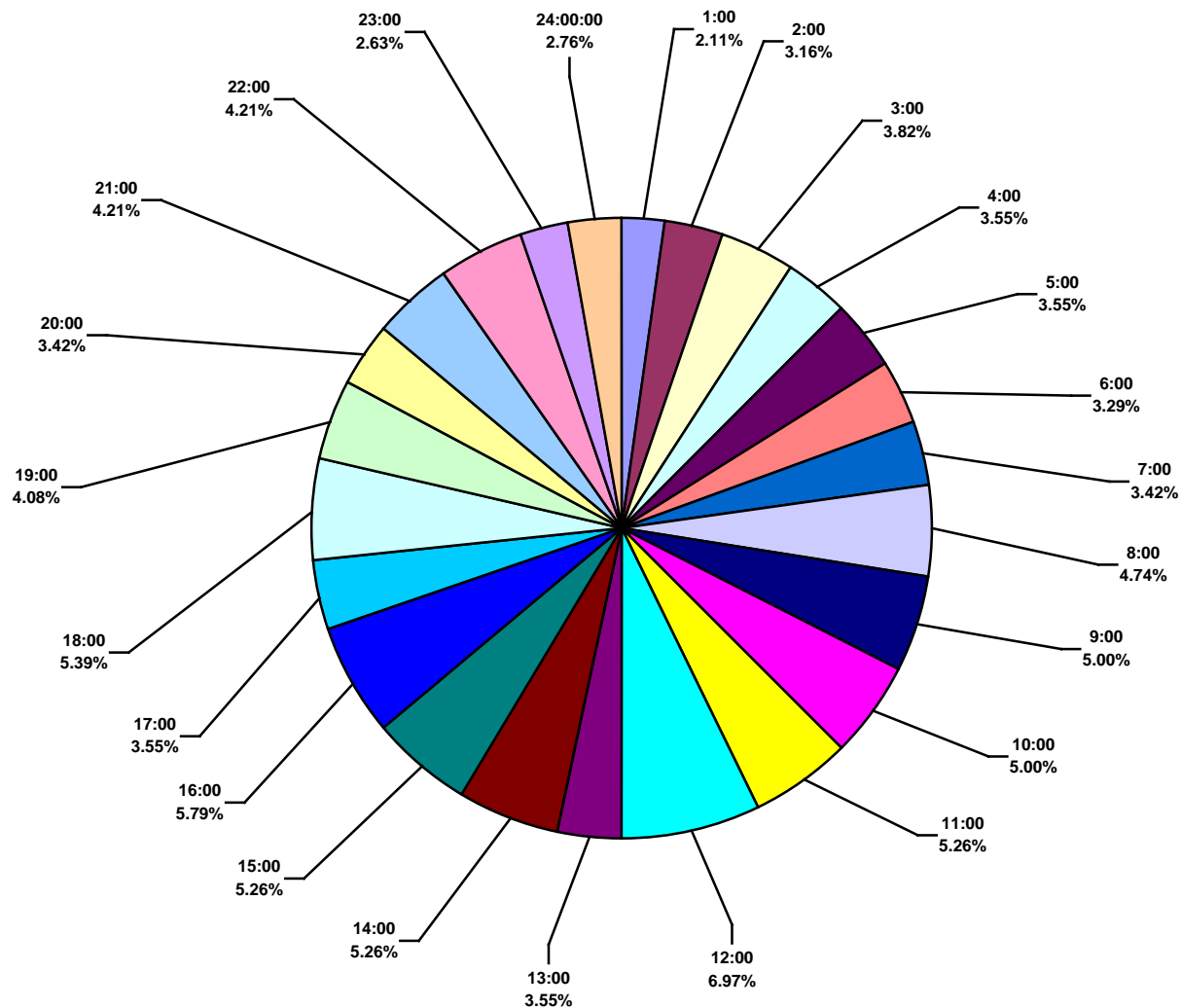
US Land Total Recordable Incidents by Time in Service (Chart 16)
Based on 763 Incidents



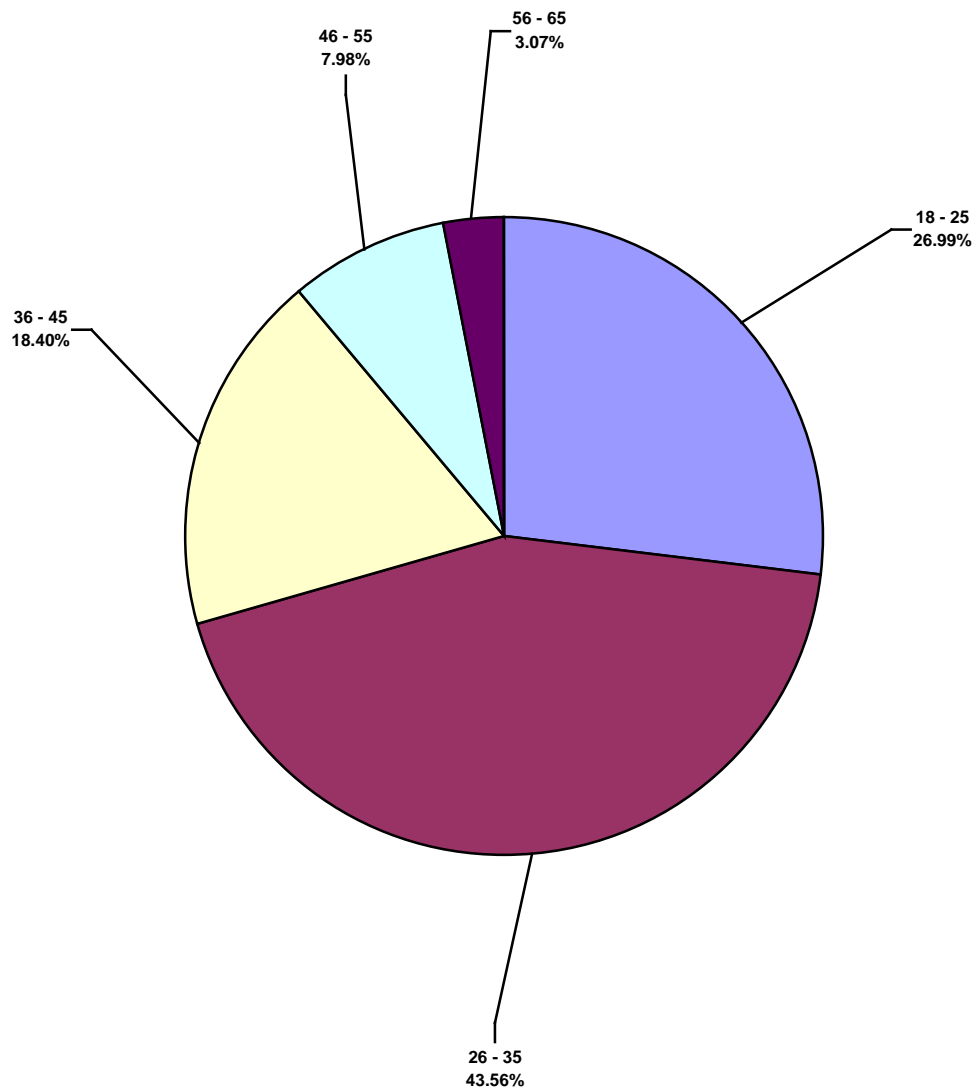
US Land Total Lost Time Incidents by Time of Day (Chart 17)
Based on 189 Incidents



US Land Total Recordable Incidents by Time of Day (Chart 18)
Based on 760 Incidents



US Land Total Lost Time Incidents by Age (Chart 19)
Based on 163 Incidents



US Land Total Recordable Incidents by Age (Chart 20)
Based on 683 Incidents

