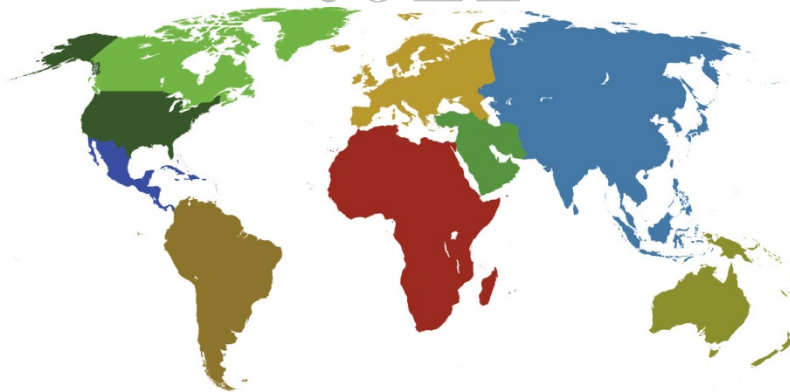




IADC

**IADC
ISP PROGRAM**

2014



**Summary of Occupational
Incidents
(Central America & Caribbean Land
Totals)**

Issued 15 June 2015

Table of Contents

(Table of Contents is Hyperlinked, Just click on Topic & go)

IADC 2014 CENTRAL AMERICA & CARIBBEAN LAND TOTALS (TABLE 1)	1
<i>Central America & Caribbean Land Total Incidence Rates vs Man-hours (Figure 1)</i>	<i>1</i>
IADC 2014 CENTRAL AMERICA & CARIBBEAN LAND CHARTS	2
<i>Central America & Caribbean Land Total Lost Time Incidents by Month (Chart 1).....</i>	<i>2</i>
<i>Central America & Caribbean Land Total Recordable Incidents by Month (Chart 2).....</i>	<i>3</i>
<i>Central America & Caribbean Land Total Lost Time Incidents by Occupation (Chart 3).....</i>	<i>4</i>
<i>Central America & Caribbean Land Total Recordable Incidents by Occupation (Chart 4).....</i>	<i>5</i>
<i>Central America & Caribbean Land Total Lost Time Incidents by Body Part (Chart 5).....</i>	<i>6</i>
<i>Central America & Caribbean Land Total Recordable Incidents by Body Part (Chart 6).....</i>	<i>7</i>
<i>Central America & Caribbean Land Total Lost Time Incidents by Incident Type (Chart 7).....</i>	<i>8</i>
<i>Central America & Caribbean Land Total Recordable Incidents by Incident Type(Chart 8).....</i>	<i>9</i>
<i>Central America & Caribbean Land Total Lost Time Incidents by Equipment (Chart 9).....</i>	<i>10</i>
<i>Central America & Caribbean Land Total Recordable Incidents by Equipment (Chart 10).....</i>	<i>11</i>
<i>Central America & Caribbean Land Total Lost Time Incidents by Operation (Chart 11).....</i>	<i>12</i>
<i>Central America & Caribbean Land Total Recordable Incidents by Operation (Chart 12).....</i>	<i>13</i>
<i>Central America & Caribbean Land Total Lost Time Incidents by Location (Chart 13).....</i>	<i>14</i>
<i>Central America & Caribbean Land Total Recordable Incidents by Location (Chart 14).....</i>	<i>15</i>
<i>Central America & Caribbean Land Total Lost Time Incidents by Time in Service(Chart 15).....</i>	<i>16</i>
<i>Centrla America & Caribbean Land Total Recordable Incidents by Time in Service(Chart 16).....</i>	<i>17</i>
<i>Central America & Carribbean Land Total Lost Time Incidents by Time of Day (Chart 17).....</i>	<i>18</i>
<i>Central America & Carribbean Land Total Recordable Incidents by Time of Day (Chart 18).....</i>	<i>19</i>
<i>Central America & Carribbean Land Total Lost Time Incidents by Age (Chart 19).....</i>	<i>20</i>
<i>Central America & Carribbean Land Total Recordable Incidents by Age (Chart 20).....</i>	<i>21</i>
IADC 2014 CENTRAL AMERICA & CARIBBEAN LAND PARTICIPANT DETAIL BY CATEGORY (TABLE 2)	22

IADC 2014 Central America & Caribbean Land Totals (Table 1)

	<u>Total</u>
Total Manhours	8,351,724
Total Medical Treatment Incidents	7
Total Restricted Work Incidents	2
Total Lost Time Incidents	18
Total Fatalities	0
Total Recordables	27
MTO Incidence Rate	0.17
RWC Incidence Rate	0.05
LTI Incidence Rate	0.43
LTI Frequency Rate	2.16
DART Incidence Rate	0.48
DART Frequency Rate	2.39
Recordable Incidence Rate	0.65
Recordable Frequency Rate	3.23

Companies Reporting: Land – 6

Medical Treatment Incidence Rate = MTOs X 200,000

Restricted Work Incidence Rate = RWCs X 200,000

Lost Time Incidence Rate = LTIs + FTLs X 200,000

DART Incidence Rate = LTIs + RWC X 200,000

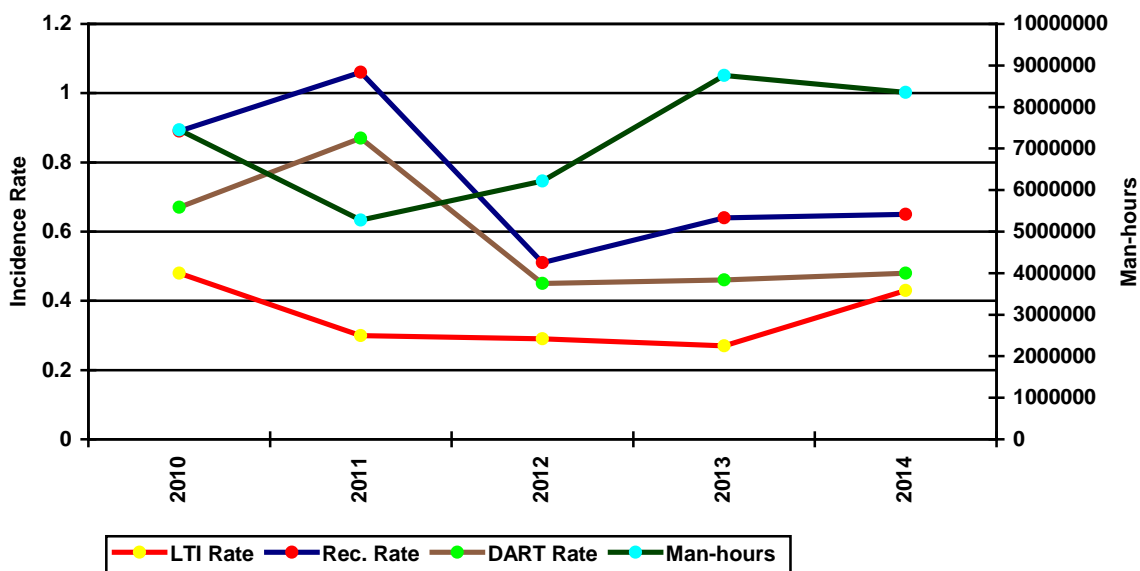
Recordable Incidence Rate = RCRD X 200,000

Lost Time Frequency Rate = LTIs +FTLs X 1,000,000

DART Frequency Rate = LTIs + RWC X 1,000,000

Recordable Frequency Rate = RCRD X 1,000,000

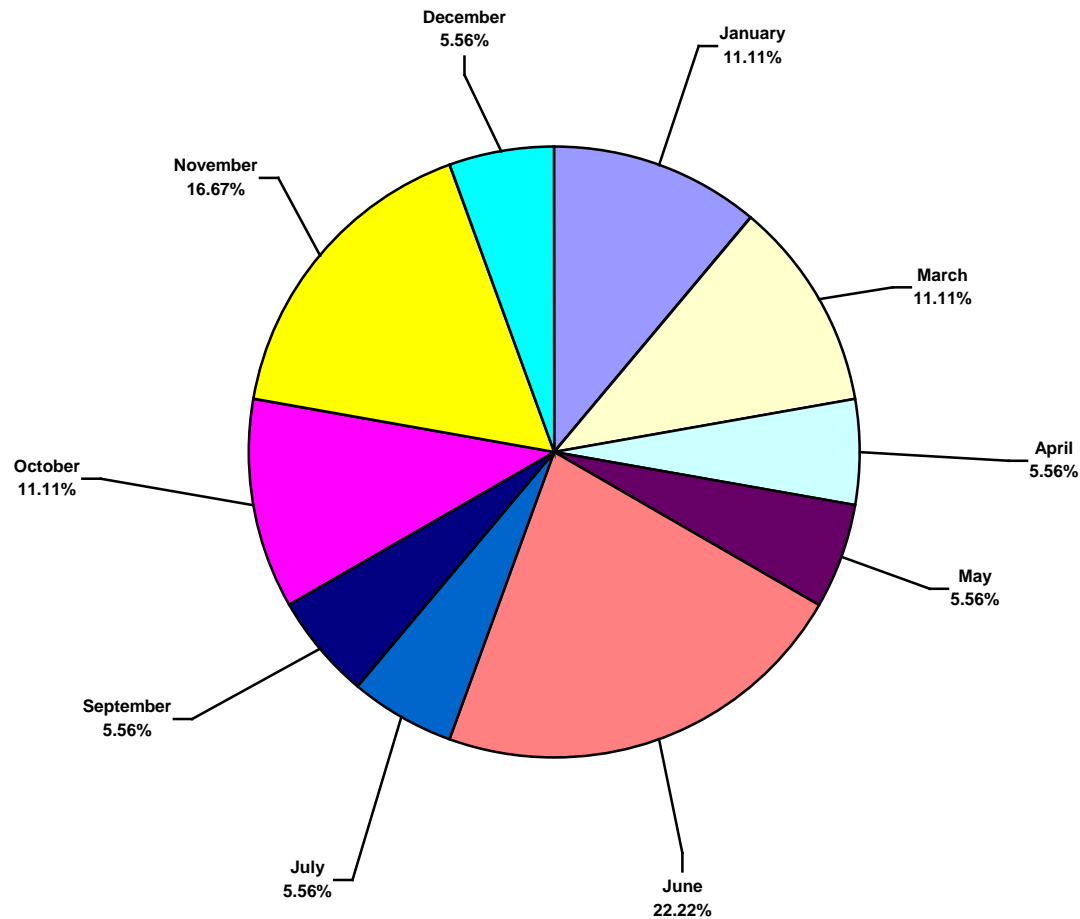
Central America & Caribbean Land Total Incidence Rates vs Man-hours (Figure 1)



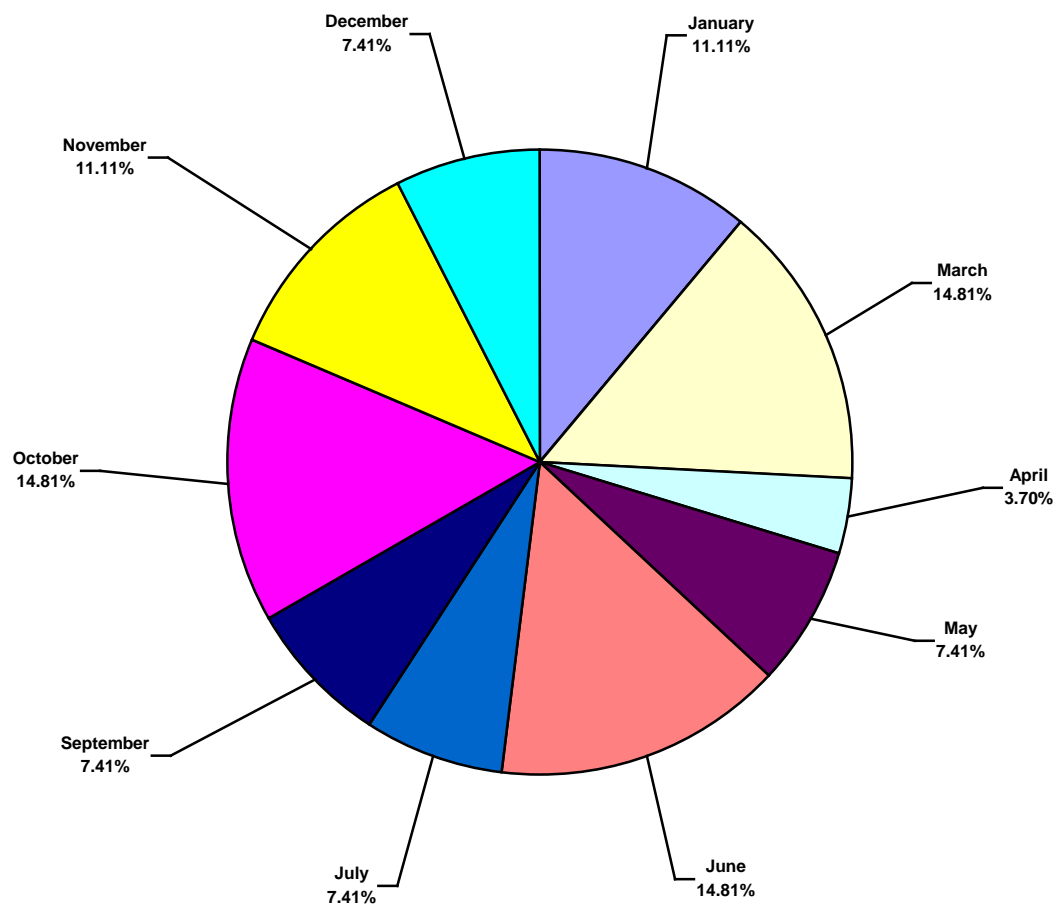
IADC 2014 Central America & Caribbean Land Charts

Central America & Caribbean Land Total Lost Time Incidents by Month (Chart 1)

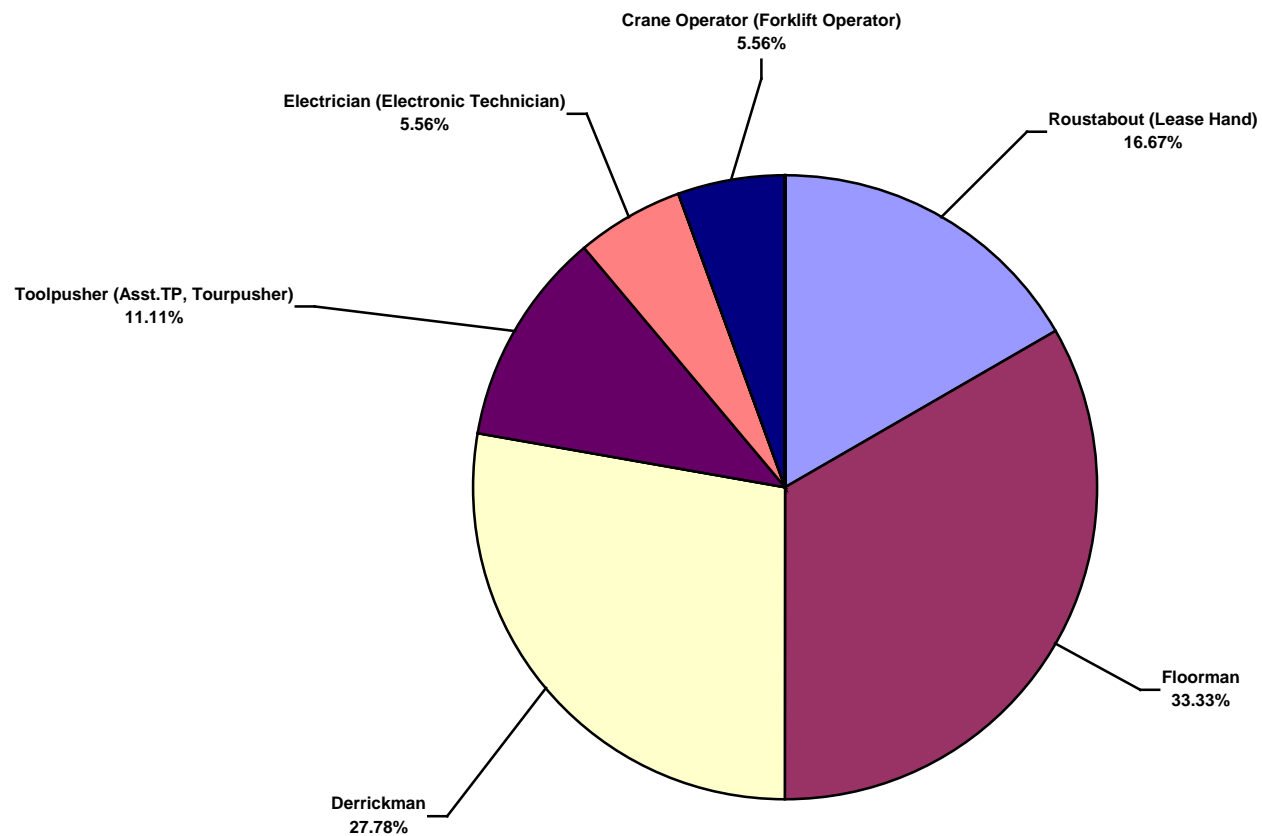
Based on 18 Incidents



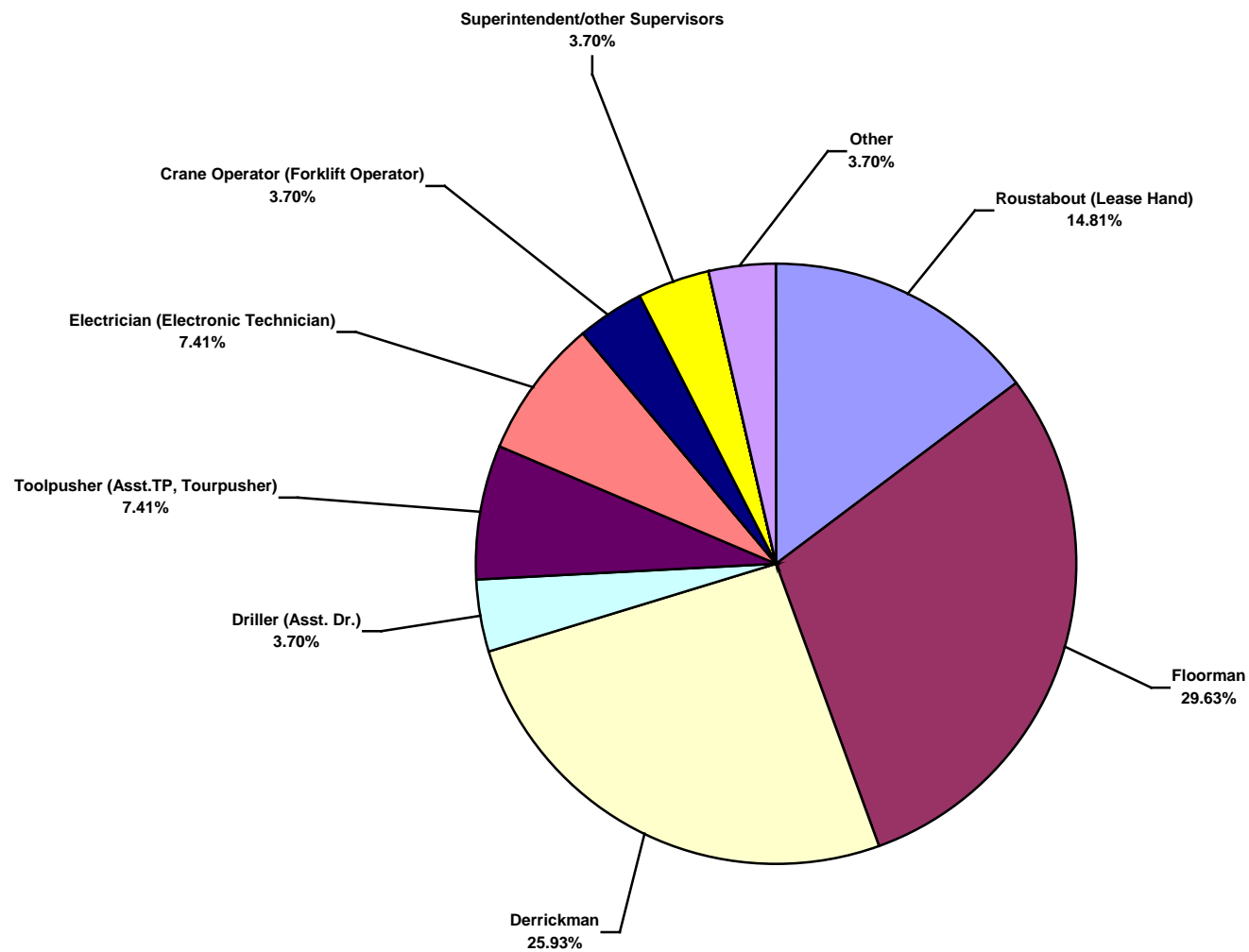
Central America & Caribbean Land Total Recordable Incidents by Month (Chart 2)
Based on 27 Incidents



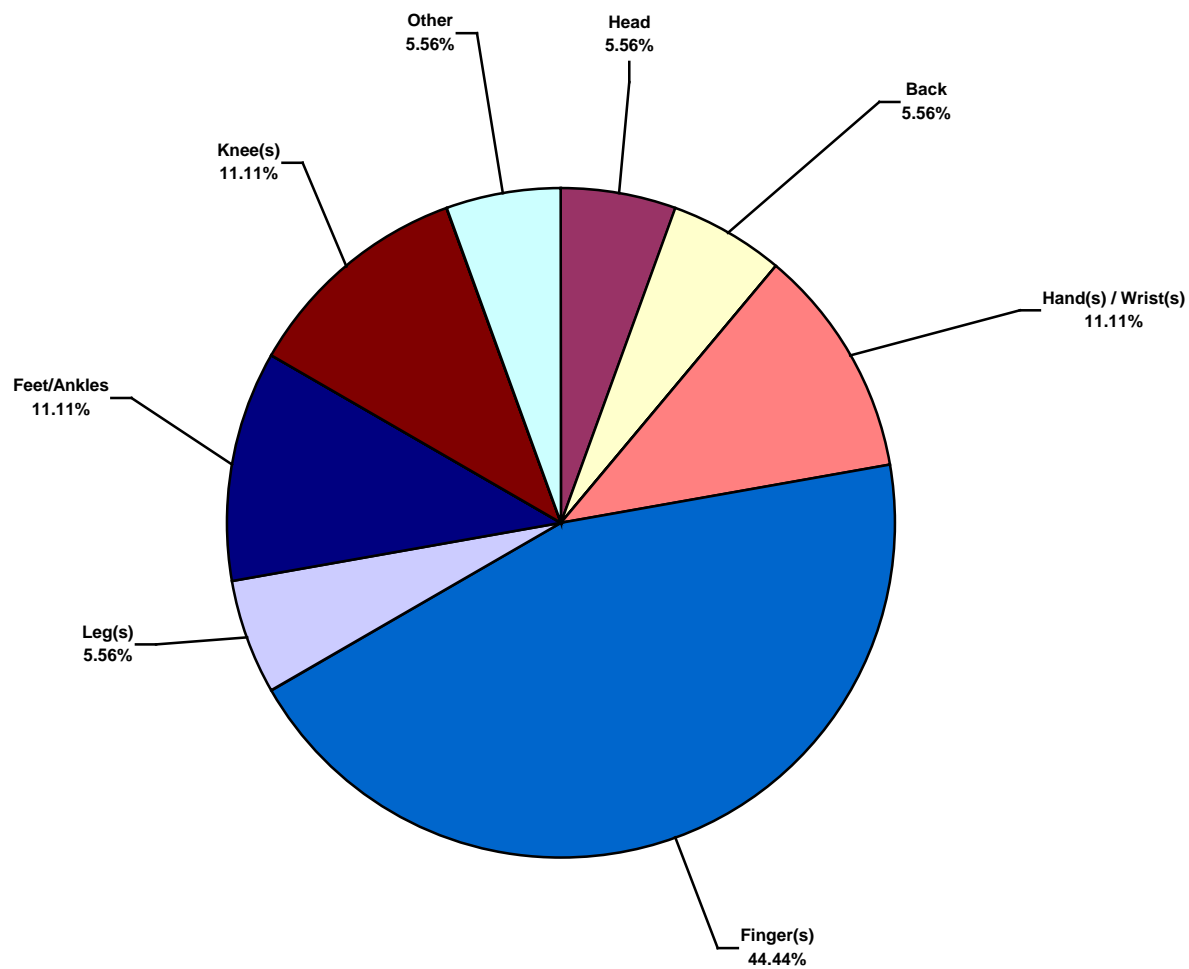
Central America & Caribbean Land Total Lost Time Incidents by Occupation (Chart 3)
Based on 18 Incidents



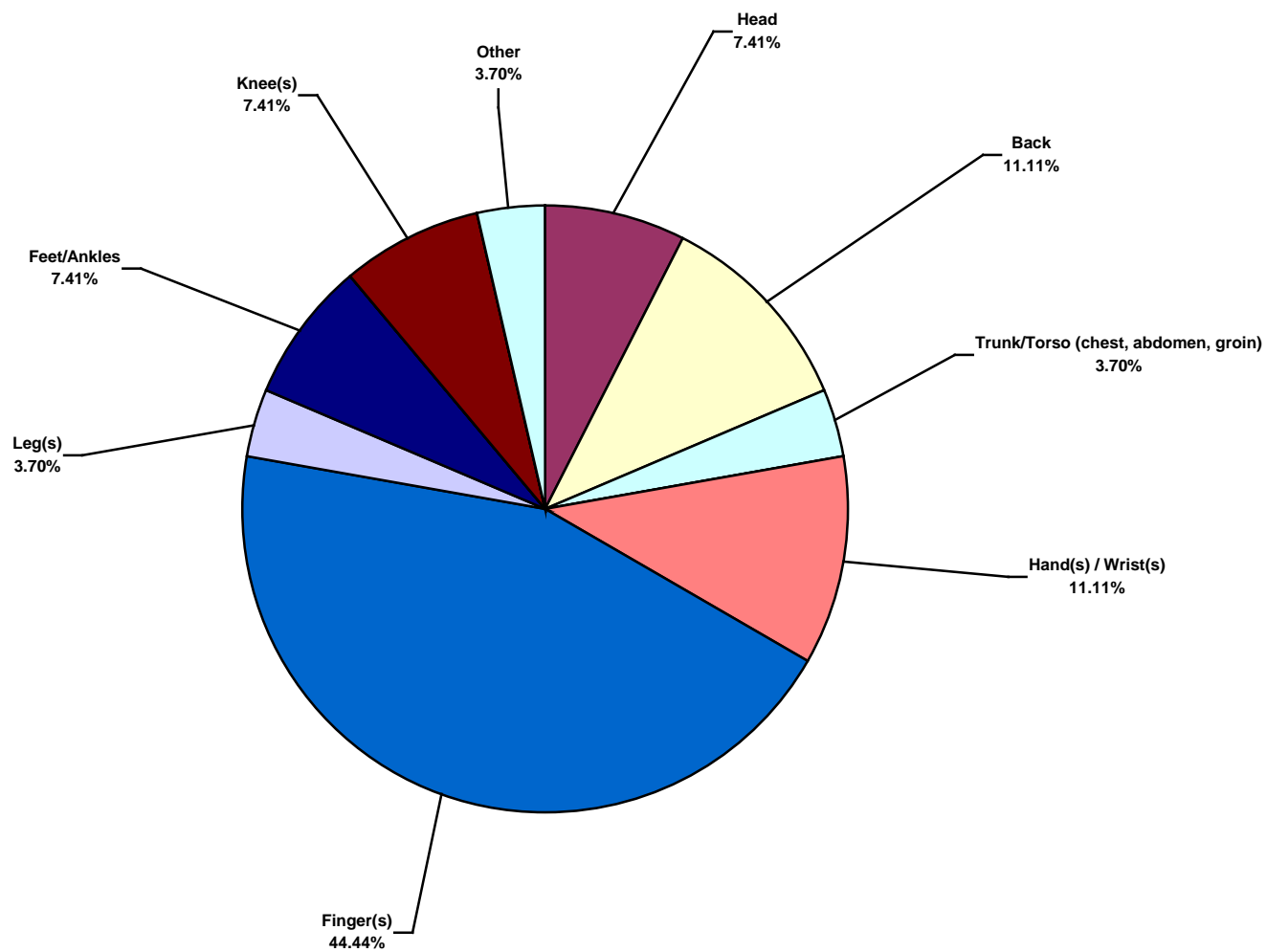
Central America & Caribbean Recordable Incidents by Occupation (Chart 4)
Based on 27 Incidents



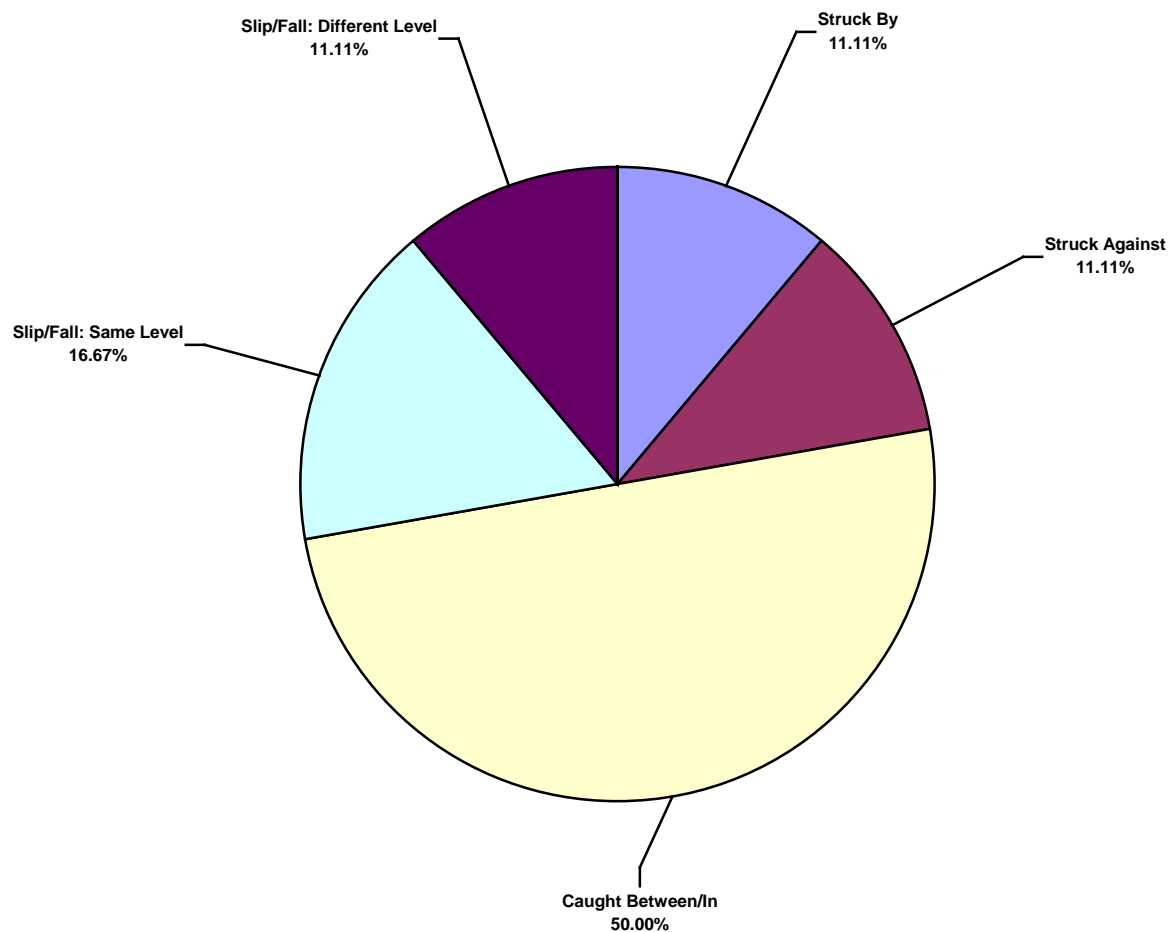
Central America & Caribbean Land Total Lost Time Incidents by Body Part (Chart 5)
Based on 18 Incidents



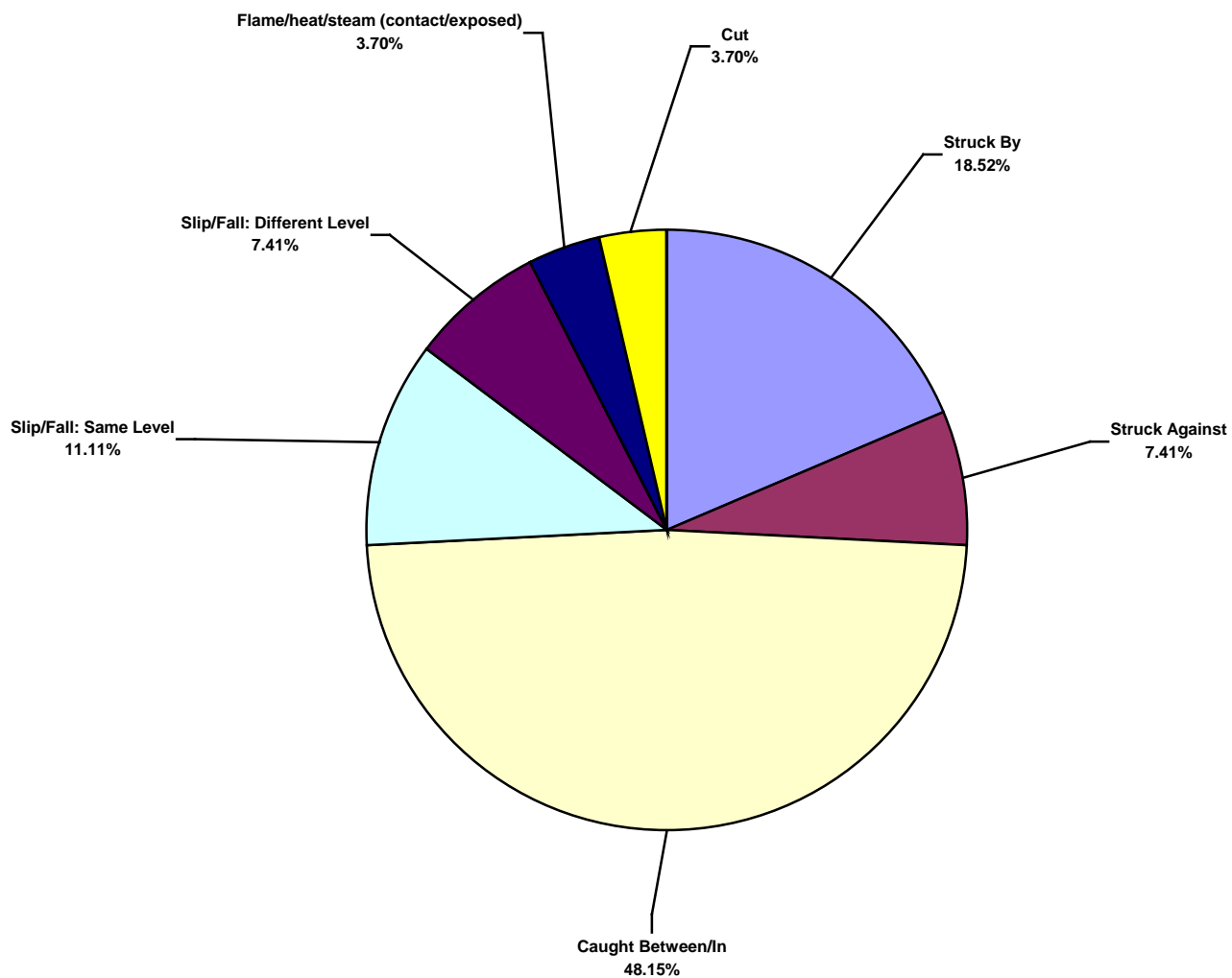
Central America & Caribbean Land Total Recordable Incidents by Body Part (Chart 6)
Based on 27 Incidents



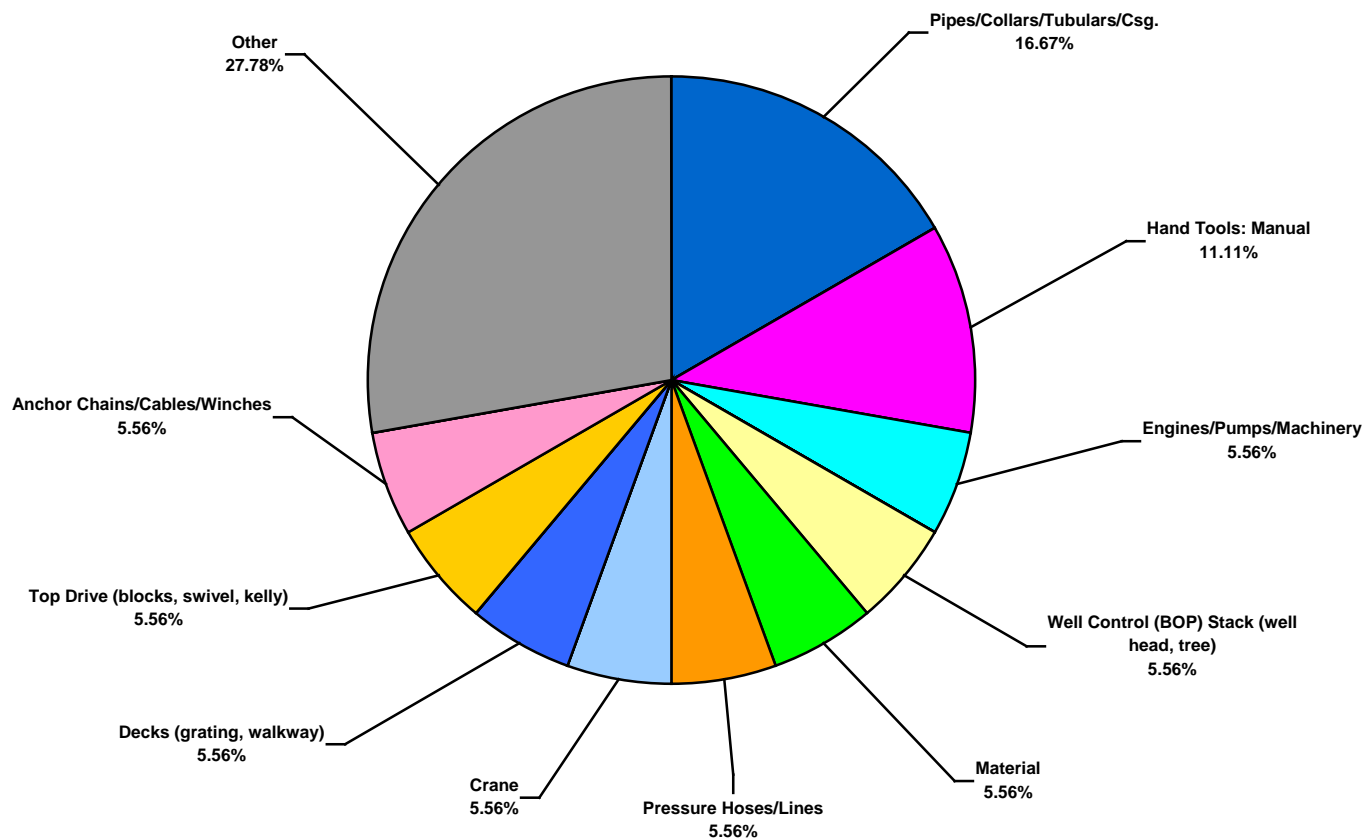
Central America & Caribbean Land Total Lost Time Incidents by Incident Type (Chart 7) Based on 18 Incidents



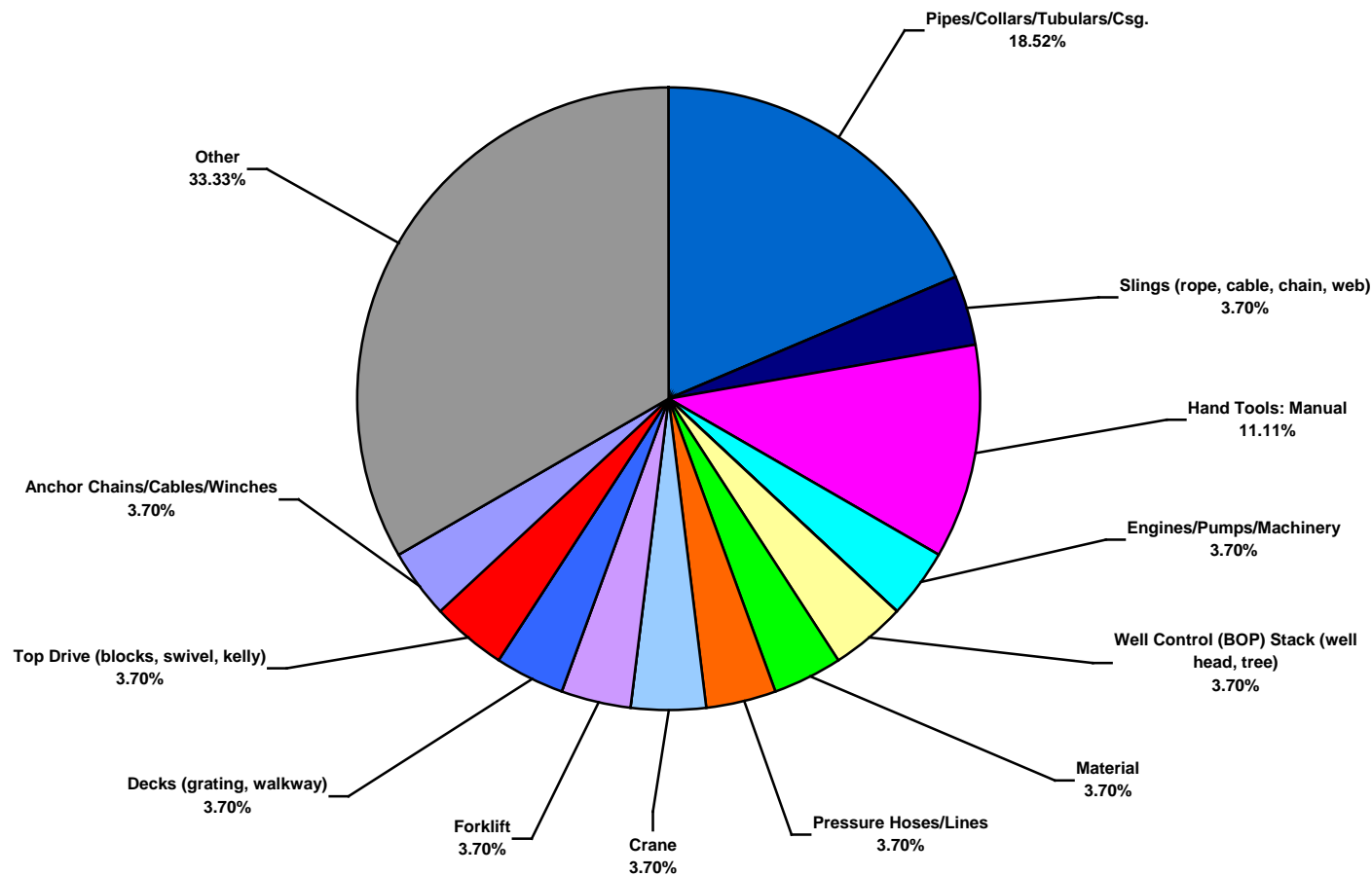
Central America & Caribbean Land Total Recordable Incidents by Incident Type (Chart 8)
Based on 27 Incidents



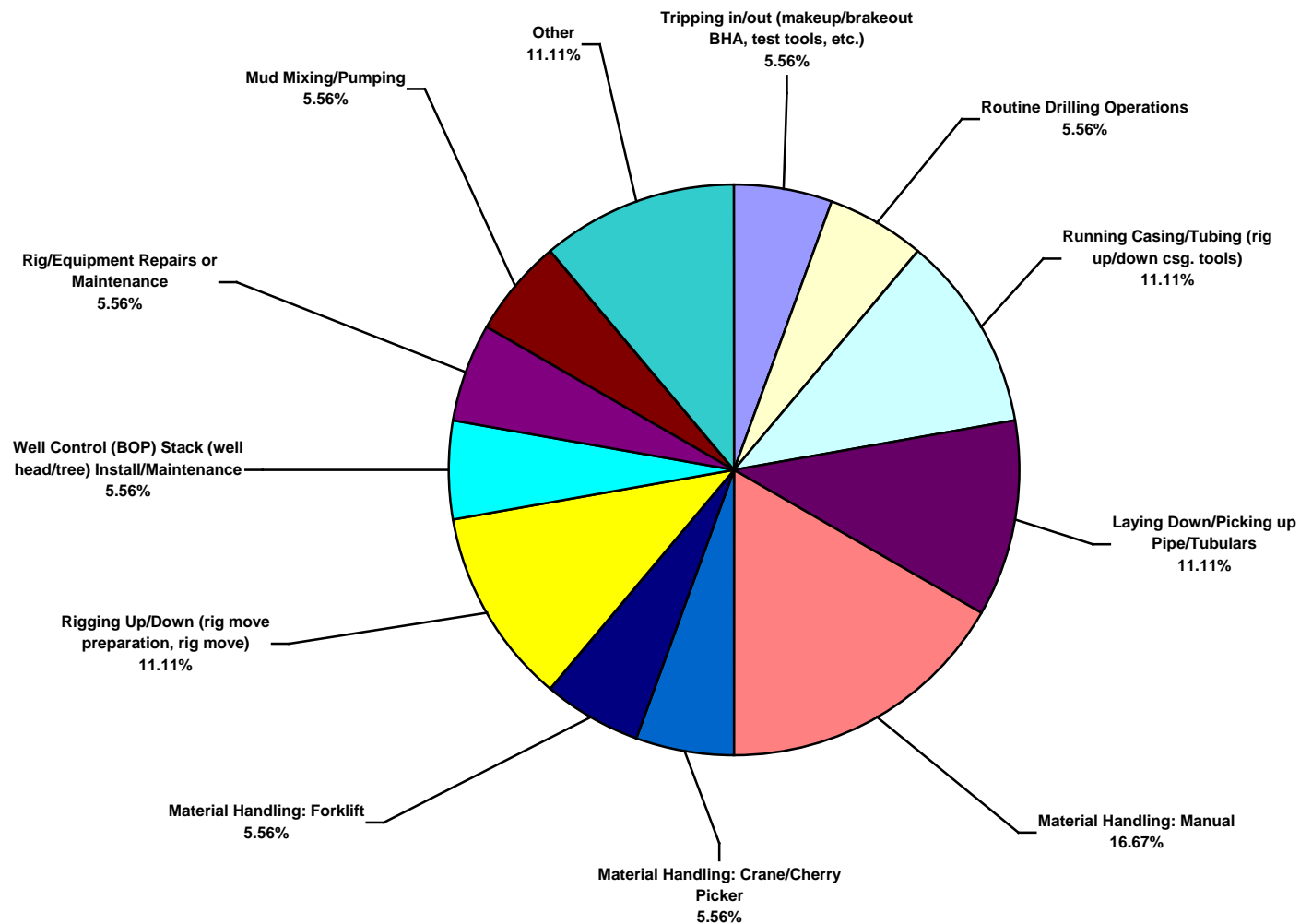
Central America & Caribbean Land Total Lost Time Incidents by Equipment (Chart 9)
Based on 18 Incidents



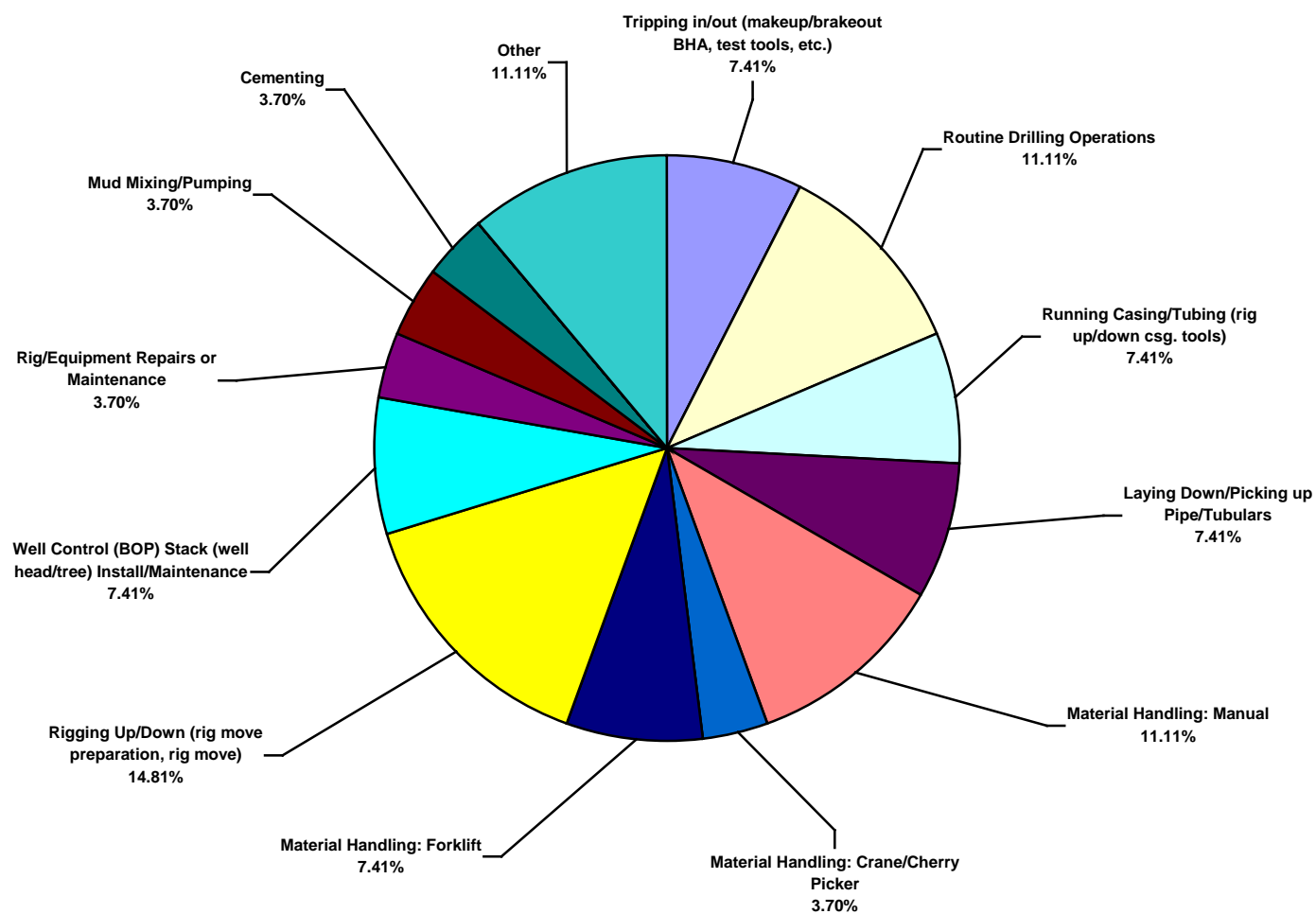
Central America & Caribbean Land Total Recordable Incidents by Equipment (Chart 10)
Based on 27 Incidents



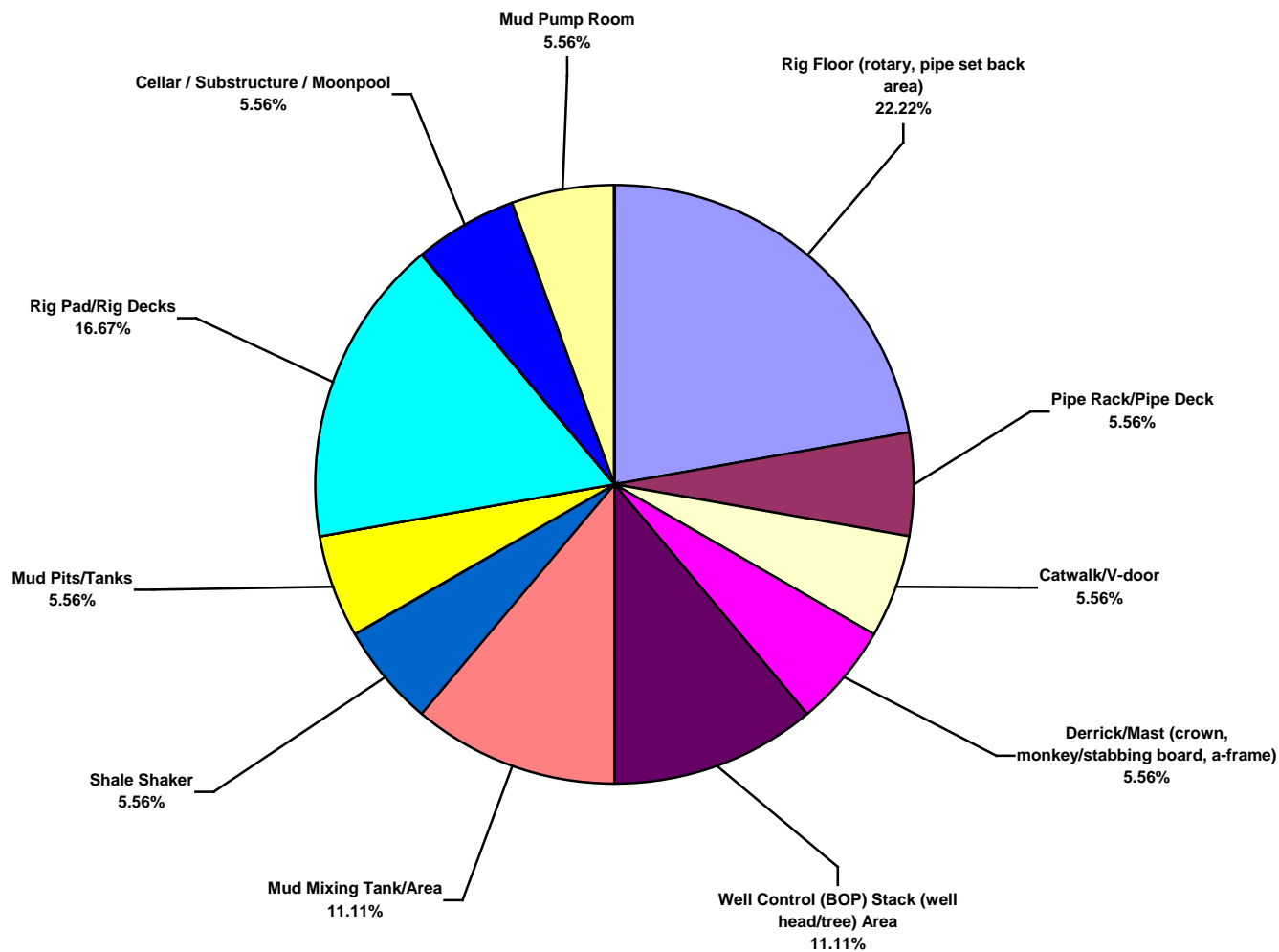
Central America & Caribbean Land Total Lost Time Incidents by Operation (Chart 11)
Based on 18 Incidents



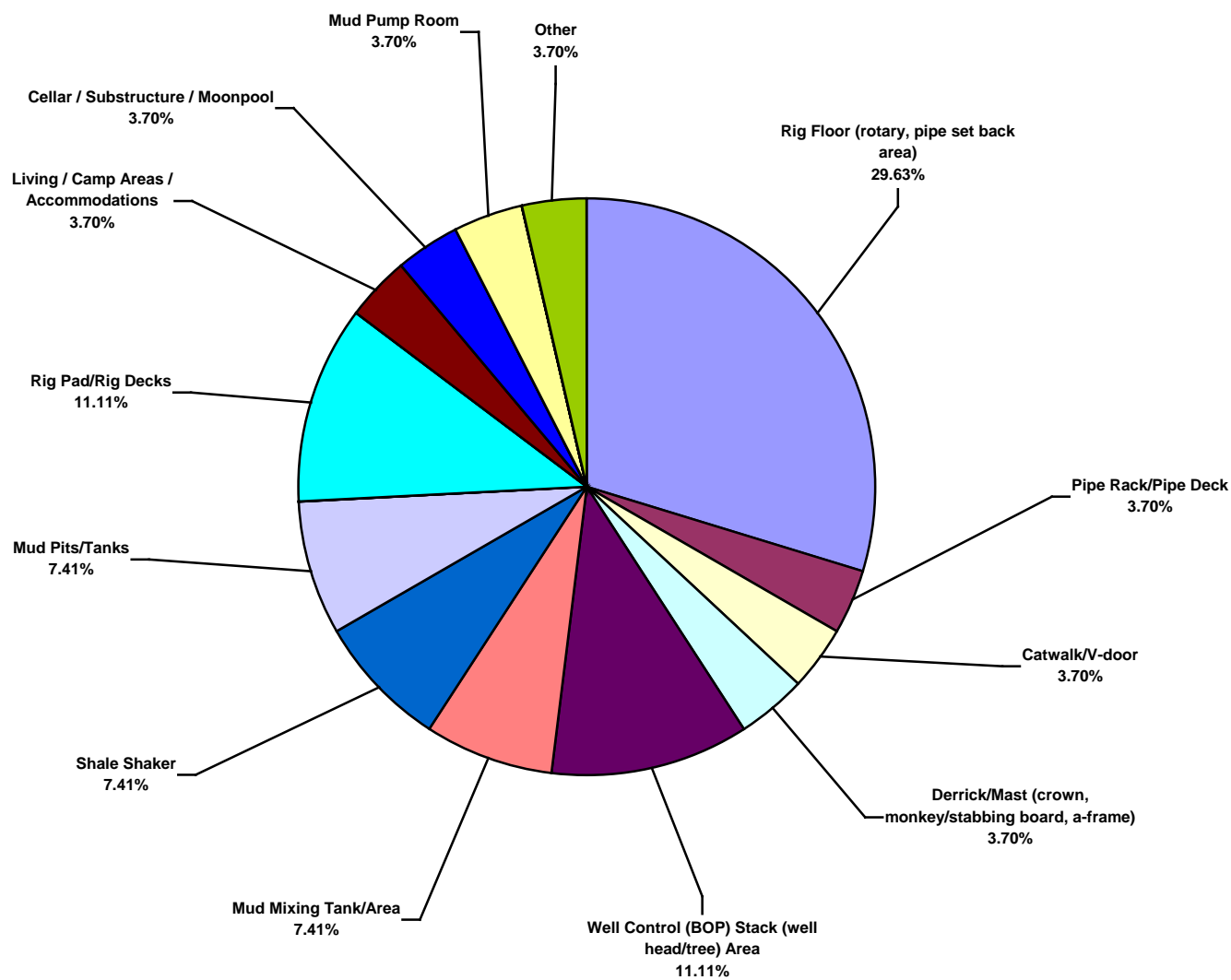
Central America & Caribbean Land Total Recordable Incidents by Operation (Chart 12)
Based on 27 Incidents



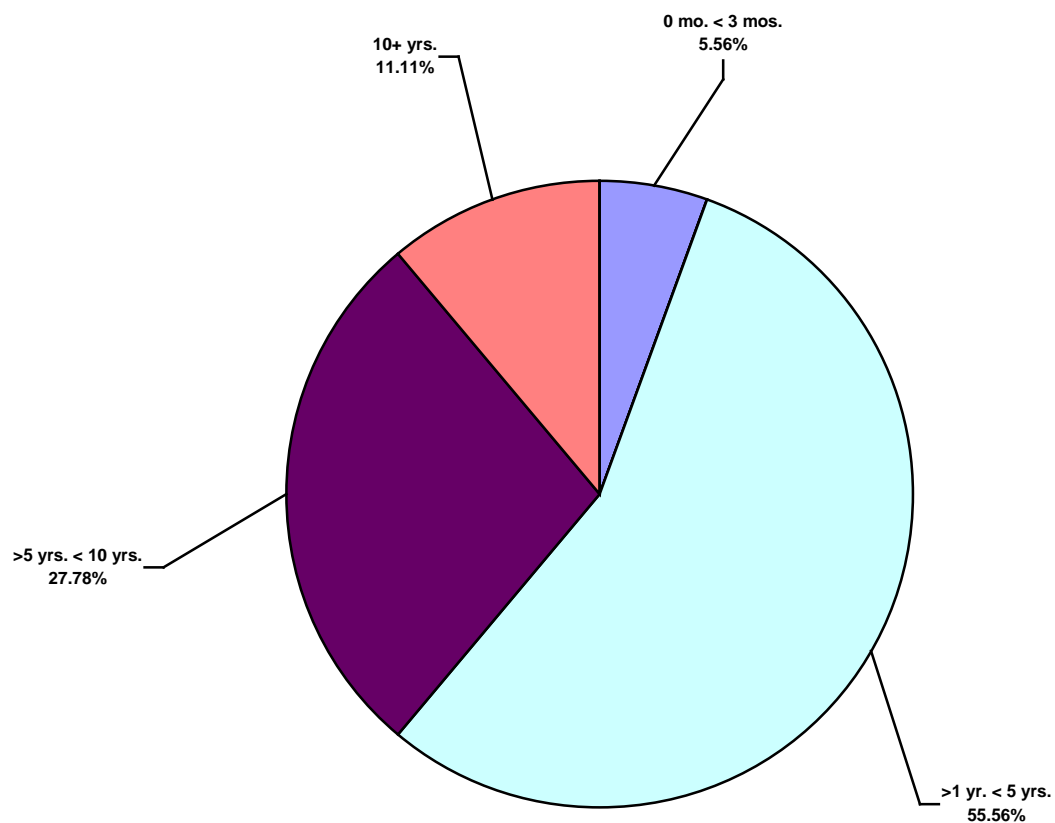
Central America & Caribbean Land Total Lost Time Incidents by Location (Chart 13)
Based on 18 Incidents



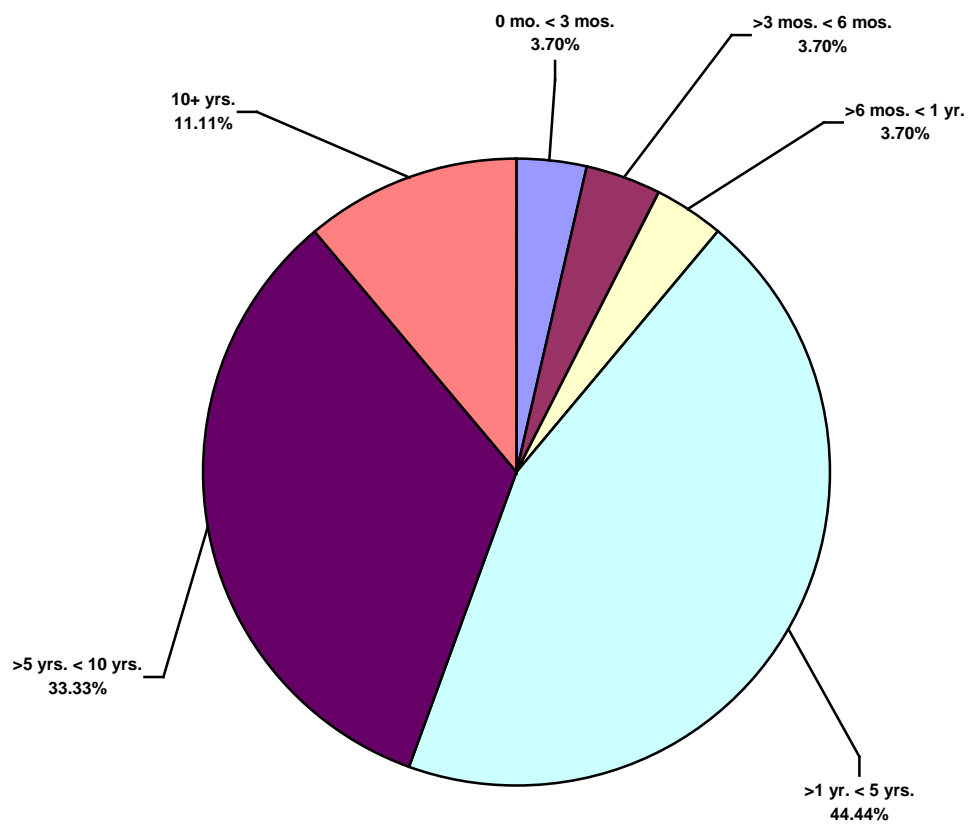
Central America & Caribbean Land Total Recordable Incidents by Location (Chart 14)
Based on 27 Incidents



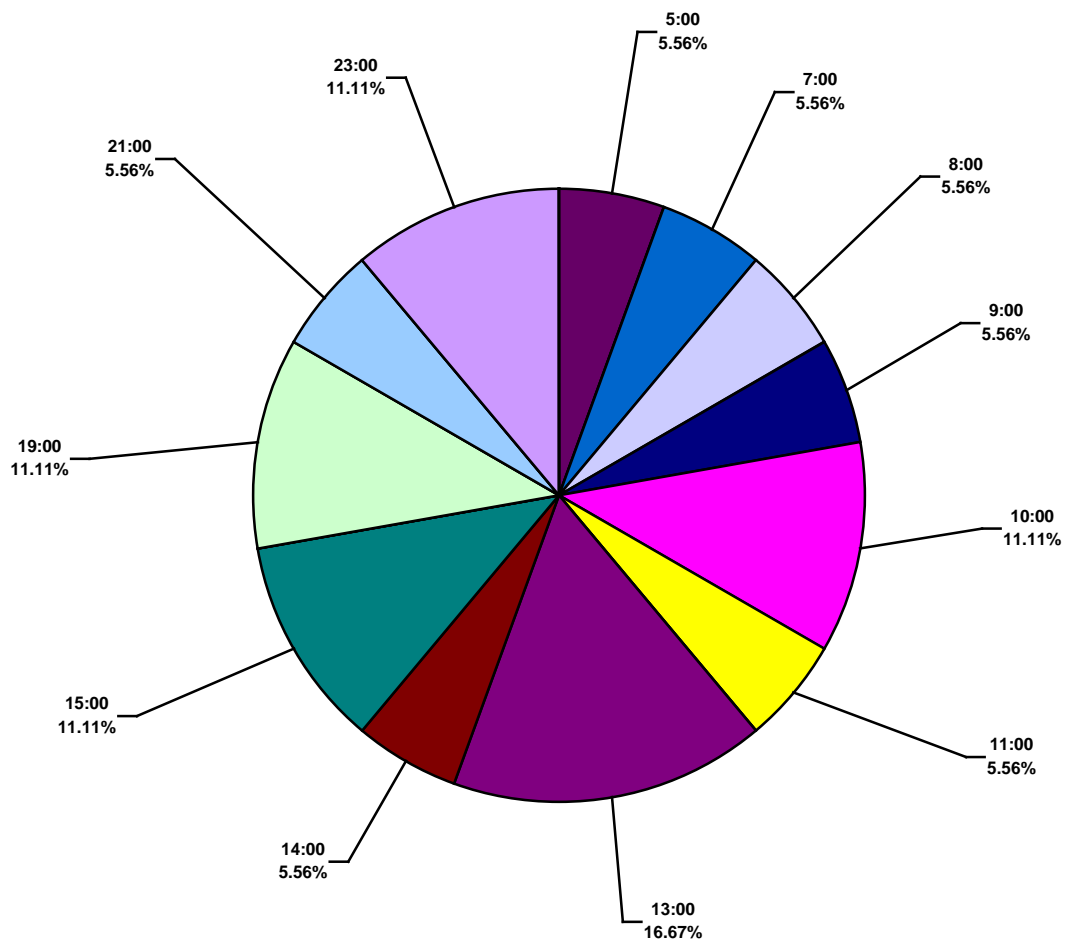
Central America & Caribbean Land Total Lost Time Incidents by Time in Service (Chart 15)
Based on 18 Incidents



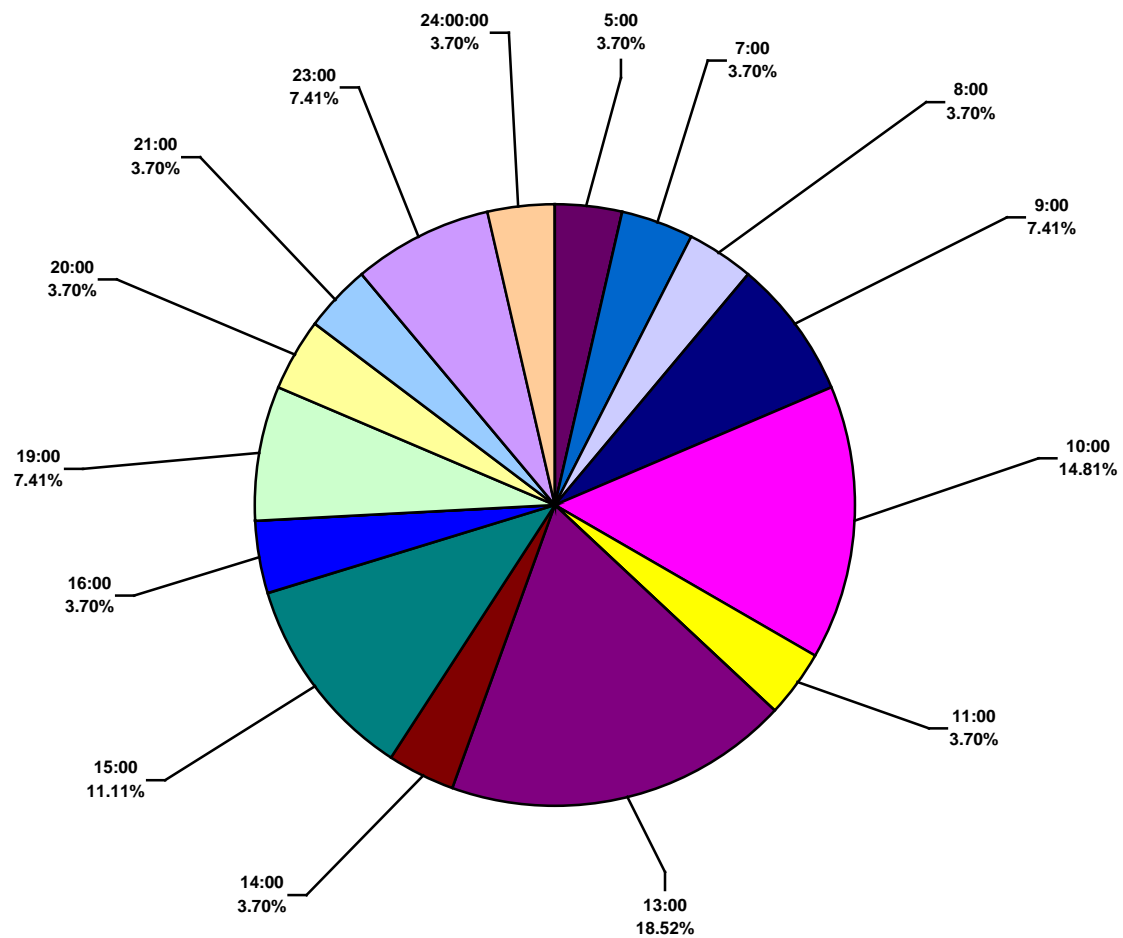
Central America & Caribbean Land Total Recordable Incidents by Time in Service (Chart 16)
Based on 27 Incidents



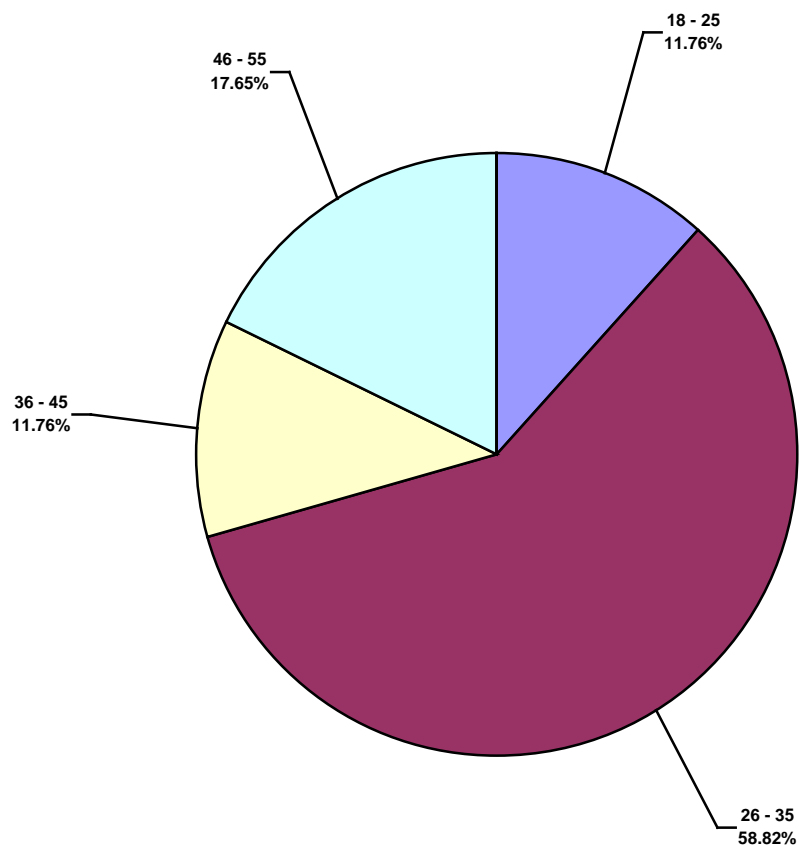
Central America & Caribbean Land Total Lost Time Incidents by Time of Day (Chart 17)
Based on 18 Incidents



Central America & Caribbean Land Total Recordable Incidents by Time of Day (Chart 18)
Based on 27 Incidents



Central America & Caribbean Land Total Lost Time Incidents by Age (Chart 19)
Based on 17 Incidents



Central America & Caribbean Land Total Recordable Incidents by Age (Chart 20)
Based on 26 Incidents

