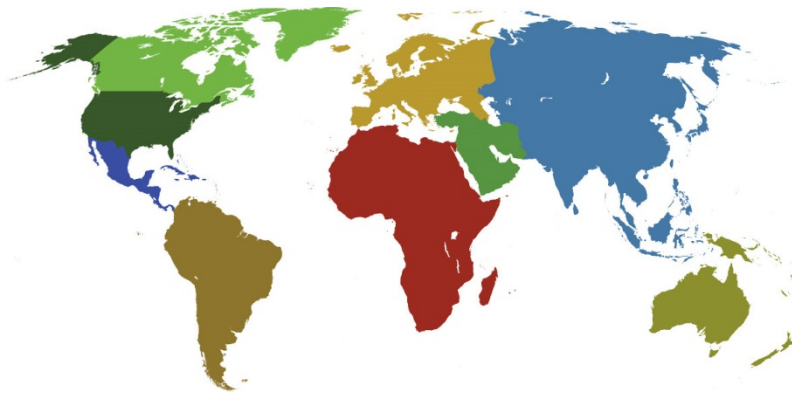




IADC

**IADC
ISP PROGRAM**

2014



**Summary of Occupational
Incidents
(European Water Totals)**

Issued 15 June 2015

Table of Contents

(Table of Contents is Hyperlinked, Just click on Topic & go)

IADC 2014 EUROPEAN WATER TOTALS (TABLE 1).....	1
<i>European Water Total Incidence Rates vs Man-hours (Figure 1)</i>	<i>1</i>
<i>European Water Total Lost Time Incidents by Month (Chart 1).....</i>	<i>2</i>
<i>European Water Total Recordable Incidents by Month (Chart 2)</i>	<i>3</i>
<i>European Water Total Lost Time Incidents by Occupation (Chart 3).....</i>	<i>4</i>
<i>European Water Total Recordable Incidents by Occupation (Chart 4).....</i>	<i>5</i>
<i>European Water Total Lost Time Incidents by Body Part (Chart 5).....</i>	<i>6</i>
<i>European Water Total Recordable Incidents by Body Part (Chart 6)</i>	<i>7</i>
<i>European Water Total Lost Time Incidents by Incident Type (Chart 7)</i>	<i>8</i>
<i>European Water Total Recordable Incidents by Incident Type (Chart 8).....</i>	<i>9</i>
<i>European Water Total Lost Time Incidents by Equipment (Chart 9).....</i>	<i>10</i>
<i>European Water Total Recordable Incidents by Equipment (Chart 10)</i>	<i>11</i>
<i>European Water Total Lost Time Incidents by Operation (Chart 11).....</i>	<i>12</i>
<i>European Water Total Recordable Incidents by Operation (Chart 12)</i>	<i>13</i>
<i>European Water Total Lost Time Incidents by Location (Chart 13).....</i>	<i>14</i>
<i>European Water Total Recordable Incidents by Location (Chart 14)</i>	<i>15</i>
<i>European Water Total Lost Time Incidents by Time in Service (Chart 15)</i>	<i>16</i>
<i>European Water Total Recordable Incidents by Time in Service (Chart 16).....</i>	<i>17</i>
<i>European Water Total Lost Time Incidents by Time of Day (Chart 17)</i>	<i>18</i>
<i>European Water Total Recordable Incidents by Time of Day (Chart 18).....</i>	<i>19</i>
<i>European Water Total Lost Time Incidents by Age (Chart 19).....</i>	<i>20</i>
<i>European Water Total Recordable Incidents by Age (Chart 20)</i>	<i>21</i>
IADC 2014 European Water Participant Detail by Category	22

IADC 2014 European Water Totals (Table 1)

	<u>Total</u>
Total Man-hours	39,307,901
Total Medical Treatment Incidents	67
Total Restricted Work Incidents	38
Total Lost Time Incidents	38
Total Fatalities	0
Total Recordables	143
MTO Incidence Rate	0.34
RWC Incidence Rate	0.19
LTI Incidence Rate	0.19
LTI Frequency Rate	0.97
DART Incidence Rate	0.39
DART Frequency Rate	1.93
Recordable Incidence Rate	0.73
Recordable Frequency Rate	3.64

Companies Reporting: Water – 22

Medical Treatment Incidence Rate = MTOs X 200,000

Restricted Work Incidence Rate = RWCs X 200,000

Lost Time Incidence Rate = LTIs + FTLs X 200,000

DART Incidence Rate = LTIs + RWC X 200,000

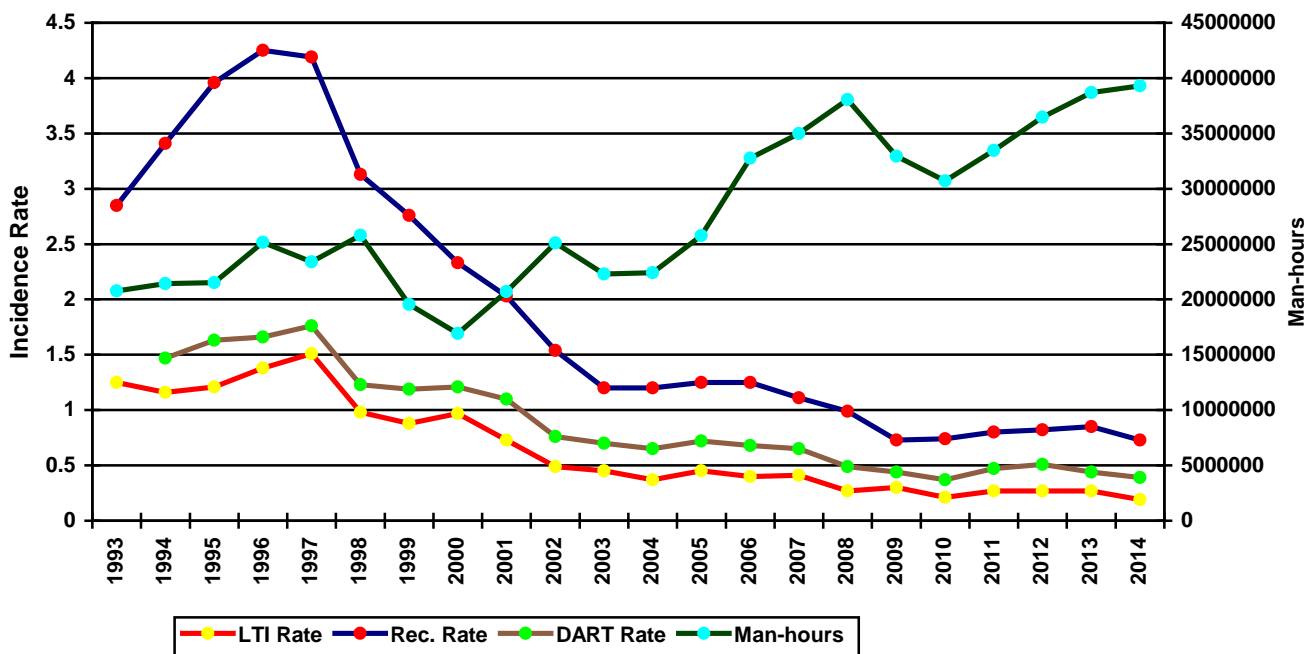
Recordable Incidence Rate = RCRD X 200,000

Lost Time Frequency Rate = LTIs +FTLs X 1,000,000

DART Frequency Rate = LTIs + RWC X 1,000,000

Recordable Frequency Rate = RCRD X 1,000,000

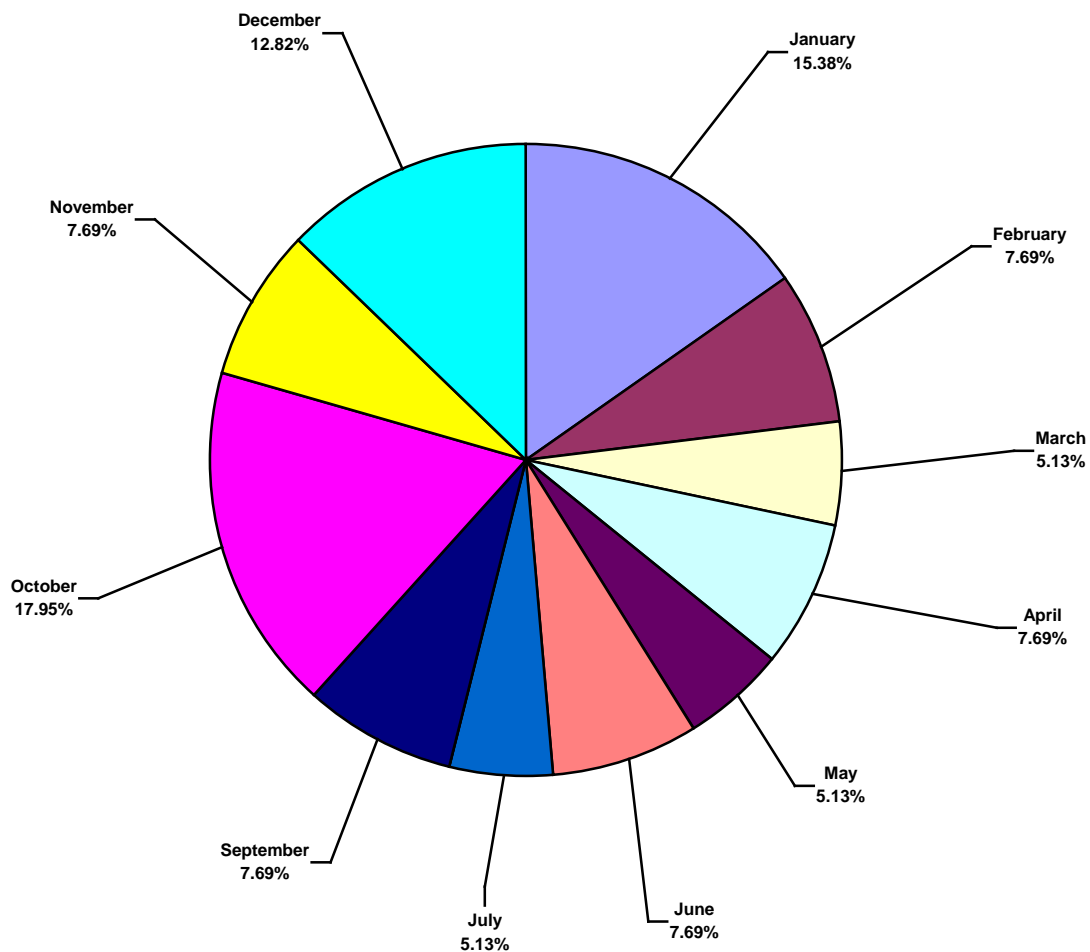
European Water Total Incidence Rates vs Man-hours (Figure 1)



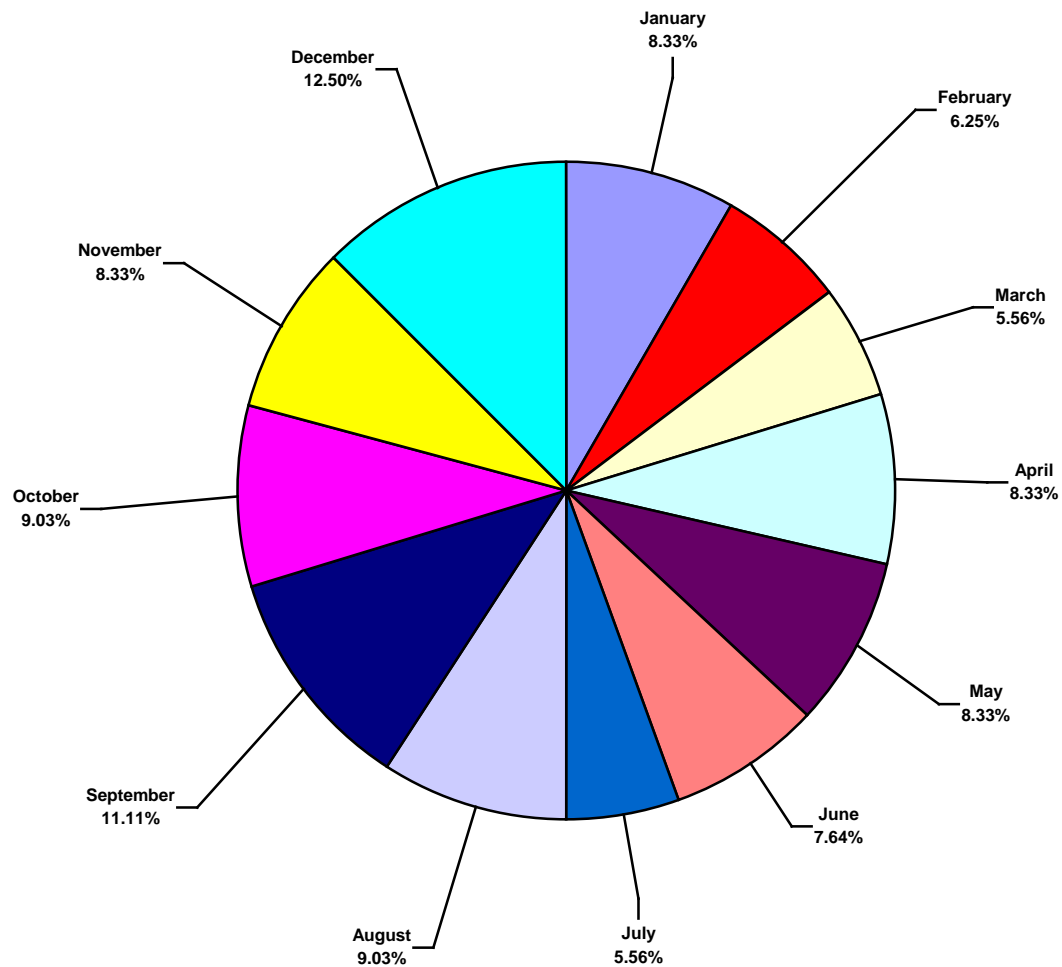
IADC 2014 European Water Charts

European Water Total Lost Time Incidents by Month (Chart 1)

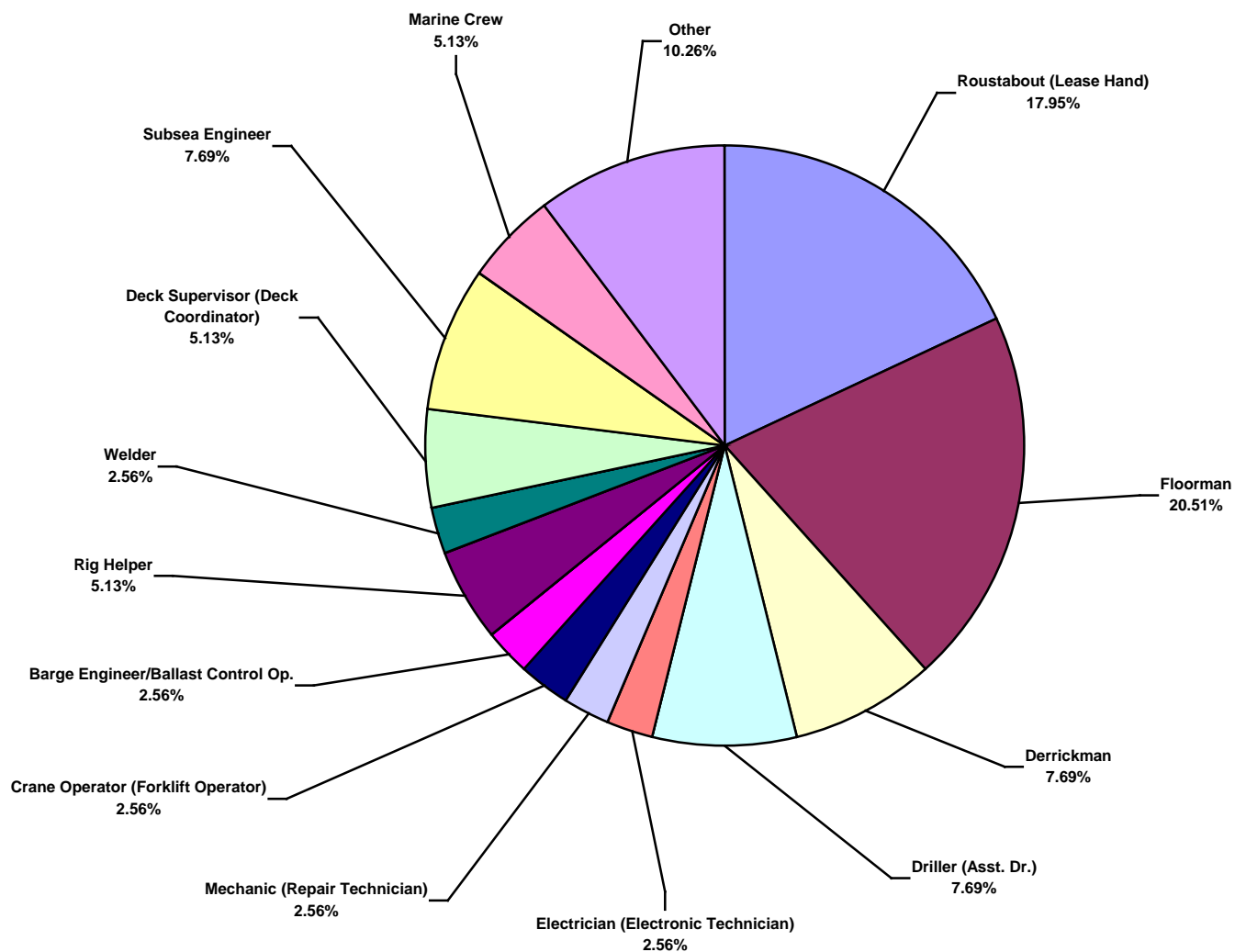
Based on 39 Incidents



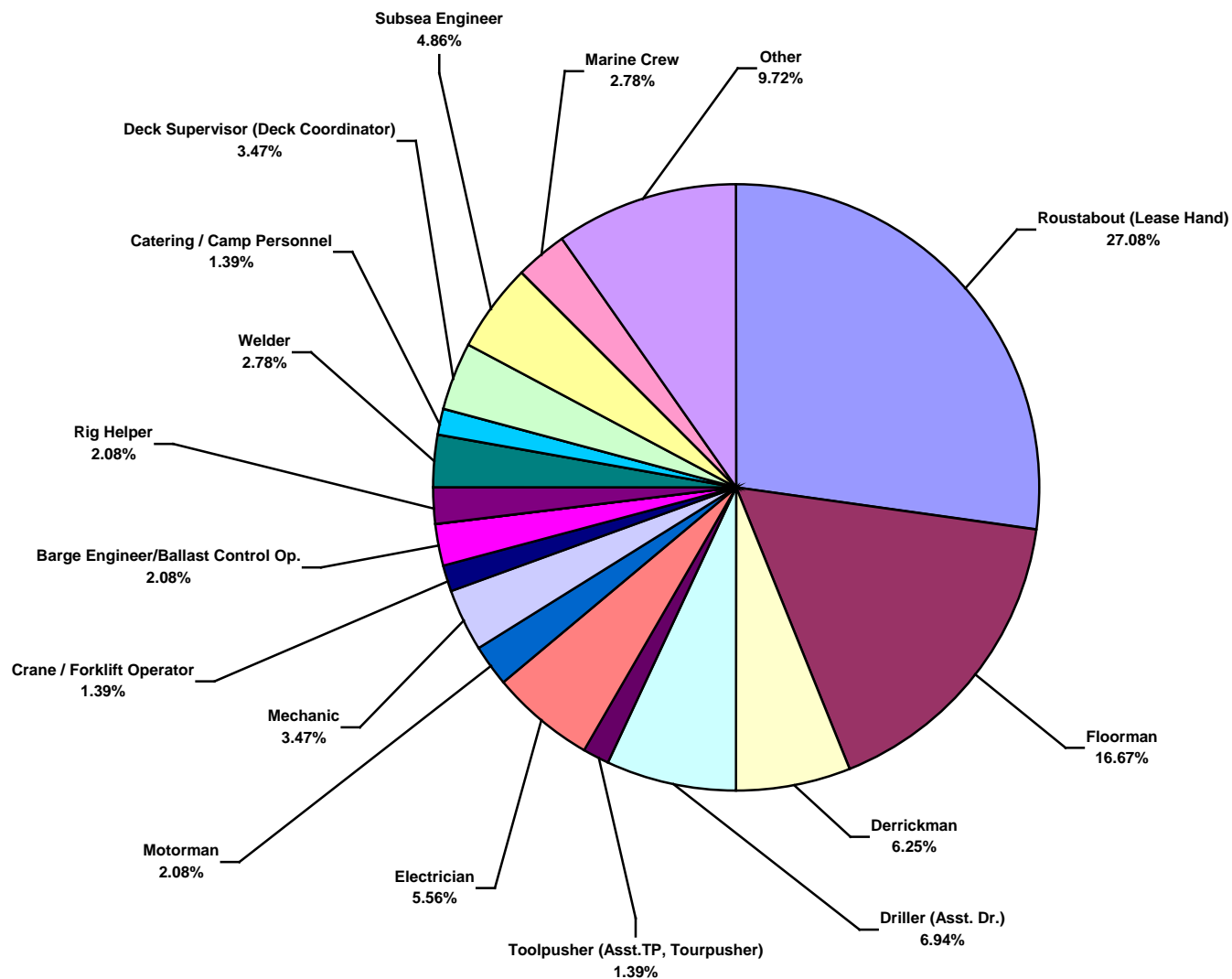
European Water Total Recordable Incidents by Month (Chart 2)
Based on 144 Incidents



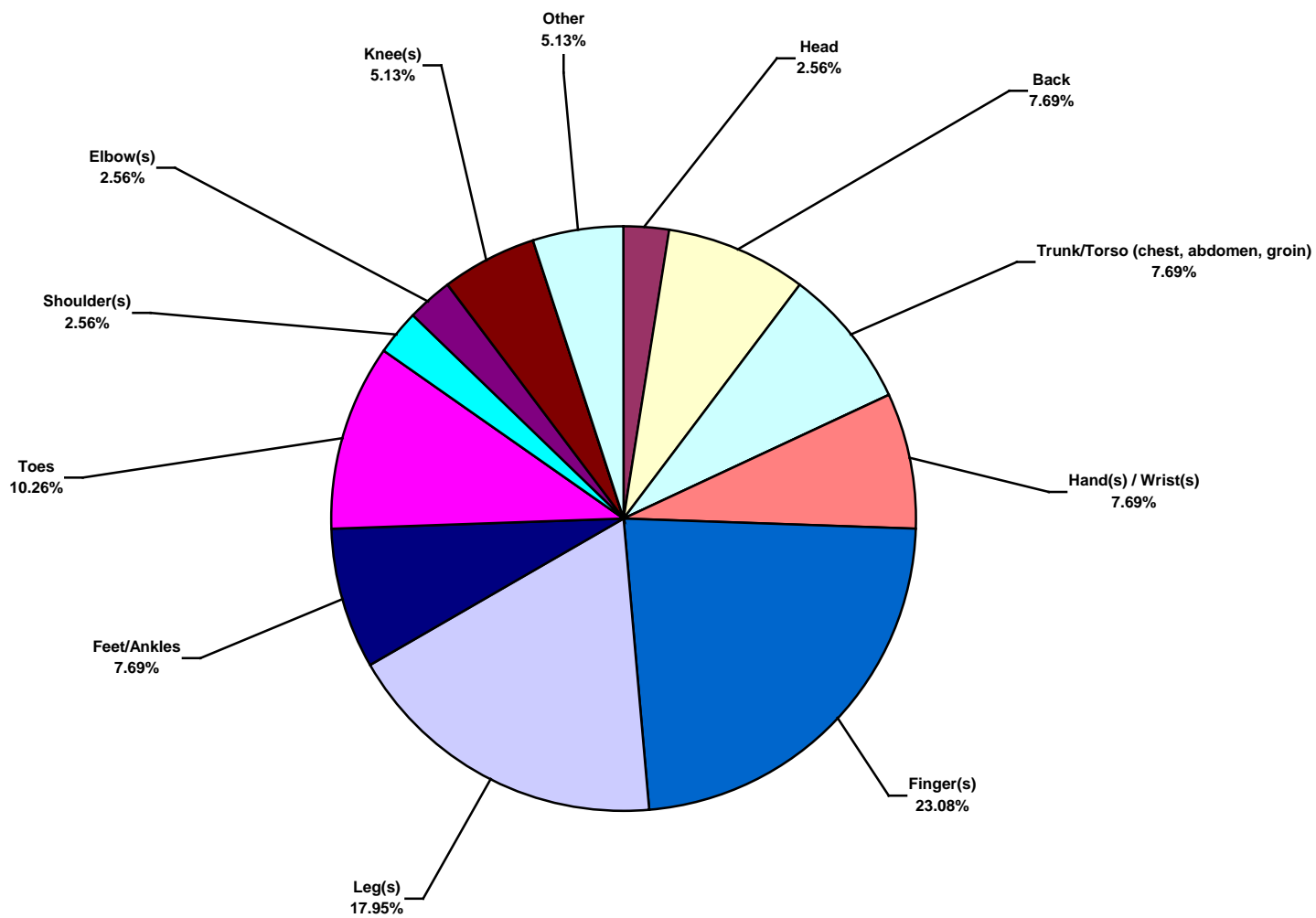
European Water Total Lost Time Incidents by Occupation (Chart 3)
Based on 39 Incidents



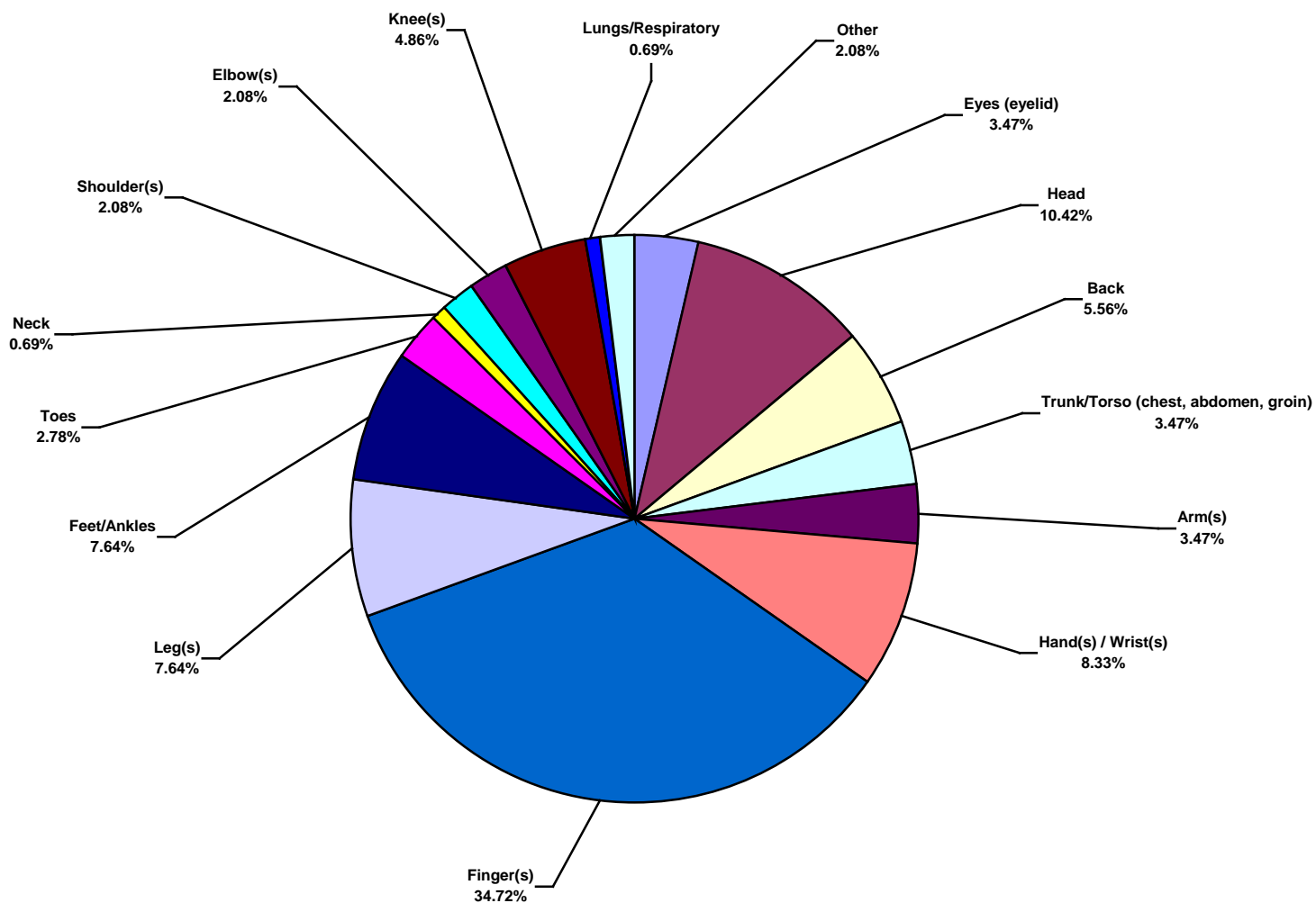
European Water Total Recordable Incidents by Occupation (Chart 4)
Based on 144 Incidents



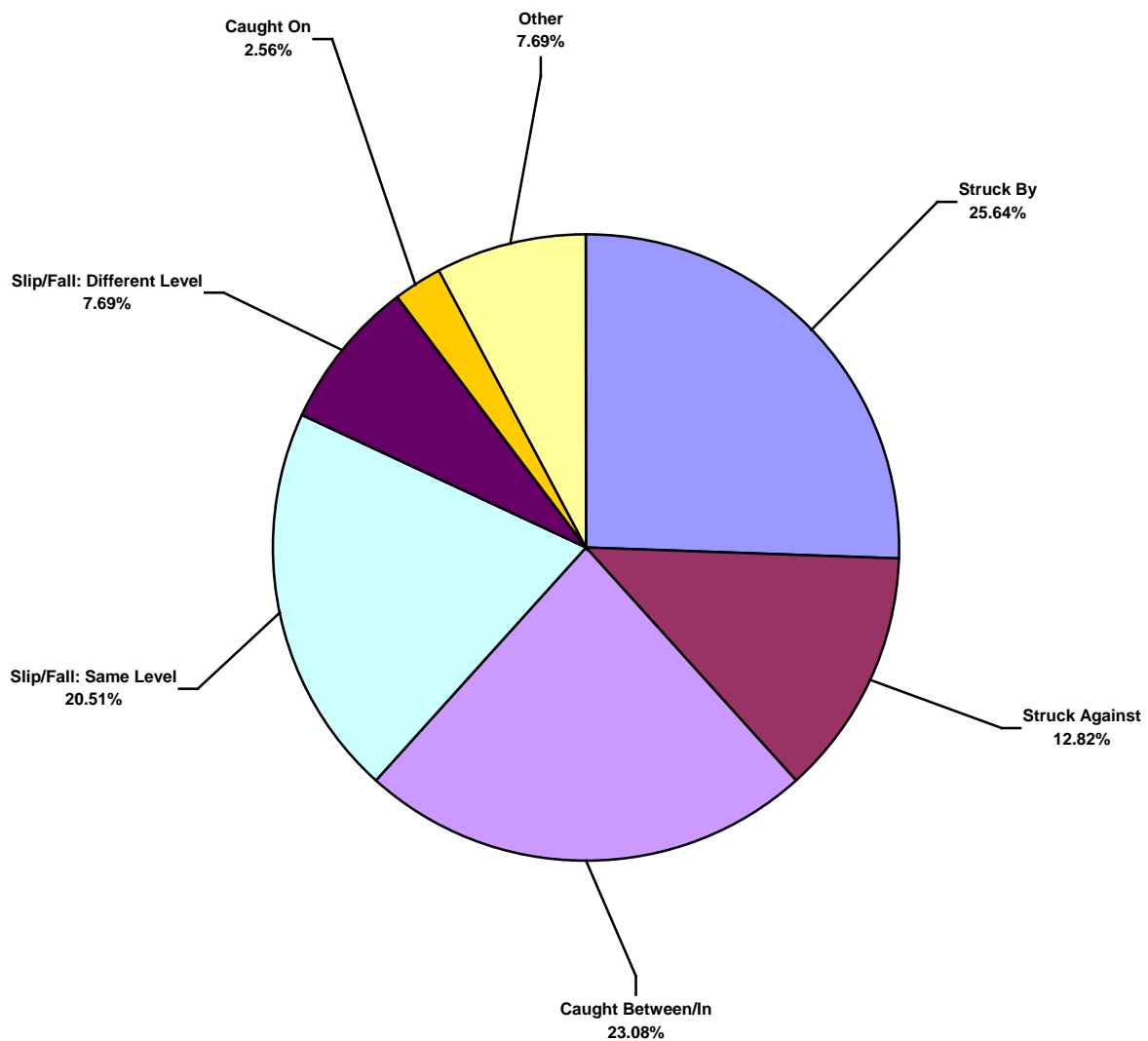
European Water Total Lost Time Incidents by Body Part (Chart 5)
Based on 39 Incidents



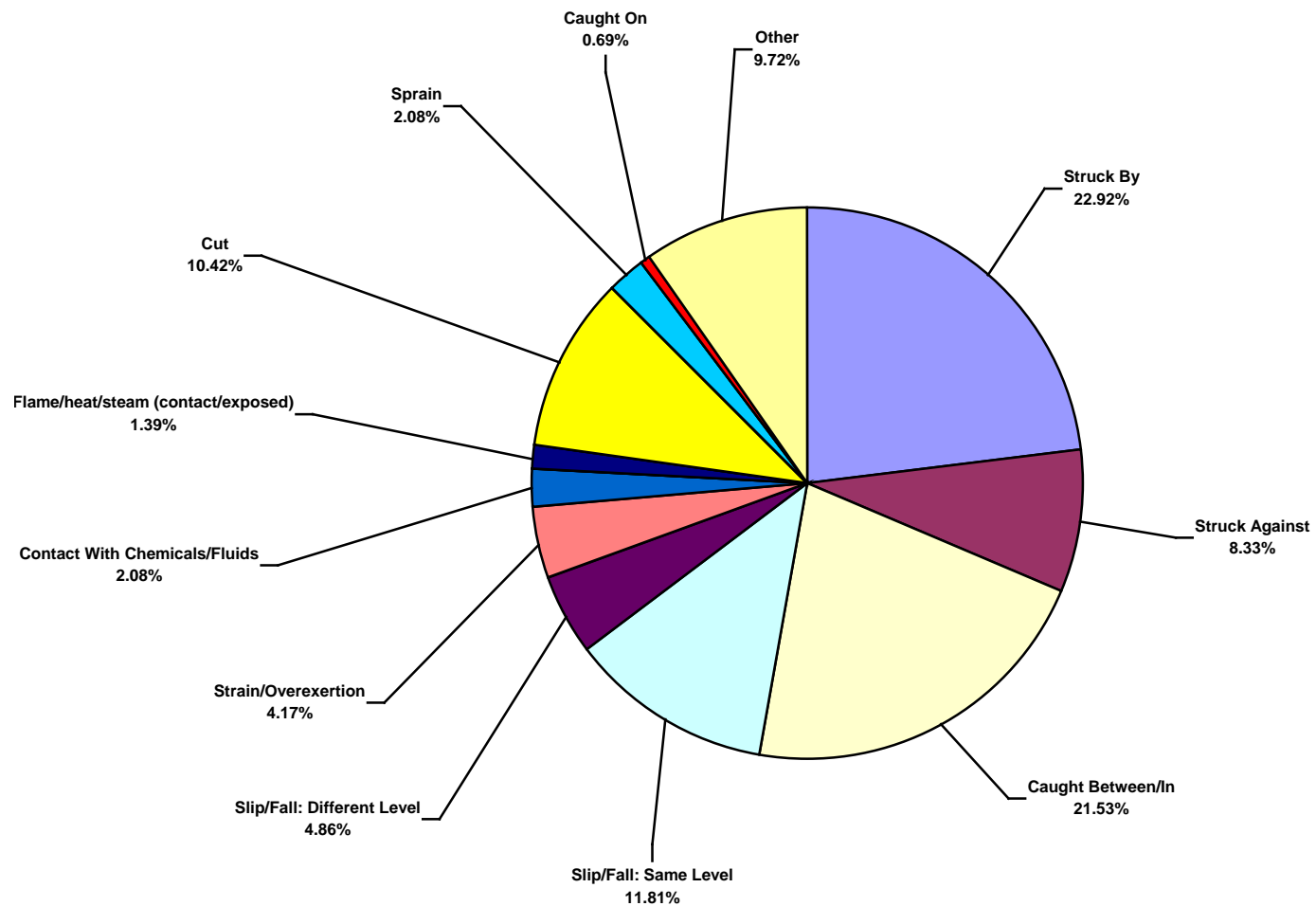
European Water Total Recordable Incidents by Body Part (Chart 6)
Based on 144 Incidents



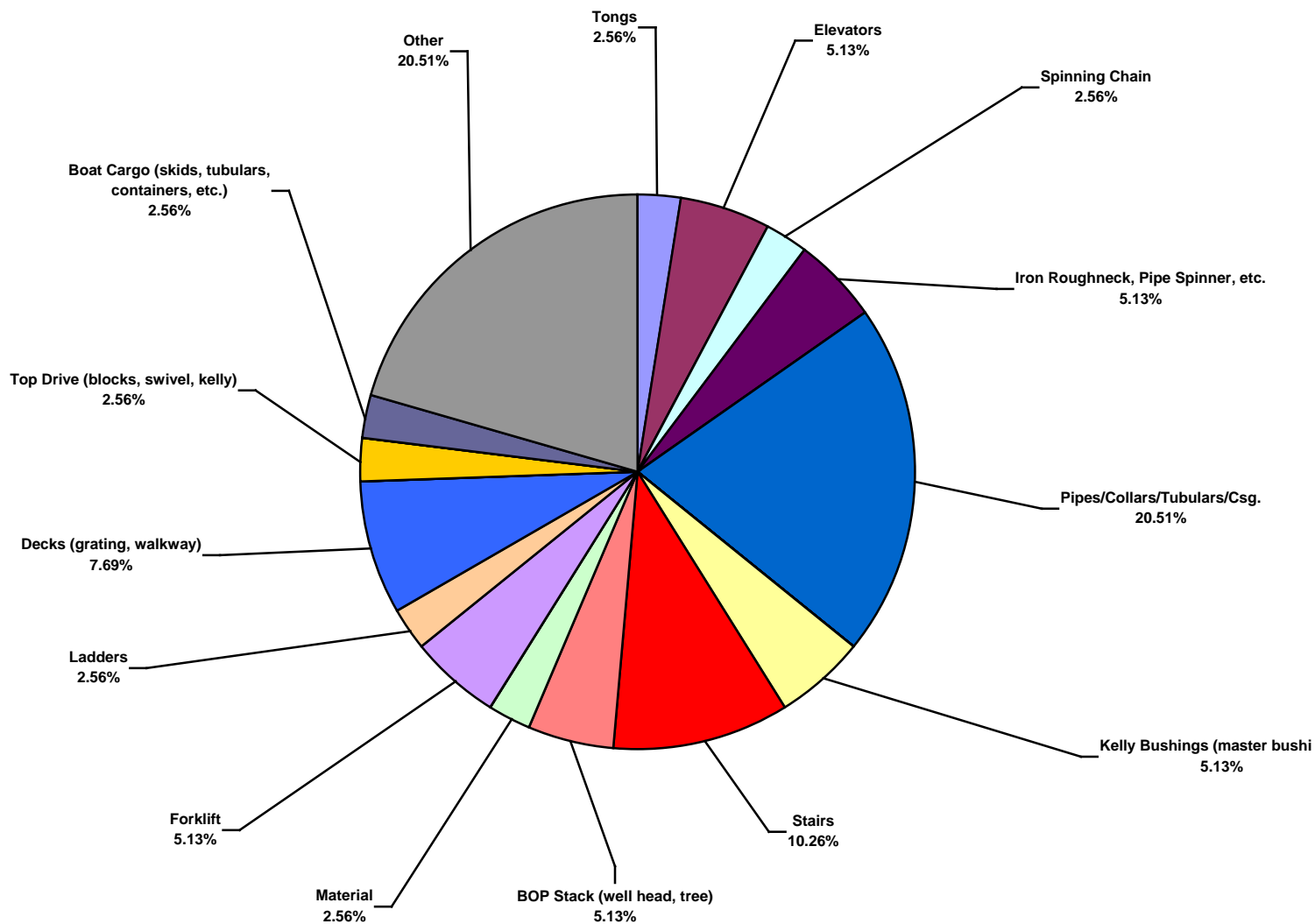
European Water Total Lost Time Incidents by Incident Type (Chart 7)
Based on 39 Incidents



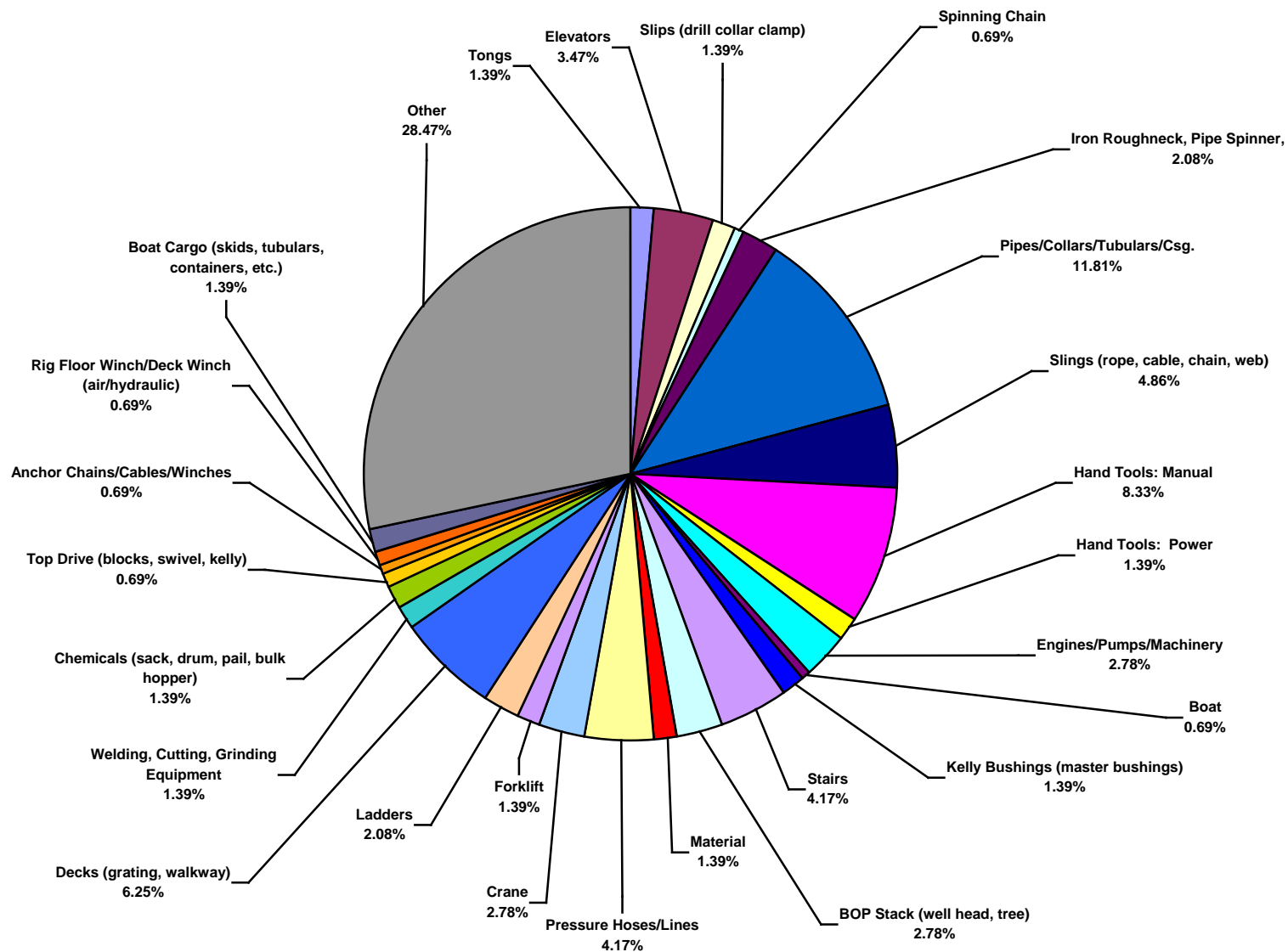
European Water Total Recordable Incidents by Incident Type (Chart 8)
Based on 144 Incidents



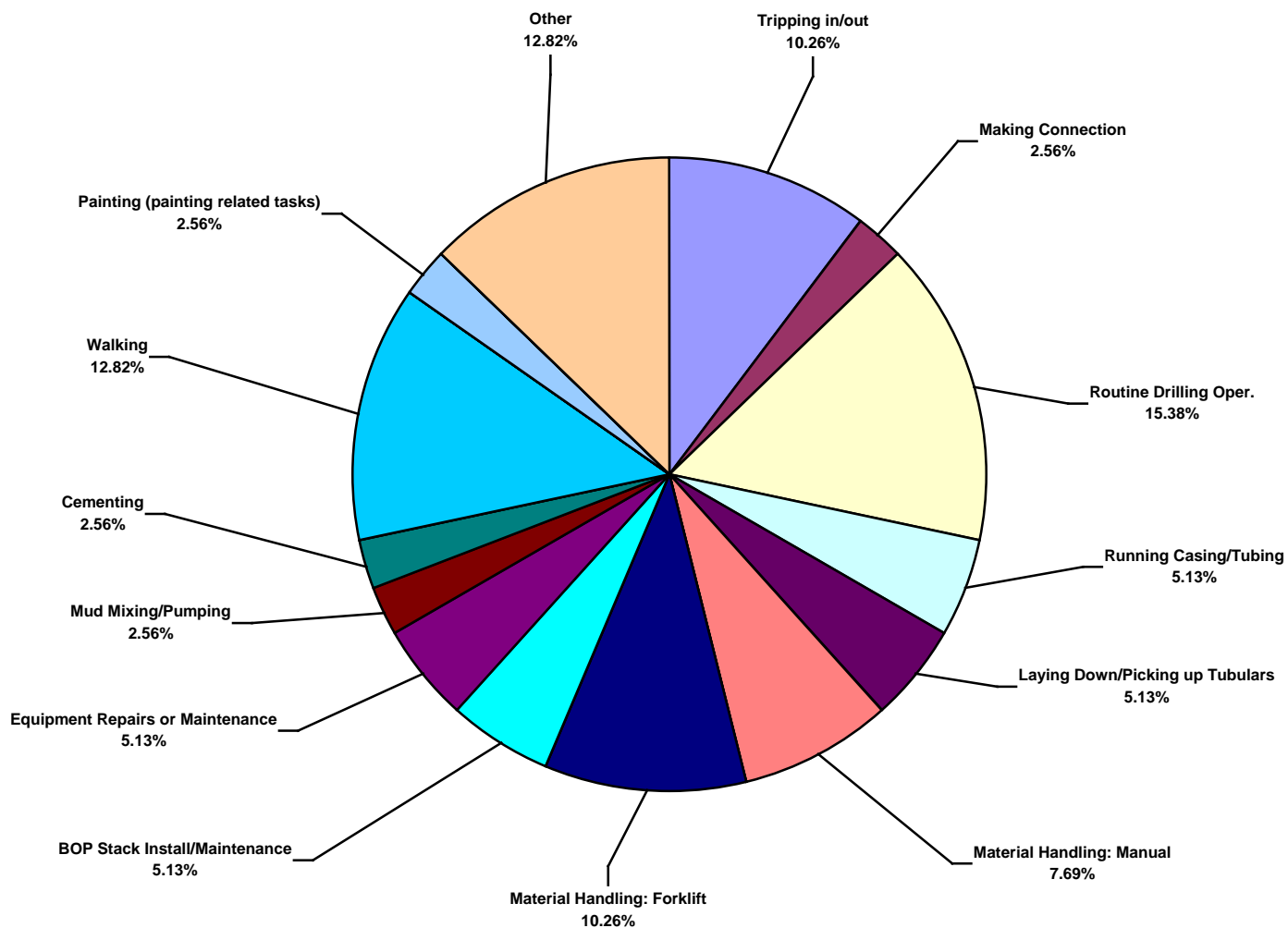
European Water Total Lost Time Incidents by Equipment (Chart 9)
Based on 39 Incidents



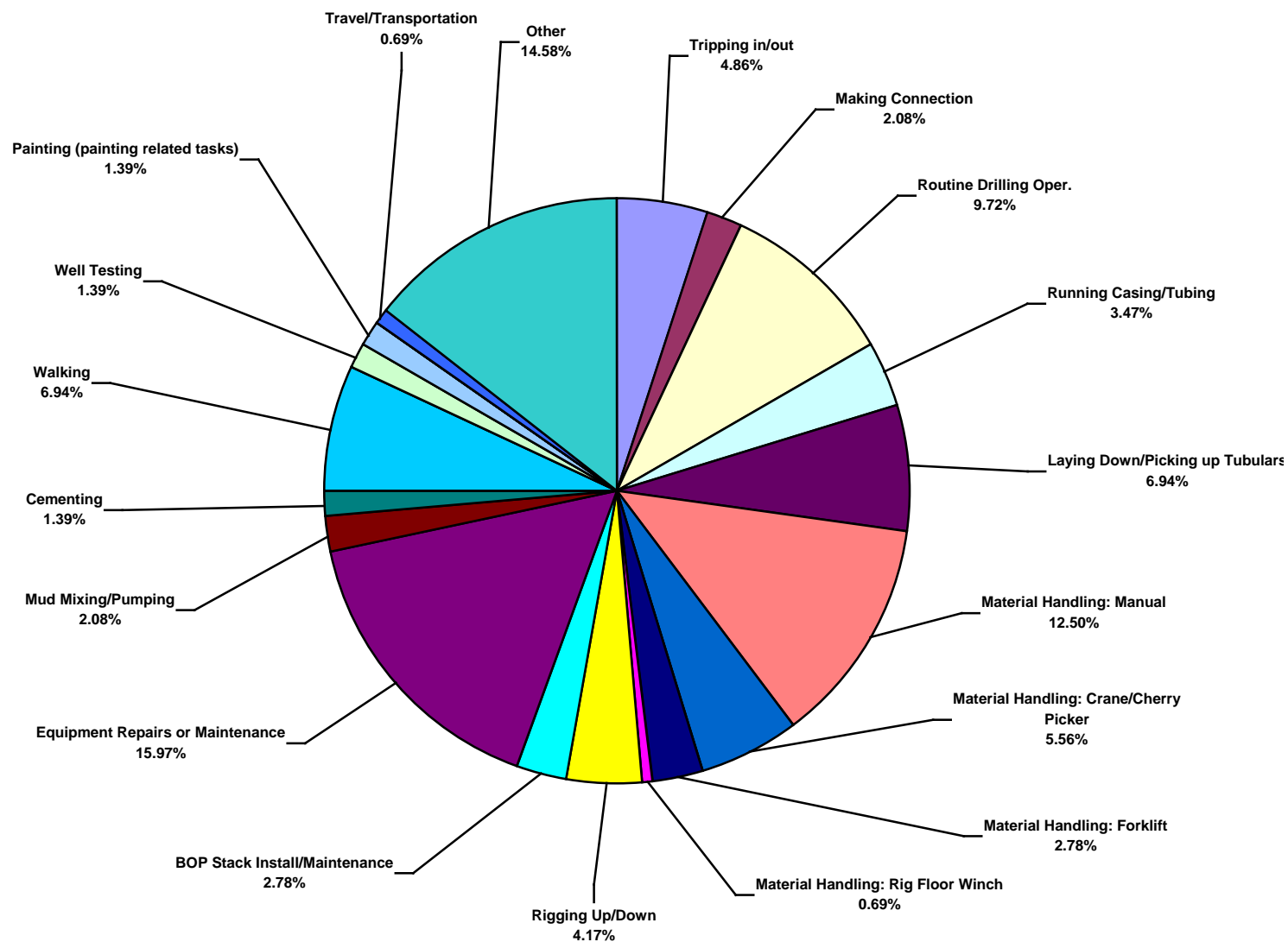
European Water Total Recordable Incidents by Equipment (Chart 10)
Based on 144 Incidents



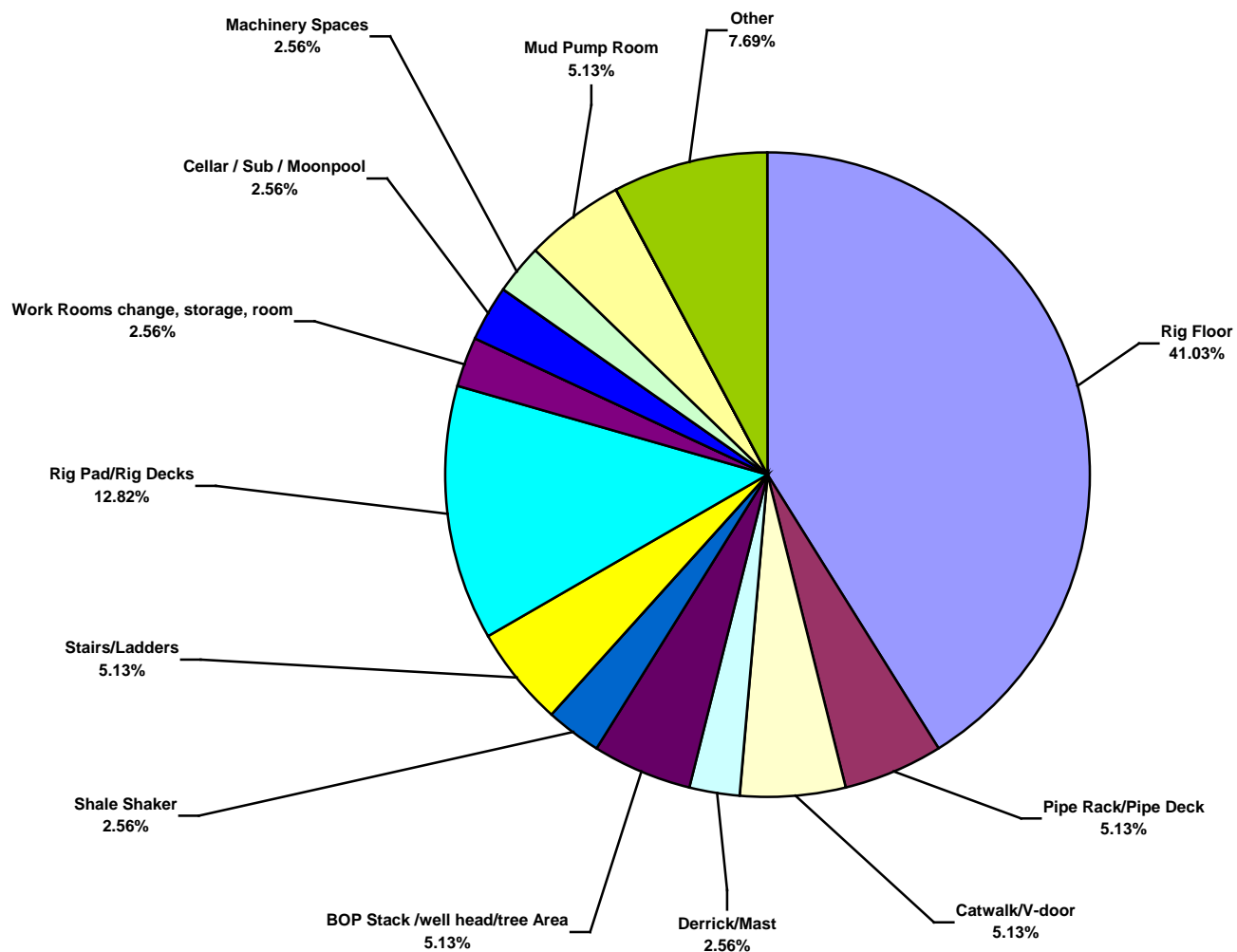
European Water Total Lost Time Incidents by Operation (Chart 11)
Based on 39 Incidents



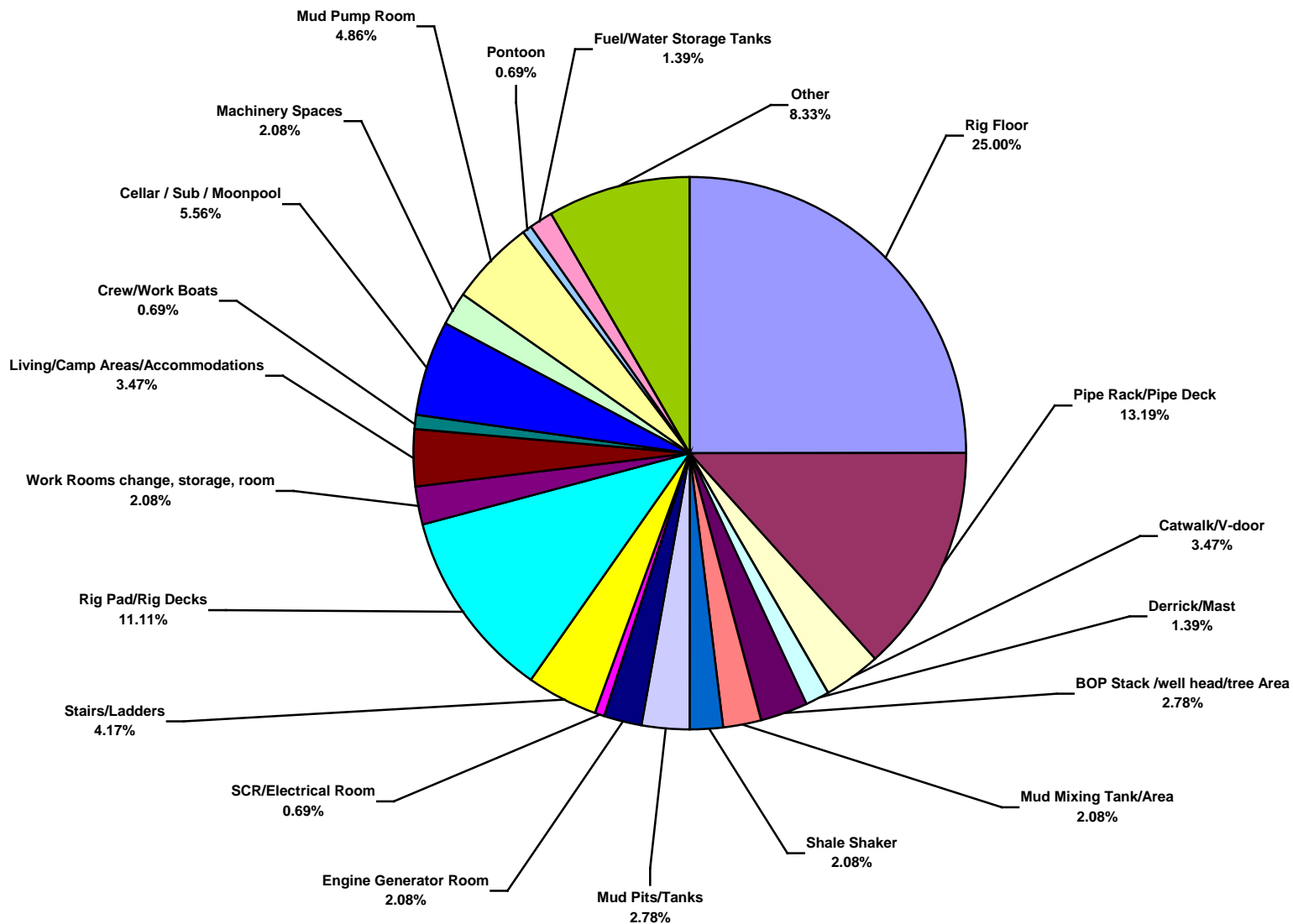
European Water Total Recordable Incidents by Operation (Chart 12)
Based on 144 Incidents



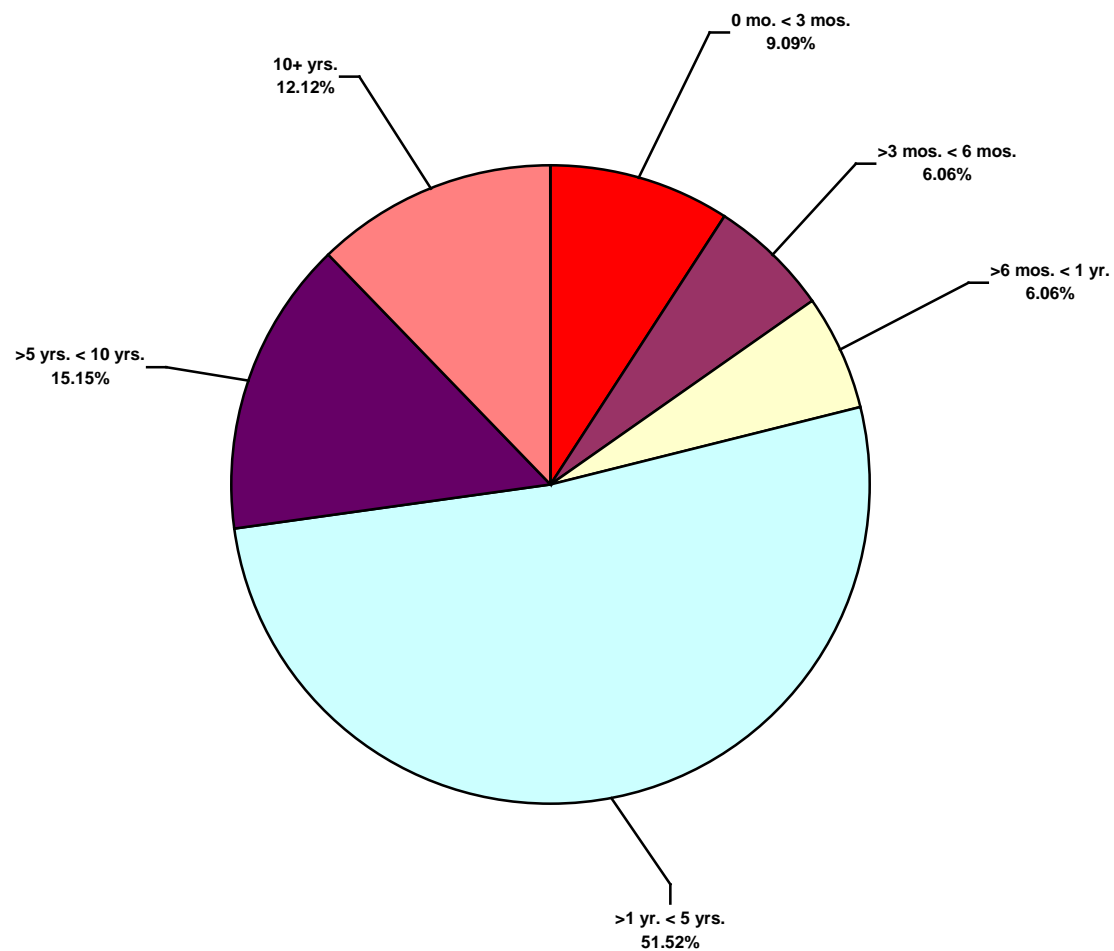
European Water Total Lost Time Incidents by Location (Chart 13)
Based on 39 Incidents



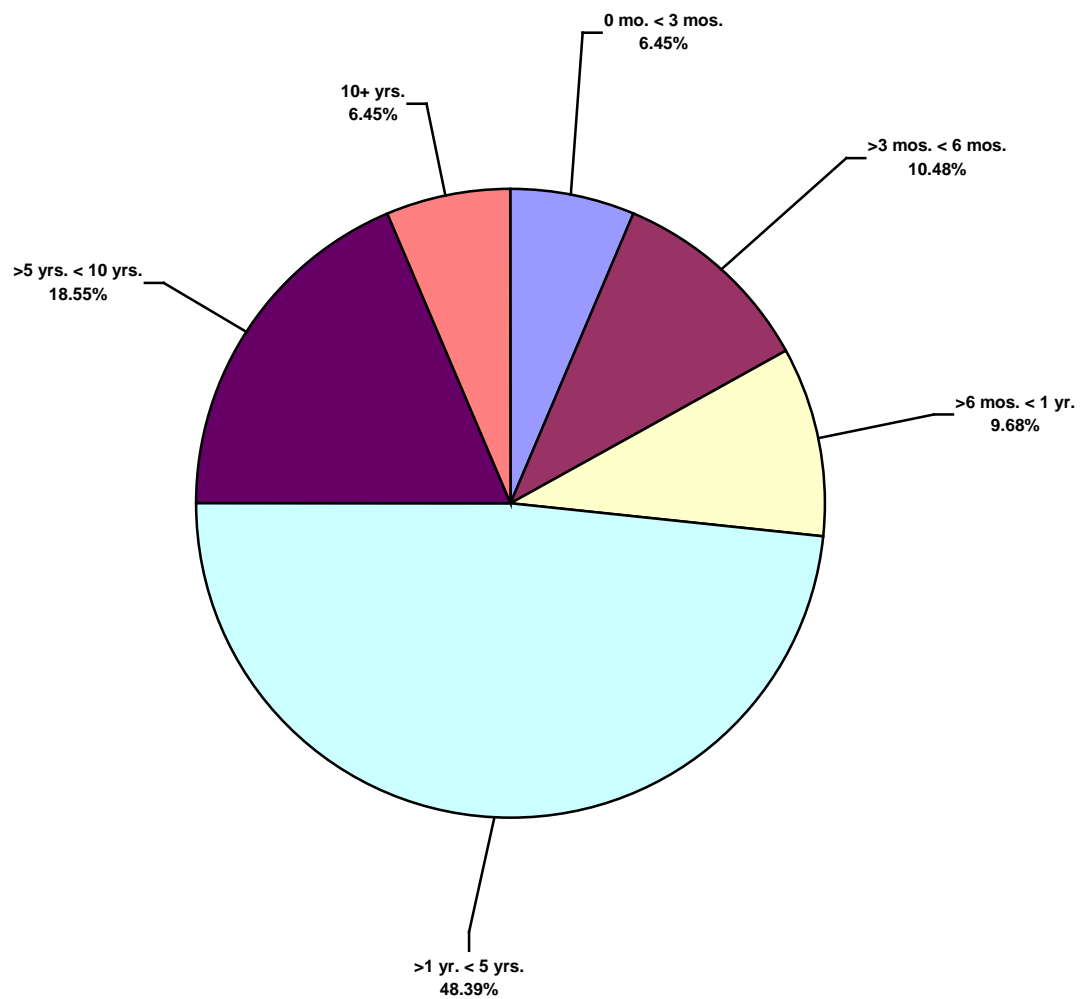
European Water Total Recordable Incidents by Location (Chart 14)
Based on 144 Incidents



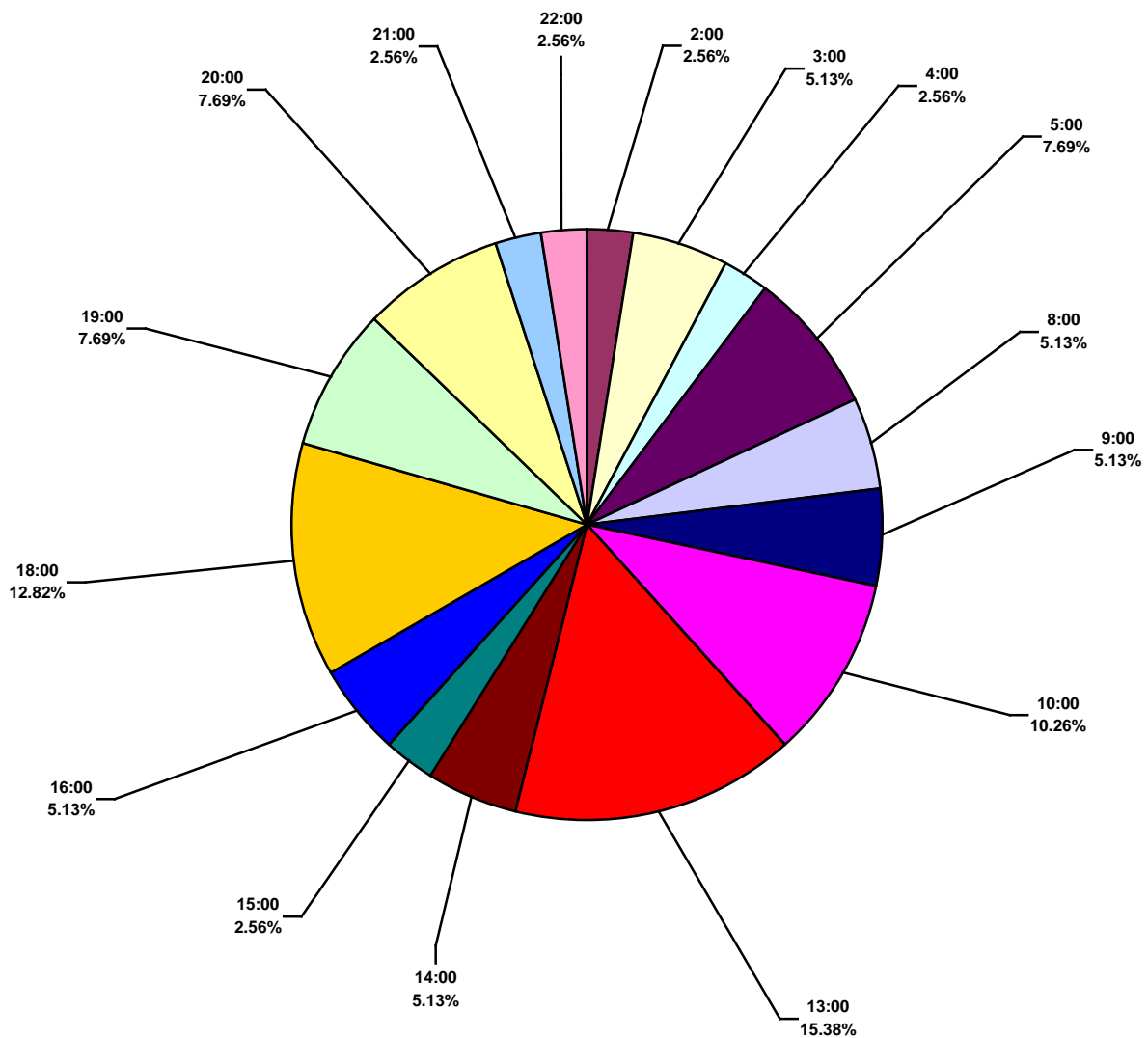
European Water Total Lost Time Incidents by Time in Service (Chart 15)
Based on 33 Incidents



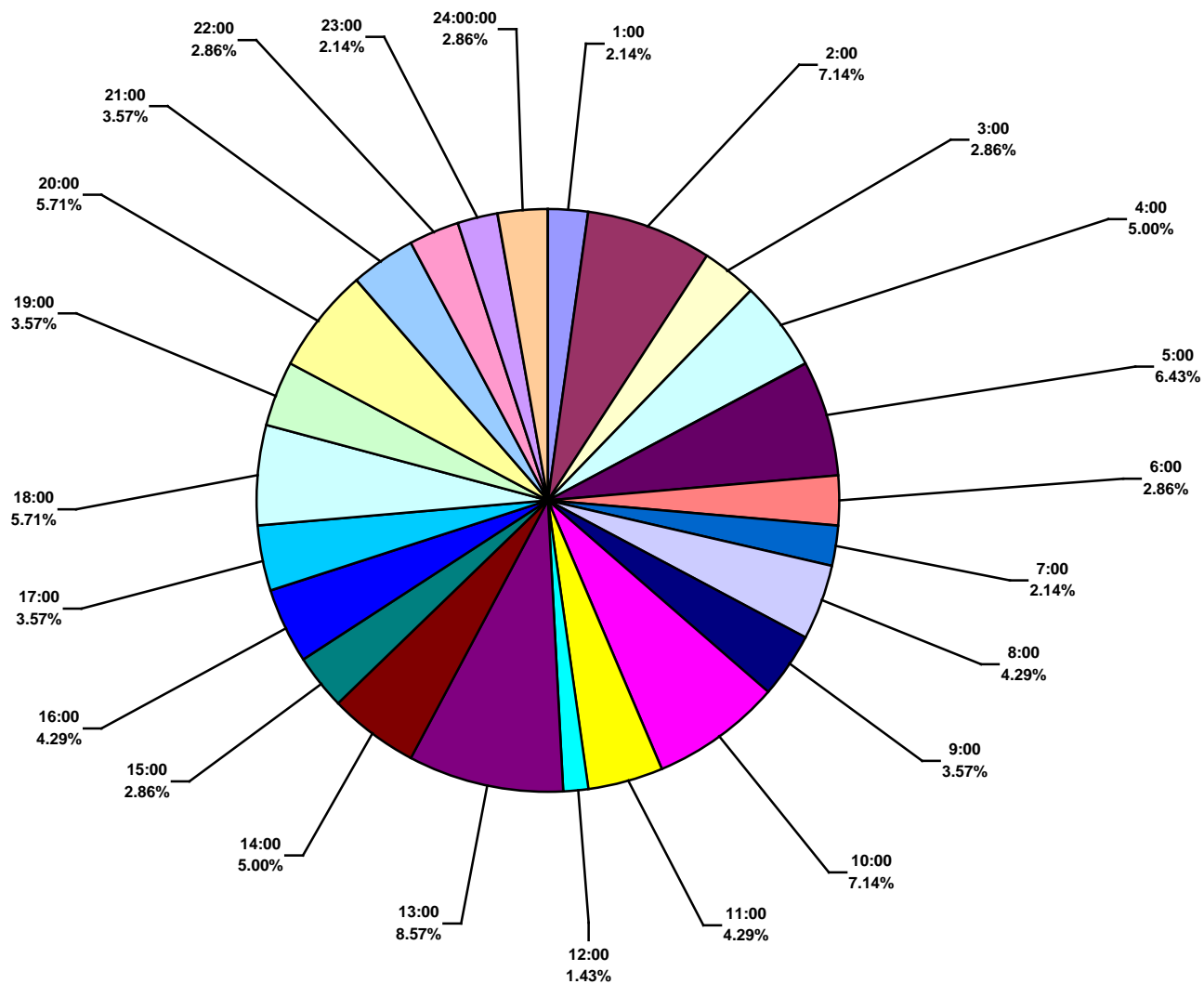
European Water Total Recordable Incidents by Time in Service (Chart 16)
Based on 126 Incidents



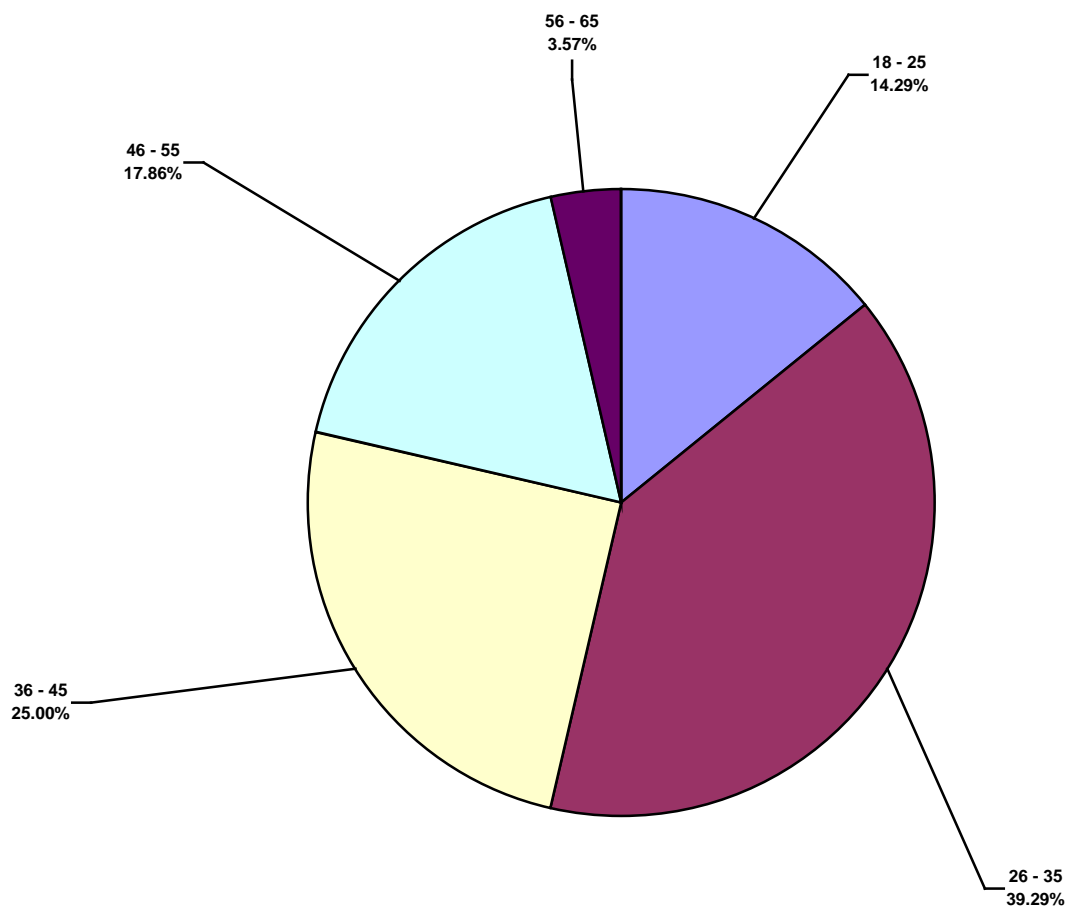
European Water Total Lost Time Incidents by Time of Day (Chart 17)
Based on 39 Incidents



European Water Total Recordable Incidents by Time of Day (Chart 18)
Based on 140 Incidents



European Water Total Lost Time Incidents by Age (Chart 19)
Based on 28 Incidents



European Water Total Recordable Incidents by Age (Chart 20)
Based on 93 Incidents

