



IADC
IADC
ISP PROGRAM

2013



**Summary of Occupational
Incidents**
(Asia Pacific Land Totals)

Issued 20 May 2014

Table of Contents

(Table of Contents is Hyperlinked, Just click on Topic & go)

IADC 2013 ASIA PACIFIC LAND TOTALS (TABLE 1)	1
<i>Asia Pacific Land Total Incidence Rates vs Man-hours (Figure 1)</i>	1
IADC 2013 ASIA PACIFIC LAND CHARTS	2
<i>Asia Pacific Land Total Lost Time Incidents by Month (Chart 1)</i>	2
<i>Asia Pacific Land Total Recordable Incidents by Month (Chart 2)</i>	3
<i>Asia Pacific Land Total Lost Time Incidents by Occupation (Chart 3)</i>	4
<i>Asia Pacific Land Total Recordable Incidents by Occupation (Chart 4)</i>	5
<i>Asia Pacific Land Total Lost Time Incidents by Body Part (Chart 5)</i>	6
<i>Asia Pacific Land Total Recordable Incidents by Body Part (Chart 6)</i>	7
<i>Asia Pacific Land Total Lost Time Incidents by Incident Type (Chart 7)</i>	8
<i>Asia Pacific Land Total Recordable Incidents by Incident Type (Chart 8)</i>	9
<i>Asia Pacific Land Total Lost Time Incidents by Equipment (Chart 9)</i>	10
<i>Asia Pacific Land Total Recordable Incidents by Equipment (Chart 10)</i>	11
<i>Asia Pacific Land Total Lost Time Incidents by Operation (Chart 11)</i>	12
<i>Asia Pacific Land Total Recordable Incidents by Operation (Chart 12)</i>	13
<i>Asia Pacific Land Total Lost Time Incidents by Location (Chart 13)</i>	14
<i>Asia Pacific Land Total Recordable Incidents by Location (Chart 14)</i>	15
<i>Asia Pacific Land Total Lost Time Incidents by Time in Service (Chart 15)</i>	16
<i>Asia Pacific Land Total Recordable Incidents by Time in Service (Chart 16)</i>	17
<i>Asia Pacific Land Total Lost Time Incidents by Time of Day (Chart 17)</i>	18
<i>Asia Pacific Land Total Recordable Incidents by Time of Day (Chart 18)</i>	19

IADC 2013 Asia Pacific Land Totals (Table 1)

	<u>Total</u>
Total Man-hours	23,172,538
Total Medical Treatment Incidents	42
Total Restricted Work Incidents	42
Total Lost Time Incidents	22
Total Fatalities	3
Total Recordables	109
MTO Incidence Rate	0.36
RWC Incidence Rate	0.36
LTI Incidence Rate	0.22
LTI Frequency Rate	1.08
DART Incidence Rate	0.58
DART Frequency Rate	2.89
Recordable Incidence Rate	0.94
Recordable Frequency Rate	4.70

Companies Reporting: Land – 16

Medical Treatment Incidence Rate = MTOs X 200,000

Restricted Work Incidence Rate = RWCs X 200,000

Lost Time Incidence Rate = LTIs + FTLs X 200,000

DART Incidence Rate = LTIs + RWC X 200,000

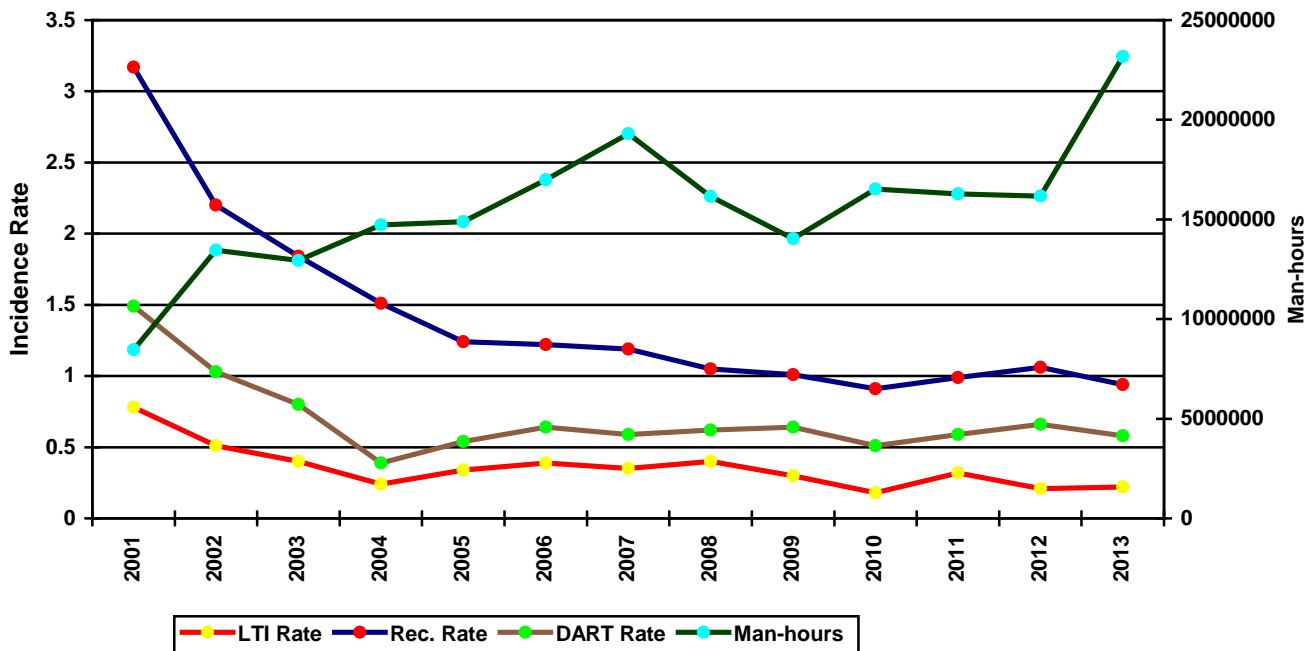
Recordable Incidence Rate = RCRD X 200,000

Lost Time Frequency Rate = LTIs +FTLs X 1,000,000

DART Frequency Rate = LTIs + RWC X 1,000,000

Recordable Frequency Rate = RCRD X 1,000,000

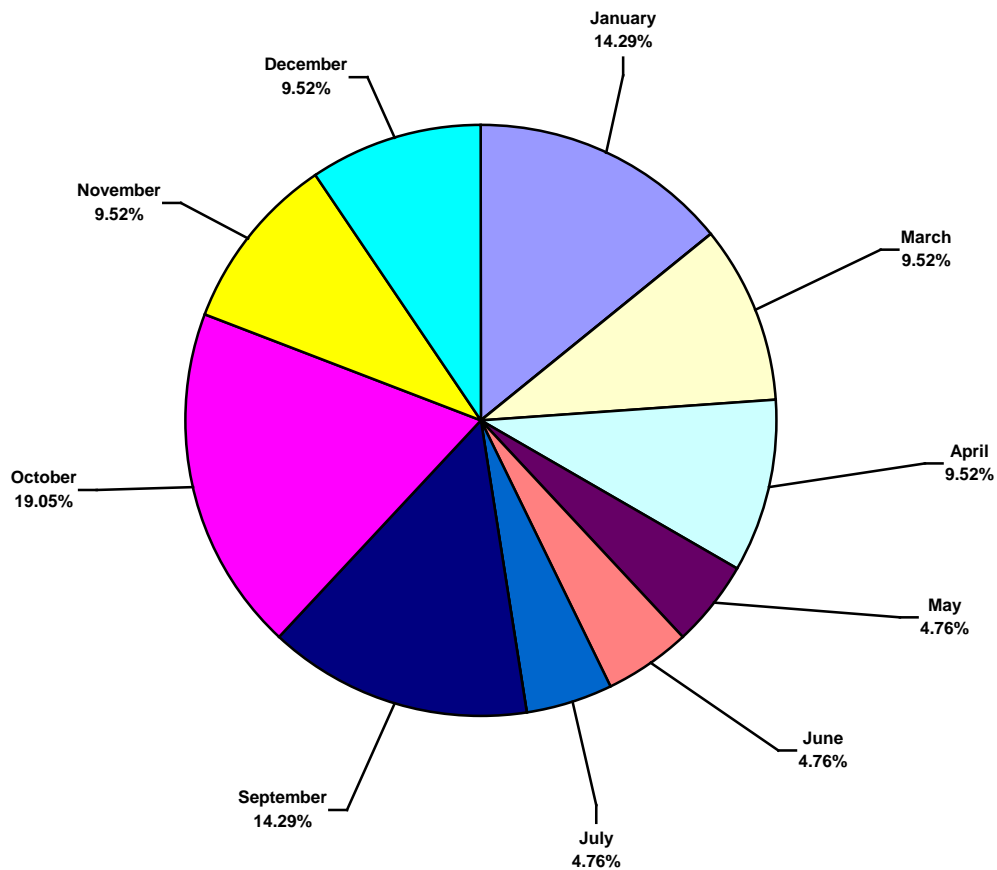
Asia Pacific Land Total Incidence Rates vs Man-hours (Figure 1)



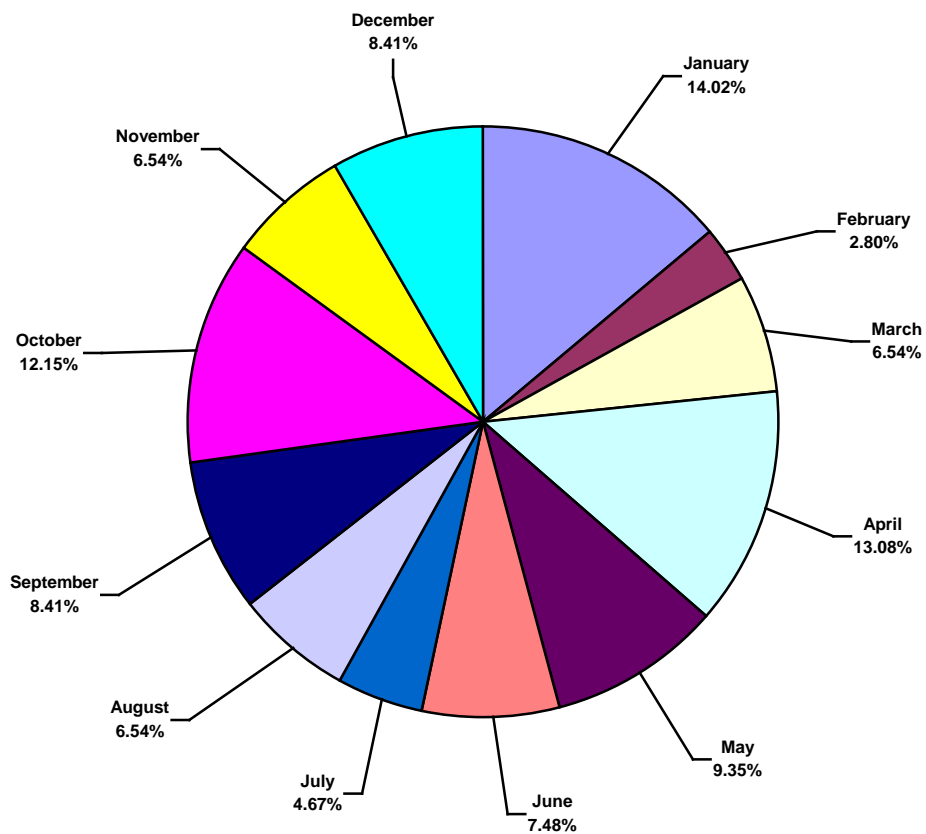
IADC 2013 Asia Pacific Land Charts

Asia Pacific Land Total Lost Time Incidents by Month (Chart 1)

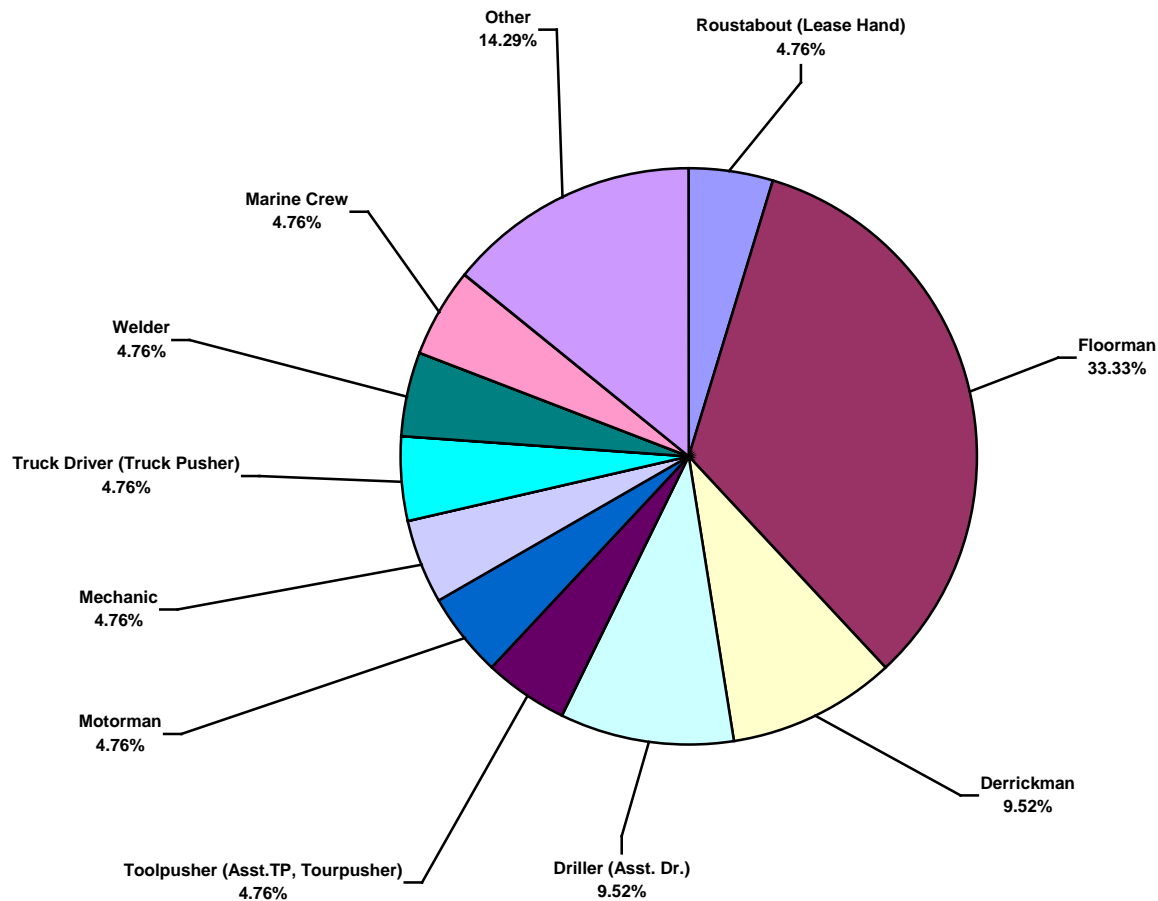
Based on 21 Incidents



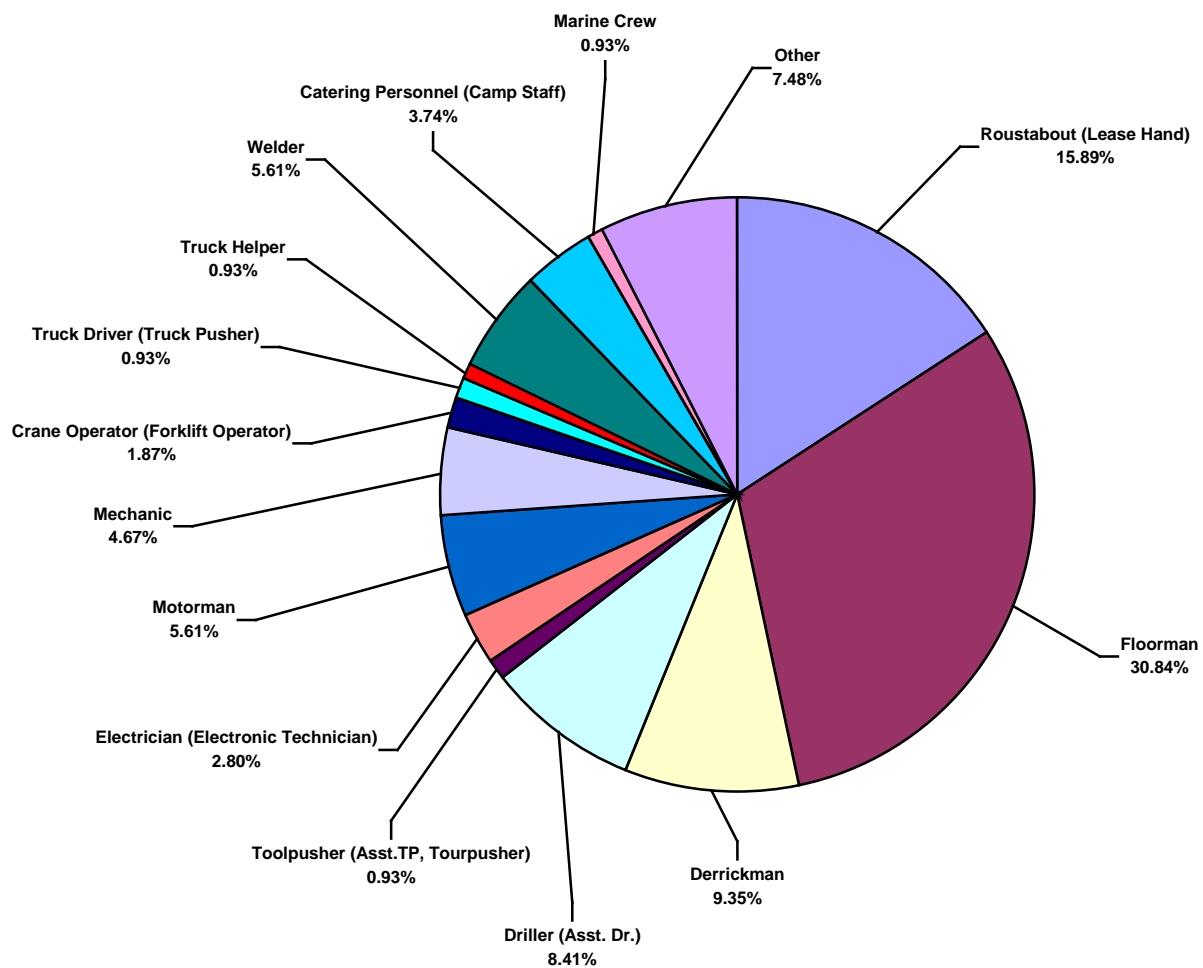
Asia Pacific Land Total Recordable Incidents by Month (Chart 2)
Based on 107 Incidents



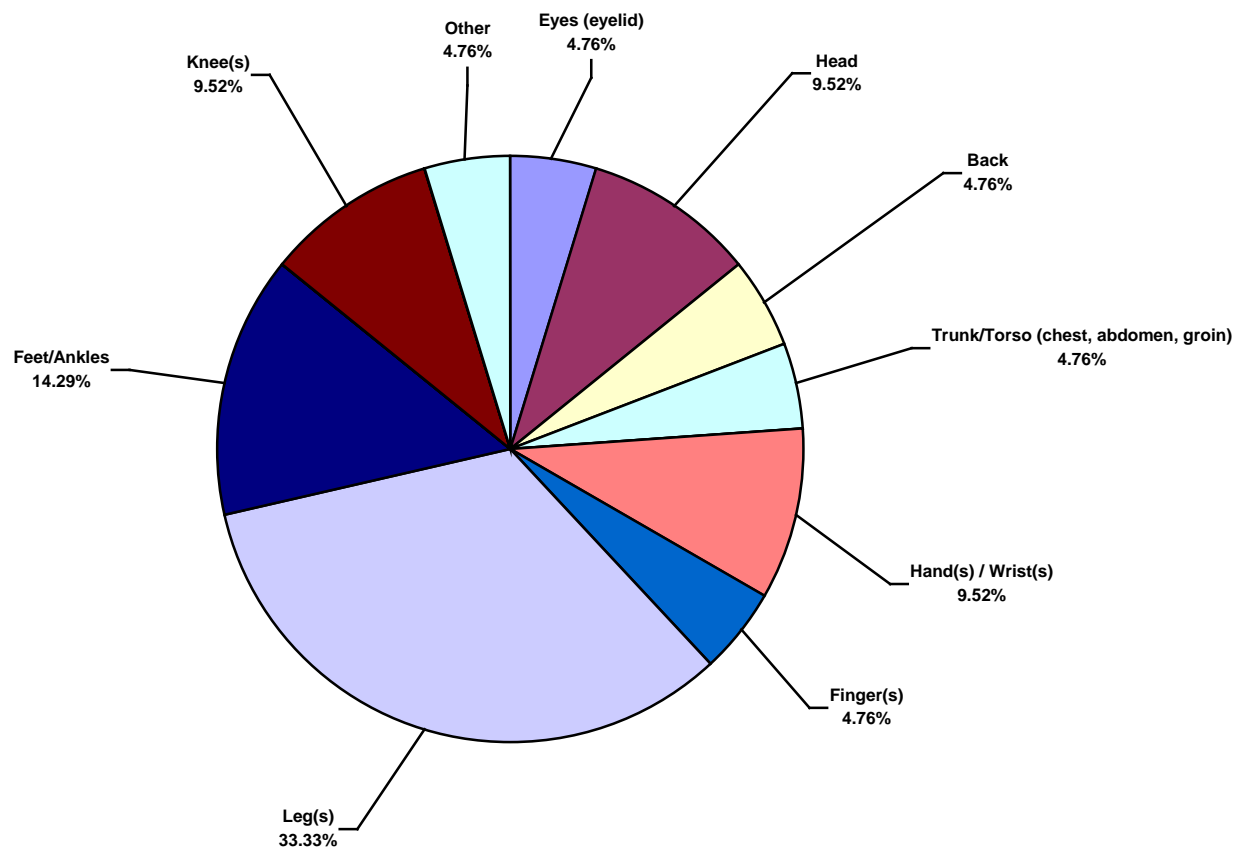
Asia Pacific Land Total Lost Time Incidents by Occupation (Chart 3)
Based on 21 Incidents



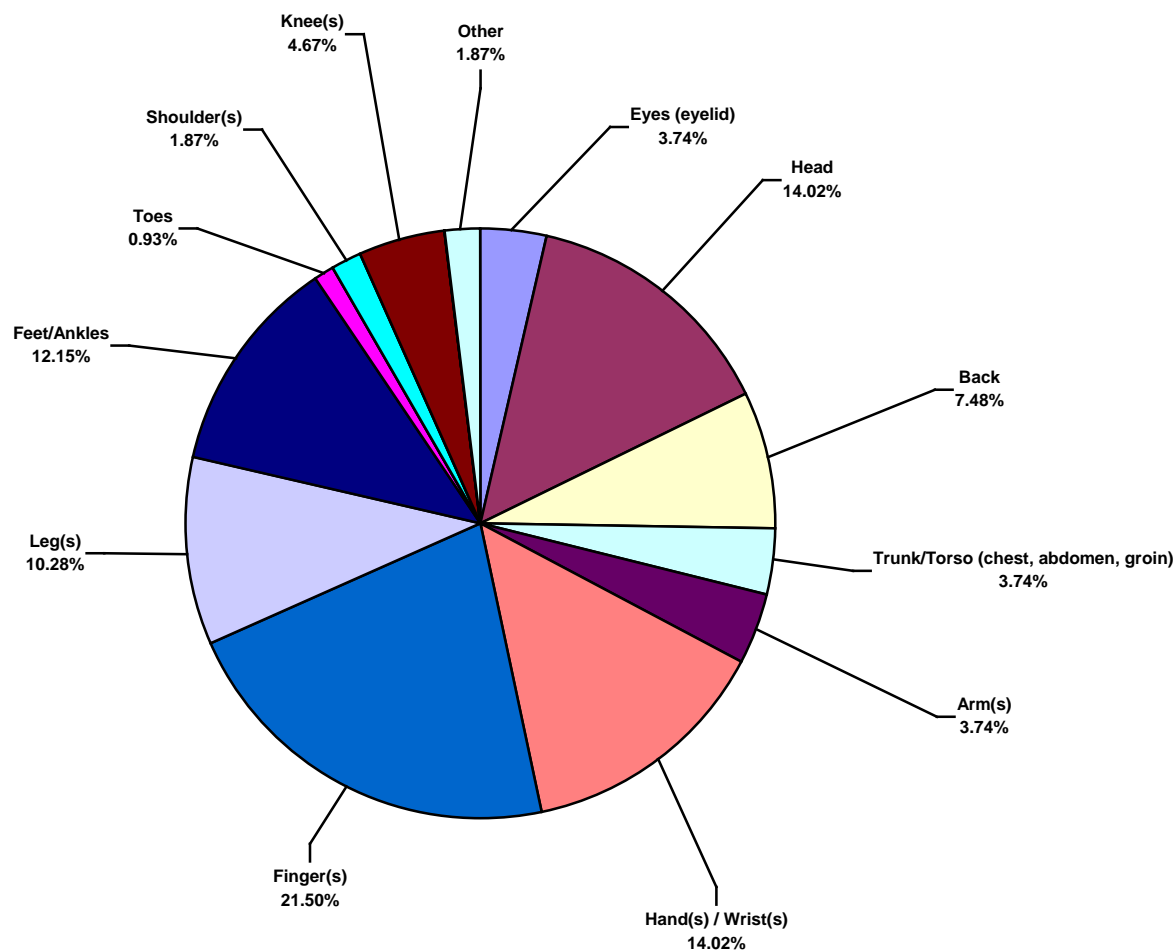
Asia Pacific Land Total Recordable Incidents by Occupation (Chart 4)
Based on 107 Incidents



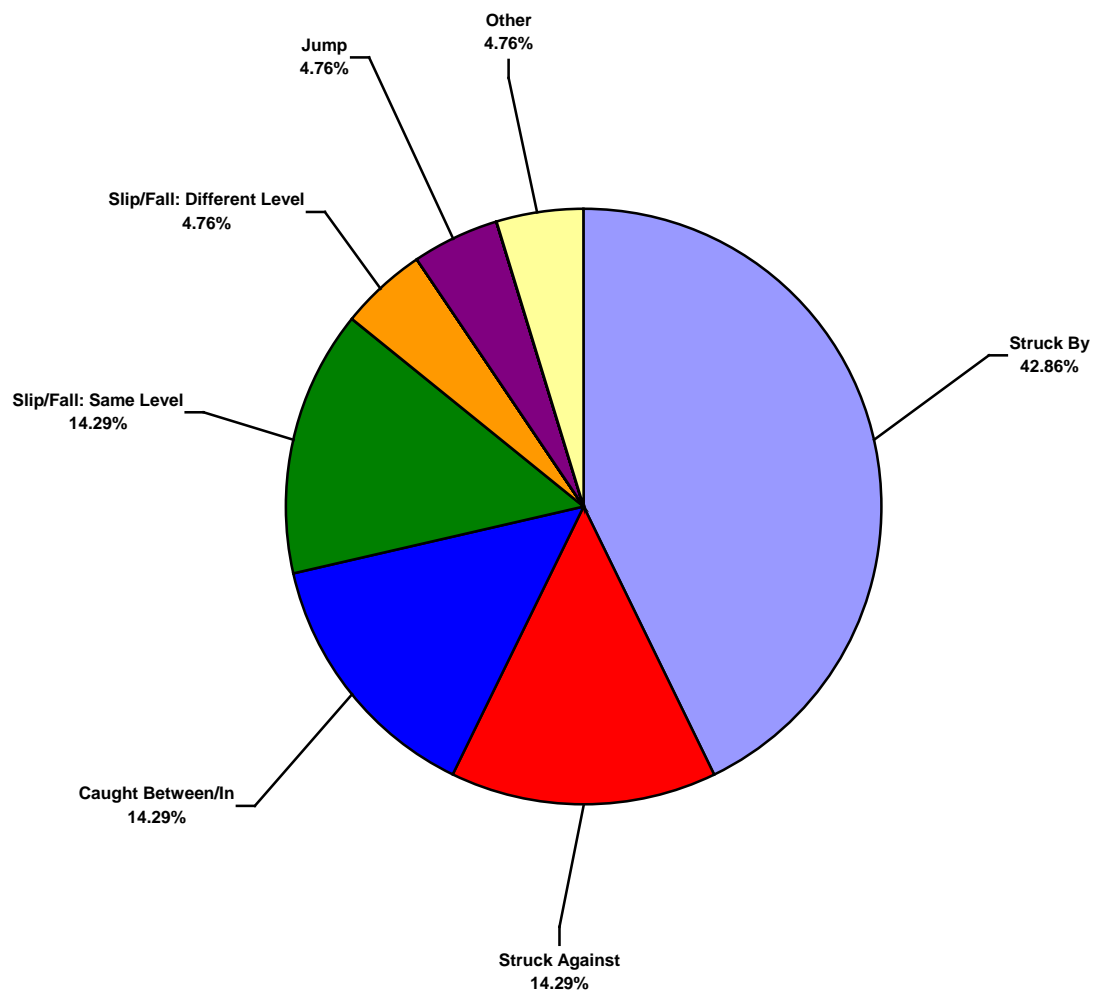
Asia Pacific Land Total Lost Time Incidents by Body Part (Chart 5)
Based on 21 Incidents



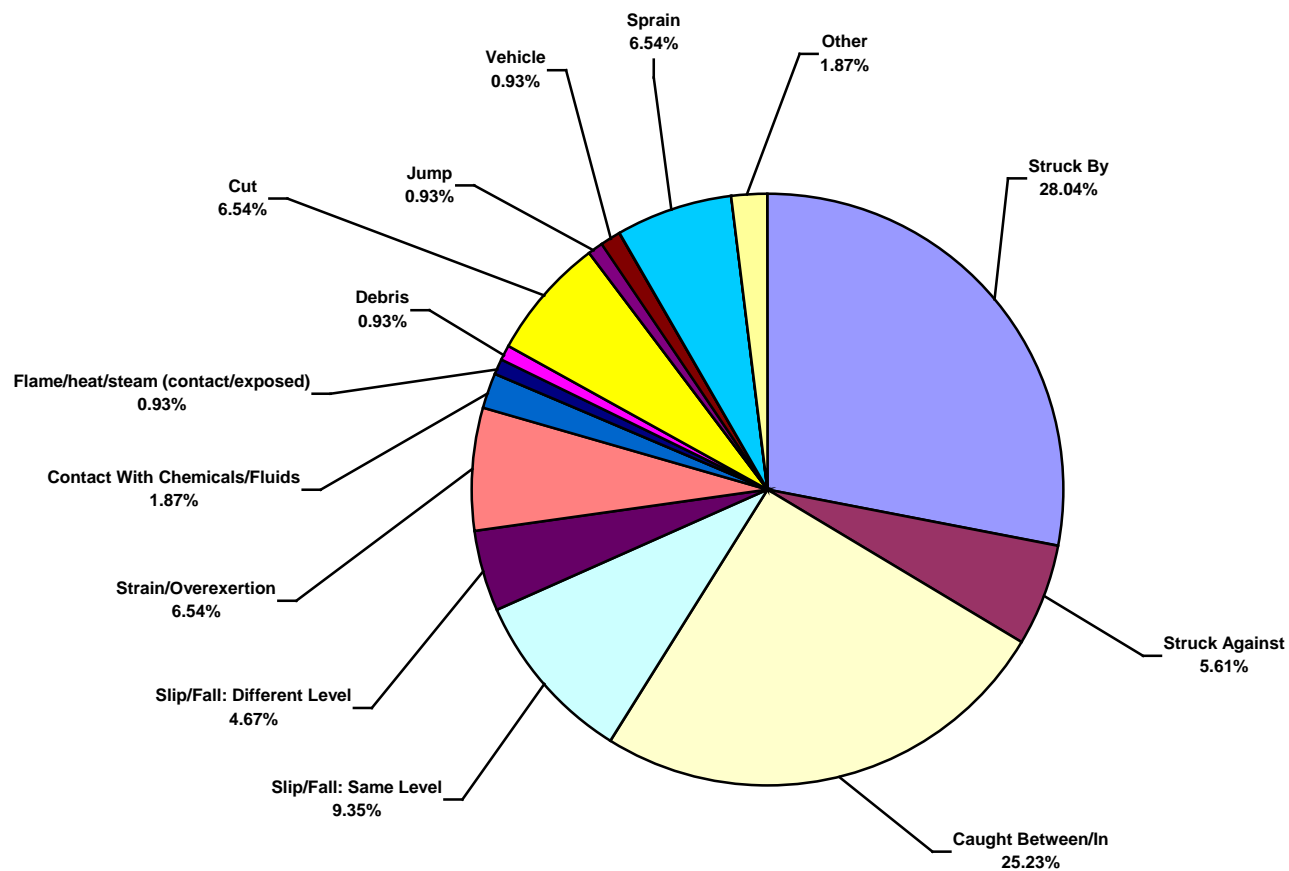
Asia Pacific Land Total Recordable Incidents by Body Part (Chart 6)
Based on 107 Incidents



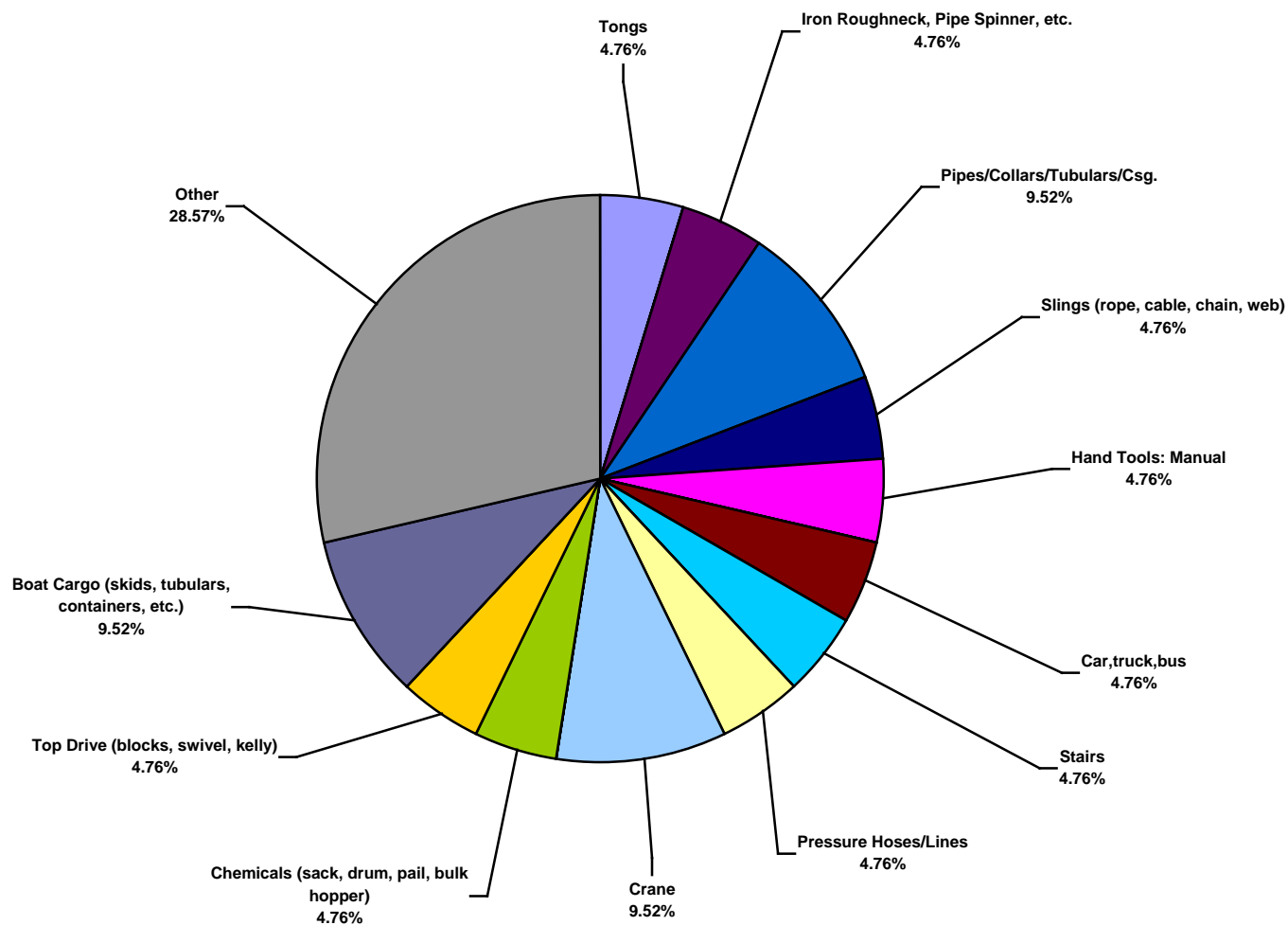
Asia Pacific Land Total Lost Time Incidents by Incident Type (Chart 7)
Based on 21 Incidents



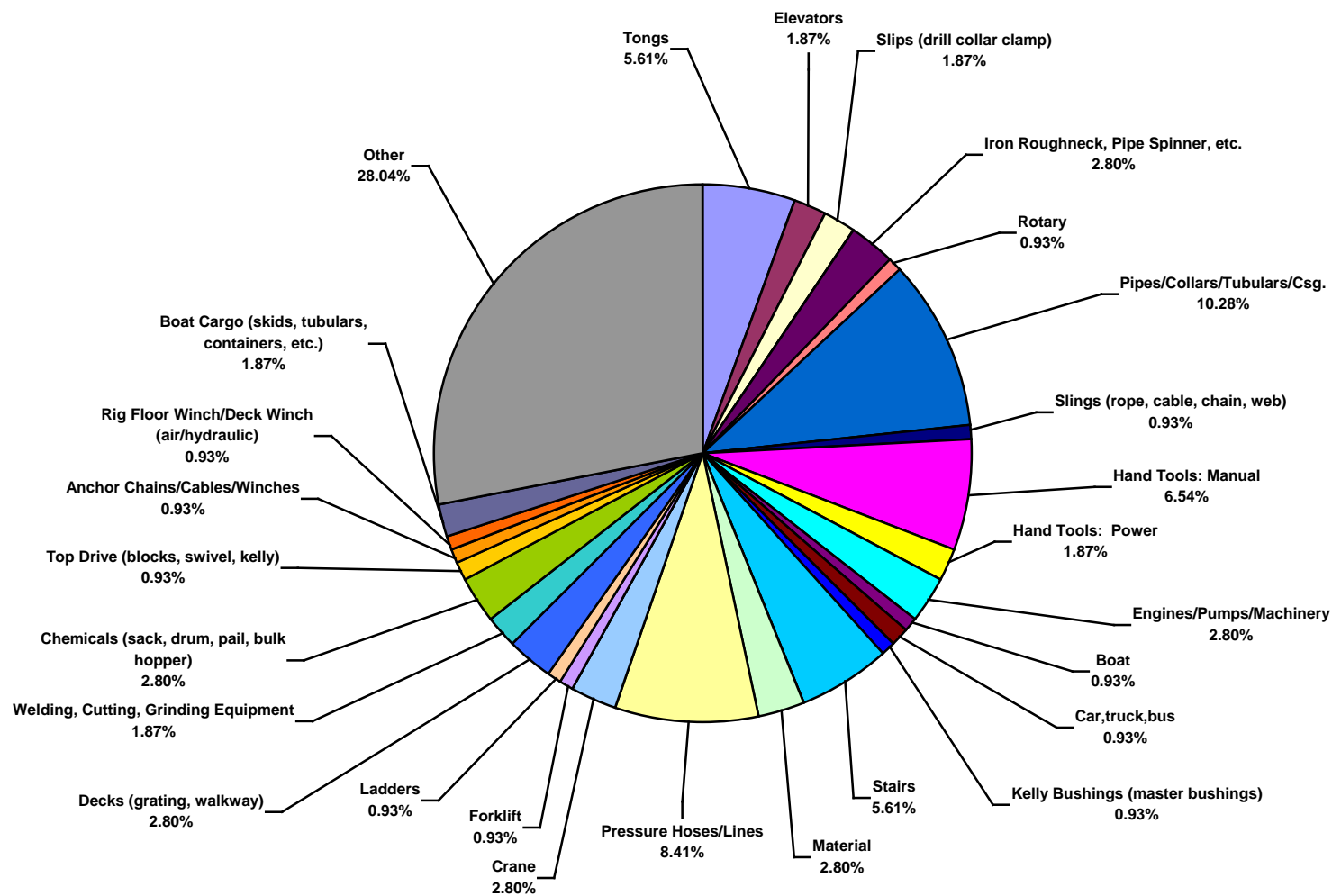
Asia Pacific Land Total Recordable Incidents by Incident Type (Chart 8)
Based on 107 Incidents



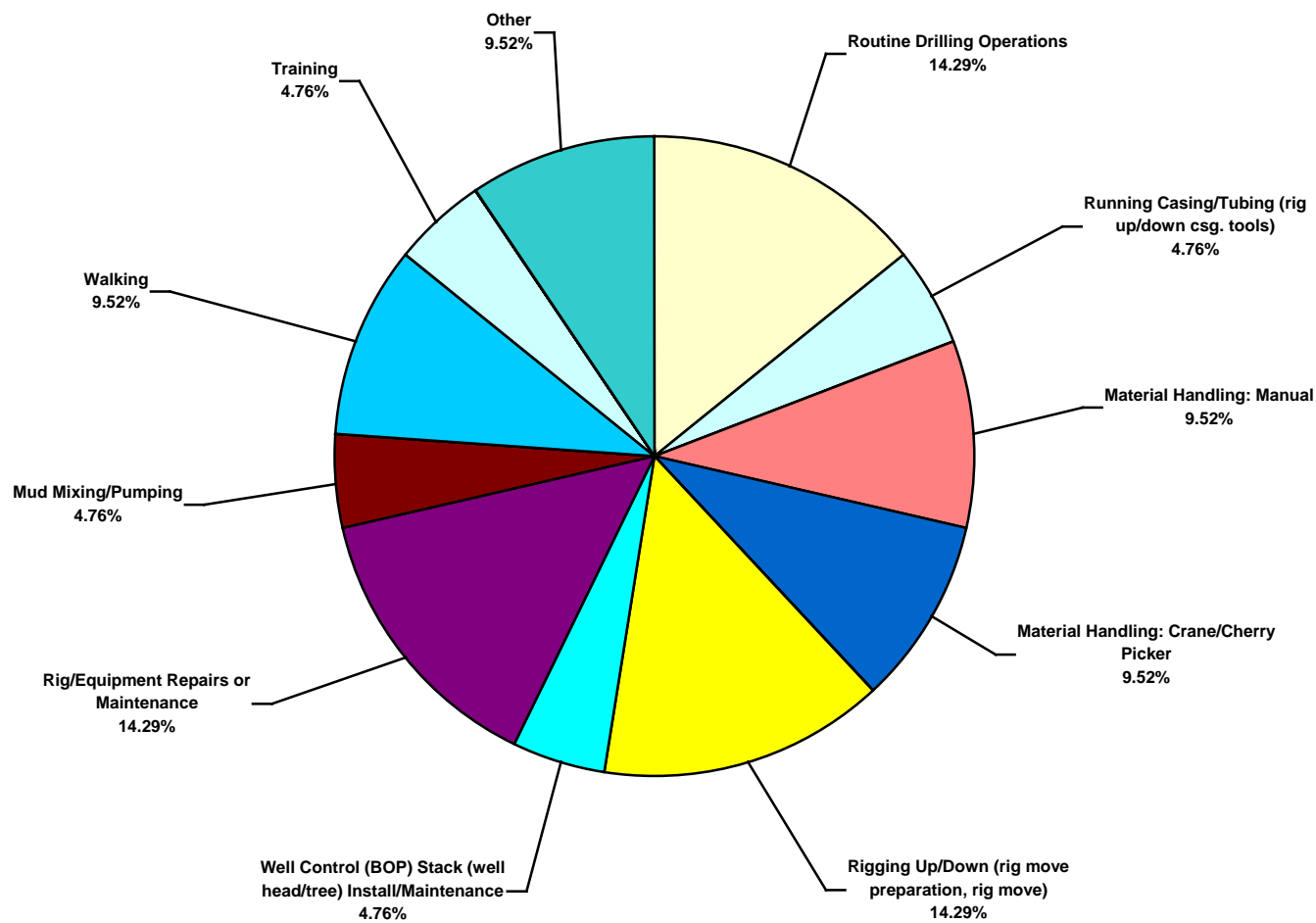
Asia Pacific Land Total Lost Time Incidents by Equipment (Chart 9)
Based on 21 Incidents



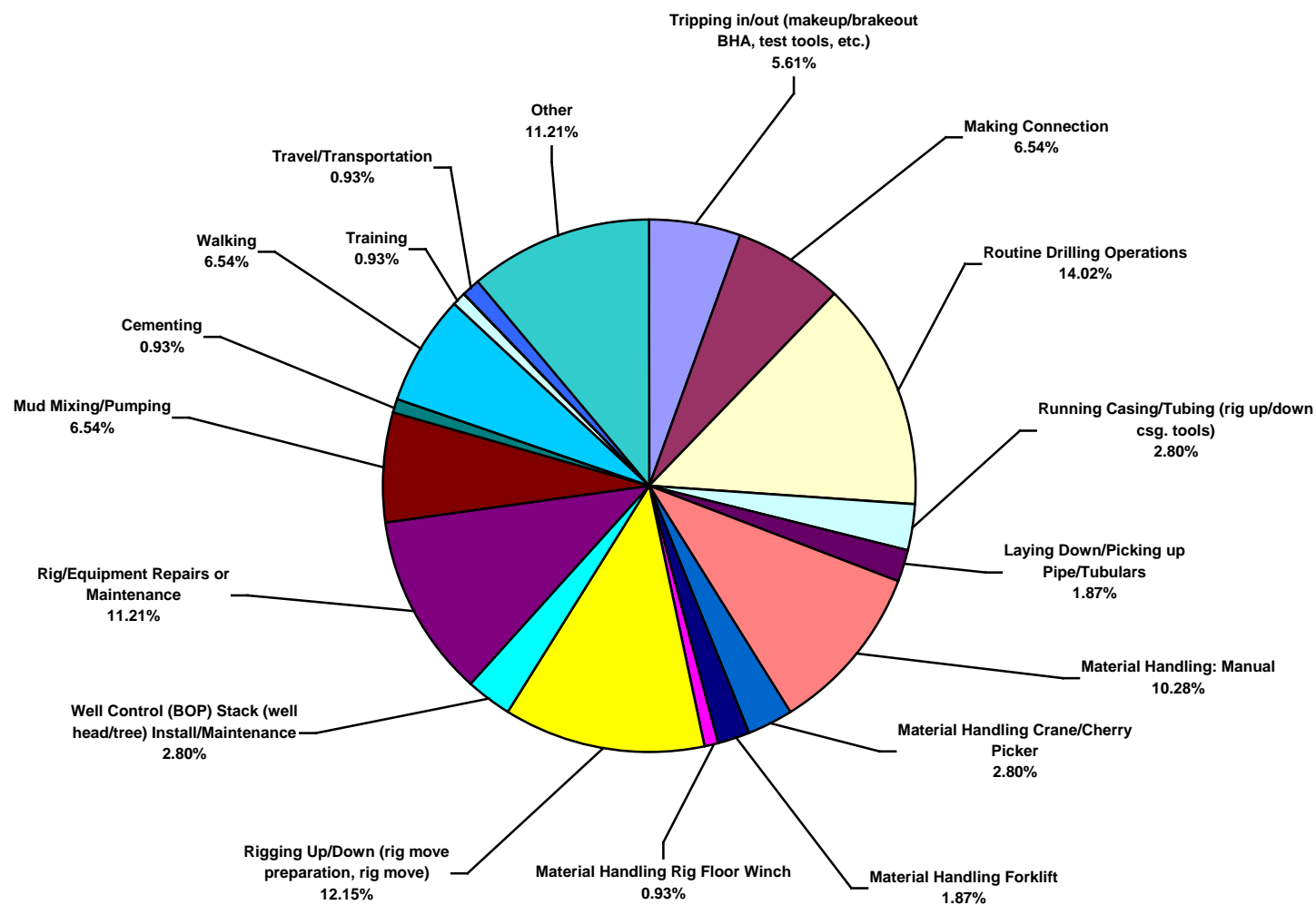
Asia Pacific Land Total Recordable Incidents by Equipment (Chart 10)
Based on 107 Incidents



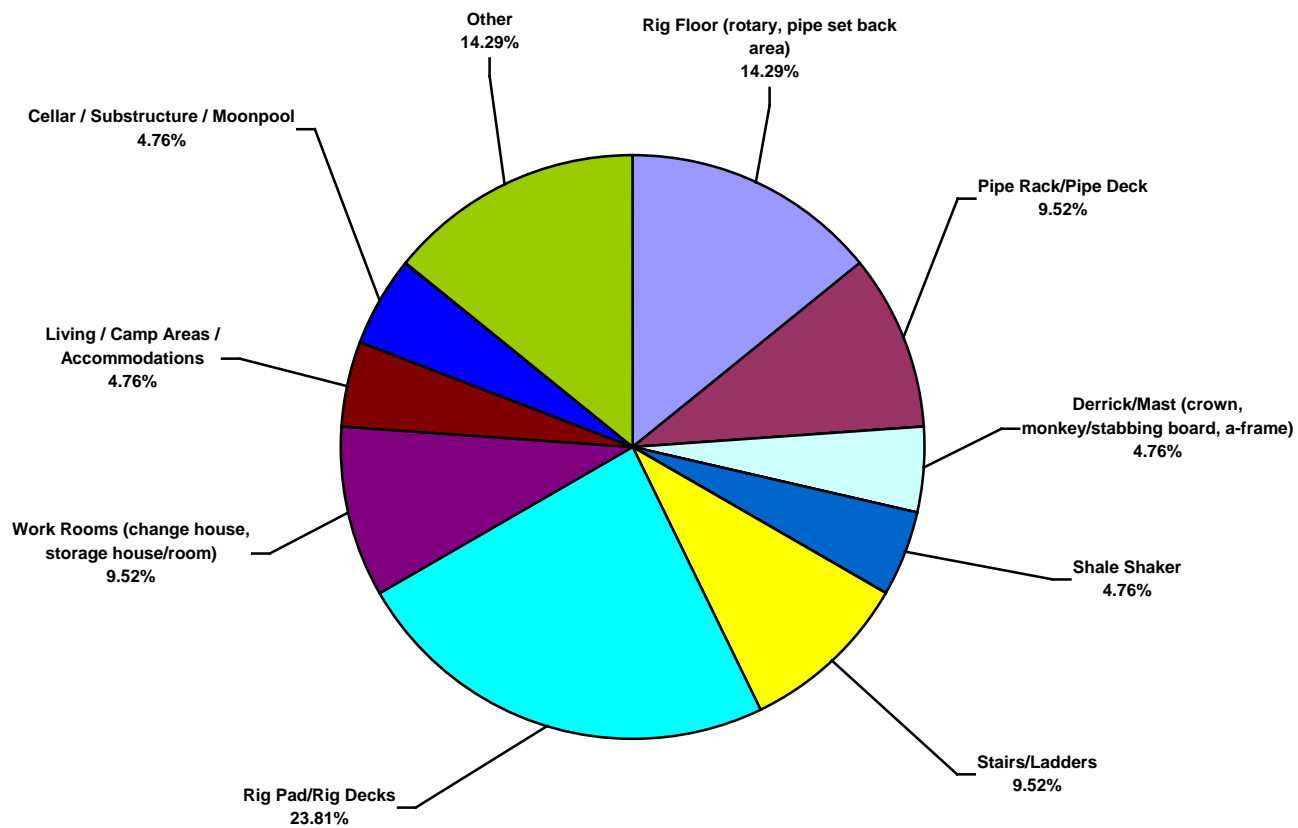
Asia Pacific Land Total Lost Time Incidents by Operation (Chart 11)
Based on 21 Incidents



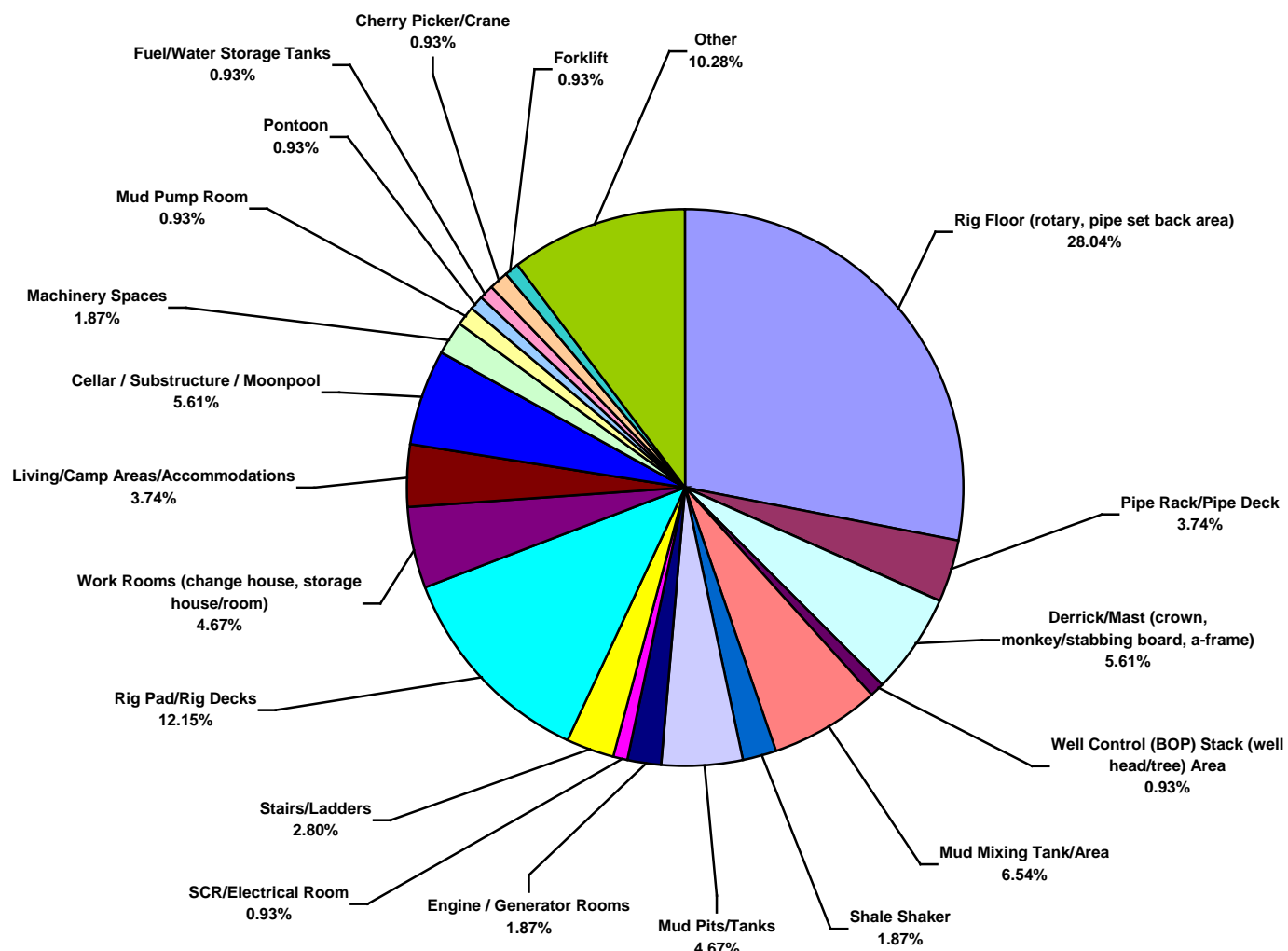
Asia Pacific Land Total Recordable Incidents by Operation (Chart 12)
Based on 107 Incidents



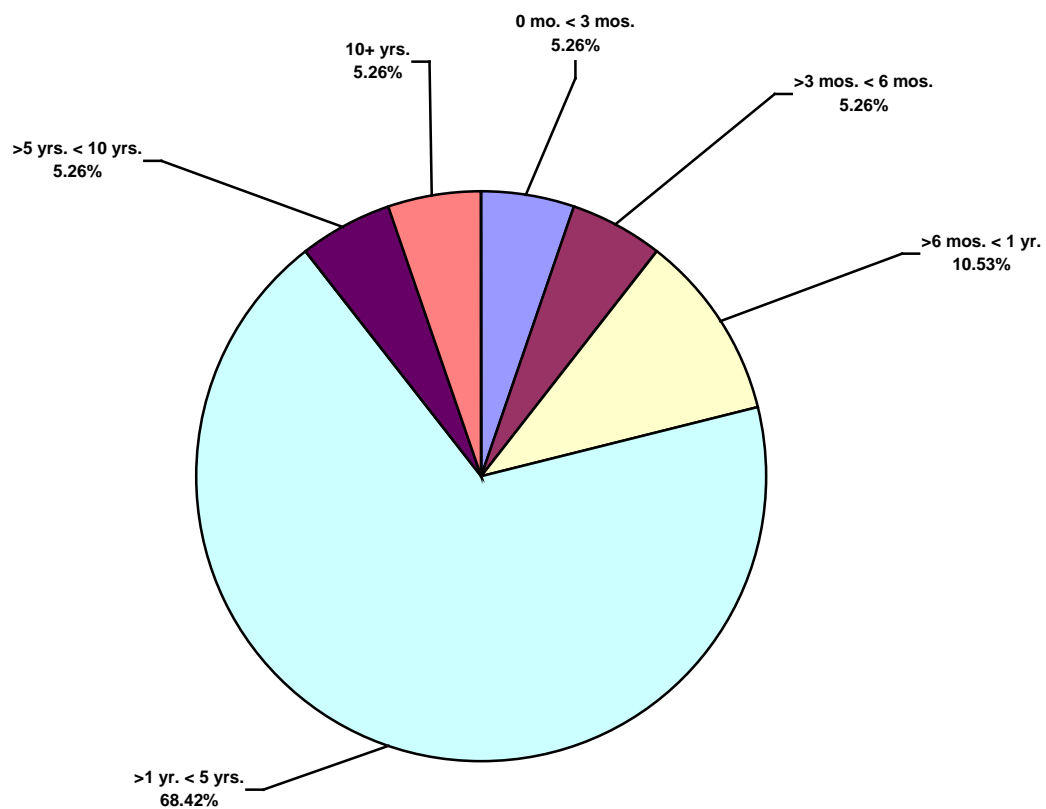
Asia Pacific Land Total Lost Time Incidents by Location (Chart 13)
Based on 21 Incidents



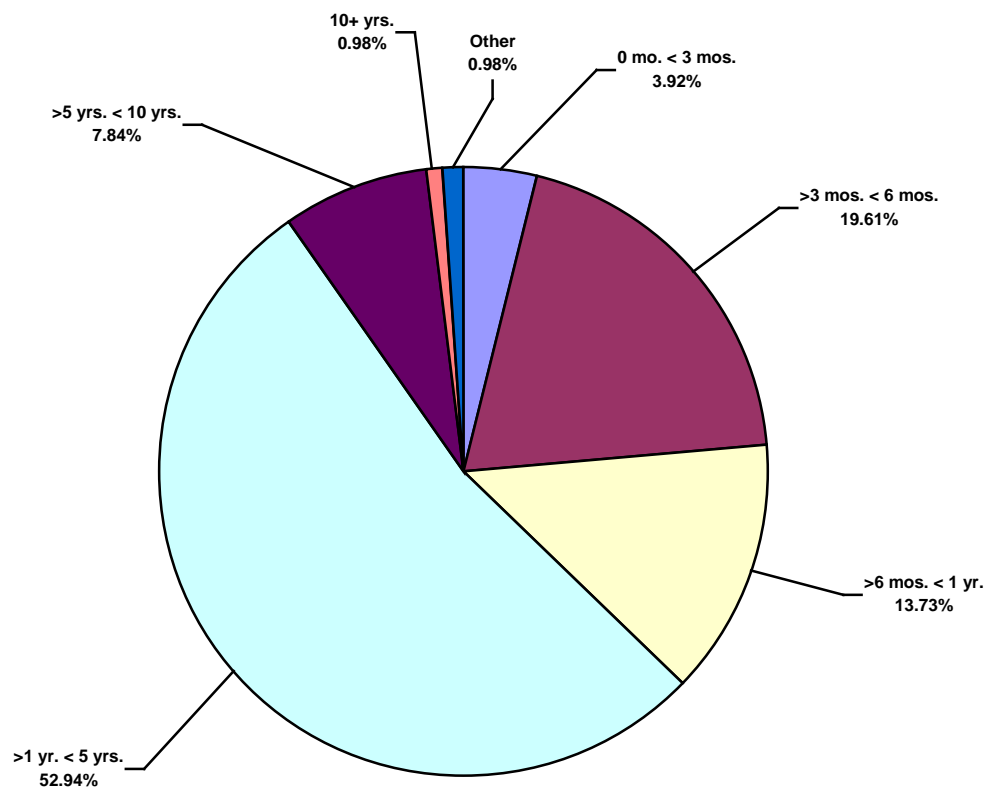
Asia Pacific Land Total Recordable Incidents by Location (Chart 14)
Based on 107 Incidents



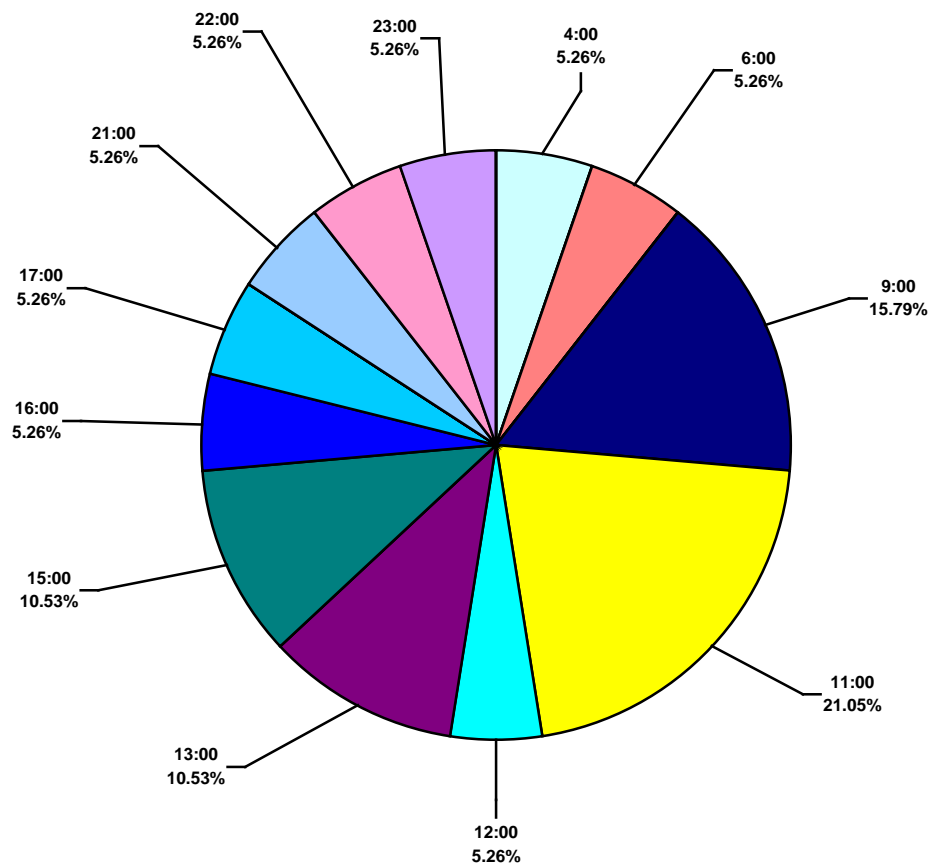
Asia Pacific Land Total Lost Time Incidents by Time in Service (Chart 15)
Based on 19 Incidents



Asia Pacific Land Total Recordable Incidents by Time in Service (Chart 16)
Based on 102 Incidents



Asia Pacific Land Total Lost Time Incidents by Time of Day (Chart 17)
Based on 19 Incidents



Asia Pacific Land Total Recordable Incidents by Time of Day (Chart 18)
Based on 103 Incidents

