



**IADC**

**IADC  
ISP PROGRAM**

**2013**



**Summary of Occupational  
Incidents  
(US Water Totals)**

*Issued 20 May 2014*

# Table of Contents

(Table of Contents is Hyperlinked, Just click on Topic & go)

IADC 2013 US WATER TOTALS (TABLE 1).....	1
<i>US Water Total LTI &amp; Recordable Incidence Rates vs Man-hours (Figure 1)</i> .....	1
IADC 2013 US WATER CHARTS .....	2
<i>US Water Total Lost Time Incidents by Month (Chart 1)</i> .....	2
<i>US Water Total Recordable Incidents by Month (Chart 2)</i> .....	3
<i>US Water Total Lost Time Incidents by Occupation (Chart 3)</i> .....	4
<i>US Water Total Recordable Incidents by Occupation (Chart 4)</i> .....	5
<i>US Water Total Lost Time Incidents by Body Part (Chart 5)</i> .....	6
<i>US Water Total Recordable Incidents by Body Part (Chart 6)</i> .....	7
<i>US Water Total Lost Time Incidents by Incident Type (Chart 7)</i> .....	8
<i>US Water Total Recordable Incidents by Incident Type (Chart 8)</i> .....	9
<i>US Water Total Lost Time Incidents by Equipment (Chart 9)</i> .....	10
<i>US Water Total Recordable Incidents by Equipment (Chart 10)</i> .....	11
<i>US Water Total Lost Time Incidents by Operation (Chart 11)</i> .....	12
<i>US Water Total Recordable Incidents by Operation (Chart 12)</i> .....	13
<i>US Water Total Lost Time Incidents by Location (Chart 13)</i> .....	14
<i>US Water Total Recordable Incidents by Location (Chart 14)</i> .....	15
<i>US Water Total Lost Time Incidents by Time in Service (Chart 15)</i> .....	16
<i>US Water Total Recordable Incidents by Time in Service (Chart 16)</i> .....	17
<i>US Water Total Lost Time Incidents by Time of Day (Chart 17)</i> .....	18
<i>US Water Total Recordable Incidents by Time of Day (Chart 18)</i> .....	19

## IADC 2013 US Water Totals (Table 1)

	<u>Total</u>
Total Man-hours	43,216,007
Total Medical Treatment Incidents	72
Total Restricted Work Incidents	65
Total Lost Time Incidents	32
Total Fatalities	0
Total Recordables	169
MTO Incidence Rate	0.33
RWC Incidence Rate	0.30
LTI Incidence Rate	0.15
LTI Frequency Rate	0.74
DART Incidence Rate	0.45
DART Frequency Rate	2.24
Recordable Incidence Rate	0.78
Recordable Frequency Rate	3.91

Companies Reporting: Water – 15

Medical Treatment Incidence Rate = MTOs X 200,000

Restricted Work Incidence Rate = RWCs X 200,000

Lost Time Incidence Rate = LTIs + FTLs X 200,000

DART Incidence Rate = LTIs + RWC X 200,000

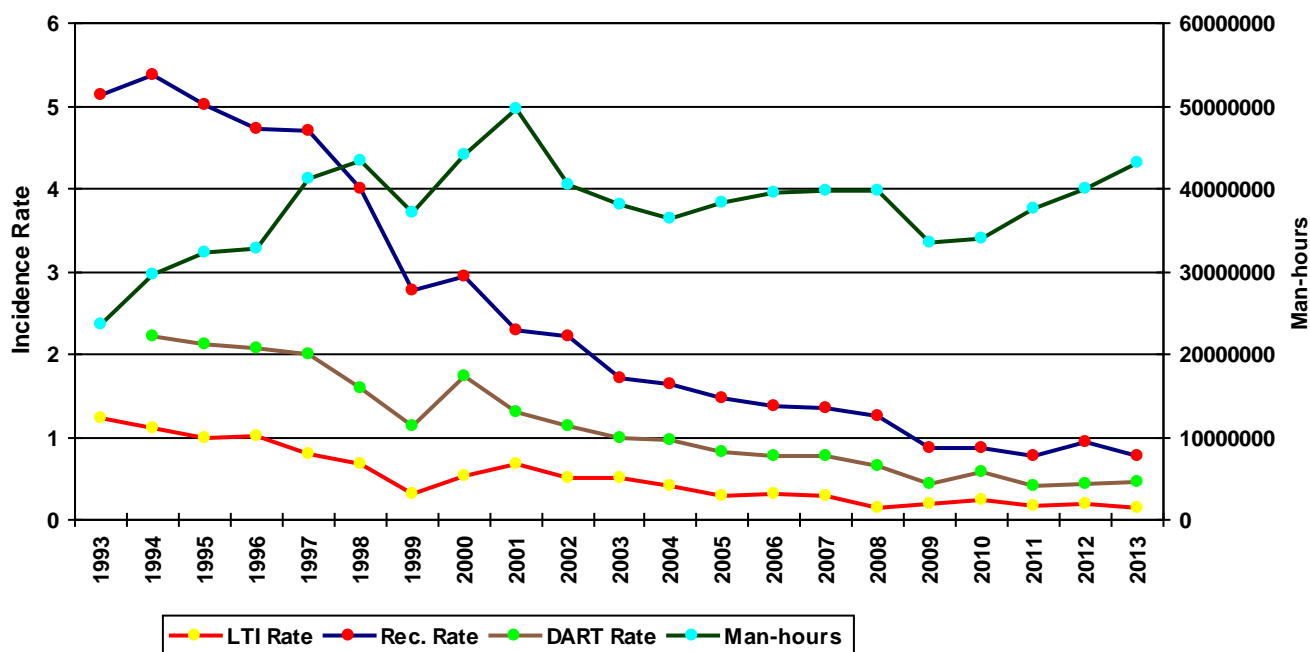
Recordable Incidence Rate = RCRD X 200,000

Lost Time Frequency Rate = LTIs +FTLs X 1,000,000

DART Frequency Rate = LTIs + RWC X 1,000,000

Recordable Frequency Rate = RCRD X 1,000,000

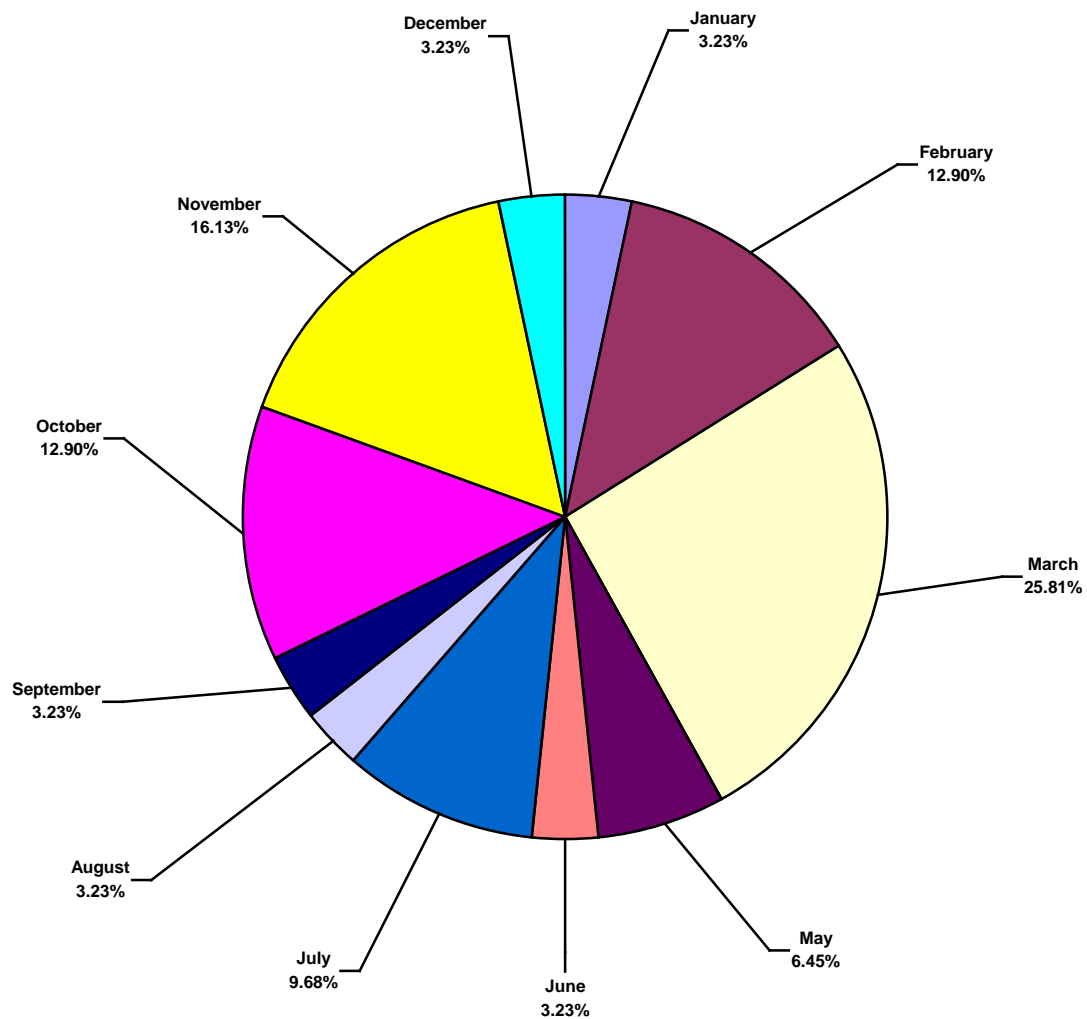
US Water Total LTI & Recordable Incidence Rates vs Man-hours (Figure 1)



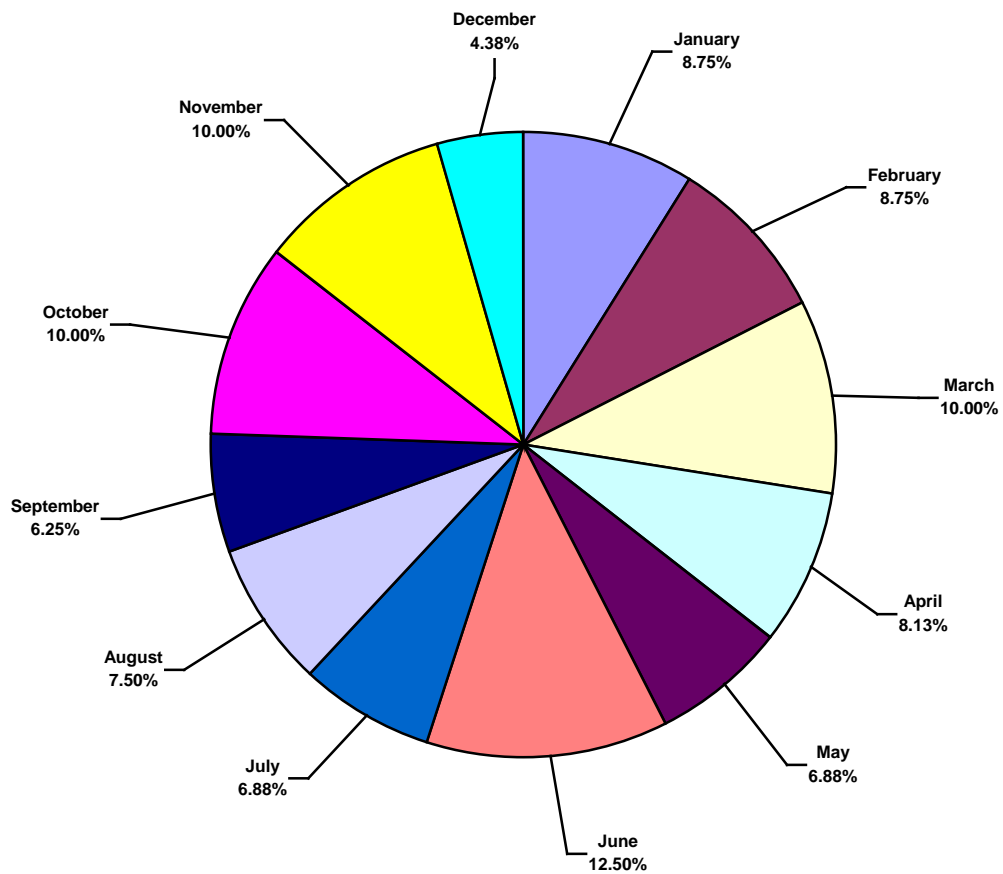
# IADC 2013 US Water Charts

## US Water Total Lost Time Incidents by Month (Chart 1)

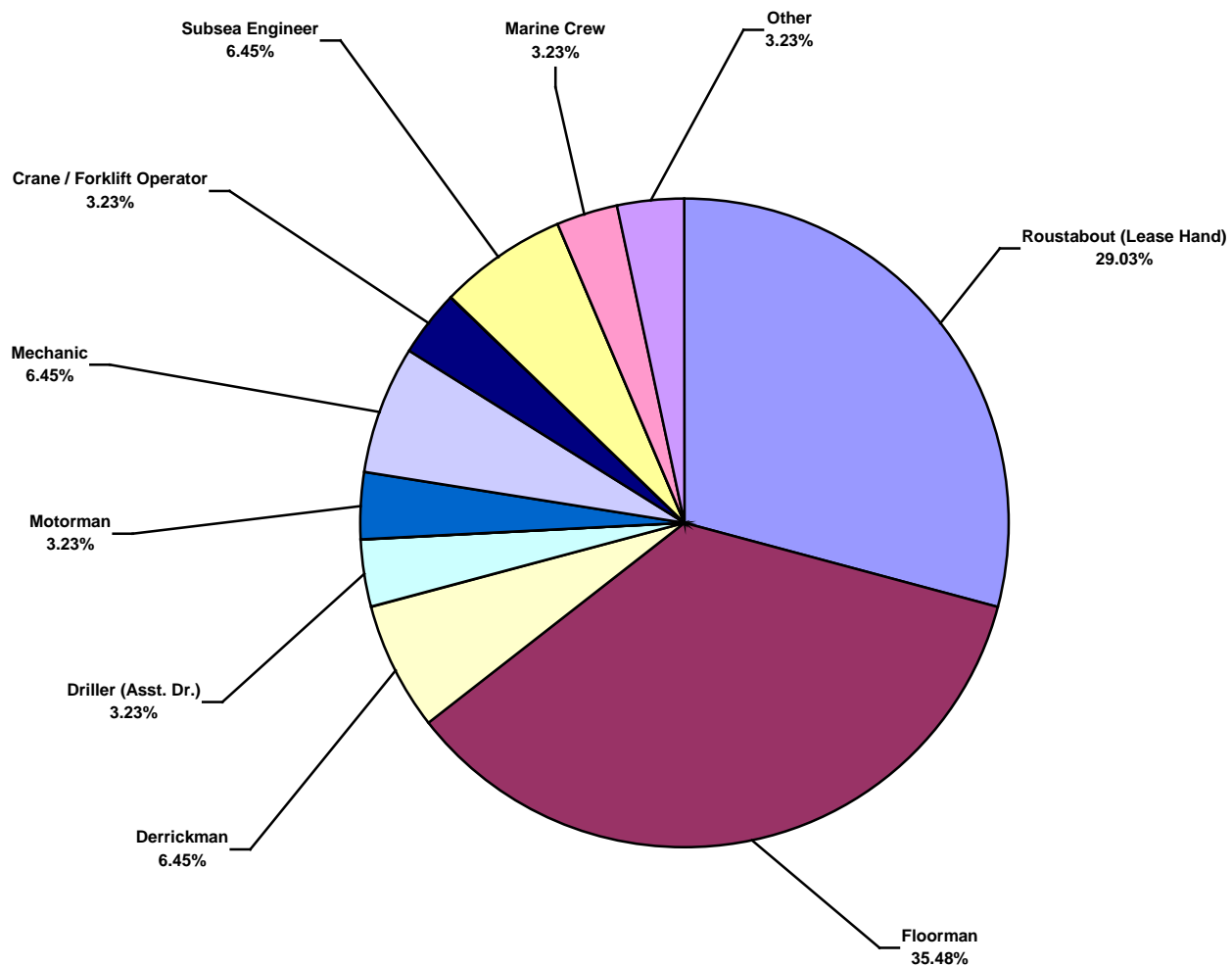
Based on 31 Incidents



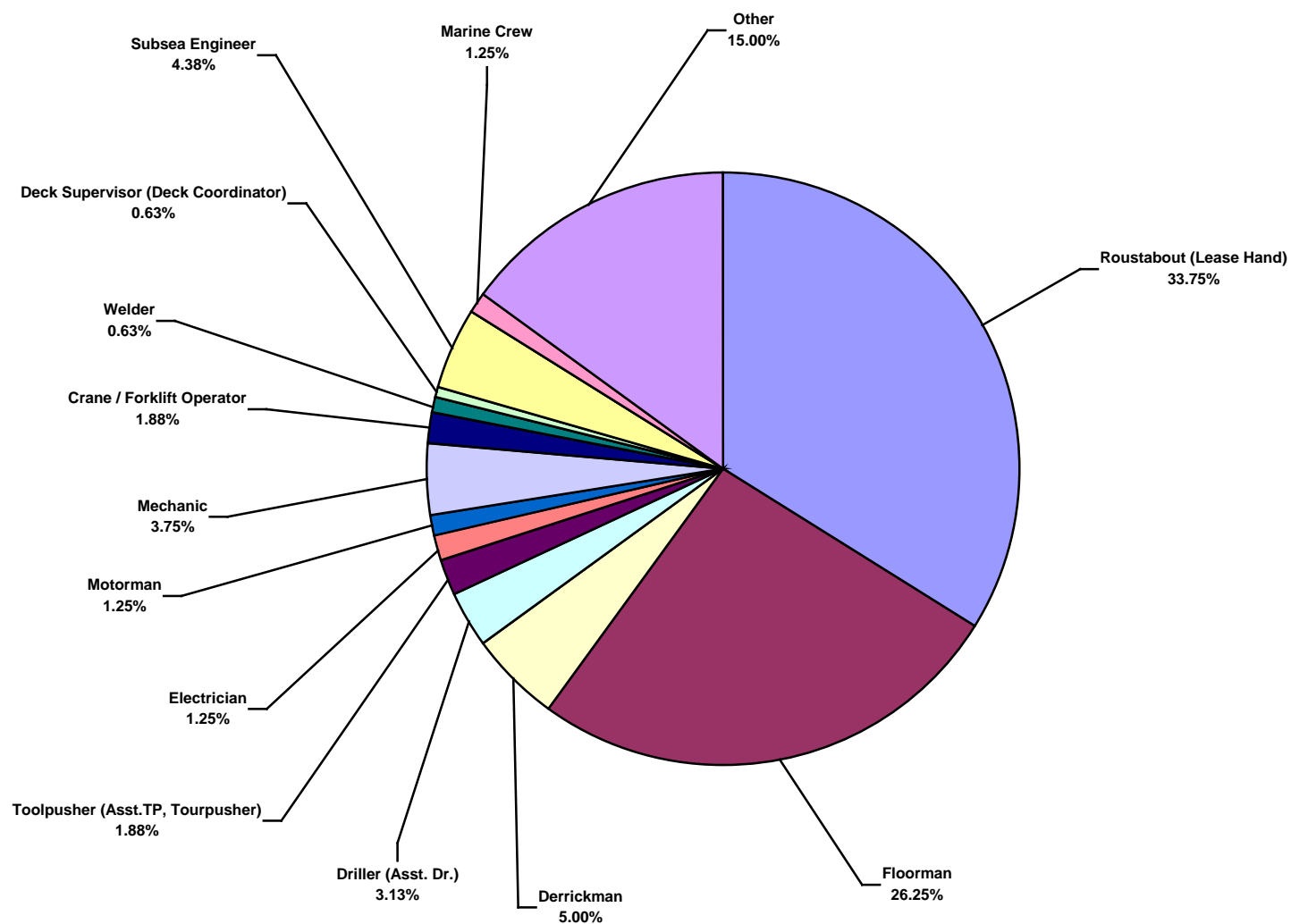
**US Water Total Recordable Incidents by Month (Chart 2)**  
Based on 160 Incidents



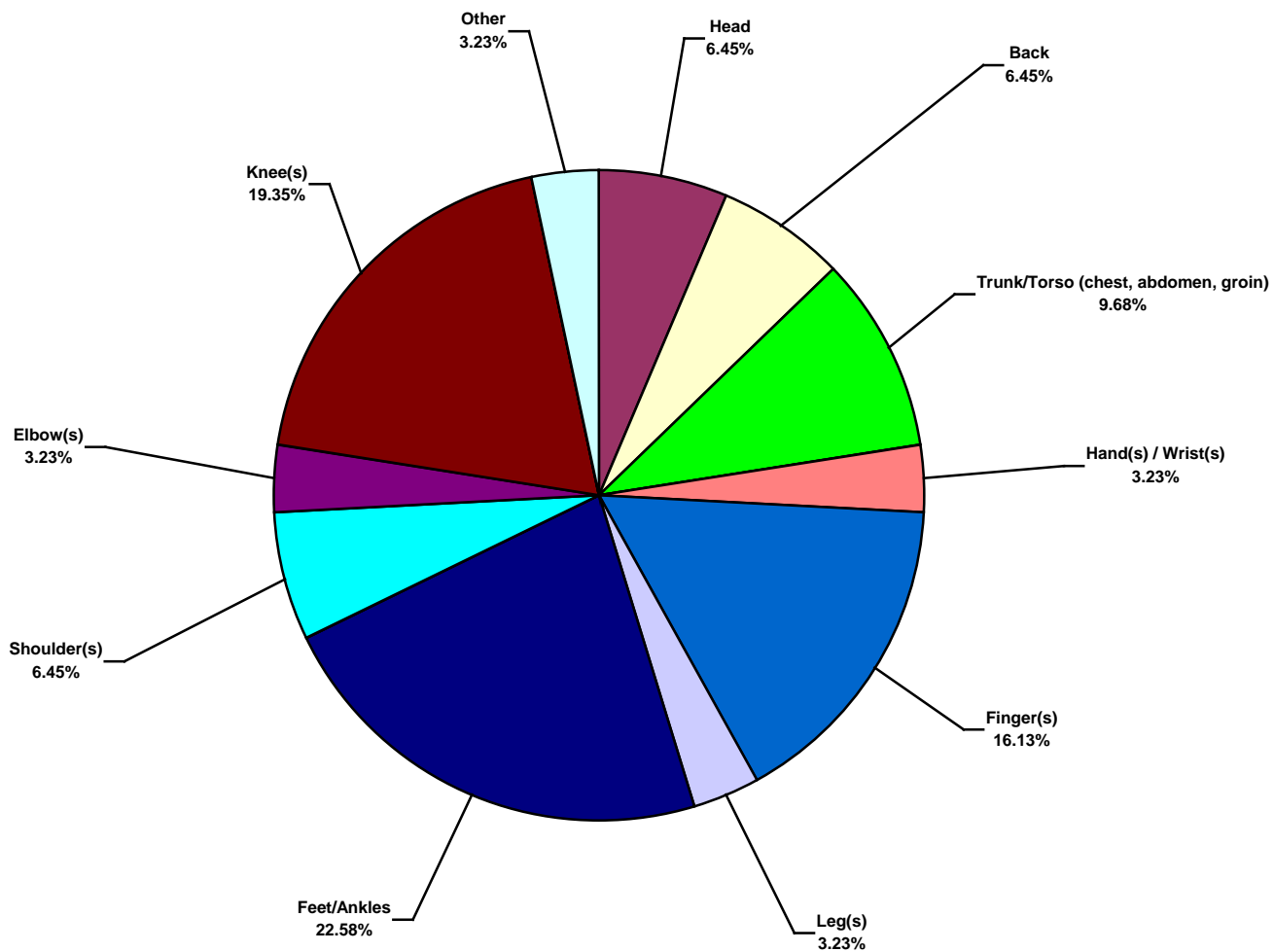
**US Water Total Lost Time Incidents by Occupation (Chart 3)**  
Based on 31 Incidents



**US Water Total Recordable Incidents by Occupation (Chart 4)**  
Based on 160 Incidents

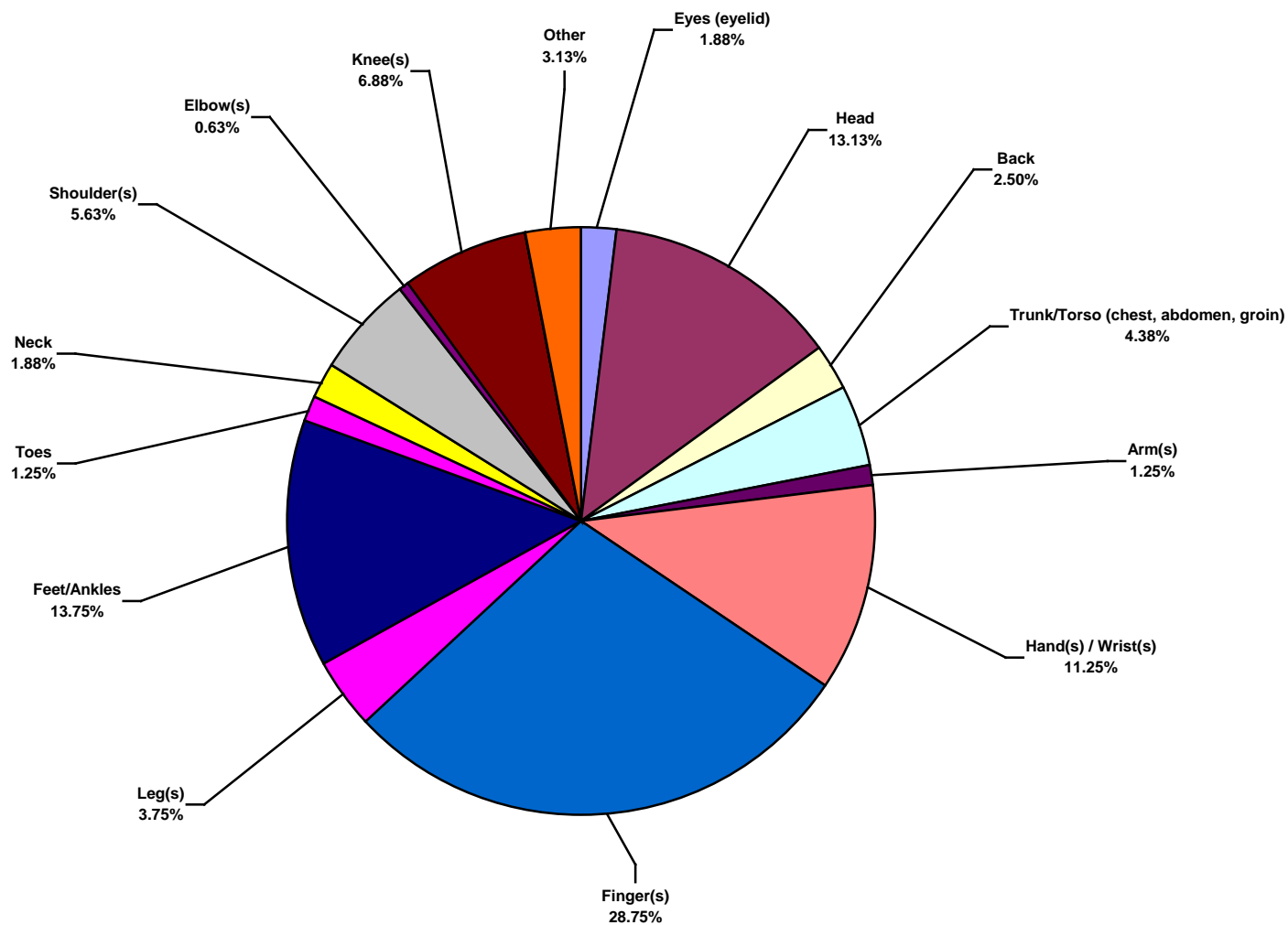


**US Water Total Lost Time Incidents by Body Part (Chart 5)**  
Based on 31 Incidents

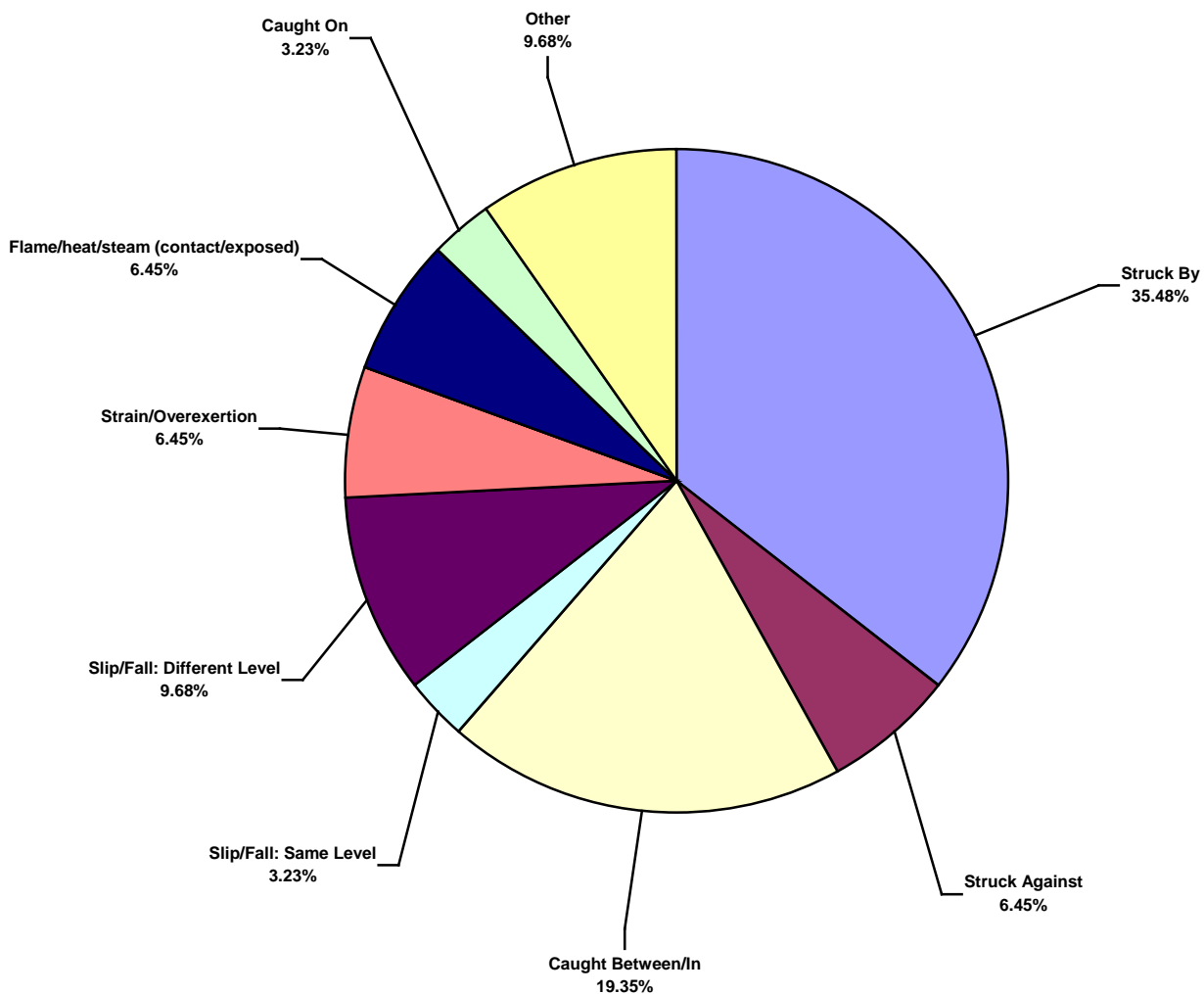




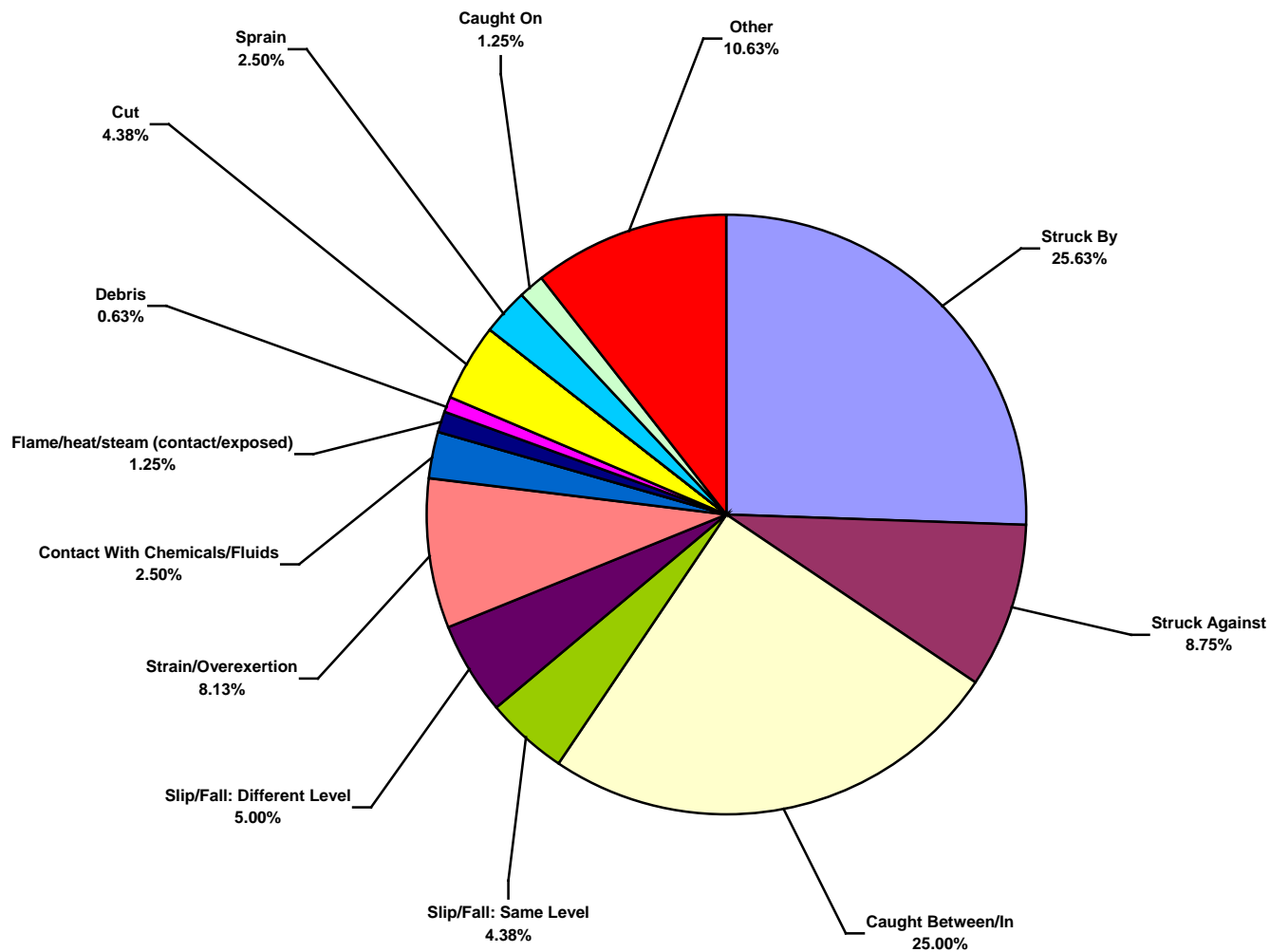
**US Water Total Recordable Incidents by Body Part (Chart 6)**  
Based on 160 Incidents



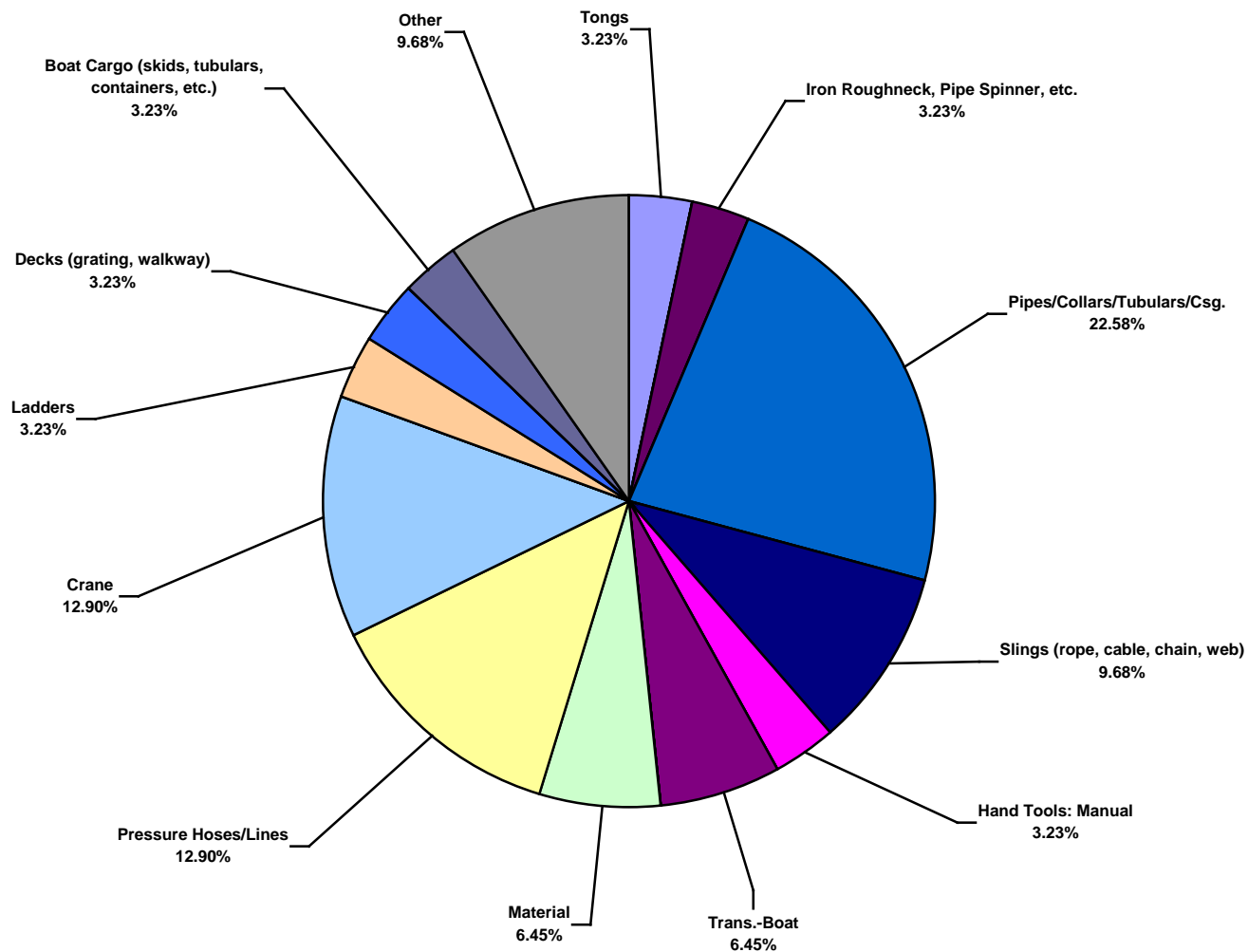
**US Water Total Lost Time Incidents by Incident Type (Chart 7)**  
Based on 31 Incidents



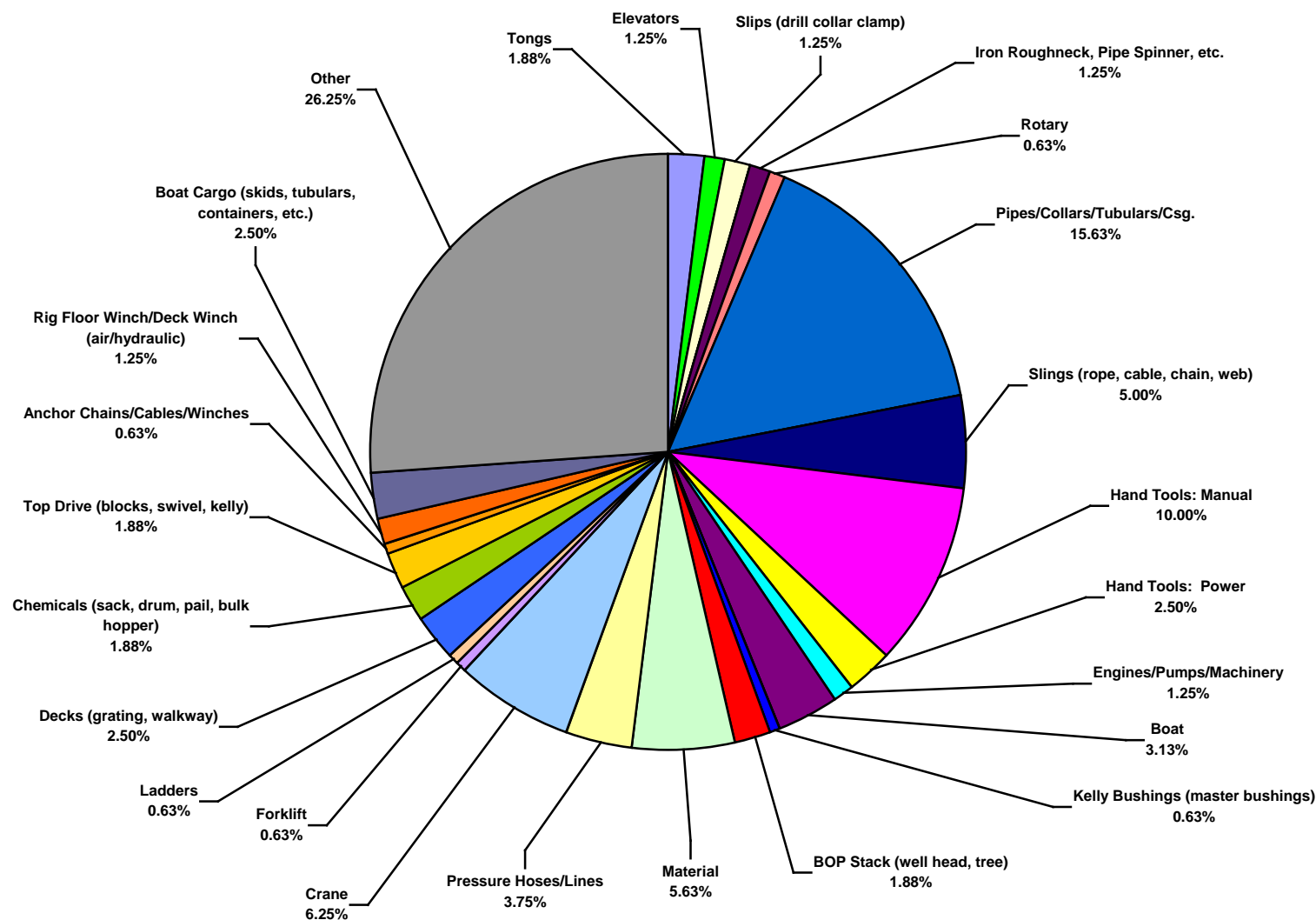
**US Water Total Recordable Incidents by Incident Type (Chart 8)**  
Based on 160 Incidents



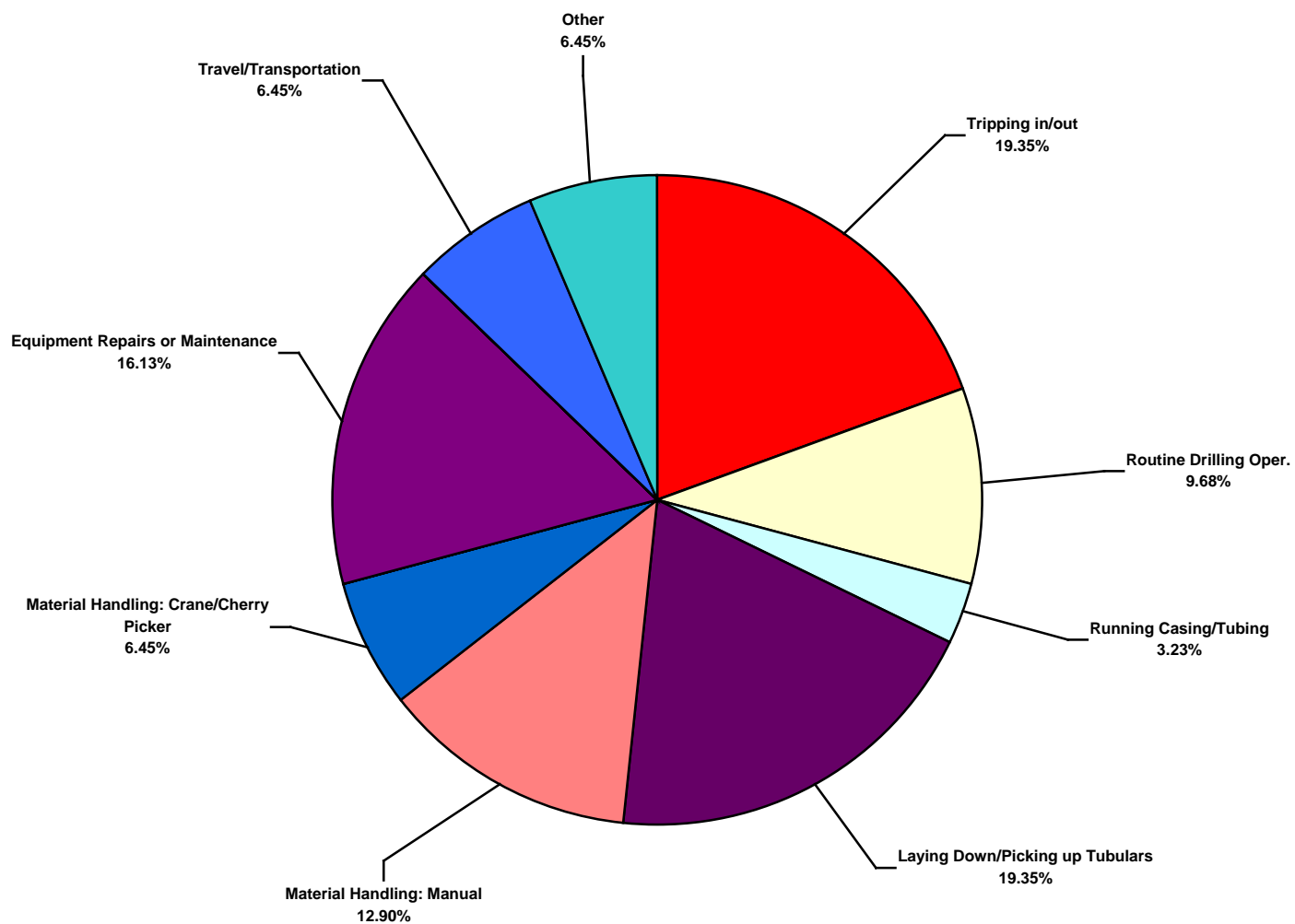
**US Water Total Lost Time Incidents by Equipment (Chart 9)**  
Based on 31 Incidents



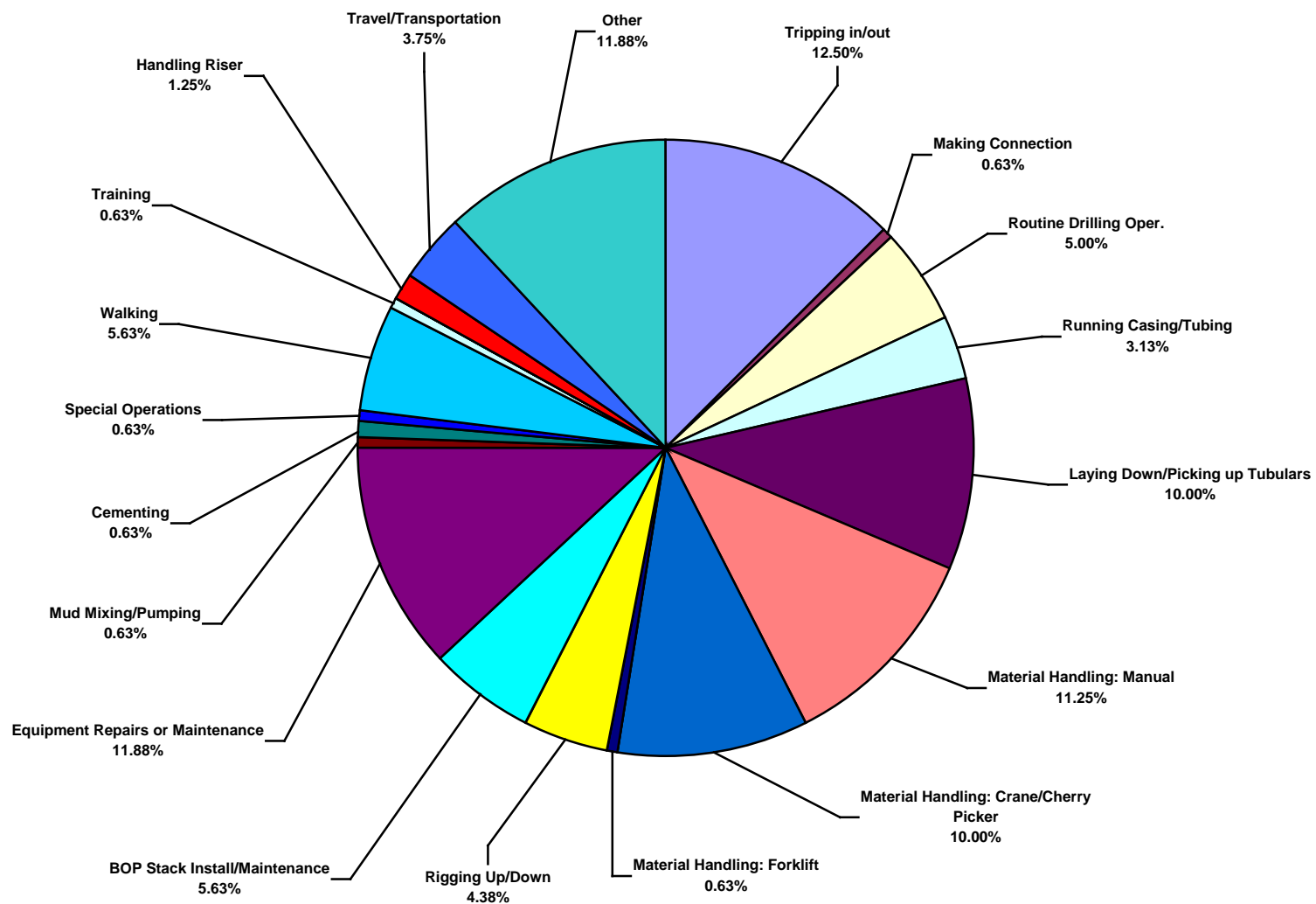
**US Water Total Recordable Incidents by Equipment (Chart 10)**  
Based on 160 Incidents



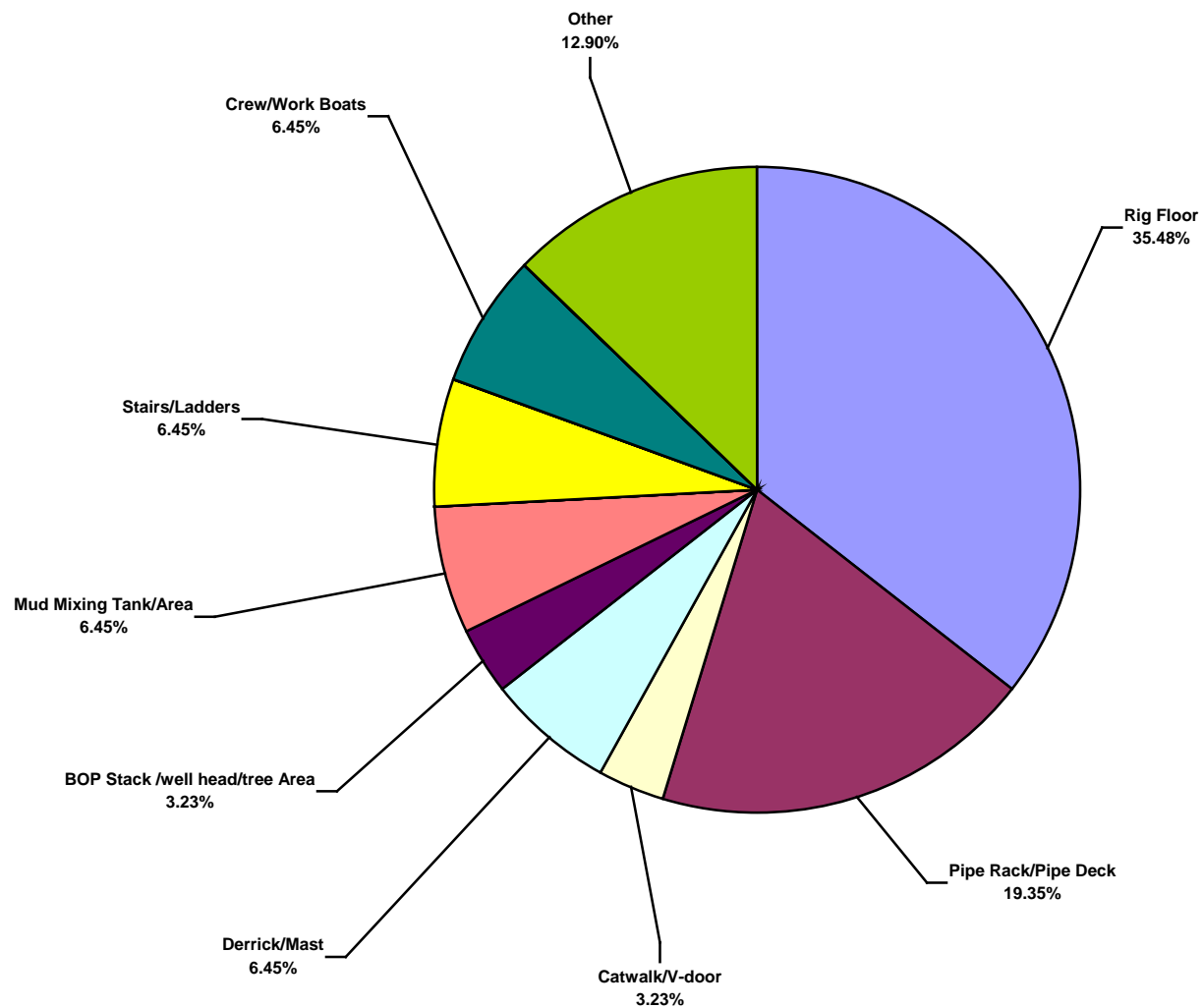
**US Water Total Lost Time Incidents by Operation (Chart 11)**  
Based on 31 Incidents



**US Water Total Recordable Incidents by Operation (Chart 12)**  
Based on 160 Incidents

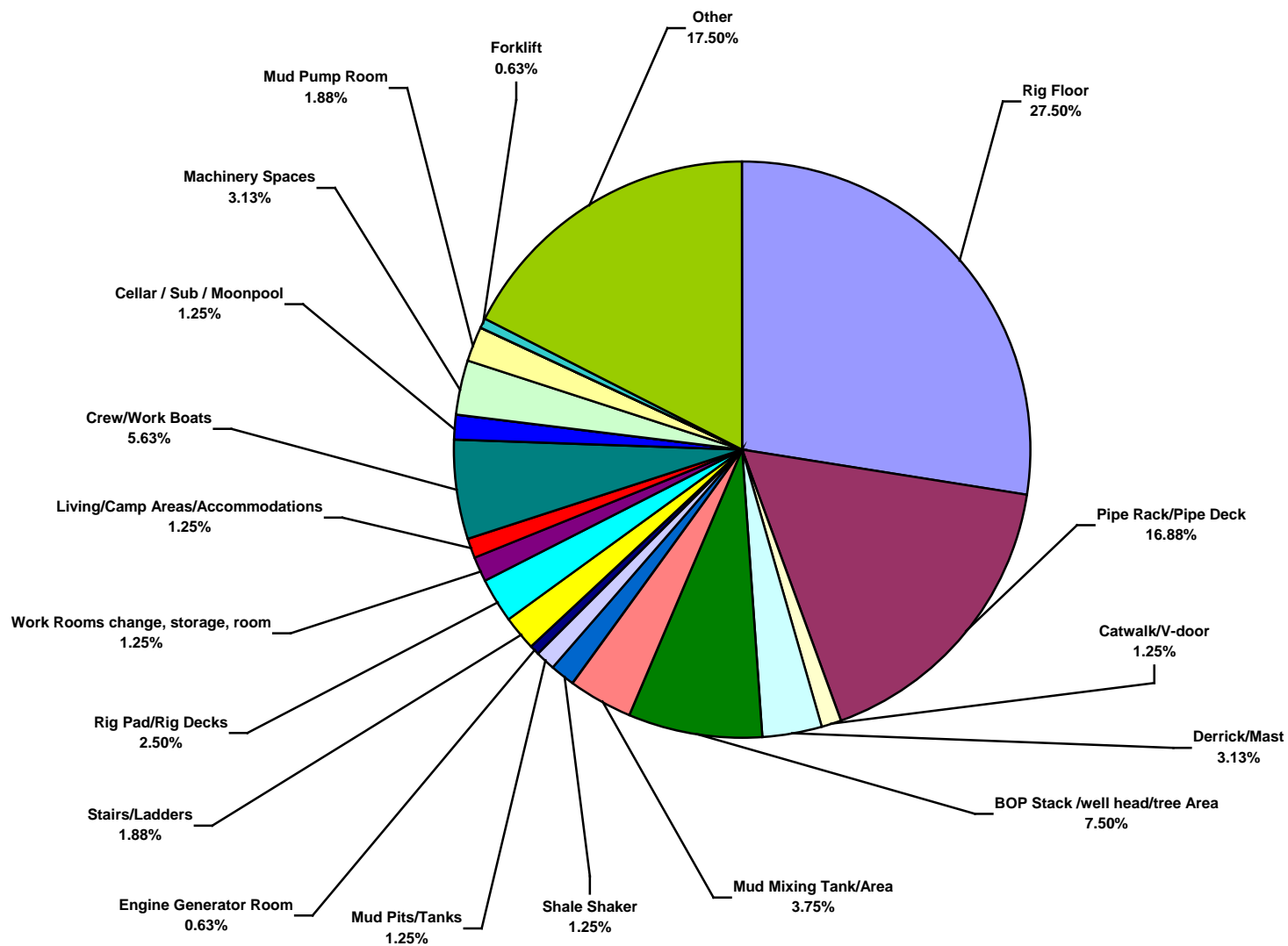


**US Water Total Lost Time Incidents by Location (Chart 13)**  
Based on 31 Incidents

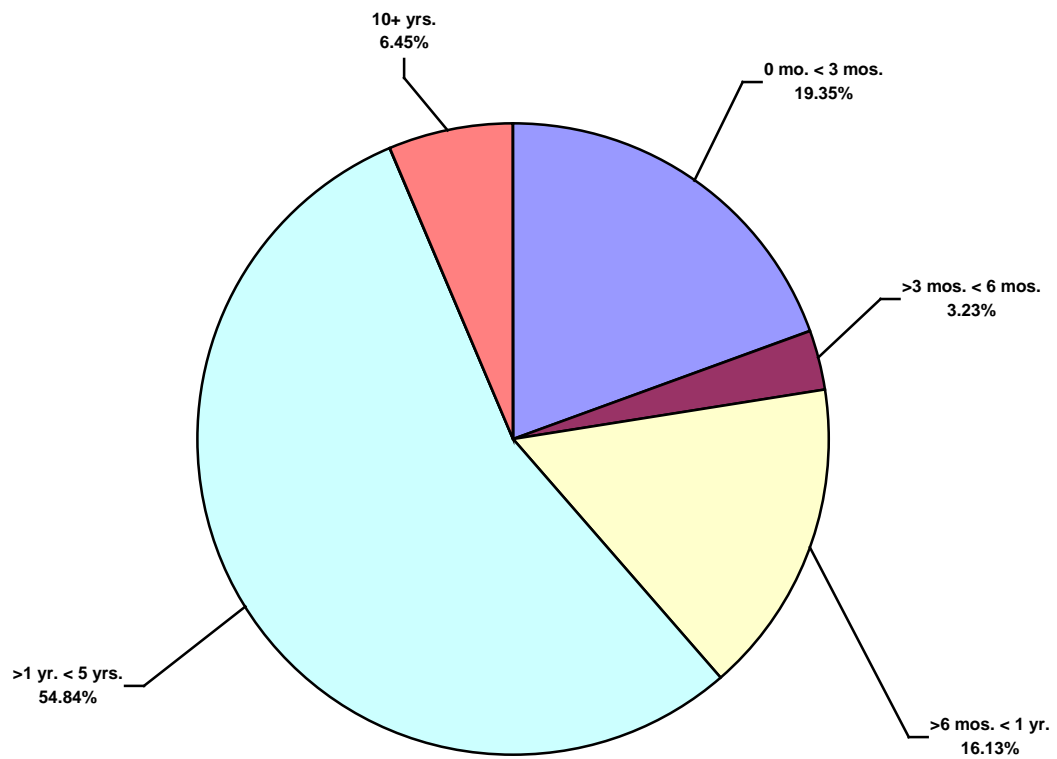




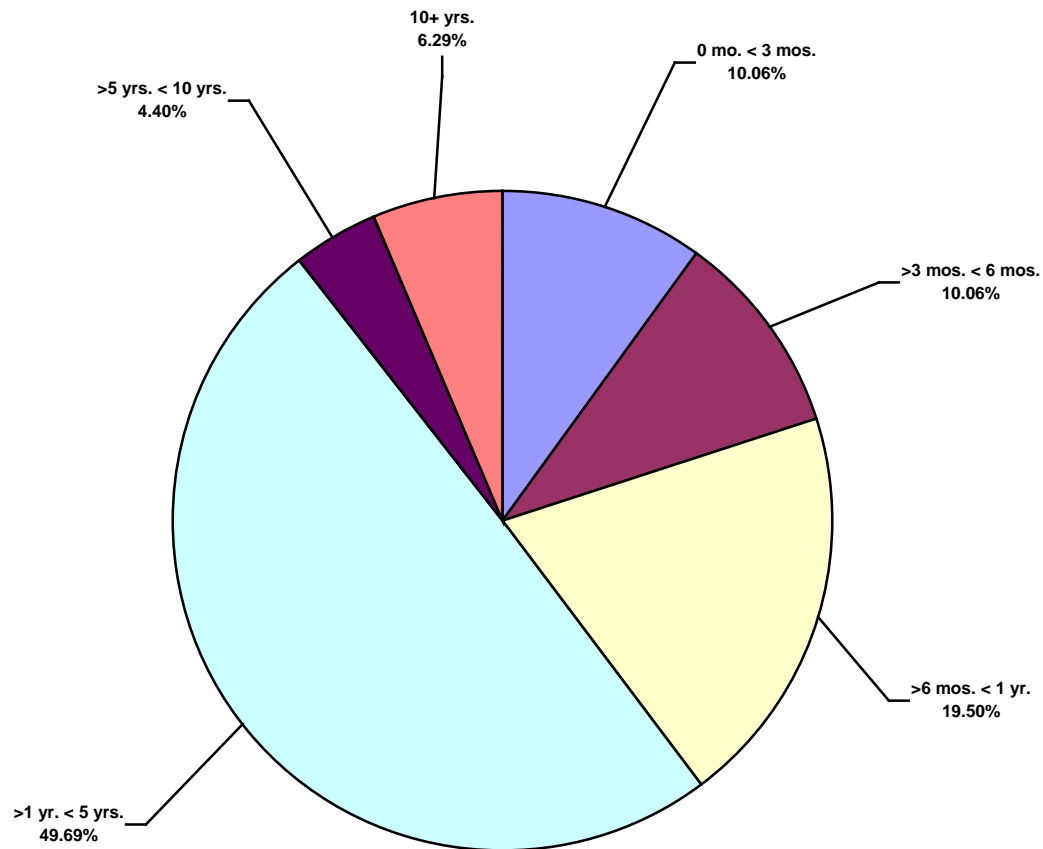
**US Water Total Recordable Incidents by Location (Chart 14)**  
Based on 160 Incidents



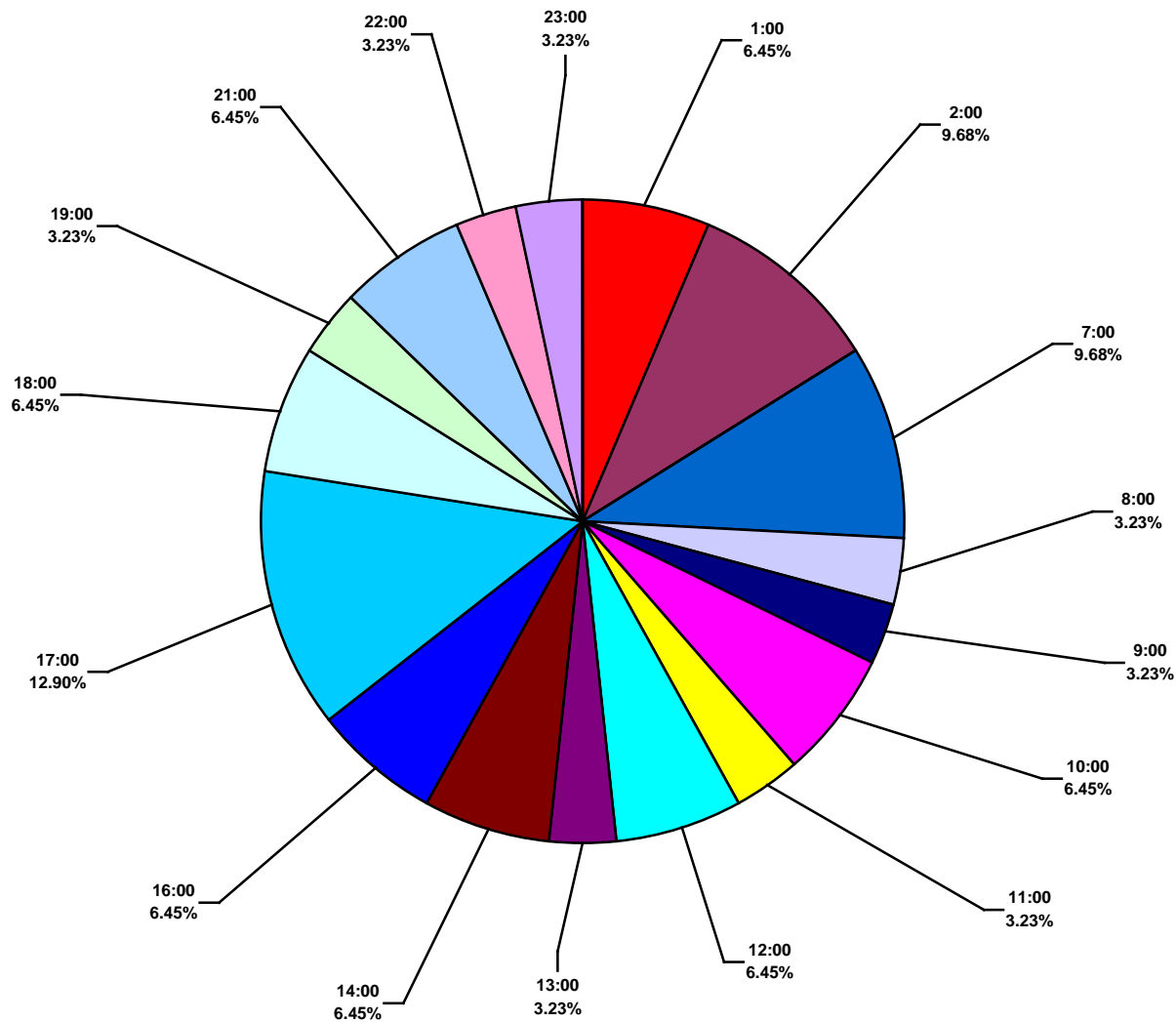
**US Water Total Lost Time Incidents by Time in Service (Chart 15)**  
Based on 31 Incidents



**US Water Total Recordable Incidents by Time in Service (Chart 16)**  
Based on 159 Incidents



**US Water Total Lost Time Incidents by Time of Day (Chart 17)**  
Based on 31 Incidents



**US Water Total Recordable Incidents by Time of Day (Chart 18)**  
Based on 157 Incidents

