



IADC

**IADC
ISP PROGRAM**

2013



**Summary of Occupational
Incidents
(South America Water Totals)**

Issued 20 May 2014

Table of Contents

(Table of Contents is Hyperlinked, Just click on Topic & go)

IADC 2013 SOUTH AMERICA WATER TOTALS (TABLE 1).....	1
<i>South America Water Total Incidence Rates vs Man-hours (Figure 1).....</i>	<i>1</i>
IADC 2013 SOUTH AMERICA WATER CHARTS	2
<i>South America Water Total Lost Time Incidents by Month (Chart 1).....</i>	<i>2</i>
<i>South America Water Total Recordable Incidents by Month (Chart 2)</i>	<i>3</i>
<i>South America Water Total Lost Time Incidents by Occupation (Chart 3).....</i>	<i>4</i>
<i>South America Water Total Recordable Incidents by Occupation (Chart 4).....</i>	<i>5</i>
<i>South America Water Total Lost Time Incidents by Body Part (Chart 5).....</i>	<i>6</i>
<i>South America Water Total Recordable Incidents by Body Part (Chart 6)</i>	<i>7</i>
<i>South America Water Total Lost Time Incidents by Incident Type (Chart 7)</i>	<i>8</i>
<i>South America Water Total Recordable Incidents by Incident Type (Chart 8).....</i>	<i>9</i>
<i>South America Water Total Lost Time Incidents by Equipment (Chart 9).....</i>	<i>10</i>
<i>South America Water Total Recordable Incidents by Equipment (Chart 10)</i>	<i>11</i>
<i>South America Water Total Lost Time Incidents by Operation (Chart 11).....</i>	<i>12</i>
<i>South America Water Total Recordable Incidents by Operation (Chart 12)</i>	<i>13</i>
<i>South America Water Total Lost Time Incidents by Location (Chart 13).....</i>	<i>14</i>
<i>South America Water Total Recordable Incidents by Location (Chart 14).....</i>	<i>15</i>
<i>South America Water Total Lost Time Incidents by Time in Service (Chart 15)</i>	<i>16</i>
<i>South America Water Total Recordable Incidents by Time in Service (Chart 16).....</i>	<i>17</i>
<i>South America Water Total Lost Time Incidents by Time of Day (Chart 17).....</i>	<i>18</i>
<i>South America Water Total Recordable Incidents by Time of Day (Chart 18).....</i>	<i>19</i>

IADC 2013 South America Water Totals (Table 1)

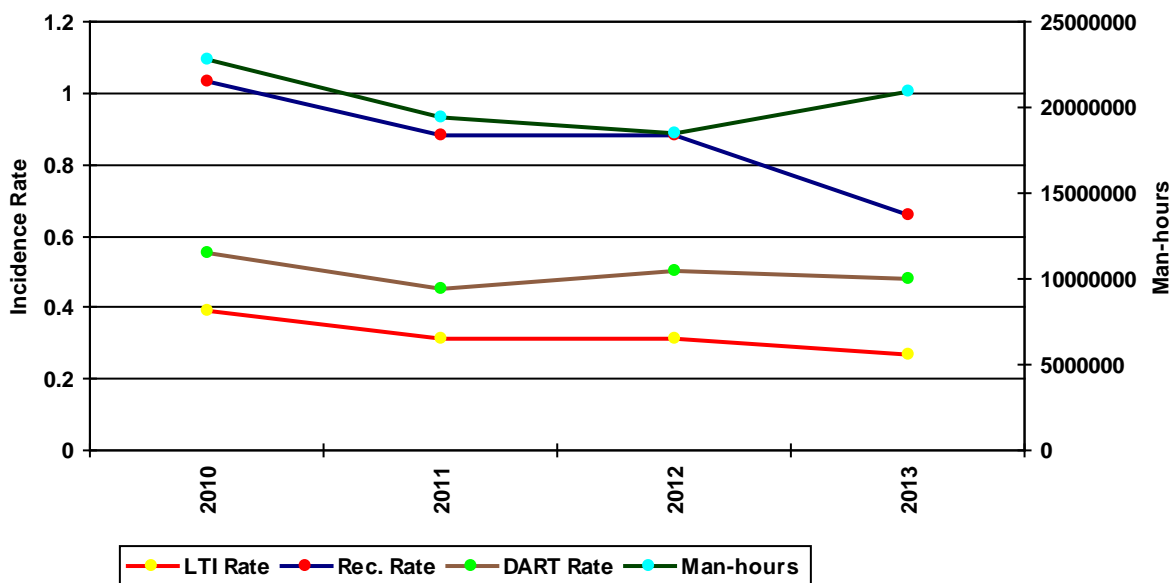
	<u>Total</u>
Total Man-hours	20,976,133
Total Medical Treatment Incidents	19
Total Restricted Work Incidents	22
Total Lost Time Incidents	27
Total Fatalities	1
Total Recordables	69
MTO Incidence Rate	0.18
RWC Incidence Rate	0.21
LTI Incidence Rate	0.27
LTI Frequency Rate	1.33
DART Incidence Rate	0.48
DART Frequency Rate	2.38
Recordable Incidence Rate	0.66
Recordable Frequency Rate	3.29

Companies Reporting: Water – 13

Medical Treatment Incidence Rate = MTOs X 200,000
 Restricted Work Incidence Rate = RWCs X 200,000
 Lost Time Incidence Rate = LTIs + FTLs X 200,000
 DART Incidence Rate = LTIs + RWC X 200,000
 Recordable Incidence Rate = RCRD X 200,000

Lost Time Frequency Rate = LTIs +FTLs X 1,000,000
 DART Frequency Rate = LTIs + RWC X 1,000,000
 Recordable Frequency Rate = RCRD X 1,000,000

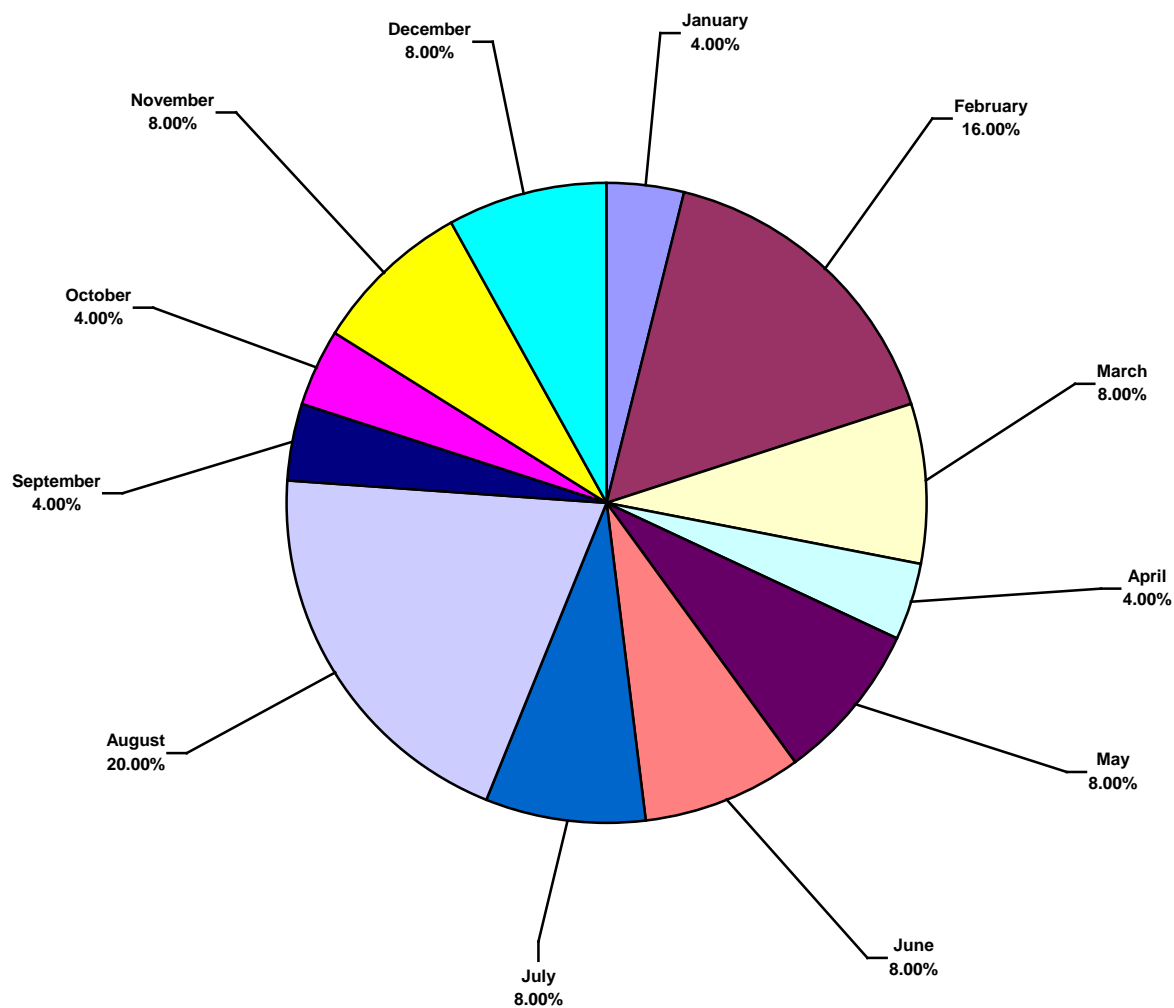
South America Water Total Incidence Rates vs Man-hours (Figure 1)



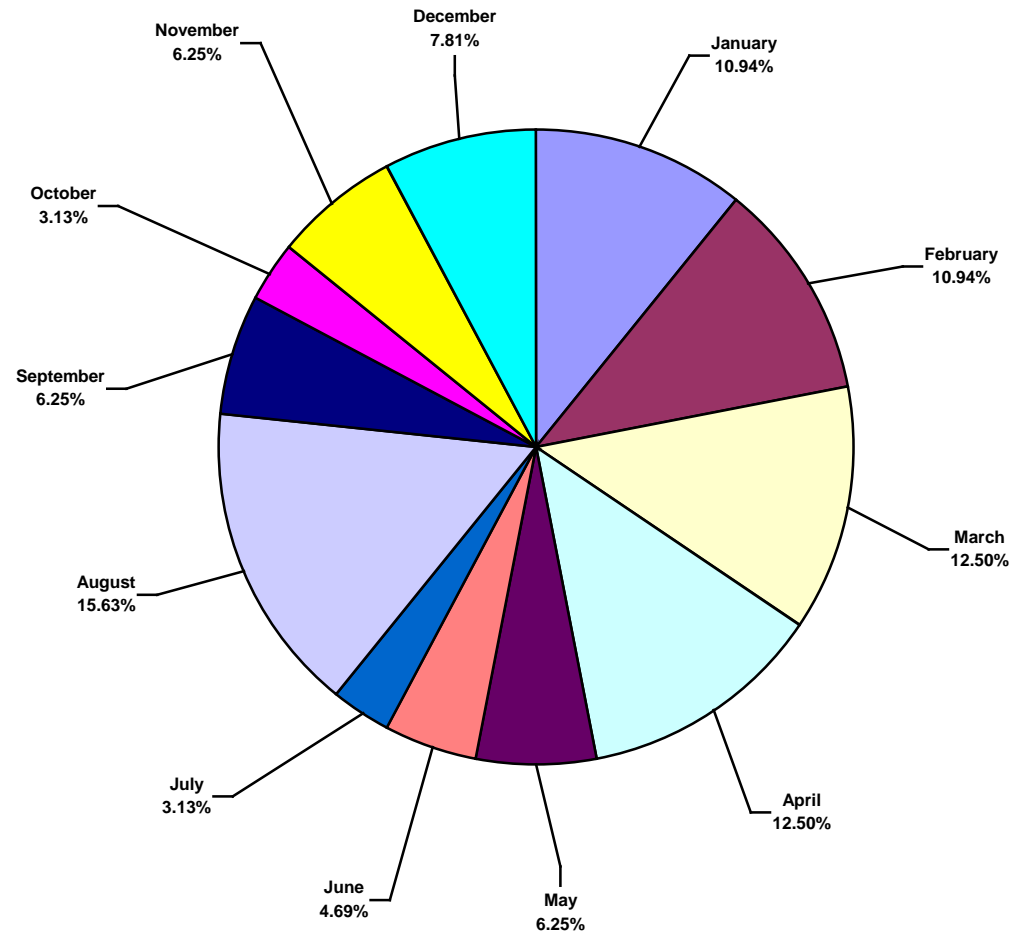
IADC 2013 South America Water Charts

South America Water Total Lost Time Incidents by Month (Chart 1)

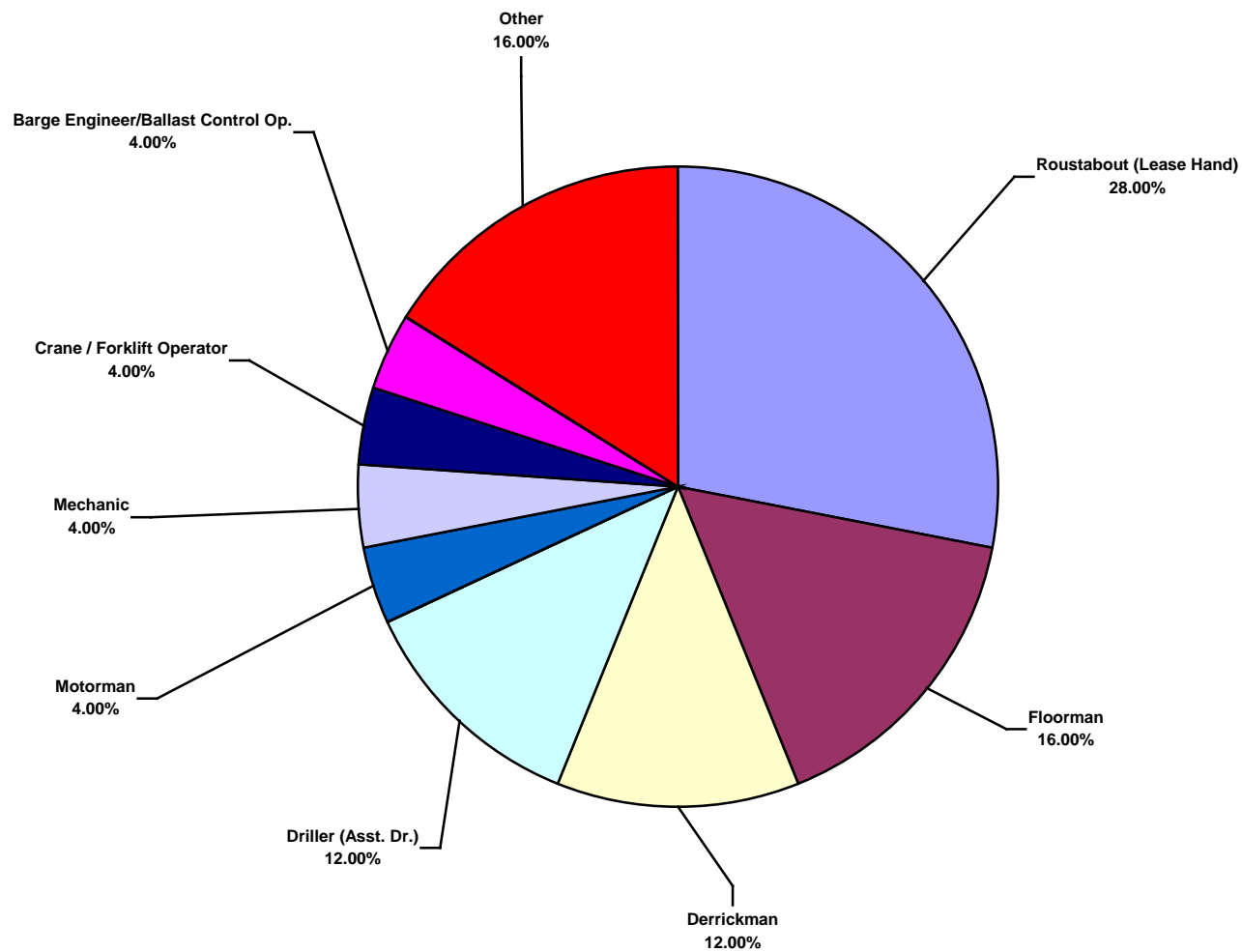
Based on 25 Incidents



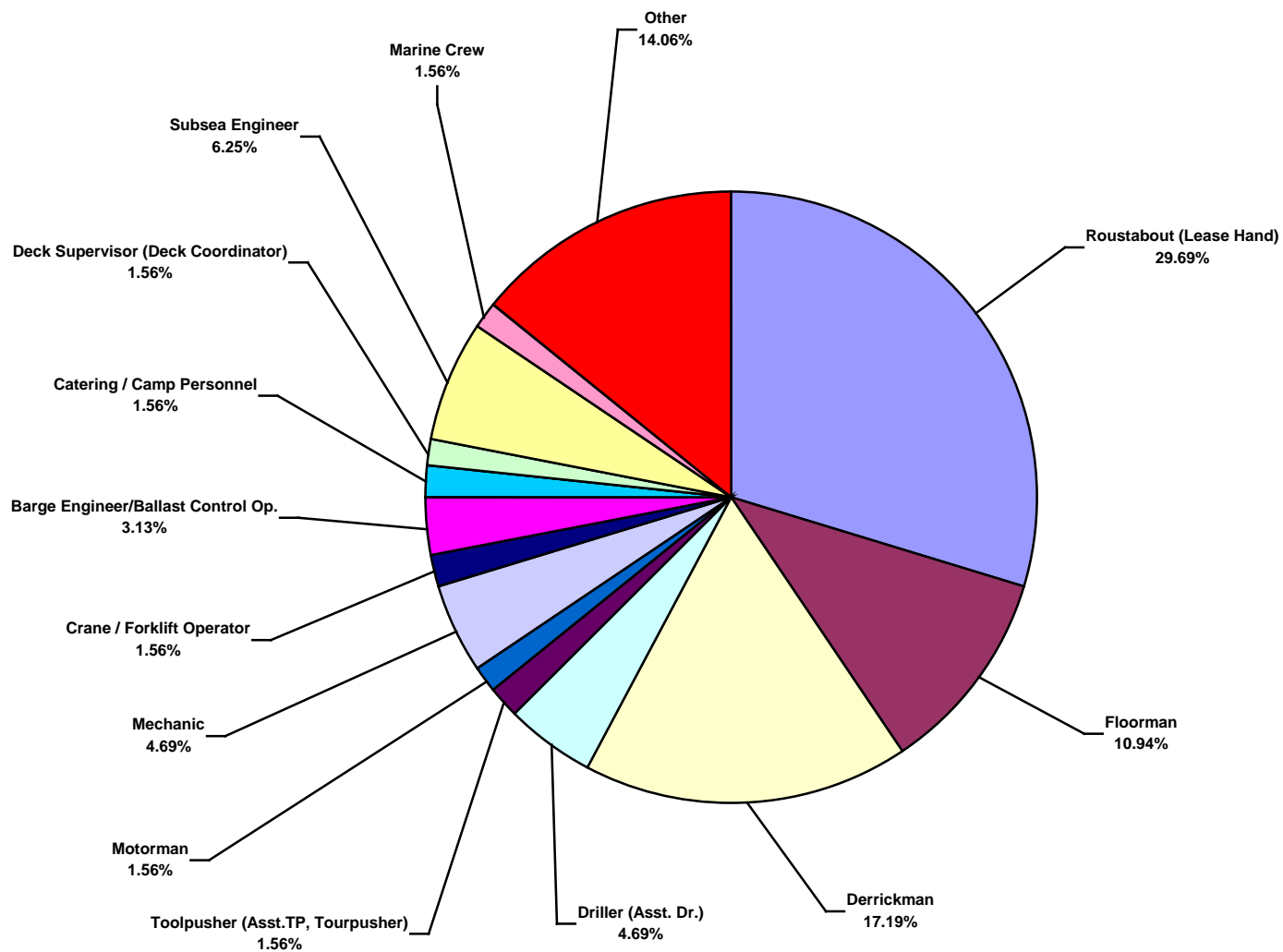
South America Water Total Recordable Incidents by Month (Chart 2)
Based on 64 Incidents



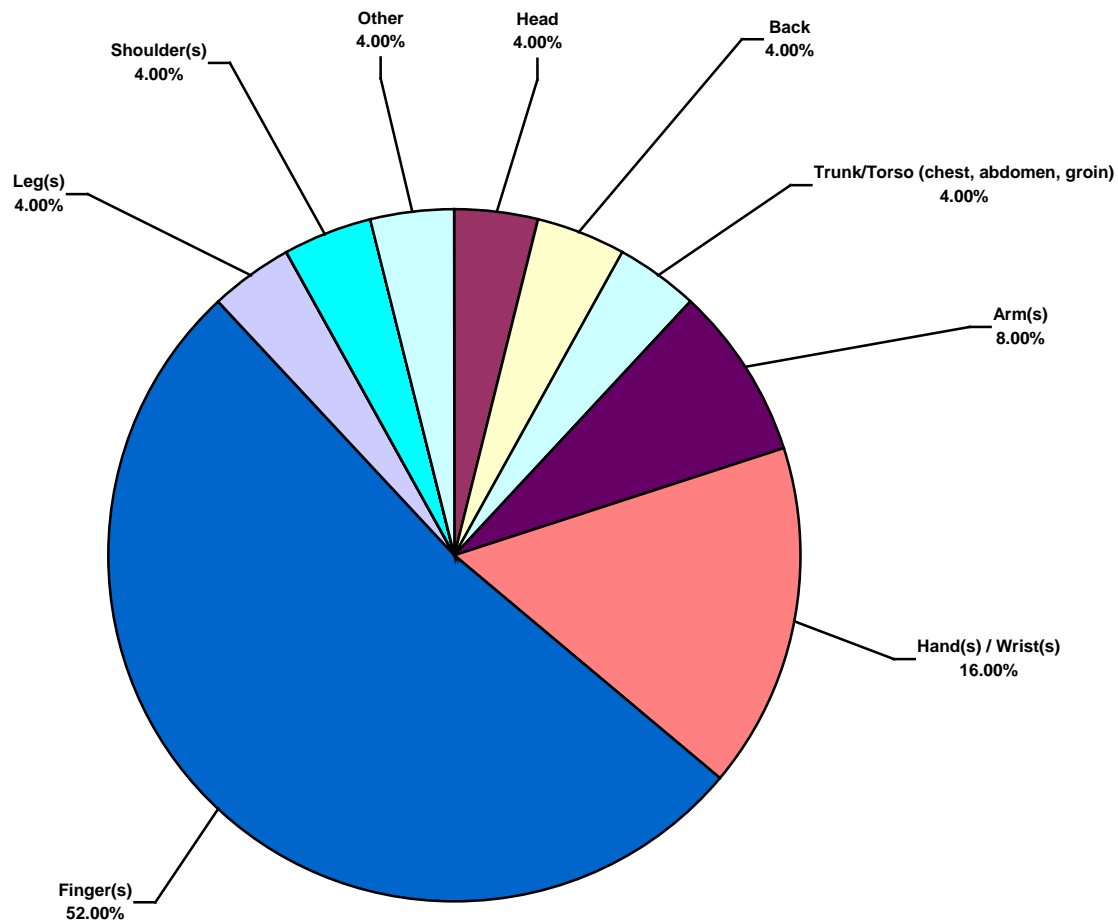
South America Water Total Lost Time Incidents by Occupation (Chart 3)
Based on 25 Incidents



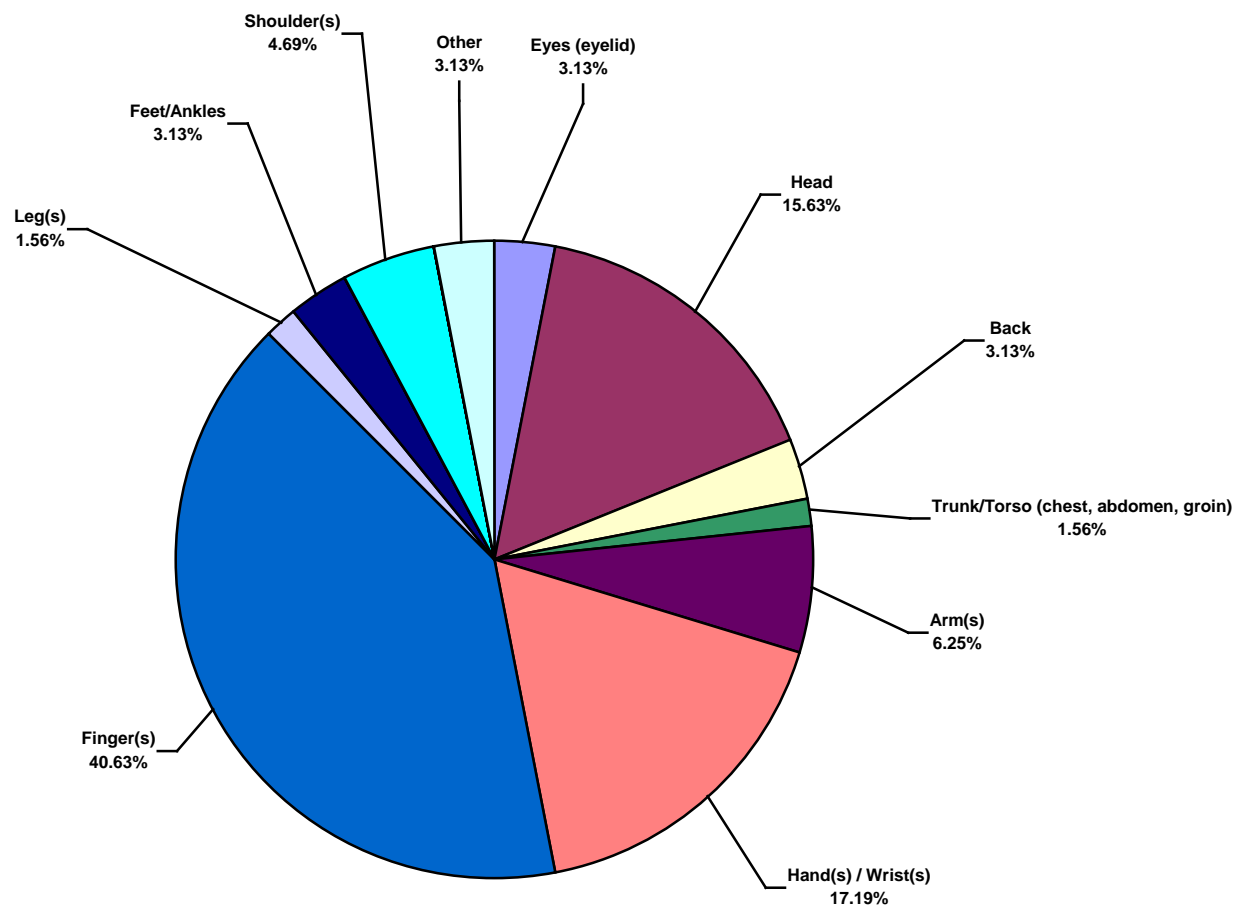
South America Water Total Recordable Incidents by Occupation (Chart 4)
Based on 64 Incidents



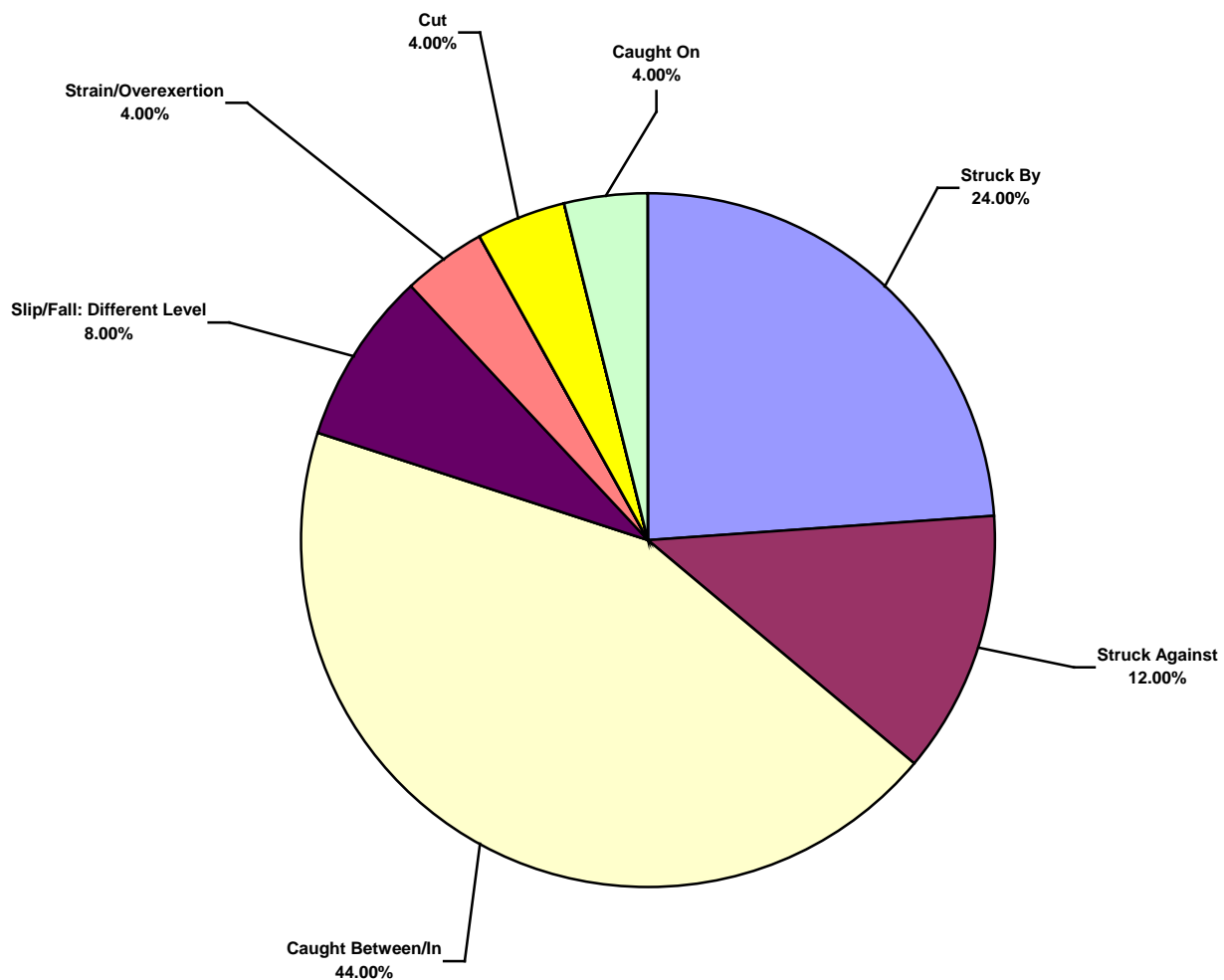
South America Water Total Lost Time Incidents by Body Part (Chart 5)
Based on 25 Incidents



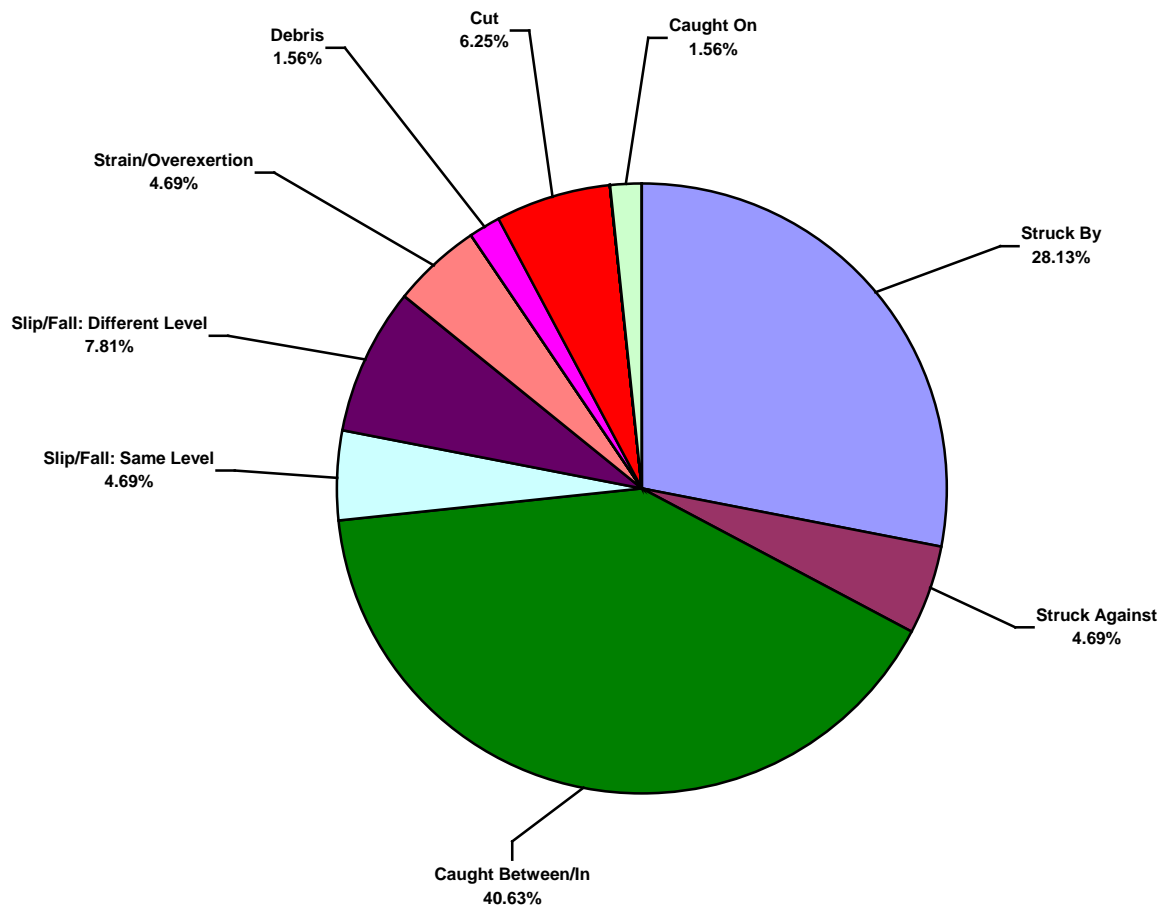
South America Water Total Recordable Incidents by Body Part (Chart 6)
Based on 64 Incidents



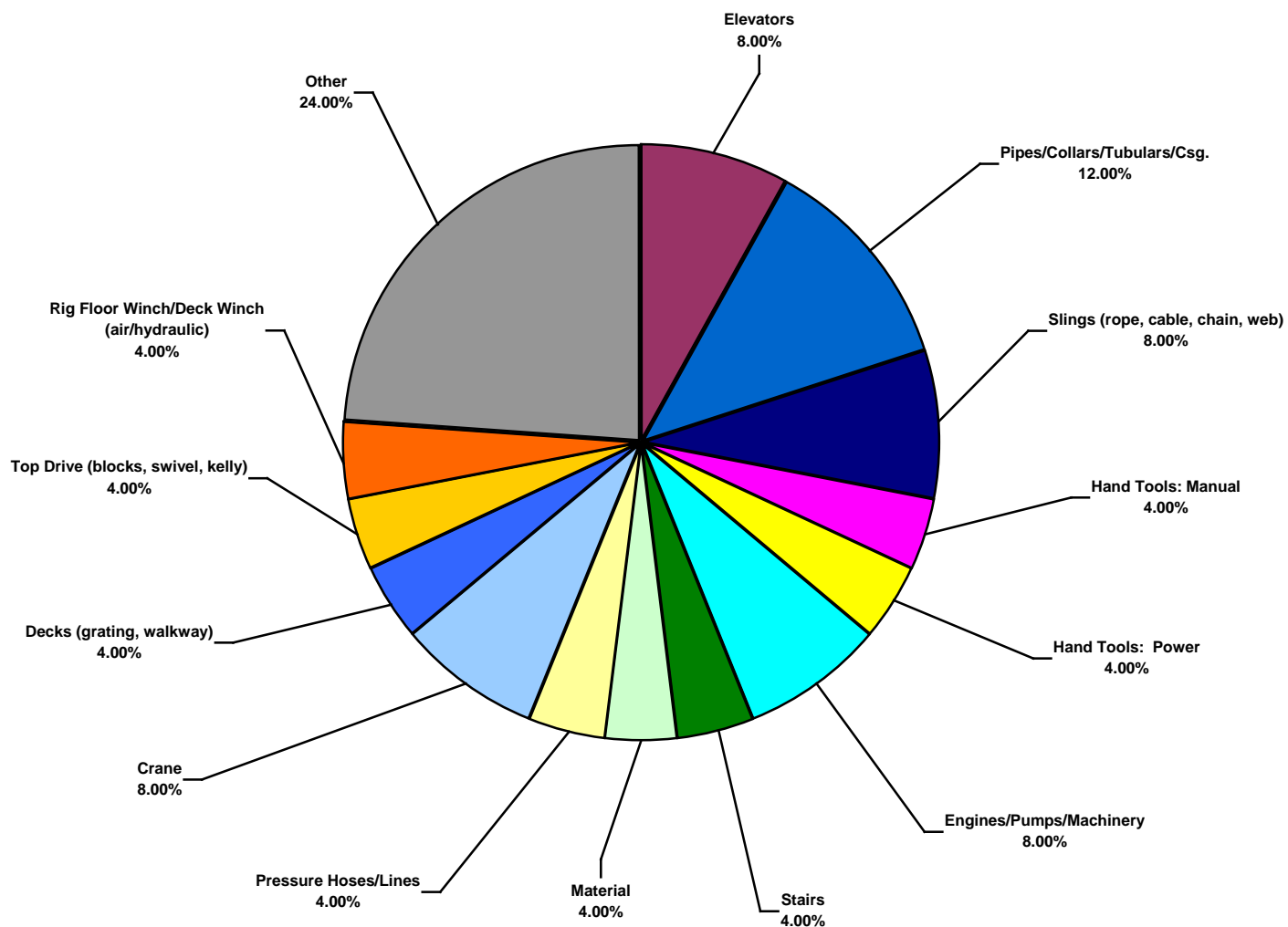
South America Water Total Lost Time Incidents by Incident Type (Chart 7)
Based on 25 Incidents



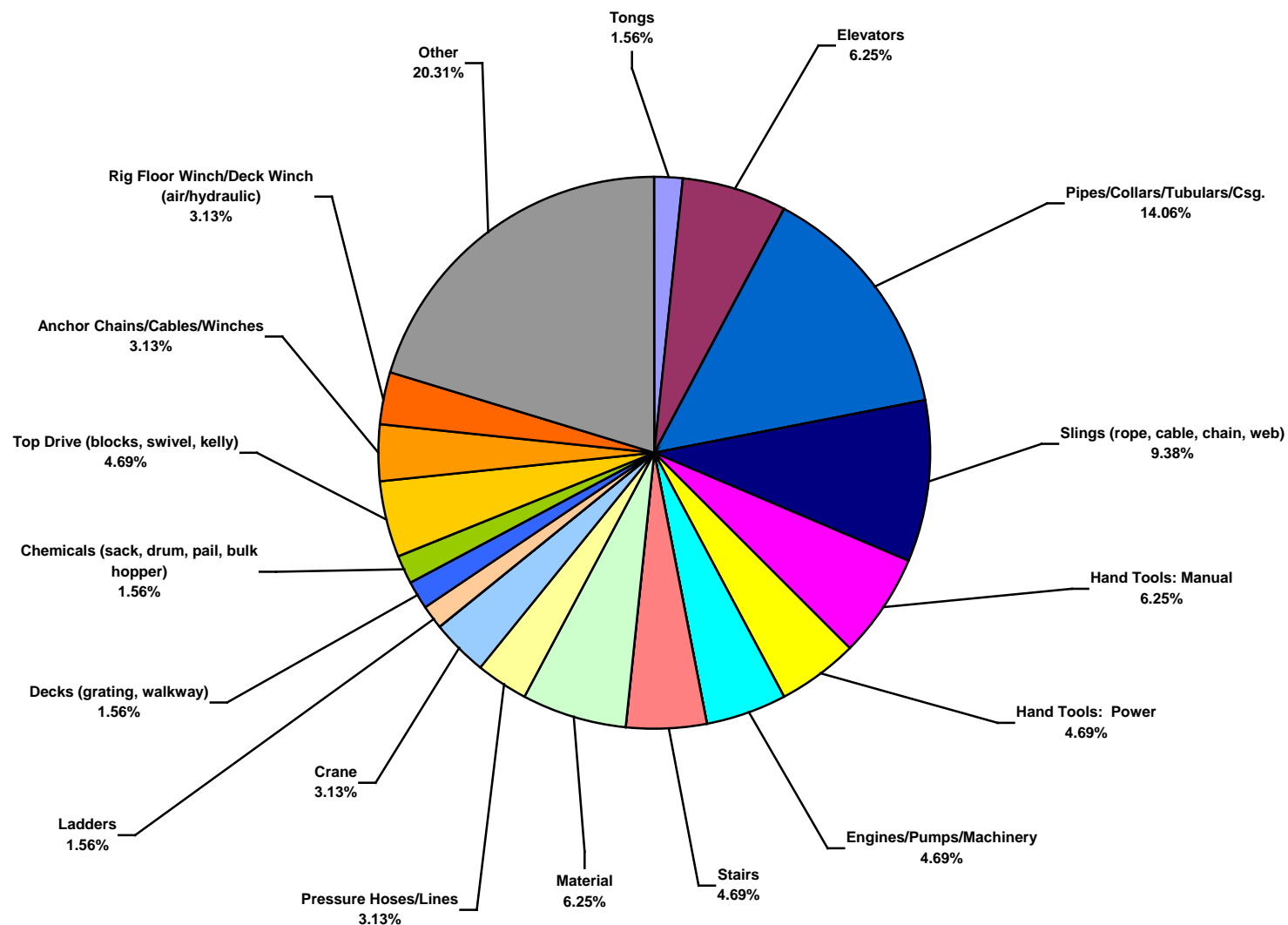
South America Water Total Recordable Incidents by Incident Type (Chart 8)
Based on 64 Incidents



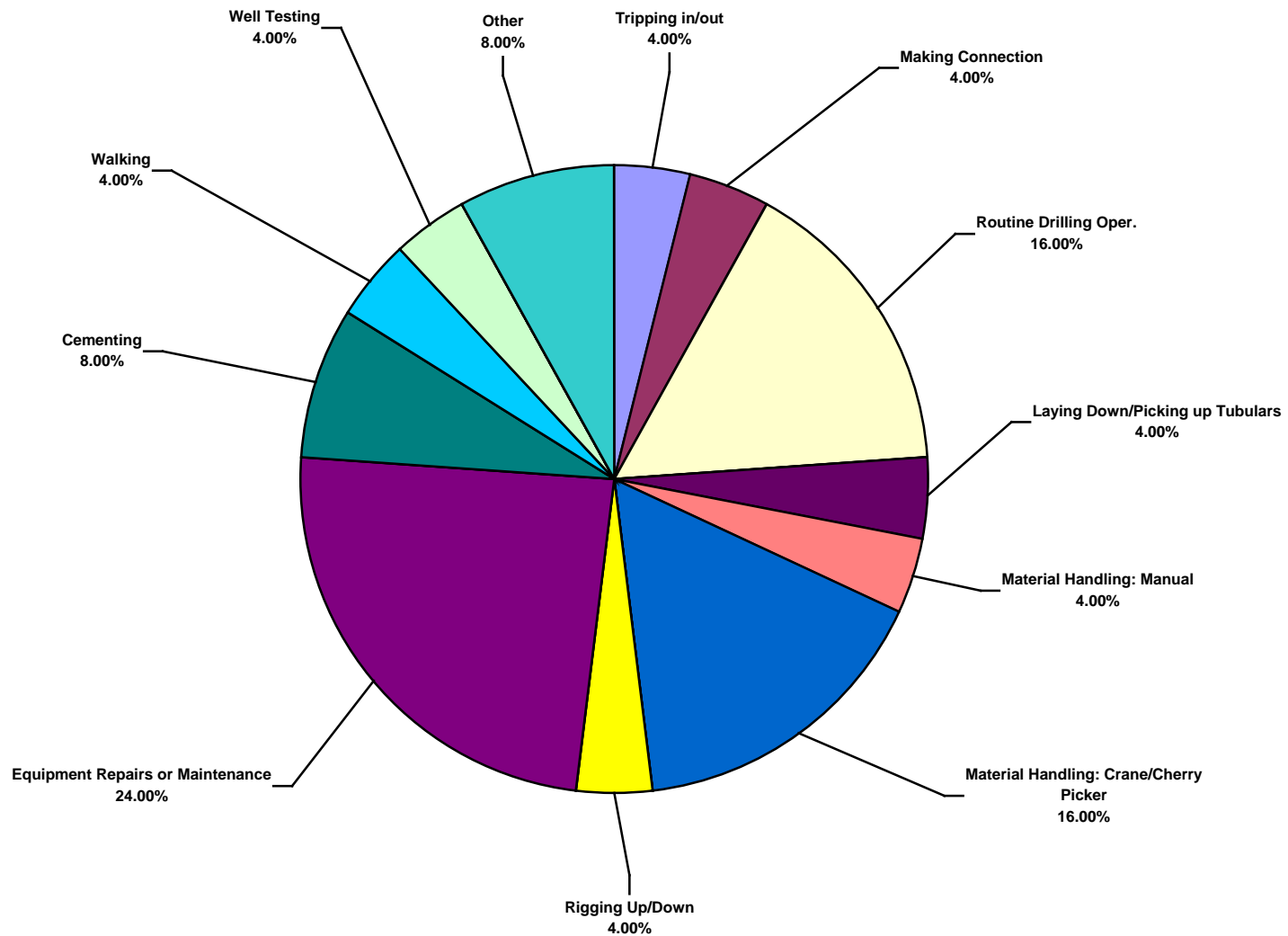
South America Water Total Lost Time Incidents by Equipment (Chart 9)
Based on 25 Incidents



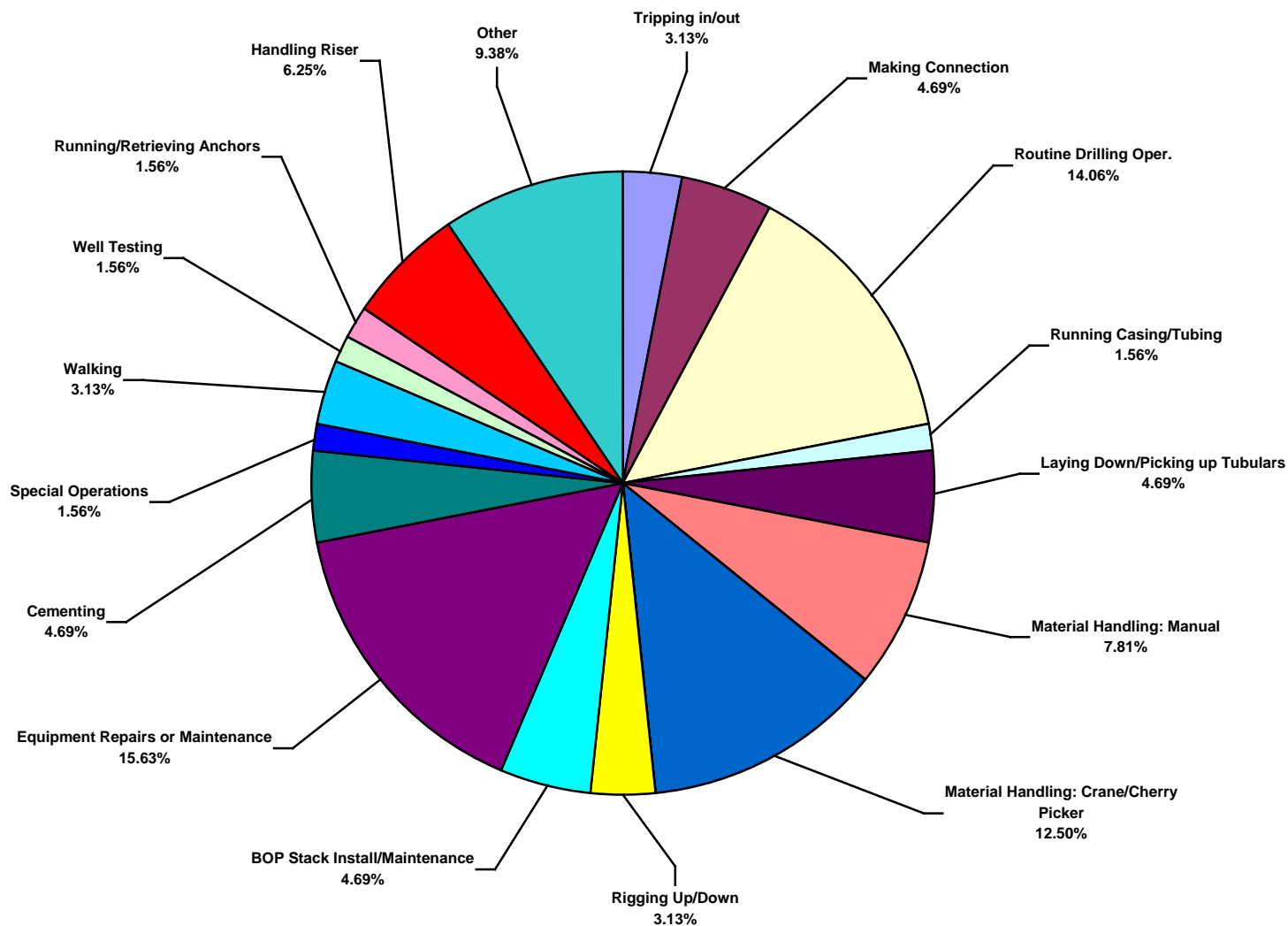
South America Water Total Recordable Incidents by Equipment (Chart 10)
Based on 64 Incidents



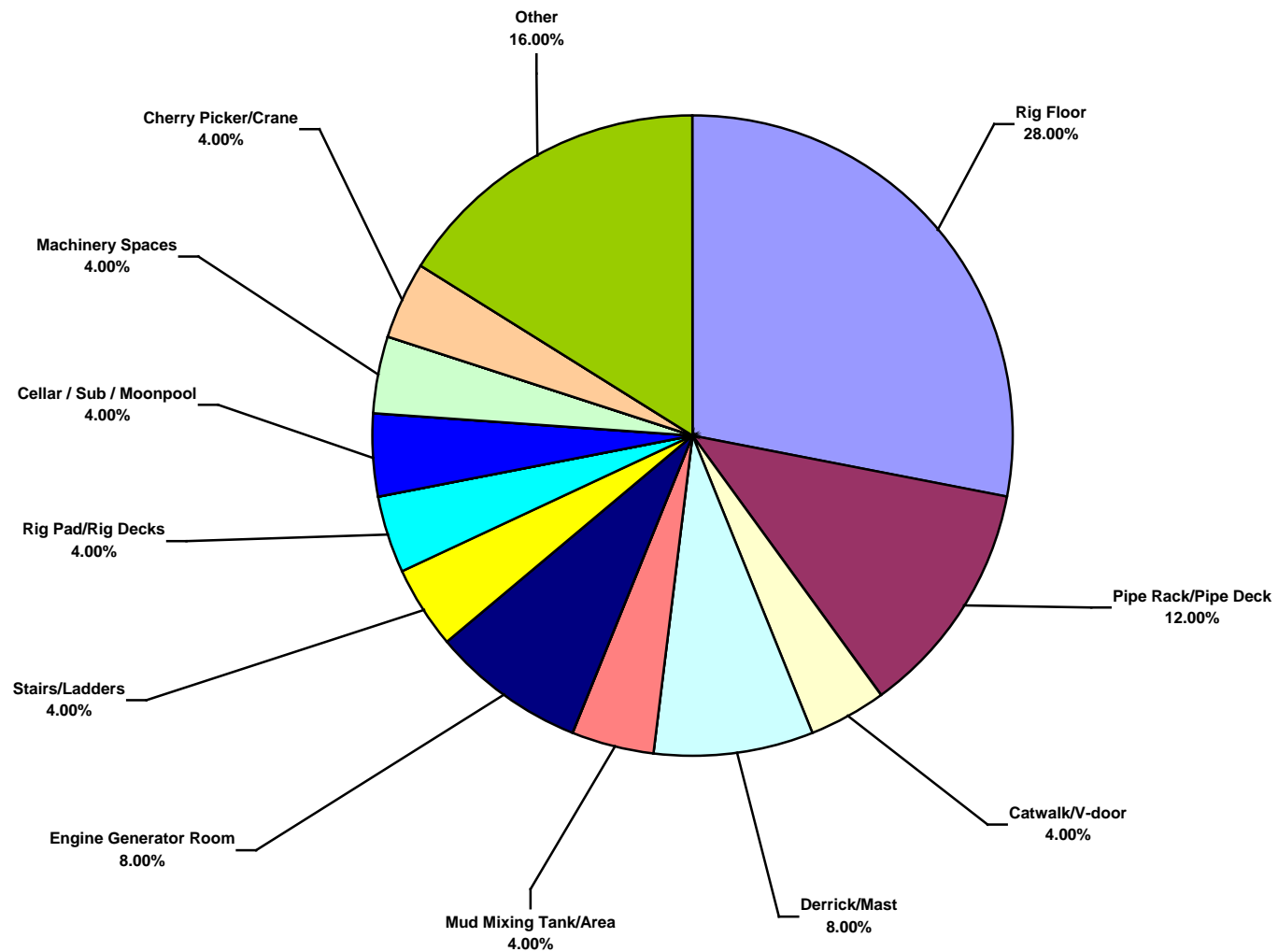
South America Water Total Lost Time Incidents by Operation (Chart 11)
Based on 25 Incidents



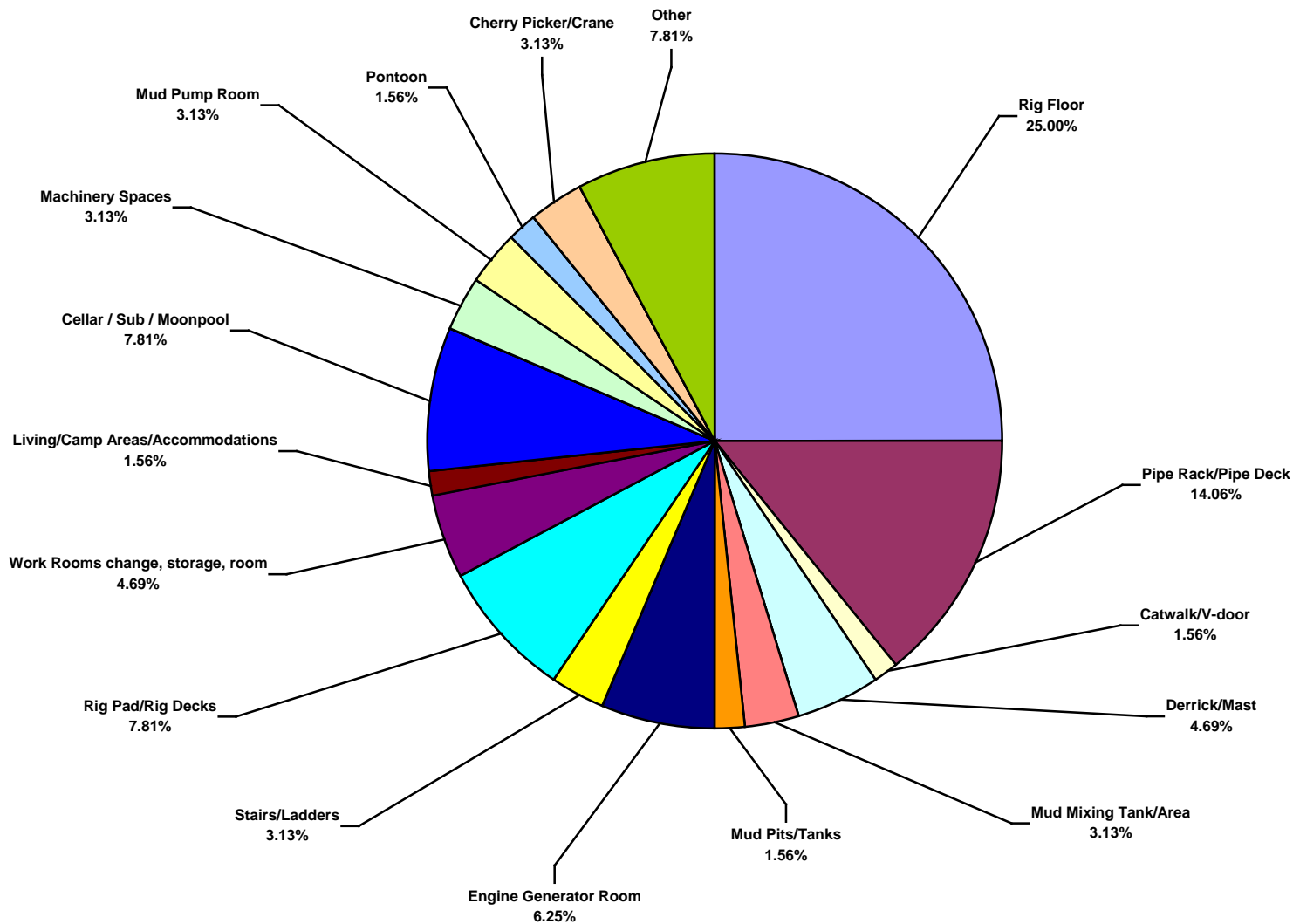
South America Water Total Recordable Incidents by Operation (Chart 12)
Based on 64 Incidents



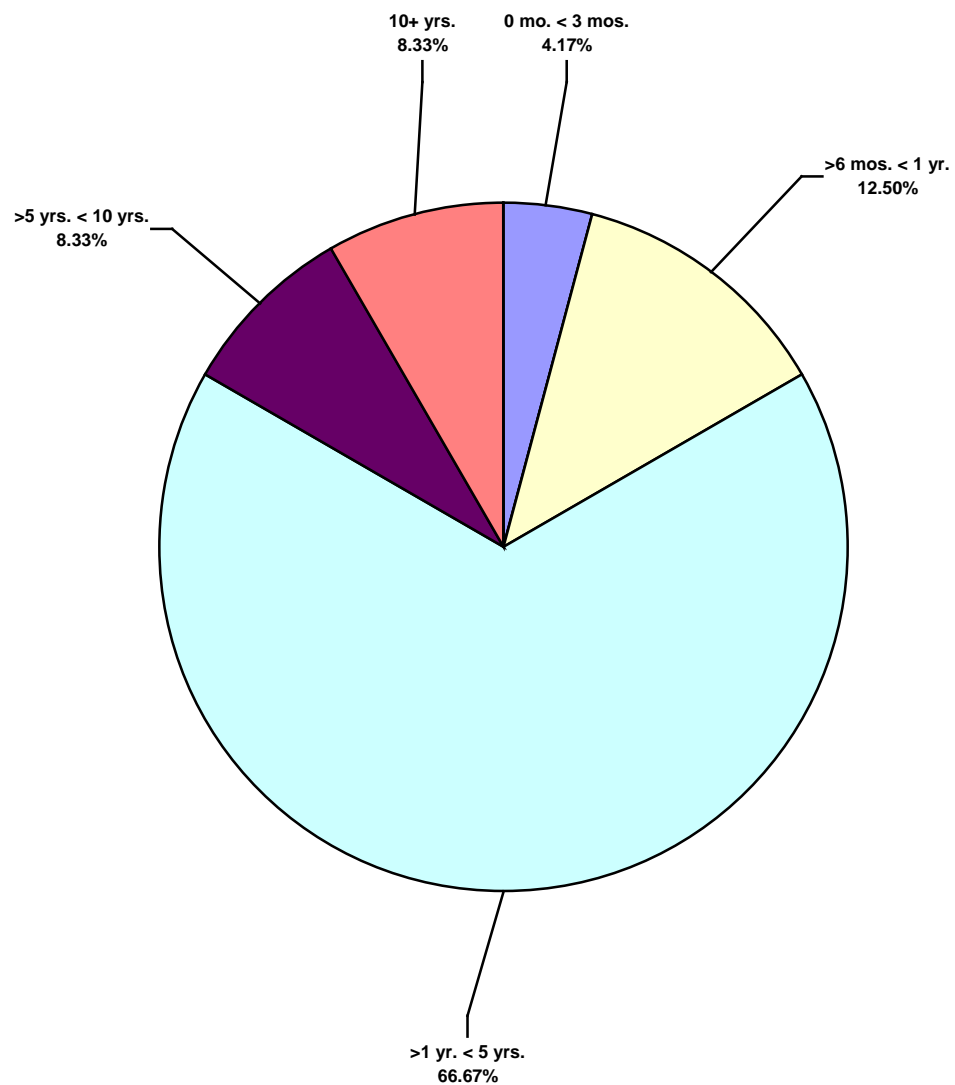
South America Water Total Lost Time Incidents by Location (Chart 13)
Based on 25 Incidents



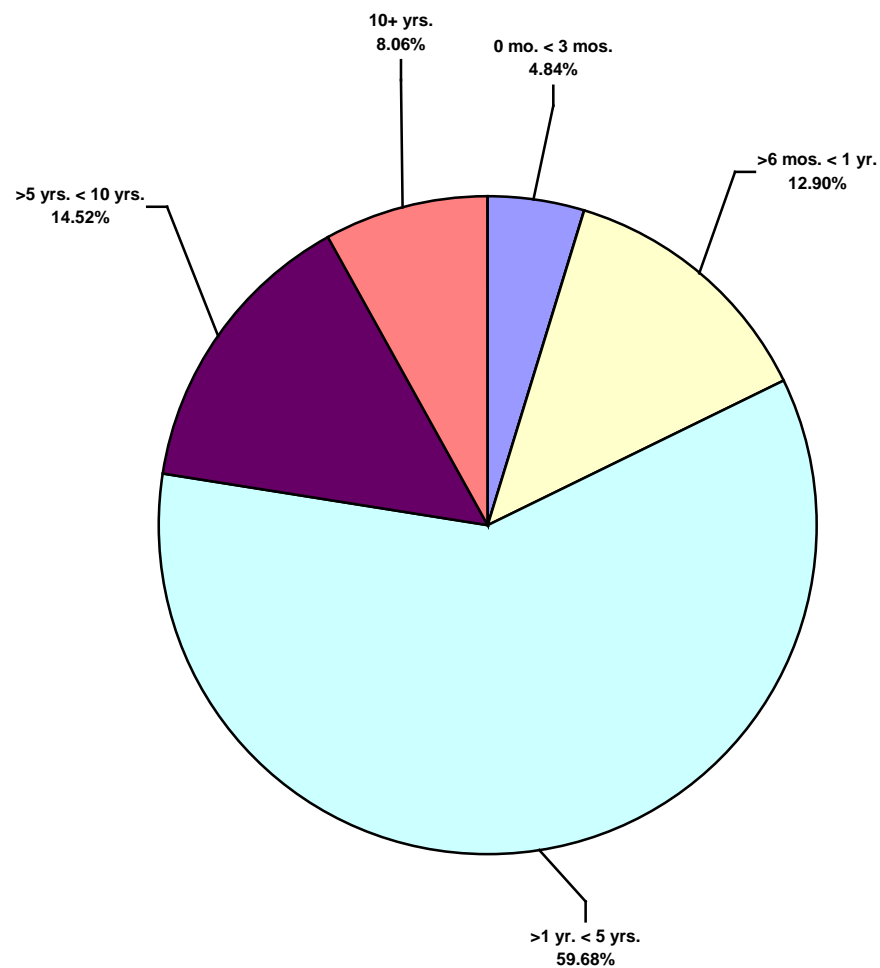
South America Water Total Recordable Incidents by Location (Chart 14)
Based on 64 Incidents



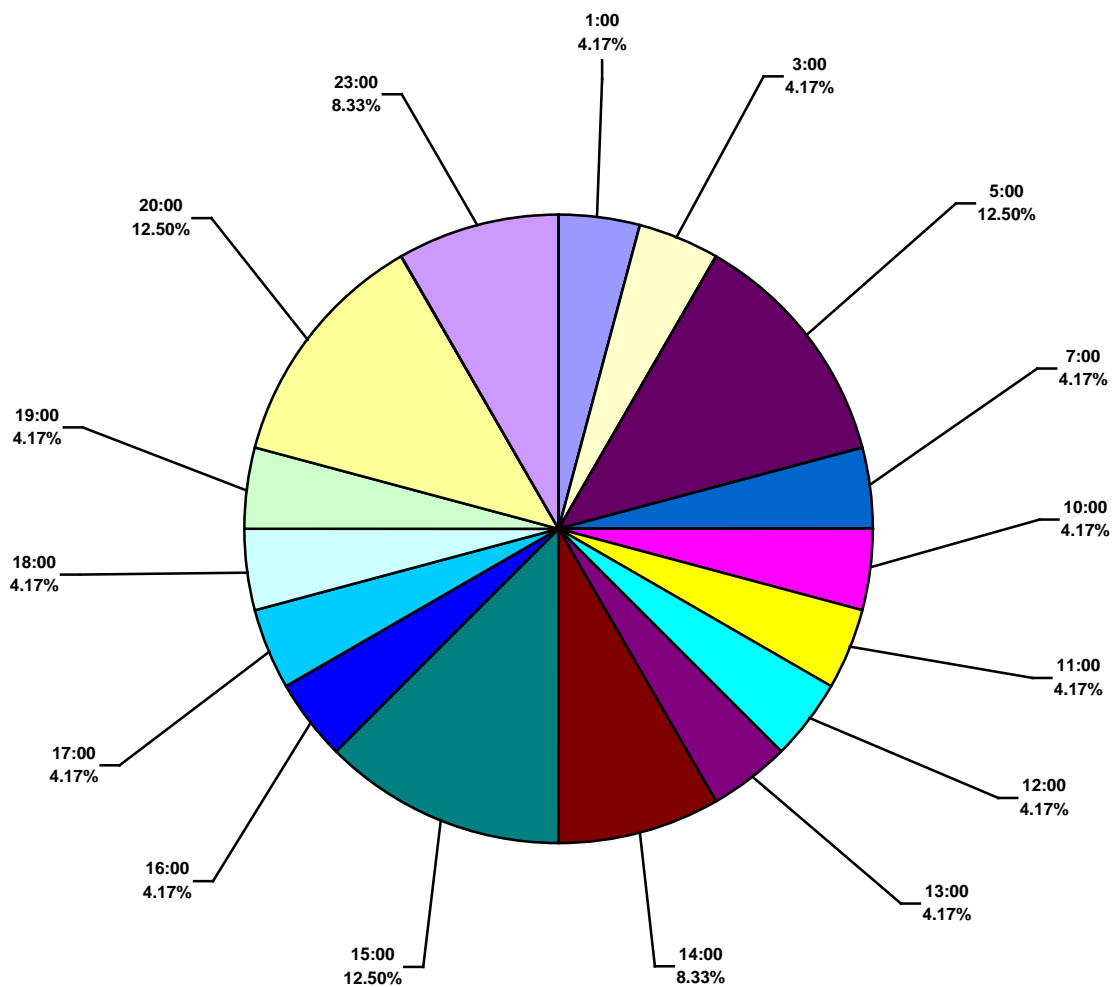
South America Water Total Lost Time Incidents by Time in Service (Chart 15)
Based on 24 Incidents



South America Water Total Recordable Incidents by Time in Service (Chart 16)
Based on 62 Incidents



South America Water Total Lost Time Incidents by Time of Day (Chart 17)
Based on 24 Incidents



South America Water Total Recordable Incidents by Time of Day (Chart 18)
Based on 63 Incidents

