



**IADC**

**IADC  
ISP PROGRAM**

**2013**



**Summary of Occupational  
Incidents  
(Middle East Water Totals)**

*Issued 20 May 2014*

# Table of Contents

(Table of Contents is Hyperlinked, Just click on Topic & go)

IADC 2013 MIDDLE EAST WATER TOTALS (TABLE 1).....	1
<i>Middle East Water Total Incidence Rates vs Man-hours (Figure 1)</i> .....	1
IADC 2013 MIDDLE EAST WATER CHARTS .....	2
<i>Middle East Water Total Lost Time Incidents by Month (Chart 1)</i> .....	2
<i>Middle East Water Total Recordable Incidents by Month (Chart 2)</i> .....	3
<i>Middle East Water Total Lost Time Incidents by Occupation (Chart 3)</i> .....	4
<i>Middle East Water Total Recordable Incidents by Occupation (Chart 4)</i> .....	5
<i>Middle East Water Total Lost Time Incidents by Body Part (Chart 5)</i> .....	6
<i>Middle East Water Total Recordable Incidents by Body Part (Chart 6)</i> .....	7
<i>Middle East Water Total Lost Time Incidents by Incident Type (Chart 7)</i> .....	8
<i>Middle East Water Total Recordable Incidents by Incident Type (Chart 8)</i> .....	9
<i>Middle East Water Total Lost Time Incidents by Equipment (Chart 9)</i> .....	10
<i>Middle East Water Total Recordable Incidents by Equipment (Chart 10)</i> .....	11
<i>Middle East Water Total Lost Time Incidents by Operation (Chart 11)</i> .....	12
<i>Middle East Water Total Recordable Incidents by Operation (Chart 12)</i> .....	13
<i>Middle East Water Total Lost Time Incidents by Location (Chart 13)</i> .....	14
<i>Middle East Water Total Recordable Incidents by Location (Chart 14)</i> .....	15
<i>Middle East Water Total Lost Time Incidents by Time in Service (Chart 15)</i> .....	16
<i>Middle East Water Total Recordable Incidents by Time in Service (Chart 16)</i> .....	17
<i>Middle East Water Total Lost Time Incidents by Time of Day (Chart 17)</i> .....	18
<i>Middle East Water Total Recordable Incidents by Time of Day (Chart 18)</i> .....	19

## IADC 2013 Middle East Water Totals (Table 1)

	<u>Total</u>
Total Man-hours	35,468,581
Total Medical Treatment Incidents	13
Total Restricted Work Incidents	25
Total Lost Time Incidents	13
Total Fatalities	1
Total Recordables	52
MTO Incidence Rate	0.07
RWC Incidence Rate	0.14
LTI Incidence Rate	0.08
LTI Frequency Rate	0.39
DART Incidence Rate	0.22
DART Frequency Rate	1.10
Recordable Incidence Rate	0.29
Recordable Frequency Rate	1.47

Companies Reporting: Water – 17

Medical Treatment Incidence Rate = MTOs X 200,000

Restricted Work Incidence Rate = RWCs X 200,000

Lost Time Incidence Rate = LTIs + FTLs X 200,000

DART Incidence Rate = LTIs + RWC X 200,000

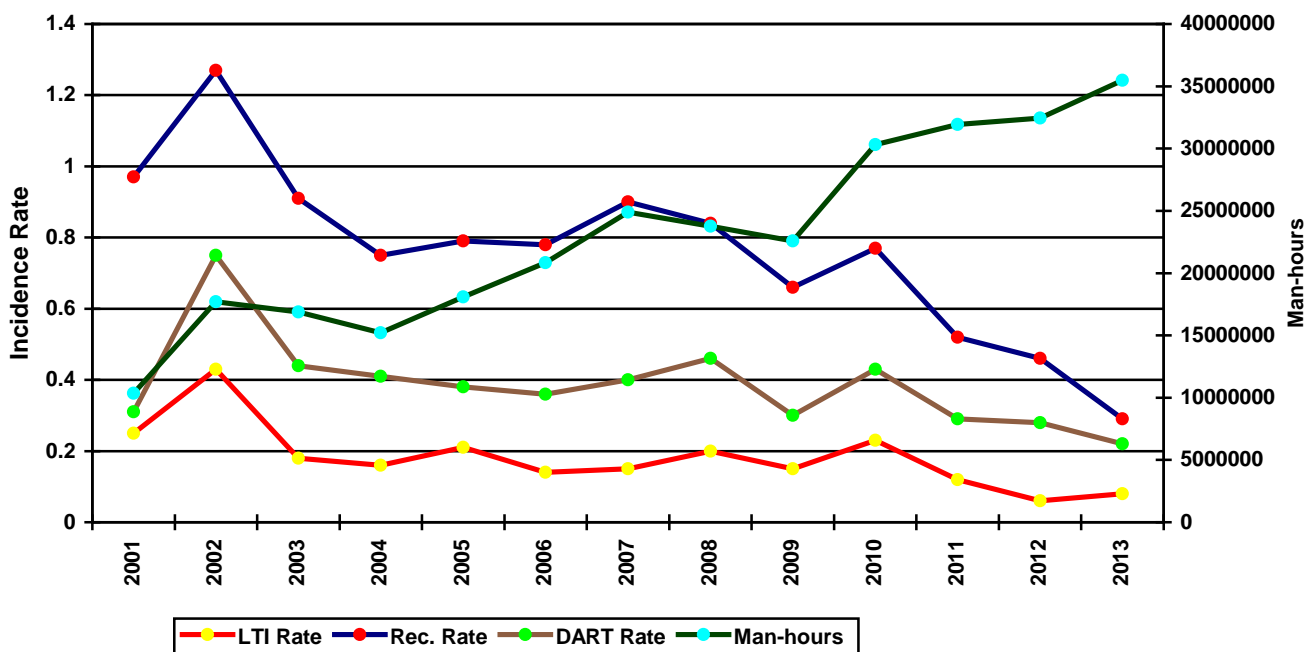
Recordable Incidence Rate = RCRD X 200,000

Lost Time Frequency Rate = LTIs +FTLs X 1,000,000

DART Frequency Rate = LTIs + RWC X 1,000,000

Recordable Frequency Rate = RCRD X 1,000,000

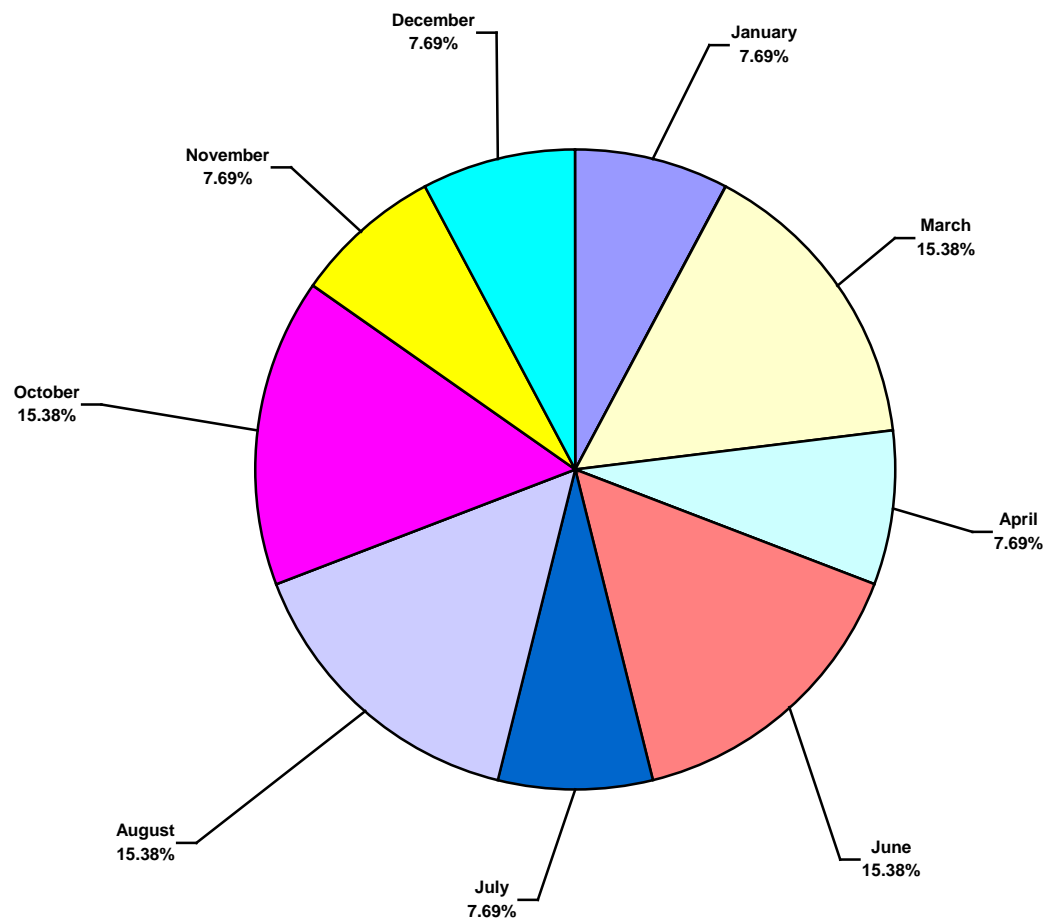
**Middle East Water Total Incidence Rates vs Man-hours (Figure 1)**



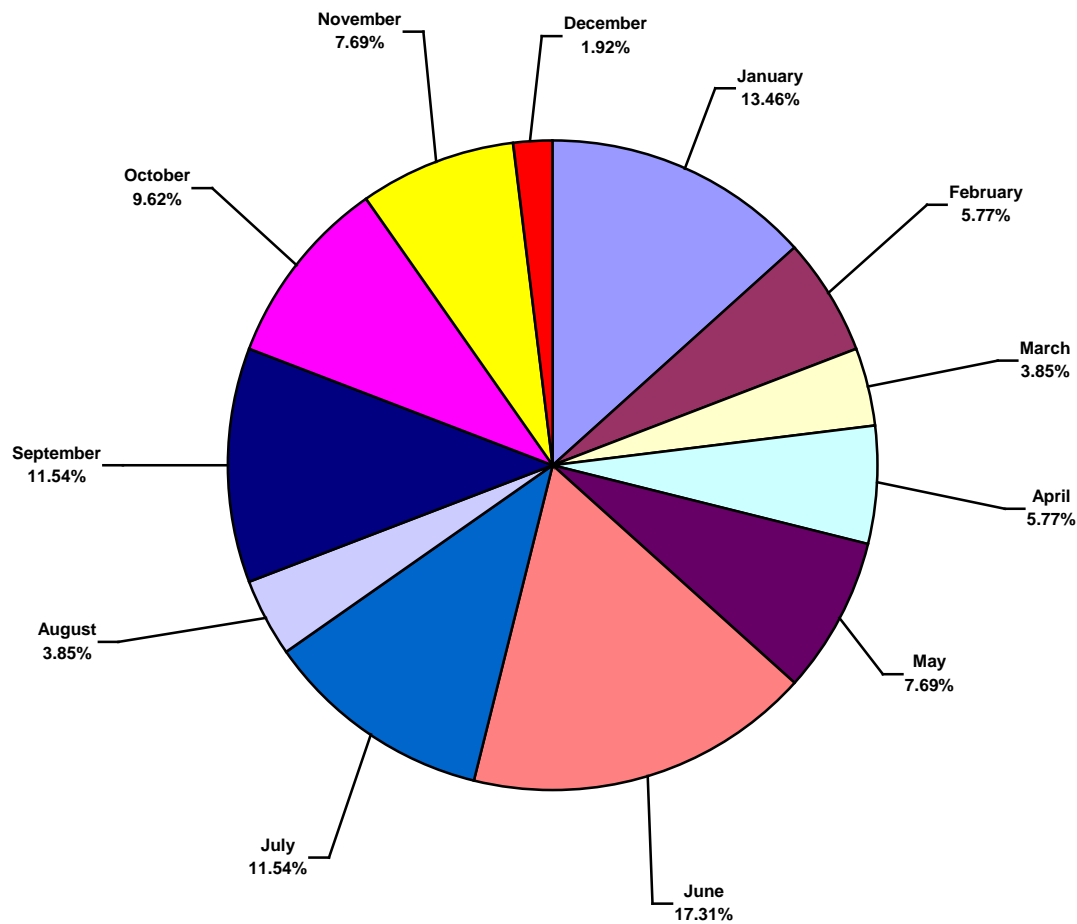
# IADC 2013 Middle East Water Charts

## Middle East Water Total Lost Time Incidents by Month (Chart 1)

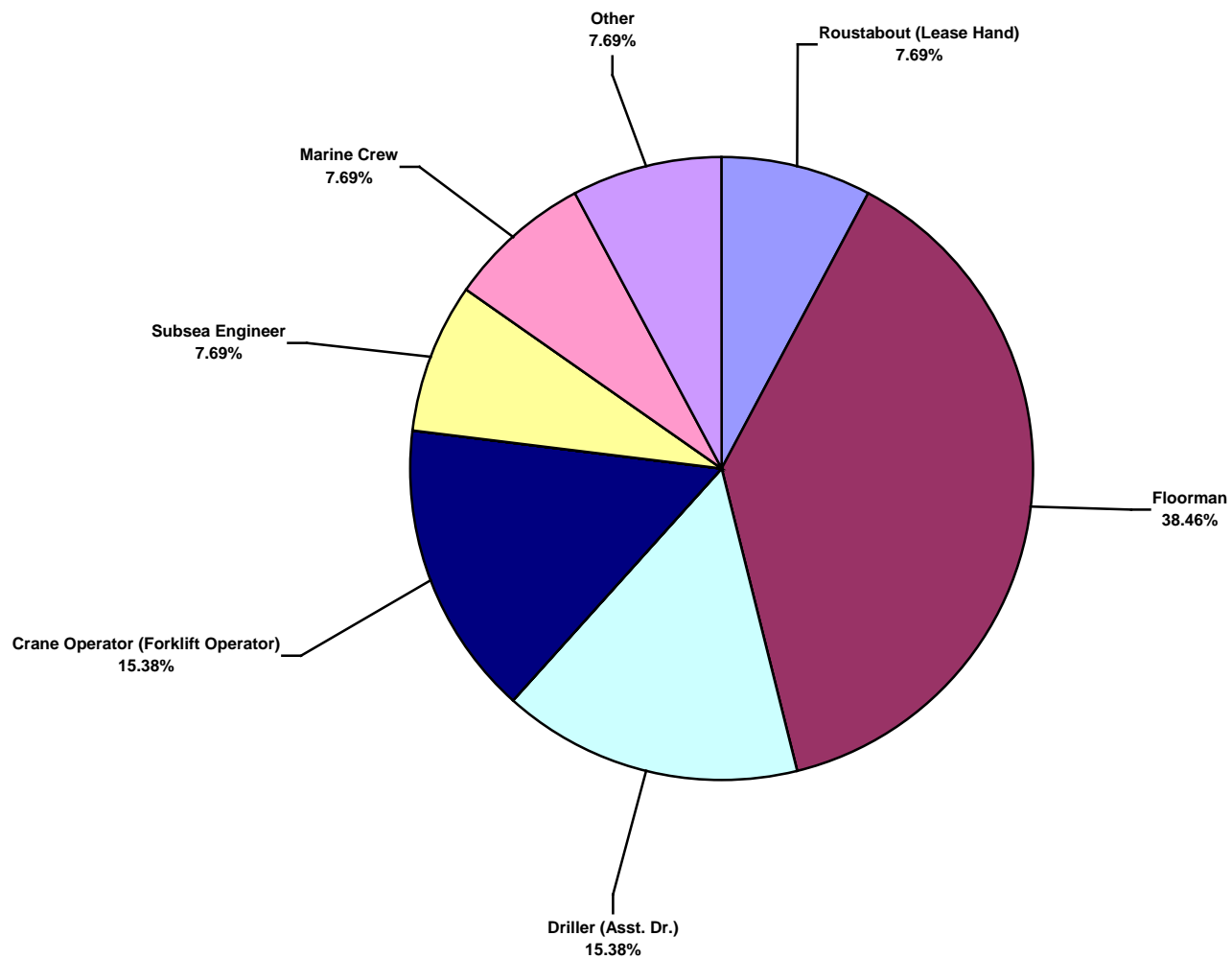
Based on 13 Incidents



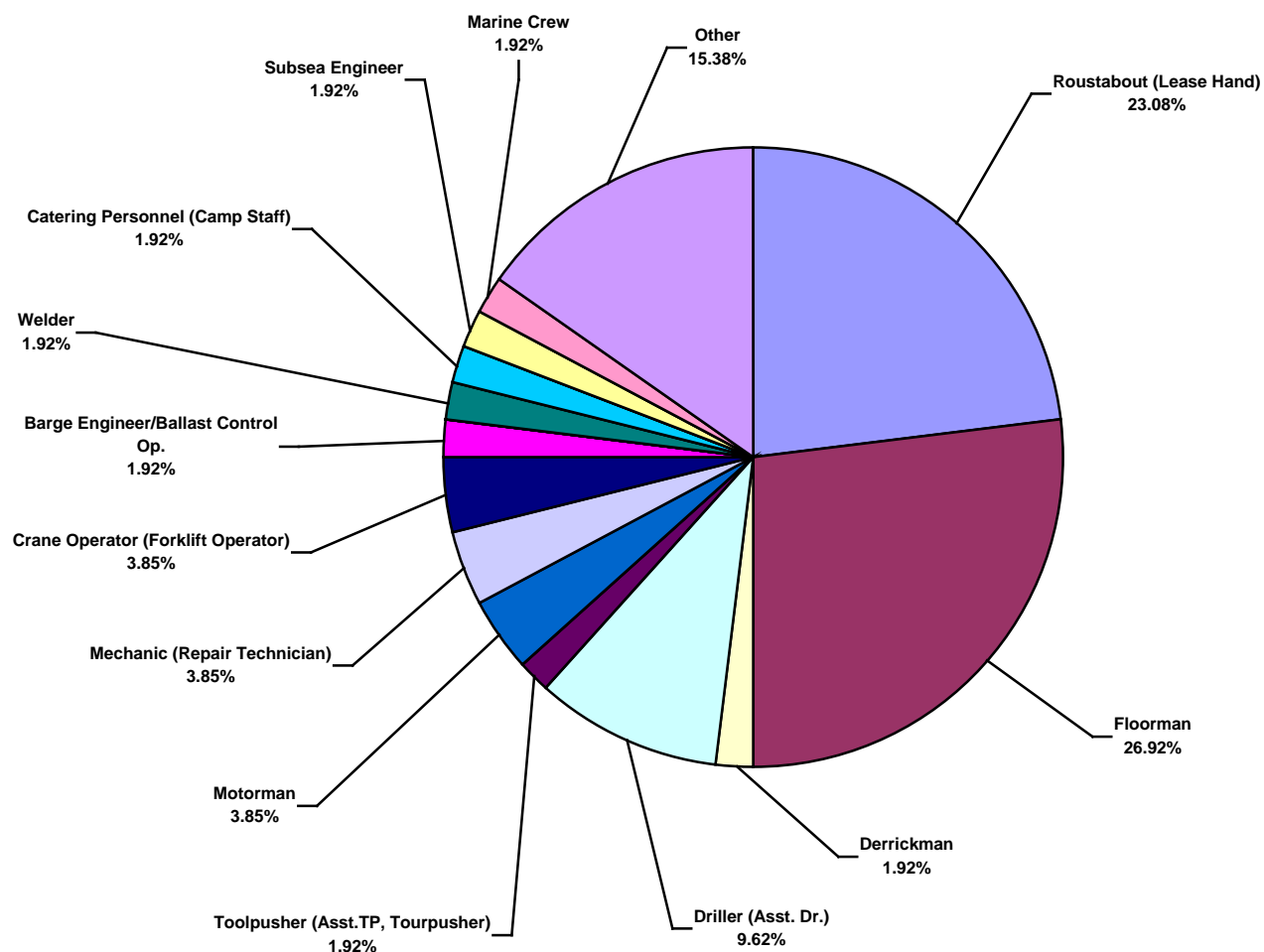
**Middle East Water Total Recordable Incidents by Month (Chart 2)**  
Based on 52 Incidents



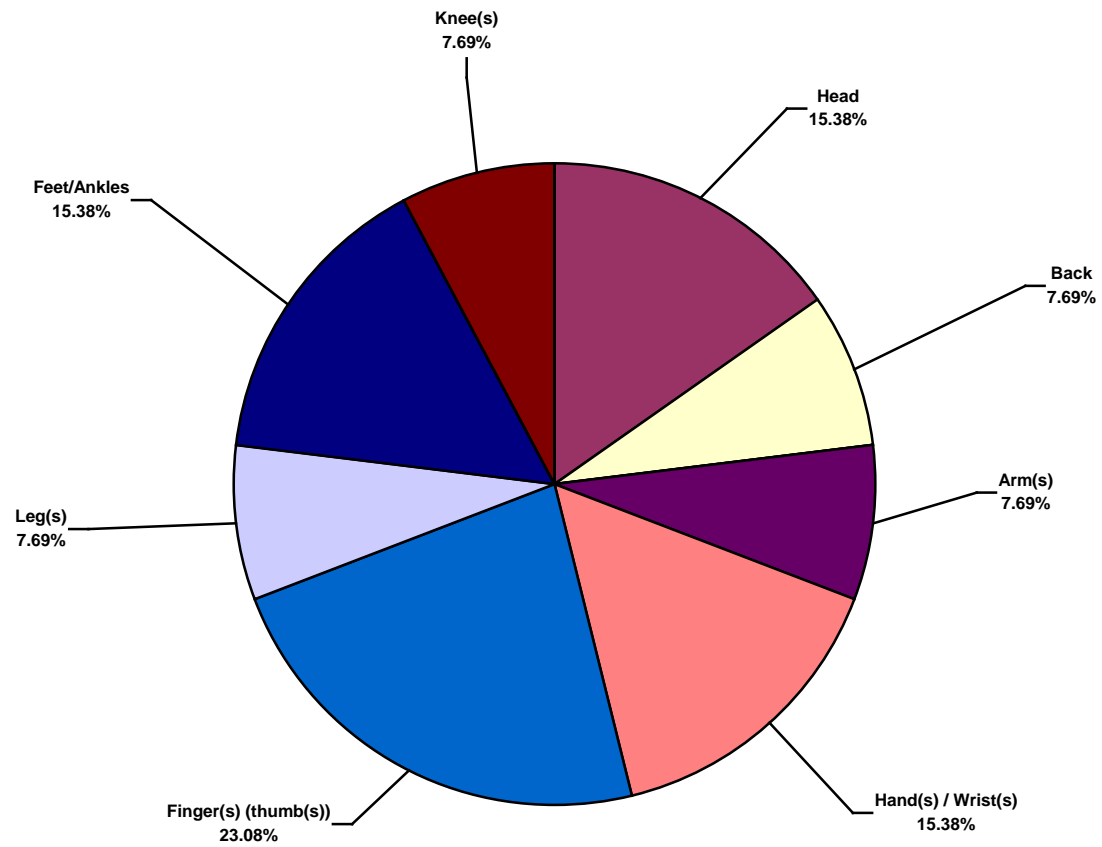
**Middle East Water Total Lost Time Incidents by Occupation (Chart 3)**  
Based on 13 Incidents



**Middle East Water Total Recordable Incidents by Occupation (Chart 4)**  
Based on 52 Incidents

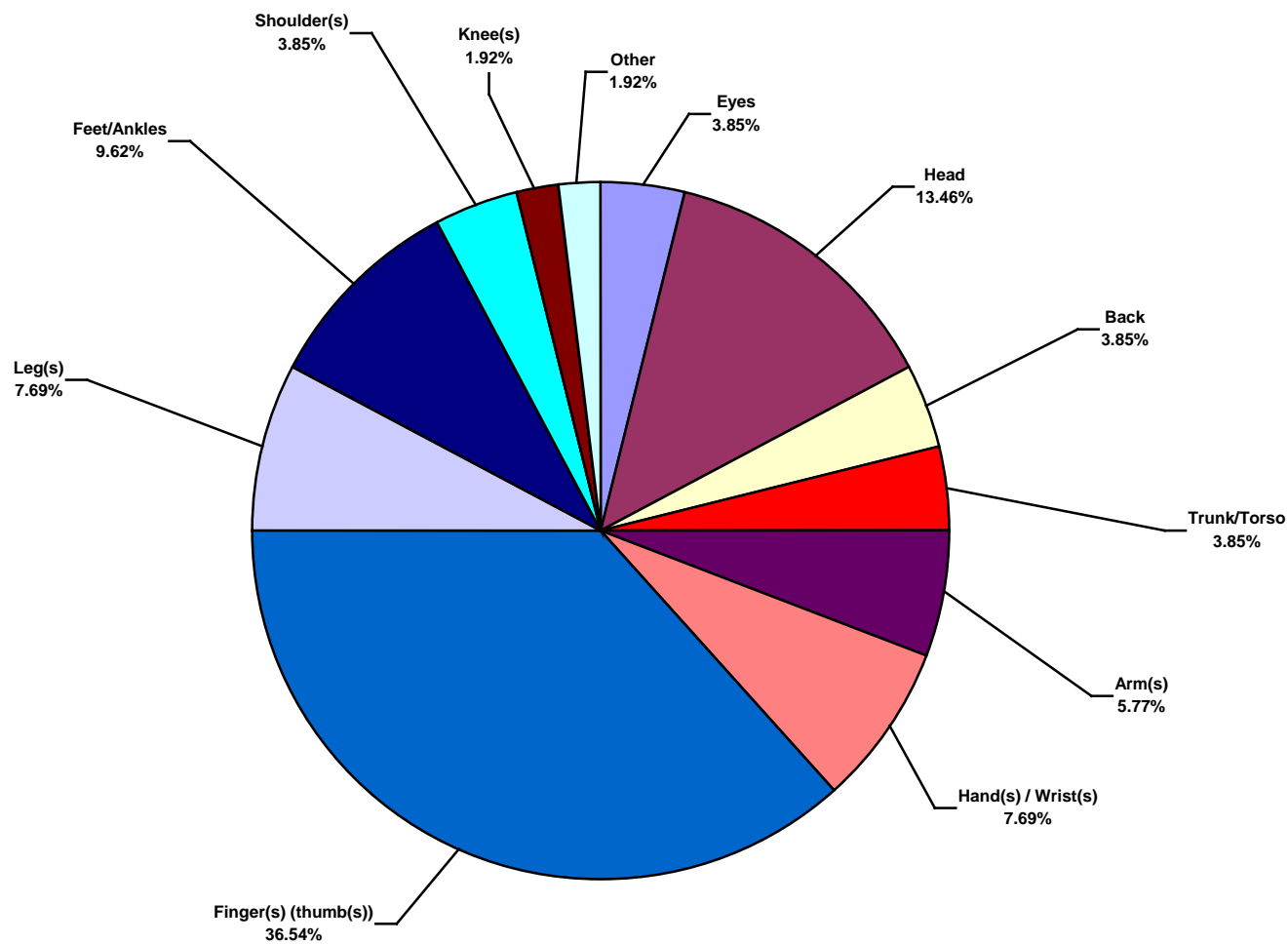


**Middle East Water Total Lost Time Incidents by Body Part (Chart 5)**  
Based on 13 Incidents

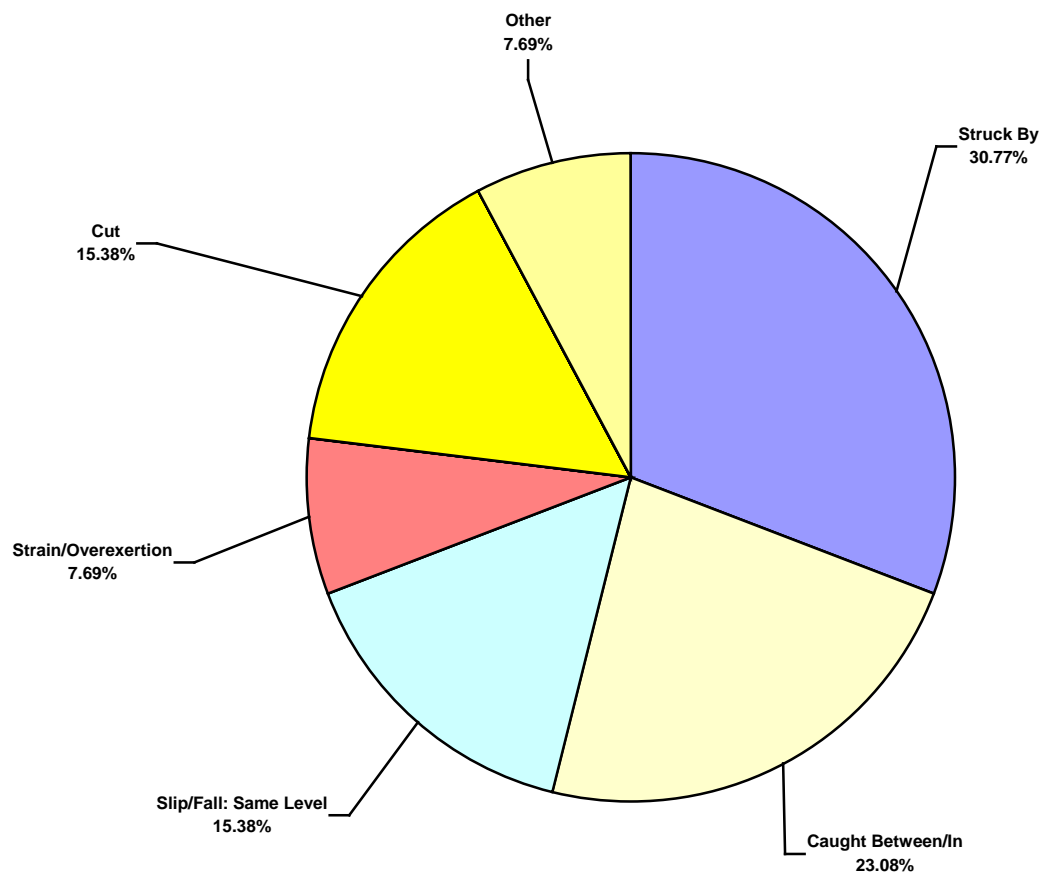




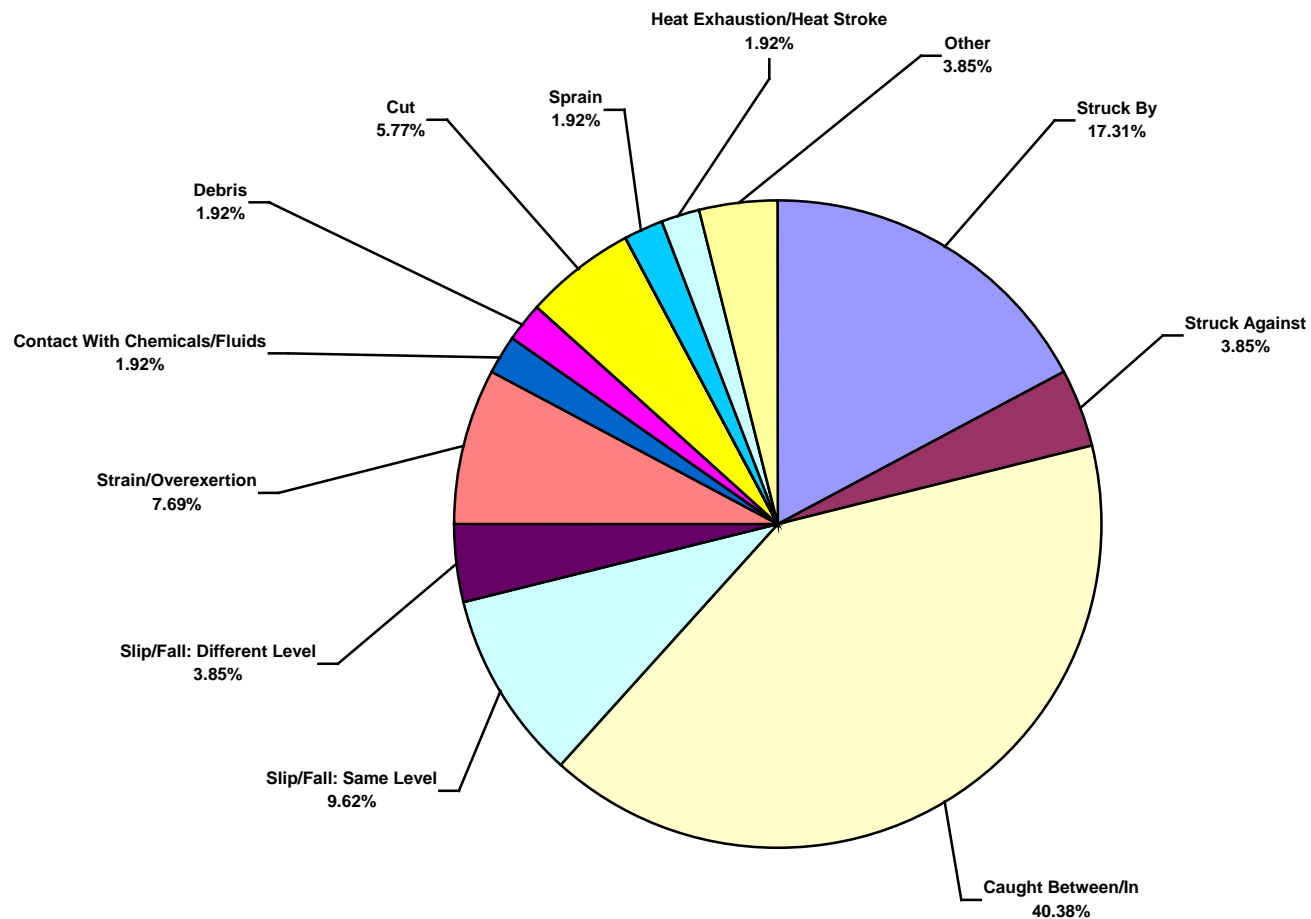
**Middle East Water Total Recordable Incidents by Body Part (Chart 6)**  
Based on 52 incidents



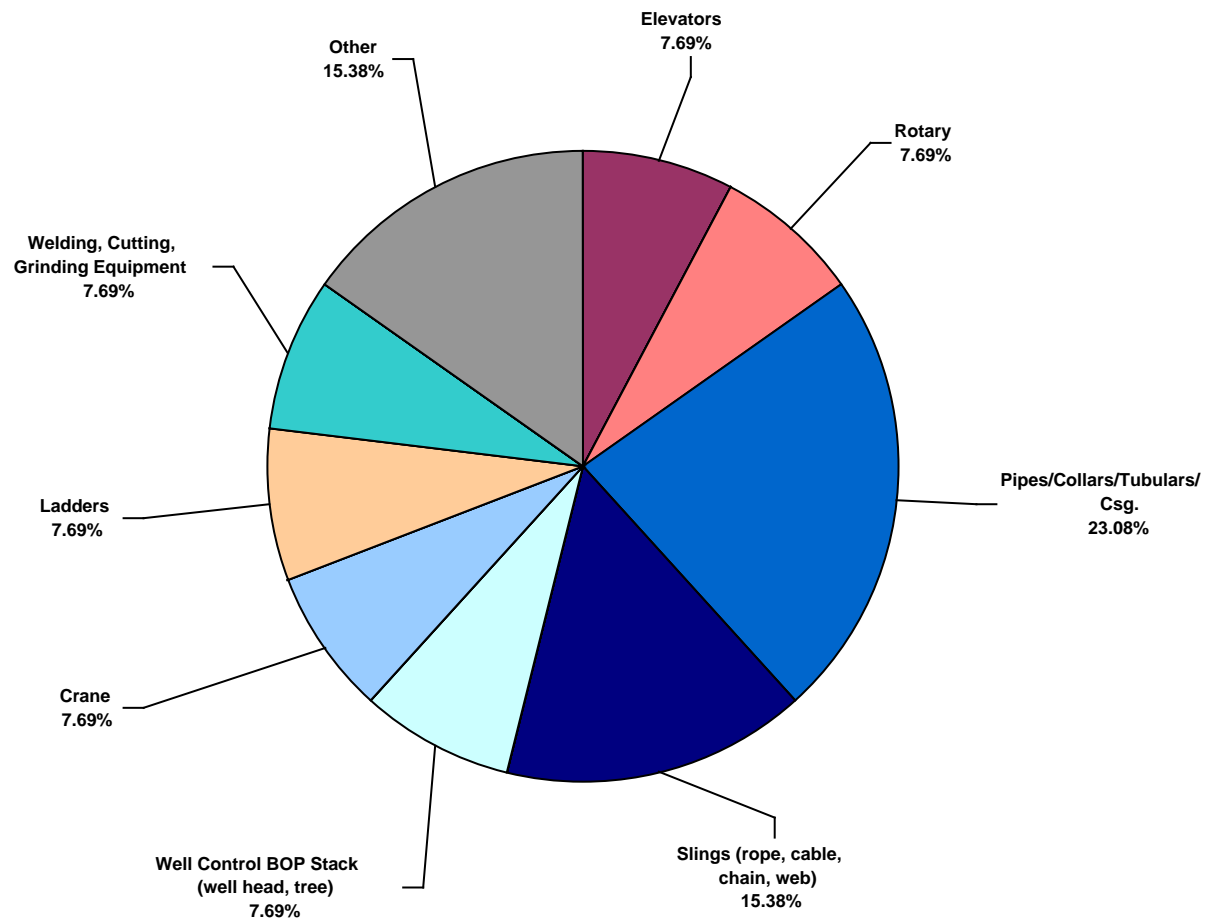
**Middle East Water Total Lost Time Incidents by Incident Type (Chart 7)**  
Based on 13 Incidents



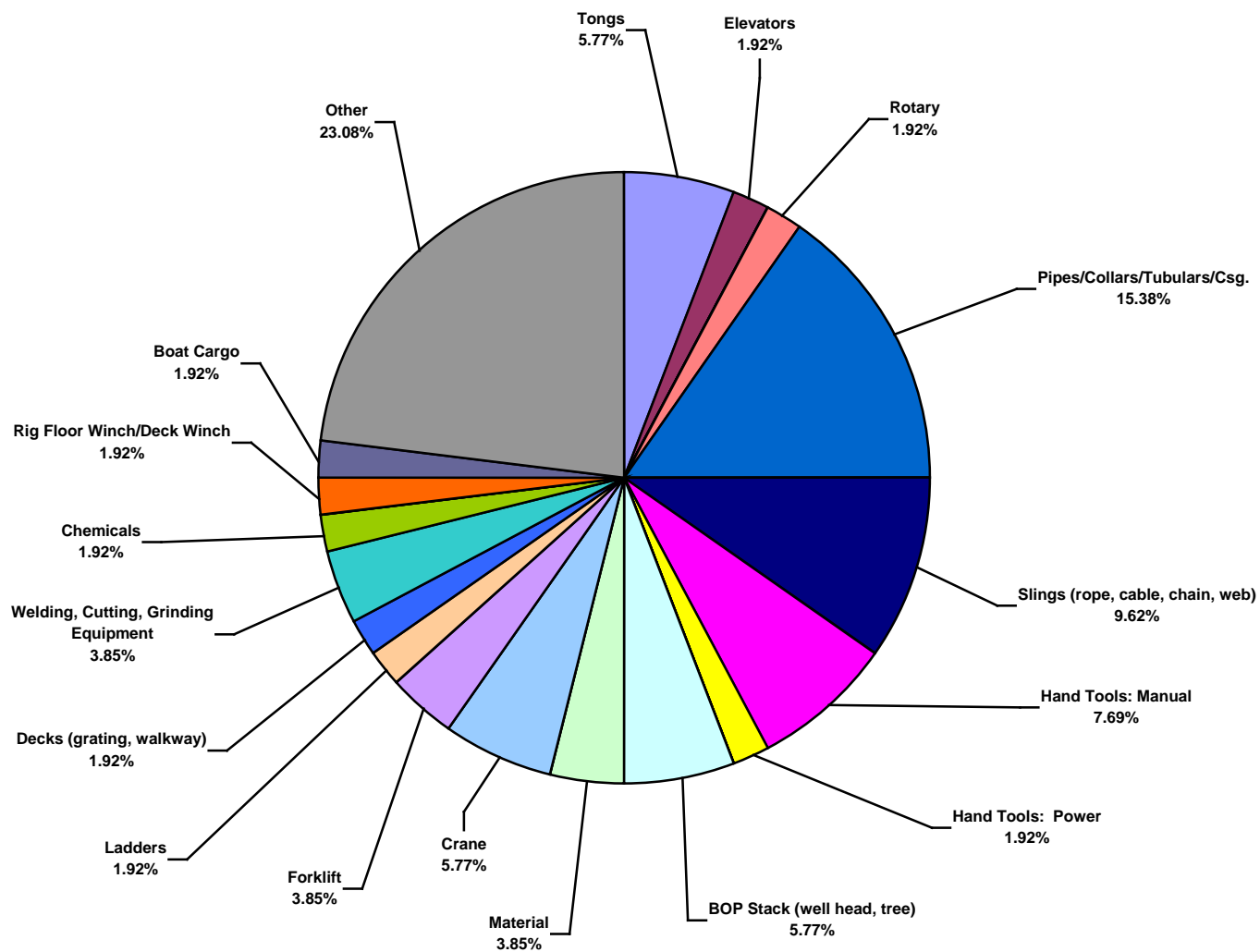
**Middle East Water Total Recordable Incidents by Incident Type (Chart 8)**  
Based on 52 Incidents



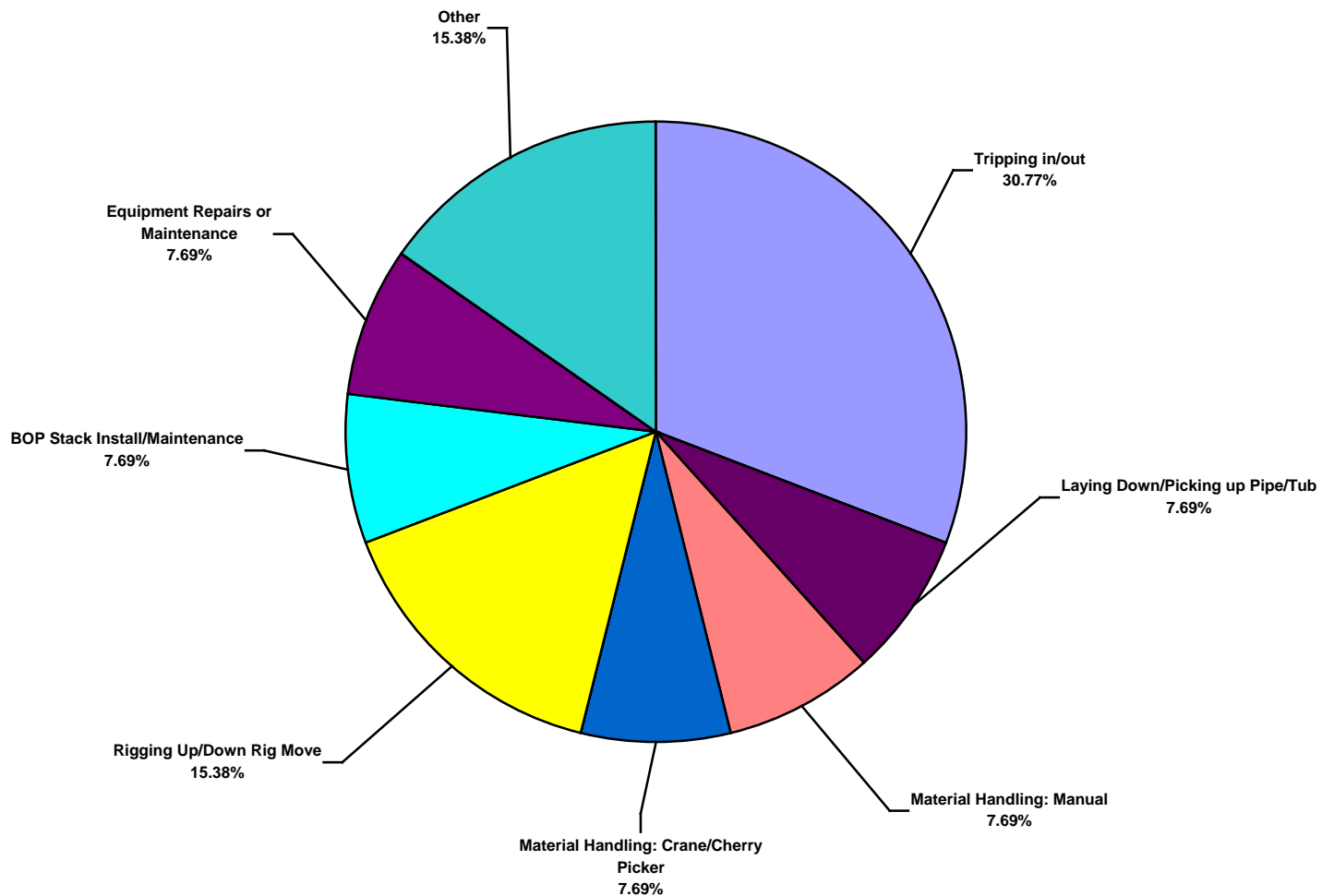
**Middle East Water Total Lost Time Incidents by Equipment (Chart 9)**  
Based on 13 Incidents



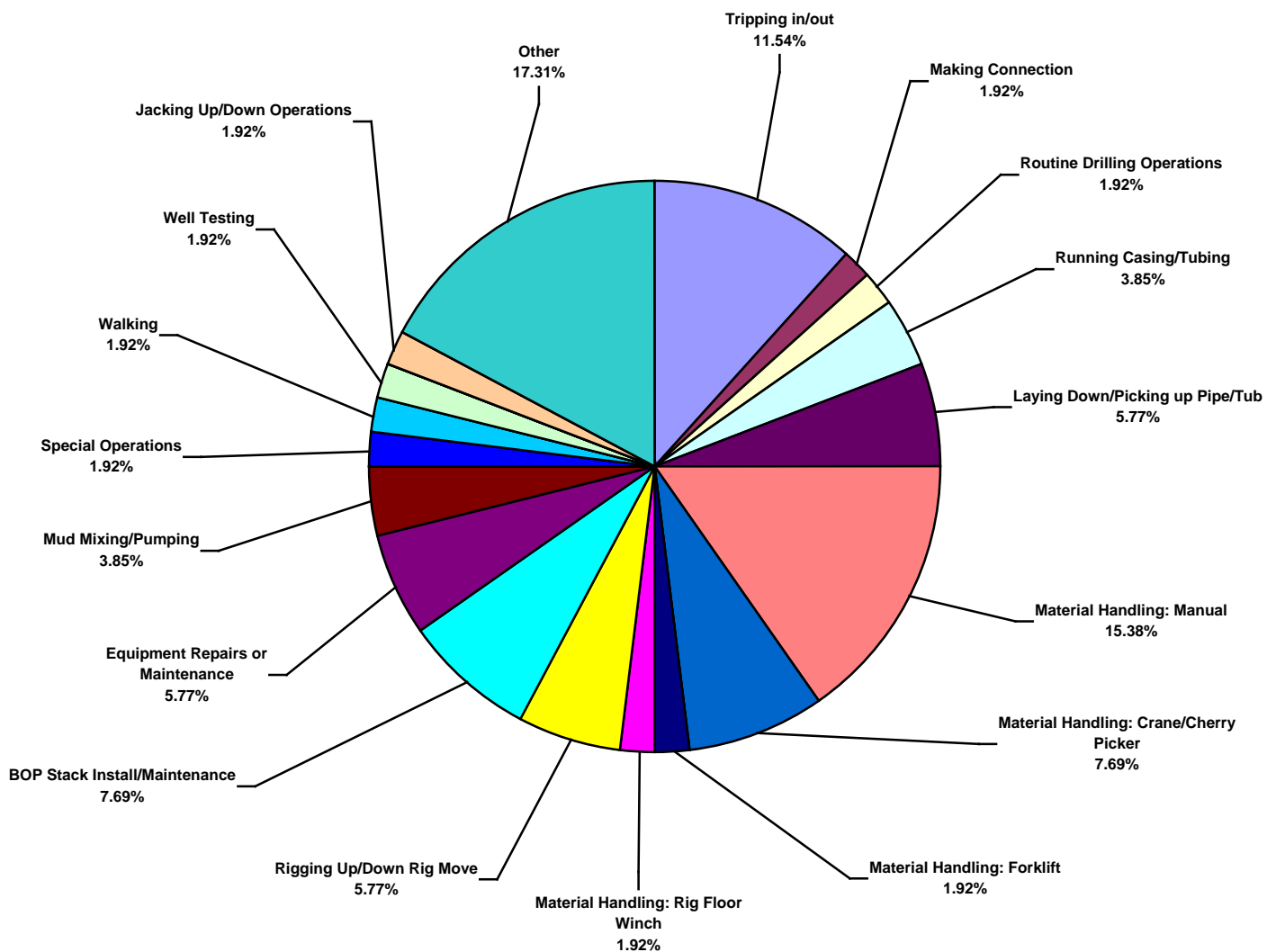
**Middle East Water Total Recordable Incidents by Equipment (Chart 10)**  
Based on 52 Incidents



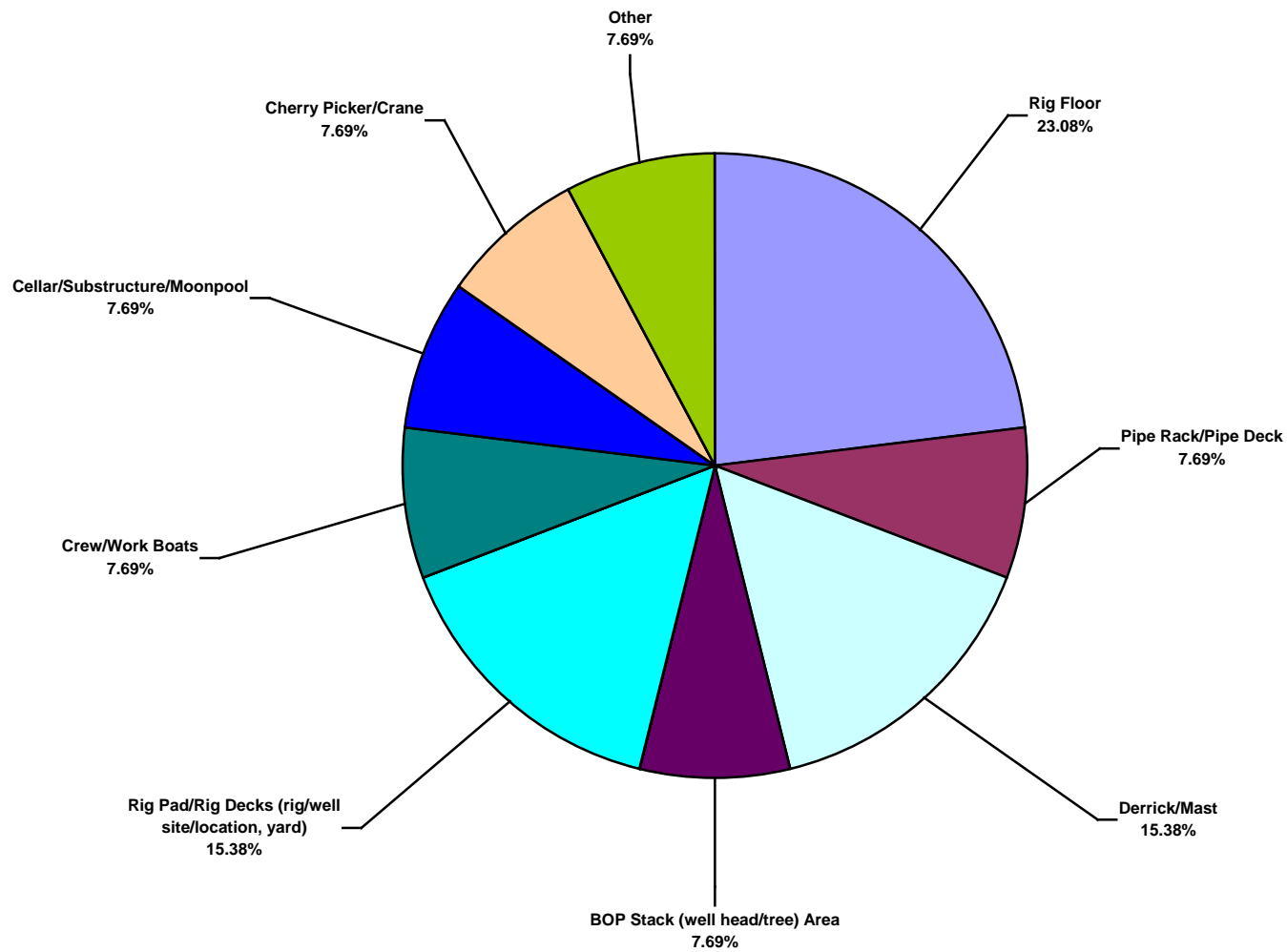
**Middle East Water Total Lost Time Incidents by Operation (Chart 11)**  
Based on 13 Incidents



**Middle East Water Total Recordable Incidents by Operation (Chart 12)**  
Based on 52 Incidents

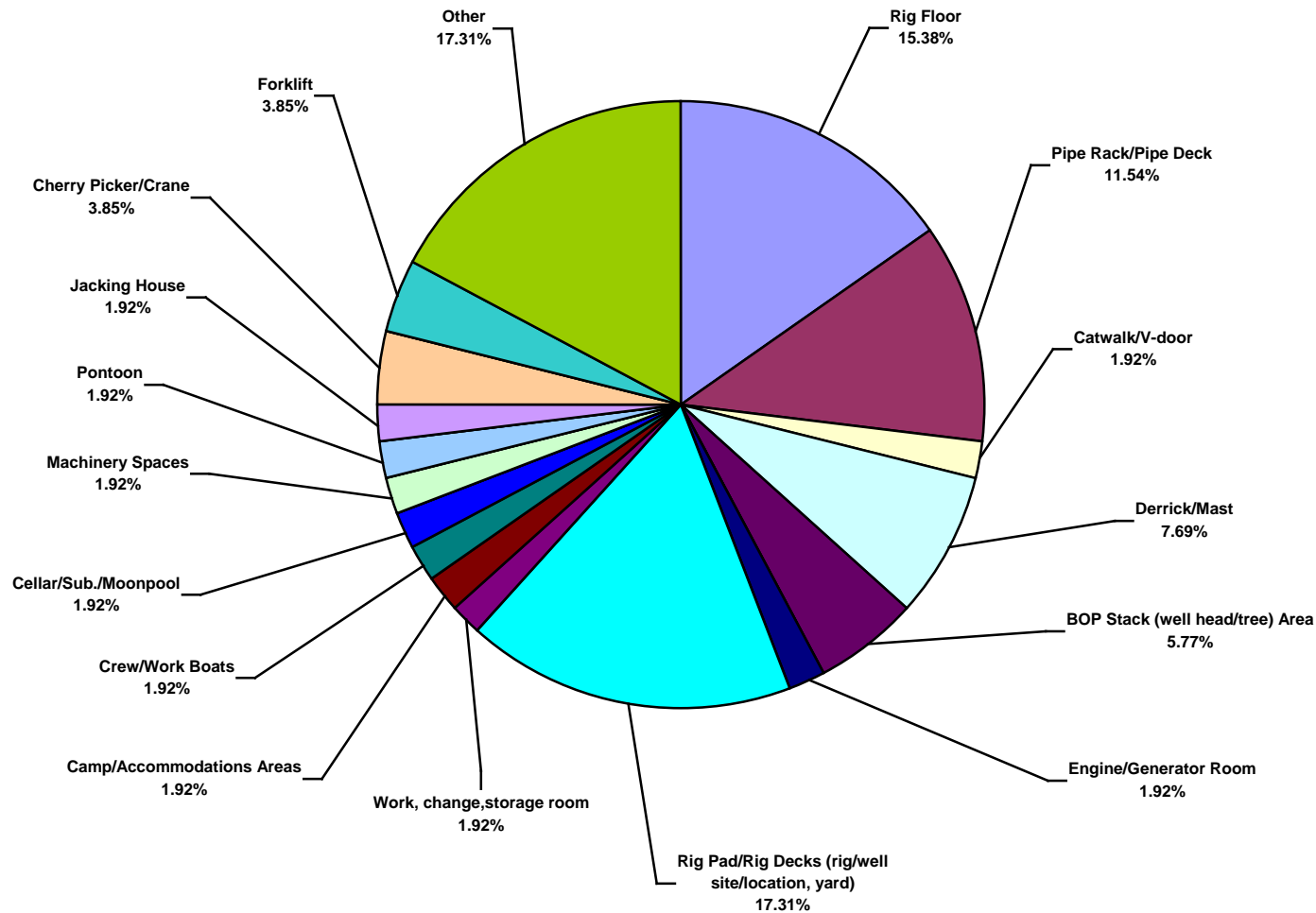


**Middle East Water Total Lost Time Incidents by Location (Chart 13)**  
Based on 13 Incidents

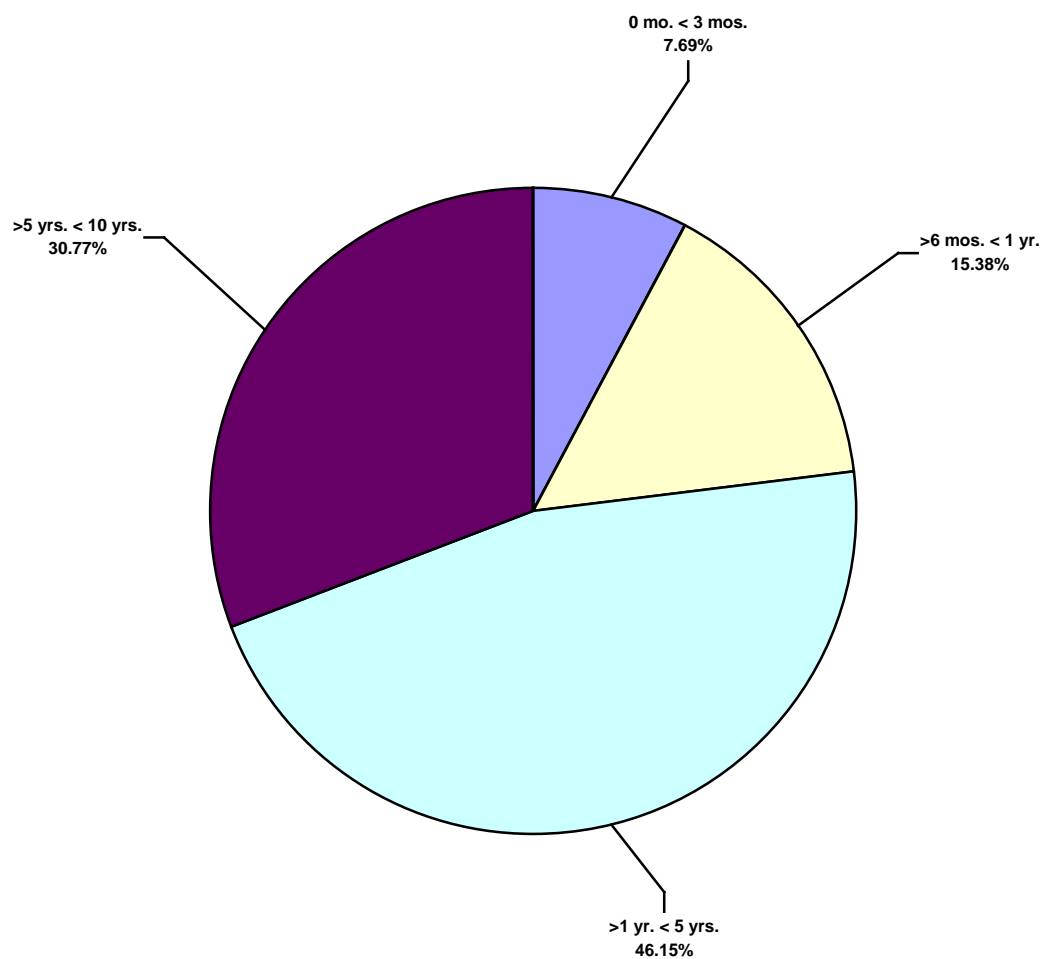




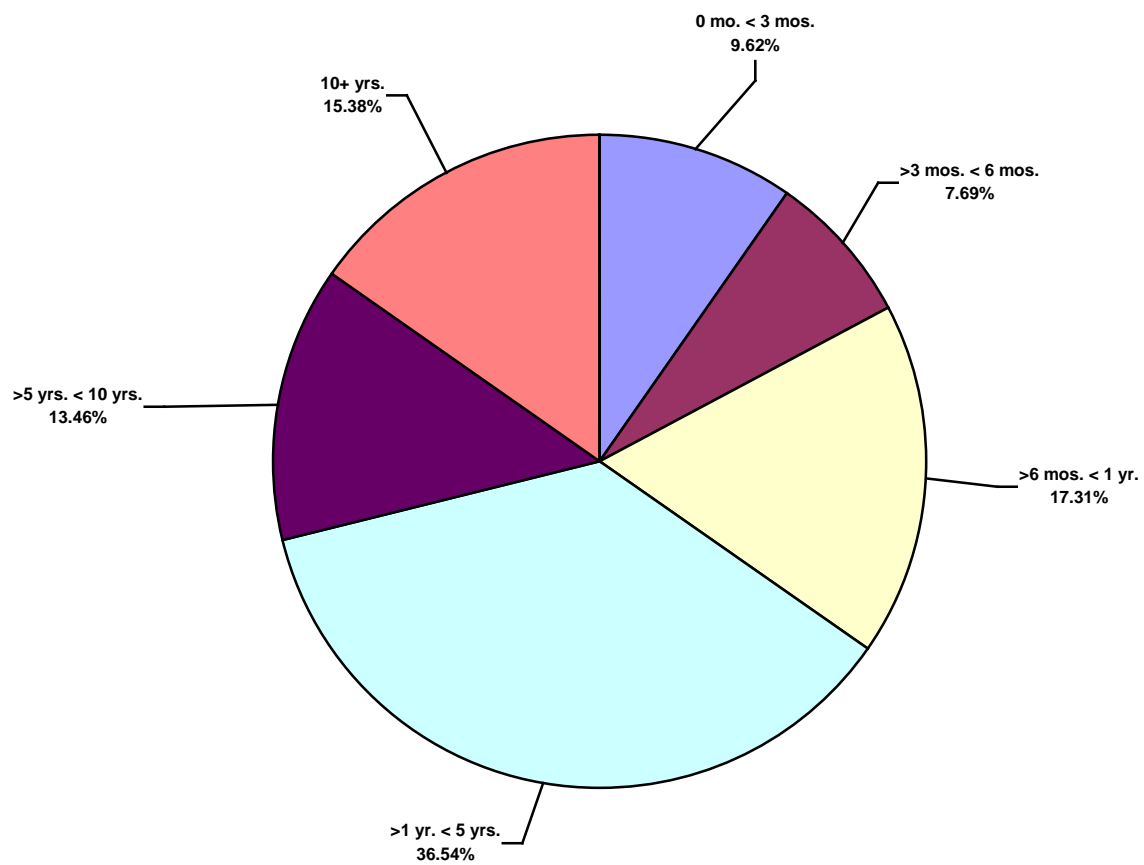
**Middle East Water Total Recordable Incidents by Location (Chart 14)**  
Based on 52 Incidents



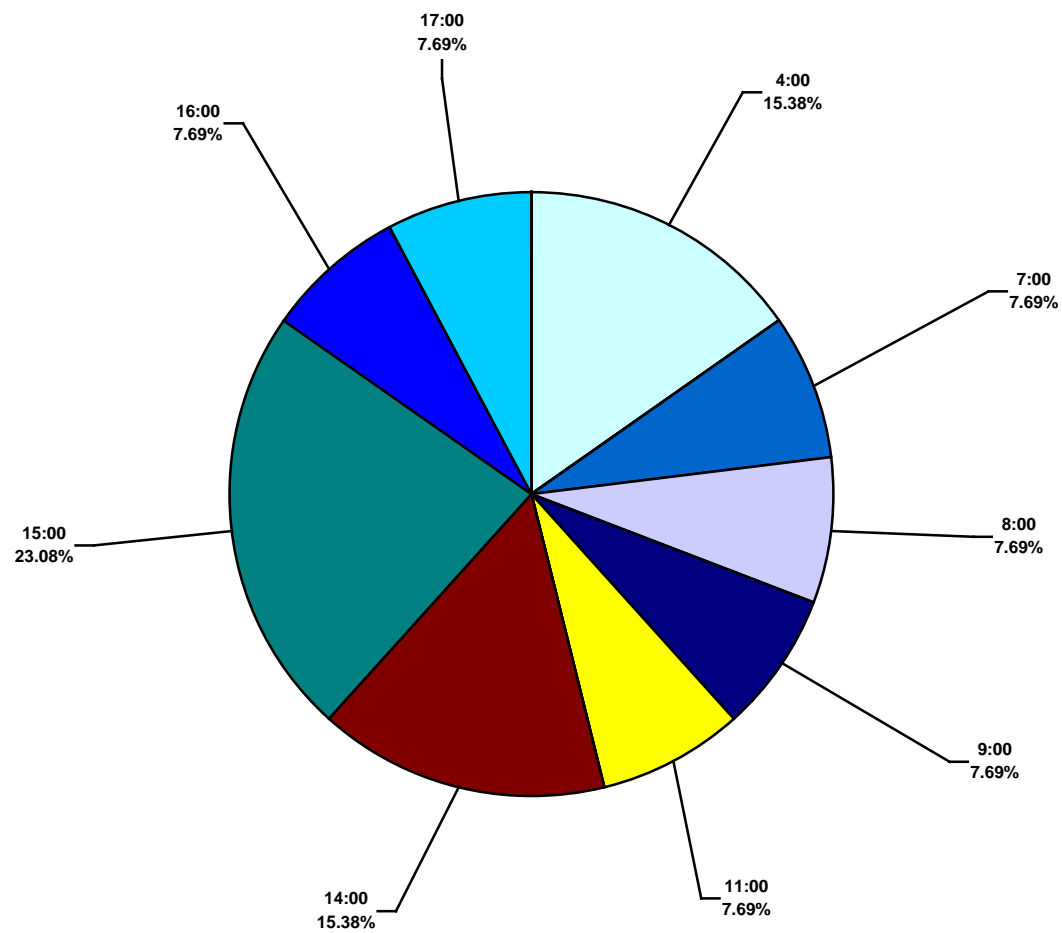
**Middle East Water Total Lost Time Incidents by Time in Service (Chart 15)**  
Based on 13 Incidents



Middle East Water Total Recordable Incidents by Time in Service (Chart 16)  
Based on 52 Incidents



**Middle East Water Total Lost Time Incidents by Time of Day (Chart 17)**  
Based on 13 Incidents



**Middle East Water Total Recordable Incidents by Time of Day (Chart 18)**  
Based on 52 Incidents

