



**IADC**

**IADC  
ISP PROGRAM**

**2013**



**Summary of Occupational  
Incidents  
(Canada Water Totals)**

*Issued 20 May 2014*

# Table of Contents

(Table of Contents is Hyperlinked, Just click on Topic & go)

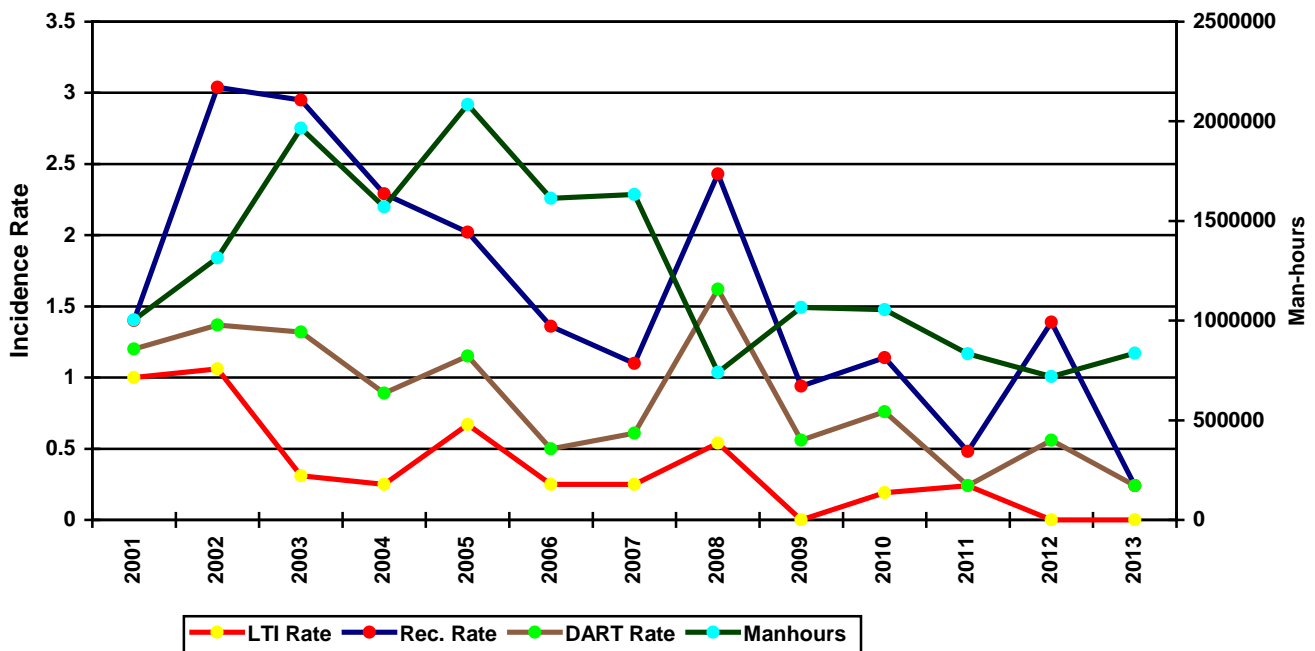
IADC 2013 CANADA WATER TOTALS (TABLE 1) .....	1
<i>Canada Water Total Incidence Rates vs Man-hours (Figure 1)</i> .....	1
IADC 2013 CANADA WATER CHARTS .....	2
<i>Canada Water Total Recordable Incidents by Month (Chart 2)</i> .....	2
<i>Canada Water Total Recordable Incidents by Occupation (Chart 4)</i> .....	3
<i>Canada Water Total Recordable Incidents by Body Part (Chart 6)</i> .....	4
<i>Canada Water Total Recordable Incidents by Incident Type (Chart 8)</i> .....	5
<i>Canada Water Total Recordable Incidents by Equipment (Chart 10)</i> .....	6
<i>Canada Water Total Recordable Incidents by Operation (Chart 12)</i> .....	7
<i>Canada Water Total Recordable Incidents by Location (Chart 14)</i> .....	8
<i>Canada Water Total Recordable Incidents by Time in Service (Chart 16)</i> .....	9
<i>Canada Water Total Recordable Incidents by Time of Day (Chart 18)</i> .....	10

## IADC 2013 Canada Water Totals (Table 1)

	<u>Totals</u>
<b>Total Manhours</b>	<b>836,147</b>
<b>Total Medical Treatment Incidents</b>	<b>0</b>
<b>Total Restricted Work Incidents</b>	<b>1</b>
<b>Total Lost Time Incidents</b>	<b>0</b>
<b>Total Fatalities</b>	<b>0</b>
<b>Total Recordables</b>	<b>1</b>
<b>MTO Incidence Rate</b>	<b>0.00</b>
<b>RWC Incidence Rate</b>	<b>0.24</b>
<b>LTI Incidence Rate</b>	<b>0.00</b>
<b>LTI Frequency Rate</b>	<b>0.00</b>
<b>DART Incidence Rate</b>	<b>0.24</b>
<b>DART Frequency Rate</b>	<b>1.20</b>
<b>Recordable Incidence Rate</b>	<b>0.24</b>
<b>Recordable Frequency Rate</b>	<b>1.20</b>

MEDICAL TREATMENT INCIDENCE RATE = MTOs X 200,000 / MANHOURS (LTIs NOT INCLUDED)  
 RESTRICTED WORK INCIDENCE RATE = RWCs X 200,000 / MANHOURS (LTIs NOT INCLUDED)  
 LOST TIME INCIDENCE RATE = (LTIs+FTLs) X 200,000 / MANHOURS  
 LOST TIME FREQUENCY RATE = (LTIs+FTLs) X 1,000,000 / MANHOURS  
 DART INCIDENCE RATE = (LTIs+FTLs+RWCs) X 200,000 / MANHOURS  
 DART FREQUENCY RATE = (LTIs+FTLs+RWCs) X 1,000,000 / MANHOURS  
 RECORDABLE INCIDENCE RATE = RECORDABLES X 200,000 / MANHOURS  
 RECORDABLE FREQUENCY RATE = RECORDABLES X 1,000,000 / MANHOURS  
**Companies Reporting: Water – 2**

**Canada Water Total Incidence Rates vs Man-hours (Figure 1)**



## IADC 2013 Canada Water Charts

Note: There was only one Lost Time Incident recorded for 2011, therefore there will not be any charts.

### Canada Water Total Recordable Incidents by Month (Chart 2)

Based on 1 Incident

June  
100.00%



**Canada Water Total Recordable Incidents by Occupation (Chart 4)**  
Based on 1 Incident

Roustabout (Lease Hand)  
100.00%





**Canada Water Total Recordable Incidents by Body Part (Chart 6)**  
Based on 1 Incident

Hand(s) / Wrist(s)  
100.00%



**Canada Water Total Recordable Incidents by Incident Type (Chart 8)**  
Based on 1 Incident

Slip/Fall: Same Level  
100.00%





**Canada Water Total Recordable Incidents by Equipment (Chart 10)**  
Based on 1 Incident

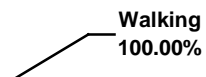
**Boat Cargo (skids, tubulars,  
containers, etc.)**  
100.00%







**Canada Water Total Recordable Incidents by Operation (Chart 12)**  
Based on 1 Incident





**Canada Water Total Recordable Incidents by Location (Chart 14)**  
Based on 1 Incident

Pipe Rack/Pipe Deck  
100.00%





**Canada Water Total Recordable Incidents by Time in Service (Chart 16)**  
Based on 1 Incident

>3 mos. < 6 mos.  
100.00%



**Canada Water Total Recordable Incidents by Time of Day (Chart 18)**  
Based on 1 Incident

15:00  
100.00%

