



**IADC**

**IADC  
ISP PROGRAM**

**2013**



**Summary of Occupational  
Incidents  
(Africa Water Totals)**

*Issued 20 May 2014*

# Table of Contents

(Table of Contents is Hyperlinked, Just click on Topic & go)

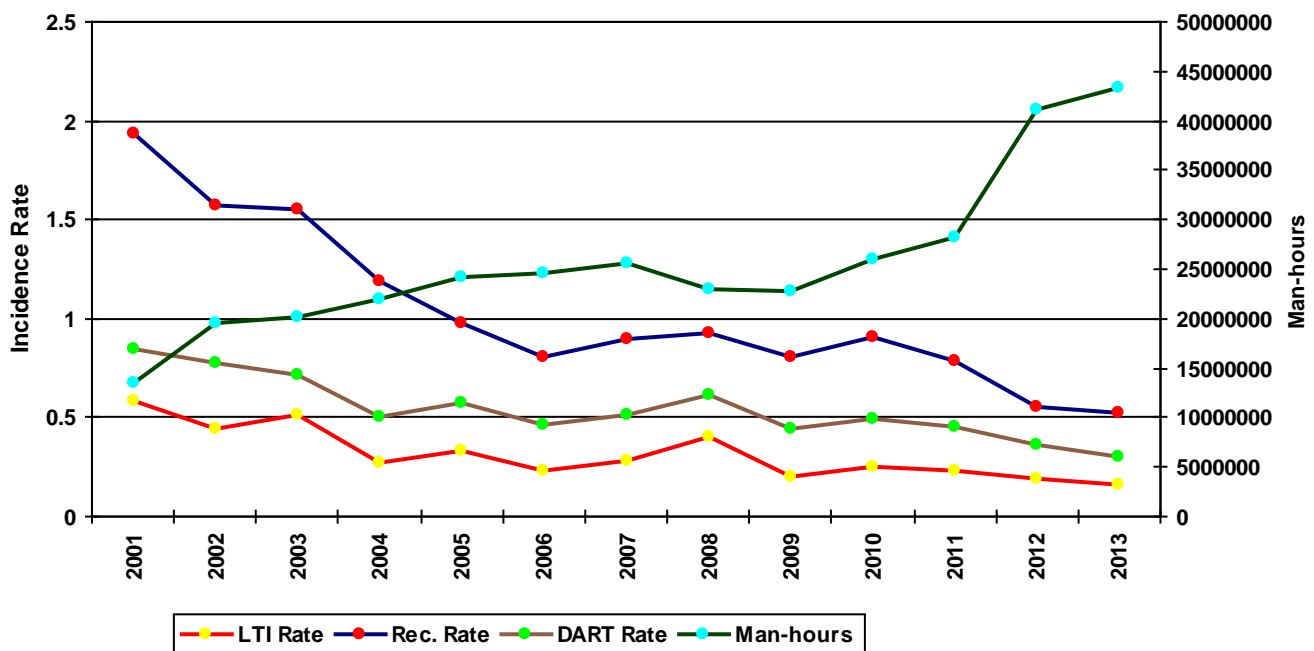
IADC 2013 AFRICA WATER TOTALS (TABLE 1).....	1
<i>Africa Water Total Incidence Rates vs Man-hours (Figure 1).....</i>	<i>1</i>
IADC 2013 AFRICA WATER CHARTS .....	2
<i>Africa Water Total Lost Time Incidents by Month (Chart 1).....</i>	<i>2</i>
<i>Africa Water Total Recordable Incidents by Month (Chart 2).....</i>	<i>3</i>
<i>Africa Water Total Lost Time Incidents by Occupation (Chart 3).....</i>	<i>4</i>
<i>Africa Water Total Recordable Incidents by Occupation (Chart 4).....</i>	<i>5</i>
<i>Africa Water Total Lost Time Incidents by Body Part (Chart 5).....</i>	<i>6</i>
<i>Africa Water Total Recordable Incidents by Body Part (Chart 6).....</i>	<i>7</i>
<i>Africa Water Total Lost Time Incidents by Incident Type (Chart 7).....</i>	<i>8</i>
<i>Africa Water Total Recordable Incidents by Incident Type (Chart 8).....</i>	<i>9</i>
<i>Africa Water Total Lost Time Incidents by Equipment (Chart 9).....</i>	<i>10</i>
<i>Africa Water Total Recordable Incidents by Equipment (Chart 10).....</i>	<i>11</i>
<i>Africa Water Total Lost Time Incidents by Operation (Chart 11).....</i>	<i>12</i>
<i>Africa Water Total Recordable Incidents by Operation (Chart 12).....</i>	<i>13</i>
<i>Africa Water Total Lost Time Incidents by Location (Chart 13).....</i>	<i>14</i>
<i>Africa Water Total Recordable Incidents by Location (Chart 14).....</i>	<i>15</i>
<i>Africa Water Total Lost Time Incidents by Time in Service (Chart 15).....</i>	<i>16</i>
<i>Africa Water Total Recordable Incidents by Time in Service (Chart 16).....</i>	<i>17</i>
<i>Africa Water Total Lost Time Incidents by Time of Day (Chart 17).....</i>	<i>18</i>
<i>Africa Water Total Recordable Incidents by Time of Day (Chart 18).....</i>	<i>19</i>

## IADC 2013 Africa Water Totals (Table 1)

	<u>Totals</u>
<b>Total Manhours</b>	<b>43,377,983</b>
<b>Total Medical Treatment Incidents</b>	<b>49</b>
<b>Total Restricted Work Incidents</b>	<b>29</b>
<b>Total Lost Time Incidents</b>	<b>32</b>
<b>Total Fatalities</b>	<b>3</b>
<b>Total Recordables</b>	<b>113</b>
<b>MTO Incidence Rate</b>	<b>0.23</b>
<b>RWC Incidence Rate</b>	<b>0.13</b>
<b>LTI Incidence Rate</b>	<b>0.16</b>
<b>LTI Frequency Rate</b>	<b>0.81</b>
<b>DART Incidence Rate</b>	<b>0.30</b>
<b>DART Frequency Rate</b>	<b>1.48</b>
<b>Recordable Incidence Rate</b>	<b>0.52</b>
<b>Recordable Frequency Rate</b>	<b>2.61</b>

MEDICAL TREATMENT INCIDENCE RATE = MTOs X 200,000 / MANHOURS (LTIs NOT INCLUDED)  
 RESTRICTED WORK INCIDENCE RATE = RWCs X 200,000 / MANHOURS (LTIs NOT INCLUDED)  
 LOST TIME INCIDENCE RATE = (LTIs+FTLs) X 200,000 / MANHOURS  
 LOST TIME FREQUENCY RATE = (LTIs+FTLs) X 1,000,000 / MANHOURS  
 DART INCIDENCE RATE = (LTIs+FTLs+RWCs) X 200,000 / MANHOURS  
 DART INCIDENCE RATE = (LTIs+FTLs+RWCs) X 1,000,000 / MANHOURS  
 RECORDABLE INCIDENCE RATE = RECORDABLES X 200,000 / MANHOURS  
 RECORDABLE FREQUENCY RATE = RECORDABLES X 1,000,000 / MANHOURS  
**Companies Reporting: Water – 23**

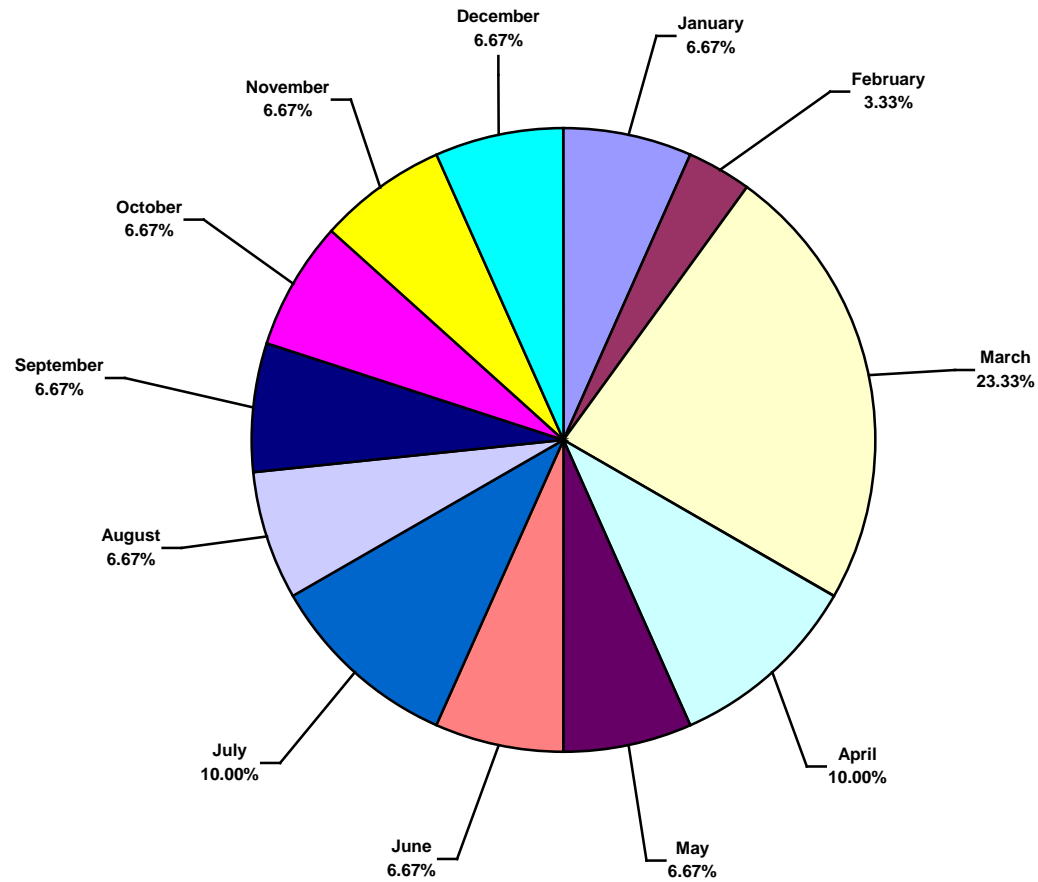
**Africa Water Total Incidence Rates vs Man-hours (Figure 1)**



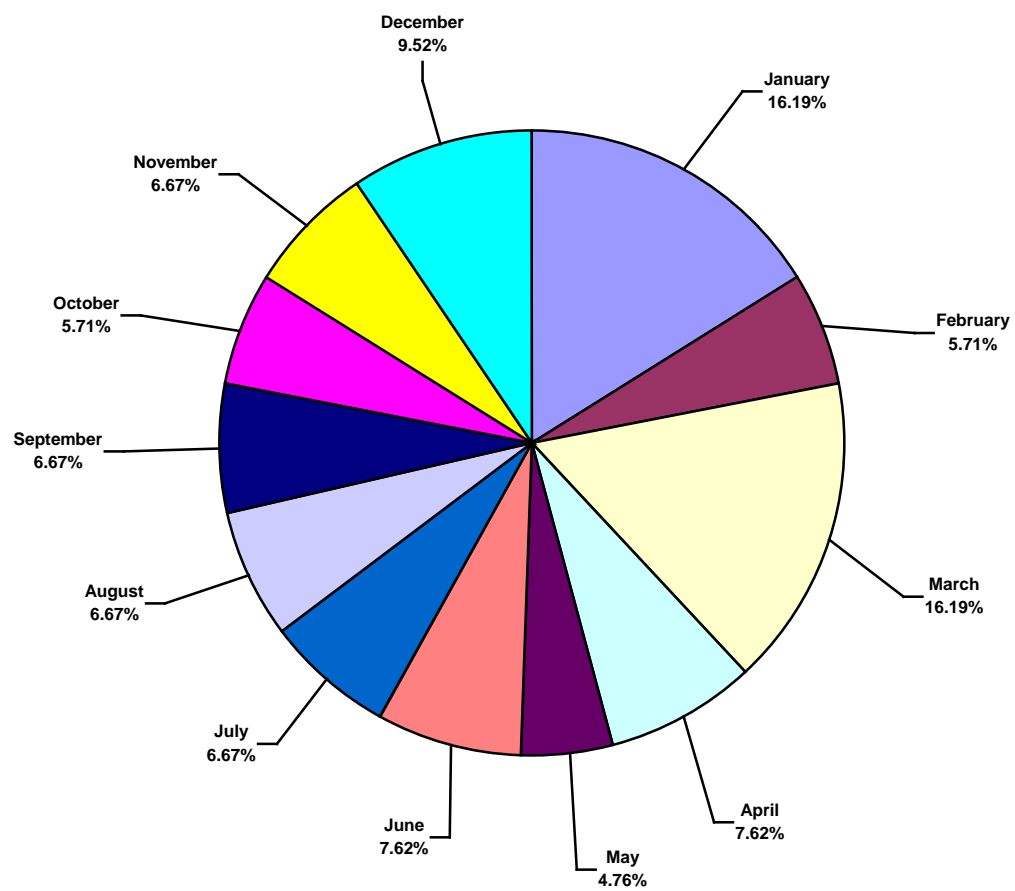
## IADC 2013 Africa Water Charts

### Africa Water Total Lost Time Incidents by Month (Chart 1)

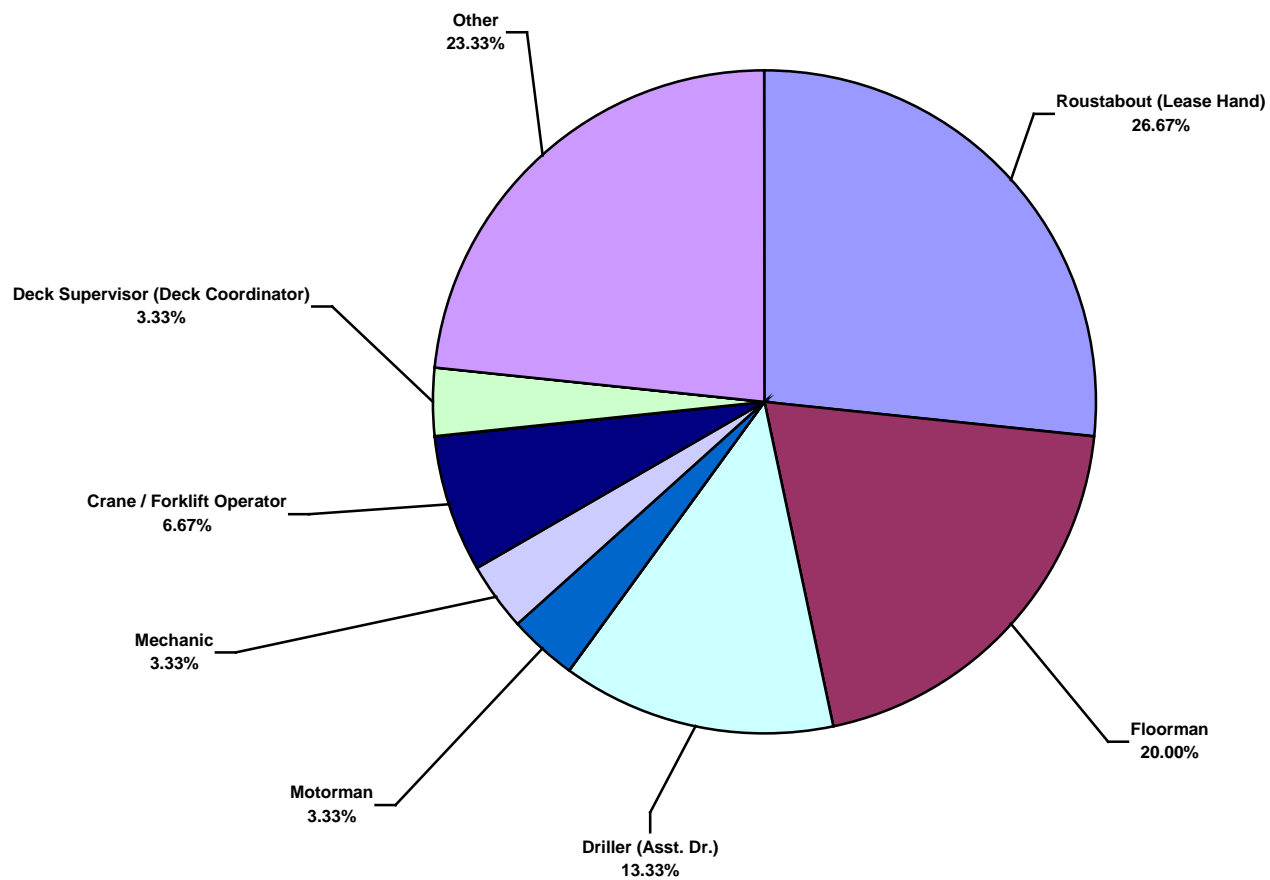
Based on 30 Incidents



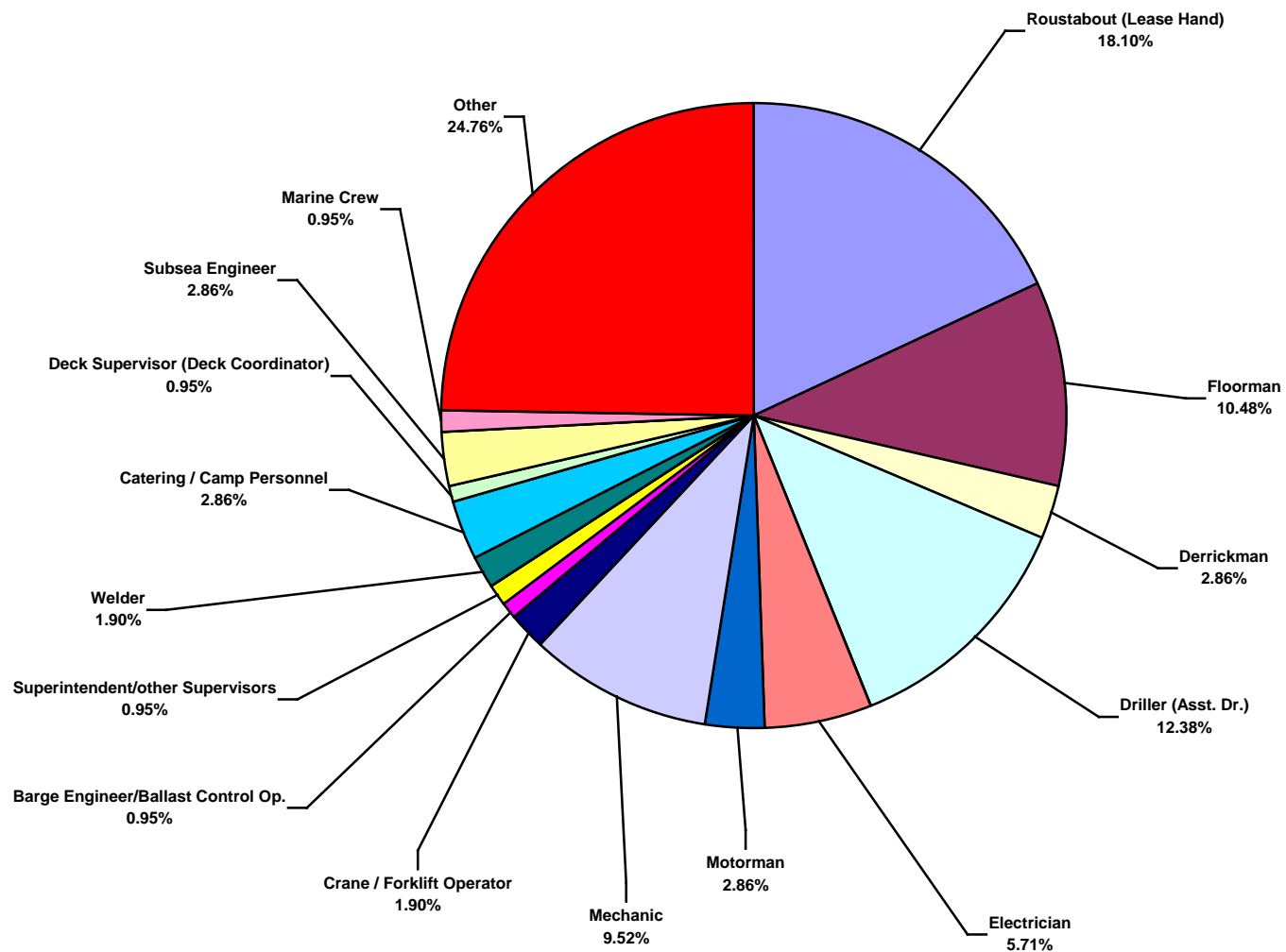
**Africa Water Total Recordable Incidents by Month (Chart 2)**  
Based on 105 Incidents



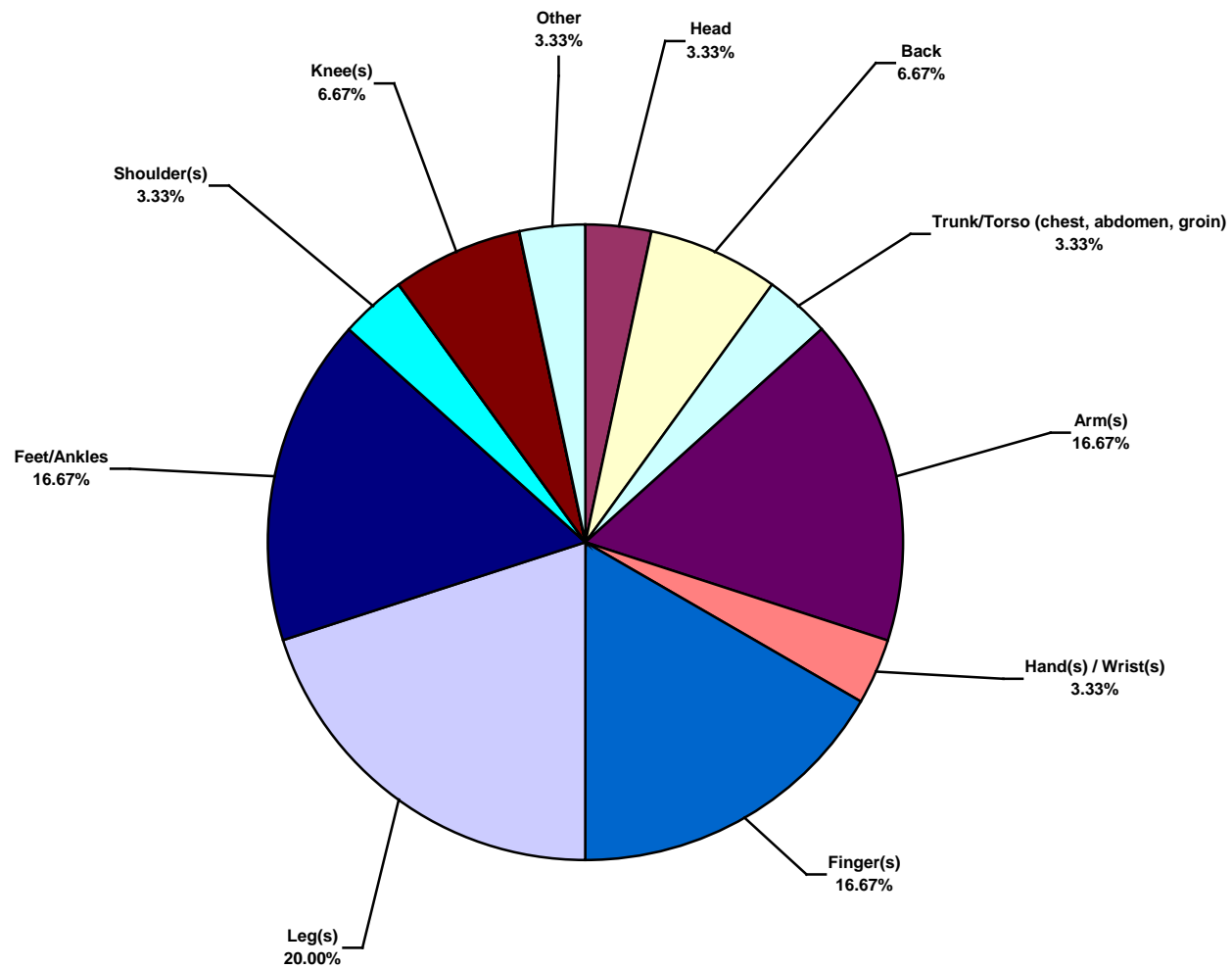
**Africa Water Total Lost Time Incidents by Occupation (Chart 3)**  
Based on 30 Incidents



**Africa Water Total Recordable Incidents by Occupation (Chart 4)**  
Based on 105 Incidents

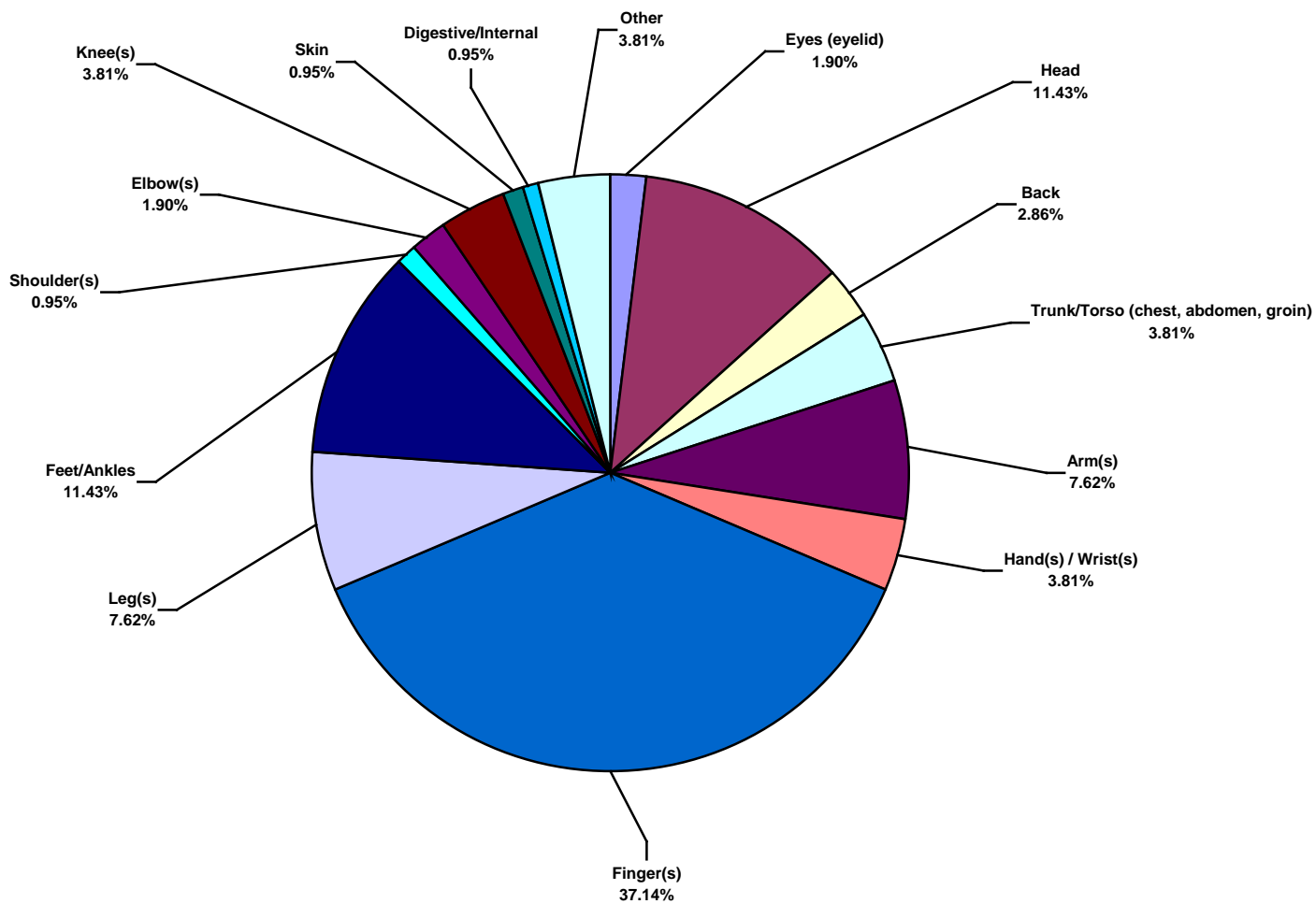


**Africa Water Total Lost Time Incidents by Body Part (Chart 5)**  
Based on 30 Incidents

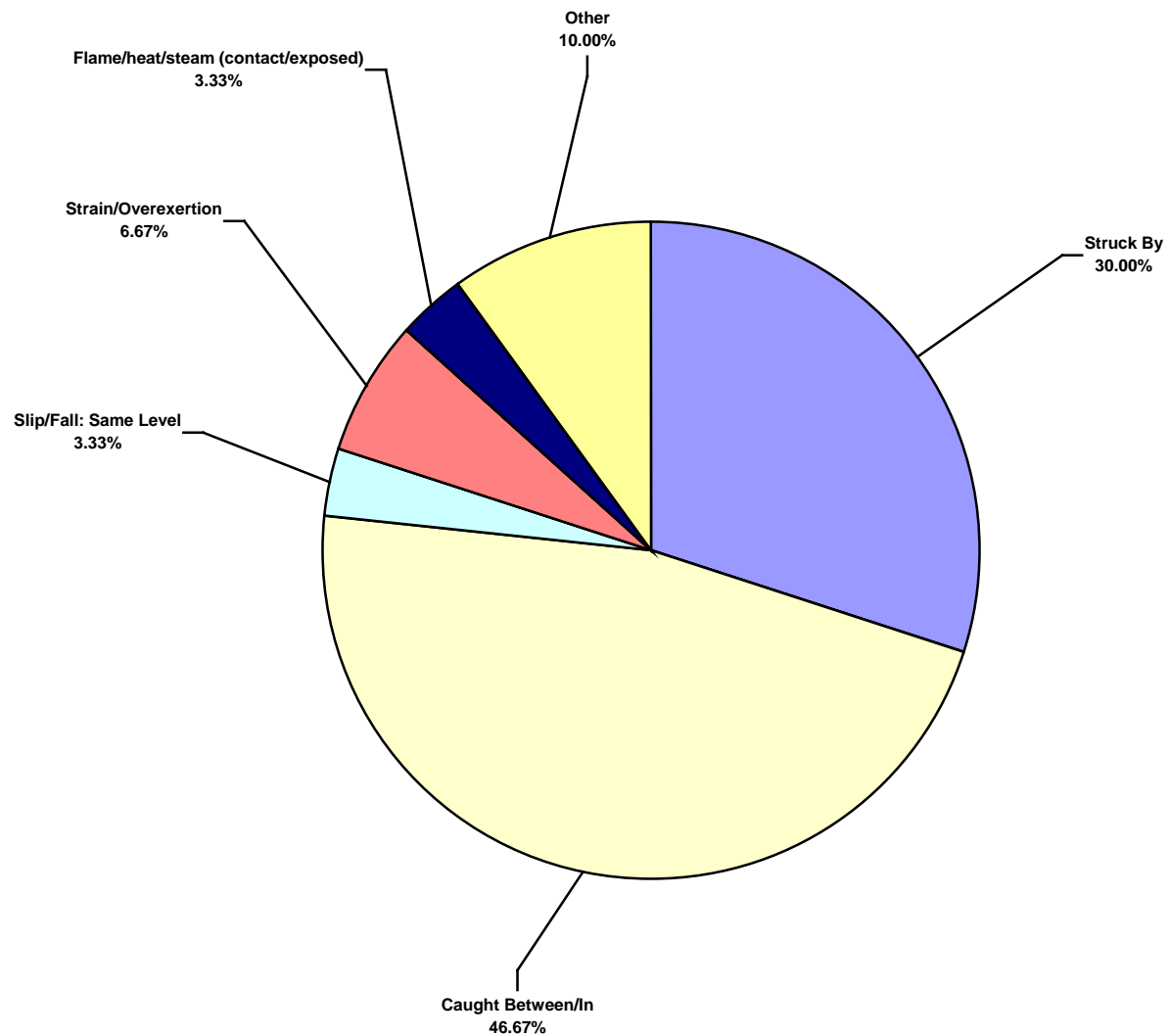




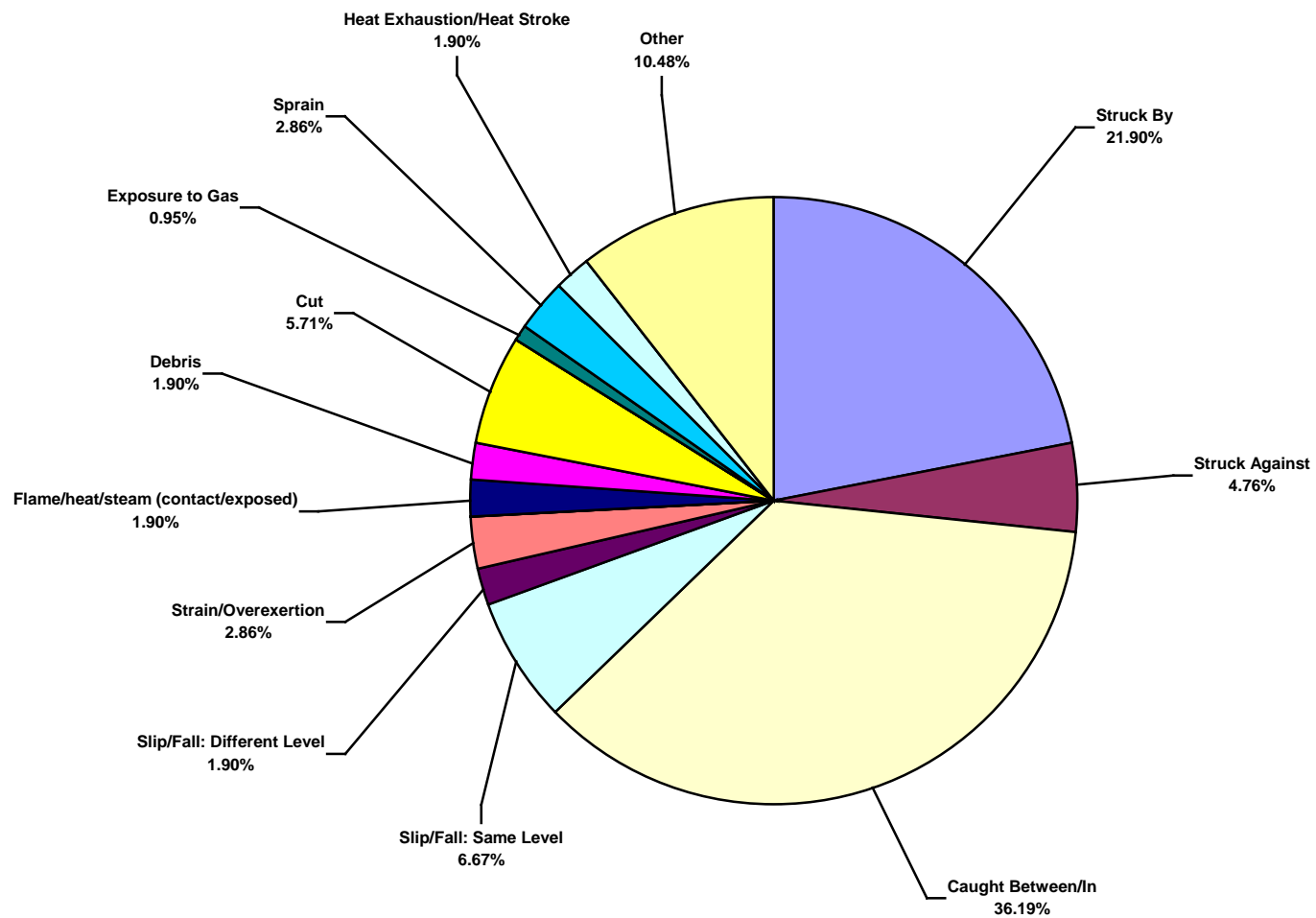
**Africa Water Total Recordable Incidents by Body Part (Chart 6)**  
Based on 105 Incidents



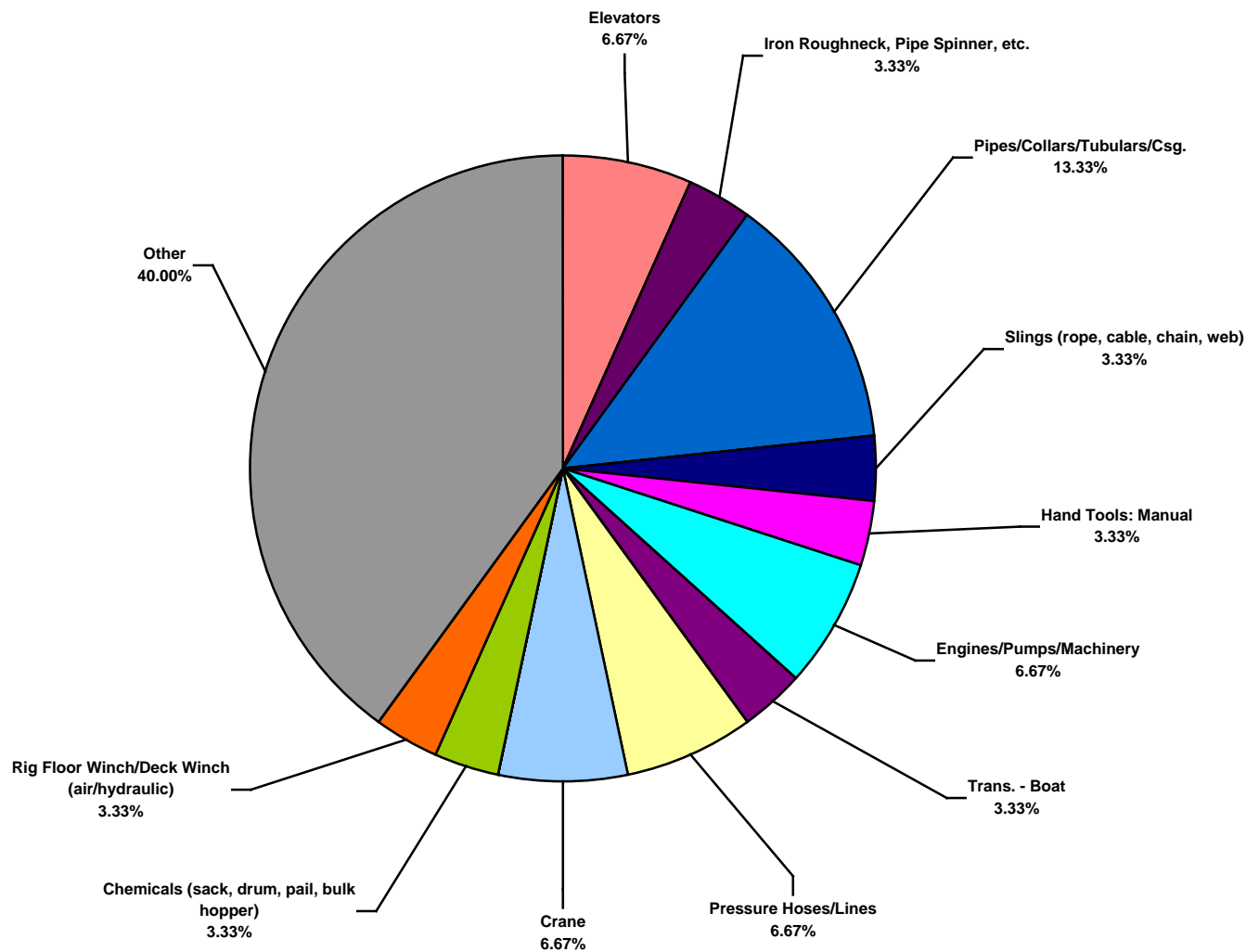
**Africa Water Total Lost Time Incidents by Incident Type (Chart 7)**  
Based on 30 Incidents



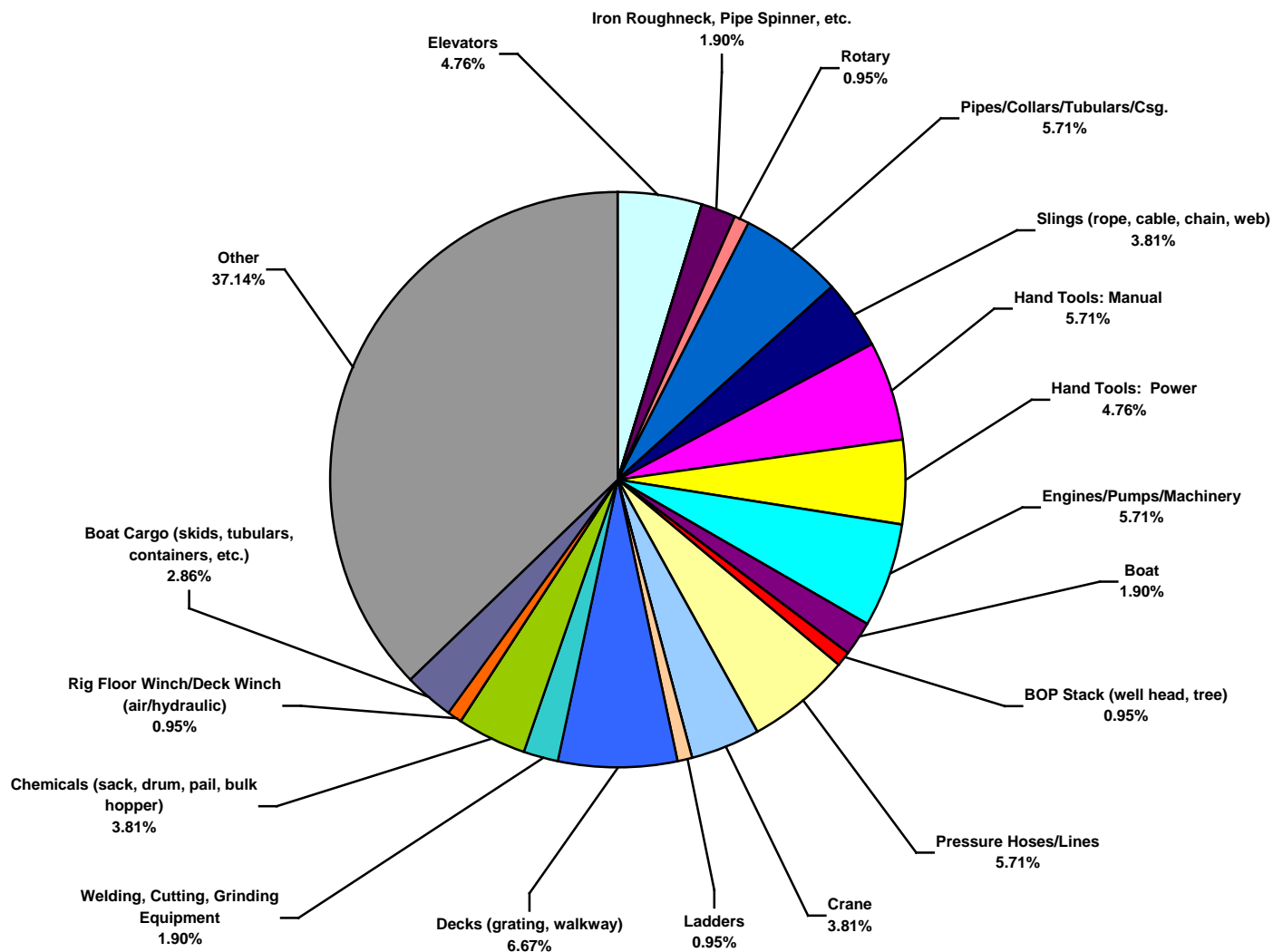
**Africa Water Total Recordable Incidents by Incident Type (Chart 8)**  
Based on 105 Incidents



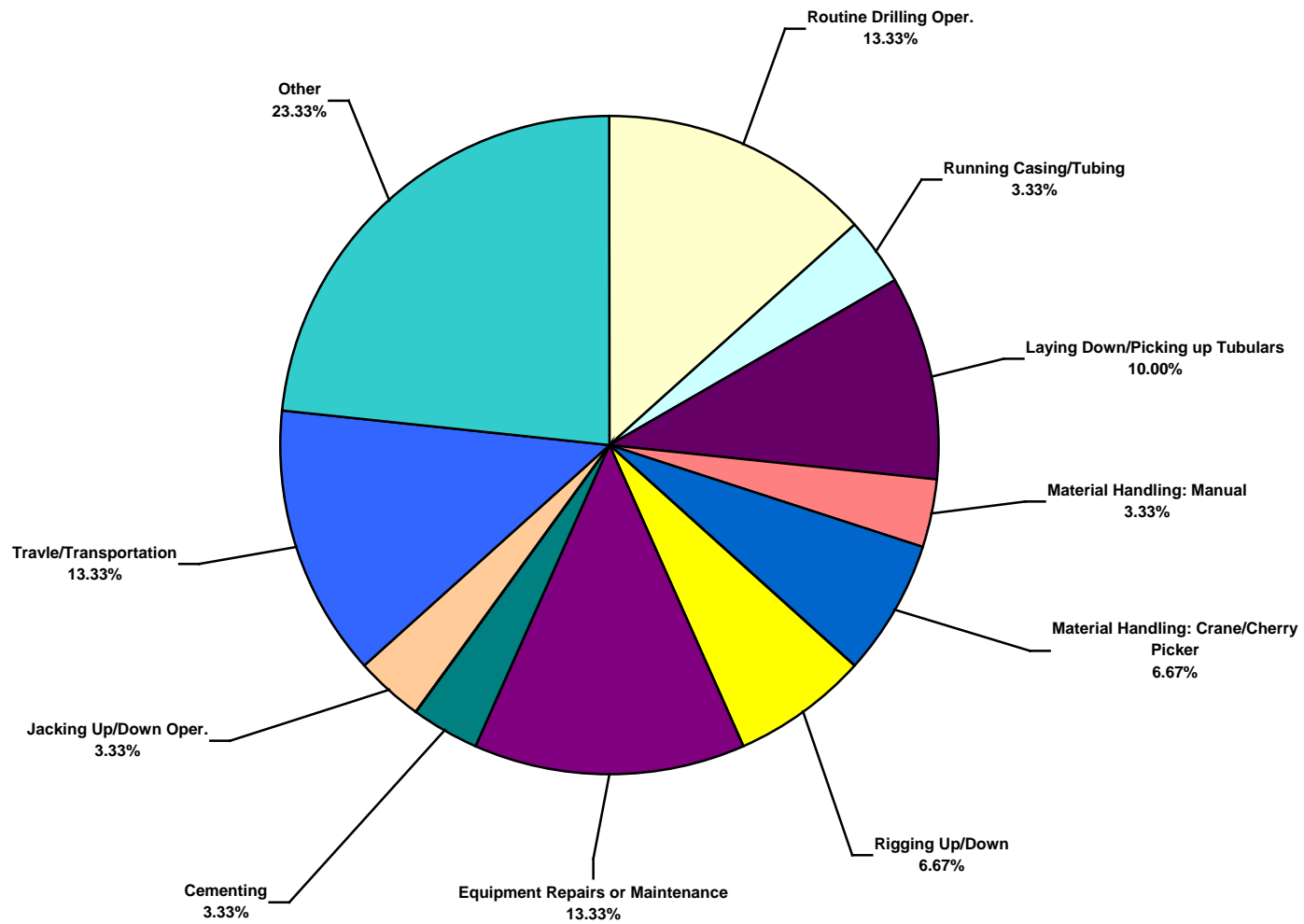
**Africa Water Total Lost Time Incidents by Equipment (Chart 9)**  
Based on 30 Incidents



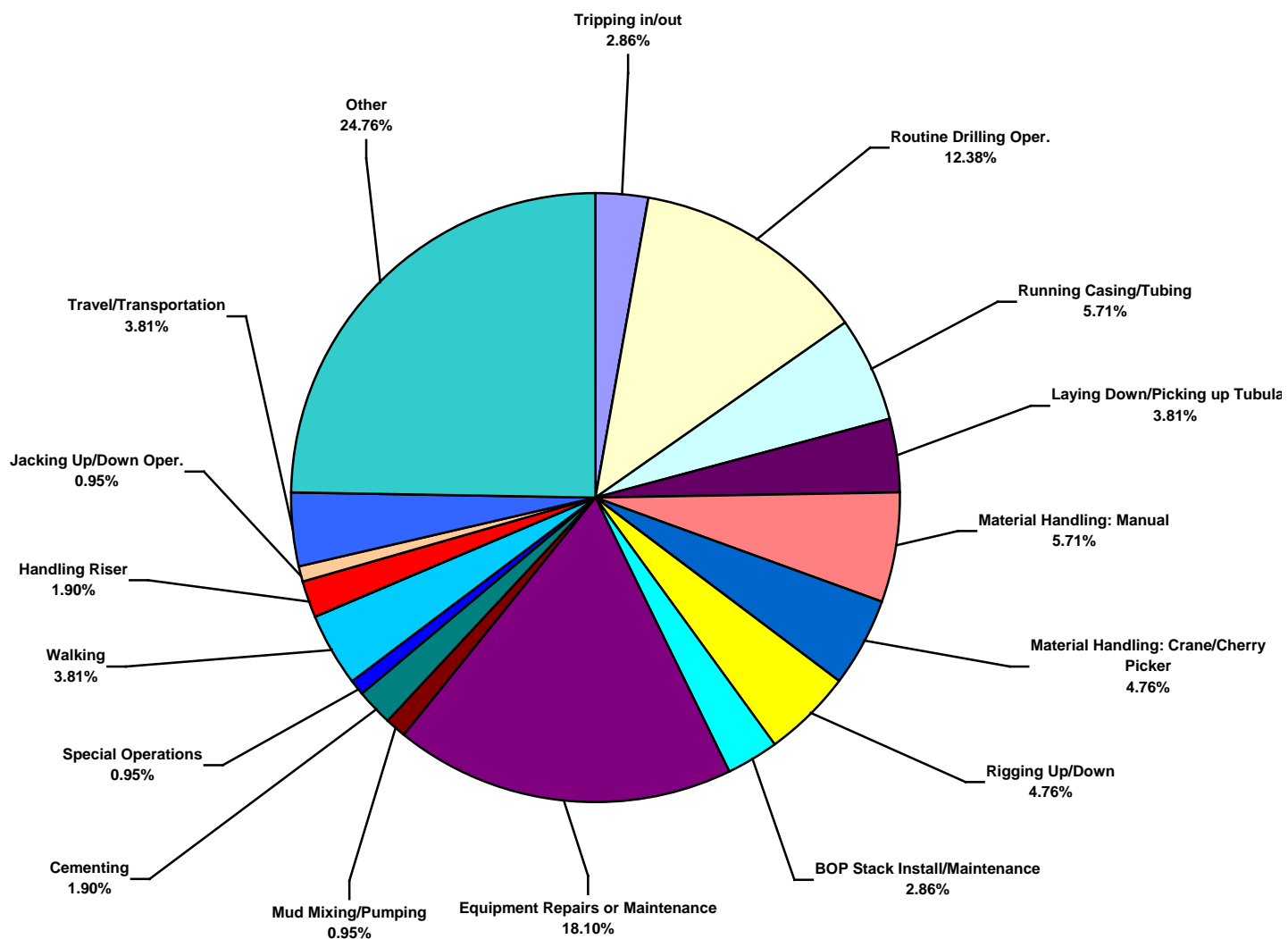
**Africa Water Total Recordable Incidents by Equipment (Chart 10)**  
Based on 105 Incidents



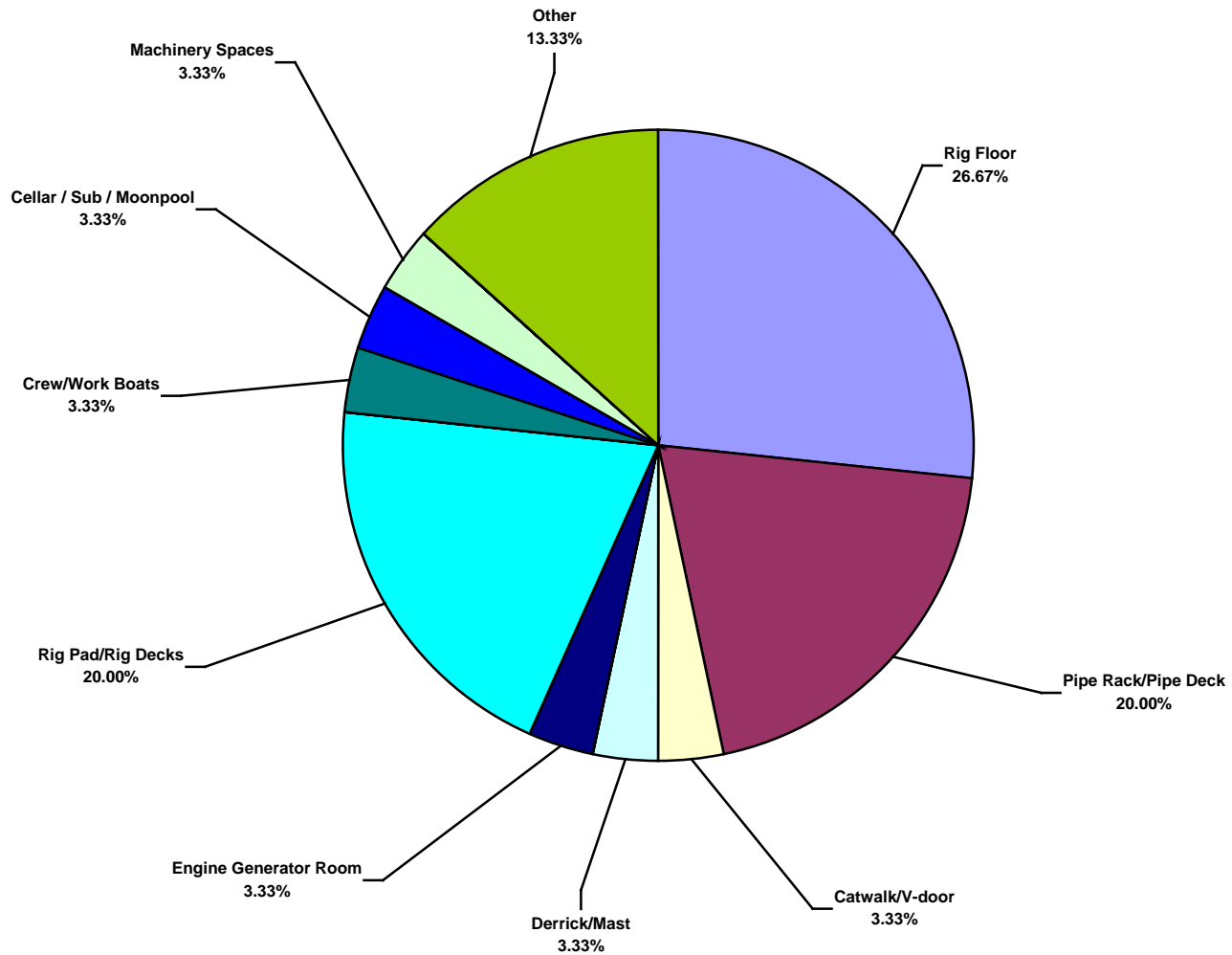
**Africa Water Total Lost Time Incidents by Operation (Chart 11)**  
Based on 30 Incidents



**Africa Water Total Recordable Incidents by Operation (Chart 12)**  
Based on 105 Incidents

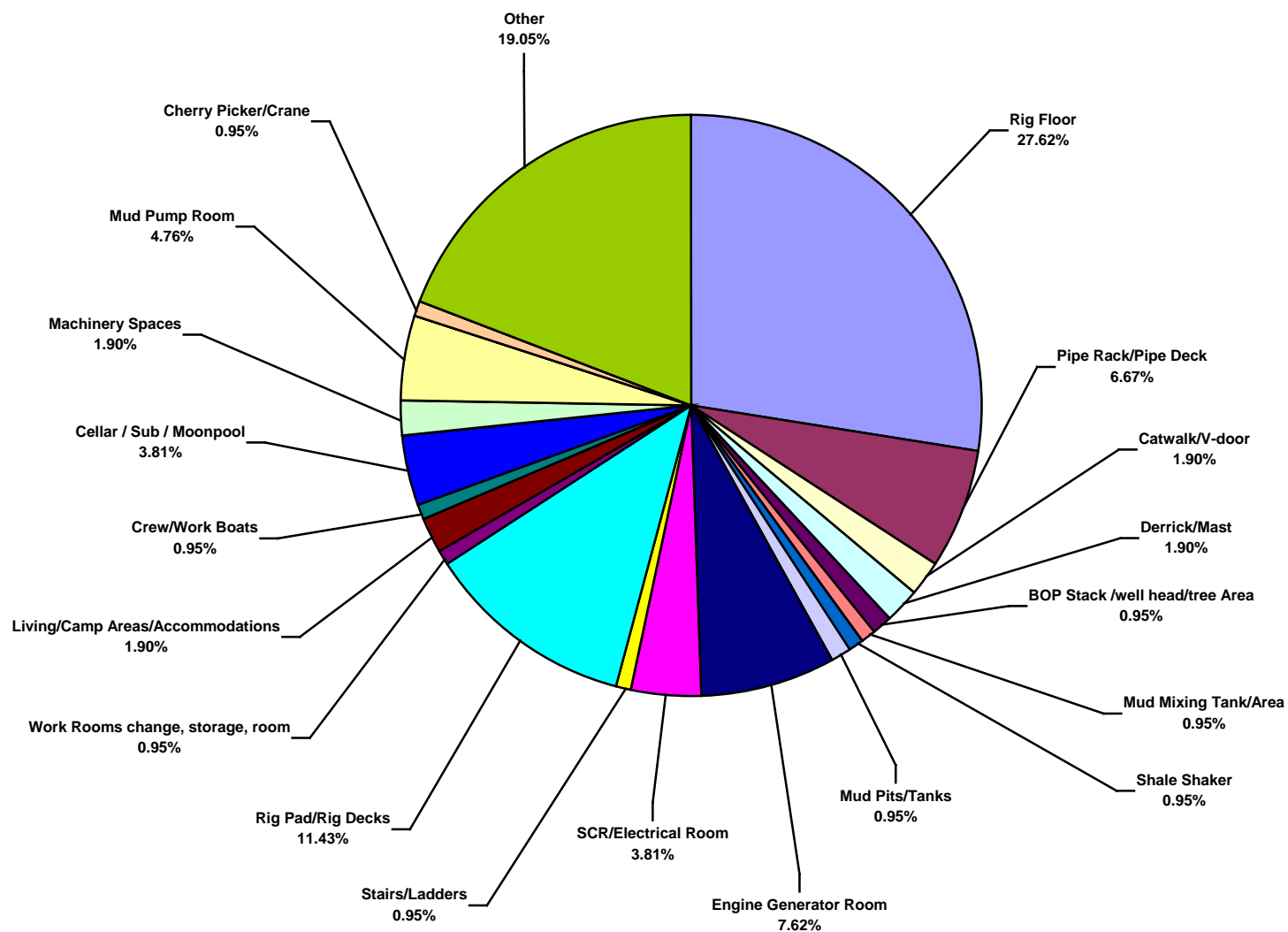


**Africa Water Total Lost Time Incidents by Location (Chart 13)**  
Based on 30 Incidents

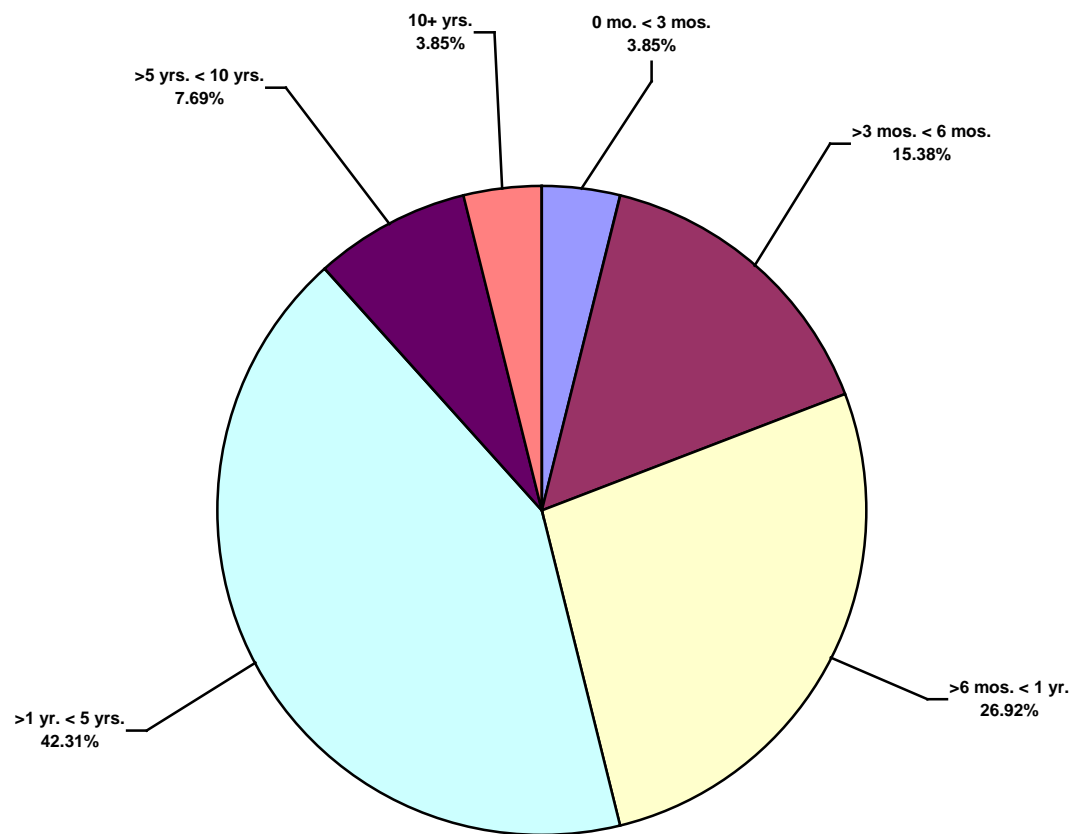




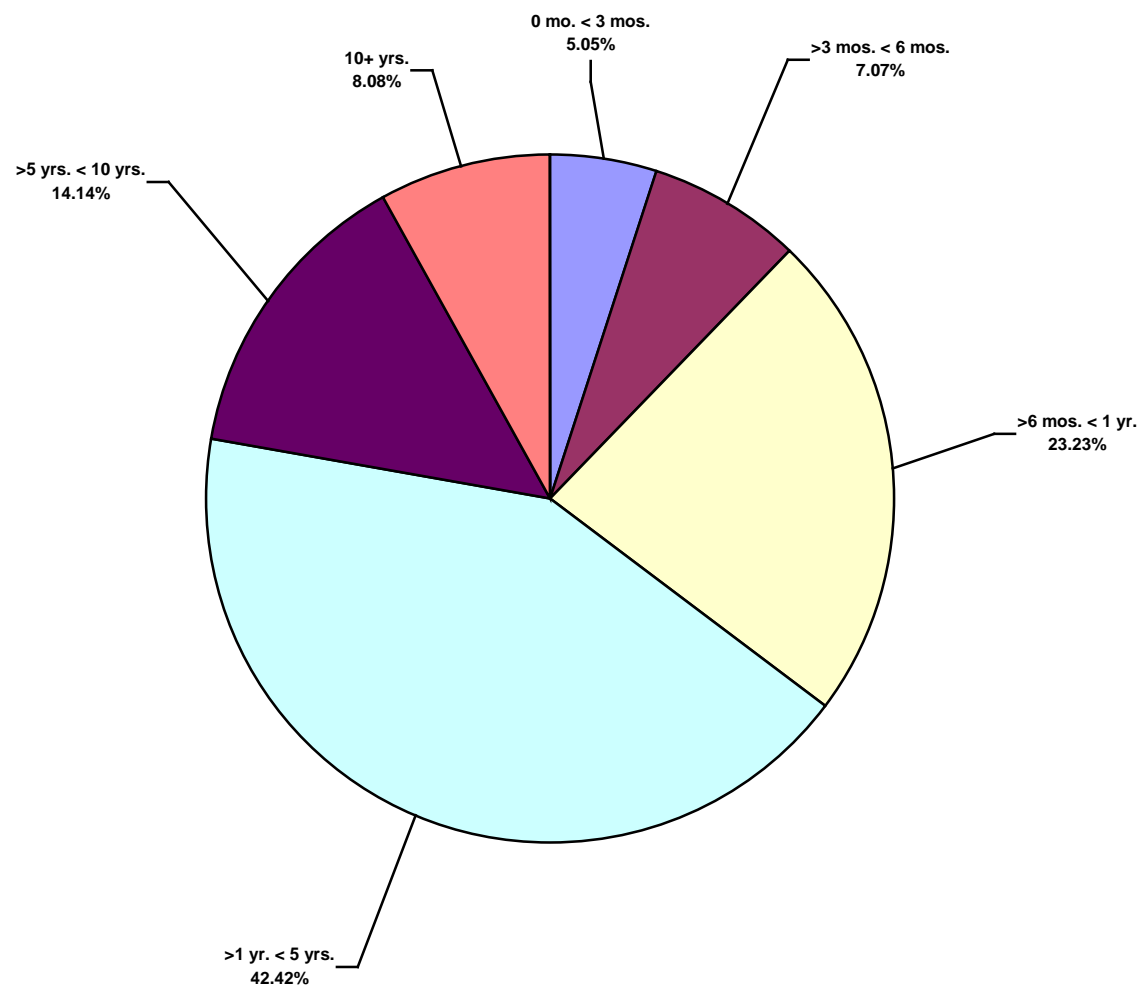
**Africa Water Total Recordable Incidents by Location (Chart 14)**  
Based on 105 Incidents



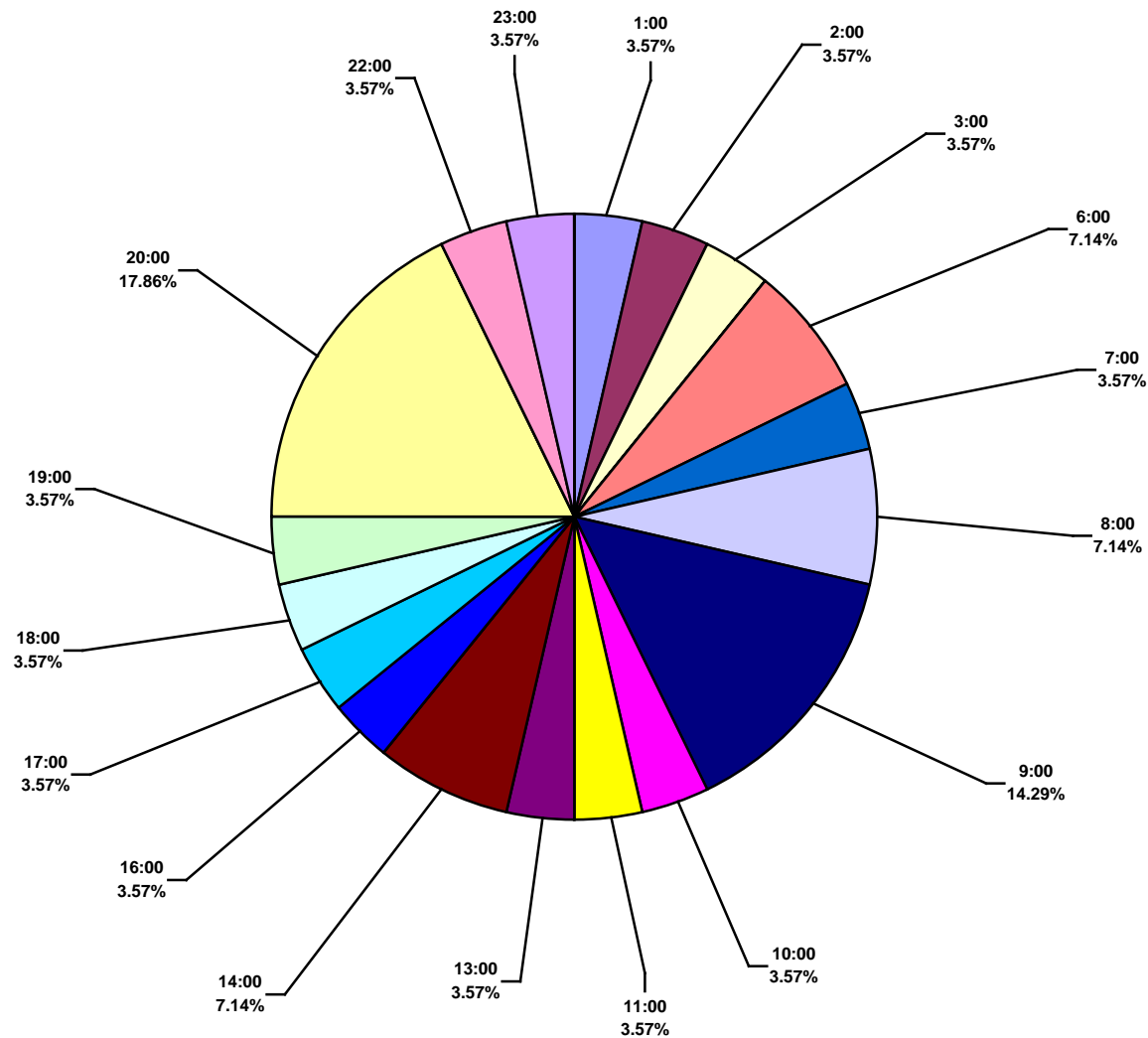
**Africa Water Total Lost Time Incidents by Time in Service (Chart 15)**  
Based on 26 Incidents



**Africa Water Total Recordable Incidents by Time in Service (Chart 16)**  
Based on 99 Incidents



**Africa Water Total Lost Time Incidents by Time of Day (Chart 17)**  
Based on 28 Incidents



**Africa Water Total Recordable Incidents by Time of Day (Chart 18)**  
Based on 103 Incidents

